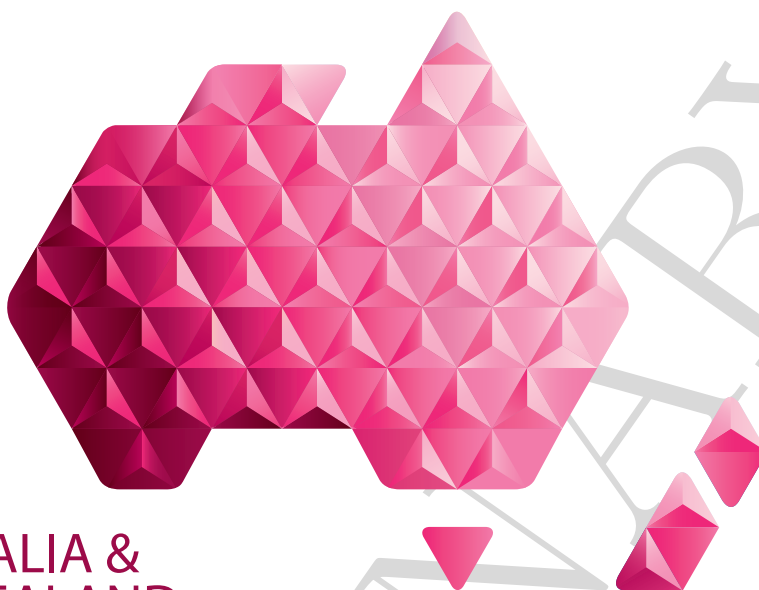


**ANZ  
DATA**



**AUSTRALIA &  
NEW ZEALAND**

LIVING KIDNEY DONATION  
REGISTRY

# Monthly Report on Living Kidney Donation in Australia and New Zealand

## March 2024

Produced 16 April 2024 10:52 AM  
Data Received by ANZDATA up to 15 April 2024

## Contents

<b>Explanatory Notes</b>	<b>2</b>
Definitions . . . . .	2
Notes . . . . .	2
<b>Summary of Australian and New Zealand Living Kidney Donation</b>	<b>3</b>
Total Australian and New Zealand Living Kidney Donors by Donor Country . . . . .	5
Australian and New Zealand Genetically-Related Donors by Donor Country . . . . .	5
Australian and New Zealand Emotionally-Related Donors by Donor Country . . . . .	5
Australian and New Zealand Unrelated Donors by Donor Country . . . . .	5
Donors in the Australian and New Zealand Paired Kidney Exchange Program (ANZKX) by Donor Country . . . . .	6
<b>Transplant Recipients from Australian and New Zealand Living Kidney Donors</b>	<b>6</b>
Recipients from Australian and New Zealand Donors by Country of Donation . . . . .	6
Recipients from Australian and New Zealand Donors by Country of Transplantation . . . . .	6

PRELIMINARY

## Explanatory Notes

### Definitions

Donor – A human being, living or deceased, who is a source of cells, tissues or organs for the purpose of transplantation.

Living Kidney Donor – A living human being from whom a kidney has been removed for the purpose of transplantation.

A Living Kidney Donor has one of the following three possible relationships with the recipient:

1. Related:

(a) Genetically Related:

- i. 1st Degree Genetic Relative: Parent, Sibling, Offspring
- ii. 2nd Degree genetic relative, e.g. grandparent, grandchild, aunt, uncle, niece, nephew
- iii. Other than 1st or 2nd degree genetically related, for example cousin

(b) Emotionally Related: Spouse (if not genetically related); in-laws; Adopted; Friend

2. Unrelated = Non Related: Not Genetically or Emotionally Related

Australian and New Zealand Paired Kidney Exchange Program (ANZKX) – This program matches incompatible kidney donors with recipient pairs with other incompatible pairs across Australia and New Zealand.

Paired Kidney Exchange Donor – A living kidney donor whom is identified as a match for patients who are eligible for a kidney transplant, and have a living donor who is willing but unable to donate because of an incompatible blood type or tissue type. This donor is willing to donate their kidney to another person.

Recipient – A consented eligible person into whom organs, retrieved for the purpose of transplantation, are received.

Transplantation – The transfer of organs or tissue from donor to recipient with the aim of restoring body function(s) of the recipient.

### Notes

For the purpose of this report data representing Living Kidney Donors are defined in the definition outlined above.

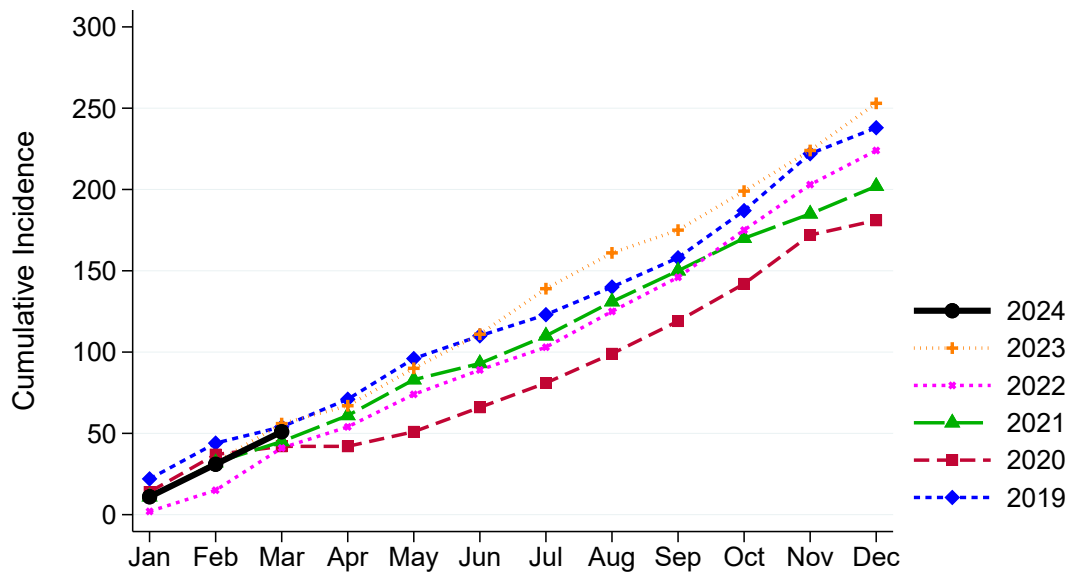
All tables are presented by state/territory of donation, unless otherwise specified.

This report supercedes previous monthly report and as data reported is subject to revision it may change in subsequent reporting.

## Summary of Australian and New Zealand Living Kidney Donation

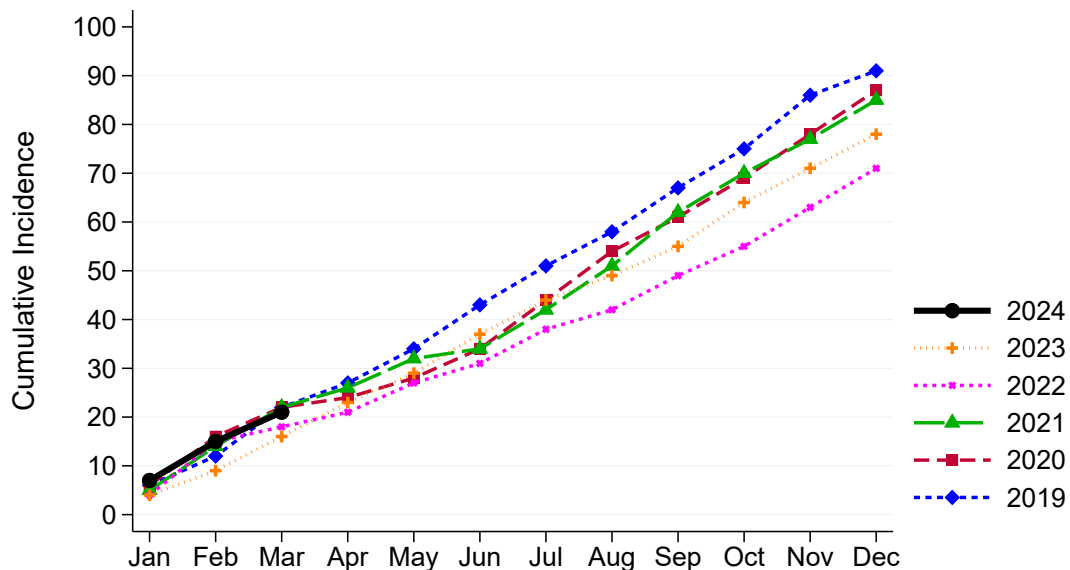
### Living Kidney Donors per Month

#### Australia



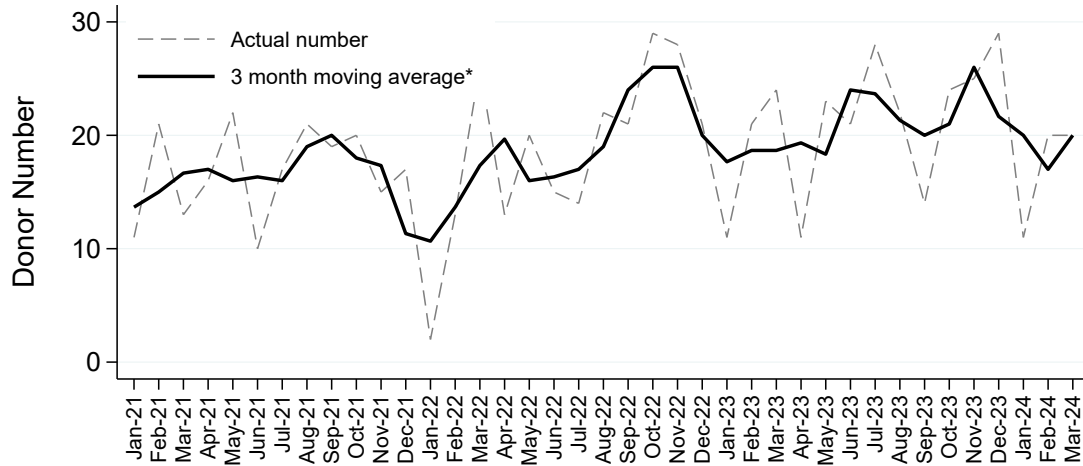
### Living Kidney Donors per Month

#### New Zealand



## Living Kidney Donors per Month

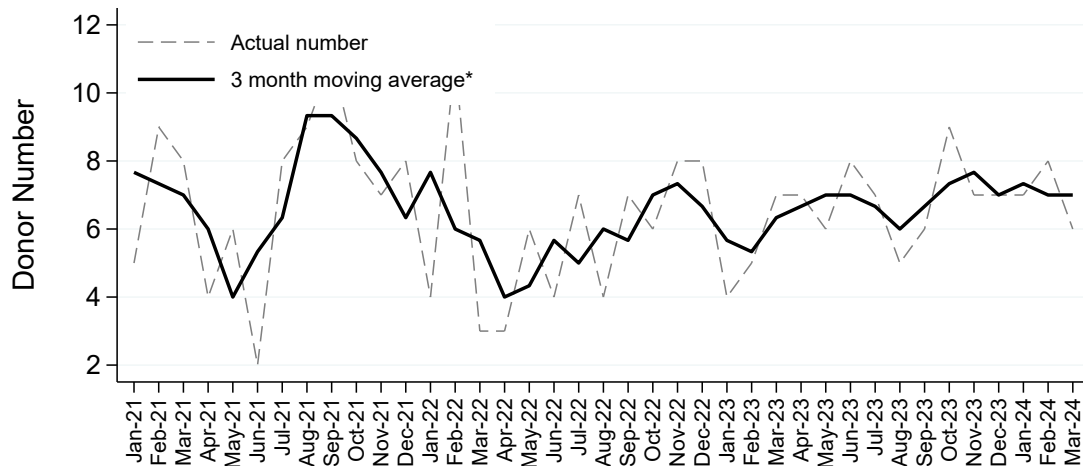
### Australia



\*The average is calculated from the number of living kidney donors in the current month, previous month and next month; except for the most recent month which is calculated from the previous and current months.

## Living Kidney Donors per Month

### New Zealand



\*The average is calculated from the number of living kidney donors in the current month, previous month and next month; except for the most recent month which is calculated from the previous and current months.

## Total Australian and New Zealand Living Kidney Donors by Donor Country

	Jan	Feb	Mar	Apr	May	Jun	Jul	Aug	Sep	Oct	Nov	Dec	Total
<b>AUSTRALIA</b>	11	20	20										<b>51</b>
<b>NEW ZEALAND</b>	7	8	6										<b>21</b>

## Australian and New Zealand Genetically-Related Donors by Donor Country

Genetically-related donors includes all degrees of genetically related donors such as siblings, parents, children etc.

	Jan	Feb	Mar	Apr	May	Jun	Jul	Aug	Sep	Oct	Nov	Dec	Total
<b>AUSTRALIA</b>	3	7	13										<b>23</b>
<b>NEW ZEALAND</b>	4	4	1										<b>9</b>

## Australian and New Zealand Emotionally-Related Donors by Donor Country

Emotionally-related donors includes donors who have an emotional or social attachment to the recipient, but are not genetically related. This includes spouses and friends. Donors for the Australian and New Zealand Paired Kidney Exchange Program are also unrelated genetically, but are listed separately.

	Jan	Feb	Mar	Apr	May	Jun	Jul	Aug	Sep	Oct	Nov	Dec	Total
<b>AUSTRALIA</b>	6	5	5										<b>16</b>
<b>NEW ZEALAND</b>	3	2	2										<b>7</b>

## Australian and New Zealand Unrelated Donors by Donor Country

Inclusive of unrelated “non-directed, wait list”, “non-directed, kidney exchange”, “directed kidney exchange”, “pathological” and “other unrelated”.

	Jan	Feb	Mar	Apr	May	Jun	Jul	Aug	Sep	Oct	Nov	Dec	Total
<b>AUSTRALIA</b>	2	8	2										<b>12</b>
<b>NEW ZEALAND</b>	0	2	3										<b>5</b>

## Donors in the Australian and New Zealand Paired Kidney Exchange Program (ANZKX) by Donor Country

Donors for the ANZKX Program are included in the unrelated donor numbers above. Inclusive of 3 relationship to recipient “non-directed, wait list” donors facilitated through the ANZKX Program.

	Jan	Feb	Mar	Apr	May	Jun	Jul	Aug	Sep	Oct	Nov	Dec	Total
<b>AUSTRALIA</b>	2	8	2										<b>12</b>
<b>NEW ZEALAND</b>	0	2	3										<b>5</b>

## Transplant Recipients from Australian and New Zealand Living Kidney Donors

### Recipients from Australian and New Zealand Donors by Country of Donation

	Jan	Feb	Mar	Apr	May	Jun	Jul	Aug	Sep	Oct	Nov	Dec	Total
<b>AUSTRALIA</b>	11	20	20										<b>51</b>
<b>NEW ZEALAND</b>	7	8	6										<b>21</b>

### Recipients from Australian and New Zealand Donors by Country of Transplantation

	Jan	Feb	Mar	Apr	May	Jun	Jul	Aug	Sep	Oct	Nov	Dec	Total
<b>AUSTRALIA</b>	11	20	20										<b>51</b>
<b>NEW ZEALAND</b>	7	8	6										<b>21</b>