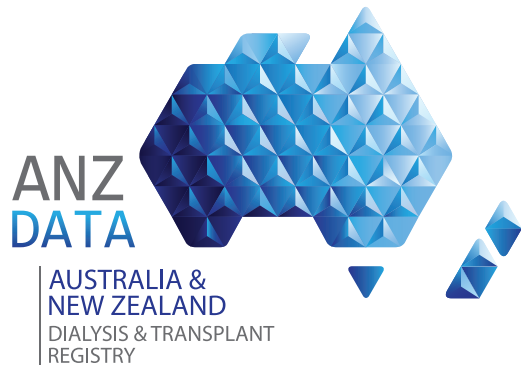


INTERIM



Quality Indicators

Annual Report

01 January 2023 - 31 December 2023

Real-Time Database

PUBLISHED 26 March 2024

The release of the Quality Indicator report is now an ANZDATA/ANZSN co-badged report. This information is provided as it is reported to ANZDATA. The reporting arrangements provide additional information to units on quality indicators. Units should use these data to monitor clinical practice and outcomes.

INTERIM

Note on Reports from the Real-Time Database

This report has been generated from the “real-time” database, as contributed by units at the date of publication. Results are dependent on the timeliness and completeness of data submission by units. We try to provide indices to allow evaluation of the completeness both overall and for individual hospitals. However, results are preliminary and subject to change. The subsequent report from the Analysis database, following the end of year survey, will provide the final results for this observation period.

Contents

1	Incidence of Peritonitis in Patients Treated with Peritoneal Dialysis	3
1.1	Adult	3
1.2	Paediatric	7
2	Dialysis Access Planning at Commencement of Dialysis	8
2.1	All Dialysis Access Planning	8
2.1.1	Adult	8
2.1.2	Paediatric	13
2.2	Vascular Access at First Haemodialysis	14
2.2.1	Adult	14
2.3	HD Vascular Access Planning	20
2.3.1	Adult	20
2.3.2	Paediatric	25
2.4	PD Catheter Planning	26
2.4.1	Adult	26
2.4.2	Paediatric	30
3	Transplantation Wait Listing	31
3.1	Adult	31
3.2	Paediatric	36
4	ANZDATA annual data survey timeliness	37
5	Kidney Replacement Therapy (KRT) Modality	41
5.1	Incident Modality	41
5.1.1	Adult	41
5.1.2	Paediatric	45
5.2	Prevalent Modality	46
5.2.1	Adult	46
5.2.2	Paediatric	50

1 Incidence of Peritonitis in Patients Treated with Peritoneal Dialysis

1.1 Adult

This table presents the total number of peritonitis episodes and patient exposure in years by Centre. Patient totals, exposure and peritonitis episodes were determined using the hospital at which the patient was receiving treatment at the time. So, if a patient transferred units during the observation period, the subsequent exposure and peritonitis episodes were allocated to the new unit. Months per episode (PM per Episode) is also reported. This should be interpreted as the average number of months between episodes of peritonitis; it can not be calculated if the peritonitis rate is zero. The 2022 episodes are based on the 2022 analysis database and are provided to allow assessment of possible under-reporting. This is a particular issue with peritonitis reporting. Patients are excluded from this adult report if they were treated at a paediatric hospital. In rare cases when patients younger than 18 years are treated at an adult centre, they are included in this adult report. Any patients 18 years and older treated at a paediatric hospital are excluded from this report. This quality indicator is presented for Australia only as New Zealand peritonitis episode data is reported through the New Zealand Peritoneal Dialysis Registry.

Centre	PD Patients	No of Episodes	Person Years	Rate (95% CI)	PM per Episode (95% CI)	2022 Episodes
Australia	3824	707	2652.48	0.27 (0.25-0.29)	45.02 (41.82-48.53)	780
Queensland	700	148	482.13	0.31 (0.26-0.36)	39.09 (33.28-46.24)	154
Bundaberg Hospital	16	7	10.98	0.64 (0.26-1.31)	18.83 (9.14-46.82)	0
Cairns Hospital	55	20	38.09	0.53 (0.32-0.81)	22.86 (14.80-37.42)	12
Gold Coast University Hospital	69	7	47.93	0.15 (0.06-0.30)	82.17 (39.88-204.38)	15
Hervey Bay Hospital	23	6	16.23	0.37 (0.14-0.80)	32.45 (14.91-88.44)	8
Ipswich Hospital	23	6	13.74	0.44 (0.16-0.95)	27.48 (12.62-74.87)	1
Mackay Base Hospital	23	2	12.44	0.16 (0.02-0.58)	74.61 (20.65-616.09)	3
Princess Alexandra Hospital	225	50	157.23	0.32 (0.24-0.42)	37.74 (28.62-50.84)	52
Queensland Kidney Transplant Service	2	0	0.13	0.00 (0.00-28.67)	. (0.42-.)	0
Rockhampton Hospital	16	1	13.59	0.07 (0.00-0.41)	163.09 (29.27-6441.64)	0
Royal Brisbane and Women's Hospital	108	13	75.56	0.17 (0.09-0.29)	69.74 (40.79-130.99)	26
Sunshine Coast University Hospital	22	3	12.76	0.24 (0.05-0.69)	51.06 (17.47-247.57)	4
Toowoomba Hospital	54	15	36.73	0.41 (0.23-0.67)	29.38 (17.82-52.50)	13
Townsville University Hospital	64	18	46.72	0.39 (0.23-0.61)	31.14 (19.71-52.55)	20
New South Wales	1366	270	1000.72	0.27 (0.24-0.30)	44.48 (39.48-50.30)	328
Coffs Harbour Hospital	4	0	2.48	0.00 (0.00-1.49)	. (8.07-.)	0
Concord Repatriation General Hospital	54	12	37.21	0.32 (0.17-0.56)	37.21 (21.30-72.01)	13
Dubbo Base Hospital	13	2	10.45	0.19 (0.02-0.69)	62.70 (17.36-517.75)	0
Gosford Hospital	31	2	21.78	0.09 (0.01-0.33)	130.68 (36.18-1079.05)	8

continued on next page

continued from previous page

Centre	PD Patients	No of Episodes	Person Years	Rate (95% CI)	PM per Episode (95% CI)	2022 Episodes
John Hunter Hospital	87	26	50.59	0.51 (0.34-0.75)	23.35 (15.93-35.74)	23
Lismore Base Hospital	24	13	16.45	0.79 (0.42-1.35)	15.18 (8.88-28.52)	3
Manning Rural Hospital	17	1	9.94	0.10 (0.00-0.56)	119.33 (21.42-4713.14)	4
Nepean Hospital	64	21	52.24	0.40 (0.25-0.61)	29.85 (19.53-48.22)	26
Orange Health Service	17	0	11.34	0.00 (0.00-0.33)	(36.88-)	2
Port Macquarie Base Hospital	16	7	10.18	0.69 (0.28-1.42)	17.45 (8.47-43.39)	7
Royal North Shore Hospital	81	8	59.27	0.13 (0.06-0.27)	88.90 (45.12-205.91)	12
Royal Prince Alfred Hospital	56	11	37.73	0.29 (0.15-0.52)	41.16 (23.00-82.45)	10
South West Sydney Renal Service	298	60	232.42	0.26 (0.20-0.33)	46.48 (36.11-60.91)	89
St George Hospital	63	7	39.67	0.18 (0.07-0.36)	68.00 (33.01-169.14)	9
St Vincent's Hospital Sydney	28	2	20.91	0.10 (0.01-0.35)	125.47 (34.73-1036.05)	4
Tamworth Hospital	21	5	13.47	0.37 (0.12-0.87)	32.32 (13.85-99.54)	7
The Prince of Wales Hospital	40	5	25.51	0.20 (0.06-0.46)	61.22 (26.23-188.55)	3
The Tweed Hospital	16	2	13.37	0.15 (0.02-0.54)	80.21 (22.21-662.35)	4
Wagga Wagga Base Hospital	22	7	14.85	0.47 (0.19-0.97)	25.46 (12.36-63.33)	2
Westmead Hospital	348	74	271.33	0.27 (0.21-0.34)	44.00 (35.05-56.04)	93
Wollongong Hospital	66	5	49.54	0.10 (0.03-0.24)	118.91 (50.95-366.21)	9
Australian Capital Territory	55	11	39.00	0.28 (0.14-0.50)	42.54 (23.78-85.22)	8
Canberra Hospital	55	11	39.00	0.28 (0.14-0.50)	42.54 (23.78-85.22)	8
Victoria	921	106	619.16	0.17 (0.14-0.21)	70.09 (57.95-85.61)	119
Alfred Hospital	110	18	84.68	0.21 (0.13-0.34)	56.46 (35.72-95.26)	25
Austin Hospital	50	4	33.25	0.12 (0.03-0.31)	99.76 (38.96-366.14)	1
Bendigo Hospital	51	11	36.32	0.30 (0.15-0.54)	39.63 (22.15-79.38)	6
Eastern Health Integrated Renal Services	53	6	34.58	0.17 (0.06-0.38)	69.15 (31.77-188.44)	12
Monash Medical Centre	185	17	117.80	0.14 (0.08-0.23)	83.15 (51.94-142.74)	26
Northern Health Service Melbourne	54	5	35.75	0.14 (0.05-0.33)	85.79 (36.76-264.21)	7
St Vincent's Hospital Melbourne	111	17	72.19	0.24 (0.14-0.38)	50.96 (31.83-87.48)	15
The Royal Melbourne Hospital	150	18	96.58	0.19 (0.11-0.29)	64.39 (40.74-108.64)	18
University Hospital Geelong Barwon Health	40	3	21.24	0.14 (0.03-0.41)	84.95 (29.07-411.93)	2
Western Health Service	117	7	86.77	0.08 (0.03-0.17)	148.74 (72.19-369.95)	7
Tasmania	73	14	47.19	0.30 (0.16-0.50)	40.45 (24.11-73.99)	16

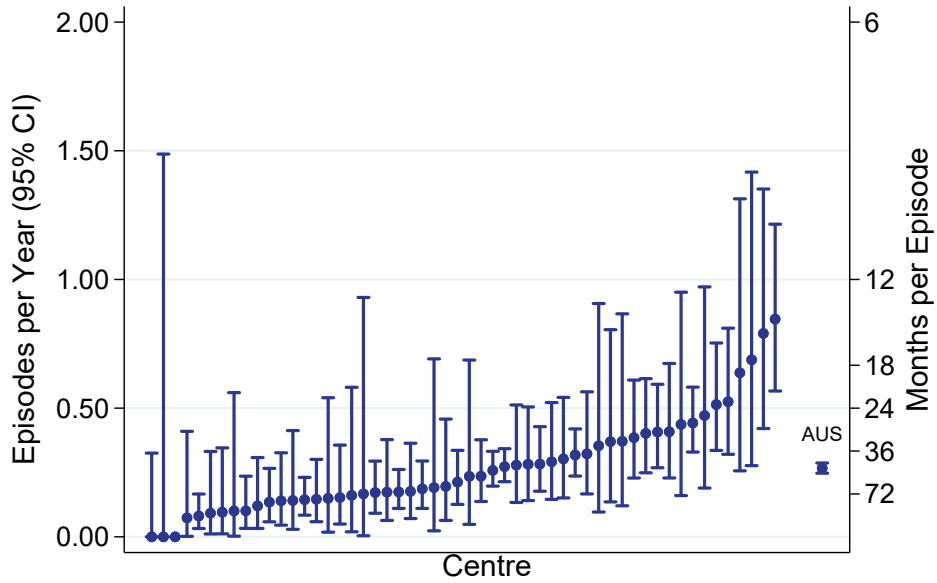
continued on next page

continued from previous page

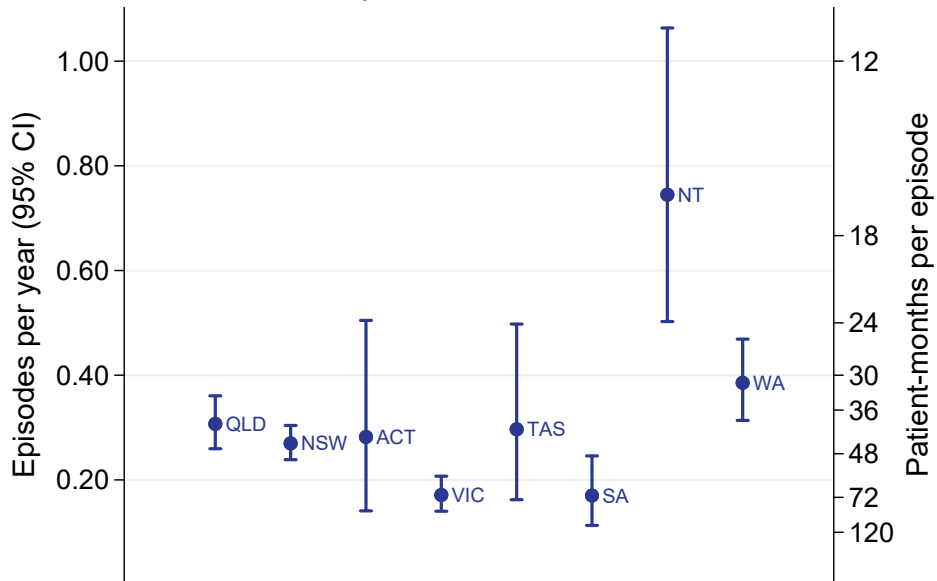
Centre	PD Patients	No of Episodes	Person Years	Rate (95% CI)	PM per Episode (95% CI)	2022 Episodes
Launceston General Hospital	53	10	35.89	0.28 (0.13-0.51)	43.07 (23.42-89.82)	11
Royal Hobart Hospital	20	4	11.30	0.35 (0.10-0.91)	33.90 (13.24-124.41)	5
South Australia	250	28	164.60	0.17 (0.11-0.25)	70.54 (48.81-106.16)	38
Central Northern Adelaide Renal Service	198	23	131.86	0.17 (0.11-0.26)	68.80 (45.85-108.53)	30
Flinders Medical Centre	52	5	32.74	0.15 (0.05-0.36)	78.57 (33.67-241.99)	8
Northern Territory	73	30	40.28	0.74 (0.50-1.06)	16.11 (11.29-23.88)	33
Alice Springs Hospital	11	1	5.99	0.17 (0.00-0.93)	71.89 (12.90-2839.31)	1
Royal Darwin Hospital	62	29	34.29	0.85 (0.57-1.21)	14.19 (9.88-21.18)	32
Western Australia	386	100	259.40	0.39 (0.31-0.47)	31.13 (25.59-38.26)	84
Fiona Stanley Hospital	118	22	77.83	0.28 (0.18-0.43)	42.45 (28.04-67.74)	13
Royal Perth Hospital	96	27	66.29	0.41 (0.27-0.59)	29.46 (20.25-44.70)	23
Sir Charles Gairdner Hospital	172	51	115.29	0.44 (0.33-0.58)	27.13 (20.63-36.43)	48

INTERIM

PD Peritonitis Rate, Adults
01 January 2023 - 31 December 2023



PD Peritonitis Rate, Adults
By Jurisdiction, 2023



1.2 Paediatric

This table presents the total number of peritonitis episodes and patient exposure in years by Centre. Patient totals, exposure and peritonitis episodes were determined using the hospital at which the patient was receiving treatment at the time. So, if a patient transferred units during the observation period, the subsequent exposure and peritonitis episodes were allocated to the new unit. Months per episode (PM per Episode) is also reported. This should be interpreted as the average number of months between episodes of peritonitis; it can not be calculated if the peritonitis rate is zero. The 2022 episodes are based on the 2022 analysis database and are provided to allow assessment of possible under-reporting. This is a particular issue with peritonitis reporting. Patients are included in this paediatric report if they were treated at a paediatric hospital. In rare cases when patients younger than 18 years are treated at an adult centre, they are included in the adult report. Any patients 18 years and older treated at a paediatric hospital are included in this report.

Centre	PD Patients	No of Episodes	Person Years	Rate (95% CI)	PM per Episode (95% CI)	2022 Episodes
Australia	79	25	46.26	0.54 (0.35-0.80)	22.21 (15.04-34.31)	14
Queensland	27	11	13.00	0.85 (0.42-1.51)	14.18 (7.93-28.41)	4
Child and Adolescent Renal Service	27	11	13.00	0.85 (0.42-1.51)	14.18 (7.93-28.41)	4
New South Wales	14	2	7.92	0.25 (0.03-0.91)	47.52 (13.16-392.42)	5
Sydney Children's Hospital	10	2	4.95	0.40 (0.05-1.46)	29.68 (8.22-245.11)	4
The Children's Hospital at Westmead	4	0	2.97	0.00 (0.00-1.24)	. (9.67-.)	1
Victoria	27	10	16.69	0.60 (0.29-1.10)	20.03 (10.89-41.77)	5
Monash Children's Centre	12	3	6.86	0.44 (0.09-1.28)	27.44 (9.39-133.08)	2
Royal Children's Hospital	15	7	9.83	0.71 (0.29-1.47)	16.85 (8.18-41.92)	3
South Australia	6	0	5.26	0.00 (0.00-0.70)	. (17.12-.)	0
Women's and Children's Hospital	6	0	5.26	0.00 (0.00-0.70)	. (17.12-.)	0
Western Australia	5	2	3.38	0.59 (0.07-2.13)	20.30 (5.62-167.66)	0
Perth Children's Hospital	5	2	3.38	0.59 (0.07-2.13)	20.30 (5.62-167.66)	0
New Zealand	11	5	6.64	0.75 (0.24-1.76)	15.94 (6.83-49.09)	7
Starship Children's Hospital	11	5	6.64	0.75 (0.24-1.76)	15.94 (6.83-49.09)	7

2 Dialysis Access Planning at Commencement of Dialysis

2.1 All Dialysis Access Planning

2.1.1 Adult

This table presents the numbers of patients beginning haemodialysis or peritoneal dialysis and the percentage starting with a permanent access (an AVF or AVG for haemodialysis and all peritoneal dialysis patients) during the observation window by Centre, where dialysis was the first kidney replacement therapy. Patients are excluded from this adult report if they were treated at a paediatric hospital. In rare cases when patients younger than 18 years are treated at an adult centre, they are included in this adult report. Any patients 18 years and older treated at a paediatric hospital are excluded from this report. Some Centres did not report type of first access for all new HD patients. The percent beginning with a permanent access is based on the number of patients with data available for first access. The number of new dialysis patients for 2022 from the analysis database is also provided to allow assessment of possible under-reporting. Finally, the total of Early Referrals (patients seen more than 3 months before first treatment) and the percentage of Early Referrals with a permanent access are also presented.

Centre	Dialysis Patients	AVF or AVG or PD	Vascular Catheter	Missing Access Data	2022 Dialysis Patients	% of AVF or AVG or PD (95 % CI)	Early Referral	% of Early Referrals with AVF or AVG or PD
Australia	3212	1757	1447	8	3274	55 (53-57)	2613	63 (61-64)
Queensland	687	342	343	2	634	50 (46-54)	575	58 (53-62)
Bundaberg Hospital	12	8	4	0	15	67 (35-90)	11	64 (31-89)
Cairns Hospital	61	26	35	0	69	43 (30-56)	45	56 (40-70)
Cairns Private Hospital	2	0	2	0	0	0 (0-84)	1	0 (0-98)
Chermside Dialysis Centre	14	7	7	0	12	50 (23-77)	11	64 (31-89)
Gold Coast Private Hospital	10	1	9	0	19	10 (0-45)	4	25 (1-81)
Gold Coast University Hospital	44	23	21	0	48	52 (37-68)	37	59 (42-75)
Henry Dalziel Dialysis Clinic - Greenslopes	37	19	18	0	22	51 (34-68)	37	51 (34-68)
Hervey Bay Hospital	18	14	4	0	17	78 (52-94)	16	88 (62-98)
Ipswich Hospital	42	17	25	0	20	40 (26-57)	32	47 (29-65)
John Flynn Private Hospital	10	6	4	0	11	60 (26-88)	10	60 (26-88)
Mackay Base Hospital	25	18	6	1	25	75 (53-90)	24	75 (53-90)
Mater Hospital, Brisbane	11	4	7	0	15	36 (11-69)	7	57 (18-90)
Mater Hospital, Townsville	13	6	7	0	6	46 (19-75)	11	55 (23-83)
North Lakes Dialysis Centre	7	4	3	0	9	57 (18-90)	7	57 (18-90)
Pindara Renal Unit	5	5	0	0	6	100 (48-100)	5	100 (48-100)
Princess Alexandra Hospital	114	65	49	0	97	57 (47-66)	104	60 (50-69)

continued on next page

continued from previous page

Centre	Dialysis Patients	AVF or AVG or PD	Vascular Catheter	Missing Access Data	2022 Dialysis Patients	% of AVF or AVG or PD (95 % CI)	Early Referral	% of Early Referrals with AVF or AVG or PD
Rockhampton Hospital	12	3	9	0	14	25 (5-57)	8	38 (9-76)
Royal Brisbane and Women's Hospital	56	31	24	1	72	56 (42-70)	46	65 (50-79)
St Andrew's Ipswich Private Hospital	13	6	7	0	6	46 (19-75)	12	50 (21-79)
St Andrew's Toowoomba B.Braun's Dialysis Clinic	3	2	1	0	6	67 (9-99)	3	67 (9-99)
Sunshine Coast University Hospital	46	20	26	0	35	43 (29-59)	39	51 (35-68)
Sunshine Coast University Private Hospital	4	4	0	0	3	100 (40-100)	3	100 (29-100)
The Wesley Hospital Brisbane	45	7	38	0	14	16 (6-29)	27	26 (11-46)
Toowoomba Hospital	38	27	11	0	29	71 (54-85)	37	73 (56-86)
Torres & Cape Kidney Health	2	2	0	0	0	100 (16-100)	2	100 (16-100)
Townsville University Hospital	43	17	26	0	61	40 (25-56)	36	44 (28-62)
New South Wales	838	486	350	2	972	58 (55-62)	686	66 (63-70)
Bathurst Base Hospital	3	1	2	0	7	33 (1-91)	3	33 (1-91)
Coffs Harbour Hospital	4	2	2	0	15	50 (7-93)	4	50 (7-93)
Concord Repatriation General Hospital	21	14	7	0	32	67 (43-85)	17	76 (50-93)
Dubbo Base Hospital	15	12	3	0	10	80 (52-96)	14	86 (57-98)
Gosford Hospital	42	19	23	0	50	45 (30-61)	25	60 (39-79)
Gregory Hills B.Braun Renal Care Centre	9	1	8	0	7	11 (0-48)	9	11 (0-48)
John Hunter Hospital	57	35	22	0	69	61 (48-74)	46	74 (59-86)
Lismore Base Hospital	27	21	6	0	13	78 (58-91)	24	83 (63-95)
Manning Rural Hospital	9	5	4	0	8	56 (21-86)	6	83 (36-100)
Mater Hospital, North Sydney	2	0	2	0	5	0 (0-84)	2	0 (0-84)
Nepean Hospital	35	22	13	0	49	63 (45-79)	30	70 (51-85)
Newcastle Dialysis Centre	5	4	1	0	5	80 (28-99)	4	100 (40-100)
Orange Health Service	16	12	4	0	11	75 (48-93)	16	75 (48-93)
Port Macquarie Base Hospital	16	11	5	0	16	69 (41-89)	12	92 (62-100)
Royal North Shore Hospital	57	36	21	0	68	63 (49-76)	49	65 (50-78)
Royal Prince Alfred Hospital	47	27	20	0	53	57 (42-72)	41	63 (47-78)
South West Sydney Renal Service	103	65	38	0	163	63 (53-72)	98	62 (52-72)
St George Hospital	41	22	19	0	55	54 (37-69)	31	58 (39-75)
St Vincent's Hospital Sydney	29	7	21	1	32	25 (11-45)	15	40 (16-68)
St Vincent's Lismore Private Dialysis Centre	7	5	2	0	1	71 (29-96)	7	71 (29-96)

continued on next page

continued from previous page

Centre	Dialysis Patients	AVF or AVG or PD	Vascular Catheter	Missing Access Data	2022 Dialysis Patients	% of AVF or AVG or PD (95 % CI)	Early Referral	% of Early Referrals with AVF or AVG or PD
Sydney Adventist Hospital	7	4	3	0	6	57 (18-90)	7	57 (18-90)
Tamworth Hospital	29	17	12	0	18	59 (39-76)	25	64 (43-82)
The Prince of Wales Hospital	22	14	8	0	28	64 (41-83)	21	67 (43-85)
The Tweed Hospital	14	5	9	0	12	36 (13-65)	13	31 (9-61)
Wagga Wagga Base Hospital	31	9	22	0	25	29 (14-48)	17	53 (28-77)
Westmead Hospital	153	96	56	1	167	63 (55-71)	128	72 (63-79)
Wollongong Hospital	37	20	17	0	41	54 (37-71)	22	73 (50-89)
Australian Capital Territory	59	23	36	0	80	39 (27-53)	48	48 (33-63)
Access Nephrology	9	8	1	0	11	89 (52-100)	9	89 (52-100)
Canberra Hospital	50	15	35	0	69	30 (18-45)	39	38 (23-55)
Victoria	837	468	367	2	771	56 (53-59)	695	62 (58-65)
Alfred Hospital	68	26	41	1	67	39 (27-51)	55	42 (29-56)
Austin Hospital	75	35	40	0	76	47 (35-59)	70	49 (36-61)
Bendigo Hospital	29	20	9	0	26	69 (49-85)	25	68 (46-85)
Diamond Valley B.Braun Renal Care Centre	2	0	2	0	5	0 (0-84)	2	0 (0-84)
Eastern Health Integrated Renal Services	54	38	16	0	43	70 (56-82)	45	80 (65-90)
Epworth Eastern Hospital	11	6	5	0	5	55 (23-83)	9	67 (30-93)
Epworth Geelong Hospital	2	1	1	0	0	50 (1-99)	2	50 (1-99)
Epworth Richmond Hospital	10	2	8	0	4	20 (3-56)	9	22 (3-60)
Forest Hill Dialysis Centre	6	6	0	0	7	100 (54-100)	5	100 (48-100)
Malvern Dialysis Centre	11	4	7	0	16	36 (11-69)	8	38 (9-76)
Monash Medical Centre	168	109	59	0	162	65 (57-72)	135	73 (65-81)
North Melbourne B.Braun Renal Care Centre	2	2	0	0	2	100 (16-100)	2	100 (16-100)
Northern Health Service Melbourne	53	27	25	1	55	52 (38-66)	46	57 (41-71)
St Vincent's Hospital Melbourne	69	37	32	0	71	54 (41-66)	55	64 (50-76)
The Royal Melbourne Hospital	121	70	51	0	122	58 (49-67)	102	63 (53-72)
University Hospital Geelong Barwon Health	59	32	27	0	29	54 (41-67)	47	62 (46-75)
Western Health Service	97	53	44	0	78	55 (44-65)	78	60 (49-71)
Tasmania	47	32	15	0	64	68 (53-81)	38	74 (57-87)

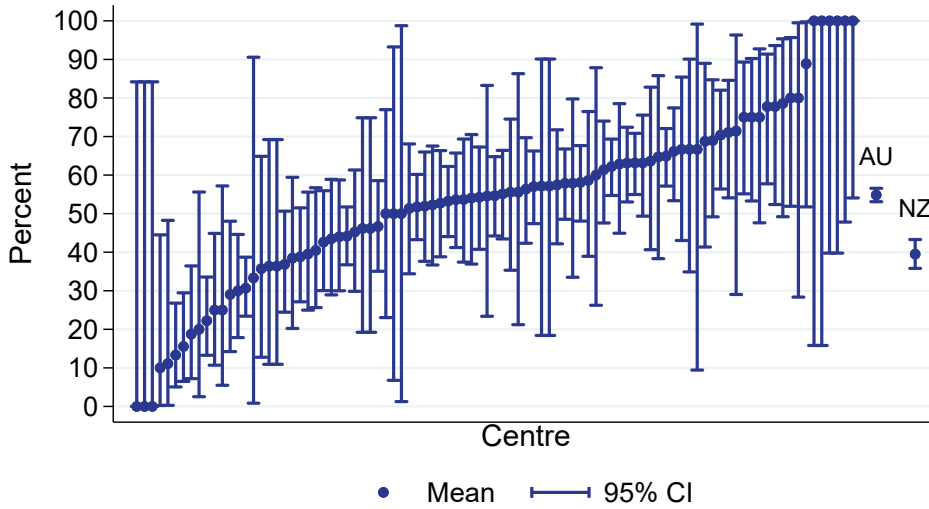
continued on next page

continued from previous page

Centre	Dialysis Patients	AVF or AVG or PD	Vascular Catheter	Missing Access Data	2022 Dialysis Patients	% of AVF or AVG or PD (95 % CI)	Early Referral	% of Early Referrals with AVF or AVG or PD
Launceston General Hospital	28	21	7	0	43	75 (55-89)	24	88 (68-97)
Royal Hobart Hospital	19	11	8	0	21	58 (33-80)	14	50 (23-77)
South Australia	235	141	94	0	232	60 (53-66)	195	70 (63-77)
Central Northern Adelaide Renal Service	180	112	68	0	184	62 (55-69)	153	72 (64-79)
Flinders Medical Centre	55	29	26	0	48	53 (39-66)	42	64 (48-78)
Northern Territory	135	64	71	0	145	47 (39-56)	119	50 (40-59)
Alice Springs Hospital	57	21	36	0	65	37 (24-51)	53	38 (25-52)
Royal Darwin Hospital	78	43	35	0	80	55 (43-66)	66	59 (46-71)
Western Australia	374	201	171	2	376	54 (49-59)	257	68 (62-73)
Fiona Stanley Hospital	143	74	69	0	140	52 (43-60)	70	79 (67-87)
Royal Perth Hospital	124	66	58	0	130	53 (44-62)	110	59 (49-68)
Sir Charles Gairdner Hospital	107	61	44	2	106	58 (48-68)	77	70 (59-80)
New Zealand	682	269	412	1	653	40 (36-43)	568	44 (40-48)
Auckland City Hospital	72	16	56	0	69	22 (13-34)	66	23 (13-35)
Bay of Plenty Renal Unit	4	4	0	0	0	100 (40-100)	4	100 (40-100)
Christchurch Hospital	51	22	28	1	38	44 (30-59)	40	50 (34-66)
Dunedin Hospital	17	11	6	0	30	65 (38-86)	14	79 (49-95)
Hawkes Bay Hospital	27	15	12	0	17	56 (35-75)	25	60 (39-79)
Middlemore Hospital	179	79	100	0	151	44 (37-52)	140	51 (42-59)
Palmerston North Hospital	32	6	26	0	16	19 (7-36)	23	17 (5-39)
Taranaki Hospital	14	11	3	0	10	79 (49-95)	14	79 (49-95)
Waikato Hospital	150	46	104	0	132	31 (23-39)	129	34 (26-43)
Waitemata Renal Service	45	6	39	0	87	13 (5-27)	34	12 (3-27)
Wellington Regional Hospital	65	43	22	0	79	66 (53-77)	58	71 (57-82)
Whangarei Hospital	26	10	16	0	24	38 (20-59)	21	38 (18-62)

All dialysis access planning (AVF/AVG or PD)
% of all dialysis starts, Adults

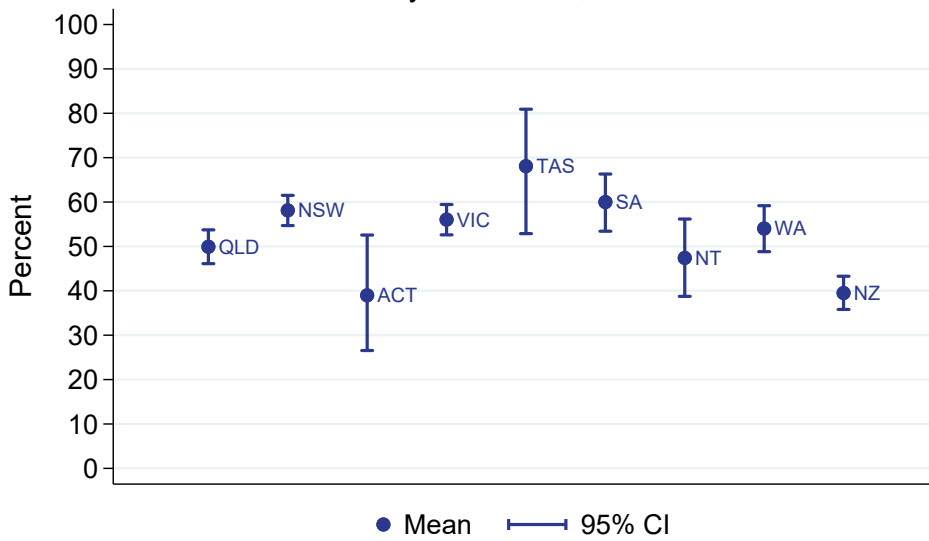
01 January 2023 - 31 December 2023



All adult dialysis starts including late referred patients

All dialysis access planning (AVF/AVG or PD)
% of all dialysis starts, Adults

By Jurisdiction, 2023



2.1.2 Paediatric

This table presents the numbers of patients beginning haemodialysis or peritoneal dialysis and the percentage starting with a permanent access (an AVF or AVG for haemodialysis and all peritoneal dialysis patients) during the observation window by Centre, where dialysis was the first kidney replacement therapy. Patients are included in this paediatric report if they were treated at a paediatric hospital. In rare cases when patients younger than 18 years are treated at an adult centre, they are included in the adult report. Any patients 18 years and older treated at a paediatric hospital are included in this report. The number of new dialysis patients for 2022 from the analysis database is also provided to allow assessment of possible under-reporting. Finally, the total of Early Referrals (patients seen more than 3 months before first treatment) and the percentage of Early Referrals with a permanent access are also presented.

Centre	Dialysis Patients	AVF or AVG or PD	Vascular Catheter	Missing Access Data	2022 Dialysis Patients	% of AVF or AVG or PD (95 % CI)	Early Referral	% of Early Referrals with AVF or AVG or PD
Australia	24	19	5	0	37	79 (58-93)	19	79 (54-94)
Queensland	6	4	2	0	9	67 (22-96)	5	80 (28-99)
Child and Adolescent Renal Service	6	4	2	0	9	67 (22-96)	5	80 (28-99)
New South Wales	3	3	0	0	10	100 (29-100)	2	100 (16-100)
Sydney Children's Hospital	2	2	0	0	5	100 (16-100)	2	100 (16-100)
The Children's Hospital at Westmead	1	1	0	0	5	100 (2-100)	0	-
Victoria	9	7	2	0	15	78 (40-97)	7	71 (29-96)
Monash Children's Centre	2	1	1	0	7	50 (1-99)	1	0 (0-98)
Royal Children's Hospital	7	6	1	0	8	86 (42-100)	6	83 (36-100)
South Australia	2	2	0	0	1	100 (16-100)	1	100 (2-100)
Women's and Children's Hospital	2	2	0	0	1	100 (16-100)	1	100 (2-100)
Western Australia	4	3	1	0	2	75 (19-99)	4	75 (19-99)
Perth Children's Hospital	4	3	1	0	2	75 (19-99)	4	75 (19-99)
New Zealand	5	3	2	0	6	60 (15-95)	3	67 (9-99)
Starship Children's Hospital	5	3	2	0	6	60 (15-95)	3	67 (9-99)

2.2 Vascular Access at First Haemodialysis

2.2.1 Adult

This table presents the numbers of patients beginning haemodialysis and the percentage starting with an AVF or AVG during the observation window by Centre, where HD was the first kidney replacement therapy. Patients are excluded from this adult report if they were treated at a paediatric hospital. In rare cases when patients younger than 18 years are treated at an adult centre, they are included in this adult report. Any patients 18 years and older treated at a paediatric hospital are excluded from this report. Some Centres did not report type of first access for all new HD patients. The percent beginning with AVF or AVG is based on the number of patients with data available for first access. The number of new HD patients for 2022 from the analysis database is also provided to allow assessment of possible under-reporting. Finally, the total of Early Referrals (patients seen more than 3 months before first treatment) and the percentage of Early Referrals with AVF or AVG are also presented.

Centre	HD Patients	AVF or AVG	Vascular Catheter	Missing Access Data	2022 HD Patients	% of AVF or AVG (95 % CI)	Early Referral	% of Early Referrals with AVF or AVG
Australia	2366	911	1447	8	2472	39 (37-41)	1832	47 (44-49)
Queensland	536	191	343	2	510	36 (32-40)	430	43 (39-48)
Bundaberg Hospital	8	4	4	0	14	50 (16-84)	7	43 (10-82)
Cairns Hospital	54	19	35	0	58	35 (23-49)	39	49 (32-65)
Cairns Private Hospital	2	0	2	0	0	0 (0-84)	1	0 (0-98)
Chermside Dialysis Centre	14	7	7	0	12	50 (23-77)	11	64 (31-89)
Gold Coast Private Hospital	10	1	9	0	19	10 (0-45)	4	25 (1-81)
Gold Coast University Hospital	31	10	21	0	41	32 (17-51)	24	38 (19-59)
Henry Dalziel Dialysis Clinic - Greenslopes	37	19	18	0	22	51 (34-68)	37	51 (34-68)
Hervey Bay Hospital	12	8	4	0	14	67 (35-90)	10	80 (44-97)
Ipswich Hospital	32	7	25	0	18	22 (9-40)	24	29 (13-51)
John Flynn Private Hospital	10	6	4	0	11	60 (26-88)	10	60 (26-88)
Mackay Base Hospital	17	10	6	1	24	62 (35-85)	16	62 (35-85)
Mater Hospital, Brisbane	11	4	7	0	15	36 (11-69)	7	57 (18-90)
Mater Hospital, Townsville	13	6	7	0	6	46 (19-75)	11	55 (23-83)
North Lakes Dialysis Centre	7	4	3	0	9	57 (18-90)	7	57 (18-90)
Pindara Renal Unit	5	5	0	0	6	100 (48-100)	5	100 (48-100)
Princess Alexandra Hospital	64	15	49	0	61	23 (14-36)	56	25 (14-38)
Rockhampton Hospital	11	2	9	0	10	18 (2-52)	7	29 (4-71)
Royal Brisbane and Women's Hospital	40	15	24	1	47	38 (23-55)	30	47 (28-66)
St Andrew's Ipswich Private Hospital	13	6	7	0	6	46 (19-75)	12	50 (21-79)

continued on next page

continued from previous page

Centre	HD Patients	AVF or AVG	Vascular Catheter	Missing Access Data	2022 HD Patients	% of AVF or AVG (95 % CI)	Early Referral	% of Early Referrals with AVF or AVG
St Andrew's Toowoomba B.Braun's Dialysis Clinic	3	2	1	0	6	67 (9-99)	3	67 (9-99)
Sunshine Coast University Hospital	41	15	26	0	30	37 (22-53)	34	44 (27-62)
Sunshine Coast University Private Hospital	4	4	0	0	3	100 (40-100)	3	100 (29-100)
The Wesley Hospital Brisbane	45	7	38	0	14	16 (6-29)	27	26 (11-46)
Toowoomba Hospital	18	7	11	0	12	39 (17-64)	17	41 (18-67)
Torres & Cape Kidney Health	2	2	0	0	0	100 (16-100)	2	100 (16-100)
Townsville University Hospital	32	6	26	0	49	19 (7-36)	26	23 (9-44)
New South Wales	562	210	350	2	687	38 (33-42)	432	46 (42-51)
Bathurst Base Hospital	3	1	2	0	7	33 (1-91)	3	33 (1-91)
Coffs Harbour Hospital	3	1	2	0	15	33 (1-91)	3	33 (1-91)
Concord Repatriation General Hospital	12	5	7	0	24	42 (15-72)	9	56 (21-86)
Dubbo Base Hospital	12	9	3	0	9	75 (43-95)	11	82 (48-98)
Gosford Hospital	39	16	23	0	46	41 (26-58)	22	55 (32-76)
Gregory Hills B.Braun Renal Care Centre	9	1	8	0	7	11 (0-48)	9	11 (0-48)
John Hunter Hospital	33	11	22	0	50	33 (18-52)	23	48 (27-69)
Lismore Base Hospital	19	13	6	0	9	68 (43-87)	17	76 (50-93)
Manning Rural Hospital	7	3	4	0	8	43 (10-82)	4	75 (19-99)
Mater Hospital, North Sydney	2	0	2	0	5	0 (0-84)	2	0 (0-84)
Nepean Hospital	26	13	13	0	29	50 (30-70)	21	57 (34-78)
Newcastle Dialysis Centre	5	4	1	0	5	80 (28-99)	4	100 (40-100)
Orange Health Service	11	7	4	0	8	64 (31-89)	11	64 (31-89)
Port Macquarie Base Hospital	15	10	5	0	14	67 (38-88)	11	91 (59-100)
Royal North Shore Hospital	31	10	21	0	49	32 (17-51)	27	37 (19-58)
Royal Prince Alfred Hospital	35	15	20	0	40	43 (26-61)	29	48 (29-67)
South West Sydney Renal Service	49	11	38	0	104	22 (12-37)	48	23 (12-37)
St George Hospital	28	9	19	0	37	32 (16-52)	22	41 (21-64)
St Vincent's Hospital Sydney	25	3	21	1	27	12 (3-32)	12	25 (5-57)
St Vincent's Lismore Private Dialysis Centre	7	5	2	0	1	71 (29-96)	7	71 (29-96)
Sydney Adventist Hospital	7	4	3	0	6	57 (18-90)	7	57 (18-90)
Tamworth Hospital	24	12	12	0	12	50 (29-71)	20	55 (32-77)
The Prince of Wales Hospital	17	9	8	0	22	53 (28-77)	16	56 (30-80)

continued on next page

continued from previous page

Centre	HD Patients	AVF or AVG	Vascular Catheter	Missing Access Data	2022 HD Patients	% of AVF or AVG (95 % CI)	Early Referral	% of Early Referrals with AVF or AVG
The Tweed Hospital	11	2	9	0	10	18 (2-52)	11	18 (2-52)
Wagga Wagga Base Hospital	29	7	22	0	20	24 (10-44)	15	47 (21-73)
Westmead Hospital	78	21	56	1	92	27 (18-39)	57	37 (24-51)
Wollongong Hospital	25	8	17	0	25	32 (15-54)	11	45 (17-77)
Australian Capital Territory	51	15	36	0	71	29 (17-44)	40	38 (23-54)
Access Nephrology	9	8	1	0	11	89 (52-100)	9	89 (52-100)
Canberra Hospital	42	7	35	0	60	17 (7-31)	31	23 (10-41)
Victoria	621	252	367	2	556	41 (37-45)	501	47 (42-51)
Alfred Hospital	55	13	41	1	38	24 (13-38)	45	29 (16-44)
Austin Hospital	64	24	40	0	71	38 (26-50)	59	39 (27-53)
Bendigo Hospital	18	9	9	0	16	50 (26-74)	16	50 (25-75)
Diamond Valley B.Braun Renal Care Centre	2	0	2	0	5	0 (0-84)	2	0 (0-84)
Eastern Health Integrated Renal Services	39	23	16	0	32	59 (42-74)	31	71 (52-86)
Epworth Eastern Hospital	11	6	5	0	5	55 (23-83)	9	67 (30-93)
Epworth Geelong Hospital	2	1	1	0	0	50 (1-99)	2	50 (1-99)
Epworth Richmond Hospital	10	2	8	0	4	20 (3-56)	9	22 (3-60)
Forest Hill Dialysis Centre	6	6	0	0	7	100 (54-100)	5	100 (48-100)
Malvern Dialysis Centre	11	4	7	0	16	36 (11-69)	8	38 (9-76)
Monash Medical Centre	118	59	59	0	108	50 (41-59)	91	60 (50-71)
North Melbourne B.Braun Renal Care Centre	2	2	0	0	2	100 (16-100)	2	100 (16-100)
Northern Health Service Melbourne	40	14	25	1	46	36 (21-53)	34	41 (25-59)
St Vincent's Hospital Melbourne	40	8	32	0	48	20 (9-36)	27	26 (11-46)
The Royal Melbourne Hospital	88	37	51	0	79	42 (32-53)	74	49 (37-61)
University Hospital Geelong Barwon Health	45	18	27	0	26	40 (26-56)	36	50 (33-67)
Western Health Service	70	26	44	0	50	37 (26-50)	51	39 (26-54)
Tasmania	31	16	15	0	46	52 (33-70)	24	58 (37-78)
Launceston General Hospital	17	10	7	0	28	59 (33-82)	13	77 (46-95)
Royal Hobart Hospital	14	6	8	0	18	43 (18-71)	11	36 (11-69)

continued on next page

continued from previous page

Centre	HD Patients	AVF or AVG	Vascular Catheter	Missing Access Data	2022 HD Patients	% of AVF or AVG (95 % CI)	Early Referral	% of Early Referrals with AVF or AVG
South Australia	174	80	94	0	182	46 (38-54)	137	58 (49-66)
Central Northern Adelaide Renal Service	128	60	68	0	143	47 (38-56)	102	58 (48-68)
Flinders Medical Centre	46	20	26	0	39	43 (29-59)	35	57 (39-74)
Northern Territory	118	47	71	0	131	40 (31-49)	106	43 (34-53)
Alice Springs Hospital	55	19	36	0	64	35 (22-49)	51	35 (22-50)
Royal Darwin Hospital	63	28	35	0	67	44 (32-58)	55	51 (37-65)
Western Australia	273	100	171	2	289	37 (31-43)	162	49 (41-57)
Fiona Stanley Hospital	100	31	69	0	111	31 (22-41)	28	46 (28-66)
Royal Perth Hospital	104	46	58	0	106	44 (34-54)	91	51 (40-61)
Sir Charles Gairdner Hospital	69	23	44	2	72	34 (23-47)	43	47 (31-62)
New Zealand	484	71	412	1	427	15 (12-18)	387	17 (14-21)
Auckland City Hospital	66	10	56	0	52	15 (8-26)	61	16 (8-28)
Christchurch Hospital	35	6	28	1	22	18 (7-35)	26	23 (9-44)
Dunedin Hospital	6	0	6	0	16	0 (0-46)	3	0 (0-71)
Hawkes Bay Hospital	16	4	12	0	9	25 (7-52)	14	29 (8-58)
Middlemore Hospital	130	30	100	0	115	23 (16-31)	97	29 (20-39)
Palmerston North Hospital	27	1	26	0	7	4 (0-19)	19	0 (0-18)
Taranaki Hospital	5	2	3	0	5	40 (5-85)	5	40 (5-85)
Waikato Hospital	107	3	104	0	73	3 (1-8)	88	3 (1-10)
Waitemata Renal Service	41	2	39	0	70	5 (1-17)	31	3 (0-17)
Wellington Regional Hospital	30	8	22	0	43	27 (12-46)	25	32 (15-54)
Whangarei Hospital	21	5	16	0	15	24 (8-47)	18	28 (10-53)

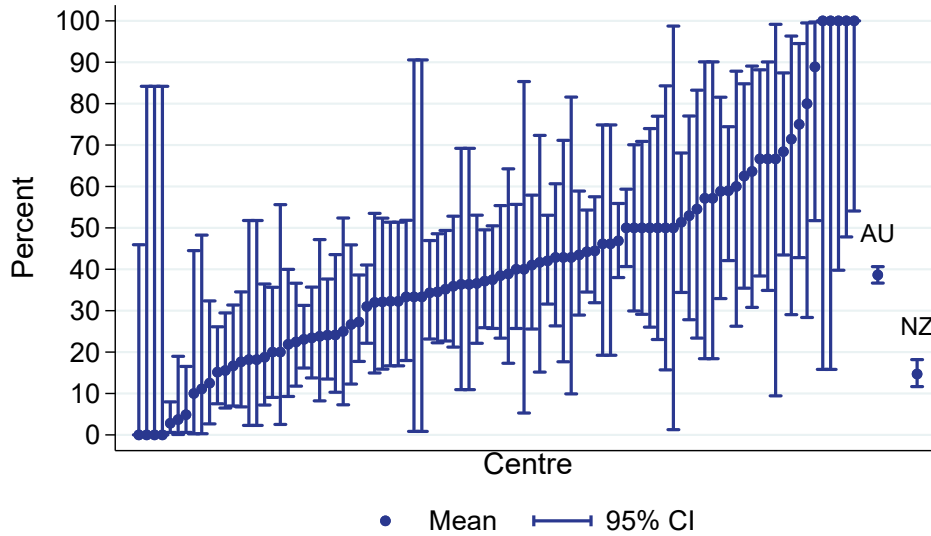
INTERIM

The following hospitals did not report any haemodialysis patients between 01 January 2023 and 31 December 2023:

State	Hospital
QLD	Nambour Selangor Private Hospital
NSW	Liverpool Private Dialysis Centre
	Mayo Private Hospital
	Port Macquarie Private Hospital
VIC	Sunshine Private Dialysis Centre Fresenius

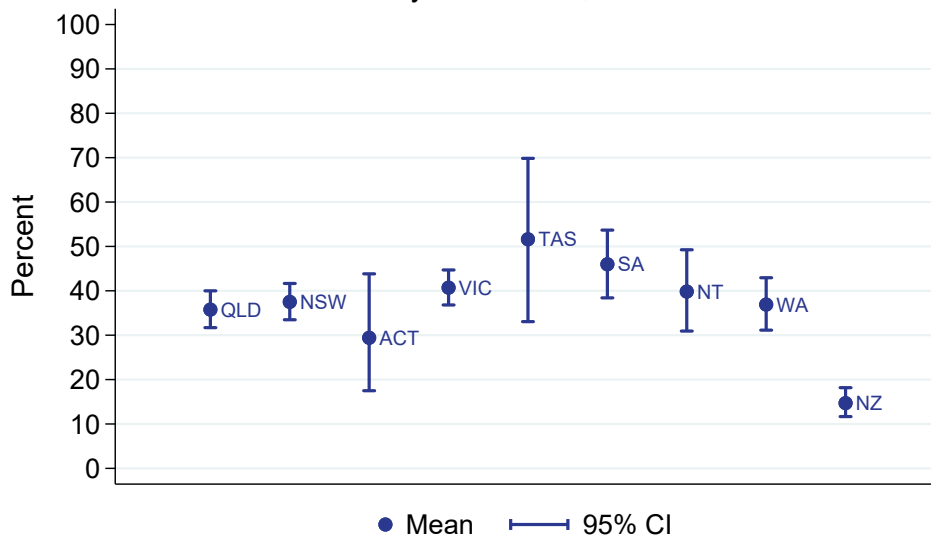
Vascular access at first HD (AVF/AVG)
% of all HD starts, Adults

01 January 2023 - 31 December 2023



Vascular access at first HD (AVF/AVG)
% of all HD starts, Adults

By Jurisdiction, 2023



2.3 HD Vascular Access Planning

2.3.1 Adult

This table presents the numbers of patients on haemodialysis at day 90 and the percentage starting haemodialysis with a permanent vascular access (an AVF or AVG) during the observation window by Centre. Modality changes of less than 30 days are ignored for the determination of modality at day 90. Patients are excluded from this adult report if they were treated at a paediatric hospital. In rare cases when patients younger than 18 years are treated at an adult centre, they are included in this adult report. Any patients 18 years and older treated at a paediatric hospital are excluded from this report. Some Centres did not report type of first access for all new HD patients. The percent beginning with a permanent access is based on the number of patients with data available for first access. The number of HD patients at day 90 for 2022 is also provided to allow assessment of possible under-reporting. Finally, the total of Early Referrals (patients seen more than 3 months before first treatment) and the percentage of Early Referrals with a permanent access are also presented.

Centre	HD Patients	AVF or AVG	Vascular Catheter	Missing Access Data	2022 HD Patients	% of AVF or AVG (95 % CI)	Early Referral	% of Early Referrals with AVF or AVG
Australia	2289	919	1354	16	2267	40 (38-42)	1819	48 (45-50)
Queensland	503	193	306	4	475	39 (34-43)	403	46 (41-51)
Bundaberg Hospital	11	5	6	0	14	45 (17-77)	9	44 (14-79)
Cairns Hospital	58	23	35	0	47	40 (27-53)	40	55 (38-71)
Cairns Private Hospital	2	0	2	0	1	0 (0-84)	1	0 (0-98)
Chermside Dialysis Centre	11	4	7	0	12	36 (11-69)	9	44 (14-79)
Gold Coast Private Hospital	8	1	7	0	15	12 (0-53)	3	33 (1-91)
Gold Coast University Hospital	31	11	19	1	37	37 (20-56)	23	43 (23-66)
Henry Dalziel Dialysis Clinic - Greenslopes	27	14	13	0	24	52 (32-71)	27	52 (32-71)
Hervey Bay Hospital	14	7	7	0	13	50 (23-77)	10	70 (35-93)
Ipswich Hospital	29	8	21	0	17	28 (13-47)	24	33 (16-55)
John Flynn Private Hospital	10	6	4	0	11	60 (26-88)	10	60 (26-88)
Mackay Base Hospital	18	12	6	0	20	67 (41-87)	18	67 (41-87)
Mater Hospital, Brisbane	13	6	7	0	12	46 (19-75)	9	67 (30-93)
Mater Hospital, Townsville	10	5	5	0	3	50 (19-81)	9	56 (21-86)
North Lakes Dialysis Centre	6	4	2	0	9	67 (22-96)	5	80 (28-99)
Pindara Renal Unit	7	7	0	0	5	100 (59-100)	7	100 (59-100)
Princess Alexandra Hospital	55	13	40	2	64	25 (14-38)	43	28 (15-44)
Rockhampton Hospital	9	2	7	0	14	22 (3-60)	6	33 (4-78)
Royal Brisbane and Women's Hospital	50	18	32	0	39	36 (23-51)	37	43 (27-61)
St Andrew's Ipswich Private Hospital	11	6	5	0	7	55 (23-83)	10	60 (26-88)

continued on next page

continued from previous page

Centre	HD Patients	AVF or AVG	Vascular Catheter	Missing Access Data	2022 HD Patients	% of AVF or AVG (95 % CI)	Early Referral	% of Early Referrals with AVF or AVG
St Andrew's Toowoomba B.Braun's Dialysis Clinic	3	1	2	0	5	33 (1-91)	2	50 (1-99)
Sunshine Coast University Hospital	32	14	18	0	27	44 (26-62)	26	54 (33-73)
Sunshine Coast University Private Hospital	7	6	1	0	5	86 (42-100)	6	83 (36-100)
The Wesley Hospital Brisbane	23	6	17	0	11	26 (10-48)	17	35 (14-62)
Toowoomba Hospital	18	6	12	0	10	33 (13-59)	17	35 (14-62)
Torres & Cape Kidney Health	2	2	0	0	0	100 (16-100)	2	100 (16-100)
Townsville University Hospital	38	6	31	1	51	16 (6-32)	33	18 (7-35)
New South Wales	575	225	344	6	608	40 (36-44)	460	47 (42-51)
Bathurst Base Hospital	3	1	2	0	8	33 (1-91)	3	33 (1-91)
Coffs Harbour Hospital	7	4	3	0	13	57 (18-90)	6	67 (22-96)
Concord Repatriation General Hospital	11	5	6	0	22	45 (17-77)	9	56 (21-86)
Dubbo Base Hospital	14	10	4	0	7	71 (42-92)	12	83 (52-98)
Gosford Hospital	34	18	16	0	42	53 (35-70)	25	60 (39-79)
Gregory Hills B.Braun Renal Care Centre	8	1	7	0	8	12 (0-53)	8	12 (0-53)
John Hunter Hospital	43	12	31	0	46	28 (15-44)	31	39 (22-58)
Lismore Base Hospital	18	10	8	0	13	56 (31-78)	16	62 (35-85)
Manning Rural Hospital	4	4	0	0	8	100 (40-100)	3	100 (29-100)
Mater Hospital, North Sydney	3	1	2	0	4	33 (1-91)	2	0 (0-84)
Mayo Private Hospital	1	1	0	0	2	100 (2-100)	0	-
Nepean Hospital	25	12	13	0	26	48 (28-69)	17	59 (33-82)
Newcastle Dialysis Centre	5	4	1	0	4	80 (28-99)	5	80 (28-99)
Orange Health Service	11	5	5	1	5	50 (19-81)	9	56 (21-86)
Port Macquarie Base Hospital	14	10	4	0	14	71 (42-92)	11	91 (59-100)
Royal North Shore Hospital	41	17	24	0	51	41 (26-58)	35	49 (31-66)
Royal Prince Alfred Hospital	31	13	17	1	34	43 (25-63)	25	48 (28-69)
South West Sydney Renal Service	85	17	65	3	76	21 (13-31)	81	21 (13-31)
St George Hospital	28	10	18	0	28	36 (19-56)	22	45 (24-68)
St Vincent's Hospital Sydney	21	4	17	0	26	19 (5-42)	9	44 (14-79)
St Vincent's Lismore Private Dialysis Centre	5	3	2	0	2	60 (15-95)	5	60 (15-95)
Sydney Adventist Hospital	7	4	3	0	5	57 (18-90)	7	57 (18-90)
Tamworth Hospital	19	12	7	0	10	63 (38-84)	19	63 (38-84)

continued on next page

continued from previous page

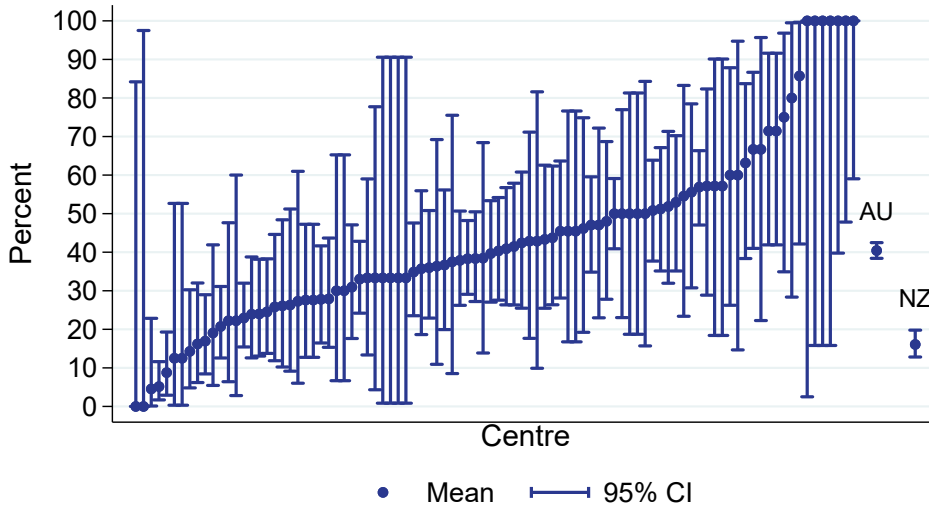
Centre	HD Patients	AVF or AVG	Vascular Catheter	Missing Access Data	2022 HD Patients	% of AVF or AVG (95 % CI)	Early Referral	% of Early Referrals with AVF or AVG
The Prince of Wales Hospital	14	6	8	0	17	43 (18-71)	14	43 (18-71)
The Tweed Hospital	8	3	5	0	6	38 (9-76)	8	38 (9-76)
Wagga Wagga Base Hospital	29	8	21	0	21	28 (13-47)	17	47 (23-72)
Westmead Hospital	67	25	41	1	73	38 (26-51)	51	49 (35-63)
Wollongong Hospital	19	5	14	0	30	26 (9-51)	10	40 (12-74)
Australian Capital Territory	58	18	40	0	58	31 (20-45)	49	37 (23-52)
Access Nephrology	8	6	2	0	8	75 (35-97)	8	75 (35-97)
Canberra Hospital	50	12	38	0	50	24 (13-38)	41	29 (16-46)
Victoria	557	242	312	3	524	44 (40-48)	462	49 (44-54)
Alfred Hospital	47	11	35	1	35	24 (13-39)	38	29 (15-46)
Austin Hospital	57	23	34	0	52	40 (28-54)	52	42 (29-57)
Bendigo Hospital	17	8	9	0	12	47 (23-72)	16	50 (25-75)
Diamond Valley B.Braun Renal Care Centre	3	1	2	0	5	33 (1-91)	3	33 (1-91)
Eastern Health Integrated Renal Services	41	21	20	0	27	51 (35-67)	32	62 (44-79)
Epworth Eastern Hospital	8	4	4	0	7	50 (16-84)	7	57 (18-90)
Epworth Geelong Hospital	1	0	1	0	0	0 (0-98)	1	0 (0-98)
Epworth Richmond Hospital	11	3	8	0	3	27 (6-61)	10	30 (7-65)
Forest Hill Dialysis Centre	5	5	0	0	9	100 (48-100)	4	100 (40-100)
Malvern Dialysis Centre	10	3	7	0	17	30 (7-65)	8	25 (3-65)
Monash Medical Centre	109	62	47	0	113	57 (47-66)	88	67 (56-77)
North Melbourne B.Braun Renal Care Centre	2	2	0	0	2	100 (16-100)	2	100 (16-100)
Northern Health Service Melbourne	34	14	19	1	45	42 (25-61)	29	48 (29-67)
St Vincent's Hospital Melbourne	42	13	29	0	48	31 (18-47)	31	39 (22-58)
Sunshine Private Dialysis Centre Fresenius	2	2	0	0	1	100 (16-100)	1	100 (2-100)
The Royal Melbourne Hospital	69	32	36	1	75	47 (35-60)	61	51 (38-64)
University Hospital Geelong Barwon Health	33	15	18	0	28	45 (28-64)	28	54 (34-72)
Western Health Service	66	23	43	0	45	35 (24-48)	51	35 (22-50)
Tasmania	24	11	13	0	43	46 (26-67)	20	50 (27-73)
Launceston General Hospital	14	8	6	0	21	57 (29-82)	11	73 (39-94)

continued on next page

continued from previous page

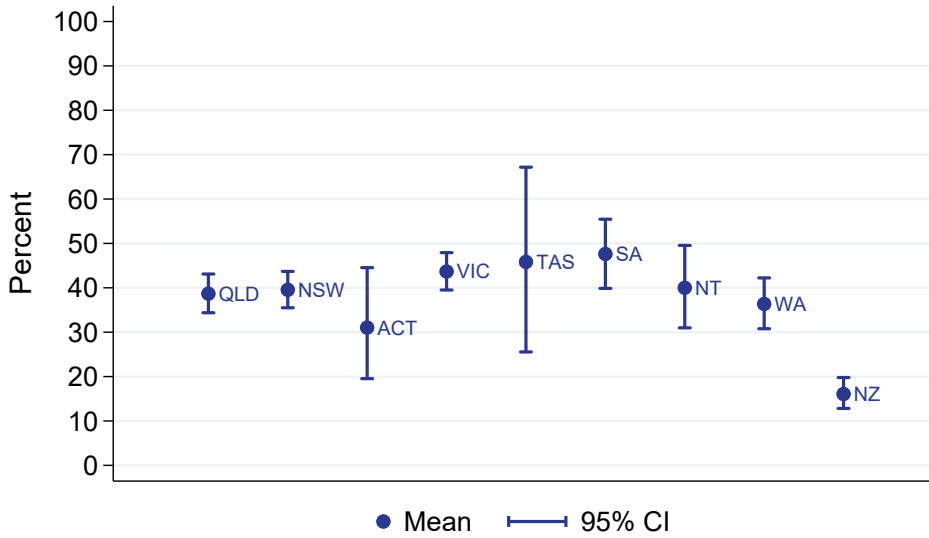
Centre	HD Patients	AVF or AVG	Vascular Catheter	Missing Access Data	2022 HD Patients	% of AVF or AVG (95 % CI)	Early Referral	% of Early Referrals with AVF or AVG
Royal Hobart Hospital	10	3	7	0	22	30 (7-65)	9	22 (3-60)
South Australia	169	80	88	1	159	48 (40-55)	137	58 (49-66)
Central Northern Adelaide Renal Service	125	62	62	1	117	50 (41-59)	104	59 (49-68)
Flinders Medical Centre	44	18	26	0	42	41 (26-57)	33	55 (36-72)
Northern Territory	115	46	69	0	122	40 (31-50)	96	46 (36-56)
Alice Springs Hospital	54	15	39	0	57	28 (16-42)	44	32 (19-48)
Royal Darwin Hospital	61	31	30	0	65	51 (38-64)	52	58 (43-71)
Western Australia	288	104	182	2	278	36 (31-42)	192	45 (38-52)
Fiona Stanley Hospital	106	35	71	0	113	33 (24-43)	45	44 (30-60)
Royal Perth Hospital	108	41	66	1	99	38 (29-48)	94	43 (32-53)
Sir Charles Gairdner Hospital	74	28	45	1	66	38 (27-50)	53	49 (35-63)
New Zealand	455	73	381	1	390	16 (13-20)	371	19 (15-24)
Auckland City Hospital	59	10	49	0	51	17 (8-29)	55	18 (9-31)
Christchurch Hospital	35	5	30	0	19	14 (5-30)	27	19 (6-38)
Dunedin Hospital	6	2	4	0	11	33 (4-78)	5	40 (5-85)
Hawkes Bay Hospital	13	5	8	0	8	38 (14-68)	12	42 (15-72)
Middlemore Hospital	109	25	84	0	110	23 (15-32)	95	26 (18-36)
Palmerston North Hospital	22	1	21	0	16	5 (0-23)	12	0 (0-26)
Taranaki Hospital	7	3	4	0	4	43 (10-82)	7	43 (10-82)
Waikato Hospital	98	5	92	1	63	5 (2-12)	76	7 (2-15)
Waitemata Renal Service	57	5	52	0	49	9 (3-19)	44	9 (3-22)
Wellington Regional Hospital	31	8	23	0	39	26 (12-45)	23	35 (16-57)
Whangarei Hospital	18	4	14	0	20	22 (6-48)	15	27 (8-55)

HD vascular access planning (AVF/AVG at first HD)
 % of all HD patients at day 90, Adults
 01 January 2023 - 31 December 2023



All HD patients at day 90 including those late referred

HD vascular access planning (AVF/AVG at first HD)
 % of all HD patients at day 90, Adults
 By Jurisdiction, 2023



2.3.2 Paediatric

This table presents the numbers of patients on haemodialysis at day 90 and the percentage starting haemodialysis with a permanent vascular access (an AVF or AVG) during the observation window by Centre. Modality changes of less than 30 days are ignored for the determination of modality at day 90. Patients are included in this paediatric report if they were treated at a paediatric hospital. In rare cases when patients younger than 18 years are treated at an adult centre, they are included in the adult report. Any patients 18 years and older treated at a paediatric hospital are included in this report. The number of HD patients at day 90 for 2022 is also provided to allow assessment of possible under-reporting. Finally, the total of Early Referrals (patients seen more than 3 months before first treatment) and the percentage of Early Referrals with a permanent access are also presented.

Centre	HD Patients	AVF or AVG	Vascular Catheter	Missing Access Data	2022 HD Patients	% of AVF or AVG (95 % CI)	Early Referral	% of Early Referrals with AVF or AVG
Australia	3	1	2	0	5	33 (1-91)	0	–
New South Wales	1	1	0	0	1	100 (2-100)	0	–
The Children's Hospital at Westmead	1	1	0	0	1	100 (2-100)	0	–
Victoria	1	0	1	0	2	0 (0-98)	0	–
Royal Children's Hospital	1	0	1	0	2	0 (0-98)	0	–
Western Australia	1	0	1	0	0	0 (0-98)	0	–
Perth Children's Hospital	1	0	1	0	0	0 (0-98)	0	–

2.4 PD Catheter Planning

2.4.1 Adult

This table presents the numbers of patients on peritoneal dialysis at day 90 and the percentage starting kidney replacement therapy (KRT) with peritoneal dialysis during the observation window by Centre. Modality changes of less than 30 days are ignored for the determination of modality at day 90. Patients are excluded from this adult report if they were treated at a paediatric hospital. In rare cases when patients younger than 18 years are treated at an adult centre, they are included in this adult report. Any patients 18 years and older treated at a paediatric hospital are excluded from this report. The number of PD patients at day 90 for 2022 is also provided to allow assessment of possible under-reporting. Finally, the total of Early Referrals (patients seen more than 3 months before first treatment) and the percentage of Early Referrals starting with PD are also presented.

Centre	90-day PD Patients	Started KRT with PD	Did not start KRT with PD	2022 90-day PD Patients	% starting with PD (95 % CI)	Early Referral	% of Early Referrals starting with PD
Australia	877	790	87	846	90 (88-92)	791	93 (90-94)
Queensland	147	131	16	145	89 (83-94)	132	92 (87-96)
Bundaberg Hospital	4	4	0	2	100 (40-100)	4	100 (40-100)
Cairns Hospital	13	10	3	15	77 (46-95)	9	89 (52-100)
Gold Coast University Hospital	15	10	5	12	67 (38-88)	12	83 (52-98)
Hervey Bay Hospital	6	5	1	4	83 (36-100)	6	83 (36-100)
Ipswich Hospital	10	10	0	0	100 (69-100)	8	100 (63-100)
Mackay Base Hospital	5	5	0	1	100 (48-100)	5	100 (48-100)
Princess Alexandra Hospital	43	42	1	46	98 (88-100)	39	97 (87-100)
Rockhampton Hospital	2	2	0	2	100 (16-100)	2	100 (16-100)
Royal Brisbane and Women's Hospital	16	14	2	30	88 (62-98)	15	93 (68-100)
Sunshine Coast University Hospital	4	3	1	4	75 (19-99)	4	75 (19-99)
Toowoomba Hospital	15	15	0	17	100 (78-100)	15	100 (78-100)
Townsville University Hospital	14	11	3	12	79 (49-95)	13	77 (46-95)
New South Wales	303	275	28	299	91 (87-94)	274	93 (89-96)
Coffs Harbour Hospital	1	1	0	0	100 (2-100)	1	100 (2-100)
Concord Repatriation General Hospital	9	9	0	9	100 (66-100)	8	100 (63-100)
Dubbo Base Hospital	3	2	1	1	67 (9-99)	3	67 (9-99)
Gosford Hospital	8	3	5	6	38 (9-76)	5	60 (15-95)
John Hunter Hospital	17	17	0	17	100 (80-100)	16	100 (79-100)
Lismore Base Hospital	5	5	0	7	100 (48-100)	4	100 (40-100)

continued on next page

continued from previous page

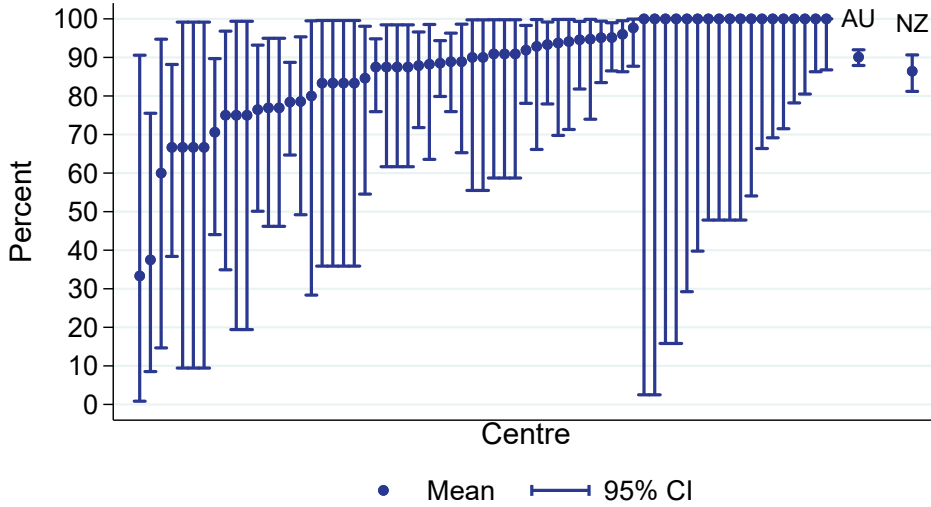
Centre	90-day PD Patients	Started KRT with PD	Did not start KRT with PD	2022 90-day PD Patients	% starting with PD (95 % CI)	Early Referral	% of Early Referrals starting with PD
Manning Rural Hospital	3	2	1	3	67 (9-99)	2	100 (16-100)
Nepean Hospital	11	11	0	21	100 (72-100)	10	100 (69-100)
Orange Health Service	3	3	0	3	100 (29-100)	3	100 (29-100)
Port Macquarie Base Hospital	1	1	0	4	100 (2-100)	1	100 (2-100)
Royal North Shore Hospital	25	25	0	18	100 (86-100)	20	100 (83-100)
Royal Prince Alfred Hospital	14	13	1	11	93 (66-100)	14	93 (66-100)
South West Sydney Renal Service	62	59	3	61	95 (87-99)	59	95 (86-99)
St George Hospital	16	15	1	14	94 (70-100)	13	92 (64-100)
St Vincent's Hospital Sydney	6	5	1	3	83 (36-100)	6	83 (36-100)
Tamworth Hospital	6	5	1	7	83 (36-100)	6	83 (36-100)
The Prince of Wales Hospital	3	1	2	7	33 (1-91)	3	33 (1-91)
The Tweed Hospital	5	5	0	1	100 (48-100)	4	100 (40-100)
Wagga Wagga Base Hospital	2	2	0	6	100 (16-100)	2	100 (16-100)
Westmead Hospital	87	77	10	81	89 (80-94)	79	92 (84-97)
Wollongong Hospital	16	14	2	19	88 (62-98)	15	93 (68-100)
Australian Capital Territory	8	6	2	13	75 (35-97)	6	100 (54-100)
Canberra Hospital	8	6	2	13	75 (35-97)	6	100 (54-100)
Victoria	233	209	24	193	90 (85-93)	207	93 (88-96)
Alfred Hospital	17	15	2	27	88 (64-99)	13	92 (64-100)
Austin Hospital	13	11	2	9	85 (55-98)	12	92 (62-100)
Bendigo Hospital	6	6	0	9	100 (54-100)	4	100 (40-100)
Eastern Health Integrated Renal Services	17	16	1	7	94 (71-100)	16	94 (70-100)
Monash Medical Centre	56	49	7	39	88 (76-95)	51	90 (79-97)
Northern Health Service Melbourne	11	10	1	11	91 (59-100)	10	90 (55-100)
St Vincent's Hospital Melbourne	26	26	0	21	100 (87-100)	25	100 (86-100)
The Royal Melbourne Hospital	37	34	3	45	92 (78-98)	32	97 (84-100)
University Hospital Geelong Barwon Health	17	13	4	1	76 (50-93)	12	83 (52-98)
Western Health Service	33	29	4	24	88 (72-97)	32	91 (75-98)
Tasmania	15	12	3	24	80 (52-96)	14	79 (49-95)

continued on next page

continued from previous page

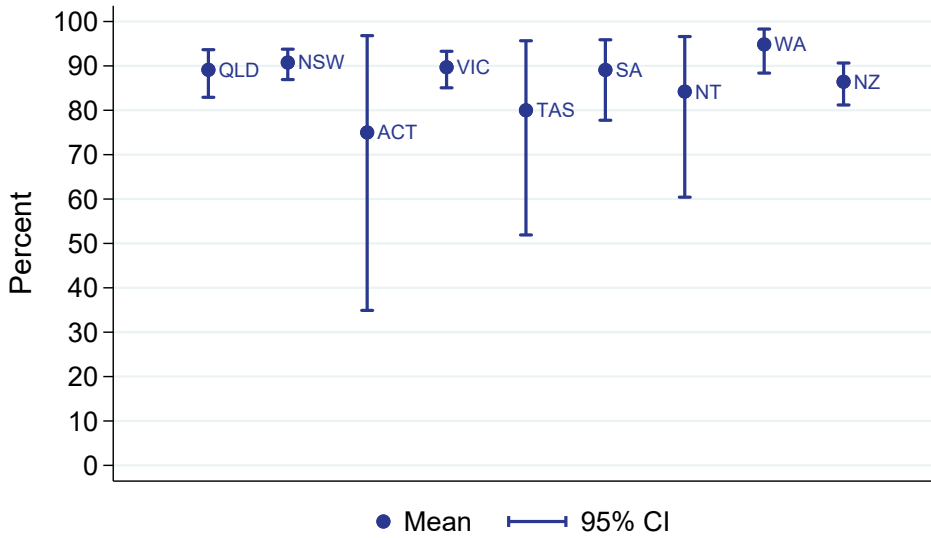
Centre	90-day PD Patients	Started KRT with PD	Did not start KRT with PD	2022 90-day PD Patients	% starting with PD (95 % CI)	Early Referral	% of Early Referrals starting with PD
Launceston General Hospital	10	9	1	18	90 (55-100)	10	90 (55-100)
Royal Hobart Hospital	5	3	2	6	60 (15-95)	4	50 (7-93)
South Australia	55	49	6	68	89 (78-96)	52	88 (77-96)
Central Northern Adelaide Renal Service	45	40	5	56	89 (76-96)	43	88 (75-96)
Flinders Medical Centre	10	9	1	12	90 (55-100)	9	89 (52-100)
Northern Territory	19	16	3	15	84 (60-97)	15	80 (52-96)
Alice Springs Hospital	3	2	1	2	67 (9-99)	3	67 (9-99)
Royal Darwin Hospital	16	14	2	13	88 (62-98)	12	83 (52-98)
Western Australia	97	92	5	89	95 (88-98)	91	97 (91-99)
Fiona Stanley Hospital	37	35	2	28	95 (82-99)	37	95 (82-99)
Royal Perth Hospital	19	18	1	30	95 (74-100)	18	100 (81-100)
Sir Charles Gairdner Hospital	41	39	2	31	95 (83-99)	36	97 (85-100)
New Zealand	221	191	30	267	86 (81-91)	203	88 (83-92)
Auckland City Hospital	11	10	1	15	91 (59-100)	10	90 (55-100)
Bay of Plenty Renal Unit	5	4	1	0	80 (28-99)	5	80 (28-99)
Christchurch Hospital	18	16	2	25	89 (65-99)	17	88 (64-99)
Dunedin Hospital	17	12	5	15	71 (44-90)	16	75 (48-93)
Hawkes Bay Hospital	13	10	3	7	77 (46-95)	12	83 (52-98)
Middlemore Hospital	51	40	11	51	78 (65-89)	41	83 (68-93)
Palmerston North Hospital	6	5	1	10	83 (36-100)	6	83 (36-100)
Taranaki Hospital	5	5	0	7	100 (48-100)	5	100 (48-100)
Waikato Hospital	50	48	2	67	96 (86-100)	49	96 (86-100)
Waitemata Renal Service	11	10	1	16	91 (59-100)	11	91 (59-100)
Wellington Regional Hospital	30	28	2	43	93 (78-99)	29	93 (77-99)
Whangarei Hospital	4	3	1	11	75 (19-99)	2	50 (1-99)

PD catheter planning (PD at start)
 % of all PD patients at day 90, Adults
 01 January 2023 - 31 December 2023



All PD patients at day 90 including those late referred

PD catheter planning (PD at start)
 % of all PD patients at day 90, Adults
 By Jurisdiction, 2023



2.4.2 Paediatric

This table presents the numbers of patients on peritoneal dialysis at day 90 and the percentage starting kidney replacement therapy (KRT) with peritoneal dialysis during the observation window by Centre. Modality changes of less than 30 days are ignored for the determination of modality at day 90. Patients are included in this paediatric report if they were treated at a paediatric hospital. In rare cases when patients younger than 18 years are treated at an adult centre, they are included in the adult report. Any patients 18 years and older treated at a paediatric hospital are included in this report. The number of HD patients at day 90 for 2022 is also provided to allow assessment of possible under-reporting. Finally, the total of Early Referrals (patients seen more than 3 months before first treatment) and the percentage of Early Referrals starting with PD are also presented.

Centre	90-day PD Patients	Started KRT with PD	Did not start KRT with PD	2022 90-day PD Patients	% starting with PD (95 % CI)	Early Referral	% of Early Referrals starting with PD
Australia	19	17	2	28	89 (67-99)	13	100 (75-100)
Queensland Child and Adolescent Renal Service	7 7	5 5	2 2	7 7	71 (29-96) 71 (29-96)	5 5	100 (48-100) 100 (48-100)
New South Wales Sydney Children's Hospital	1 1	1 1	0 0	9 5	100 (2-100) 100 (2-100)	1 1	100 (2-100) 100 (2-100)
Victoria Monash Children's Centre Royal Children's Hospital	6 2 4	6 2 4	0 0 0	10 5 5	100 (54-100) 100 (16-100) 100 (40-100)	3 0 3	100 (29-100) – 100 (29-100)
South Australia Women's and Children's Hospital	2 2	2 2	0 0	0 0	100 (16-100) 100 (16-100)	1 1	100 (2-100) 100 (2-100)
Western Australia Perth Children's Hospital	3 3	3 3	0 0	2 2	100 (29-100) 100 (29-100)	3 3	100 (29-100) 100 (29-100)
New Zealand Starship Children's Hospital	2 2	2 2	0 0	7 7	100 (16-100) 100 (16-100)	1 1	100 (2-100) 100 (2-100)

3 Transplantation Wait Listing

3.1 Adult

This table presents the numbers of patients aged <65 years who have received kidney replacement therapy (KRT) for 6 months, and the percentage who are transplanted or on the wait list within 6 months of KRT start during the observation window by Centre. The 6 month follow-up time means these patients commenced KRT between Jul 2022 and Jun 2023. The number of patients aged <65 years commencing KRT between Jul 2021 and Jun 2022 is also provided to allow assessment of possible under-reporting. Patients are excluded from this adult report if they were treated at a paediatric hospital. In rare cases when patients younger than 18 years are treated at an adult centre, they are included in this adult report. Any patients 18 years and older treated at a paediatric hospital are excluded from this report. This quality indicator is presented for Australia only as New Zealand transplant wait listing data is not currently available to ANZDATA.

Centre	Patients	Transplanted or on wait list within 6 months	Neither transplanted nor on wait list	Jul 2021-Jun 2022 Patients	% transplanted or on wait list within 6 months (95 % CI)
Australia	1835	284	1551	1720	15 (14-17)
Queensland	387	40	347	350	10 (7-14)
Bundaberg Hospital	8	1	7	7	12 (0-53)
Cairns Hospital	47	1	46	38	2 (0-11)
Chermside Dialysis Centre	2	0	2	6	0 (0-84)
Gold Coast Private Hospital	1	0	1	2	0 (0-98)
Gold Coast University Hospital	29	2	27	27	7 (1-23)
Henry Dalziel Dialysis Clinic - Greenslopes	11	0	11	7	0 (0-28)
Hervey Bay Hospital	13	2	11	5	15 (2-45)
Ipswich Hospital	20	1	19	12	5 (0-25)
John Flynn Private Hospital	5	3	2	2	60 (15-95)
Mackay Base Hospital	14	0	14	8	0 (0-23)
Mater Hospital, Brisbane	11	1	10	9	9 (0-41)
Mater Hospital, Townsville	1	0	1	1	0 (0-98)
North Lakes Dialysis Centre	1	0	1	3	0 (0-98)
Pindara Renal Unit	3	0	3	3	0 (0-71)
Princess Alexandra Hospital	62	12	50	83	19 (10-31)
Queensland Kidney Transplant Service	1	1	0	0	100 (2-100)
Rockhampton Hospital	5	1	4	10	20 (1-72)
Royal Brisbane and Women's Hospital	49	4	45	50	8 (2-20)

continued on next page

continued from previous page

Centre	Patients	Transplanted or on wait list within 6 months	Neither transplanted nor on wait list	Jul 2021-Jun 2022 Patients	% transplanted or on wait list within 6 months (95 % CI)
St Andrew's Ipswich Private Hospital	3	0	3	3	0 (0-71)
St Andrew's Toowoomba B.Braun's Dialysis Clinic	1	0	1	0	0 (0-98)
Sunshine Coast University Hospital	23	8	15	17	35 (16-57)
The Wesley Hospital Brisbane	6	0	6	2	0 (0-46)
Toowoomba Hospital	22	2	20	16	9 (1-29)
Torres & Cape Kidney Health	1	0	1	0	0 (0-98)
Townsville University Hospital	48	1	47	37	2 (0-11)
New South Wales	502	85	417	478	17 (14-21)
Bathurst Base Hospital	5	1	4	5	20 (1-72)
Coffs Harbour Hospital	5	3	2	4	60 (15-95)
Concord Repatriation General Hospital	11	3	8	15	27 (6-61)
Dubbo Base Hospital	9	1	8	7	11 (0-48)
Gosford Hospital	17	1	16	22	6 (0-29)
Gregory Hills B.Braun Renal Care Centre	2	0	2	2	0 (0-84)
John Hunter Hospital	29	5	24	41	17 (6-36)
Lismore Base Hospital	11	4	7	14	36 (11-69)
Mater Hospital, North Sydney	1	0	1	1	0 (0-98)
Nepean Hospital	21	1	20	23	5 (0-24)
Newcastle Dialysis Centre	1	0	1	1	0 (0-98)
Orange Health Service	5	0	5	6	0 (0-52)
Port Macquarie Base Hospital	6	0	6	8	0 (0-46)
Royal North Shore Hospital	46	15	31	40	33 (20-48)
Royal Prince Alfred Hospital	35	15	20	23	43 (26-61)
South West Sydney Renal Service	89	6	83	76	7 (3-14)
St George Hospital	29	8	21	13	28 (13-47)
St Vincent's Hospital Sydney	15	3	12	19	20 (4-48)
Sydney Adventist Hospital	2	0	2	1	0 (0-84)
Tamworth Hospital	8	0	8	12	0 (0-37)
The Prince of Wales Hospital	12	5	7	16	42 (15-72)
The Tweed Hospital	4	0	4	7	0 (0-60)
Wagga Wagga Base Hospital	18	1	17	9	6 (0-27)

continued on next page

continued from previous page

Centre	Patients	Transplanted or on wait list within 6 months	Neither transplanted nor on wait list	Jul 2021-Jun 2022 Patients	% transplanted or on wait list within 6 months (95 % CI)
Westmead Hospital	104	11	93	83	11 (5-18)
Wollongong Hospital	17	2	15	22	12 (1-36)
Australian Capital Territory	27	5	22	26	19 (6-38)
Access Nephrology	2	1	1	0	50 (1-99)
Canberra Hospital	25	4	21	26	16 (5-36)
Victoria	424	99	325	368	23 (19-28)
Alfred Hospital	38	5	33	36	13 (4-28)
Austin Hospital	35	11	24	35	31 (17-49)
Bendigo Hospital	12	0	12	14	0 (0-26)
Eastern Health Integrated Renal Services	19	4	15	16	21 (6-46)
Epworth Eastern Hospital	3	2	1	2	67 (9-99)
Epworth Richmond Hospital	1	0	1	3	0 (0-98)
Forest Hill Dialysis Centre	1	0	1	0	0 (0-98)
Malvern Dialysis Centre	4	1	3	2	25 (1-81)
Monash Medical Centre	111	31	80	77	28 (20-37)
North Melbourne B.Braun Renal Care Centre	1	0	1	0	0 (0-98)
Northern Health Service Melbourne	24	1	23	25	4 (0-21)
St Vincent's Hospital Melbourne	36	7	29	30	19 (8-36)
Sunshine Private Dialysis Centre Fresenius	1	1	0	0	100 (2-100)
The Royal Melbourne Hospital	69	28	41	60	41 (29-53)
University Hospital Geelong Barwon Health	16	6	10	23	38 (15-65)
Western Health Service	53	2	51	43	4 (0-13)
Tasmania	29	8	21	40	28 (13-47)
Launceston General Hospital	18	5	13	21	28 (10-53)
Royal Hobart Hospital	11	3	8	19	27 (6-61)
South Australia	123	24	99	137	20 (13-28)
Central Northern Adelaide Renal Service	92	19	73	107	21 (13-30)
Flinders Medical Centre	31	5	26	30	16 (5-34)

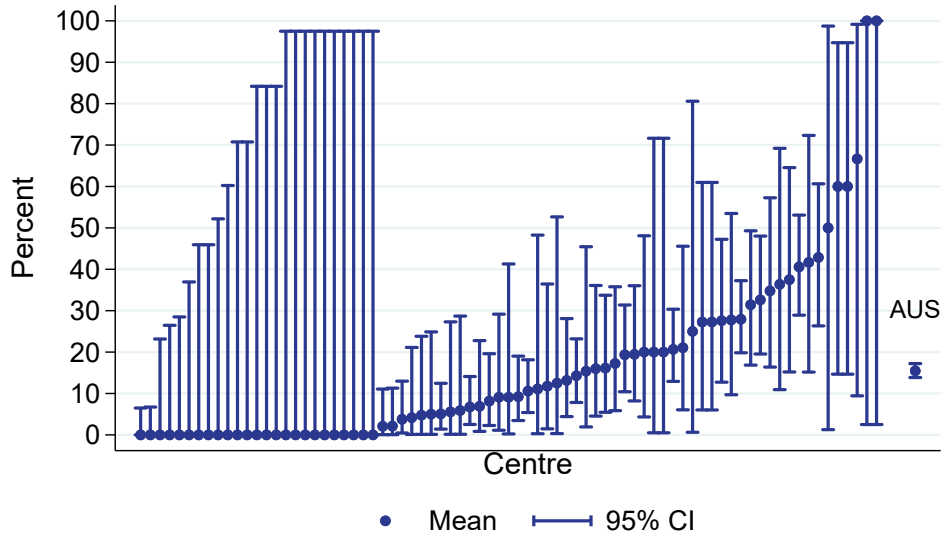
continued on next page

continued from previous page

Centre	Patients	Transplanted or on wait list within 6 months	Neither transplanted nor on wait list	Jul 2021-Jun 2022 Patients	% transplanted or on wait list within 6 months (95 % CI)
Northern Territory	108	0	108	120	0 (0-3)
Alice Springs Hospital	53	0	53	54	0 (0-7)
Royal Darwin Hospital	55	0	55	66	0 (0-6)
Western Australia	235	23	212	201	10 (6-14)
Fiona Stanley Hospital	91	13	78	79	14 (8-23)
Royal Perth Hospital	79	4	75	73	5 (1-12)
Sir Charles Gairdner Hospital	65	6	59	49	9 (3-19)

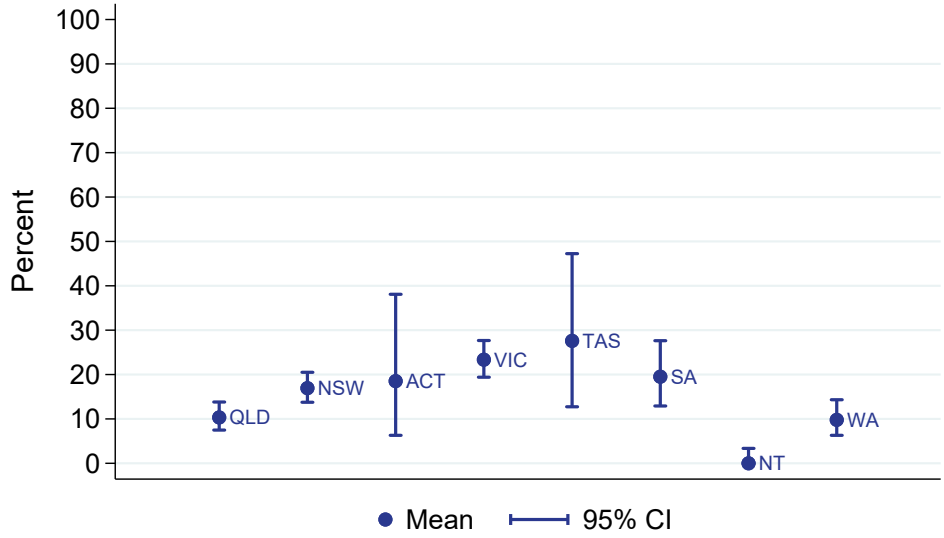
Transplantation wait listing (had a tx or on wl within 6 months)
 % of all new adult patients aged <65 years

Jul 2022 - Jun 2023



Transplantation wait listing (had a tx or on wl within 6 months)
 % of all new adult patients aged <65 years

By Jurisdiction, Jul 2022 - Jun 2023



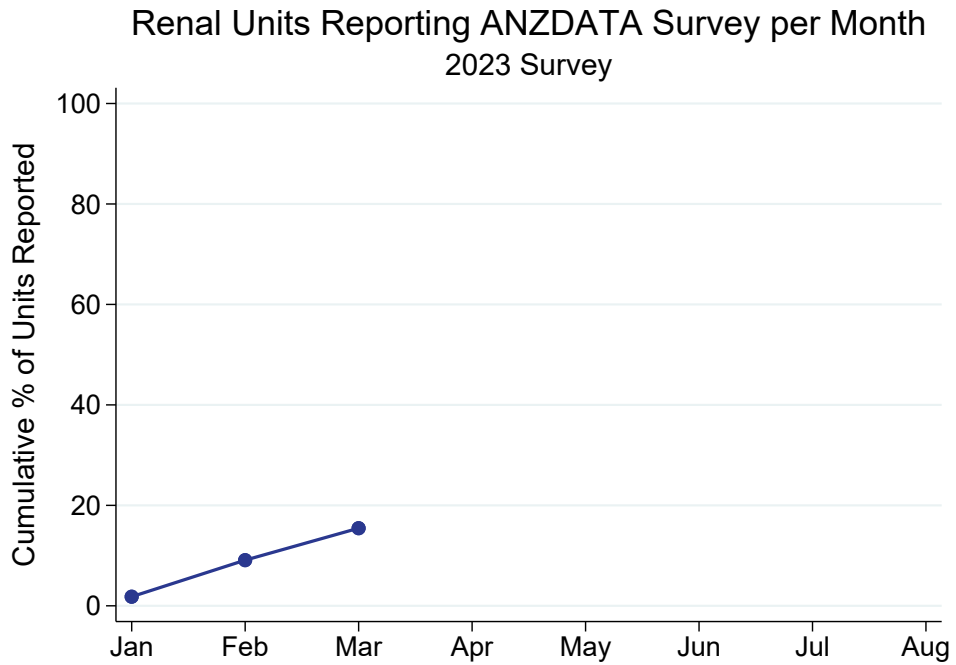
3.2 Paediatric

This table presents the numbers of patients aged ≥ 2 years who have received kidney replacement therapy (KRT) for 6 months, and the percentage who are transplanted or on the wait list within 6 months of KRT start during the observation window by Centre. The 6 month follow-up time means these patients commenced KRT between Jul 2022 and Jun 2023. The number of patients aged < 65 years commencing KRT between Jul 2021 and Jun 2022 is also provided to allow assessment of possible under-reporting. Patients are included in this paediatric report if they were treated at a paediatric hospital. In rare cases when patients younger than 18 years are treated at an adult centre, they are included in the adult report. Any patients 18 years and older treated at a paediatric hospital are included in this report. This quality indicator is presented for Australia only as New Zealand transplant wait listing data is not currently available to ANZDATA.

Centre	Patients	Transplanted or on wait list within 6 months	Neither transplanted nor on wait list	Jul 2021-Jun 2022 Patients	% transplanted or on wait list within 6 months (95 % CI)
Australia	31	10	21	39	32 (17-51)
Queensland	6	1	5	10	17 (0-64)
Child and Adolescent Renal Service	6	1	5	10	17 (0-64)
New South Wales	8	4	4	12	50 (16-84)
Sydney Children's Hospital	3	1	2	3	33 (1-91)
The Children's Hospital at Westmead	5	3	2	9	60 (15-95)
Victoria	10	4	6	13	40 (12-74)
Monash Children's Centre	6	3	3	4	50 (12-88)
Royal Children's Hospital	4	1	3	9	25 (1-81)
South Australia	2	0	2	1	0 (0-84)
Women's and Children's Hospital	2	0	2	1	0 (0-84)
Western Australia	5	1	4	3	20 (1-72)
Perth Children's Hospital	5	1	4	3	20 (1-72)

4 ANZDATA annual data survey timeliness

This figure shows the cumulative percentage of renal units that returned their annual ANZDATA survey each month following 31 December 2023. The date of survey return is the date ANZDATA received notification that annual data submission and data validations have been addressed for data lock. This survey return date identifies a Renal Unit is complete for quality indicator reporting.



This table presents the month of annual ANZDATA survey return by each renal unit following 31 December 2023.

Centre	Month of return
Queensland	
Bundaberg Hospital	Jan
Cairns Hospital	
Cairns Private Hospital	Feb
Chermside Dialysis Centre	
Child and Adolescent Renal Service	
Gold Coast Private Hospital	
Gold Coast University Hospital	
Henry Dalziel Dialysis Clinic - Greenslopes	
Hervey Bay Hospital	
Ipswich Hospital	
John Flynn Private Hospital	
Mackay Base Hospital	Feb
Mater Hospital, Brisbane	Feb
Mater Hospital, Townsville	
Morayfield B.Braun Renal Care Centre	
Mount Isa Base Hospital	
Nambour Selangor Private Hospital	
North Lakes Dialysis Centre	
Pindara Renal Unit	
Princess Alexandra Hospital	
Queensland Kidney Transplant Service	
Rockhampton Hospital	
Royal Brisbane and Women's Hospital	
St Andrew's Ipswich Private Hospital	
St Andrew's Toowoomba B.Braun's Dialysis Clinic	Feb
Sunshine Coast University Hospital	
Sunshine Coast University Private Hospital	
The Wesley Hospital Brisbane	
Toowoomba Hospital	Feb
Torres & Cape Kidney Health	
Townsville University Hospital	
New South Wales	
Bathurst Base Hospital	
Coffs Harbour Hospital	
Concord Repatriation General Hospital	
Dubbo Base Hospital	
Gosford Hospital	
Gregory Hills B.Braun Renal Care Centre	
John Hunter Hospital	
Lismore Base Hospital	
Liverpool Private Dialysis Centre	
Manning Rural Hospital	
Mater Hospital, North Sydney	
Mayo Private Hospital	
Nepean Hospital	
Newcastle Dialysis Centre	Mar
Orange Health Service	
Port Macquarie Base Hospital	

continued on next page

continued from previous page

Centre	Month of return
Port Macquarie Private Hospital	Feb
Royal North Shore Hospital	
Royal Prince Alfred Hospital	
South West Sydney Renal Service	
St George Hospital	Mar
St Vincent's Hospital Sydney	
St Vincent's Lismore Private Dialysis Centre	Feb
Sydney Adventist Hospital	
Sydney Children's Hospital	Mar
Tamworth Hospital	
The Children's Hospital at Westmead	
The Prince of Wales Hospital	
The Tweed Hospital	
Wagga Wagga Base Hospital	
Westmead Hospital	
Wollongong Hospital	
Australian Capital Territory	
Access Nephrology	
Canberra Hospital	
Victoria	
Alfred Hospital	
Austin Hospital	
Bendigo Hospital	
Diamond Valley B.Braun Renal Care Centre	
Eastern Health Integrated Renal Services	
Epworth Eastern Hospital	Feb
Epworth Geelong Hospital	
Epworth Richmond Hospital	Mar
Forest Hill Dialysis Centre	
Malvern Dialysis Centre	Mar
Monash Children's Centre	Mar
Monash Medical Centre	
North Melbourne B.Braun Renal Care Centre	
Northern Health Service Melbourne	
Royal Children's Hospital	
South Eastern Private Hospital Dialysis Centre	
St Vincent's Hospital Melbourne	
Sunshine Private Dialysis Centre Fresenius	
The Royal Melbourne Hospital	
University Hospital Geelong Barwon Health	
Western Health Service	
Tasmania	
Launceston General Hospital	
Royal Hobart Hospital	
South Australia	
Central Northern Adelaide Renal Service	
Flinders Medical Centre	Mar
Women's and Children's Hospital	

continued on next page

continued from previous page

Centre	Month of return
<p>Northern Territory Alice Springs Hospital Royal Darwin Hospital</p> <p>Western Australia Fiona Stanley Hospital Perth Children’s Hospital Royal Perth Hospital Sir Charles Gairdner Hospital</p> <p>New Zealand Auckland City Hospital Bay of Plenty Renal Unit Christchurch Hospital Dunedin Hospital Hawkes Bay Hospital Middlemore Hospital Palmerston North Hospital Starship Children’s Hospital Taranaki Hospital Waikato Hospital Waitemata Renal Service Wellington Regional Hospital Whangarei Hospital</p>	<p>Jan</p>

5 Kidney Replacement Therapy (KRT) Modality

5.1 Incident Modality

5.1.1 Adult

This table presents the numbers (N) of incident kidney replacement therapy (KRT) patients during the observation window by modality at commencement and centre. Modality is categorised as pre-emptive kidney transplant (TX), peritoneal dialysis (PD), home haemodialysis (including commencing training) and community house haemodialysis (HHD*) and facility haemodialysis (FacHD). Also presented are the percentages (%) of each modality out of the total incident KRT cohort. The number of incident patients for 2022 from the analysis database is also provided to allow assessment of possible under-reporting. Patients are excluded from this adult report if they were treated at a paediatric hospital. In rare cases when patients younger than 18 years are treated at an adult centre, they are included in this adult report. Any patients 18 years and older treated at a paediatric hospital are excluded from this report.

Centre	N KRT	N TX	% TX	N PD	% PD	N HHD*	% HHD*	N FacHD	% FacHD	2022 N KRT
Australia	3303	91	3	846	26	49	1	2317	70	3359
Queensland	700	13	2	151	22	9	1	527	75	643
Bundaberg Hospital	12	0	0	4	33	0	0	8	67	15
Cairns Hospital	61	0	0	7	11	2	3	52	85	69
Cairns Private Hospital	2	0	0	0	0	0	0	2	100	0
Chermside Dialysis Centre	15	1	7	0	0	0	0	14	93	12
Gold Coast Private Hospital	10	0	0	0	0	0	0	10	100	19
Gold Coast University Hospital	44	0	0	13	30	1	2	30	68	48
Henry Dalziel Dialysis Clinic - Greenslopes	37	0	0	0	0	0	0	37	100	22
Hervey Bay Hospital	18	0	0	6	33	0	0	12	67	18
Ipswich Hospital	42	0	0	10	24	0	0	32	76	20
John Flynn Private Hospital	12	2	17	0	0	0	0	10	83	11
Mackay Base Hospital	25	0	0	8	32	0	0	17	68	25
Mater Hospital, Brisbane	12	1	8	0	0	0	0	11	92	17
Mater Hospital, Townsville	13	0	0	0	0	0	0	13	100	6
North Lakes Dialysis Centre	7	0	0	0	0	0	0	7	100	9
Pindara Renal Unit	5	0	0	0	0	0	0	5	100	6
Princess Alexandra Hospital	120	6	5	50	42	5	4	59	49	100
Queensland Kidney Transplant Service	1	1	100	0	0	0	0	0	0	1
Rockhampton Hospital	12	0	0	1	8	0	0	11	92	14
Royal Brisbane and Women's Hospital	58	2	3	16	28	1	2	39	67	72
St Andrew's Ipswich Private Hospital	13	0	0	0	0	0	0	13	100	6

continued on next page

continued from previous page

Centre	N KRT	N TX	% TX	N PD	% PD	N HHD*	% HHD*	N FacHD	% FacHD	2022 N KRT
St Andrew's Toowoomba B.Braun's Dialysis Clinic	3	0	0	0	0	0	0	3	100	6
Sunshine Coast University Hospital	46	0	0	5	11	0	0	41	89	36
Sunshine Coast University Private Hospital	4	0	0	0	0	0	0	4	100	3
The Wesley Hospital Brisbane	45	0	0	0	0	0	0	45	100	14
Toowoomba Hospital	38	0	0	20	53	0	0	18	47	30
Torres & Cape Kidney Health	2	0	0	0	0	0	0	2	100	0
Townsville University Hospital	43	0	0	11	26	0	0	32	74	61
New South Wales	873	35	4	276	32	20	2	542	62	1006
Bathurst Base Hospital	3	0	0	0	0	0	0	3	100	7
Coffs Harbour Hospital	6	2	33	1	17	0	0	3	50	16
Concord Repatriation General Hospital	22	1	5	9	41	0	0	12	55	32
Dubbo Base Hospital	16	1	6	3	19	0	0	12	75	10
Gosford Hospital	42	0	0	3	7	0	0	39	93	50
Gregory Hills B.Braun Renal Care Centre	9	0	0	0	0	0	0	9	100	7
John Hunter Hospital	60	3	5	24	40	0	0	33	55	70
Lismore Base Hospital	27	0	0	8	30	0	0	19	70	14
Manning Rural Hospital	9	0	0	2	22	0	0	7	78	8
Mater Hospital, North Sydney	2	0	0	0	0	0	0	2	100	5
Nepean Hospital	35	0	0	9	26	0	0	26	74	49
Newcastle Dialysis Centre	5	0	0	0	0	0	0	5	100	5
Orange Health Service	16	0	0	5	31	0	0	11	69	11
Port Macquarie Base Hospital	16	0	0	1	6	0	0	15	94	16
Royal North Shore Hospital	64	7	11	26	41	3	5	28	44	79
Royal Prince Alfred Hospital	57	10	18	12	21	3	5	32	56	60
South West Sydney Renal Service	105	2	2	54	51	6	6	43	41	164
St George Hospital	42	1	2	13	31	0	0	28	67	56
St Vincent's Hospital Sydney	29	0	0	4	14	0	0	25	86	33
St Vincent's Lismore Private Dialysis Centre	7	0	0	0	0	0	0	7	100	1
Sydney Adventist Hospital	7	0	0	0	0	0	0	7	100	6
Tamworth Hospital	29	0	0	5	17	0	0	24	83	18
The Prince of Wales Hospital	25	3	12	5	20	0	0	17	68	31
The Tweed Hospital	14	0	0	3	21	0	0	11	79	12
Wagga Wagga Base Hospital	31	0	0	2	6	0	0	29	94	25

continued on next page

continued from previous page

Centre	N KRT	N TX	% TX	N PD	% PD	N HHD*	% HHD*	N FacHD	% FacHD	2022 N KRT
Westmead Hospital	158	5	3	75	47	7	4	71	45	174
Wollongong Hospital	37	0	0	12	32	1	3	24	65	41
Australian Capital Territory	61	2	3	8	13	3	5	48	79	80
Access Nephrology	10	1	10	0	0	0	0	9	90	11
Canberra Hospital	51	1	2	8	16	3	6	39	76	69
Victoria	861	24	3	216	25	6	1	615	71	793
Alfred Hospital	71	3	4	13	18	0	0	55	77	67
Austin Hospital	82	7	9	11	13	0	0	64	78	81
Bendigo Hospital	29	0	0	11	38	0	0	18	62	26
Diamond Valley B.Braun Renal Care Centre	2	0	0	0	0	0	0	2	100	5
Eastern Health Integrated Renal Services	54	0	0	15	28	0	0	39	72	44
Epworth Eastern Hospital	11	0	0	0	0	0	0	11	100	5
Epworth Geelong Hospital	2	0	0	0	0	0	0	2	100	0
Epworth Richmond Hospital	10	0	0	0	0	0	0	10	100	4
Forest Hill Dialysis Centre	6	0	0	0	0	0	0	6	100	7
Malvern Dialysis Centre	11	0	0	0	0	0	0	11	100	16
Monash Medical Centre	174	6	3	50	29	3	2	115	66	167
North Melbourne B.Braun Renal Care Centre	2	0	0	0	0	0	0	2	100	2
Northern Health Service Melbourne	53	0	0	13	25	0	0	40	75	55
St Vincent's Hospital Melbourne	71	2	3	29	41	0	0	40	56	73
The Royal Melbourne Hospital	127	6	5	33	26	3	2	85	67	131
University Hospital Geelong Barwon Health	59	0	0	14	24	0	0	45	76	29
Western Health Service	97	0	0	27	28	0	0	70	72	78
Tasmania	48	1	2	16	33	0	0	31	65	67
Launceston General Hospital	28	0	0	11	39	0	0	17	61	44
Royal Hobart Hospital	20	1	5	5	25	0	0	14	70	23
South Australia	244	9	4	61	25	4	2	170	70	240
Central Northern Adelaide Renal Service	189	9	5	52	28	4	2	124	66	189
Flinders Medical Centre	55	0	0	9	16	0	0	46	84	51

continued on next page

continued from previous page

Centre	N KRT	N TX	% TX	N PD	% PD	N HHD*	% HHD*	N FacHD	% FacHD	2022 N KRT
Northern Territory	135	0	0	17	13	0	0	118	87	145
Alice Springs Hospital	57	0	0	2	4	0	0	55	96	65
Royal Darwin Hospital	78	0	0	15	19	0	0	63	81	80
Western Australia	381	7	2	101	27	7	2	266	70	385
Fiona Stanley Hospital	145	2	1	43	30	3	2	97	67	144
Royal Perth Hospital	126	2	2	20	16	2	2	102	81	130
Sir Charles Gairdner Hospital	110	3	3	38	35	2	2	67	61	111
New Zealand	707	25	4	198	28	21	3	463	65	675
Auckland City Hospital	73	1	1	6	8	10	14	56	77	71
Bay of Plenty Renal Unit	5	1	20	4	80	0	0	0	0	0
Christchurch Hospital	54	3	6	16	30	0	0	35	65	47
Dunedin Hospital	21	4	19	11	52	0	0	6	29	30
Hawkes Bay Hospital	28	1	4	11	39	0	0	16	57	18
Middlemore Hospital	179	0	0	49	27	11	6	119	66	151
Palmerston North Hospital	32	0	0	5	16	0	0	27	84	16
Taranaki Hospital	15	1	7	9	60	0	0	5	33	10
Waikato Hospital	151	1	1	43	28	0	0	107	71	133
Waitemata Renal Service	51	6	12	4	8	0	0	41	80	91
Wellington Regional Hospital	70	5	7	35	50	0	0	30	43	84
Whangarei Hospital	28	2	7	5	18	0	0	21	75	24

5.1.2 Paediatric

This table presents the numbers (N) of incident kidney replacement therapy (KRT) patients during the observation window by modality at commencement and centre. Modality is categorised as pre-emptive kidney transplant (TX), peritoneal dialysis (PD), home haemodialysis (including commencing training) and community house haemodialysis (HHD*) and facility haemodialysis (FacHD). Also presented are the percentages (%) of each modality out of the total incident KRT cohort. The number of incident patients for 2022 from the analysis database is also provided to allow assessment of possible under-reporting. Patients are included in this paediatric report if they were treated at a paediatric hospital. In rare cases when patients younger than 18 years are treated at an adult centre, they are included in the adult report. Any patients 18 years and older treated at a paediatric hospital are included in this report.

Centre	N KRT	N TX	% TX	N PD	% PD	N HHD*	% HHD*	N FacHD	% FacHD	2022 N KRT
Australia	33	9	27	18	55	0	0	6	18	44
Queensland	8	2	25	4	50	0	0	2	25	9
Child and Adolescent Renal Service	8	2	25	4	50	0	0	2	25	9
New South Wales	7	4	57	2	29	0	0	1	14	13
Sydney Children's Hospital	2	0	0	2	100	0	0	0	0	5
The Children's Hospital at Westmead	5	4	80	0	0	0	0	1	20	8
Victoria	12	3	25	7	58	0	0	2	17	17
Monash Children's Centre	3	1	33	1	33	0	0	1	33	7
Royal Children's Hospital	9	2	22	6	67	0	0	1	11	10
South Australia	2	0	0	2	100	0	0	0	0	1
Women's and Children's Hospital	2	0	0	2	100	0	0	0	0	1
Western Australia	4	0	0	3	75	0	0	1	25	4
Perth Children's Hospital	4	0	0	3	75	0	0	1	25	4
New Zealand	5	0	0	3	60	0	0	2	40	7
Starship Children's Hospital	5	0	0	3	60	0	0	2	40	7

5.2 Prevalent Modality

5.2.1 Adult

This table presents the numbers (N) of prevalent kidney replacement therapy (KRT) patients at the end of the observation window by modality and centre. Modality is categorised as functioning kidney transplant (TX), peritoneal dialysis (PD), hybrid peritoneal dialysis and haemodialysis (Hybrid), home haemodialysis including community house haemodialysis (HHD*) and facility haemodialysis (FacHD). Also presented are the percentages (%) of each modality out of the total prevalent KRT cohort. The number of prevalent patients for 2022 from the analysis database is also provided to allow assessment of possible under-reporting. Patients are excluded from this adult report if they were treated at a paediatric hospital. In rare cases when patients younger than 18 years are treated at an adult centre, they are included in this adult report. Any patients 18 years and older treated at a paediatric hospital are excluded from this report.

Centre	N KRT	N TX	% TX	N PD	% PD	N Hybrid	% Hybrid	N HHD*	% HHD*	N FacHD	% FacHD	2022 N KRT
Australia	29543	13757	47	2655	9	13	0	1075	4	12043	41	28695
Queensland	5865	2605	44	490	8	1	0	230	4	2539	43	5652
Bundaberg Hospital	140	64	46	13	9	0	0	3	2	60	43	147
Cairns Hospital	471	127	27	39	8	0	0	32	7	273	58	467
Cairns Private Hospital	23	0	0	0	0	0	0	0	0	23	100	23
Chermside Dialysis Centre	68	27	40	0	0	0	0	0	0	41	60	67
Gold Coast Private Hospital	40	0	0	0	0	0	0	0	0	40	100	51
Gold Coast University Hospital	514	264	51	49	10	0	0	27	5	174	34	491
Henry Dalziel Dialysis Clinic - Greenslopes	221	114	52	0	0	0	0	0	0	107	48	156
Hervey Bay Hospital	124	40	32	18	15	0	0	3	2	63	51	126
Ipswich Hospital	126	13	10	19	15	0	0	0	0	94	75	89
John Flynn Private Hospital	111	79	71	0	0	0	0	0	0	32	29	107
Mackay Base Hospital	172	64	37	15	9	0	0	0	0	93	54	166
Mater Hospital, Brisbane	142	63	44	0	0	0	0	0	0	79	56	118
Mater Hospital, Townsville	34	0	0	0	0	0	0	0	0	34	100	32
Morayfield B.Braun Renal Care Centre	8	0	0	0	0	0	0	0	0	8	100	7
Mount Isa Base Hospital	62	10	16	0	0	0	0	0	0	52	84	60
Nambour Selangor Private Hospital	11	0	0	0	0	0	0	0	0	11	100	14
North Lakes Dialysis Centre	39	0	0	0	0	0	0	0	0	39	100	37
Pindara Renal Unit	21	0	0	0	0	0	0	0	0	21	100	22
Princess Alexandra Hospital	544	13	2	155	28	0	0	74	14	302	56	529
Queensland Kidney Transplant Service	793	792	100	1	0	0	0	0	0	0	0	855
Rockhampton Hospital	166	77	46	13	8	0	0	3	2	73	44	167
Royal Brisbane and Women's Hospital	617	224	36	74	12	0	0	43	7	276	45	597

continued on next page

continued from previous page

Centre	N KRT	N TX	% TX	N PD	% PD	N Hybrid	% Hybrid	N HHD*	% HHD*	N FacHD	% FacHD	2022 N KRT
St Andrew's Ipswich Private Hospital	44	4	9	0	0	0	0	0	0	40	91	39
St Andrew's Toowoomba B.Braun's Dialysis Clinic	21	0	0	0	0	0	0	0	0	21	100	22
Sunshine Coast University Hospital	416	241	58	12	3	1	0	14	3	148	36	389
Sunshine Coast University Private Hospital	30	0	0	0	0	0	0	0	0	30	100	28
The Wesley Hospital Brisbane	198	137	69	0	0	0	0	0	0	61	31	179
Toowoomba Hospital	268	117	44	39	15	0	0	19	7	93	35	255
Torres & Cape Kidney Health	62	18	29	0	0	0	0	0	0	44	71	53
Townsville University Hospital	379	117	31	43	11	0	0	12	3	207	55	359
New South Wales	8386	3795	45	1001	12	1	0	422	5	3167	38	8242
Bathurst Base Hospital	36	12	33	0	0	0	0	0	0	24	67	37
Coffs Harbour Hospital	136	71	52	4	3	0	0	3	2	58	43	133
Concord Repatriation General Hospital	280	111	40	32	11	0	0	15	5	122	44	290
Dubbo Base Hospital	137	61	45	9	7	0	0	4	3	63	46	136
Gosford Hospital	313	125	40	22	7	0	0	7	2	159	51	341
Gregory Hills B.Braun Renal Care Centre	39	0	0	0	0	0	0	0	0	39	100	30
John Hunter Hospital	652	378	58	55	8	0	0	31	5	188	29	639
Lismore Base Hospital	193	92	48	19	10	0	0	12	6	70	36	184
Liverpool Private Dialysis Centre	26	0	0	0	0	0	0	0	0	26	100	24
Manning Rural Hospital	77	16	21	11	14	1	1	2	3	47	61	80
Mater Hospital, North Sydney	69	39	57	0	0	0	0	0	0	30	43	71
Mayo Private Hospital	16	0	0	0	0	0	0	0	0	16	100	19
Nepean Hospital	330	133	40	46	14	0	0	4	1	147	45	328
Newcastle Dialysis Centre	43	0	0	0	0	0	0	0	0	43	100	52
Orange Health Service	108	43	40	11	10	0	0	2	2	52	48	101
Port Macquarie Base Hospital	114	42	37	7	6	0	0	2	2	63	55	122
Port Macquarie Private Hospital	10	0	0	0	0	0	0	0	0	10	100	13
Royal North Shore Hospital	700	362	52	63	9	0	0	43	6	232	33	656
Royal Prince Alfred Hospital	664	432	65	37	6	0	0	50	8	145	22	639
South West Sydney Renal Service	1176	432	37	232	20	0	0	76	6	436	37	1167
St George Hospital	491	253	52	33	7	0	0	23	5	182	37	494
St Vincent's Hospital Sydney	231	111	48	20	9	0	0	29	13	71	31	239
St Vincent's Lismore Private Dialysis Centre	18	0	0	0	0	0	0	0	0	18	100	18
Sydney Adventist Hospital	47	0	0	0	0	0	0	0	0	47	100	40

continued on next page

continued from previous page

Centre	N KRT	N TX	% TX	N PD	% PD	N Hybrid	% Hybrid	N HHD*	% HHD*	N FacHD	% FacHD	2022 N KRT
Tamworth Hospital	171	64	37	13	8	0	0	5	3	89	52	156
The Prince of Wales Hospital	286	172	60	26	9	0	0	6	2	82	29	302
The Tweed Hospital	85	14	16	12	14	0	0	0	0	59	69	77
Wagga Wagga Base Hospital	187	53	28	14	7	0	0	8	4	112	60	169
Westmead Hospital	1347	602	45	285	21	0	0	85	6	375	28	1288
Wollongong Hospital	404	177	44	50	12	0	0	15	4	162	40	397
Australian Capital Territory	632	311	49	38	6	1	0	21	3	261	41	633
Access Nephrology	111	85	77	0	0	0	0	0	0	26	23	118
Canberra Hospital	521	226	43	38	7	1	0	21	4	235	45	515
Victoria	7655	3980	52	612	8	4	0	222	3	2837	37	7411
Alfred Hospital	580	293	51	78	13	1	0	6	1	202	35	568
Austin Hospital	744	463	62	32	4	0	0	30	4	219	29	719
Bendigo Hospital	155	31	20	41	26	0	0	0	0	83	54	146
Diamond Valley B.Braun Renal Care Centre	39	0	0	0	0	0	0	0	0	39	100	51
Eastern Health Integrated Renal Services	458	206	45	33	7	0	0	10	2	209	46	443
Epworth Eastern Hospital	49	0	0	0	0	0	0	0	0	49	100	46
Epworth Geelong Hospital	21	0	0	0	0	0	0	0	0	21	100	16
Epworth Richmond Hospital	39	0	0	0	0	0	0	0	0	39	100	40
Forest Hill Dialysis Centre	46	0	0	0	0	0	0	0	0	46	100	61
Malvern Dialysis Centre	64	0	0	0	0	0	0	0	0	64	100	69
Monash Medical Centre	1799	1074	60	123	7	0	0	73	4	529	29	1757
North Melbourne B.Braun Renal Care Centre	25	0	0	0	0	0	0	0	0	25	100	23
Northern Health Service Melbourne	271	58	21	35	13	0	0	8	3	170	63	242
South Eastern Private Hospital Dialysis Centre	22	0	0	0	0	0	0	1	5	21	95	0
St Vincent's Hospital Melbourne	602	286	48	69	11	0	0	9	1	238	40	582
Sunshine Private Dialysis Centre Fresenius	31	0	0	0	0	0	0	0	0	31	100	29
The Royal Melbourne Hospital	1836	1252	68	91	5	0	0	37	2	456	25	1803
University Hospital Geelong Barwon Health	348	182	52	24	7	0	0	27	8	115	33	321
Western Health Service	526	135	26	86	16	3	1	21	4	281	53	495
Tasmania	569	332	58	47	8	0	0	6	1	184	32	555
Launceston General Hospital	307	162	53	33	11	0	0	6	2	106	35	299

continued on next page

continued from previous page

Centre	N KRT	N TX	% TX	N PD	% PD	N Hybrid	% Hybrid	N HHD*	% HHD*	N FacHD	% FacHD	2022 N KRT
Royal Hobart Hospital	262	170	65	14	5	0	0	0	0	78	30	256
South Australia	2256	1171	52	169	7	6	0	33	1	877	39	2179
Central Northern Adelaide Renal Service	1768	921	52	135	8	5	0	32	2	675	38	1688
Flinders Medical Centre	488	250	51	34	7	1	0	1	0	202	41	491
Northern Territory	995	173	17	39	4	0	0	35	4	748	75	967
Alice Springs Hospital	470	60	13	6	1	0	0	4	1	400	85	476
Royal Darwin Hospital	525	113	22	33	6	0	0	31	6	348	66	491
Western Australia	3185	1390	44	259	8	0	0	106	3	1430	45	3056
Fiona Stanley Hospital	1236	576	47	86	7	0	0	40	3	534	43	1172
Royal Perth Hospital	912	287	31	61	7	0	0	34	4	530	58	893
Sir Charles Gairdner Hospital	1037	527	51	112	11	0	0	32	3	366	35	991
New Zealand	5617	2337	42	761	14	5	0	391	7	2123	38	5413
Auckland City Hospital	652	262	40	32	5	0	0	64	10	294	45	661
Bay of Plenty Renal Unit	219	95	43	51	23	0	0	0	0	73	33	0
Christchurch Hospital	506	344	68	69	14	0	0	19	4	74	15	474
Dunedin Hospital	230	141	61	30	13	1	0	36	16	22	10	229
Hawkes Bay Hospital	185	89	48	18	10	0	0	9	5	69	37	177
Middlemore Hospital	1103	284	26	152	14	0	0	86	8	581	53	1022
Palmerston North Hospital	292	106	36	32	11	4	1	21	7	129	44	327
Taranaki Hospital	111	59	53	15	14	0	0	5	5	32	29	107
Waikato Hospital	782	236	30	183	23	0	0	72	9	291	37	891
Waitemata Renal Service	606	274	45	42	7	0	0	39	6	251	41	587
Wellington Regional Hospital	659	332	50	109	17	0	0	25	4	193	29	657
Whangarei Hospital	272	115	42	28	10	0	0	15	6	114	42	281

5.2.2 Paediatric

This table presents the numbers (N) of prevalent kidney replacement therapy (KRT) patients at the end of the observation window by modality and centre. Modality is categorised as functioning kidney transplant (TX), peritoneal dialysis (PD), hybrid peritoneal dialysis and haemodialysis (Hybrid), home haemodialysis including community house haemodialysis (HHD*) and facility haemodialysis (FacHD). Also presented are the percentages (%) of each modality out of the total prevalent KRT cohort. The number of prevalent patients for 2022 from the analysis database is also provided to allow assessment of possible under-reporting. Patients are included in this paediatric report if they were treated at a paediatric hospital. In rare cases when patients younger than 18 years are treated at an adult centre, they are included in the adult report. Any patients 18 years and older treated at a paediatric hospital are included in this report.

Centre	N KRT	N TX	% TX	N PD	% PD	N Hybrid	% Hybrid	N HHD*	% HHD*	N FacHD	% FacHD	2022 N KRT
Australia	329	279	85	41	12	1	0	0	0	8	2	330
Queensland	81	68	84	12	15	0	0	0	0	1	1	81
Child and Adolescent Renal Service	81	68	84	12	15	0	0	0	0	1	1	81
New South Wales	105	99	94	5	5	0	0	0	0	1	1	106
Sydney Children's Hospital	24	20	83	3	12	0	0	0	0	1	4	29
The Children's Hospital at Westmead	81	79	98	2	2	0	0	0	0	0	0	77
Victoria	97	76	78	16	16	1	1	0	0	4	4	98
Monash Children's Centre	26	18	69	4	15	1	4	0	0	3	12	30
Royal Children's Hospital	71	58	82	12	17	0	0	0	0	1	1	68
South Australia	18	15	83	3	17	0	0	0	0	0	0	19
Women's and Children's Hospital	18	15	83	3	17	0	0	0	0	0	0	19
Western Australia	28	21	75	5	18	0	0	0	0	2	7	26
Perth Children's Hospital	28	21	75	5	18	0	0	0	0	2	7	26
New Zealand	58	49	84	7	12	0	0	0	0	2	3	61
Starship Children's Hospital	58	49	84	7	12	0	0	0	0	2	3	61