

Quality Indicators

Annual Report

01 January 2020 - 31 December 2020

Analysis Database

PUBLISHED 24 November 2021 - REVISED 30 January 2024

This information is provided as it is reported to ANZDATA with no express or implied guarantee of accuracy or quality. The reporting arrangements provide additional information to units on quality indicators. Units should use these data to monitor clinical practice and outcomes.

Contents

1	Incidence of Peritonitis in Patients Treated with Peritoneal Dialysis	2
1.1	Adult	2
1.2	Paediatric	7
2	Dialysis Access Planning at Commencement of Dialysis	8
2.1	All Dialysis Access Planning	8
2.1.1	Adult	8
2.1.2	Paediatric	15
2.2	Vascular Access at First Haemodialysis	17
2.2.1	Adult	17
2.2.2	Paediatric	24
2.3	HD Vascular Access Planning	25
2.3.1	Adult	25
2.3.2	Paediatric	32
2.4	PD Catheter Planning	33
2.4.1	Adult	33
2.4.2	Paediatric	39
3	Transplantation Wait Listing	40
3.1	Adult	40
3.2	Paediatric	46
4	ANZDATA annual data survey timeliness	47
5	Kidney Replacement Therapy (KRT) Modality	53
5.1	Incident Modality	53
5.1.1	Adult	53
5.1.2	Paediatric	58
5.2	Prevalent Modality	59
5.2.1	Adult	59
5.2.2	Paediatric	64

1 Incidence of Peritonitis in Patients Treated with Peritoneal Dialysis

1.1 Adult

This table presents the total number of peritonitis episodes and patient exposure in years by Centre. Patient totals, exposure and peritonitis episodes were determined using the hospital at which the patient was receiving treatment at the time. So, if a patient transferred units during the observation period, the subsequent exposure and peritonitis episodes were allocated to the new unit. Months per episode (PM per Episode) is also reported. This should be interpreted as the average number of months between episodes of peritonitis; it can not be calculated if the peritonitis rate is zero. Patients are excluded from this adult report if they were treated at a paediatric hospital. In rare cases when patients younger than 18 years are treated at an adult centre, they are included in this adult report. Any patients 18 years and older treated at a paediatric hospital are excluded from this report. This quality indicator is presented for Australia only as New Zealand peritonitis episode data is not currently available to ANZDATA.

*Due to a revision of analysis data for the period 2020 to 2022, the rate of peritonitis has been updated in this report, superseding previously reported number of episodes and rates of peritonitis.

Centre	PD Patients	*No of Episodes	Person Years	*Rate (95% CI)	*PM per Episode (95% CI)
Australia	3612	686	2461.35	0.28 (0.26-0.30)	43.06 (39.95-46.47)
Queensland	677	150	462.42	0.32 (0.27-0.38)	36.99 (31.53-43.71)
Bundaberg Hospital	17	5	11.04	0.45 (0.15-1.06)	26.49 (11.35-81.57)
Cairns Hospital	63	13	40.31	0.32 (0.17-0.55)	37.21 (21.76-69.88)
Gold Coast University Hospital	68	11	45.77	0.24 (0.12-0.43)	49.93 (27.91-100.03)
Hervey Bay Hospital	7	0	4.41	0.00 (0.00-0.84)	. (14.36-.)
Mackay Base Hospital	24	4	16.93	0.24 (0.06-0.60)	50.80 (19.84-186.45)
Mater Hospital, Brisbane	1	0	0.12	0.00 (0.00-31.33)	. (0.38-.)
Princess Alexandra Hospital	248	56	166.89	0.34 (0.25-0.44)	35.76 (27.54-47.34)
Rockhampton Hospital	19	1	16.26	0.06 (0.00-0.34)	195.12 (35.02-7706.87)
Royal Brisbane and Women's Hospital	115	14	78.28	0.18 (0.10-0.30)	67.10 (39.99-122.73)
Sunshine Coast University Hospital	10	0	5.99	0.00 (0.00-0.62)	. (19.49-.)
Toowoomba Hospital	42	21	30.34	0.69 (0.43-1.06)	17.33 (11.34-28.00)
Townsville University Hospital	63	25	46.09	0.54 (0.35-0.80)	22.12 (14.99-34.18)

continued on next page

continued from previous page

Centre	PD Patients	*No of Episodes	Person Years	*Rate (95% CI)	*PM per Episode (95% CI)
New South Wales	1357	272	949.63	0.29 (0.25-0.32)	41.90 (37.20-47.36)
Coffs Harbour Hospital	5	0	4.82	0.00 (0.00-0.76)	. (15.69-.)
Dubbo Base Hospital	19	3	15.51	0.19 (0.04-0.57)	62.05 (21.23-300.89)
Gosford Hospital	45	11	26.72	0.41 (0.21-0.74)	29.15 (16.29-58.39)
John Hunter Hospital	98	29	63.48	0.46 (0.31-0.66)	26.27 (18.29-39.22)
Lismore Base Hospital	11	1	9.16	0.11 (0.00-0.61)	109.96 (19.74-4343.31)
Manning Rural Referral Hospital	19	4	12.77	0.31 (0.09-0.80)	38.30 (14.96-140.57)
Nepean Hospital	58	7	37.50	0.19 (0.08-0.38)	64.29 (31.20-159.91)
Orange Health Service	17	8	12.64	0.63 (0.27-1.25)	18.97 (9.63-43.93)
Port Macquarie Base Hospital	16	4	12.34	0.32 (0.09-0.83)	37.01 (14.45-135.83)
Royal North Shore Hospital	79	12	50.35	0.24 (0.12-0.42)	50.35 (28.82-97.44)
South West Sydney Renal Service	286	26	211.94	0.12 (0.08-0.18)	97.82 (66.76-149.74)
St George Hospital	62	7	45.09	0.16 (0.06-0.32)	77.29 (37.51-192.24)
St Vincent's Hospital Sydney	33	6	22.11	0.27 (0.10-0.59)	44.21 (20.31-120.47)
Statewide Renal Services	150	33	100.48	0.33 (0.23-0.46)	36.54 (26.02-53.08)
<i>Concord Repatriation General Hospital</i>	65	11	49.41	0.22 (0.11-0.40)	53.90 (30.12-107.97)
<i>Griffith Base Hospital</i>	3	0	1.77	0.00 (0.00-2.09)	. (5.74-.)
<i>Royal Prince Alfred Hospital</i>	62	15	38.72	0.39 (0.22-0.64)	30.97 (18.78-55.34)
<i>Wagga Wagga Base Hospital</i>	20	7	10.59	0.66 (0.27-1.36)	18.15 (8.81-45.15)
Tamworth Hospital	31	3	23.01	0.13 (0.03-0.38)	92.05 (31.50-446.34)
The Prince of Wales Hospital	37	7	21.94	0.32 (0.13-0.66)	37.60 (18.25-93.53)
The Tweed Hospital	14	5	9.36	0.53 (0.17-1.25)	22.46 (9.62-69.17)
Westmead Hospital	318	91	227.56	0.40 (0.32-0.49)	30.01 (24.44-37.27)
Wollongong Hospital	59	15	42.86	0.35 (0.20-0.58)	34.28 (20.79-61.26)
Australian Capital Territory	62	15	36.72	0.41 (0.23-0.67)	29.38 (17.81-52.49)
Canberra Hospital	62	15	36.72	0.41 (0.23-0.67)	29.38 (17.81-52.49)
Victoria	834	108	574.46	0.19 (0.15-0.23)	63.83 (52.87-77.81)

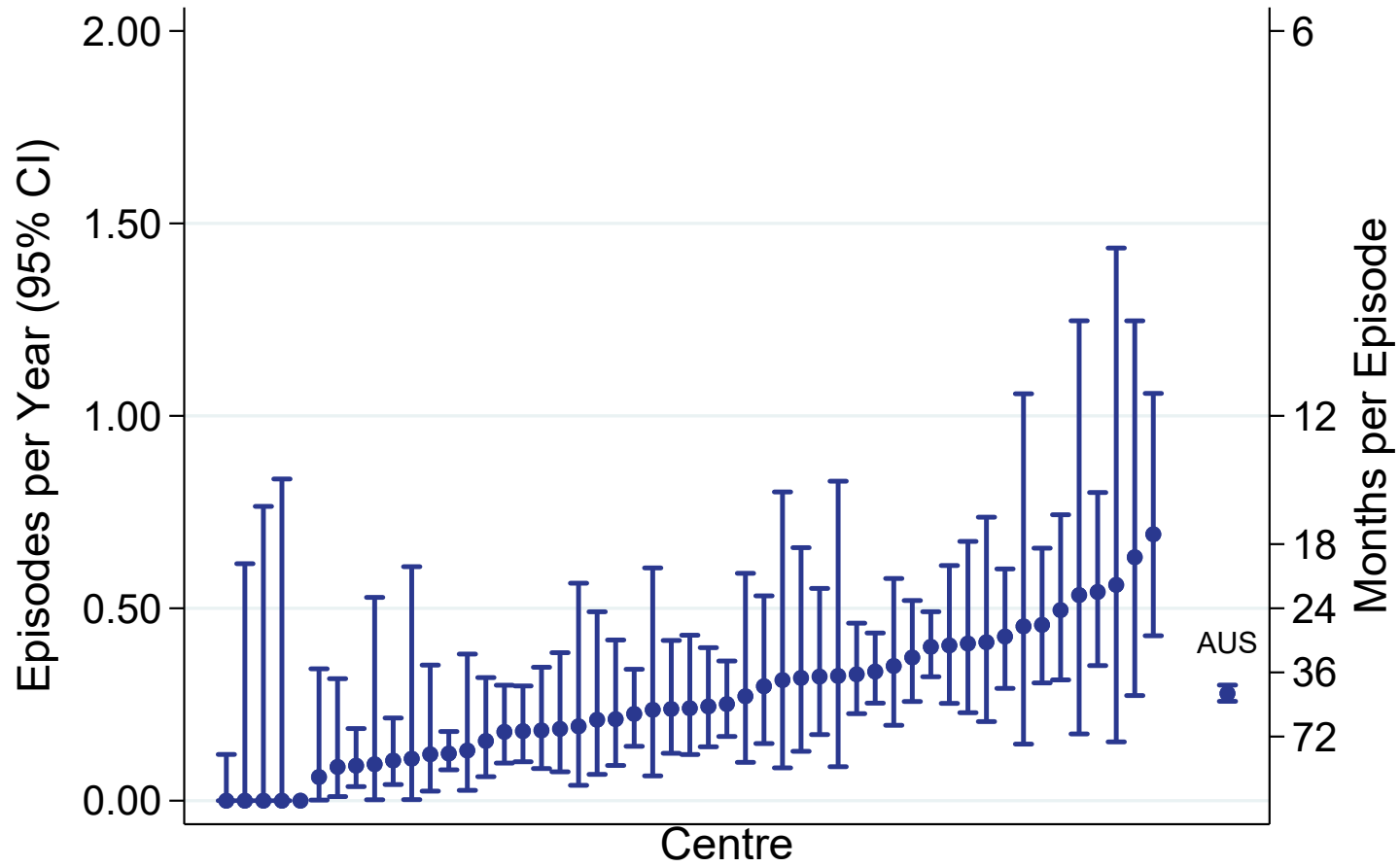
continued on next page

continued from previous page

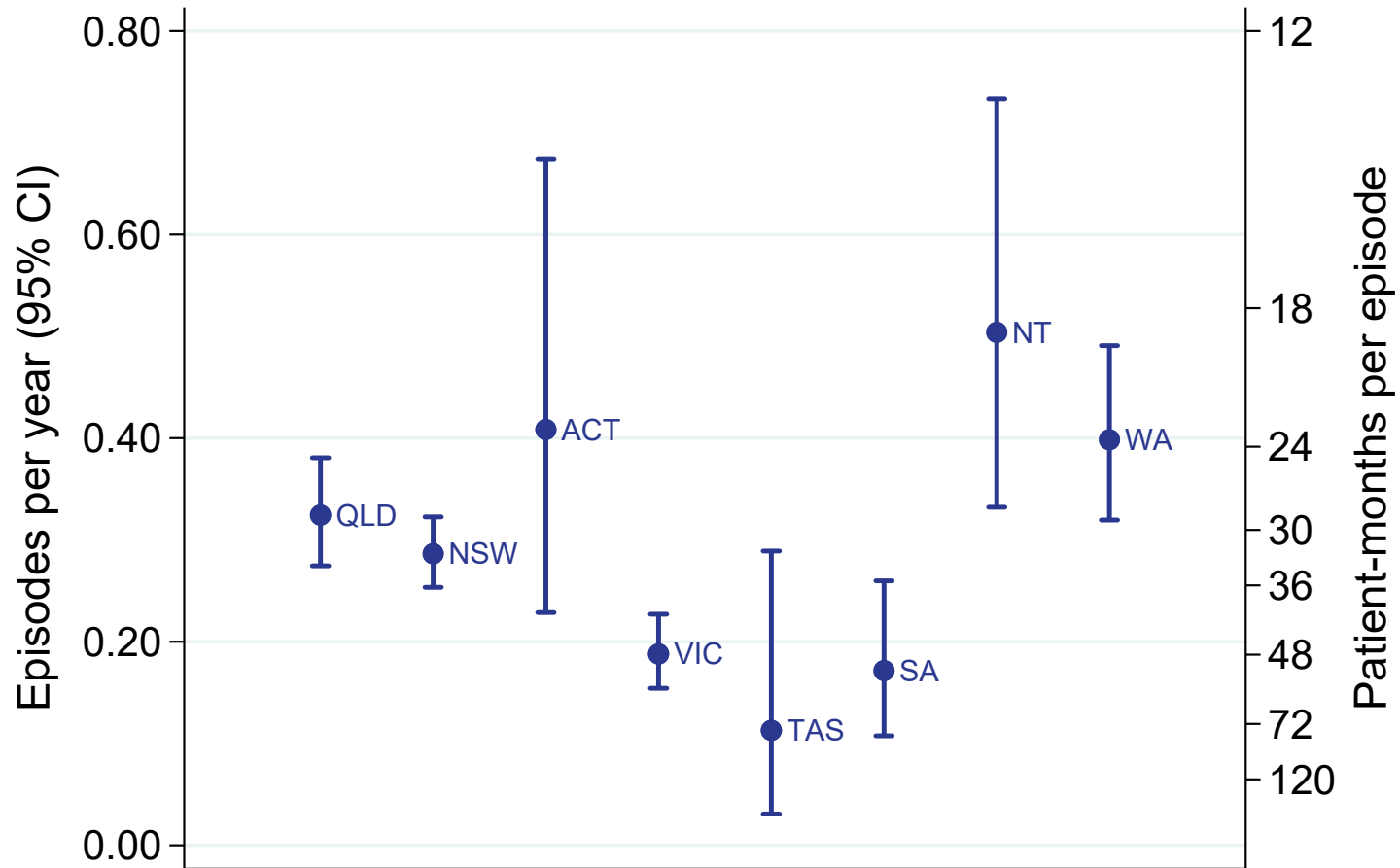
Centre	PD Patients	*No of Episodes	Person Years	*Rate (95% CI)	*PM per Episode (95% CI)
Alfred Hospital	94	7	67.11	0.10 (0.04-0.21)	115.04 (55.83-286.14)
Austin Hospital	51	8	37.75	0.21 (0.09-0.42)	56.62 (28.74-131.16)
Bendigo Hospital	53	11	36.99	0.30 (0.15-0.53)	40.35 (22.55-80.83)
Eastern Health Integrated Renal Services	78	9	49.27	0.18 (0.08-0.35)	65.70 (34.61-143.68)
Monash Medical Centre	167	28	111.50	0.25 (0.17-0.36)	47.79 (33.06-71.91)
Northern Health Service Melbourne	35	2	22.79	0.09 (0.01-0.32)	136.72 (37.85-1128.96)
St Vincent's Hospital Melbourne	96	16	65.34	0.24 (0.14-0.40)	49.01 (30.18-85.74)
The Royal Melbourne Hospital	120	15	82.99	0.18 (0.10-0.30)	66.39 (40.25-118.63)
University Hospital Geelong Barwon Health	32	5	23.77	0.21 (0.07-0.49)	57.05 (24.45-175.70)
Western Health Service	108	7	76.95	0.09 (0.04-0.19)	131.92 (64.03-328.11)
Tasmania	49	4	35.43	0.11 (0.03-0.29)	106.29 (41.51-390.11)
Launceston General Hospital	30	3	24.88	0.12 (0.02-0.35)	99.54 (34.06-482.67)
Royal Hobart Hospital	19	1	10.55	0.09 (0.00-0.53)	126.55 (22.71-4998.63)
South Australia	223	22	128.22	0.17 (0.11-0.26)	69.94 (46.19-111.60)
Central Northern Adelaide Renal Service	179	22	97.53	0.23 (0.14-0.34)	53.20 (35.14-84.89)
Flinders Medical Centre	44	0	30.69	0.00 (0.00-0.12)	. (99.84-.)
Northern Territory	74	27	53.58	0.50 (0.33-0.73)	23.81 (16.37-36.14)
Alice Springs Hospital	10	4	7.13	0.56 (0.15-1.44)	21.40 (8.36-78.53)
Royal Darwin Hospital	64	23	46.45	0.50 (0.31-0.74)	24.23 (16.15-38.23)
Western Australia	336	88	220.88	0.40 (0.32-0.49)	30.12 (24.45-37.56)
Fiona Stanley Hospital	87	22	54.51	0.40 (0.25-0.61)	29.73 (19.64-47.45)
Royal Perth Hospital	113	32	75.02	0.43 (0.29-0.60)	28.13 (19.93-41.13)
Sir Charles Gairdner Hospital	136	34	91.35	0.37 (0.26-0.52)	32.24 (23.07-46.56)

PD Peritonitis Rate, Adults

01 January 2020 - 31 December 2020



PD Peritonitis Rate, Adults By Jurisdiction, 2020



1.2 Paediatric

This table presents the total number of peritonitis episodes and patient exposure in years by Centre. Patient totals, exposure and peritonitis episodes were determined using the hospital at which the patient was receiving treatment at the time. So, if a patient transferred units during the observation period, the subsequent exposure and peritonitis episodes were allocated to the new unit. Months per episode (PM per Episode) is also reported. This should be interpreted as the average number of months between episodes of peritonitis; it can not be calculated if the peritonitis rate is zero. Patients are included in this paediatric report if they were treated at a paediatric hospital. In rare cases when patients younger than 18 years are treated at an adult centre, they are included in the adult report. Any patients 18 years and older treated at a paediatric hospital are included in this report. This quality indicator is presented for Australia only as New Zealand peritonitis episode data is not currently available to ANZDATA.

Centre	PD Patients	No of Episodes	Person Years	Rate (95% CI)	PM per Episode (95% CI)
Australia	55	10	33.94	0.29 (0.14-0.54)	40.73 (22.15-84.93)
Queensland	17	4	10.70	0.37 (0.10-0.96)	32.11 (12.54-117.87)
Child and Adolescent Renal Service	17	4	10.70	0.37 (0.10-0.96)	32.11 (12.54-117.87)
New South Wales	17	2	7.51	0.27 (0.03-0.96)	45.04 (12.47-371.94)
Sydney Children's Hospital	9	0	3.98	0.00 (0.00-0.93)	. (12.94-.)
The Children's Hospital at Westmead	8	2	3.53	0.57 (0.07-2.05)	21.17 (5.86-174.84)
Victoria	13	1	10.18	0.10 (0.00-0.55)	122.18 (21.93-4826.04)
Monash Children's Centre	5	1	4.40	0.23 (0.01-1.27)	52.83 (9.48-2086.66)
Royal Children's Hospital	8	0	5.78	0.00 (0.00-0.64)	. (18.80-.)
South Australia	5	3	3.96	0.76 (0.16-2.21)	15.86 (5.43-76.90)
Women's and Children's Hospital	5	3	3.96	0.76 (0.16-2.21)	15.86 (5.43-76.90)
Western Australia	3	0	1.58	0.00 (0.00-2.34)	. (5.14-.)
Perth Children's Hospital	3	0	1.58	0.00 (0.00-2.34)	. (5.14-.)

2 Dialysis Access Planning at Commencement of Dialysis

2.1 All Dialysis Access Planning

2.1.1 Adult

This table presents the numbers of patients beginning haemodialysis or peritoneal dialysis and the percentage starting with a permanent access (an AVF or AVG for haemodialysis and all peritoneal dialysis patients) during the observation window by Centre, where dialysis was the first kidney replacement therapy. Patients are excluded from this adult report if they were treated at a paediatric hospital. In rare cases when patients younger than 18 years are treated at an adult centre, they are included in this adult report. Any patients 18 years and older treated at a paediatric hospital are excluded from this report. Some Centres did not report type of first access for all new HD patients. The percent beginning with a permanent access is based on the number of patients with data available for first access. Finally, the total of Early Referrals (patients seen more than 3 months before first treatment) and the percentage of Early Referrals with a permanent access are also presented.

Centre	Dialysis Patients	AVF or AVG or PD	Vascular Catheter	Missing Access Data	% of AVF or AVG or PD (95 % CI)	Early Referral	% of Early Referrals with AVF or AVG or PD
Australia	3148	1843	1301	4	59 (57-60)	2575	66 (65-68)
Queensland	651	370	281	0	57 (53-61)	535	67 (62-71)
Bundaberg Hospital	18	12	6	0	67 (41-87)	16	75 (48-93)
Cairns Hospital	70	46	24	0	66 (53-77)	54	81 (69-91)
Cairns Private Hospital	5	3	2	0	60 (15-95)	3	100 (29-100)
Chermside Dialysis Centre	13	6	7	0	46 (19-75)	13	46 (19-75)
Gold Coast Private Hospital	10	2	8	0	20 (3-56)	8	25 (3-65)
Gold Coast University Hospital	55	30	25	0	55 (41-68)	44	59 (43-74)
Henry Dalziel Dialysis Clinic - Greenslopes	27	13	14	0	48 (29-68)	27	48 (29-68)
Hervey Bay Hospital	10	6	4	0	60 (26-88)	8	75 (35-97)
Ipswich Hospital	6	0	6	0	0 (0-46)	4	0 (0-60)
John Flynn Private Hospital	11	6	5	0	55 (23-83)	10	60 (26-88)
Mackay Base Hospital	28	22	6	0	79 (59-92)	27	81 (62-94)

continued on next page

continued from previous page

Centre	Dialysis Patients	AVF or AVG or PD	Vascular Catheter	Missing Access Data	% of AVF or AVG or PD (95 % CI)	Early Referral	% of Early Referrals with AVF or AVG or PD
Mater Hospital, Brisbane	15	5	10	0	33 (12-62)	12	42 (15-72)
Mater Hospital, Townsville	7	3	4	0	43 (10-82)	4	75 (19-99)
Nambour Selangor Private Hospital	1	0	1	0	0 (0-98)	1	0 (0-98)
North Lakes Dialysis Centre	6	4	2	0	67 (22-96)	5	80 (28-99)
Pindara Renal Unit	10	6	4	0	60 (26-88)	9	56 (21-86)
Princess Alexandra Hospital	134	90	44	0	67 (59-75)	104	81 (72-88)
Rockhampton Hospital	11	2	9	0	18 (2-52)	5	40 (5-85)
Royal Brisbane and Women's Hospital	80	46	34	0	58 (46-68)	70	66 (53-77)
St Andrew's Ipswich Private Hospital	9	5	4	0	56 (21-86)	9	56 (21-86)
St Andrew's Toowoomba B.Braun'S Dialysis Clinic	3	2	1	0	67 (9-99)	3	67 (9-99)
Sunshine Coast University Hospital	39	21	18	0	54 (37-70)	36	58 (41-74)
Sunshine Coast University Private Hospital	3	3	0	0	100 (29-100)	3	100 (29-100)
The Wesley Hospital Brisbane	14	5	9	0	36 (13-65)	12	42 (15-72)
Thursday Island Hospital	1	1	0	0	100 (2-100)	1	100 (2-100)
Toowoomba Hospital	32	18	14	0	56 (38-74)	23	78 (56-93)
Townsville University Hospital	33	13	20	0	39 (23-58)	24	50 (29-71)
New South Wales	938	590	347	1	63 (60-66)	820	67 (64-71)
Bathurst Base Hospital	2	1	1	0	50 (1-99)	2	50 (1-99)
Coffs Harbour Hospital	16	11	5	0	69 (41-89)	14	71 (42-92)
Dubbo Base Hospital	15	9	6	0	60 (32-84)	13	62 (32-86)
Gosford Hospital	48	22	26	0	46 (31-61)	43	51 (35-67)
John Hunter Hospital	59	38	21	0	64 (51-76)	49	76 (61-87)
Lismore Base Hospital	16	9	7	0	56 (30-80)	15	60 (32-84)
Liverpool Private Dialysis Centre	8	3	5	0	38 (9-76)	8	38 (9-76)
Manning Rural Referral Hospital	9	6	3	0	67 (30-93)	8	75 (35-97)
Mater Hospital, North Sydney	1	1	0	0	100 (2-100)	1	100 (2-100)

continued on next page

continued from previous page

Centre	Dialysis Patients	AVF or AVG or PD	Vascular Catheter	Missing Access Data	% of AVF or AVG or PD (95 % CI)	Early Referral	% of Early Referrals with AVF or AVG or PD
Mayo Private Hospital	6	6	0	0	100 (54-100)	2	100 (16-100)
Nepean Hospital	62	37	25	0	60 (46-72)	55	62 (48-75)
Newcastle Dialysis Centre	5	5	0	0	100 (48-100)	5	100 (48-100)
Orange Health Service	9	4	5	0	44 (14-79)	7	57 (18-90)
Port Macquarie Base Hospital	15	8	7	0	53 (27-79)	11	64 (31-89)
Port Macquarie Private Hospital	2	2	0	0	100 (16-100)	2	100 (16-100)
Royal North Shore Hospital	59	37	22	0	63 (49-75)	43	70 (54-83)
South West Sydney Renal Service	150	102	48	0	68 (60-75)	143	67 (59-75)
St George Hospital	44	32	12	0	73 (57-85)	41	73 (57-86)
St Vincent's Hospital Sydney	27	7	20	0	26 (11-46)	12	50 (21-79)
St Vincent's Lismore Private Dialysis Centre	1	0	1	0	0 (0-98)	1	0 (0-98)
Statewide Renal Services	104	58	46	0	56 (46-66)	90	60 (49-70)
<i>Concord Repatriation General Hospital</i>	<i>37</i>	<i>20</i>	<i>17</i>	<i>0</i>	<i>54 (37-71)</i>	<i>35</i>	<i>51 (34-69)</i>
<i>Griffith Base Hospital</i>	<i>3</i>	<i>3</i>	<i>0</i>	<i>0</i>	<i>100 (29-100)</i>	<i>3</i>	<i>100 (29-100)</i>
<i>Royal Prince Alfred Hospital</i>	<i>39</i>	<i>26</i>	<i>13</i>	<i>0</i>	<i>67 (50-81)</i>	<i>38</i>	<i>68 (51-82)</i>
<i>Wagga Wagga Base Hospital</i>	<i>25</i>	<i>9</i>	<i>16</i>	<i>0</i>	<i>36 (18-57)</i>	<i>14</i>	<i>50 (23-77)</i>
Sydney Adventist Hospital	12	7	5	0	58 (28-85)	12	58 (28-85)
Tamworth Hospital	16	12	4	0	75 (48-93)	14	86 (57-98)
The Prince of Wales Hospital	26	18	8	0	69 (48-86)	25	72 (51-88)
The Tweed Hospital	20	12	8	0	60 (36-81)	19	58 (33-80)
Westmead Hospital	153	111	41	1	73 (65-80)	140	76 (69-83)
Wollongong Hospital	53	32	21	0	60 (46-74)	45	69 (53-82)
Australian Capital Territory	58	35	23	0	60 (47-73)	49	65 (50-78)
Access Nephrology	7	5	2	0	71 (29-96)	7	71 (29-96)
Canberra Hospital	51	30	21	0	59 (44-72)	42	64 (48-78)

continued on next page

continued from previous page

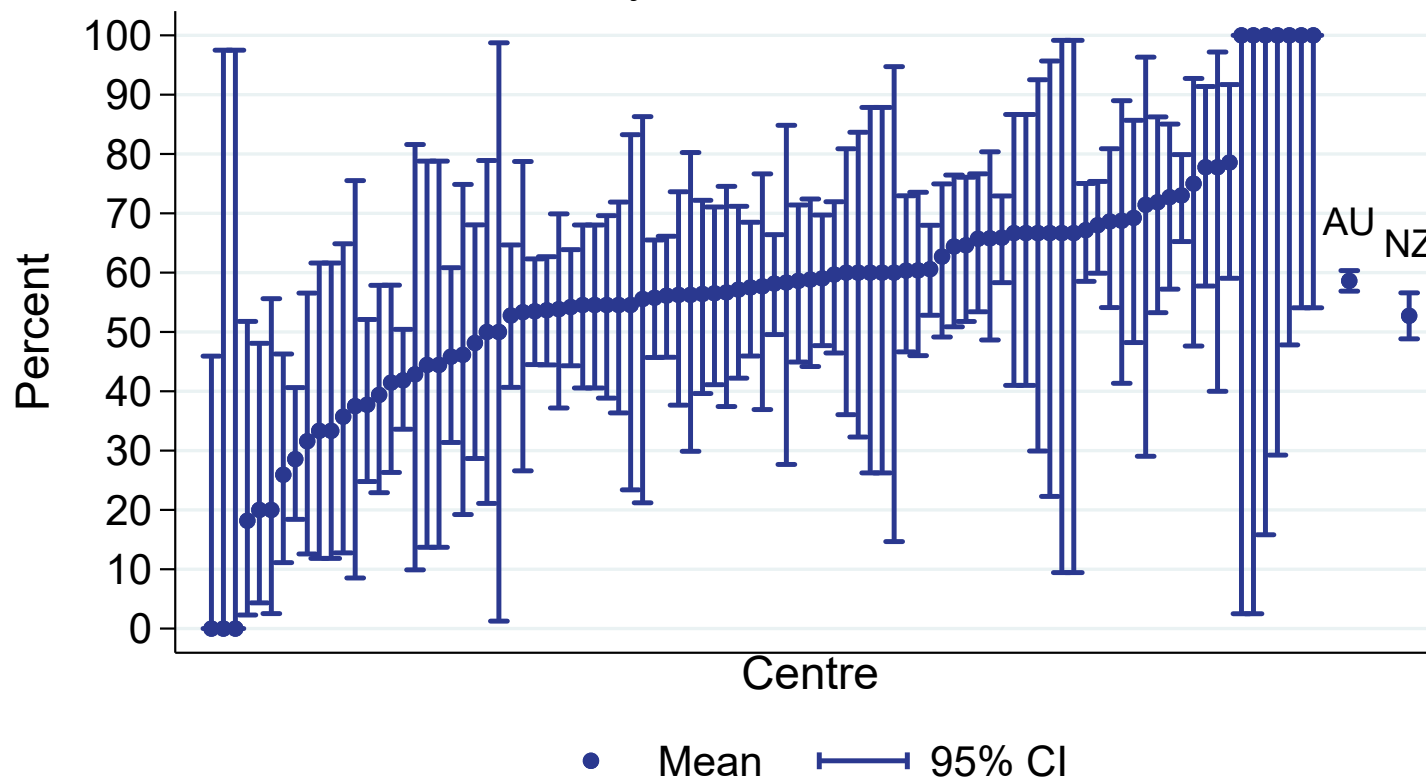
Centre	Dialysis Patients	AVF or AVG or PD	Vascular Catheter	Missing Access Data	% of AVF or AVG or PD (95 % CI)	Early Referral	% of Early Referrals with AVF or AVG or PD
Victoria	768	456	309	3	60 (56-63)	604	69 (65-73)
Alfred Hospital	49	28	21	0	57 (42-71)	29	66 (46-82)
Austin Hospital	58	35	23	0	60 (47-73)	36	75 (58-88)
Bendigo Hospital	33	23	9	1	72 (53-86)	27	81 (62-94)
Diamond Valley B.Braun Renal Care Centre	6	6	0	0	100 (54-100)	6	100 (54-100)
Eastern Health Integrated Renal Services	51	35	16	0	69 (54-81)	40	78 (62-89)
Epworth Eastern Hospital	9	4	5	0	44 (14-79)	6	67 (22-96)
Epworth Geelong Hospital	3	2	1	0	67 (9-99)	3	67 (9-99)
Epworth Richmond Hospital	15	5	10	0	33 (12-62)	6	83 (36-100)
Forest Hill Dialysis Centre	12	6	6	0	50 (21-79)	11	45 (17-77)
Malvern Dialysis Centre	19	6	13	0	32 (13-57)	13	38 (14-68)
Monash Medical Centre	170	103	67	0	61 (53-68)	147	69 (61-76)
Northern Health Service Melbourne	38	25	13	0	66 (49-80)	36	67 (49-81)
St Vincent's Hospital Melbourne	65	42	23	0	65 (52-76)	50	76 (62-87)
Sunshine Private Dialysis Centre Fresenius	9	7	2	0	78 (40-97)	7	86 (42-100)
The Royal Melbourne Hospital	109	58	49	2	54 (44-64)	88	60 (49-71)
University Hospital Geelong Barwon Health	39	22	17	0	56 (40-72)	33	64 (45-80)
Western Health Service	83	49	34	0	59 (48-70)	66	73 (60-83)
Tasmania	41	18	23	0	44 (28-60)	33	55 (36-72)
Launceston General Hospital	26	15	11	0	58 (37-77)	22	68 (45-86)
Royal Hobart Hospital	15	3	12	0	20 (4-48)	11	27 (6-61)
South Australia	231	148	83	0	64 (58-70)	207	71 (64-77)
Central Northern Adelaide Renal Service	173	114	59	0	66 (58-73)	157	72 (64-79)
Flinders Medical Centre	58	34	24	0	59 (45-71)	50	66 (51-79)

continued on next page

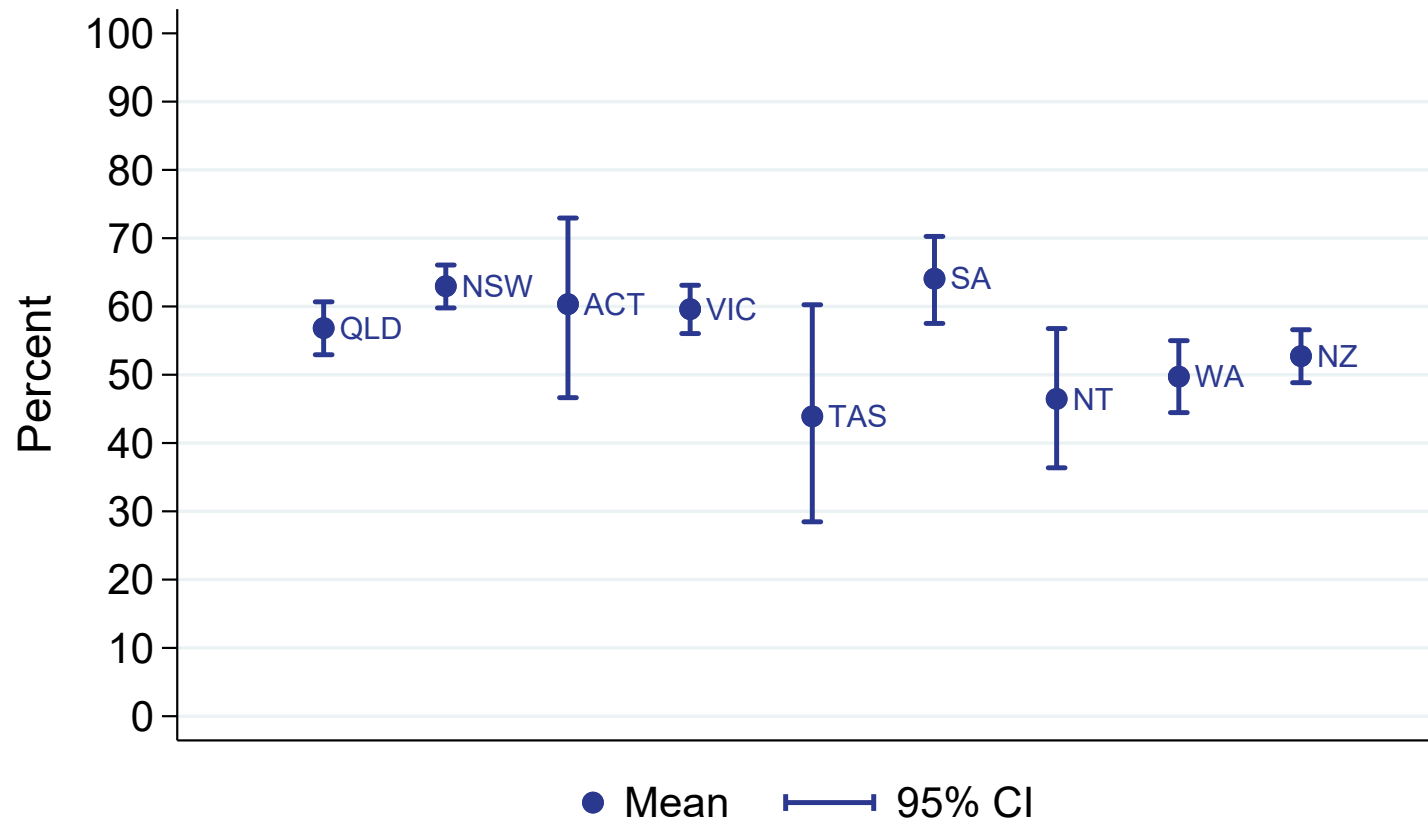
continued from previous page

Centre	Dialysis Patients	AVF or AVG or PD	Vascular Catheter	Missing Access Data	% of AVF or AVG or PD (95 % CI)	Early Referral	% of Early Referrals with AVF or AVG or PD
Northern Territory	99	46	53	0	46 (36-57)	94	47 (36-57)
Alice Springs Hospital	53	20	33	0	38 (25-52)	53	38 (25-52)
Royal Darwin Hospital	46	26	20	0	57 (41-71)	41	59 (42-74)
Western Australia	362	180	182	0	50 (44-55)	233	61 (55-68)
Fiona Stanley Hospital	141	59	82	0	42 (34-50)	62	66 (53-78)
Royal Perth Hospital	123	66	57	0	54 (44-63)	86	59 (48-70)
Sir Charles Gairdner Hospital	98	55	43	0	56 (46-66)	85	60 (49-70)
New Zealand	662	348	312	2	53 (49-57)	583	57 (53-61)
Auckland City Hospital	70	20	50	0	29 (18-41)	66	30 (20-43)
Christchurch Hospital	44	24	20	0	55 (39-70)	40	58 (41-73)
Dunedin Hospital	27	21	6	0	78 (58-91)	23	78 (56-93)
Hawkes Bay Hospital	30	17	13	0	57 (37-75)	29	55 (36-74)
Middlemore Hospital	130	69	60	1	53 (45-62)	127	54 (45-63)
Palmerston North Hospital	42	17	24	1	41 (26-58)	26	65 (44-83)
Taranaki Hospital	18	12	6	0	67 (41-87)	14	79 (49-95)
Waikato Hospital	141	82	59	0	58 (50-66)	113	67 (58-76)
Waitemata Renal Service	55	30	25	0	55 (41-68)	48	60 (45-74)
Wellington Regional Hospital	72	38	34	0	53 (41-65)	68	56 (43-68)
Whangarei Hospital	33	18	15	0	55 (36-72)	29	55 (36-74)

All dialysis access planning (AVF/AVG or PD)
 % of all dialysis starts, Adults
 01 January 2020 - 31 December 2020



All dialysis access planning (AVF/AVG or PD)
% of all dialysis starts, Adults
By Jurisdiction, 2020



2.1.2 Paediatric

This table presents the numbers of patients beginning haemodialysis or peritoneal dialysis and the percentage starting with a permanent access (an AVF or AVG for haemodialysis and all peritoneal dialysis patients) during the observation window by Centre, where dialysis was the first kidney replacement therapy. Patients are included in this paediatric report if they were treated at a paediatric hospital. In rare cases when patients younger than 18 years are treated at an adult centre, they are included in the adult report. Any patients 18 years and older treated at a paediatric hospital are included in this report. Finally, the total of Early Referrals (patients seen more than 3 months before first treatment) and the percentage of Early Referrals with a permanent access are also presented.

Centre	Dialysis Patients	AVF or AVG or PD	Vascular Catheter	Missing Access Data	% of AVF or AVG or PD (95 % CI)	Early Referral	% of Early Referrals with AVF or AVG or PD
Australia	26	20	6	0	77 (56-91)	20	75 (51-91)
Queensland	5	5	0	0	100 (48-100)	5	100 (48-100)
Child and Adolescent Renal Service	5	5	0	0	100 (48-100)	5	100 (48-100)
New South Wales	10	5	5	0	50 (19-81)	7	29 (4-71)
Sydney Children's Hospital	3	3	0	0	100 (29-100)	0	—
The Children's Hospital at Westmead	7	2	5	0	29 (4-71)	7	29 (4-71)
Victoria	8	7	1	0	88 (47-100)	6	100 (54-100)
Monash Children's Centre	2	2	0	0	100 (16-100)	2	100 (16-100)
Royal Children's Hospital	6	5	1	0	83 (36-100)	4	100 (40-100)
South Australia	2	2	0	0	100 (16-100)	2	100 (16-100)
Women's and Children's Hospital	2	2	0	0	100 (16-100)	2	100 (16-100)
Western Australia	1	1	0	0	100 (2-100)	0	—
Perth Children's Hospital	1	1	0	0	100 (2-100)	0	—

continued on next page

continued from previous page

Centre	Dialysis Patients	AVF or AVG or PD	Vascular Catheter	Missing Access Data	% of AVF or AVG or PD (95 % CI)	Early Referral	% of Early Referrals with AVF or AVG or PD
New Zealand	4	4	0	0	100 (40-100)	2	100 (16-100)
Starship Children's Hospital	4	4	0	0	100 (40-100)	2	100 (16-100)

2.2 Vascular Access at First Haemodialysis

2.2.1 Adult

This table presents the numbers of patients beginning haemodialysis and the percentage starting with an AVF or AVG during the observation window by Centre, where HD was the first kidney replacement therapy. Patients are excluded from this adult report if they were treated at a paediatric hospital. In rare cases when patients younger than 18 years are treated at an adult centre, they are included in this adult report. Any patients 18 years and older treated at a paediatric hospital are excluded from this report. Some Centres did not report type of first access for all new HD patients. The percent beginning with AVF or AVG is based on the number of patients with data available for first access. Finally, the total of Early Referrals (patients seen more than 3 months before first treatment) and the percentage of Early Referrals with AVF or AVG are also presented.

Centre	HD Patients	AVF or AVG	Vascular Catheter	Missing Access Data	% of AVF or AVG (95 % CI)	Early Referral	% of Early Referrals with AVF or AVG
Australia	2275	970	1301	4	43 (41-45)	1789	52 (49-54)
Queensland	486	205	281	0	42 (38-47)	382	53 (48-58)
Bundaberg Hospital	14	8	6	0	57 (29-82)	12	67 (35-90)
Cairns Hospital	56	32	24	0	57 (43-70)	42	76 (61-88)
Cairns Private Hospital	5	3	2	0	60 (15-95)	3	100 (29-100)
Chermside Dialysis Centre	13	6	7	0	46 (19-75)	13	46 (19-75)
Gold Coast Private Hospital	10	2	8	0	20 (3-56)	8	25 (3-65)
Gold Coast University Hospital	37	12	25	0	32 (18-50)	30	40 (23-59)
Henry Dalziel Dialysis Clinic - Greenslopes	27	13	14	0	48 (29-68)	27	48 (29-68)
Hervey Bay Hospital	7	3	4	0	43 (10-82)	5	60 (15-95)
Ipswich Hospital	6	0	6	0	0 (0-46)	4	0 (0-60)
John Flynn Private Hospital	11	6	5	0	55 (23-83)	10	60 (26-88)
Mackay Base Hospital	24	18	6	0	75 (53-90)	23	78 (56-93)
Mater Hospital, Brisbane	15	5	10	0	33 (12-62)	12	42 (15-72)
Mater Hospital, Townsville	7	3	4	0	43 (10-82)	4	75 (19-99)
Nambour Selangor Private Hospital	1	0	1	0	0 (0-98)	1	0 (0-98)

continued on next page

continued from previous page

Centre	HD Patients	AVF or AVG	Vascular Catheter	Missing Access Data	% of AVF or AVG (95 % CI)	Early Referral	% of Early Referrals with AVF or AVG
North Lakes Dialysis Centre	6	4	2	0	67 (22-96)	5	80 (28-99)
Pindara Renal Unit	10	6	4	0	60 (26-88)	9	56 (21-86)
Princess Alexandra Hospital	67	23	44	0	34 (23-47)	42	52 (36-68)
Rockhampton Hospital	11	2	9	0	18 (2-52)	5	40 (5-85)
Royal Brisbane and Women's Hospital	48	14	34	0	29 (17-44)	38	37 (22-54)
St Andrew's Ipswich Private Hospital	9	5	4	0	56 (21-86)	9	56 (21-86)
St Andrew's Toowoomba B.Braun'S Dialysis Clinic	3	2	1	0	67 (9-99)	3	67 (9-99)
Sunshine Coast University Hospital	34	16	18	0	47 (30-65)	31	52 (33-70)
Sunshine Coast University Private Hospital	3	3	0	0	100 (29-100)	3	100 (29-100)
The Wesley Hospital Brisbane	14	5	9	0	36 (13-65)	12	42 (15-72)
Thursday Island Hospital	1	1	0	0	100 (2-100)	1	100 (2-100)
Toowoomba Hospital	23	9	14	0	39 (20-61)	14	64 (35-87)
Townsville University Hospital	24	4	20	0	17 (5-37)	16	25 (7-52)
New South Wales	616	268	347	1	44 (40-48)	522	49 (44-53)
Bathurst Base Hospital	2	1	1	0	50 (1-99)	2	50 (1-99)
Coffs Harbour Hospital	15	10	5	0	67 (38-88)	14	71 (42-92)
Dubbo Base Hospital	10	4	6	0	40 (12-74)	9	44 (14-79)
Gosford Hospital	36	10	26	0	28 (14-45)	31	32 (17-51)
John Hunter Hospital	41	20	21	0	49 (33-65)	31	61 (42-78)
Lismore Base Hospital	14	7	7	0	50 (23-77)	13	54 (25-81)
Liverpool Private Dialysis Centre	8	3	5	0	38 (9-76)	8	38 (9-76)
Manning Rural Referral Hospital	5	2	3	0	40 (5-85)	4	50 (7-93)
Mater Hospital, North Sydney	1	1	0	0	100 (2-100)	1	100 (2-100)
Mayo Private Hospital	6	6	0	0	100 (54-100)	2	100 (16-100)
Nepean Hospital	42	17	25	0	40 (26-57)	37	43 (27-61)
Newcastle Dialysis Centre	5	5	0	0	100 (48-100)	5	100 (48-100)
Orange Health Service	6	1	5	0	17 (0-64)	4	25 (1-81)

continued on next page

continued from previous page

Centre	HD Patients	AVF or AVG	Vascular Catheter	Missing Access Data	% of AVF or AVG (95 % CI)	Early Referral	% of Early Referrals with AVF or AVG
Port Macquarie Base Hospital	13	6	7	0	46 (19-75)	9	56 (21-86)
Port Macquarie Private Hospital	2	2	0	0	100 (16-100)	2	100 (16-100)
Royal North Shore Hospital	39	17	22	0	44 (28-60)	30	57 (37-75)
South West Sydney Renal Service	77	29	48	0	38 (27-49)	76	38 (27-50)
St George Hospital	29	17	12	0	59 (39-76)	27	59 (39-78)
St Vincent's Hospital Sydney	22	2	20	0	9 (1-29)	8	25 (3-65)
St Vincent's Lismore Private Dialysis Centre	1	0	1	0	0 (0-98)	1	0 (0-98)
Statewide Renal Services	74	28	46	0	38 (27-50)	61	41 (29-54)
<i>Concord Repatriation General Hospital</i>	<i>25</i>	<i>8</i>	<i>17</i>	<i>0</i>	<i>32 (15-54)</i>	<i>23</i>	<i>26 (10-48)</i>
<i>Griffith Base Hospital</i>	<i>3</i>	<i>3</i>	<i>0</i>	<i>0</i>	<i>100 (29-100)</i>	<i>3</i>	<i>100 (29-100)</i>
<i>Royal Prince Alfred Hospital</i>	<i>24</i>	<i>11</i>	<i>13</i>	<i>0</i>	<i>46 (26-67)</i>	<i>23</i>	<i>48 (27-69)</i>
<i>Wagga Wagga Base Hospital</i>	<i>22</i>	<i>6</i>	<i>16</i>	<i>0</i>	<i>27 (11-50)</i>	<i>12</i>	<i>42 (15-72)</i>
Sydney Adventist Hospital	12	7	5	0	58 (28-85)	12	58 (28-85)
Tamworth Hospital	9	5	4	0	56 (21-86)	7	71 (29-96)
The Prince of Wales Hospital	17	9	8	0	53 (28-77)	16	56 (30-80)
The Tweed Hospital	14	6	8	0	43 (18-71)	14	43 (18-71)
Westmead Hospital	78	36	41	1	47 (35-58)	68	51 (39-64)
Wollongong Hospital	38	17	21	0	45 (29-62)	30	53 (34-72)
Australian Capital Territory	43	20	23	0	47 (31-62)	37	54 (37-71)
Access Nephrology	7	5	2	0	71 (29-96)	7	71 (29-96)
Canberra Hospital	36	15	21	0	42 (26-59)	30	50 (31-69)
Victoria	571	259	309	3	46 (41-50)	429	56 (52-61)
Alfred Hospital	36	15	21	0	42 (26-59)	25	60 (39-79)
Austin Hospital	48	25	23	0	52 (37-67)	27	67 (46-83)
Bendigo Hospital	17	7	9	1	44 (20-70)	12	58 (28-85)
Diamond Valley B.Braun Renal Care Centre	6	6	0	0	100 (54-100)	6	100 (54-100)

continued on next page

continued from previous page

Centre	HD Patients	AVF or AVG	Vascular Catheter	Missing Access Data	% of AVF or AVG (95 % CI)	Early Referral	% of Early Referrals with AVF or AVG
Eastern Health Integrated Renal Services	31	15	16	0	48 (30-67)	22	59 (36-79)
Epworth Eastern Hospital	9	4	5	0	44 (14-79)	6	67 (22-96)
Epworth Geelong Hospital	3	2	1	0	67 (9-99)	3	67 (9-99)
Epworth Richmond Hospital	15	5	10	0	33 (12-62)	6	83 (36-100)
Forest Hill Dialysis Centre	12	6	6	0	50 (21-79)	11	45 (17-77)
Malvern Dialysis Centre	19	6	13	0	32 (13-57)	13	38 (14-68)
Monash Medical Centre	129	62	67	0	48 (39-57)	108	57 (48-67)
Northern Health Service Melbourne	27	14	13	0	52 (32-71)	26	54 (33-73)
St Vincent's Hospital Melbourne	41	18	23	0	44 (28-60)	29	59 (39-76)
Sunshine Private Dialysis Centre Fresenius	9	7	2	0	78 (40-97)	7	86 (42-100)
The Royal Melbourne Hospital	82	31	49	2	39 (28-50)	63	44 (32-58)
University Hospital Geelong Barwon Health	30	13	17	0	43 (25-63)	24	50 (29-71)
Western Health Service	57	23	34	0	40 (28-54)	41	56 (40-72)
Tasmania	33	10	23	0	30 (16-49)	25	40 (21-61)
Launceston General Hospital	19	8	11	0	42 (20-67)	15	53 (27-79)
Royal Hobart Hospital	14	2	12	0	14 (2-43)	10	20 (3-56)
South Australia	163	80	83	0	49 (41-57)	141	57 (48-65)
Central Northern Adelaide Renal Service	116	57	59	0	49 (40-59)	101	56 (46-66)
Flinders Medical Centre	47	23	24	0	49 (34-64)	40	58 (41-73)
Northern Territory	84	31	53	0	37 (27-48)	81	38 (28-50)
Alice Springs Hospital	53	20	33	0	38 (25-52)	53	38 (25-52)
Royal Darwin Hospital	31	11	20	0	35 (19-55)	28	39 (22-59)
Western Australia	279	97	182	0	35 (29-41)	172	48 (40-55)
Fiona Stanley Hospital	119	37	82	0	31 (23-40)	47	55 (40-70)

continued on next page

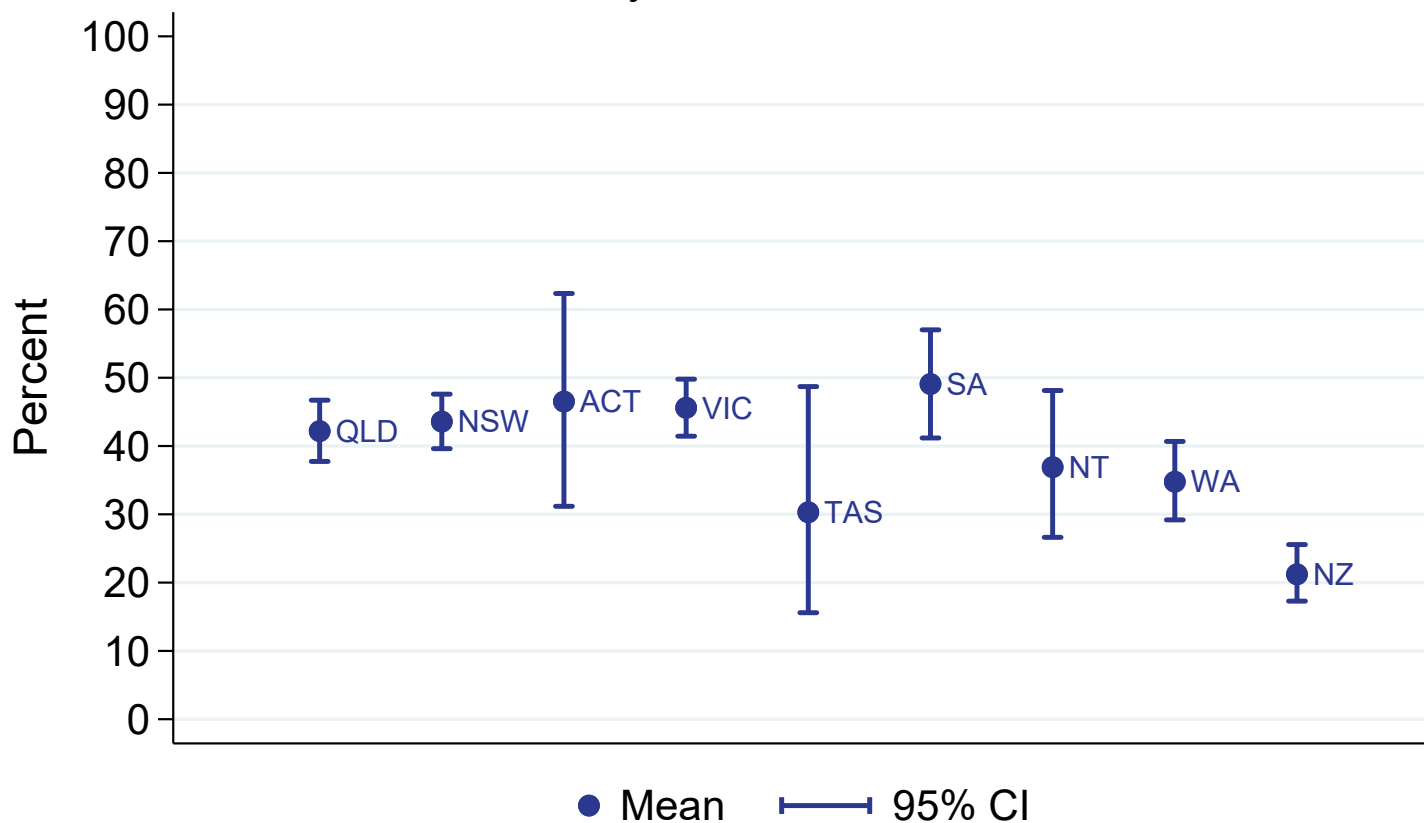
continued from previous page

Centre	HD Patients	AVF or AVG	Vascular Catheter	Missing Access Data	% of AVF or AVG (95 % CI)	Early Referral	% of Early Referrals with AVF or AVG
Royal Perth Hospital	92	35	57	0	38 (28-49)	67	48 (35-60)
Sir Charles Gairdner Hospital	68	25	43	0	37 (25-49)	58	41 (29-55)
New Zealand	398	84	312	2	21 (17-26)	332	25 (20-30)
Auckland City Hospital	56	6	50	0	11 (4-22)	52	12 (4-23)
Christchurch Hospital	24	4	20	0	17 (5-37)	21	19 (5-42)
Dunedin Hospital	11	5	6	0	45 (17-77)	10	50 (19-81)
Hawkes Bay Hospital	17	4	13	0	24 (7-50)	17	24 (7-50)
Middlemore Hospital	86	25	60	1	29 (20-40)	83	30 (21-41)
Palmerston North Hospital	28	3	24	1	11 (2-29)	12	25 (5-57)
Taranaki Hospital	8	2	6	0	25 (3-65)	5	40 (5-85)
Waikato Hospital	65	6	59	0	9 (3-19)	43	14 (5-28)
Waitemata Renal Service	37	12	25	0	32 (18-50)	30	37 (20-56)
Wellington Regional Hospital	44	10	34	0	23 (11-38)	40	25 (13-41)
Whangarei Hospital	22	7	15	0	32 (14-55)	19	32 (13-57)

01 January 2020 - 31 December 2020



Vascular access at first HD (AVF/AVG)
% of all HD starts, Adults
By Jurisdiction, 2020



2.2.2 Paediatric

This table presents the numbers of patients beginning haemodialysis and the percentage starting with an AVF or AVG during the observation window by Centre, where HD was the first kidney replacement therapy. Patients are included in this paediatric report if they were treated at a paediatric hospital. In rare cases when patients younger than 18 years are treated at an adult centre, they are included in the adult report. Any patients 18 years and older treated at a paediatric hospital are included in this report. Some Centres did not report type of first access for all new HD patients. The percent beginning with AVF or AVG is based on the number of patients with data available for first access. Finally, the total of Early Referrals (patients seen more than 3 months before first treatment) and the percentage of Early Referrals with AVF or AVG are also presented.

Centre	HD Patients	AVF or AVG	Vascular Catheter	Missing Access Data	% of AVF or AVG (95 % CI)	Early Referral	% of Early Referrals with AVF or AVG
Australia	6	0	6	0	0 (0-46)	5	0 (0-52)
New South Wales	5	0	5	4	0 (0-98)	5	0 (0-52)
The Children's Hospital at Westmead	5	0	5	0	0 (0-52)	5	0 (0-52)
Victoria	1	0	1	0	0 (0-98)	0	—
Royal Children's Hospital	1	0	1	0	0 (0-98)	0	—

2.3 HD Vascular Access Planning

2.3.1 Adult

This table presents the numbers of patients on haemodialysis at day 90 and the percentage starting haemodialysis with a permanent vascular access (an AVF or AVG) during the observation window by Centre. Modality changes of less than 30 days are ignored for the determination of modality at day 90. Patients are excluded from this adult report if they were treated at a paediatric hospital. In rare cases when patients younger than 18 years are treated at an adult centre, they are included in this adult report. Any patients 18 years and older treated at a paediatric hospital are excluded from this report. Some Centres did not report type of first access for all new HD patients. The percent beginning with a permanent access is based on the number of patients with data available for first access. Finally, the total of Early Referrals (patients seen more than 3 months before first treatment) and the percentage of Early Referrals with a permanent access are also presented.

Centre	HD Patients	AVF or AVG	Vascular Catheter	Missing Access Data	% of AVF or AVG (95 % CI)	Early Referral	% of Early Referrals with AVF or AVG
Australia	2144	955	1181	8	45 (43-47)	1718	53 (51-56)
Queensland	439	202	234	3	46 (42-51)	349	57 (52-63)
Bundaberg Hospital	9	6	3	0	67 (30-93)	8	75 (35-97)
Cairns Hospital	49	31	18	0	63 (48-77)	39	79 (64-91)
Cairns Private Hospital	4	3	1	0	75 (19-99)	3	100 (29-100)
Chermside Dialysis Centre	9	6	3	0	67 (30-93)	9	67 (30-93)
Gold Coast Private Hospital	11	2	9	0	18 (2-52)	10	20 (3-56)
Gold Coast University Hospital	34	12	20	2	38 (21-56)	27	44 (25-65)
Henry Dalziel Dialysis Clinic - Greenslopes	28	15	13	0	54 (34-72)	28	54 (34-72)
Hervey Bay Hospital	11	3	8	0	27 (6-61)	8	38 (9-76)
Ipswich Hospital	5	0	5	0	0 (0-52)	3	0 (0-71)
John Flynn Private Hospital	10	5	5	0	50 (19-81)	10	50 (19-81)
Mackay Base Hospital	24	21	3	0	88 (68-97)	23	87 (66-97)
Mater Hospital, Brisbane	15	5	10	0	33 (12-62)	11	45 (17-77)
Mater Hospital, Townsville	7	3	4	0	43 (10-82)	5	60 (15-95)

continued on next page

continued from previous page

Centre	HD Patients	AVF or AVG	Vascular Catheter	Missing Access Data	% of AVF or AVG (95 % CI)	Early Referral	% of Early Referrals with AVF or AVG
Nambour Selangor Private Hospital	3	2	1	0	67 (9-99)	3	67 (9-99)
North Lakes Dialysis Centre	5	3	2	0	60 (15-95)	4	75 (19-99)
Pindara Renal Unit	6	4	2	0	67 (22-96)	5	60 (15-95)
Princess Alexandra Hospital	59	22	36	1	38 (26-52)	34	65 (46-80)
Rockhampton Hospital	14	5	9	0	36 (13-65)	8	62 (24-91)
Royal Brisbane and Women's Hospital	44	15	29	0	34 (20-50)	36	42 (26-59)
St Andrew's Ipswich Private Hospital	8	5	3	0	62 (24-91)	8	62 (24-91)
St Andrew's Toowoomba B.Braun'S Dialysis Clinic	3	2	1	0	67 (9-99)	3	67 (9-99)
Sunshine Coast University Hospital	27	15	12	0	56 (35-75)	25	60 (39-79)
Sunshine Coast University Private Hospital	1	1	0	0	100 (2-100)	1	100 (2-100)
The Wesley Hospital Brisbane	10	3	7	0	30 (7-65)	9	33 (7-70)
Thursday Island Hospital	1	1	0	0	100 (2-100)	1	100 (2-100)
Toowoomba Hospital	20	7	13	0	35 (15-59)	12	58 (28-85)
Townsville University Hospital	22	5	17	0	23 (8-45)	16	31 (11-59)
New South Wales	605	271	333	1	45 (41-49)	511	50 (45-54)
Bathurst Base Hospital	1	1	0	0	100 (2-100)	1	100 (2-100)
Coffs Harbour Hospital	15	10	5	0	67 (38-88)	13	62 (32-86)
Dubbo Base Hospital	5	2	3	0	40 (5-85)	4	50 (7-93)
Gosford Hospital	39	9	30	0	23 (11-39)	33	27 (13-46)
John Hunter Hospital	42	19	22	1	46 (31-63)	32	56 (38-74)
Lismore Base Hospital	17	7	10	0	41 (18-67)	16	44 (20-70)
Liverpool Private Dialysis Centre	7	2	5	0	29 (4-71)	7	29 (4-71)
Manning Rural Referral Hospital	4	3	1	0	75 (19-99)	3	100 (29-100)
Mater Hospital, North Sydney	1	1	0	0	100 (2-100)	1	100 (2-100)
Mayo Private Hospital	6	5	1	0	83 (36-100)	3	67 (9-99)
Nepean Hospital	43	19	24	0	44 (29-60)	37	46 (29-63)
Newcastle Dialysis Centre	3	3	0	0	100 (29-100)	3	100 (29-100)

continued on next page

continued from previous page

Centre	HD Patients	AVF or AVG	Vascular Catheter	Missing Access Data	% of AVF or AVG (95 % CI)	Early Referral	% of Early Referrals with AVF or AVG
Orange Health Service	6	2	4	0	33 (4-78)	5	40 (5-85)
Port Macquarie Base Hospital	10	3	7	0	30 (7-65)	7	29 (4-71)
Port Macquarie Private Hospital	2	2	0	0	100 (16-100)	2	100 (16-100)
Royal North Shore Hospital	42	18	24	0	43 (28-59)	32	56 (38-74)
South West Sydney Renal Service	73	28	45	0	38 (27-50)	69	41 (29-53)
St George Hospital	26	14	12	0	54 (33-73)	24	54 (33-74)
St Vincent's Hospital Sydney	27	5	22	0	19 (6-38)	14	36 (13-65)
St Vincent's Lismore Private Dialysis Centre	4	1	3	0	25 (1-81)	3	33 (1-91)
Statewide Renal Services	65	28	37	0	43 (31-56)	58	41 (29-55)
<i>Concord Repatriation General Hospital</i>	<i>24</i>	<i>12</i>	<i>12</i>	<i>0</i>	<i>50 (29-71)</i>	<i>21</i>	<i>43 (22-66)</i>
<i>Griffith Base Hospital</i>	<i>2</i>	<i>2</i>	<i>0</i>	<i>0</i>	<i>100 (16-100)</i>	<i>2</i>	<i>100 (16-100)</i>
<i>Royal Prince Alfred Hospital</i>	<i>25</i>	<i>11</i>	<i>14</i>	<i>0</i>	<i>44 (24-65)</i>	<i>24</i>	<i>46 (26-67)</i>
<i>Wagga Wagga Base Hospital</i>	<i>14</i>	<i>3</i>	<i>11</i>	<i>0</i>	<i>21 (5-51)</i>	<i>11</i>	<i>18 (2-52)</i>
Sydney Adventist Hospital	13	8	5	0	62 (32-86)	13	62 (32-86)
Tamworth Hospital	11	6	5	0	55 (23-83)	7	86 (42-100)
The Prince of Wales Hospital	18	6	12	0	33 (13-59)	13	46 (19-75)
The Tweed Hospital	13	5	8	0	38 (14-68)	13	38 (14-68)
Westmead Hospital	73	41	32	0	56 (44-68)	64	62 (50-74)
Wollongong Hospital	39	23	16	0	59 (42-74)	34	65 (46-80)
Australian Capital Territory	46	23	23	0	50 (35-65)	42	55 (39-70)
Access Nephrology	6	4	2	0	67 (22-96)	6	67 (22-96)
Canberra Hospital	40	19	21	0	48 (32-64)	36	53 (35-70)
Victoria	526	238	285	3	46 (41-50)	403	56 (51-61)
Alfred Hospital	34	13	20	1	39 (23-58)	23	57 (34-77)
Austin Hospital	39	17	22	0	44 (28-60)	25	60 (39-79)
Bendigo Hospital	13	4	8	1	33 (10-65)	9	44 (14-79)

continued on next page

continued from previous page

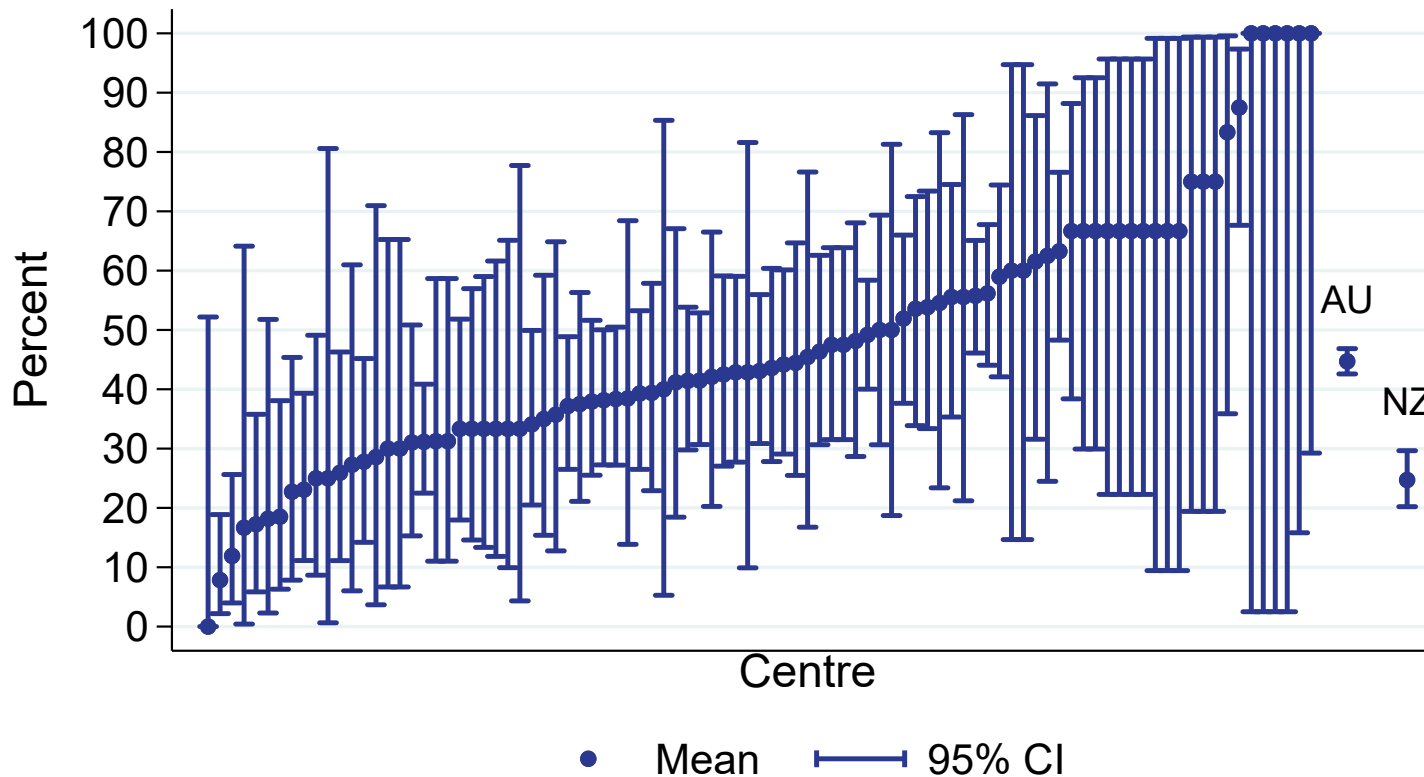
Centre	HD Patients	AVF or AVG	Vascular Catheter	Missing Access Data	% of AVF or AVG (95 % CI)	Early Referral	% of Early Referrals with AVF or AVG
Diamond Valley B.Braun Renal Care Centre	4	3	1	0	75 (19-99)	4	75 (19-99)
Eastern Health Integrated Renal Services	28	14	14	0	50 (31-69)	20	65 (41-85)
Epworth Eastern Hospital	6	4	2	0	67 (22-96)	5	80 (28-99)
Epworth Geelong Hospital	3	2	1	0	67 (9-99)	3	67 (9-99)
Epworth Richmond Hospital	11	5	6	0	45 (17-77)	6	83 (36-100)
Forest Hill Dialysis Centre	9	5	4	0	56 (21-86)	7	43 (10-82)
Malvern Dialysis Centre	19	8	11	0	42 (20-67)	16	50 (25-75)
Monash Medical Centre	122	60	62	0	49 (40-58)	101	59 (49-69)
Northern Health Service Melbourne	27	12	15	0	44 (25-65)	27	44 (25-65)
St Vincent's Hospital Melbourne	40	19	21	0	48 (32-64)	29	66 (46-82)
Sunshine Private Dialysis Centre Fresenius	5	3	2	0	60 (15-95)	3	67 (9-99)
The Royal Melbourne Hospital	83	34	48	1	41 (31-53)	65	48 (35-60)
University Hospital Geelong Barwon Health	27	13	14	0	48 (29-68)	22	55 (32-76)
Western Health Service	56	22	34	0	39 (26-53)	38	55 (38-71)
Tasmania	37	12	25	0	32 (18-50)	29	41 (24-61)
Launceston General Hospital	21	7	14	0	33 (15-57)	16	44 (20-70)
Royal Hobart Hospital	16	5	11	0	31 (11-59)	13	38 (14-68)
South Australia	165	90	75	0	55 (47-62)	144	62 (53-70)
Central Northern Adelaide Renal Service	113	63	50	0	56 (46-65)	98	63 (53-73)
Flinders Medical Centre	52	27	25	0	52 (38-66)	46	59 (43-73)
Northern Territory	73	28	45	0	38 (27-50)	70	40 (28-52)
Alice Springs Hospital	40	17	23	0	42 (27-59)	40	42 (27-59)
Royal Darwin Hospital	33	11	22	0	33 (18-52)	30	37 (20-56)
Western Australia	253	91	161	1	36 (30-42)	170	48 (40-55)

continued on next page

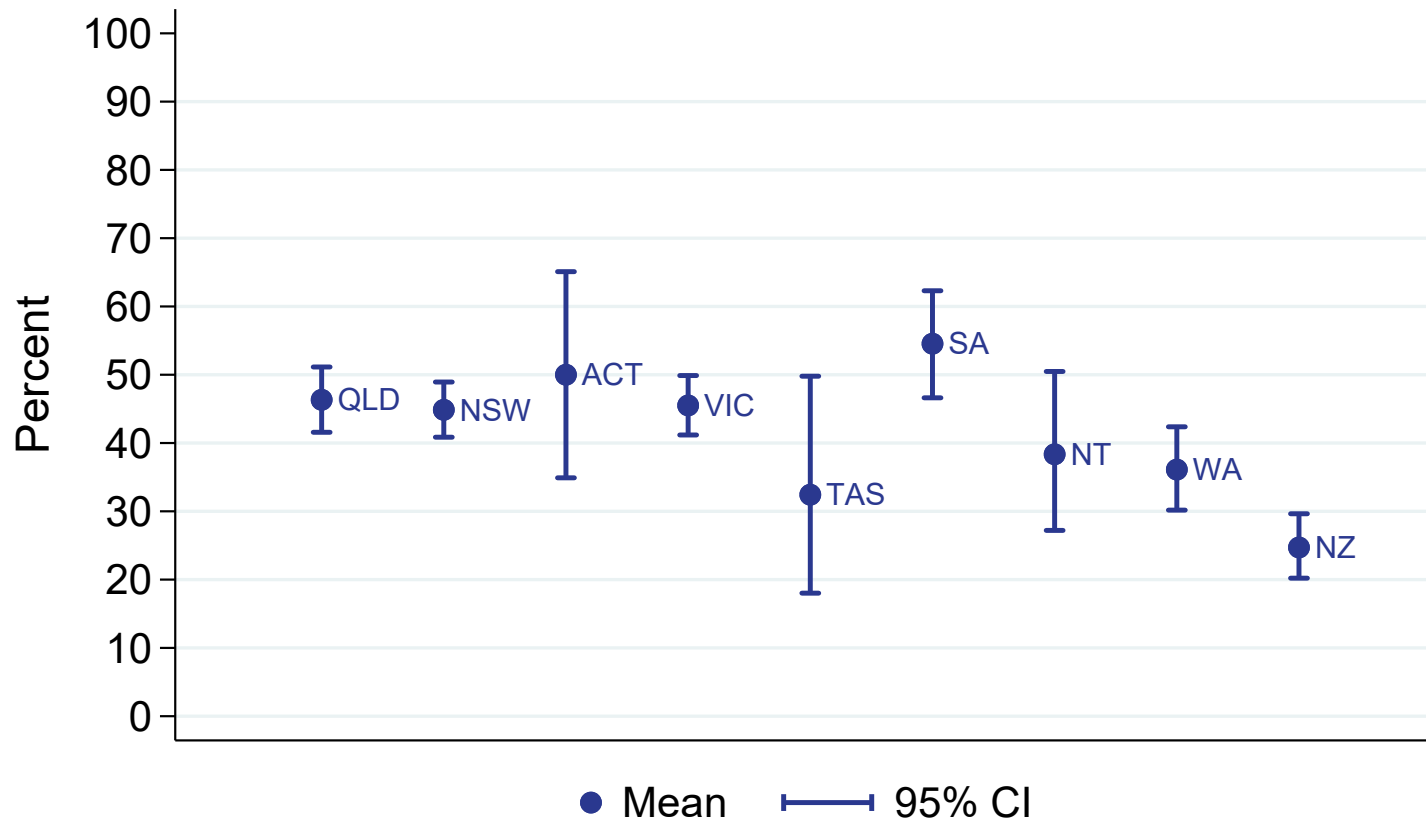
continued from previous page

Centre	HD Patients	AVF or AVG	Vascular Catheter	Missing Access Data	% of AVF or AVG (95 % CI)	Early Referral	% of Early Referrals with AVF or AVG
Fiona Stanley Hospital	106	33	73	0	31 (22-41)	50	52 (37-66)
Royal Perth Hospital	76	29	47	0	38 (27-50)	64	42 (30-55)
Sir Charles Gairdner Hospital	71	29	41	1	41 (30-54)	56	50 (36-64)
New Zealand	344	84	256	4	25 (20-30)	289	28 (23-34)
Auckland City Hospital	51	4	47	0	8 (2-19)	46	9 (2-21)
Christchurch Hospital	16	5	11	0	31 (11-59)	14	36 (13-65)
Dunedin Hospital	6	4	2	0	67 (22-96)	6	67 (22-96)
Hawkes Bay Hospital	20	5	15	0	25 (9-49)	19	26 (9-51)
Middlemore Hospital	80	29	49	2	37 (26-49)	77	38 (27-49)
Palmerston North Hospital	30	5	24	1	17 (6-36)	17	24 (7-50)
Taranaki Hospital	6	1	5	0	17 (0-64)	3	33 (1-91)
Waikato Hospital	43	5	37	1	12 (4-26)	28	18 (6-37)
Waitemata Renal Service	29	9	20	0	31 (15-51)	22	41 (21-64)
Wellington Regional Hospital	36	10	26	0	28 (14-45)	34	29 (15-47)
Whangarei Hospital	27	7	20	0	26 (11-46)	23	26 (10-48)

HD vascular access planning (AVF/AVG at first HD) % of all HD patients at day 90, Adults 01 January 2020 - 31 December 2020



HD vascular access planning (AVF/AVG at first HD)
% of all HD patients at day 90, Adults
By Jurisdiction, 2020



2.3.2 Paediatric

This table presents the numbers of patients on haemodialysis at day 90 and the percentage starting haemodialysis with a permanent vascular access (an AVF or AVG) during the observation window by Centre. Modality changes of less than 30 days are ignored for the determination of modality at day 90. Patients are included in this paediatric report if they were treated at a paediatric hospital. In rare cases when patients younger than 18 years are treated at an adult centre, they are included in the adult report. Any patients 18 years and older treated at a paediatric hospital are included in this report. Finally, the total of Early Referrals (patients seen more than 3 months before first treatment) and the percentage of Early Referrals with a permanent access are also presented.

Centre	HD Patients	AVF or AVG	Vascular Catheter	Missing Access Data	% of AVF or AVG (95 % CI)	Early Referral	% of Early Referrals with AVF or AVG
Australia	2	0	2	0	0 (0-84)	1	0 (0-98)
New South Wales	1	0	1	0	0 (0-98)	1	0 (0-98)
The Children's Hospital at Westmead	1	0	1	0	0 (0-98)	1	0 (0-98)
Victoria	1	0	1	0	0 (0-98)	0	—
Royal Children's Hospital	1	0	1	0	0 (0-98)	0	—

2.4 PD Catheter Planning

2.4.1 Adult

This table presents the numbers of patients on peritoneal dialysis at day 90 and the percentage starting kidney replacement therapy (KRT) with peritoneal dialysis during the observation window by Centre. Modality changes of less than 30 days are ignored for the determination of modality at day 90. Patients are excluded from this adult report if they were treated at a paediatric hospital. In rare cases when patients younger than 18 years are treated at an adult centre, they are included in this adult report. Any patients 18 years and older treated at a paediatric hospital are excluded from this report. Finally, the total of Early Referrals (patients seen more than 3 months before first treatment) and the percentage of Early Referrals starting with PD are also presented.

Centre	90-day PD Patients	Started KRT with PD	Did not start KRT with PD	% starting with PD (95 % CI)	Early Referral	% of Early Referrals starting with PD
Australia	876	766	110	87 (85-90)	770	89 (87-91)
Queensland	164	146	18	89 (83-93)	148	89 (83-94)
Bundaberg Hospital	5	4	1	80 (28-99)	5	80 (28-99)
Cairns Hospital	17	16	1	94 (71-100)	15	93 (68-100)
Gold Coast University Hospital	17	17	0	100 (80-100)	14	100 (77-100)
Hervey Bay Hospital	3	3	0	100 (29-100)	3	100 (29-100)
Mackay Base Hospital	5	4	1	80 (28-99)	4	75 (19-99)
Princess Alexandra Hospital	59	52	7	88 (77-95)	52	90 (79-97)
Rockhampton Hospital	3	2	1	67 (9-99)	3	67 (9-99)
Royal Brisbane and Women's Hospital	29	25	4	86 (68-96)	28	86 (67-96)
Sunshine Coast University Hospital	3	3	0	100 (29-100)	3	100 (29-100)
Toowoomba Hospital	8	7	1	88 (47-100)	8	88 (47-100)
Townsville University Hospital	15	13	2	87 (60-98)	13	85 (55-98)
New South Wales	323	293	30	91 (87-94)	297	92 (88-95)
Coffs Harbour Hospital	1	1	0	100 (2-100)	0	–
Dubbo Base Hospital	4	4	0	100 (40-100)	3	100 (29-100)

continued on next page

continued from previous page

Centre	90-day PD Patients	Started KRT with PD	Did not start KRT with PD	% starting with PD (95 % CI)	Early Referral	% of Early Referrals starting with PD
Gosford Hospital	8	6	2	75 (35-97)	8	75 (35-97)
John Hunter Hospital	22	19	3	86 (65-97)	20	95 (75-100)
Lismore Base Hospital	4	4	0	100 (40-100)	4	100 (40-100)
Manning Rural Referral Hospital	5	4	1	80 (28-99)	5	80 (28-99)
Nepean Hospital	12	10	2	83 (52-98)	10	80 (44-97)
Orange Health Service	4	4	0	100 (40-100)	4	100 (40-100)
Port Macquarie Base Hospital	2	2	0	100 (16-100)	2	100 (16-100)
Royal North Shore Hospital	16	14	2	88 (62-98)	13	85 (55-98)
South West Sydney Renal Service	70	68	2	97 (90-100)	64	98 (92-100)
St George Hospital	17	17	0	100 (80-100)	15	100 (78-100)
St Vincent's Hospital Sydney	5	4	1	80 (28-99)	3	100 (29-100)
Statewide Renal Services	35	30	5	86 (70-95)	33	88 (72-97)
<i>Concord Repatriation General Hospital</i>	<i>13</i>	<i>13</i>	<i>0</i>	<i>100 (75-100)</i>	<i>13</i>	<i>100 (75-100)</i>
<i>Griffith Base Hospital</i>	<i>2</i>	<i>1</i>	<i>1</i>	<i>50 (1-99)</i>	<i>2</i>	<i>50 (1-99)</i>
<i>Royal Prince Alfred Hospital</i>	<i>14</i>	<i>13</i>	<i>1</i>	<i>93 (66-100)</i>	<i>14</i>	<i>93 (66-100)</i>
<i>Wagga Wagga Base Hospital</i>	<i>6</i>	<i>3</i>	<i>3</i>	<i>50 (12-88)</i>	<i>4</i>	<i>50 (7-93)</i>
Tamworth Hospital	8	8	0	100 (63-100)	8	100 (63-100)
The Prince of Wales Hospital	10	9	1	90 (55-100)	10	90 (55-100)
The Tweed Hospital	7	7	0	100 (59-100)	6	100 (54-100)
Westmead Hospital	77	67	10	87 (77-94)	73	88 (78-94)
Wollongong Hospital	16	15	1	94 (70-100)	16	94 (70-100)
Australian Capital Territory	20	14	6	70 (46-88)	15	80 (52-96)
Canberra Hospital	20	14	6	70 (46-88)	15	80 (52-96)
Victoria	197	169	28	86 (80-90)	171	88 (82-92)
Alfred Hospital	12	9	3	75 (43-95)	7	86 (42-100)
Austin Hospital	11	9	2	82 (48-98)	9	89 (52-100)

continued on next page

continued from previous page

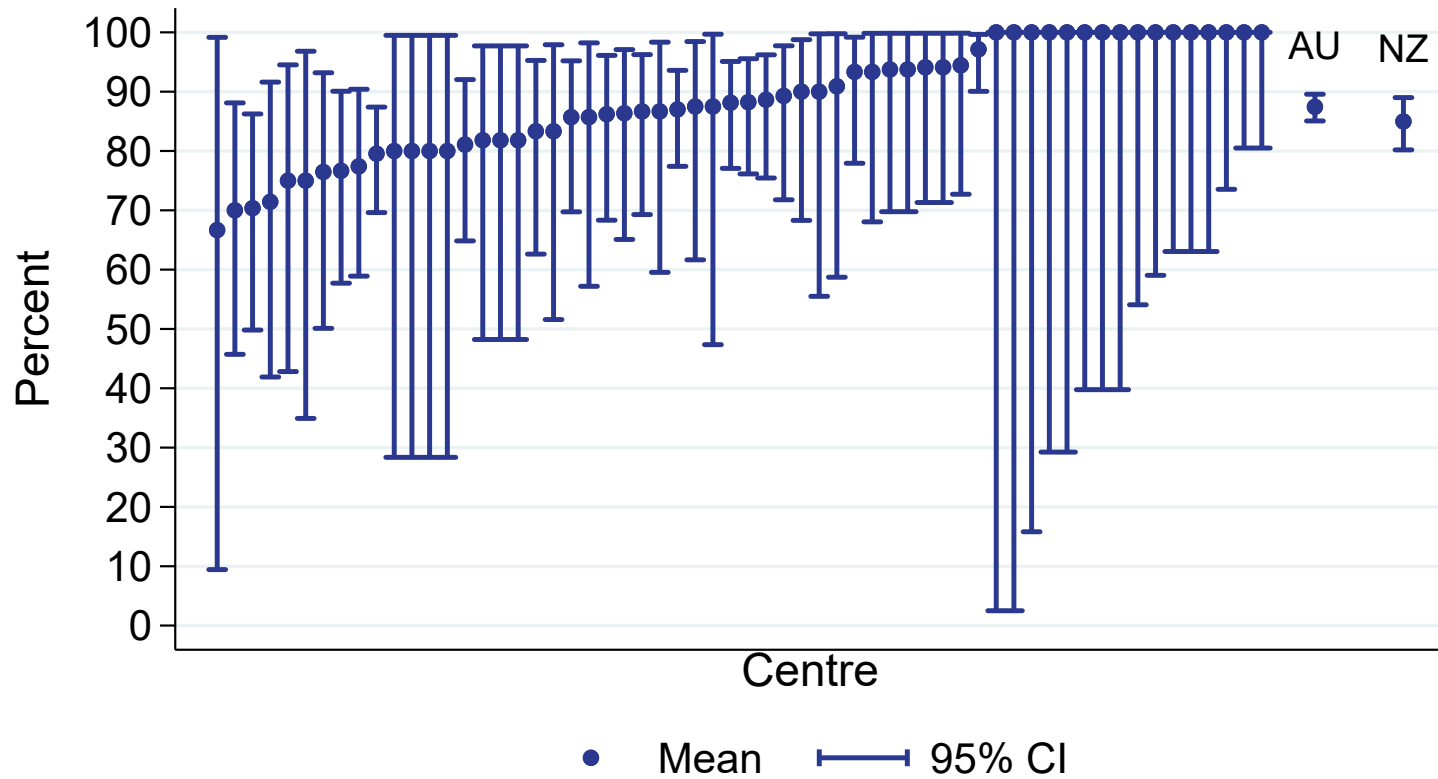
Centre	90-day PD Patients	Started KRT with PD	Did not start KRT with PD	% starting with PD (95 % CI)	Early Referral	% of Early Referrals starting with PD
Bendigo Hospital	16	15	1	94 (70-100)	14	100 (77-100)
Eastern Health Integrated Renal Services	18	17	1	94 (73-100)	15	93 (68-100)
Monash Medical Centre	37	30	7	81 (65-92)	34	82 (65-93)
Northern Health Service Melbourne	11	10	1	91 (59-100)	8	88 (47-100)
St Vincent's Hospital Melbourne	24	20	4	83 (63-95)	19	89 (67-99)
The Royal Melbourne Hospital	30	23	7	77 (58-90)	28	75 (55-89)
University Hospital Geelong Barwon Health	8	8	0	100 (63-100)	8	100 (63-100)
Western Health Service	30	28	2	93 (78-99)	29	93 (77-99)
Tasmania	9	9	0	100 (66-100)	9	100 (66-100)
Launceston General Hospital	8	8	0	100 (63-100)	8	100 (63-100)
Royal Hobart Hospital	1	1	0	100 (2-100)	1	100 (2-100)
South Australia	55	48	7	87 (76-95)	52	88 (77-96)
Central Northern Adelaide Renal Service	44	39	5	89 (75-96)	43	88 (75-96)
Flinders Medical Centre	11	9	2	82 (48-98)	9	89 (52-100)
Northern Territory	20	18	2	90 (68-99)	17	94 (71-100)
Royal Darwin Hospital	20	18	2	90 (68-99)	17	94 (71-100)
Western Australia	88	69	19	78 (68-86)	61	82 (70-91)
Fiona Stanley Hospital	27	19	8	70 (50-86)	16	81 (54-96)
Royal Perth Hospital	30	26	4	87 (69-96)	19	84 (60-97)
Sir Charles Gairdner Hospital	31	24	7	77 (59-90)	26	81 (61-93)
New Zealand	273	232	41	85 (80-89)	251	88 (83-92)
Auckland City Hospital	15	14	1	93 (68-100)	14	93 (66-100)
Christchurch Hospital	17	13	4	76 (50-93)	16	75 (48-93)

continued on next page

continued from previous page

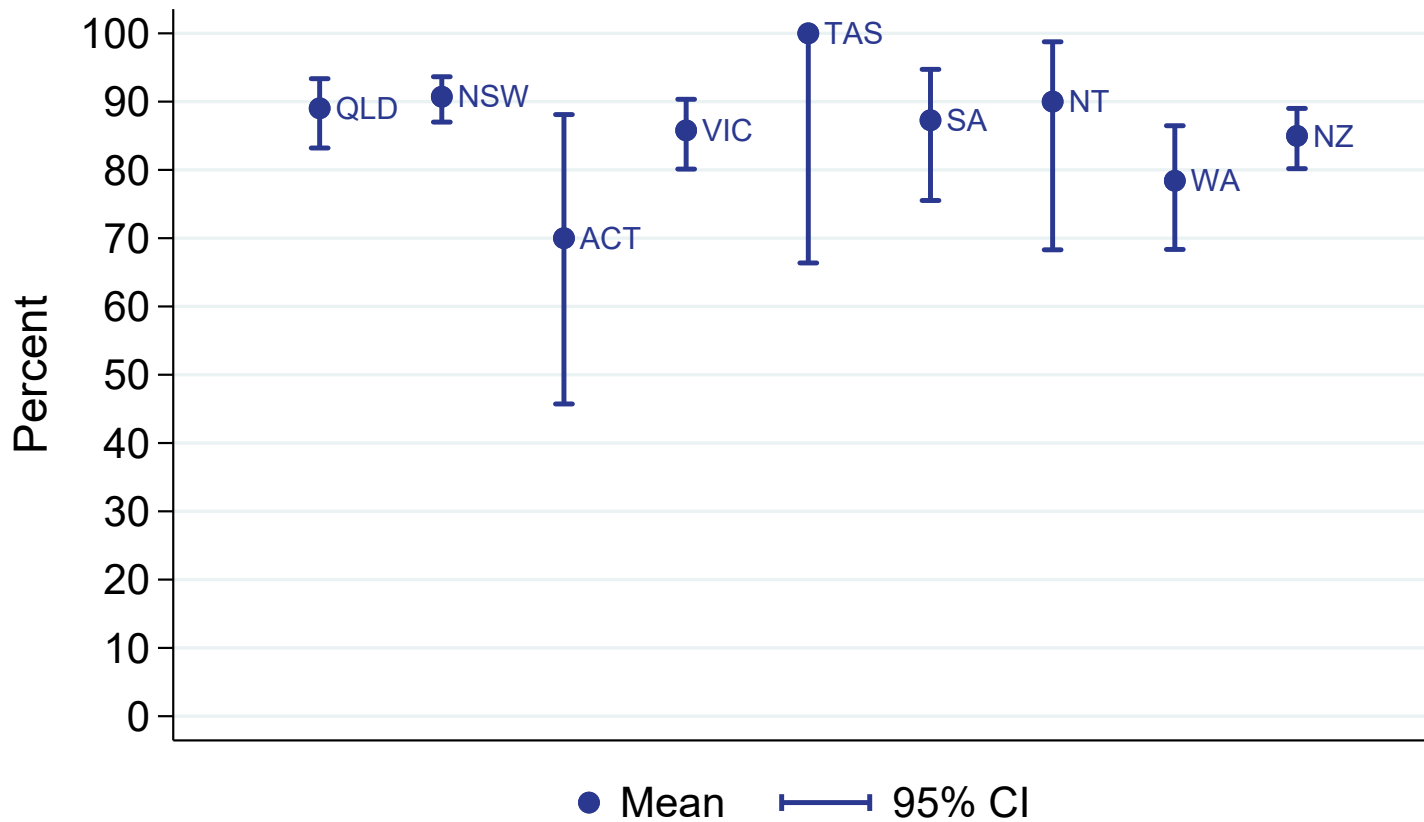
Centre	90-day PD Patients	Started KRT with PD	Did not start KRT with PD	% starting with PD (95 % CI)	Early Referral	% of Early Referrals starting with PD
Dunedin Hospital	14	10	4	71 (42-92)	12	75 (43-95)
Hawkes Bay Hospital	6	6	0	100 (54-100)	6	100 (54-100)
Middlemore Hospital	51	45	6	88 (76-96)	49	90 (78-97)
Palmerston North Hospital	14	12	2	86 (57-98)	11	100 (72-100)
Taranaki Hospital	12	12	0	100 (74-100)	11	100 (72-100)
Waikato Hospital	88	70	18	80 (70-87)	79	85 (75-92)
Waitemata Renal Service	17	16	1	94 (71-100)	15	100 (78-100)
Wellington Regional Hospital	28	25	3	89 (72-98)	28	89 (72-98)
Whangarei Hospital	11	9	2	82 (48-98)	10	80 (44-97)

PD catheter planning (PD at start)
 % of all PD patients at day 90, Adults
 01 January 2020 - 31 December 2020



All PD patients at day 90 including those late referred

PD catheter planning (PD at start)
% of all PD patients at day 90, Adults
By Jurisdiction, 2020



2.4.2 Paediatric

This table presents the numbers of patients on peritoneal dialysis at day 90 and the percentage starting kidney replacement therapy (KRT) with peritoneal dialysis during the observation window by Centre. Modality changes of less than 30 days are ignored for the determination of modality at day 90. Patients are included in this paediatric report if they were treated at a paediatric hospital. In rare cases when patients younger than 18 years are treated at an adult centre, they are included in the adult report. Any patients 18 years and older treated at a paediatric hospital are included in this report. Finally, the total of Early Referrals (patients seen more than 3 months before first treatment) and the percentage of Early Referrals starting with PD are also presented.

Centre	90-day PD Patients	Started KRT with PD	Did not start KRT with PD	% starting with PD (95 % CI)	Early Referral	% of Early Referrals starting with PD
Australia	20	17	3	85 (62-97)	17	82 (57-96)
Queensland	3	3	0	100 (29-100)	3	100 (29-100)
Child and Adolescent Renal Service	3	3	0	100 (29-100)	3	100 (29-100)
New South Wales	8	5	3	62 (24-91)	6	50 (12-88)
Sydney Children's Hospital	3	3	0	100 (29-100)	1	100 (2-100)
The Children's Hospital at Westmead	5	2	3	40 (5-85)	5	40 (5-85)
Victoria	7	7	0	100 (59-100)	6	100 (54-100)
Monash Children's Centre	2	2	0	100 (16-100)	2	100 (16-100)
Royal Children's Hospital	5	5	0	100 (48-100)	4	100 (40-100)
South Australia	2	2	0	100 (16-100)	2	100 (16-100)
Women's and Children's Hospital	2	2	0	100 (16-100)	2	100 (16-100)
New Zealand	4	4	0	100 (40-100)	2	100 (16-100)
Starship Children's Hospital	4	4	0	100 (40-100)	2	100 (16-100)

3 Transplantation Wait Listing

3.1 Adult

This table presents the numbers of patients aged <65 years who have received kidney replacement therapy (KRT) for 6 months, and the percentage who are transplanted or on the wait list within 6 months of KRT start during the observation window by Centre. The 6 month follow-up time means these patients commenced KRT between Jul 2019 and Jun 2020. Patients are excluded from this adult report if they were treated at a paediatric hospital. In rare cases when patients younger than 18 years are treated at an adult centre, they are included in this adult report. Any patients 18 years and older treated at a paediatric hospital are excluded from this report. This quality indicator is presented for Australia only as New Zealand transplant wait listing data is not currently available to ANZDATA.

Centre	Patients	Transplanted or on wait list within 6 months	Neither transplanted nor on wait list	% transplanted or on wait list within 6 months (95 % CI)
Australia	1767	339	1428	19 (17-21)
Queensland	372	64	308	17 (14-21)
Bundaberg Hospital	6	1	5	17 (0-64)
Cairns Hospital	60	7	53	12 (5-23)
Chermside Dialysis Centre	3	1	2	33 (1-91)
Gold Coast University Hospital	31	3	28	10 (2-26)
Henry Dalziel Dialysis Clinic - Greenslopes	7	1	6	14 (0-58)
Hervey Bay Hospital	6	1	5	17 (0-64)
John Flynn Private Hospital	2	1	1	50 (1-99)
Mackay Base Hospital	13	2	11	15 (2-45)
Mater Hospital, Brisbane	11	2	9	18 (2-52)
Mater Hospital, Townsville	1	0	1	0 (0-98)
Nambour Selangor Private Hospital	1	0	1	0 (0-98)
North Lakes Dialysis Centre	1	1	0	100 (2-100)
Pindara Renal Unit	1	0	1	0 (0-98)
Princess Alexandra Hospital	90	15	75	17 (10-26)
Rockhampton Hospital	13	2	11	15 (2-45)

continued on next page

continued from previous page

Centre	Patients	Transplanted or on wait list within 6 months	Neither transplanted nor on wait list	% transplanted or on wait list within 6 months (95 % CI)
Royal Brisbane and Women's Hospital	50	13	37	26 (15-40)
St Andrew's Ipswich Private Hospital	1	0	1	0 (0-98)
St Andrew's Toowoomba B.Braun'S Dialysis Clinic	1	0	1	0 (0-98)
Sunshine Coast University Hospital	21	9	12	43 (22-66)
Sunshine Coast University Private Hospital	1	0	1	0 (0-98)
The Wesley Hospital Brisbane	5	1	4	20 (0-72)
Toowoomba Hospital	18	3	15	17 (4-41)
Townsville University Hospital	29	1	28	3 (0-18)
New South Wales	495	92	403	19 (15-22)
Bathurst Base Hospital	2	0	2	0 (0-84)
Coffs Harbour Hospital	6	2	4	33 (4-78)
Dubbo Base Hospital	2	0	2	0 (0-84)
Gosford Hospital	20	1	19	5 (0-25)
John Hunter Hospital	33	4	29	12 (3-28)
Lismore Base Hospital	13	4	9	31 (9-61)
Liverpool Private Dialysis Centre	6	2	4	33 (4-78)
Manning Rural Referral Hospital	7	0	7	0 (0-41)
Mayo Private Hospital	1	0	1	0 (0-98)
Nepean Hospital	27	1	26	4 (0-19)
Orange Health Service	7	0	7	0 (0-41)
Port Macquarie Base Hospital	2	0	2	0 (0-84)
Royal North Shore Hospital	37	15	22	41 (25-58)
South West Sydney Renal Service	82	4	78	5 (1-12)
St George Hospital	26	11	15	42 (23-63)
St Vincent's Hospital Sydney	20	7	13	35 (15-59)
Statewide Renal Services	53	23	30	43 (30-58)
<i>Concord Repatriation General Hospital</i>	<i>15</i>	<i>6</i>	<i>9</i>	<i>40 (16-68)</i>

continued on next page

continued from previous page

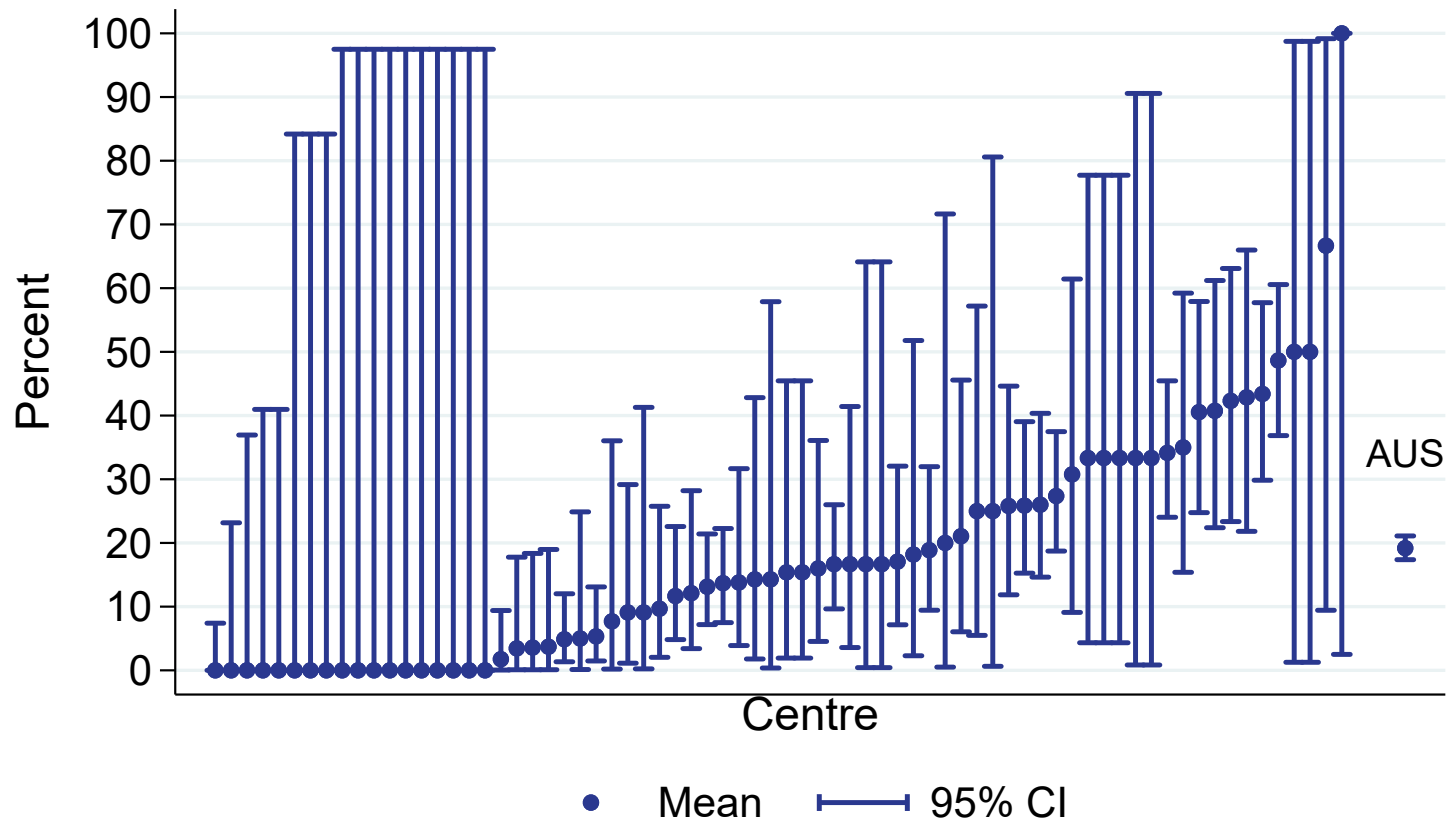
Centre	Patients	Transplanted or on wait list within 6 months	Neither transplanted nor on wait list	% transplanted or on wait list within 6 months (95 % CI)
<i>Griffith Base Hospital</i>	<i>2</i>	<i>0</i>	<i>2</i>	<i>0 (0-84)</i>
<i>Royal Prince Alfred Hospital</i>	<i>26</i>	<i>17</i>	<i>9</i>	<i>65 (44-83)</i>
<i>Wagga Wagga Base Hospital</i>	<i>10</i>	<i>0</i>	<i>10</i>	<i>0 (0-31)</i>
Sydney Adventist Hospital	1	0	1	0 (0-98)
Tamworth Hospital	11	1	10	9 (0-41)
The Prince of Wales Hospital	14	2	12	14 (2-43)
The Tweed Hospital	8	0	8	0 (0-37)
Westmead Hospital	95	13	82	14 (7-22)
Wollongong Hospital	22	2	20	9 (1-29)
Australian Capital Territory	30	2	28	7 (1-22)
Access Nephrology	2	1	1	50 (1-99)
Canberra Hospital	28	1	27	4 (0-18)
Victoria	403	113	290	28 (24-33)
Alfred Hospital	25	4	21	16 (5-36)
Austin Hospital	27	11	16	41 (22-61)
Bendigo Hospital	14	0	14	0 (0-23)
Eastern Health Integrated Renal Services	31	8	23	26 (12-45)
Epworth Eastern Hospital	3	1	2	33 (1-91)
Epworth Richmond Hospital	1	0	1	0 (0-98)
Forest Hill Dialysis Centre	1	0	1	0 (0-98)
Malvern Dialysis Centre	4	1	3	25 (1-81)
Monash Medical Centre	95	26	69	27 (19-37)
Northern Health Service Melbourne	12	3	9	25 (5-57)
St Vincent's Hospital Melbourne	41	7	34	17 (7-32)
Sunshine Private Dialysis Centre Fresenius	3	2	1	67 (9-99)
The Royal Melbourne Hospital	74	36	38	49 (37-61)

continued on next page

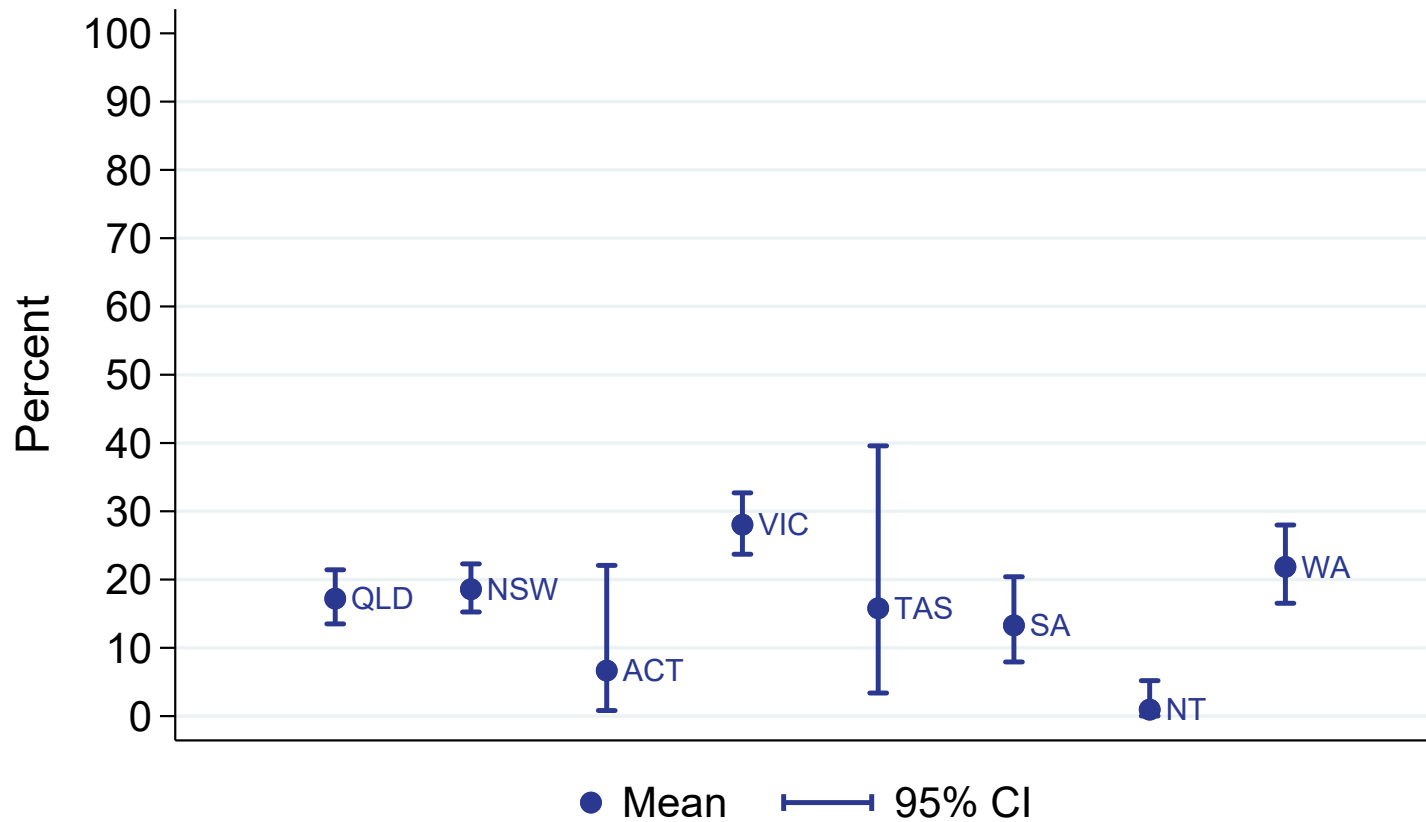
continued from previous page

Centre	Patients	Transplanted or on wait list within 6 months	Neither transplanted nor on wait list	% transplanted or on wait list within 6 months (95 % CI)
University Hospital Geelong Barwon Health	19	4	15	21 (6-46)
Western Health Service	53	10	43	19 (9-32)
Tasmania	19	3	16	16 (3-40)
Launceston General Hospital	13	1	12	8 (0-36)
Royal Hobart Hospital	6	2	4	33 (4-78)
South Australia	128	17	111	13 (8-20)
Central Northern Adelaide Renal Service	99	13	86	13 (7-21)
Flinders Medical Centre	29	4	25	14 (4-32)
Northern Territory	105	1	104	1 (0-5)
Alice Springs Hospital	48	0	48	0 (0-7)
Royal Darwin Hospital	57	1	56	2 (0-9)
Western Australia	215	47	168	22 (17-28)
Fiona Stanley Hospital	82	28	54	34 (24-45)
Royal Perth Hospital	75	4	71	5 (1-13)
Sir Charles Gairdner Hospital	58	15	43	26 (15-39)

Transplantation wait listing (had a tx or on wl within 6 months)
% of all new adult patients aged <65 years
Jul 2019 - Jun 2020



Transplantation wait listing (had a tx or on wl within 6 months)
% of all new adult patients aged <65 years
By Jurisdiction, Jul 2019 - Jun 2020



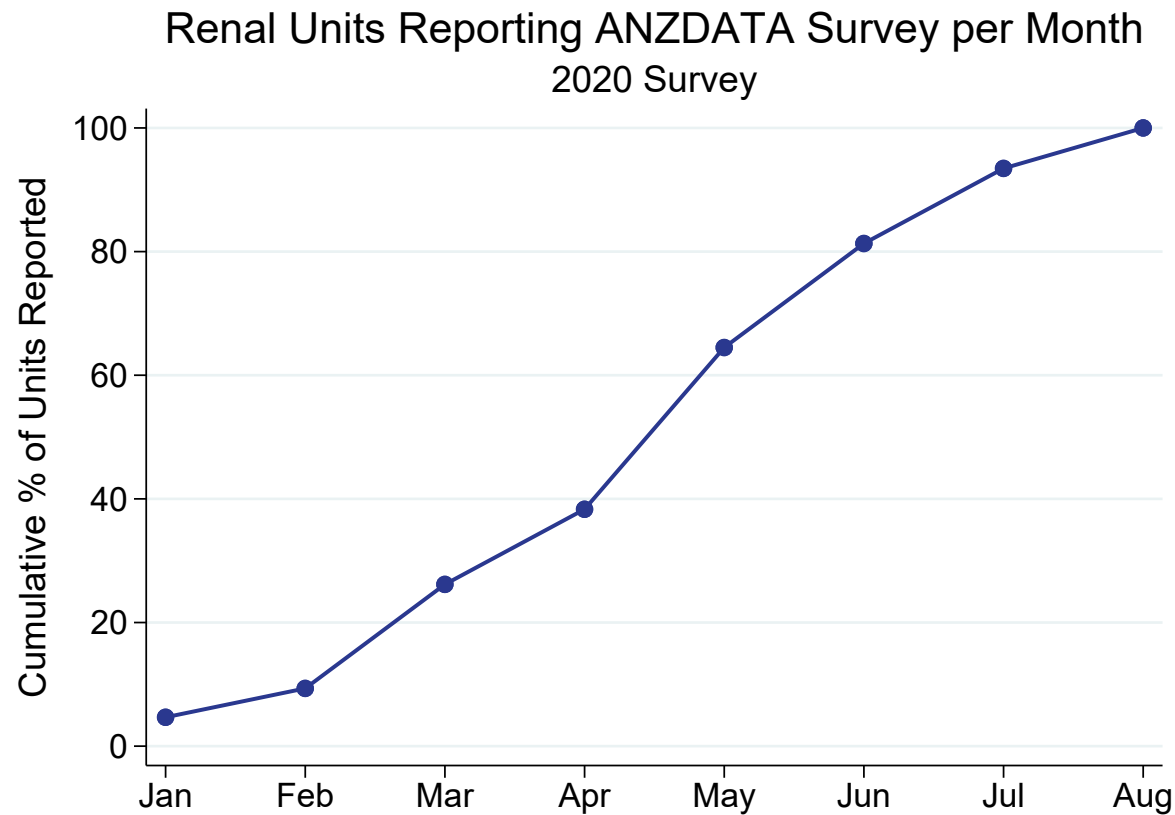
3.2 Paediatric

This table presents the numbers of patients aged ≥ 2 years who have received kidney replacement therapy (KRT) for 6 months, and the percentage who are transplanted or on the wait list within 6 months of KRT start during the observation window by Centre. The 6 month follow-up time means these patients commenced KRT between Jul 2019 and Jun 2020. Patients are included in this paediatric report if they were treated at a paediatric hospital. In rare cases when patients younger than 18 years are treated at an adult centre, they are included in the adult report. Any patients 18 years and older treated at a paediatric hospital are included in this report. This quality indicator is presented for Australia only as New Zealand transplant wait listing data is not currently available to ANZDATA.

Centre	Patients	Transplanted or on wait list within 6 months	Neither transplanted nor on wait list	% transplanted or on wait list within 6 months (95 % CI)
Australia	29	15	14	52 (33-71)
Queensland	6	3	3	50 (12-88)
Child and Adolescent Renal Service	6	3	3	50 (12-88)
New South Wales	10	5	5	50 (19-81)
Sydney Children's Hospital	4	2	2	50 (7-93)
The Children's Hospital at Westmead	6	3	3	50 (12-88)
Victoria	10	7	3	70 (35-93)
Monash Children's Centre	2	0	2	0 (0-84)
Royal Children's Hospital	8	7	1	88 (47-100)
South Australia	3	0	3	0 (0-71)
Women's and Children's Hospital	3	0	3	0 (0-71)

4 ANZDATA annual data survey timeliness

This figure shows the cumulative percentage of renal units that returned their annual ANZDATA survey each month following 31 December 2020. The date of survey return is the date ANZDATA received notification from the unit that their response was complete. Following this date, validation of data is required prior to the data being finalised.



This table presents the month of annual ANZDATA survey return by each renal unit following 31 December 2020.

Centre	Month of return
Queensland	
Bundaberg Hospital	Jan
Cairns Hospital	Apr
Cairns Private Hospital	Mar
Chermside Dialysis Centre	Jun
Child and Adolescent Renal Service	May
Gold Coast Private Hospital	Aug
Gold Coast University Hospital	Jul
Henry Dalziel Dialysis Clinic - Greenslopes	Mar
Hervey Bay Hospital	Mar
Ipswich Hospital	Apr
John Flynn Private Hospital	Jun
Mackay Base Hospital	Feb
Mater Hospital, Brisbane	Apr
Mater Hospital, Townsville	May
Mount Isa Base Hospital	May
Nambour Selangor Private Hospital	May
North Lakes Dialysis Centre	Mar
Pindara Renal Unit	Jul
Princess Alexandra Hospital	Feb
Queensland Kidney Transplant Service	Feb
Rockhampton Hospital	Aug
Royal Brisbane and Women's Hospital	Jul
St Andrew's Ipswich Private Hospital	May
St Andrew's Toowoomba B.Braun's Dialysis Clinic	Jul
Sunshine Coast University Hospital	Apr
Sunshine Coast University Private Hospital	Mar
The Wesley Hospital Brisbane	Aug
Thursday Island Hospital	Mar

continued on next page

continued from previous page

Centre	Month of return
Toowoomba Hospital	Mar
Townsville University Hospital	May
New South Wales	
Bathurst Base Hospital	May
Coffs Harbour Hospital	Jun
Concord Repatriation General Hospital	May
Dubbo Base Hospital	May
Gosford Hospital	May
Griffith Base Hospital	Aug
John Hunter Hospital	May
Lismore Base Hospital	Apr
Liverpool Private Dialysis Centre	Apr
Manning Rural Referral Hospital	Jun
Mater Hospital, North Sydney	May
Mayo Private Hospital	May
Nepean Hospital	Jul
Newcastle Dialysis Centre	Apr
Orange Health Service	May
Port Macquarie Base Hospital	Jun
Port Macquarie Private Hospital	Jun
Royal North Shore Hospital	May
Royal Prince Alfred Hospital	Jun
South West Sydney Renal Service	Jul
St George Hospital	Mar
St Vincent's Hospital Sydney	May
St Vincent's Lismore Private Dialysis Centre	Jul
Sydney Adventist Hospital	Feb
Sydney Children's Hospital	Jan
Tamworth Hospital	May
The Children's Hospital at Westmead	Jul

continued on next page

continued from previous page

Centre	Month of return
The Prince of Wales Hospital	May
The Tweed Hospital	Mar
Wagga Wagga Base Hospital	Jun
Westmead Hospital	Jul
Wollongong Hospital	Jun
Australian Capital Territory	
Access Nephrology	Apr
Canberra Hospital	Mar
Victoria	
Alfred Hospital	Jul
Austin Hospital	Jun
Bendigo Hospital	Mar
Diamond Valley B.Braun Renal Care Centre	Mar
Eastern Health Integrated Renal Services	Jul
Epworth Eastern Hospital	Jan
Epworth Geelong Hospital	Mar
Epworth Richmond Hospital	May
Forest Hill Dialysis Centre	Jan
Malvern Dialysis Centre	Feb
Monash Children's Centre	Mar
Monash Medical Centre	Jun
North Melbourne B.Braun Renal Care Centre	Apr
Northern Health Service Melbourne	May
Royal Children's Hospital	May
St Vincent's Hospital Melbourne	Mar
Sunshine Private Dialysis Centre Fresenius	May
The Royal Melbourne Hospital	Apr
University Hospital Geelong Barwon Health	May
Western Health Service	Jul

continued on next page

continued from previous page

Centre	Month of return
Tasmania	
Launceston General Hospital	May
Royal Hobart Hospital	Mar
South Australia	
Central Northern Adelaide Renal Service	May
Flinders Medical Centre	Apr
Women's and Children's Hospital	Jun
Northern Territory	
Alice Springs Hospital	Jun
Royal Darwin Hospital	Jun
Western Australia	
Fiona Stanley Hospital	Aug
Perth Children's Hospital	May
Royal Perth Hospital	Aug
Sir Charles Gairdner Hospital	Jul
New Zealand	
Auckland City Hospital	Jun
Christchurch Hospital	Jun
Dunedin Hospital	Mar
Hawkes Bay Hospital	Apr
Middlemore Hospital	May
Palmerston North Hospital	Aug
Starship Children's Hospital	Jan
Taranaki Hospital	Jun
Waikato Hospital	May
Waitemata Renal Service	Jun

continued on next page

continued from previous page

Centre	Month of return
Wellington Regional Hospital	Apr
Whangarei Hospital	Mar

5 Kidney Replacement Therapy (KRT) Modality

5.1 Incident Modality

5.1.1 Adult

This table presents the numbers (N) of incident kidney replacement therapy (KRT) patients during the observation window by modality at commencement and centre. Modality is categorised as pre-emptive kidney transplant (TX), peritoneal dialysis (PD), home haemodialysis including community house haemodialysis (HHD*) and facility haemodialysis (FacHD). Also presented are the percentages (%) of each modality out of the total incident KRT cohort. Patients are excluded from this adult report if they were treated at a paediatric hospital. In rare cases when patients younger than 18 years are treated at an adult centre, they are included in this adult report. Any patients 18 years and older treated at a paediatric hospital are excluded from this report.

Centre	N KRT	N TX	% TX	N PD	% PD	N HHD*	% HHD*	N FacHD	% FacHD
Australia	3226	78	2	873	27	61	2	2214	69
Queensland	657	6	1	165	25	11	2	475	72
Bundaberg Hospital	18	0	0	4	22	0	0	14	78
Cairns Hospital	70	0	0	14	20	0	0	56	80
Cairns Private Hospital	5	0	0	0	0	0	0	5	100
Chermside Dialysis Centre	13	0	0	0	0	0	0	13	100
Gold Coast Private Hospital	10	0	0	0	0	0	0	10	100
Gold Coast University Hospital	55	0	0	18	33	1	2	36	65
Henry Dalziel Dialysis Clinic - Greenslopes	27	0	0	0	0	0	0	27	100
Hervey Bay Hospital	10	0	0	3	30	0	0	7	70
Ipswich Hospital	6	0	0	0	0	0	0	6	100
John Flynn Private Hospital	11	0	0	0	0	0	0	11	100
Mackay Base Hospital	28	0	0	4	14	0	0	24	86
Mater Hospital, Brisbane	16	1	6	0	0	0	0	15	94
Mater Hospital, Townsville	7	0	0	0	0	0	0	7	100
Nambour Selangor Private Hospital	1	0	0	0	0	0	0	1	100
North Lakes Dialysis Centre	6	0	0	0	0	0	0	6	100
Pindara Renal Unit	10	0	0	0	0	0	0	10	100
Princess Alexandra Hospital	135	1	1	67	50	10	7	57	42

continued on next page

continued from previous page

Centre	N KRT	N TX	% TX	N PD	% PD	N HHD*	% HHD*	N FacHD	% FacHD
Rockhampton Hospital	11	0	0	0	0	0	0	11	100
Royal Brisbane and Women's Hospital	82	2	2	32	39	0	0	48	59
St Andrew's Ipswich Private Hospital	9	0	0	0	0	0	0	9	100
St Andrew's Toowoomba B.Braun'S Dialysis Clinic	3	0	0	0	0	0	0	3	100
Sunshine Coast University Hospital	40	1	2	5	12	0	0	34	85
Sunshine Coast University Private Hospital	3	0	0	0	0	0	0	3	100
The Wesley Hospital Brisbane	15	1	7	0	0	0	0	14	93
Thursday Island Hospital	1	0	0	0	0	0	0	1	100
Toowoomba Hospital	32	0	0	9	28	0	0	23	72
Townsville University Hospital	33	0	0	9	27	0	0	24	73
New South Wales	964	26	3	322	33	35	4	581	60
Bathurst Base Hospital	2	0	0	0	0	0	0	2	100
Coffs Harbour Hospital	17	1	6	1	6	0	0	15	88
Dubbo Base Hospital	15	0	0	5	33	0	0	10	67
Gosford Hospital	48	0	0	12	25	0	0	36	75
John Hunter Hospital	60	1	2	18	30	3	5	38	63
Lismore Base Hospital	16	0	0	2	12	0	0	14	88
Liverpool Private Dialysis Centre	8	0	0	0	0	0	0	8	100
Manning Rural Referral Hospital	9	0	0	4	44	0	0	5	56
Mater Hospital, North Sydney	1	0	0	0	0	0	0	1	100
Mayo Private Hospital	6	0	0	0	0	0	0	6	100
Nepean Hospital	63	1	2	20	32	3	5	39	62
Newcastle Dialysis Centre	5	0	0	0	0	0	0	5	100
Orange Health Service	9	0	0	3	33	0	0	6	67
Port Macquarie Base Hospital	15	0	0	2	13	0	0	13	87
Port Macquarie Private Hospital	2	0	0	0	0	0	0	2	100
Royal North Shore Hospital	63	4	6	20	32	3	5	36	57
South West Sydney Renal Service	151	1	1	73	48	8	5	69	46
St George Hospital	46	2	4	15	33	1	2	28	61
St Vincent's Hospital Sydney	29	2	7	5	17	0	0	22	76

continued on next page

continued from previous page

Centre	N KRT	N TX	% TX	N PD	% PD	N HHD*	% HHD*	N FacHD	% FacHD
St Vincent's Lismore Private Dialysis Centre	1	0	0	0	0	0	0	1	100
Statewide Renal Services	111	7	6	30	27	1	1	73	66
<i>Concord Repatriation General Hospital</i>	<i>39</i>	<i>2</i>	<i>5</i>	<i>12</i>	<i>31</i>	<i>0</i>	<i>0</i>	<i>25</i>	<i>64</i>
<i>Griffith Base Hospital</i>	<i>3</i>	<i>0</i>	<i>0</i>	<i>0</i>	<i>0</i>	<i>0</i>	<i>0</i>	<i>3</i>	<i>100</i>
<i>Royal Prince Alfred Hospital</i>	<i>44</i>	<i>5</i>	<i>11</i>	<i>15</i>	<i>34</i>	<i>0</i>	<i>0</i>	<i>24</i>	<i>55</i>
<i>Wagga Wagga Base Hospital</i>	<i>25</i>	<i>0</i>	<i>0</i>	<i>3</i>	<i>12</i>	<i>1</i>	<i>4</i>	<i>21</i>	<i>84</i>
Sydney Adventist Hospital	12	0	0	0	0	0	0	12	100
Tamworth Hospital	16	0	0	7	44	0	0	9	56
The Prince of Wales Hospital	28	2	7	9	32	0	0	17	61
The Tweed Hospital	20	0	0	6	30	0	0	14	70
Westmead Hospital	157	4	3	75	48	14	9	64	41
Wollongong Hospital	54	1	2	15	28	2	4	36	67
Australian Capital Territory	58	0	0	15	26	1	2	42	72
Access Nephrology	7	0	0	0	0	0	0	7	100
Canberra Hospital	51	0	0	15	29	1	2	35	69
Victoria	795	27	3	197	25	6	1	565	71
Alfred Hospital	57	8	14	13	23	0	0	36	63
Austin Hospital	66	8	12	10	15	0	0	48	73
Bendigo Hospital	33	0	0	16	48	0	0	17	52
Diamond Valley B.Braun Renal Care Centre	6	0	0	0	0	0	0	6	100
Eastern Health Integrated Renal Services	51	0	0	20	39	0	0	31	61
Epworth Eastern Hospital	9	0	0	0	0	0	0	9	100
Epworth Geelong Hospital	3	0	0	0	0	0	0	3	100
Epworth Richmond Hospital	15	0	0	0	0	0	0	15	100
Forest Hill Dialysis Centre	12	0	0	0	0	0	0	12	100
Malvern Dialysis Centre	19	0	0	0	0	0	0	19	100
Monash Medical Centre	179	9	5	41	23	2	1	127	71
Northern Health Service Melbourne	38	0	0	11	29	1	3	26	68
St Vincent's Hospital Melbourne	65	0	0	24	37	0	0	41	63

continued on next page

continued from previous page

Centre	N KRT	N TX	% TX	N PD	% PD	N HHD*	% HHD*	N FacHD	% FacHD
Sunshine Private Dialysis Centre Fresenius	9	0	0	0	0	0	0	9	100
The Royal Melbourne Hospital	111	2	2	27	24	1	1	81	73
University Hospital Geelong Barwon Health	39	0	0	9	23	0	0	30	77
Western Health Service	83	0	0	26	31	2	2	55	66
Tasmania	41	0	0	8	20	0	0	33	80
Launceston General Hospital	26	0	0	7	27	0	0	19	73
Royal Hobart Hospital	15	0	0	1	7	0	0	14	93
South Australia	238	7	3	68	29	0	0	163	68
Central Northern Adelaide Renal Service	179	6	3	57	32	0	0	116	65
Flinders Medical Centre	59	1	2	11	19	0	0	47	80
Northern Territory	101	2	2	15	15	2	2	82	81
Alice Springs Hospital	53	0	0	0	0	0	0	53	100
Royal Darwin Hospital	48	2	4	15	31	2	4	29	60
Western Australia	372	10	3	83	22	6	2	273	73
Fiona Stanley Hospital	144	3	2	22	15	0	0	119	83
Royal Perth Hospital	125	2	2	31	25	2	2	90	72
Sir Charles Gairdner Hospital	103	5	5	30	29	4	4	64	62
New Zealand	704	42	6	264	38	12	2	386	55
Auckland City Hospital	78	8	10	14	18	3	4	53	68
Christchurch Hospital	52	8	15	20	38	0	0	24	46
Dunedin Hospital	30	3	10	16	53	0	0	11	37
Hawkes Bay Hospital	31	1	3	13	42	0	0	17	55
Middlemore Hospital	136	6	4	44	32	4	3	82	60
Palmerston North Hospital	42	0	0	14	33	1	2	27	64
Taranaki Hospital	18	0	0	10	56	0	0	8	44
Waikato Hospital	144	3	2	76	53	1	1	64	44

continued on next page

continued from previous page

Centre	N KRT	N TX	% TX	N PD	% PD	N HHD*	% HHD*	N FacHD	% FacHD
Waitemata Renal Service	62	7	11	18	29	1	2	36	58
Wellington Regional Hospital	76	4	5	28	37	2	3	42	55
Whangarei Hospital	35	2	6	11	31	0	0	22	63

5.1.2 Paediatric

This table presents the numbers (N) of incident kidney replacement therapy (KRT) patients during the observation window by modality at commencement and centre. Modality is categorised as pre-emptive kidney transplant (TX), peritoneal dialysis (PD), home haemodialysis including community house haemodialysis (HHD*) and facility haemodialysis (FacHD). Also presented are the percentages (%) of each modality out of the total incident KRT cohort. Patients are included in this paediatric report if they were treated at a paediatric hospital. In rare cases when patients younger than 18 years are treated at an adult centre, they are included in the adult report. Any patients 18 years and older treated at a paediatric hospital are included in this report.

Centre	N KRT	N TX	% TX	N PD	% PD	N HHD*	% HHD*	N FacHD	% FacHD
Australia	33	7	21	20	61	0	0	6	18
Queensland	7	2	29	5	71	0	0	0	0
Child and Adolescent Renal Service	7	2	29	5	71	0	0	0	0
New South Wales	11	1	9	5	45	0	0	5	45
Sydney Children's Hospital	3	0	0	3	100	0	0	0	0
The Children's Hospital at Westmead	8	1	12	2	25	0	0	5	62
Victoria	12	4	33	7	58	0	0	1	8
Monash Children's Centre	2	0	0	2	100	0	0	0	0
Royal Children's Hospital	10	4	40	5	50	0	0	1	10
South Australia	2	0	0	2	100	0	0	0	0
Women's and Children's Hospital	2	0	0	2	100	0	0	0	0
Western Australia	1	0	0	1	100	0	0	0	0
Perth Children's Hospital	1	0	0	1	100	0	0	0	0
New Zealand	6	2	33	4	67	0	0	0	0
Starship Children's Hospital	6	2	33	4	67	0	0	0	0

5.2 Prevalent Modality

5.2.1 Adult

This table presents the numbers (N) of prevalent kidney replacement therapy (KRT) patients at the end of the observation window by modality and centre. Modality is categorised as functioning kidney transplant (TX), peritoneal dialysis (PD), home haemodialysis including community house haemodialysis (HHD*) and facility haemodialysis (FacHD). Also presented are the percentages (%) of each modality out of the total prevalent KRT cohort. Patients are excluded from this adult report if they were treated at a paediatric hospital. In rare cases when patients younger than 18 years are treated at an adult centre, they are included in this adult report. Any patients 18 years and older treated at a paediatric hospital are excluded from this report.

Centre	N KRT	N TX	% TX	N PD	% PD	N HHD*	% HHD*	N FacHD	% FacHD
Australia	27371	12864	47	2510	9	1133	4	10864	40
Queensland	5317	2404	45	458	9	244	5	2211	42
Bundaberg Hospital	134	65	49	11	8	2	1	56	42
Cairns Hospital	459	113	25	39	8	28	6	279	61
Cairns Private Hospital	20	0	0	0	0	0	0	20	100
Chermside Dialysis Centre	67	22	33	0	0	0	0	45	67
Gold Coast Private Hospital	44	0	0	0	0	0	0	44	100
Gold Coast University Hospital	452	232	51	40	9	22	5	158	35
Henry Dalziel Dialysis Clinic - Greenslopes	149	60	40	0	0	0	0	89	60
Hervey Bay Hospital	110	42	38	5	5	3	3	60	55
Ipswich Hospital	63	10	16	0	0	0	0	53	84
John Flynn Private Hospital	100	67	67	0	0	0	0	33	33
Mackay Base Hospital	160	62	39	18	11	7	4	73	46
Mater Hospital, Brisbane	94	25	27	0	0	0	0	69	73
Mater Hospital, Townsville	29	0	0	0	0	0	0	29	100
Mount Isa Base Hospital	49	10	20	0	0	0	0	39	80
Nambour Selangor Private Hospital	16	0	0	0	0	0	0	16	100
North Lakes Dialysis Centre	36	0	0	0	0	0	0	36	100
Pindara Renal Unit	21	0	0	0	0	0	0	21	100
Princess Alexandra Hospital	529	0	0	173	33	82	16	274	52

continued on next page

continued from previous page

Centre	N KRT	N TX	% TX	N PD	% PD	N HHD*	% HHD*	N FacHD	% FacHD
Queensland Kidney Transplant Service	862	862	100	0	0	0	0	0	0
Rockhampton Hospital	181	74	41	16	9	5	3	86	48
Royal Brisbane and Women's Hospital	575	207	36	72	13	40	7	256	45
St Andrew's Ipswich Private Hospital	29	0	0	0	0	0	0	29	100
St Andrew's Toowoomba B.Braun'S Dialysis Clinic	12	2	17	0	0	0	0	10	83
Sunshine Coast University Hospital	358	220	61	9	3	14	4	115	32
Sunshine Coast University Private Hospital	22	0	0	0	0	0	0	22	100
The Wesley Hospital Brisbane	172	118	69	0	0	0	0	54	31
Thursday Island Hospital	16	0	0	0	0	0	0	16	100
Toowoomba Hospital	246	114	46	28	11	26	11	78	32
Townsville University Hospital	312	99	32	47	15	15	5	151	48
New South Wales	7978	3594	45	986	12	446	6	2952	37
Bathurst Base Hospital	34	14	41	0	0	0	0	20	59
Coffs Harbour Hospital	130	65	50	5	4	4	3	56	43
Dubbo Base Hospital	146	63	43	16	11	6	4	61	42
Gosford Hospital	312	124	40	26	8	14	4	148	47
John Hunter Hospital	618	362	59	62	10	25	4	169	27
Lismore Base Hospital	186	89	48	9	5	9	5	79	42
Liverpool Private Dialysis Centre	40	0	0	0	0	0	0	40	100
Manning Rural Referral Hospital	80	21	26	12	15	1	1	46	58
Mater Hospital, North Sydney	73	42	58	0	0	0	0	31	42
Mayo Private Hospital	21	1	5	0	0	0	0	20	95
Nepean Hospital	282	104	37	49	17	6	2	123	44
Newcastle Dialysis Centre	52	1	2	0	0	0	0	51	98
Orange Health Service	95	42	44	12	13	0	0	41	43
Port Macquarie Base Hospital	105	37	35	13	12	6	6	49	47
Port Macquarie Private Hospital	10	0	0	0	0	0	0	10	100
Royal North Shore Hospital	628	319	51	49	8	46	7	214	34
South West Sydney Renal Service	1087	410	38	216	20	74	7	387	36
St George Hospital	489	237	48	41	8	36	7	175	36

continued on next page

continued from previous page

Centre	N KRT	N TX	% TX	N PD	% PD	N HHD*	% HHD*	N FacHD	% FacHD
St Vincent's Hospital Sydney	242	125	52	18	7	22	9	77	32
St Vincent's Lismore Private Dialysis Centre	18	0	0	0	0	0	0	18	100
Statewide Renal Services	1077	547	51	107	10	69	6	354	33
<i>Concord Repatriation General Hospital</i>	<i>306</i>	<i>117</i>	<i>38</i>	<i>47</i>	<i>15</i>	<i>23</i>	<i>8</i>	<i>119</i>	<i>39</i>
<i>Griffith Base Hospital</i>	<i>51</i>	<i>18</i>	<i>35</i>	<i>2</i>	<i>4</i>	<i>0</i>	<i>0</i>	<i>31</i>	<i>61</i>
<i>Royal Prince Alfred Hospital</i>	<i>604</i>	<i>373</i>	<i>62</i>	<i>45</i>	<i>7</i>	<i>39</i>	<i>6</i>	<i>147</i>	<i>24</i>
<i>Wagga Wagga Base Hospital</i>	<i>116</i>	<i>39</i>	<i>34</i>	<i>13</i>	<i>11</i>	<i>7</i>	<i>6</i>	<i>57</i>	<i>49</i>
Sydney Adventist Hospital	45	0	0	0	0	0	0	45	100
Tamworth Hospital	164	73	45	22	13	4	2	65	40
The Prince of Wales Hospital	298	170	57	26	9	4	1	98	33
The Tweed Hospital	77	9	12	11	14	0	0	57	74
Westmead Hospital	1283	570	44	249	19	105	8	359	28
Wollongong Hospital	386	169	44	43	11	15	4	159	41
Australian Capital Territory	600	301	50	44	7	26	4	229	38
Access Nephrology	101	78	77	0	0	0	0	23	23
Canberra Hospital	499	223	45	44	9	26	5	206	41
Victoria	7166	3744	52	572	8	223	3	2627	37
Alfred Hospital	550	307	56	59	11	4	1	180	33
Austin Hospital	693	421	61	35	5	32	5	205	30
Bendigo Hospital	148	36	24	40	27	0	0	72	49
Diamond Valley B.Braun Renal Care Centre	54	0	0	0	0	0	0	54	100
Eastern Health Integrated Renal Services	429	183	43	45	10	13	3	188	44
Epworth Eastern Hospital	53	1	2	0	0	0	0	52	98
Epworth Geelong Hospital	20	1	5	0	0	0	0	19	95
Epworth Richmond Hospital	44	0	0	0	0	0	0	44	100
Forest Hill Dialysis Centre	63	0	0	0	0	0	0	63	100
Malvern Dialysis Centre	79	0	0	0	0	0	0	79	100
Monash Medical Centre	1678	996	59	109	6	74	4	499	30
North Melbourne B.Braun Renal Care Centre	26	0	0	0	0	0	0	26	100

continued on next page

continued from previous page

Centre	N KRT	N TX	% TX	N PD	% PD	N HHD*	% HHD*	N FacHD	% FacHD
Northern Health Service Melbourne	200	58	29	28	14	7	4	107	54
St Vincent's Hospital Melbourne	582	280	48	64	11	15	3	223	38
Sunshine Private Dialysis Centre Fresenius	25	0	0	0	0	0	0	25	100
The Royal Melbourne Hospital	1741	1206	69	87	5	34	2	414	24
University Hospital Geelong Barwon Health	324	158	49	26	8	30	9	110	34
Western Health Service	457	97	21	79	17	14	3	267	58
Tasmania	515	306	59	35	7	8	2	166	32
Launceston General Hospital	272	146	54	25	9	7	3	94	35
Royal Hobart Hospital	243	160	66	10	4	1	0	72	30
South Australia	2071	1100	53	136	7	28	1	807	39
Central Northern Adelaide Renal Service	1604	872	54	104	6	25	2	603	38
Flinders Medical Centre	467	228	49	32	7	3	1	204	44
Northern Territory	913	140	15	52	6	56	6	665	73
Alice Springs Hospital	438	44	10	7	2	18	4	369	84
Royal Darwin Hospital	475	96	20	45	9	38	8	296	62
Western Australia	2811	1275	45	227	8	102	4	1207	43
Fiona Stanley Hospital	1055	514	49	54	5	34	3	453	43
Royal Perth Hospital	826	276	33	78	9	34	4	438	53
Sir Charles Gairdner Hospital	930	485	52	95	10	34	4	316	34
New Zealand	5138	2149	42	841	16	388	8	1760	34
Auckland City Hospital	642	255	40	52	8	54	8	281	44
Christchurch Hospital	451	311	69	73	16	32	7	35	8
Dunedin Hospital	220	121	55	36	16	52	24	11	5
Hawkes Bay Hospital	195	90	46	27	14	9	5	69	35
Middlemore Hospital	932	262	28	155	17	76	8	439	47
Palmerston North Hospital	290	101	35	38	13	12	4	139	48

continued on next page

continued from previous page

Centre	N KRT	N TX	% TX	N PD	% PD	N HHD*	% HHD*	N FacHD	% FacHD
Taranaki Hospital	104	51	49	32	31	3	3	18	17
Waikato Hospital	858	283	33	254	30	68	8	253	29
Waitemata Renal Service	539	244	45	49	9	39	7	207	38
Wellington Regional Hospital	614	318	52	88	14	27	4	181	29
Whangarei Hospital	293	113	39	37	13	16	5	127	43

5.2.2 Paediatric

This table presents the numbers (N) of prevalent kidney replacement therapy (KRT) patients at the end of the observation window by modality and centre. Modality is categorised as functioning kidney transplant (TX), peritoneal dialysis (PD), home haemodialysis including community house haemodialysis (HHD*) and facility haemodialysis (FacHD). Also presented are the percentages (%) of each modality out of the total prevalent KRT cohort. Patients are included in this paediatric report if they were treated at a paediatric hospital. In rare cases when patients younger than 18 years are treated at an adult centre, they are included in the adult report. Any patients 18 years and older treated at a paediatric hospital are included in this report.

Centre	N KRT	N TX	% TX	N PD	% PD	N HHD*	% HHD*	N FacHD	% FacHD
Australia	313	266	85	34	11	0	0	13	4
Queensland	66	52	79	12	18	0	0	2	3
Child and Adolescent Renal Service	66	52	79	12	18	0	0	2	3
New South Wales	117	105	90	7	6	0	0	5	4
Sydney Children's Hospital	36	33	92	3	8	0	0	0	0
The Children's Hospital at Westmead	81	72	89	4	5	0	0	5	6
Victoria	87	74	85	9	10	0	0	4	5
Monash Children's Centre	22	15	68	4	18	0	0	3	14
Royal Children's Hospital	65	59	91	5	8	0	0	1	2
South Australia	20	16	80	4	20	0	0	0	0
Women's and Children's Hospital	20	16	80	4	20	0	0	0	0
Western Australia	23	19	83	2	9	0	0	2	9
Perth Children's Hospital	23	19	83	2	9	0	0	2	9
New Zealand	65	50	77	13	20	0	0	2	3
Starship Children's Hospital	65	50	77	13	20	0	0	2	3