

Quality Indicators

Annual Report

01 January 2021 - 31 December 2021

Analysis Database

PUBLISHED 12 December 2022 - REVISED 30 January 2024

This information is provided as it is reported to ANZDATA with no express or implied guarantee of accuracy or quality. The reporting arrangements provide additional information to units on quality indicators. Units should use these data to monitor clinical practice and outcomes.

Contents

1	Incidence of Peritonitis in Patients Treated with Peritoneal Dialysis	2
1.1	Adult	2
1.2	Paediatric	7
2	Dialysis Access Planning at Commencement of Dialysis	8
2.1	All Dialysis Access Planning	8
2.1.1	Adult	8
2.1.2	Paediatric	15
2.2	Vascular Access at First Haemodialysis	17
2.2.1	Adult	17
2.2.2	Paediatric	25
2.3	HD Vascular Access Planning	26
2.3.1	Adult	26
2.3.2	Paediatric	33
2.4	PD Catheter Planning	34
2.4.1	Adult	34
2.4.2	Paediatric	40
3	Transplantation Wait Listing	42
3.1	Adult	42
3.2	Paediatric	48
4	ANZDATA annual data survey timeliness	49
5	Kidney Replacement Therapy (KRT) Modality	55
5.1	Incident Modality	55
5.1.1	Adult	55
5.1.2	Paediatric	60
5.2	Prevalent Modality	61
5.2.1	Adult	61
5.2.2	Paediatric	66

1 Incidence of Peritonitis in Patients Treated with Peritoneal Dialysis

1.1 Adult

This table presents the total number of peritonitis episodes and patient exposure in years by Centre. Patient totals, exposure and peritonitis episodes were determined using the hospital at which the patient was receiving treatment at the time. So, if a patient transferred units during the observation period, the subsequent exposure and peritonitis episodes were allocated to the new unit. Months per episode (PM per Episode) is also reported. This should be interpreted as the average number of months between episodes of peritonitis; it can not be calculated if the peritonitis rate is zero. Patients are excluded from this adult report if they were treated at a paediatric hospital. In rare cases when patients younger than 18 years are treated at an adult centre, they are included in this adult report. Any patients 18 years and older treated at a paediatric hospital are excluded from this report. This quality indicator is presented for Australia only as New Zealand peritonitis episode data is reported through the New Zealand Peritoneal Dialysis Registry.

*Due to a revision of analysis data for the period 2020 to 2022, the rate of peritonitis has been updated in this report, superseding previously reported number of episodes and rates of peritonitis.

Centre	PD Patients	*No of Episodes	Person Years	*Rate (95% CI)	*PM per Episode (95% CI)
Australia	3708	653	2570.67	0.25 (0.23-0.27)	47.24 (43.75-51.08)
Queensland	682	138	458.49	0.30 (0.25-0.36)	39.87 (33.75-47.46)
Bundaberg Hospital	18	3	11.87	0.25 (0.05-0.74)	47.49 (16.25-230.26)
Cairns Hospital	52	24	37.59	0.64 (0.41-0.95)	18.80 (12.63-29.34)
Gold Coast University Hospital	67	9	46.79	0.19 (0.09-0.37)	62.39 (32.86-136.43)
Hervey Bay Hospital	14	3	9.01	0.33 (0.07-0.97)	36.03 (12.33-174.71)
Mackay Base Hospital	24	4	18.64	0.21 (0.06-0.55)	55.92 (21.84-205.23)
Princess Alexandra Hospital	254	50	161.37	0.31 (0.23-0.41)	38.73 (29.38-52.18)
Rockhampton Hospital	18	0	16.88	0.00 (0.00-0.22)	. (54.93-.)
Royal Brisbane and Women's Hospital	109	11	73.76	0.15 (0.07-0.27)	80.47 (44.97-161.19)
Sunshine Coast University Hospital	18	3	11.87	0.25 (0.05-0.74)	47.46 (16.24-230.15)
Toowoomba Hospital	44	9	28.44	0.32 (0.14-0.60)	37.92 (19.98-82.94)
Townsville University Hospital	64	22	42.27	0.52 (0.33-0.79)	23.05 (15.23-36.79)

continued on next page

continued from previous page

Centre	PD Patients	*No of Episodes	Person Years	*Rate (95% CI)	*PM per Episode (95% CI)
New South Wales	1408	271	1014.34	0.27 (0.24-0.30)	44.92 (39.87-50.78)
Coffs Harbour Hospital	4	0	3.47	0.00 (0.00-1.06)	. (11.30-.)
Dubbo Base Hospital	16	0	12.35	0.00 (0.00-0.30)	. (40.18-.)
Gosford Hospital	37	5	23.93	0.21 (0.07-0.49)	57.44 (24.61-176.89)
John Hunter Hospital	87	26	56.80	0.46 (0.30-0.67)	26.22 (17.89-40.14)
Lismore Base Hospital	17	4	10.42	0.38 (0.10-0.98)	31.27 (12.21-114.76)
Manning Rural Referral Hospital	19	4	11.39	0.35 (0.10-0.90)	34.18 (13.35-125.46)
Nepean Hospital	69	16	46.35	0.35 (0.20-0.56)	34.77 (21.41-60.82)
Orange Health Service	21	4	15.99	0.25 (0.07-0.64)	47.98 (18.74-176.08)
Port Macquarie Base Hospital	15	4	10.64	0.38 (0.10-0.96)	31.93 (12.47-117.20)
Royal North Shore Hospital	77	8	48.68	0.16 (0.07-0.32)	73.03 (37.06-169.15)
South West Sydney Renal Service	299	68	229.15	0.30 (0.23-0.38)	40.44 (31.90-52.07)
St George Hospital	59	6	40.65	0.15 (0.05-0.32)	81.30 (37.35-221.53)
St Vincent's Hospital Sydney	26	5	20.16	0.25 (0.08-0.58)	48.37 (20.73-148.98)
Statewide Renal Services	155	10	112.06	0.09 (0.04-0.16)	134.47 (73.12-280.42)
<i>Concord Repatriation General Hospital</i>	66	4	47.14	0.08 (0.02-0.22)	141.42 (55.23-519.04)
<i>Griffith Base Hospital</i>	6	0	4.36	0.00 (0.00-0.85)	. (14.18-.)
<i>Royal Prince Alfred Hospital</i>	63	5	48.21	0.10 (0.03-0.24)	115.70 (49.58-356.33)
<i>Wagga Wagga Base Hospital</i>	20	1	12.35	0.08 (0.00-0.45)	148.24 (26.61-5855.10)
Tamworth Hospital	34	7	24.35	0.29 (0.12-0.59)	41.74 (20.26-103.83)
The Prince of Wales Hospital	41	8	29.69	0.27 (0.12-0.53)	44.54 (22.61-103.17)
The Tweed Hospital	19	2	12.22	0.16 (0.02-0.59)	73.33 (20.30-605.51)
Westmead Hospital	348	87	256.97	0.34 (0.27-0.42)	35.44 (28.73-44.25)
Wollongong Hospital	65	7	49.03	0.14 (0.06-0.29)	84.06 (40.80-209.08)
Australian Capital Territory	59	7	40.12	0.17 (0.07-0.36)	68.78 (33.38-171.07)
Canberra Hospital	59	7	40.12	0.17 (0.07-0.36)	68.78 (33.38-171.07)
Victoria	842	94	593.53	0.16 (0.13-0.19)	75.77 (61.92-93.76)
Alfred Hospital	91	4	63.25	0.06 (0.02-0.16)	189.76 (74.11-696.44)

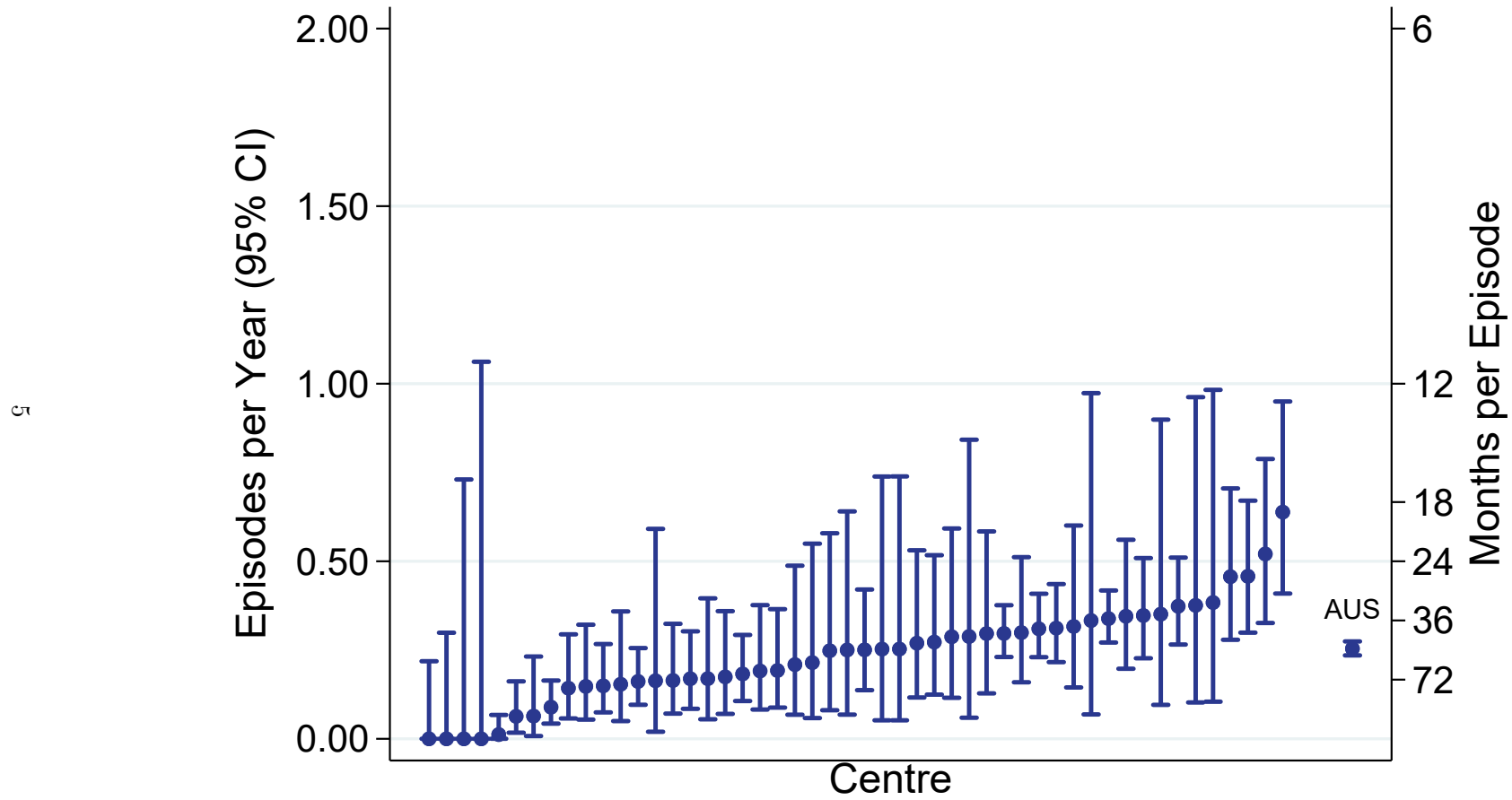
continued on next page

continued from previous page

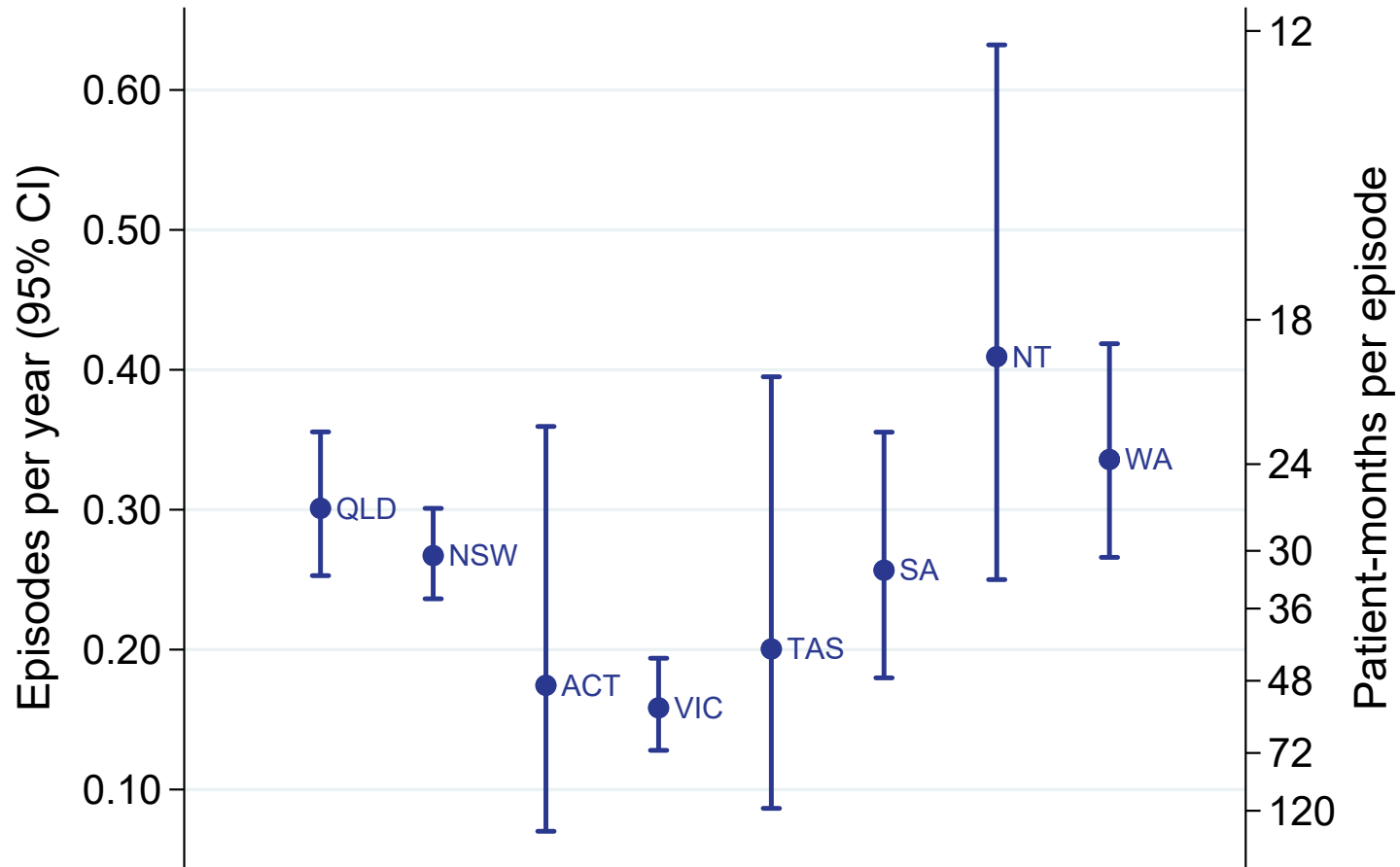
Centre	PD Patients	*No of Episodes	Person Years	*Rate (95% CI)	*PM per Episode (95% CI)
Austin Hospital	52	5	32.53	0.15 (0.05-0.36)	78.06 (33.45-240.41)
Bendigo Hospital	54	8	41.87	0.19 (0.08-0.38)	62.80 (31.87-145.47)
Eastern Health Integrated Renal Services	60	13	43.46	0.30 (0.16-0.51)	40.11 (23.46-75.33)
Monash Medical Centre	157	18	111.37	0.16 (0.10-0.26)	74.25 (46.98-125.28)
Northern Health Service Melbourne	43	9	33.04	0.27 (0.12-0.52)	44.06 (23.21-96.35)
St Vincent's Hospital Melbourne	88	11	65.02	0.17 (0.08-0.30)	70.93 (39.64-142.09)
The Royal Melbourne Hospital	142	17	93.07	0.18 (0.11-0.29)	65.69 (41.03-112.77)
University Hospital Geelong Barwon Health	35	8	26.99	0.30 (0.13-0.58)	40.49 (20.55-93.78)
Western Health Renal Service	120	1	82.93	0.01 (0.00-0.07)	995.19 (178.62-39307.78)
Tasmania	57	8	39.91	0.20 (0.09-0.39)	59.86 (30.38-138.65)
Launceston General Hospital	40	5	29.50	0.17 (0.06-0.40)	70.79 (30.34-218.03)
Royal Hobart Hospital	17	3	10.41	0.29 (0.06-0.84)	41.64 (14.25-201.90)
South Australia	223	36	140.22	0.26 (0.18-0.36)	46.74 (33.76-66.74)
Central Northern Adelaide Renal Service	180	34	109.05	0.31 (0.22-0.44)	38.49 (27.54-55.57)
Flinders Medical Centre	43	2	31.18	0.06 (0.01-0.23)	187.07 (51.79-1544.71)
Northern Territory	75	20	48.86	0.41 (0.25-0.63)	29.32 (18.98-47.99)
Alice Springs Hospital	8	0	5.05	0.00 (0.00-0.73)	. (16.43-.)
Royal Darwin Hospital	67	20	43.81	0.46 (0.28-0.71)	26.29 (17.02-43.03)
Western Australia	362	79	235.20	0.34 (0.27-0.42)	35.73 (28.67-45.13)
Fiona Stanley Hospital	94	14	55.87	0.25 (0.14-0.42)	47.89 (28.54-87.60)
Royal Perth Hospital	114	26	74.87	0.35 (0.23-0.51)	34.55 (23.58-52.90)
Sir Charles Gairdner Hospital	154	39	104.46	0.37 (0.27-0.51)	32.14 (23.51-45.20)

PD Peritonitis Rate, Adults

01 January 2021 - 31 December 2021



PD Peritonitis Rate, Adults By Jurisdiction, 2021



1.2 Paediatric

This table presents the total number of peritonitis episodes and patient exposure in years by Centre. Patient totals, exposure and peritonitis episodes were determined using the hospital at which the patient was receiving treatment at the time. So, if a patient transferred units during the observation period, the subsequent exposure and peritonitis episodes were allocated to the new unit. Months per episode (PM per Episode) is also reported. This should be interpreted as the average number of months between episodes of peritonitis; it can not be calculated if the peritonitis rate is zero. Patients are included in this paediatric report if they were treated at a paediatric hospital. In rare cases when patients younger than 18 years are treated at an adult centre, they are included in the adult report. Any patients 18 years and older treated at a paediatric hospital are included in this report. This quality indicator is presented for Australia only as New Zealand peritonitis episode data is reported through the New Zealand Peritoneal Dialysis Registry.

Centre	PD Patients	No of Episodes	Person Years	Rate (95% CI)	PM per Episode (95% CI)
Australia	59	6	36.41	0.16 (0.06-0.36)	72.83 (33.46-198.45)
Queensland	26	0	15.43	0.00 (0.00-0.24)	. (50.18-.)
Child and Adolescent Renal Service	26	0	15.43	0.00 (0.00-0.24)	. (50.18-.)
New South Wales	8	2	5.94	0.34 (0.04-1.22)	35.61 (9.86-294.08)
Sydney Children's Hospital	4	2	2.46	0.81 (0.10-2.94)	14.77 (4.09-121.94)
The Children's Hospital at Westmead	4	0	3.47	0.00 (0.00-1.06)	. (11.30-.)
Victoria	16	3	9.49	0.32 (0.07-0.92)	37.97 (12.99-184.11)
Monash Children's Centre	6	3	4.36	0.69 (0.14-2.01)	17.42 (5.96-84.49)
Royal Children's Hospital	10	0	5.14	0.00 (0.00-0.72)	. (16.71-.)
South Australia	5	1	4.42	0.23 (0.01-1.26)	52.99 (9.51-2093.15)
Women's and Children's Hospital	5	1	4.42	0.23 (0.01-1.26)	52.99 (9.51-2093.15)
Western Australia	4	0	1.14	0.00 (0.00-3.22)	. (3.72-.)
Perth Children's Hospital	4	0	1.14	0.00 (0.00-3.22)	. (3.72-.)

2 Dialysis Access Planning at Commencement of Dialysis

2.1 All Dialysis Access Planning

2.1.1 Adult

This table presents the numbers of patients beginning haemodialysis or peritoneal dialysis and the percentage starting with a permanent access (an AVF or AVG for haemodialysis and all peritoneal dialysis patients) during the observation window by Centre, where dialysis was the first kidney replacement therapy. Patients are excluded from this adult report if they were treated at a paediatric hospital. In rare cases when patients younger than 18 years are treated at an adult centre, they are included in this adult report. Any patients 18 years and older treated at a paediatric hospital are excluded from this report. Some Centres did not report type of first access for all new HD patients. The percent beginning with a permanent access is based on the number of patients with data available for first access. Finally, the total of Early Referrals (patients seen more than 3 months before first treatment) and the percentage of Early Referrals with a permanent access are also presented.

Centre	Dialysis Patients	AVF or AVG or PD	Vascular Catheter	Missing Access Data	% of AVF or AVG or PD (95 % CI)	Early Referral	% of Early Referrals with AVF or AVG or PD
Australia	3167	1829	1333	5	58 (56-60)	2611	65 (63-67)
Queensland	678	398	280	0	59 (55-62)	574	65 (61-69)
Bundaberg Hospital	15	10	5	0	67 (38-88)	13	77 (46-95)
Cairns Hospital	72	45	27	0	62 (50-74)	59	71 (58-82)
Cairns Private Hospital	5	2	3	0	40 (5-85)	5	40 (5-85)
Chermside Dialysis Centre	13	6	7	0	46 (19-75)	13	46 (19-75)
Gold Coast Private Hospital	5	2	3	0	40 (5-85)	4	25 (1-81)
Gold Coast University Hospital	64	36	28	0	56 (43-69)	62	56 (43-69)
Henry Dalziel Dialysis Clinic - Greenslopes	33	25	8	0	76 (58-89)	33	76 (58-89)
Hervey Bay Hospital	18	13	5	0	72 (47-90)	17	76 (50-93)
Ipswich Hospital	10	3	7	0	30 (7-65)	9	33 (7-70)
John Flynn Private Hospital	16	5	11	0	31 (11-59)	12	42 (15-72)
Mackay Base Hospital	24	14	10	0	58 (37-78)	23	61 (39-80)

continued on next page

continued from previous page

Centre	Dialysis Patients	AVF or AVG or PD	Vascular Catheter	Missing Access Data	% of AVF or AVG or PD (95 % CI)	Early Referral	% of Early Referrals with AVF or AVG or PD
Mater Hospital, Brisbane	16	3	13	0	19 (4-46)	10	30 (7-65)
Mater Hospital, Townsville	8	3	5	0	38 (9-76)	5	60 (15-95)
Morayfield B.Braun Renal Care Centre	1	0	1	0	0 (0-98)	0	–
Nambour Selangor Private Hospital	1	1	0	0	100 (2-100)	1	100 (2-100)
North Lakes Dialysis Centre	13	5	8	0	38 (14-68)	11	45 (17-77)
Pindara Renal Unit	7	4	3	0	57 (18-90)	7	57 (18-90)
Princess Alexandra Hospital	118	85	33	0	72 (63-80)	96	80 (71-88)
Rockhampton Hospital	18	5	13	0	28 (10-53)	8	50 (16-84)
Royal Brisbane and Women's Hospital	66	43	23	0	65 (52-76)	55	71 (57-82)
St Andrew's Ipswich Private Hospital	9	6	3	0	67 (30-93)	9	67 (30-93)
St Andrew's Toowoomba B.Braun'S Dialysis Clinic	8	4	4	0	50 (16-84)	8	50 (16-84)
Sunshine Coast University Hospital	36	20	16	0	56 (38-72)	28	71 (51-87)
Sunshine Coast University Private Hospital	9	8	1	0	89 (52-100)	8	100 (63-100)
The Wesley Hospital Brisbane	9	2	7	0	22 (3-60)	0	–
Toowoomba Hospital	26	22	4	0	85 (65-96)	25	84 (64-95)
Townsville University Hospital	58	26	32	0	45 (32-58)	53	45 (32-60)
New South Wales	928	580	346	2	63 (59-66)	782	68 (65-71)
Bathurst Base Hospital	6	2	4	0	33 (4-78)	6	33 (4-78)
Coffs Harbour Hospital	10	6	3	1	67 (30-93)	7	86 (42-100)
Dubbo Base Hospital	7	5	2	0	71 (29-96)	7	71 (29-96)
Gosford Hospital	46	22	24	0	48 (33-63)	40	50 (34-66)
Gregory Hills B.Braun Renal Care Centre	2	2	0	0	100 (16-100)	2	100 (16-100)
John Hunter Hospital	55	36	19	0	65 (51-78)	43	77 (61-88)
Lismore Base Hospital	23	14	9	0	61 (39-80)	22	64 (41-83)
Liverpool Private Dialysis Centre	2	1	1	0	50 (1-99)	2	50 (1-99)
Manning Rural Referral Hospital	11	7	4	0	64 (31-89)	9	56 (21-86)

continued on next page

continued from previous page

Centre	Dialysis Patients	AVF or AVG or PD	Vascular Catheter	Missing Access Data	% of AVF or AVG or PD (95 % CI)	Early Referral	% of Early Referrals with AVF or AVG or PD
Mater Hospital, North Sydney	7	6	1	0	86 (42-100)	7	86 (42-100)
Mayo Private Hospital	3	1	2	0	33 (1-91)	0	—
Nepean Hospital	40	27	13	0	68 (51-81)	37	68 (50-82)
Newcastle Dialysis Centre	4	3	1	0	75 (19-99)	4	75 (19-99)
Orange Health Service	16	10	6	0	62 (35-85)	12	75 (43-95)
Port Macquarie Base Hospital	21	11	10	0	52 (30-74)	18	56 (31-78)
Royal North Shore Hospital	66	46	20	0	70 (57-80)	45	78 (63-89)
South West Sydney Renal Service	157	95	62	0	61 (52-68)	153	59 (51-67)
St George Hospital	46	32	14	0	70 (54-82)	40	78 (62-89)
St Vincent's Hospital Sydney	36	11	25	0	31 (16-48)	15	73 (45-92)
St Vincent's Lismore Private Dialysis Centre	4	4	0	0	100 (40-100)	4	100 (40-100)
Statewide Renal Services	104	61	43	0	59 (49-68)	83	64 (53-74)
<i>Concord Repatriation General Hospital</i>	<i>34</i>	<i>23</i>	<i>11</i>	<i>0</i>	<i>68 (49-83)</i>	<i>30</i>	<i>77 (58-90)</i>
<i>Griffith Base Hospital</i>	<i>5</i>	<i>3</i>	<i>2</i>	<i>0</i>	<i>60 (15-95)</i>	<i>3</i>	<i>33 (1-91)</i>
<i>Royal Prince Alfred Hospital</i>	<i>44</i>	<i>26</i>	<i>18</i>	<i>0</i>	<i>59 (43-74)</i>	<i>35</i>	<i>63 (45-79)</i>
<i>Wagga Wagga Base Hospital</i>	<i>21</i>	<i>9</i>	<i>12</i>	<i>0</i>	<i>43 (22-66)</i>	<i>15</i>	<i>47 (21-73)</i>
Sydney Adventist Hospital	7	3	4	0	43 (10-82)	4	50 (7-93)
Tamworth Hospital	23	14	9	0	61 (39-80)	17	76 (50-93)
The Prince of Wales Hospital	23	16	7	0	70 (47-87)	22	73 (50-89)
The Tweed Hospital	10	4	6	0	40 (12-74)	10	40 (12-74)
Westmead Hospital	152	106	45	1	70 (62-77)	129	76 (68-83)
Wollongong Hospital	47	35	12	0	74 (60-86)	44	77 (62-89)
Australian Capital Territory	71	26	45	0	37 (25-49)	54	48 (34-62)
Access Nephrology	6	3	3	0	50 (12-88)	5	60 (15-95)
Canberra Hospital	65	23	42	0	35 (24-48)	49	47 (33-62)

continued on next page

continued from previous page

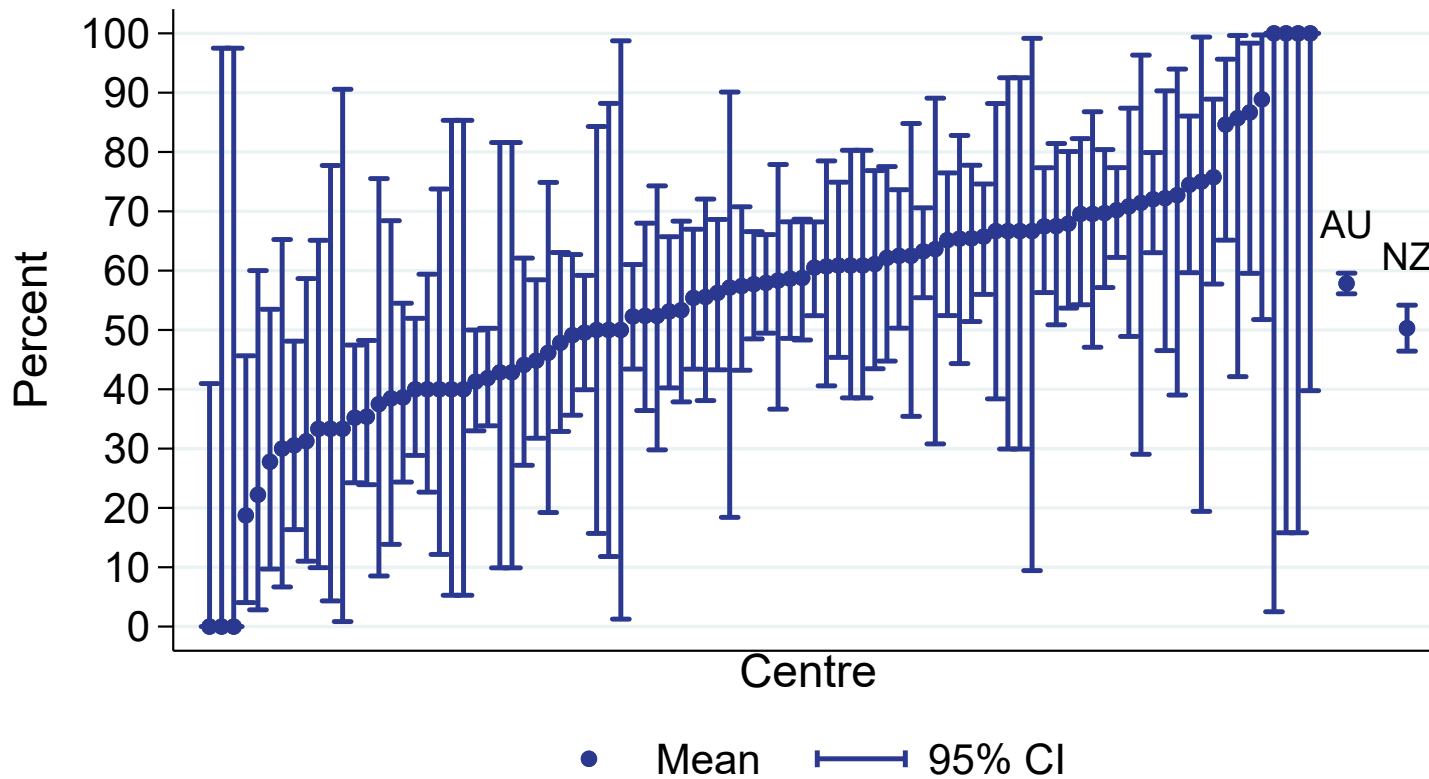
Centre	Dialysis Patients	AVF or AVG or PD	Vascular Catheter	Missing Access Data	% of AVF or AVG or PD (95 % CI)	Early Referral	% of Early Referrals with AVF or AVG or PD
Victoria	736	414	321	1	56 (53-60)	577	64 (60-68)
Alfred Hospital	58	28	29	1	49 (36-63)	39	62 (45-77)
Austin Hospital	64	34	30	0	53 (40-66)	44	66 (50-80)
Bendigo Hospital	24	17	7	0	71 (49-87)	22	68 (45-86)
Diamond Valley B.Braun Renal Care Centre	3	2	1	0	67 (9-99)	3	67 (9-99)
Eastern Health Integrated Renal Services	45	24	21	0	53 (38-68)	43	53 (38-69)
Epworth Eastern Hospital	7	3	4	0	43 (10-82)	6	33 (4-78)
Epworth Richmond Hospital	7	0	7	0	0 (0-41)	5	0 (0-52)
Forest Hill Dialysis Centre	2	2	0	0	100 (16-100)	2	100 (16-100)
Malvern Dialysis Centre	15	13	2	0	87 (60-98)	12	100 (74-100)
Monash Medical Centre	145	84	61	0	58 (49-66)	127	65 (56-74)
Northern Health Service Melbourne	46	28	18	0	61 (45-75)	26	62 (41-80)
St Vincent's Hospital Melbourne	54	31	23	0	57 (43-71)	38	61 (43-76)
Sunshine Private Dialysis Centre Fresenius	1	0	1	0	0 (0-98)	0	—
The Royal Melbourne Hospital	132	69	63	0	52 (43-61)	110	57 (47-67)
University Hospital Geelong Barwon Health	36	22	14	0	61 (43-77)	27	78 (58-91)
Western Health Renal Service	97	57	40	0	59 (48-69)	73	77 (65-86)
Tasmania	58	29	29	0	50 (37-63)	49	59 (44-73)
Launceston General Hospital	28	17	11	0	61 (41-78)	26	65 (44-83)
Royal Hobart Hospital	30	12	18	0	40 (23-59)	23	52 (31-73)
South Australia	219	141	78	0	64 (58-71)	197	70 (63-76)
Central Northern Adelaide Renal Service	166	105	61	0	63 (55-71)	151	68 (59-75)
Flinders Medical Centre	53	36	17	0	68 (54-80)	46	78 (64-89)
Northern Territory	118	58	60	0	49 (40-59)	102	55 (45-65)

continued on next page

continued from previous page

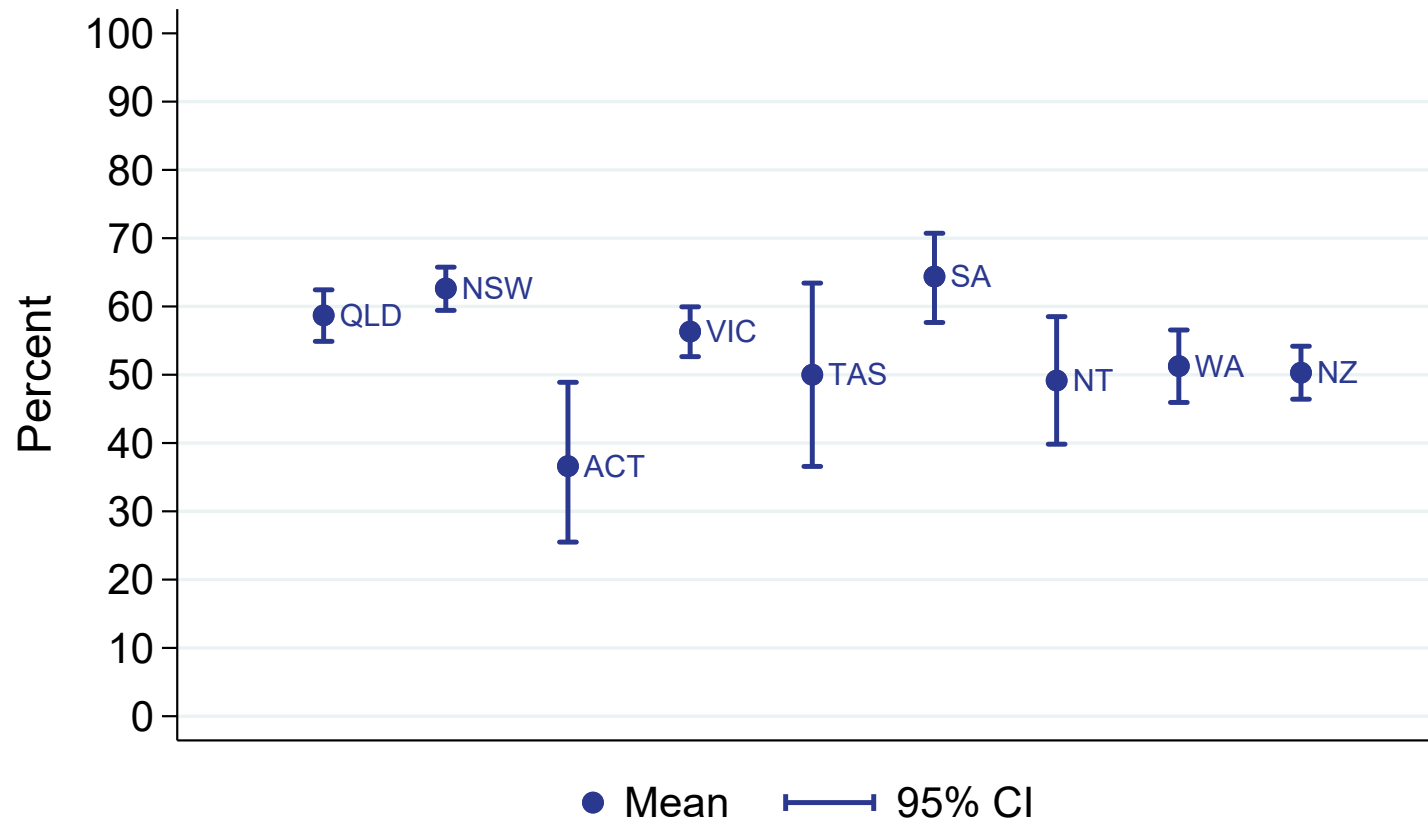
Centre	Dialysis Patients	AVF or AVG or PD	Vascular Catheter	Missing Access Data	% of AVF or AVG or PD (95 % CI)	Early Referral	% of Early Referrals with AVF or AVG or PD
Alice Springs Hospital	44	17	27	0	39 (24-55)	40	40 (25-57)
Royal Darwin Hospital	74	41	33	0	55 (43-67)	62	65 (51-76)
Western Australia	359	183	174	2	51 (46-57)	276	60 (54-66)
Fiona Stanley Hospital	139	57	81	1	41 (33-50)	98	50 (40-60)
Royal Perth Hospital	112	55	56	1	50 (40-59)	88	57 (46-67)
Sir Charles Gairdner Hospital	108	71	37	0	66 (56-75)	90	73 (63-82)
New Zealand	663	333	329	1	50 (46-54)	572	53 (49-57)
Auckland City Hospital	71	25	46	0	35 (24-47)	65	37 (25-50)
Christchurch Hospital	42	22	20	0	52 (36-68)	38	58 (41-74)
Dunedin Hospital	26	17	9	0	65 (44-83)	24	71 (49-87)
Hawkes Bay Hospital	12	4	8	0	33 (10-65)	9	44 (14-79)
Middlemore Hospital	148	62	86	0	42 (34-50)	131	36 (28-45)
Palmerston North Hospital	38	23	14	1	62 (45-78)	34	68 (49-83)
Taranaki Hospital	11	8	3	0	73 (39-94)	10	80 (44-97)
Waikato Hospital	123	71	52	0	58 (48-67)	104	62 (52-72)
Waitemata Renal Service	75	30	45	0	40 (29-52)	57	44 (31-58)
Wellington Regional Hospital	83	56	27	0	67 (56-77)	75	75 (63-84)
Whangarei Hospital	34	15	19	0	44 (27-62)	25	48 (28-69)

All dialysis access planning (AVF/AVG or PD)
% of all dialysis starts, Adults
01 January 2021 - 31 December 2021



All adult dialysis starts including late referred patients

All dialysis access planning (AVF/AVG or PD)
% of all dialysis starts, Adults
By Jurisdiction, 2021



2.1.2 Paediatric

This table presents the numbers of patients beginning haemodialysis or peritoneal dialysis and the percentage starting with a permanent access (an AVF or AVG for haemodialysis and all peritoneal dialysis patients) during the observation window by Centre, where dialysis was the first kidney replacement therapy. Patients are included in this paediatric report if they were treated at a paediatric hospital. In rare cases when patients younger than 18 years are treated at an adult centre, they are included in the adult report. Any patients 18 years and older treated at a paediatric hospital are included in this report. Some Centres did not report type of first access for all new HD patients. The percent beginning with a permanent access is based on the number of patients with data available for first access. Finally, the total of Early Referrals (patients seen more than 3 months before first treatment) and the percentage of Early Referrals with a permanent access are also presented.

Centre	Dialysis Patients	AVF or AVG or PD	Vascular Catheter	Missing Access Data	% of AVF or AVG or PD (95 % CI)	Early Referral	% of Early Referrals with AVF or AVG or PD
Australia	32	16	14	2	53 (34-72)	21	67 (43-85)
Queensland	13	7	6	0	54 (25-81)	9	78 (40-97)
Child and Adolescent Renal Service	13	7	6	0	54 (25-81)	9	78 (40-97)
New South Wales	5	1	2	2	33 (1-91)	1	0 (0-98)
Sydney Children's Hospital	2	1	1	0	50 (1-99)	0	—
The Children's Hospital at Westmead	3	0	1	2	0 (0-98)	1	0 (0-98)
Victoria	7	5	2	0	71 (29-96)	6	67 (22-96)
Monash Children's Centre	3	2	1	0	67 (9-99)	2	50 (1-99)
Royal Children's Hospital	4	3	1	0	75 (19-99)	4	75 (19-99)
South Australia	5	1	4	0	20 (0-72)	3	33 (1-91)
Women's and Children's Hospital	5	1	4	0	20 (0-72)	3	33 (1-91)
Western Australia	2	2	0	0	100 (16-100)	2	100 (16-100)

continued on next page

continued from previous page

Centre	Dialysis Patients	AVF or AVG or PD	Vascular Catheter	Missing Access Data	% of AVF or AVG or PD (95 % CI)	Early Referral	% of Early Referrals with AVF or AVG or PD
Perth Children's Hospital	2	2	0	0	100 (16-100)	2	100 (16-100)
New Zealand	6	4	2	0	67 (22-96)	3	67 (9-99)
Starship Children's Hospital	6	4	2	0	67 (22-96)	3	67 (9-99)

2.2 Vascular Access at First Haemodialysis

2.2.1 Adult

This table presents the numbers of patients beginning haemodialysis and the percentage starting with an AVF or AVG during the observation window by Centre, where HD was the first kidney replacement therapy. Patients are excluded from this adult report if they were treated at a paediatric hospital. In rare cases when patients younger than 18 years are treated at an adult centre, they are included in this adult report. Any patients 18 years and older treated at a paediatric hospital are excluded from this report. Some Centres did not report type of first access for all new HD patients. The percent beginning with AVF or AVG is based on the number of patients with data available for first access. Finally, the total of Early Referrals (patients seen more than 3 months before first treatment) and the percentage of Early Referrals with AVF or AVG are also presented.

Centre	HD Patients	AVF or AVG	Vascular Catheter	Missing Access Data	% of AVF or AVG (95 % CI)	Early Referral	% of Early Referrals with AVF or AVG
Australia	2290	952	1333	5	42 (40-44)	1811	49 (47-52)
Queensland	513	233	280	0	45 (41-50)	423	53 (48-58)
Bundaberg Hospital	12	7	5	0	58 (28-85)	10	70 (35-93)
Cairns Hospital	60	33	27	0	55 (42-68)	49	65 (50-78)
Cairns Private Hospital	5	2	3	0	40 (5-85)	5	40 (5-85)
Chermside Dialysis Centre	13	6	7	0	46 (19-75)	13	46 (19-75)
Gold Coast Private Hospital	5	2	3	0	40 (5-85)	4	25 (1-81)
Gold Coast University Hospital	42	14	28	0	33 (20-50)	41	34 (20-51)
Henry Dalziel Dialysis Clinic - Greenslopes	33	25	8	0	76 (58-89)	33	76 (58-89)
Hervey Bay Hospital	10	5	5	0	50 (19-81)	9	56 (21-86)
Ipswich Hospital	10	3	7	0	30 (7-65)	9	33 (7-70)
John Flynn Private Hospital	16	5	11	0	31 (11-59)	12	42 (15-72)
Mackay Base Hospital	21	11	10	0	52 (30-74)	20	55 (32-77)
Mater Hospital, Brisbane	16	3	13	0	19 (4-46)	10	30 (7-65)
Mater Hospital, Townsville	8	3	5	0	38 (9-76)	5	60 (15-95)
Morayfield B.Braun Renal Care Centre	1	0	1	0	0 (0-98)	0	—

continued on next page

continued from previous page

Centre	HD Patients	AVF or AVG	Vascular Catheter	Missing Access Data	% of AVF or AVG (95 % CI)	Early Referral	% of Early Referrals with AVF or AVG
Nambour Selangor Private Hospital	1	1	0	0	100 (2-100)	1	100 (2-100)
North Lakes Dialysis Centre	13	5	8	0	38 (14-68)	11	45 (17-77)
Pindara Renal Unit	7	4	3	0	57 (18-90)	7	57 (18-90)
Princess Alexandra Hospital	55	22	33	0	40 (27-54)	37	49 (32-66)
Rockhampton Hospital	18	5	13	0	28 (10-53)	8	50 (16-84)
Royal Brisbane and Women's Hospital	46	23	23	0	50 (35-65)	39	59 (42-74)
St Andrew's Ipswich Private Hospital	9	6	3	0	67 (30-93)	9	67 (30-93)
St Andrew's Toowoomba B.Braun'S Dialysis Clinic	8	4	4	0	50 (16-84)	8	50 (16-84)
Sunshine Coast University Hospital	30	14	16	0	47 (28-66)	22	64 (41-83)
Sunshine Coast University Private Hospital	9	8	1	0	89 (52-100)	8	100 (63-100)
The Wesley Hospital Brisbane	9	2	7	0	22 (3-60)	0	—
Toowoomba Hospital	11	7	4	0	64 (31-89)	11	64 (31-89)
Townsville University Hospital	45	13	32	0	29 (16-44)	42	31 (18-47)
New South Wales	612	264	346	2	43 (39-47)	494	50 (45-54)
Bathurst Base Hospital	6	2	4	0	33 (4-78)	6	33 (4-78)
Coffs Harbour Hospital	10	6	3	1	67 (30-93)	7	86 (42-100)
Dubbo Base Hospital	7	5	2	0	71 (29-96)	7	71 (29-96)
Gosford Hospital	38	14	24	0	37 (22-54)	33	39 (23-58)
Gregory Hills B.Braun Renal Care Centre	2	2	0	0	100 (16-100)	2	100 (16-100)
John Hunter Hospital	41	22	19	0	54 (37-69)	30	67 (47-83)
Lismore Base Hospital	18	9	9	0	50 (26-74)	17	53 (28-77)
Liverpool Private Dialysis Centre	2	1	1	0	50 (1-99)	2	50 (1-99)
Manning Rural Referral Hospital	6	2	4	0	33 (4-78)	5	20 (0-72)
Mater Hospital, North Sydney	7	6	1	0	86 (42-100)	7	86 (42-100)
Mayo Private Hospital	3	1	2	0	33 (1-91)	0	—
Nepean Hospital	24	11	13	0	46 (26-67)	22	45 (24-68)
Newcastle Dialysis Centre	4	3	1	0	75 (19-99)	4	75 (19-99)

continued on next page

continued from previous page

Centre	HD Patients	AVF or AVG	Vascular Catheter	Missing Access Data	% of AVF or AVG (95 % CI)	Early Referral	% of Early Referrals with AVF or AVG
Orange Health Service	8	2	6	0	25 (3-65)	5	40 (5-85)
Port Macquarie Base Hospital	21	11	10	0	52 (30-74)	18	56 (31-78)
Royal North Shore Hospital	43	23	20	0	53 (38-69)	30	67 (47-83)
South West Sydney Renal Service	89	27	62	0	30 (21-41)	89	30 (21-41)
St George Hospital	34	20	14	0	59 (41-75)	29	69 (49-85)
St Vincent's Hospital Sydney	31	6	25	0	19 (7-37)	10	60 (26-88)
St Vincent's Lismore Private Dialysis Centre	4	4	0	0	100 (40-100)	4	100 (40-100)
Statewide Renal Services	66	23	43	0	35 (24-48)	49	39 (25-54)
<i>Concord Repatriation General Hospital</i>	<i>17</i>	<i>6</i>	<i>11</i>	<i>0</i>	<i>35 (14-62)</i>	<i>13</i>	<i>46 (19-75)</i>
<i>Griffith Base Hospital</i>	<i>4</i>	<i>2</i>	<i>2</i>	<i>0</i>	<i>50 (7-93)</i>	<i>3</i>	<i>33 (1-91)</i>
<i>Royal Prince Alfred Hospital</i>	<i>30</i>	<i>12</i>	<i>18</i>	<i>0</i>	<i>40 (23-59)</i>	<i>24</i>	<i>46 (26-67)</i>
<i>Wagga Wagga Base Hospital</i>	<i>15</i>	<i>3</i>	<i>12</i>	<i>0</i>	<i>20 (4-48)</i>	<i>9</i>	<i>11 (0-48)</i>
Sydney Adventist Hospital	7	3	4	0	43 (10-82)	4	50 (7-93)
Tamworth Hospital	14	5	9	0	36 (13-65)	9	56 (21-86)
The Prince of Wales Hospital	13	6	7	0	46 (19-75)	12	50 (21-79)
The Tweed Hospital	8	2	6	0	25 (3-65)	8	25 (3-65)
Westmead Hospital	78	32	45	1	42 (30-53)	60	48 (35-62)
Wollongong Hospital	28	16	12	0	57 (37-76)	25	60 (39-79)
Australian Capital Territory	64	19	45	0	30 (19-42)	47	40 (26-56)
Access Nephrology	6	3	3	0	50 (12-88)	5	60 (15-95)
Canberra Hospital	58	16	42	0	28 (17-41)	42	38 (24-54)
Victoria	533	211	321	1	40 (35-44)	396	48 (43-53)
Alfred Hospital	35	5	29	1	15 (5-31)	20	25 (9-49)
Austin Hospital	49	19	30	0	39 (25-54)	30	50 (31-69)
Bendigo Hospital	14	7	7	0	50 (23-77)	13	46 (19-75)
Diamond Valley B.Braun Renal Care Centre	3	2	1	0	67 (9-99)	3	67 (9-99)

continued on next page

continued from previous page

Centre	HD Patients	AVF or AVG	Vascular Catheter	Missing Access Data	% of AVF or AVG (95 % CI)	Early Referral	% of Early Referrals with AVF or AVG
Eastern Health Integrated Renal Services	34	13	21	0	38 (22-56)	33	39 (23-58)
Epworth Eastern Hospital	7	3	4	0	43 (10-82)	6	33 (4-78)
Epworth Richmond Hospital	7	0	7	0	0 (0-41)	5	0 (0-52)
Forest Hill Dialysis Centre	2	2	0	0	100 (16-100)	2	100 (16-100)
Malvern Dialysis Centre	15	13	2	0	87 (60-98)	12	100 (74-100)
Monash Medical Centre	111	50	61	0	45 (36-55)	94	53 (43-64)
Northern Health Service Melbourne	35	17	18	0	49 (31-66)	19	47 (24-71)
St Vincent's Hospital Melbourne	35	12	23	0	34 (19-52)	23	35 (16-57)
Sunshine Private Dialysis Centre Fresenius	1	0	1	0	0 (0-98)	0	–
The Royal Melbourne Hospital	94	31	63	0	33 (24-43)	77	39 (28-51)
University Hospital Geelong Barwon Health	29	15	14	0	52 (33-71)	20	70 (46-88)
Western Health Renal Service	62	22	40	0	35 (24-49)	39	56 (40-72)
Tasmania	42	13	29	0	31 (18-47)	33	39 (23-58)
Launceston General Hospital	17	6	11	0	35 (14-62)	15	40 (16-68)
Royal Hobart Hospital	25	7	18	0	28 (12-49)	18	39 (17-64)
South Australia	154	76	78	0	49 (41-58)	135	56 (47-65)
Central Northern Adelaide Renal Service	110	49	61	0	45 (35-54)	98	50 (40-60)
Flinders Medical Centre	44	27	17	0	61 (45-76)	37	73 (56-86)
Northern Territory	106	46	60	0	43 (34-53)	91	49 (39-60)
Alice Springs Hospital	44	17	27	0	39 (24-55)	40	40 (25-57)
Royal Darwin Hospital	62	29	33	0	47 (34-60)	51	57 (42-71)
Western Australia	266	90	174	2	34 (28-40)	192	42 (35-50)
Fiona Stanley Hospital	115	33	81	1	29 (21-38)	79	38 (27-50)
Royal Perth Hospital	86	29	56	1	34 (24-45)	63	40 (28-53)

continued on next page

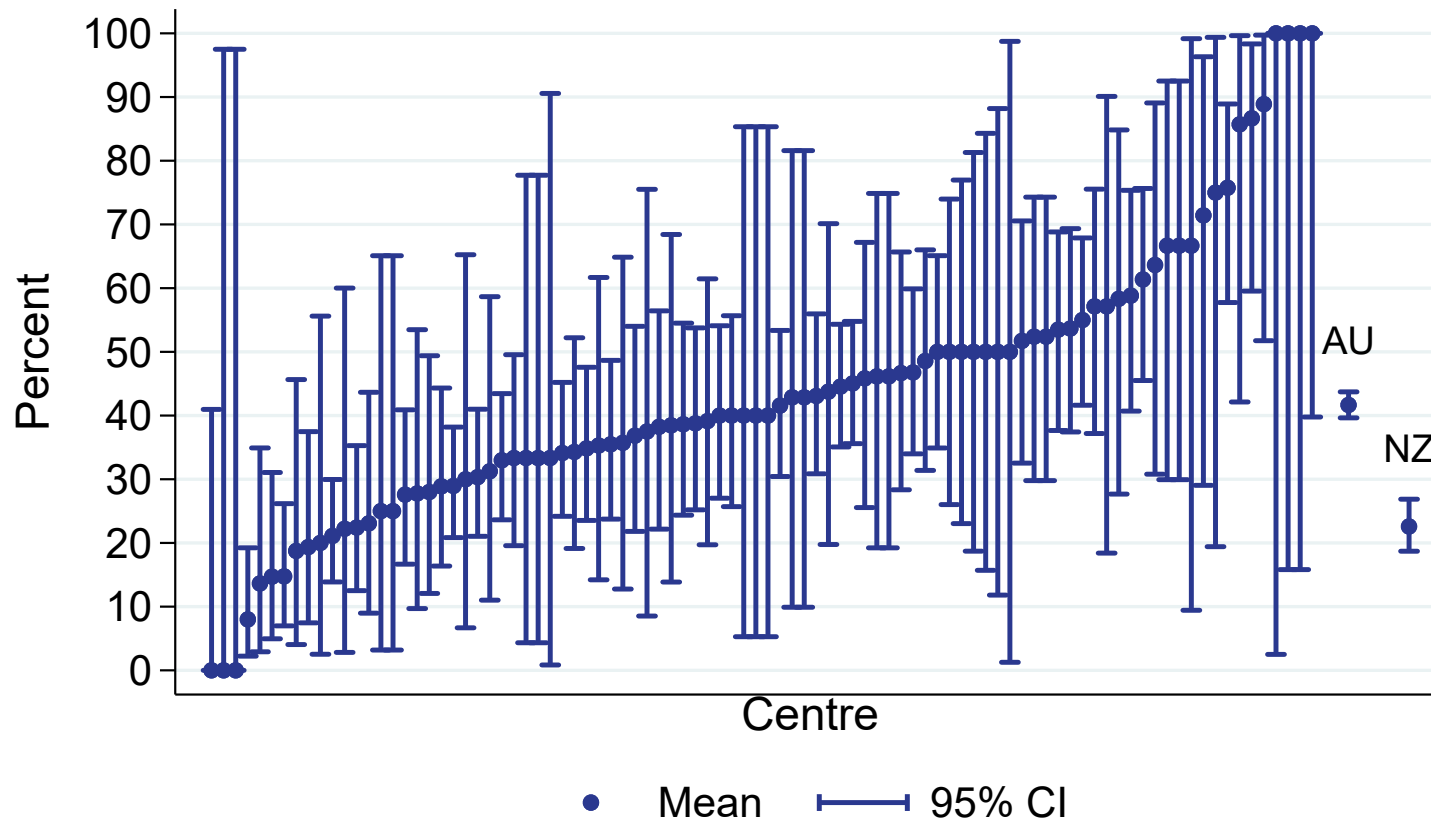
continued from previous page

Centre	HD Patients	AVF or AVG	Vascular Catheter	Missing Access Data	% of AVF or AVG (95 % CI)	Early Referral	% of Early Referrals with AVF or AVG
Sir Charles Gairdner Hospital	65	28	37	0	43 (31-56)	50	52 (37-66)
New Zealand	426	96	329	1	23 (19-27)	361	25 (21-30)
Auckland City Hospital	50	4	46	0	8 (2-19)	45	9 (2-21)
Christchurch Hospital	26	6	20	0	23 (9-44)	22	27 (11-50)
Dunedin Hospital	16	7	9	0	44 (20-70)	14	50 (23-77)
Hawkes Bay Hospital	10	2	8	0	20 (3-56)	7	29 (4-71)
Middlemore Hospital	109	23	86	0	21 (14-30)	106	21 (13-30)
Palmerston North Hospital	24	9	14	1	39 (20-61)	20	45 (23-68)
Taranaki Hospital	5	2	3	0	40 (5-85)	4	50 (7-93)
Waikato Hospital	61	9	52	0	15 (7-26)	48	19 (9-33)
Waitemata Renal Service	58	13	45	0	22 (13-35)	42	24 (12-39)
Wellington Regional Hospital	45	18	27	0	40 (26-56)	37	49 (32-66)
Whangarei Hospital	22	3	19	0	14 (3-35)	16	19 (4-46)

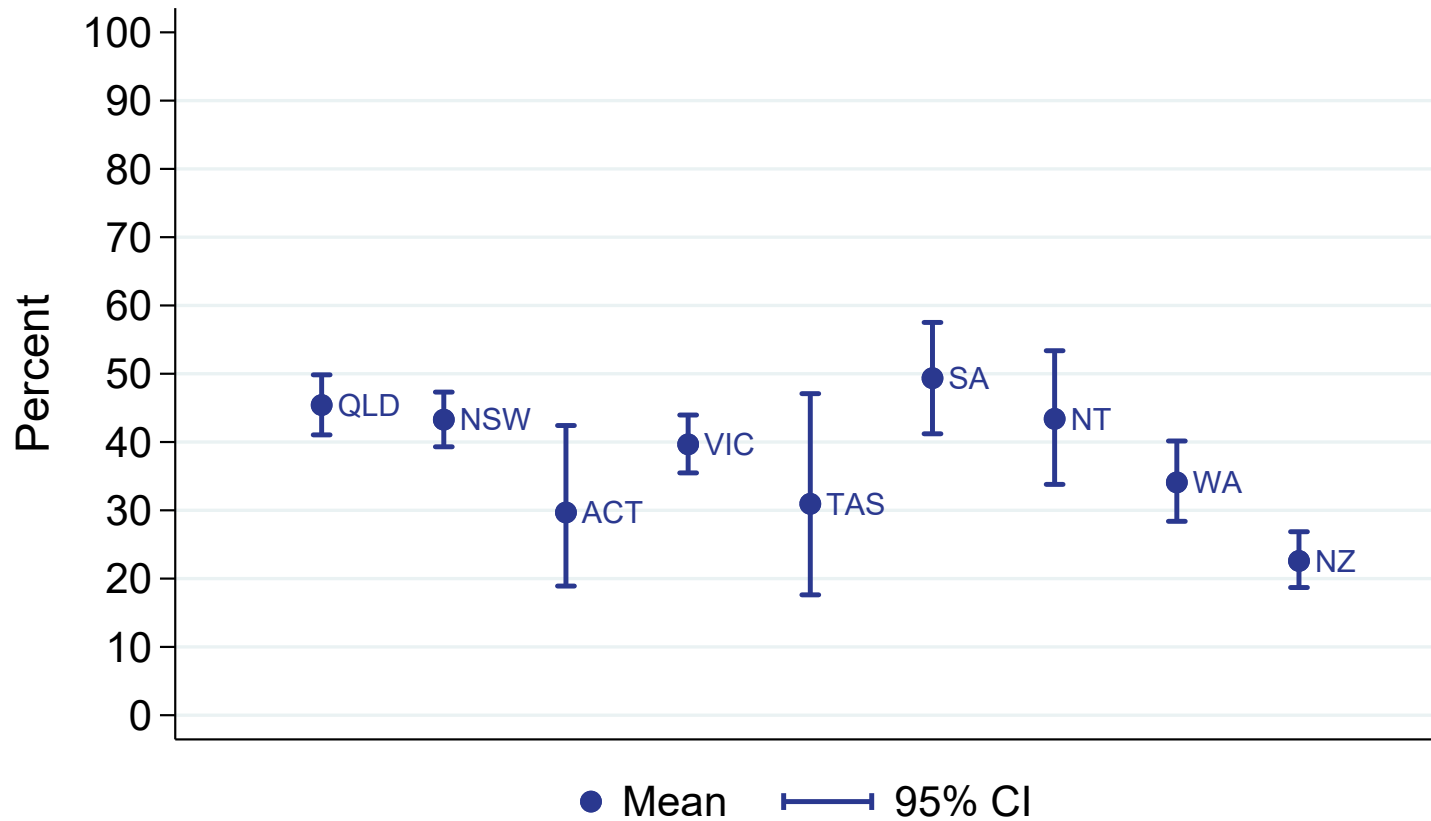
The following hospitals did not report any haemodialysis patients between 01 January 2021 and 31 December 2021:

State	Hospital
QLD	Thursday Island Hospital
NSW	Port Macquarie Private Hospital
VIC	Epworth Geelong Hospital

Vascular access at first HD (AVF/AVG)
% of all HD starts, Adults
01 January 2021 - 31 December 2021



Vascular access at first HD (AVF/AVG)
% of all HD starts, Adults
By Jurisdiction, 2021



2.2.2 Paediatric

This table presents the numbers of patients beginning haemodialysis and the percentage starting with an AVF or AVG during the observation window by Centre, where HD was the first kidney replacement therapy. Patients are included in this paediatric report if they were treated at a paediatric hospital. In rare cases when patients younger than 18 years are treated at an adult centre, they are included in the adult report. Any patients 18 years and older treated at a paediatric hospital are included in this report. Some Centres did not report type of first access for all new HD patients. The percent beginning with AVF or AVG is based on the number of patients with data available for first access. Finally, the total of Early Referrals (patients seen more than 3 months before first treatment) and the percentage of Early Referrals with AVF or AVG are also presented.

Centre	HD Patients	AVF or AVG	Vascular Catheter	Missing Access Data	% of AVF or AVG (95 % CI)	Early Referral	% of Early Referrals with AVF or AVG
Australia	16	0	14	2	0 (0-23)	7	0 (0-41)
Queensland	6	0	6	5	0 (0-98)	2	0 (0-84)
Child and Adolescent Renal Service	6	0	6	0	0 (0-46)	2	0 (0-84)
New South Wales	4	0	2	3	0 (0-98)	1	0 (0-98)
Sydney Children's Hospital	1	0	1	0	0 (0-98)	0	—
The Children's Hospital at Westmead	3	0	1	2	0 (0-98)	1	0 (0-98)
Victoria	2	0	2	1	0 (0-98)	2	0 (0-84)
Monash Children's Centre	1	0	1	0	0 (0-98)	1	0 (0-98)
Royal Children's Hospital	1	0	1	0	0 (0-98)	1	0 (0-98)
South Australia	4	0	4	3	0 (0-98)	2	0 (0-84)
Women's and Children's Hospital	4	0	4	0	0 (0-60)	2	0 (0-84)
New Zealand	2	0	2	1	0 (0-98)	1	0 (0-98)
Starship Children's Hospital	2	0	2	0	0 (0-84)	1	0 (0-98)

2.3 HD Vascular Access Planning

2.3.1 Adult

This table presents the numbers of patients on haemodialysis at day 90 and the percentage starting haemodialysis with a permanent vascular access (an AVF or AVG) during the observation window by Centre. Modality changes of less than 30 days are ignored for the determination of modality at day 90. Patients are excluded from this adult report if they were treated at a paediatric hospital. In rare cases when patients younger than 18 years are treated at an adult centre, they are included in this adult report. Any patients 18 years and older treated at a paediatric hospital are excluded from this report. Some Centres did not report type of first access for all new HD patients. The percent beginning with a permanent access is based on the number of patients with data available for first access. Finally, the total of Early Referrals (patients seen more than 3 months before first treatment) and the percentage of Early Referrals with a permanent access are also presented.

Centre	HD Patients	AVF or AVG	Vascular Catheter	Missing Access Data	% of AVF or AVG (95 % CI)	Early Referral	% of Early Referrals with AVF or AVG
Australia	2119	921	1194	4	44 (41-46)	1681	51 (49-54)
Queensland	465	221	244	0	48 (43-52)	379	56 (51-61)
Bundaberg Hospital	11	6	5	0	55 (23-83)	8	75 (35-97)
Cairns Hospital	51	31	20	0	61 (46-74)	42	71 (55-84)
Cairns Private Hospital	5	3	2	0	60 (15-95)	5	60 (15-95)
Chermside Dialysis Centre	16	8	8	0	50 (25-75)	16	50 (25-75)
Gold Coast Private Hospital	4	2	2	0	50 (7-93)	3	33 (1-91)
Gold Coast University Hospital	38	14	24	0	37 (22-54)	35	40 (24-58)
Henry Dalziel Dialysis Clinic - Greenslopes	31	21	10	0	68 (49-83)	31	68 (49-83)
Hervey Bay Hospital	6	2	4	0	33 (4-78)	5	40 (5-85)
Ipswich Hospital	5	2	3	0	40 (5-85)	4	50 (7-93)
John Flynn Private Hospital	15	4	11	0	27 (8-55)	10	40 (12-74)
Mackay Base Hospital	17	10	7	0	59 (33-82)	16	62 (35-85)
Mater Hospital, Brisbane	13	4	9	0	31 (9-61)	10	40 (12-74)
Mater Hospital, Townsville	7	2	5	0	29 (4-71)	4	50 (7-93)

continued on next page

continued from previous page

Centre	HD Patients	AVF or AVG	Vascular Catheter	Missing Access Data	% of AVF or AVG (95 % CI)	Early Referral	% of Early Referrals with AVF or AVG
Morayfield B.Braun Renal Care Centre	1	0	1	0	0 (0-98)	0	–
Nambour Selangor Private Hospital	2	1	1	0	50 (1-99)	1	100 (2-100)
North Lakes Dialysis Centre	10	5	5	0	50 (19-81)	9	56 (21-86)
Pindara Renal Unit	10	6	4	0	60 (26-88)	10	60 (26-88)
Princess Alexandra Hospital	52	23	29	0	44 (30-59)	36	50 (33-67)
Rockhampton Hospital	13	2	11	0	15 (2-45)	3	33 (1-91)
Royal Brisbane and Women's Hospital	41	20	21	0	49 (33-65)	33	61 (42-77)
St Andrew's Ipswich Private Hospital	11	7	4	0	64 (31-89)	11	64 (31-89)
St Andrew's Toowoomba B.Braun'S Dialysis Clinic	6	3	3	0	50 (12-88)	6	50 (12-88)
Sunshine Coast University Hospital	26	11	15	0	42 (23-63)	21	52 (30-74)
Sunshine Coast University Private Hospital	7	6	1	0	86 (42-100)	6	100 (54-100)
The Wesley Hospital Brisbane	10	5	5	0	50 (19-81)	4	75 (19-99)
Toowoomba Hospital	18	12	6	0	67 (41-87)	16	75 (48-93)
Townsville University Hospital	39	11	28	0	28 (15-45)	34	32 (17-51)
New South Wales	589	256	332	1	44 (39-48)	477	51 (46-55)
Bathurst Base Hospital	6	2	4	0	33 (4-78)	6	33 (4-78)
Coffs Harbour Hospital	12	7	5	0	58 (28-85)	10	70 (35-93)
Dubbo Base Hospital	7	3	4	0	43 (10-82)	7	43 (10-82)
Gosford Hospital	40	14	26	0	35 (21-52)	34	41 (25-59)
John Hunter Hospital	36	19	17	0	53 (35-70)	28	64 (44-81)
Lismore Base Hospital	11	6	5	0	55 (23-83)	11	55 (23-83)
Liverpool Private Dialysis Centre	4	2	2	0	50 (7-93)	4	50 (7-93)
Manning Rural Referral Hospital	4	1	3	0	25 (1-81)	4	25 (1-81)
Mater Hospital, North Sydney	7	6	1	0	86 (42-100)	7	86 (42-100)
Mayo Private Hospital	4	2	2	0	50 (7-93)	0	–
Nepean Hospital	17	8	9	0	47 (23-72)	16	50 (25-75)
Newcastle Dialysis Centre	8	5	2	1	71 (29-96)	7	71 (29-96)

continued on next page

continued from previous page

Centre	HD Patients	AVF or AVG	Vascular Catheter	Missing Access Data	% of AVF or AVG (95 % CI)	Early Referral	% of Early Referrals with AVF or AVG
Orange Health Service	10	2	8	0	20 (3-56)	7	29 (4-71)
Port Macquarie Base Hospital	22	14	8	0	64 (41-83)	20	70 (46-88)
Royal North Shore Hospital	38	22	16	0	58 (41-74)	26	77 (56-91)
South West Sydney Renal Service	92	29	63	0	32 (22-42)	92	32 (22-42)
St George Hospital	34	25	9	0	74 (56-87)	32	78 (60-91)
St Vincent's Hospital Sydney	34	4	30	0	12 (3-27)	8	50 (16-84)
St Vincent's Lismore Private Dialysis Centre	3	3	0	0	100 (29-100)	3	100 (29-100)
Statewide Renal Services	66	24	42	0	36 (25-49)	49	39 (25-54)
<i>Concord Repatriation General Hospital</i>	18	4	14	0	22 (6-48)	15	27 (8-55)
<i>Griffith Base Hospital</i>	4	3	1	0	75 (19-99)	3	67 (9-99)
<i>Royal Prince Alfred Hospital</i>	28	13	15	0	46 (28-66)	25	48 (28-69)
<i>Wagga Wagga Base Hospital</i>	16	4	12	0	25 (7-52)	6	17 (0-64)
Sydney Adventist Hospital	9	5	4	0	56 (21-86)	7	57 (18-90)
Tamworth Hospital	15	6	9	0	40 (16-68)	11	55 (23-83)
The Prince of Wales Hospital	13	8	5	0	62 (32-86)	12	67 (35-90)
The Tweed Hospital	11	3	8	0	27 (6-61)	11	27 (6-61)
Westmead Hospital	60	26	34	0	43 (31-57)	45	51 (36-66)
Wollongong Hospital	26	10	16	0	38 (20-59)	20	45 (23-68)
Australian Capital Territory	48	20	28	0	42 (28-57)	39	51 (35-68)
Access Nephrology	7	4	3	0	57 (18-90)	6	67 (22-96)
Canberra Hospital	41	16	25	0	39 (24-55)	33	48 (31-66)
Victoria	484	203	280	1	42 (38-47)	363	50 (44-55)
Alfred Hospital	30	8	21	1	28 (13-47)	19	42 (20-67)
Austin Hospital	54	26	28	0	48 (34-62)	30	57 (37-75)
Bendigo Hospital	14	9	5	0	64 (35-87)	13	62 (32-86)
Diamond Valley B.Braun Renal Care Centre	6	5	1	0	83 (36-100)	6	83 (36-100)

continued on next page

continued from previous page

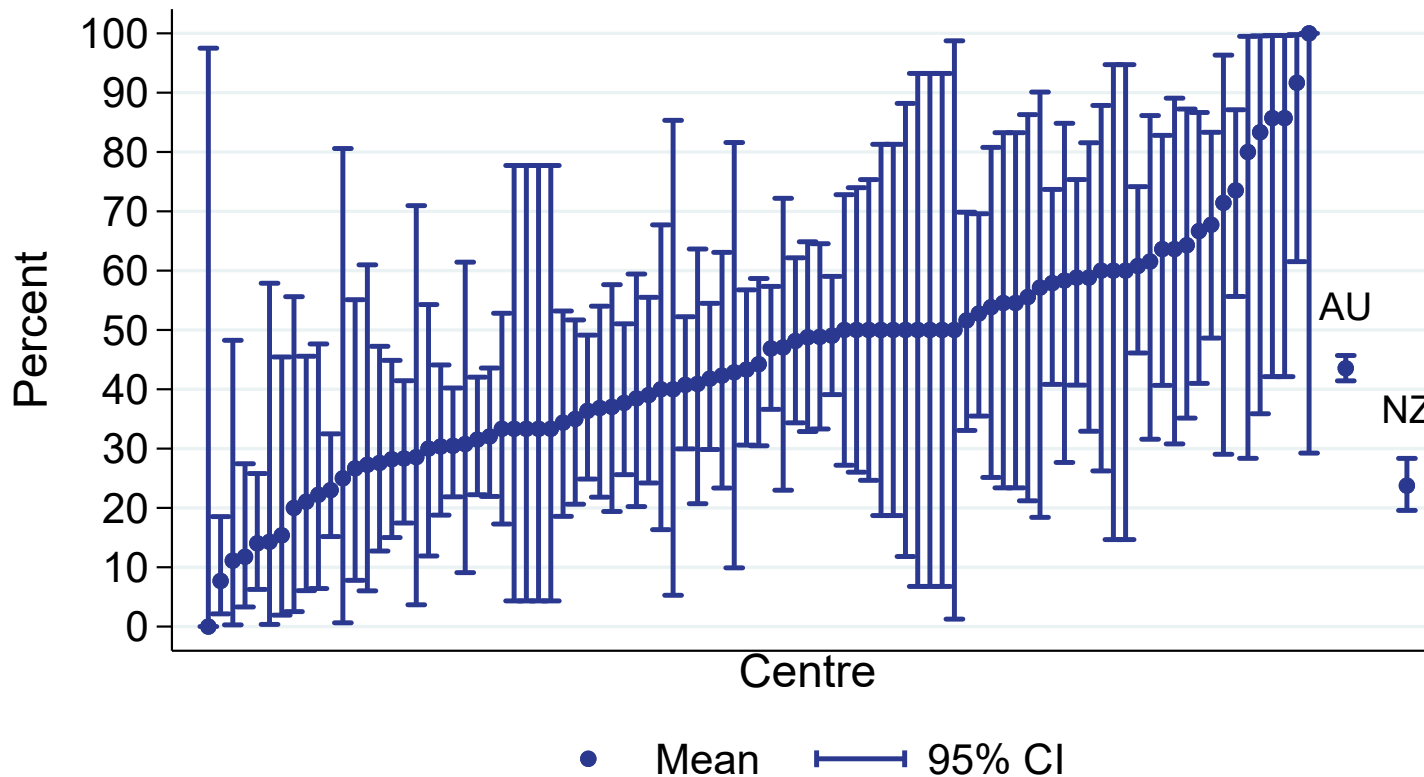
Centre	HD Patients	AVF or AVG	Vascular Catheter	Missing Access Data	% of AVF or AVG (95 % CI)	Early Referral	% of Early Referrals with AVF or AVG
Eastern Health Integrated Renal Services	30	10	20	0	33 (17-53)	29	34 (18-54)
Epworth Eastern Hospital	6	2	4	0	33 (4-78)	3	33 (1-91)
Epworth Richmond Hospital	9	1	8	0	11 (0-48)	7	14 (0-58)
Forest Hill Dialysis Centre	5	3	2	0	60 (15-95)	4	50 (7-93)
Malvern Dialysis Centre	12	11	1	0	92 (62-100)	9	100 (66-100)
Monash Medical Centre	96	45	51	0	47 (37-57)	80	56 (45-67)
Northern Health Service Melbourne	31	16	15	0	52 (33-70)	22	55 (32-76)
St Vincent's Hospital Melbourne	32	11	21	0	34 (19-53)	22	32 (14-55)
Sunshine Private Dialysis Centre Fresenius	5	4	1	0	80 (28-99)	4	100 (40-100)
The Royal Melbourne Hospital	78	25	53	0	32 (22-44)	62	39 (27-52)
University Hospital Geelong Barwon Health	20	10	10	0	50 (27-73)	16	62 (35-85)
Western Health Renal Service	56	17	39	0	30 (19-44)	37	46 (29-63)
Tasmania	36	13	23	0	36 (21-54)	28	46 (28-66)
Launceston General Hospital	18	9	9	0	50 (26-74)	15	60 (32-84)
Royal Hobart Hospital	18	4	14	0	22 (6-48)	13	31 (9-61)
South Australia	138	71	67	0	51 (43-60)	125	57 (48-66)
Central Northern Adelaide Renal Service	104	51	53	0	49 (39-59)	94	54 (44-65)
Flinders Medical Centre	34	20	14	0	59 (41-75)	31	65 (45-81)
Northern Territory	104	44	60	0	42 (33-52)	93	46 (36-57)
Alice Springs Hospital	61	23	38	0	38 (26-51)	57	39 (26-52)
Royal Darwin Hospital	43	21	22	0	49 (33-65)	36	58 (41-74)
Western Australia	255	93	160	2	37 (31-43)	177	48 (40-56)
Fiona Stanley Hospital	105	32	73	0	30 (22-40)	67	40 (28-53)
Royal Perth Hospital	83	33	48	2	41 (30-52)	55	56 (42-70)

continued on next page

continued from previous page

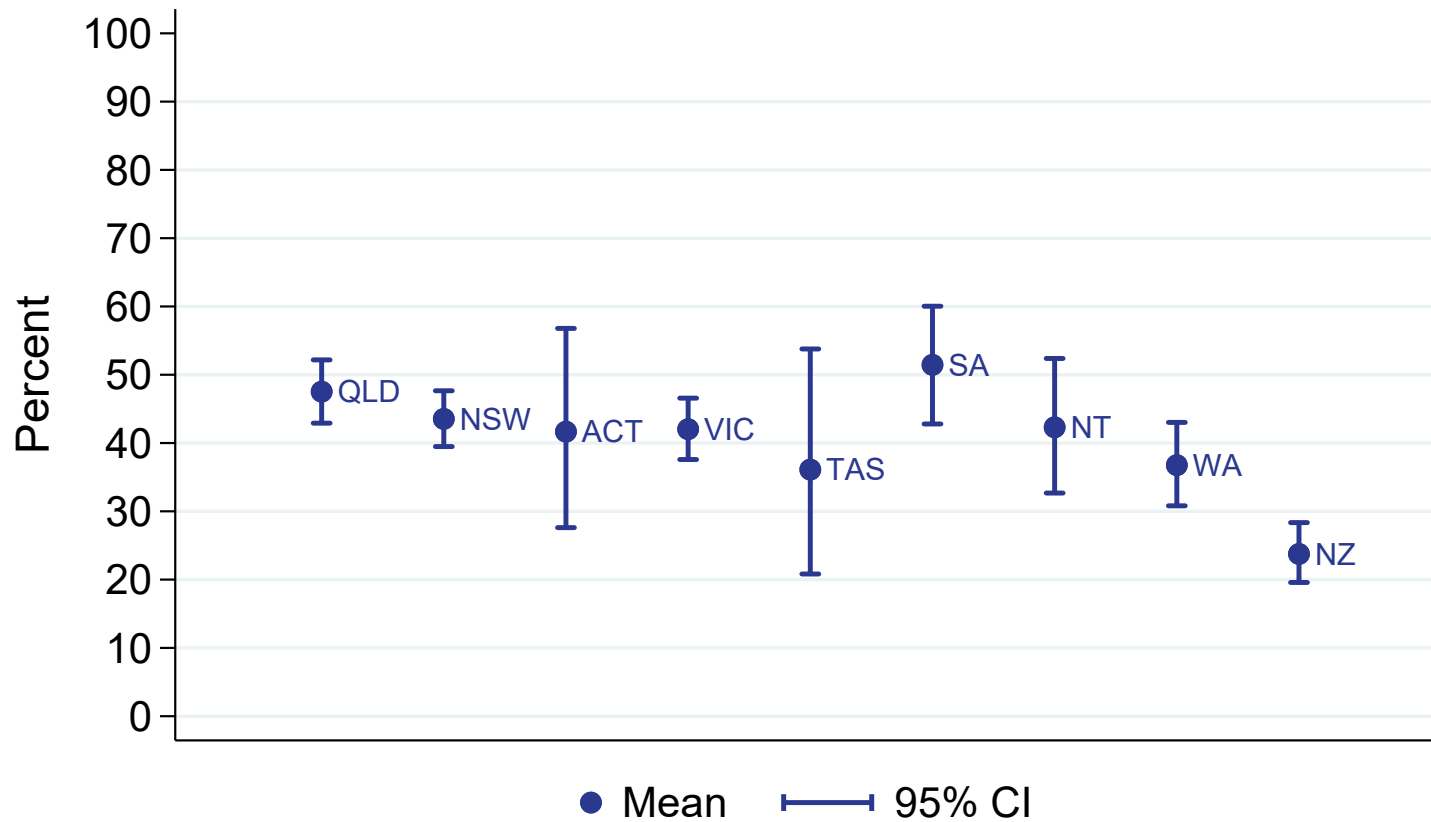
Centre	HD Patients	AVF or AVG	Vascular Catheter	Missing Access Data	% of AVF or AVG (95 % CI)	Early Referral	% of Early Referrals with AVF or AVG
Sir Charles Gairdner Hospital	67	28	39	0	42 (30-54)	55	49 (35-63)
New Zealand	387	91	292	4	24 (20-28)	325	27 (22-32)
Auckland City Hospital	52	4	48	0	8 (2-19)	48	8 (2-20)
Christchurch Hospital	20	6	14	0	30 (12-54)	17	35 (14-62)
Dunedin Hospital	14	7	6	1	54 (25-81)	11	64 (31-89)
Hawkes Bay Hospital	7	1	6	0	14 (0-58)	6	17 (0-64)
Middlemore Hospital	100	23	77	0	23 (15-32)	97	23 (15-32)
Palmerston North Hospital	23	9	13	1	41 (21-64)	17	53 (28-77)
Taranaki Hospital	6	2	4	0	33 (4-78)	5	40 (5-85)
Waikato Hospital	57	8	49	0	14 (6-26)	43	19 (8-33)
Waitemata Renal Service	62	17	43	2	28 (17-41)	43	33 (19-49)
Wellington Regional Hospital	27	10	17	0	37 (19-58)	22	45 (24-68)
Whangarei Hospital	19	4	15	0	21 (6-46)	16	25 (7-52)

HD vascular access planning (AVF/AVG at first HD) % of all HD patients at day 90, Adults 01 January 2021 - 31 December 2021



All HD patients at day 90 including those late referred

HD vascular access planning (AVF/AVG at first HD)
% of all HD patients at day 90, Adults
By Jurisdiction, 2021



2.3.2 Paediatric

This table presents the numbers of patients on haemodialysis at day 90 and the percentage starting haemodialysis with a permanent vascular access (an AVF or AVG) during the observation window by Centre. Modality changes of less than 30 days are ignored for the determination of modality at day 90. Patients are included in this paediatric report if they were treated at a paediatric hospital. In rare cases when patients younger than 18 years are treated at an adult centre, they are included in the adult report. Any patients 18 years and older treated at a paediatric hospital are included in this report. Some Centres did not report type of first access for all new HD patients. The percent beginning with a permanent access is based on the number of patients with data available for first access. Finally, the total of Early Referrals (patients seen more than 3 months before first treatment) and the percentage of Early Referrals with a permanent access are also presented.

Centre	HD Patients	AVF or AVG	Vascular Catheter	Missing Access Data	% of AVF or AVG (95 % CI)	Early Referral	% of Early Referrals with AVF or AVG
Australia	11	0	9	2	0 (0-34)	5	0 (0-52)
Queensland	1	0	1	0	0 (0-98)	0	—
Child and Adolescent Renal Service	1	0	1	0	0 (0-98)	0	—
New South Wales	5	0	3	2	0 (0-71)	2	0 (0-84)
Sydney Children's Hospital	1	0	1	0	0 (0-98)	0	—
The Children's Hospital at Westmead	4	0	2	2	0 (0-84)	2	0 (0-84)
Victoria	2	0	2	0	0 (0-84)	2	0 (0-84)
Monash Children's Centre	1	0	1	0	0 (0-98)	1	0 (0-98)
Royal Children's Hospital	1	0	1	0	0 (0-98)	1	0 (0-98)
South Australia	3	0	3	0	0 (0-71)	1	0 (0-98)
Women's and Children's Hospital	3	0	3	0	0 (0-71)	1	0 (0-98)

2.4 PD Catheter Planning

2.4.1 Adult

This table presents the numbers of patients on peritoneal dialysis at day 90 and the percentage starting kidney replacement therapy (KRT) with peritoneal dialysis during the observation window by Centre. Modality changes of less than 30 days are ignored for the determination of modality at day 90. Patients are excluded from this adult report if they were treated at a paediatric hospital. In rare cases when patients younger than 18 years are treated at an adult centre, they are included in this adult report. Any patients 18 years and older treated at a paediatric hospital are excluded from this report. Finally, the total of Early Referrals (patients seen more than 3 months before first treatment) and the percentage of Early Referrals starting with PD are also presented.

Centre	90-day PD Patients	Started KRT with PD	Did not start KRT with PD	% starting with PD (95 % CI)	Early Referral	% of Early Referrals starting with PD
Australia	917	834	83	91 (89-93)	826	93 (91-94)
Queensland	156	149	7	96 (91-98)	146	97 (92-99)
Bundaberg Hospital	2	2	0	100 (16-100)	2	100 (16-100)
Cairns Hospital	10	10	0	100 (69-100)	9	100 (66-100)
Gold Coast University Hospital	21	21	0	100 (84-100)	20	100 (83-100)
Hervey Bay Hospital	7	7	0	100 (59-100)	7	100 (59-100)
Mackay Base Hospital	4	4	0	100 (40-100)	4	100 (40-100)
Princess Alexandra Hospital	61	56	5	92 (82-97)	56	95 (85-99)
Royal Brisbane and Women's Hospital	21	20	1	95 (76-100)	20	95 (75-100)
Sunshine Coast University Hospital	6	6	0	100 (54-100)	6	100 (54-100)
Toowoomba Hospital	13	13	0	100 (75-100)	13	100 (75-100)
Townsville University Hospital	11	10	1	91 (59-100)	9	89 (52-100)
New South Wales	343	312	31	91 (87-94)	310	93 (89-95)
Dubbo Base Hospital	1	1	0	100 (2-100)	1	100 (2-100)
Gosford Hospital	11	11	0	100 (72-100)	11	100 (72-100)
John Hunter Hospital	16	13	3	81 (54-96)	14	86 (57-98)

continued on next page

continued from previous page

Centre	90-day PD Patients	Started KRT with PD	Did not start KRT with PD	% starting with PD (95 % CI)	Early Referral	% of Early Referrals starting with PD
Lismore Base Hospital	3	3	0	100 (29-100)	3	100 (29-100)
Manning Rural Referral Hospital	6	4	2	67 (22-96)	4	75 (19-99)
Nepean Hospital	21	21	0	100 (84-100)	20	100 (83-100)
Orange Health Service	6	5	1	83 (36-100)	4	100 (40-100)
Port Macquarie Base Hospital	1	0	1	0 (0-98)	1	0 (0-98)
Royal North Shore Hospital	17	17	0	100 (80-100)	11	100 (72-100)
South West Sydney Renal Service	78	72	6	92 (84-97)	73	92 (83-97)
St George Hospital	12	9	3	75 (43-95)	9	89 (52-100)
St Vincent's Hospital Sydney	6	6	0	100 (54-100)	6	100 (54-100)
Statewide Renal Services	38	37	1	97 (86-100)	34	97 (85-100)
Concord Repatriation General Hospital	16	16	0	100 (79-100)	16	100 (79-100)
Griffith Base Hospital	1	1	0	100 (2-100)	0	—
Royal Prince Alfred Hospital	14	14	0	100 (77-100)	11	100 (72-100)
Wagga Wagga Base Hospital	7	6	1	86 (42-100)	7	86 (42-100)
Tamworth Hospital	8	8	0	100 (63-100)	7	100 (59-100)
The Prince of Wales Hospital	13	11	2	85 (55-98)	13	85 (55-98)
The Tweed Hospital	2	1	1	50 (1-99)	1	100 (2-100)
Westmead Hospital	89	78	11	88 (79-94)	83	89 (80-95)
Wollongong Hospital	15	15	0	100 (78-100)	15	100 (78-100)
Australian Capital Territory	17	12	5	71 (44-90)	13	85 (55-98)
Canberra Hospital	17	12	5	71 (44-90)	13	85 (55-98)
Victoria	217	202	15	93 (89-96)	188	95 (90-97)
Alfred Hospital	28	25	3	89 (72-98)	20	90 (68-99)
Austin Hospital	12	12	0	100 (74-100)	11	100 (72-100)
Bendigo Hospital	13	12	1	92 (64-100)	12	92 (62-100)
Eastern Health Integrated Renal Services	18	16	2	89 (65-99)	17	88 (64-99)

continued on next page

continued from previous page

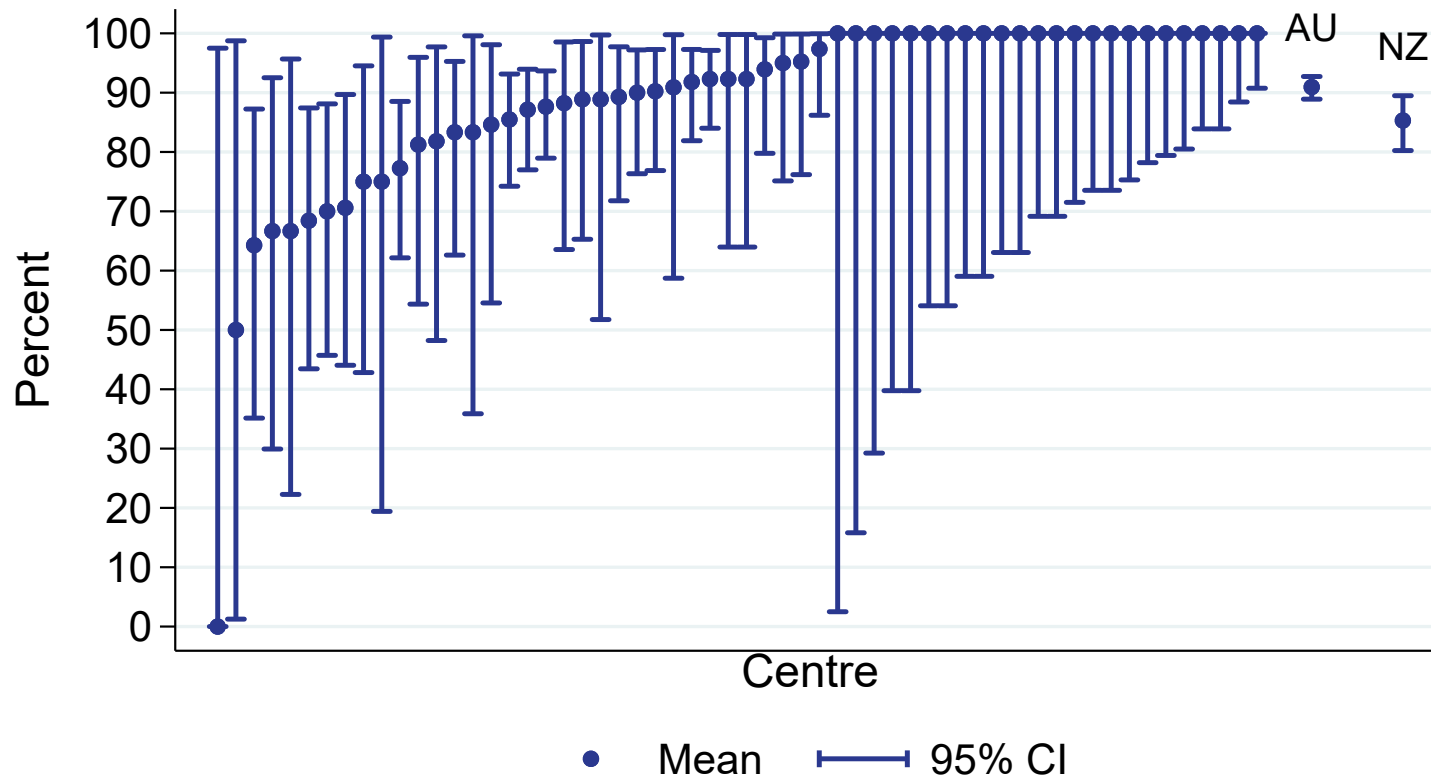
Centre	90-day PD Patients	Started KRT with PD	Did not start KRT with PD	% starting with PD (95 % CI)	Early Referral	% of Early Referrals starting with PD
Monash Medical Centre	33	31	2	94 (80-99)	32	94 (79-99)
Northern Health Service Melbourne	13	12	1	92 (64-100)	10	100 (69-100)
St Vincent's Hospital Melbourne	20	19	1	95 (75-100)	14	100 (77-100)
The Royal Melbourne Hospital	41	37	4	90 (77-97)	35	91 (77-98)
University Hospital Geelong Barwon Health	9	8	1	89 (52-100)	8	100 (63-100)
Western Health Renal Service	30	30	0	100 (88-100)	29	100 (88-100)
Tasmania	12	11	1	92 (62-100)	12	92 (62-100)
Launceston General Hospital	8	8	0	100 (63-100)	8	100 (63-100)
Royal Hobart Hospital	4	3	1	75 (19-99)	4	75 (19-99)
South Australia	77	68	9	88 (79-95)	72	90 (81-96)
Central Northern Adelaide Renal Service	70	61	9	87 (77-94)	65	89 (79-96)
Flinders Medical Centre	7	7	0	100 (59-100)	7	100 (59-100)
Northern Territory	14	9	5	64 (35-87)	13	62 (32-86)
Royal Darwin Hospital	14	9	5	64 (35-87)	13	62 (32-86)
Western Australia	81	71	10	88 (78-94)	72	90 (81-96)
Fiona Stanley Hospital	19	13	6	68 (43-87)	16	69 (41-89)
Royal Perth Hospital	24	20	4	83 (63-95)	21	90 (70-99)
Sir Charles Gairdner Hospital	38	38	0	100 (91-100)	35	100 (90-100)
New Zealand	245	209	36	85 (80-89)	212	86 (81-91)
Auckland City Hospital	17	15	2	88 (64-99)	16	88 (62-98)
Christchurch Hospital	20	14	6	70 (46-88)	18	78 (52-94)
Dunedin Hospital	11	9	2	82 (48-98)	9	78 (40-97)
Hawkes Bay Hospital	9	6	3	67 (30-93)	7	71 (29-96)

continued on next page

continued from previous page

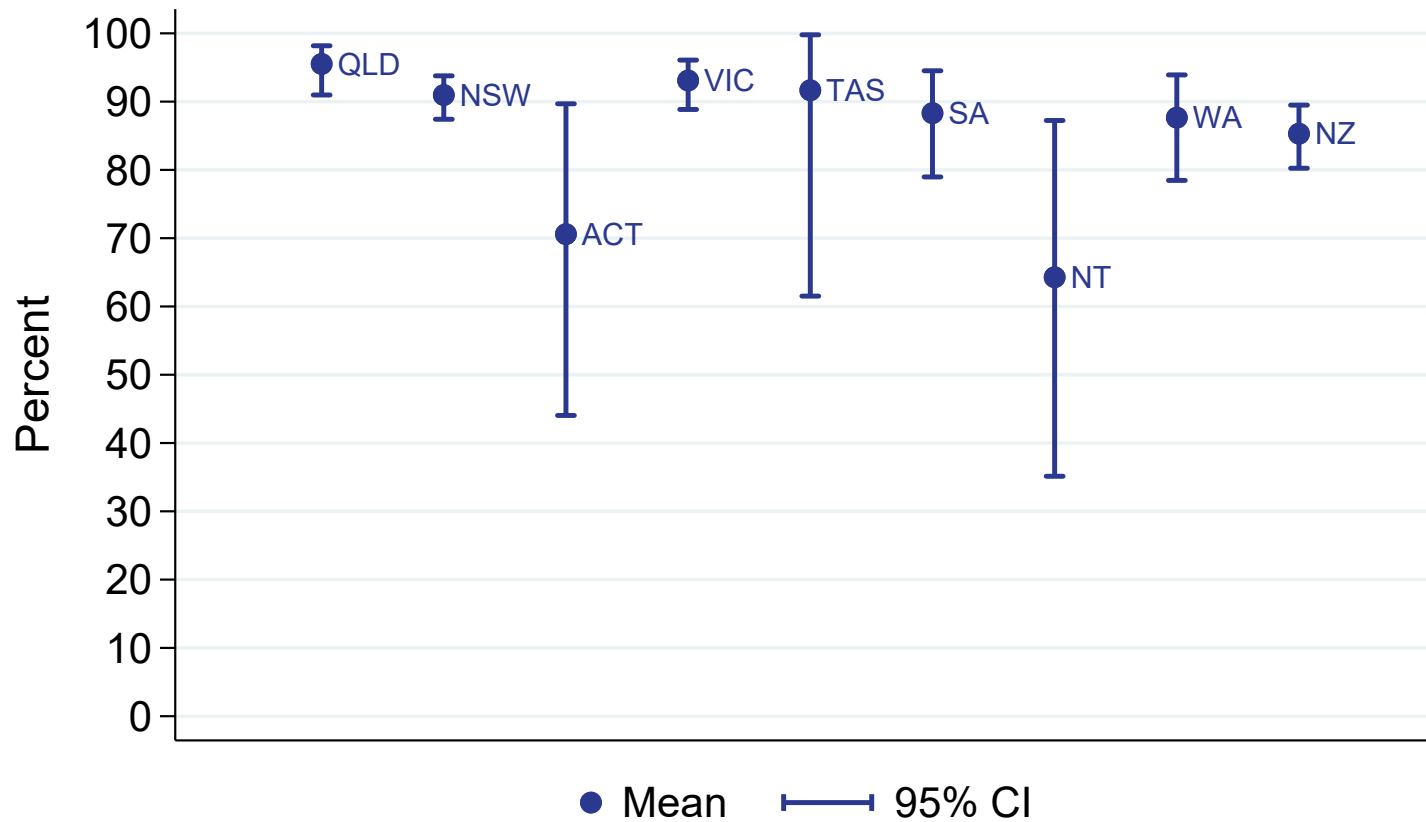
Centre	90-day PD Patients	Started KRT with PD	Did not start KRT with PD	% starting with PD (95 % CI)	Early Referral	% of Early Referrals starting with PD
Middlemore Hospital	40	36	4	90 (76-97)	28	86 (67-96)
Palmerston North Hospital	12	12	0	100 (74-100)	12	100 (74-100)
Taranaki Hospital	4	4	0	100 (40-100)	4	100 (40-100)
Waikato Hospital	62	53	9	85 (74-93)	53	87 (75-95)
Waitemata Renal Service	16	16	0	100 (79-100)	15	100 (78-100)
Wellington Regional Hospital	44	34	10	77 (62-89)	42	81 (66-91)
Whangarei Hospital	10	10	0	100 (69-100)	8	100 (63-100)

PD catheter planning (PD at start)
 % of all PD patients at day 90, Adults
 01 January 2021 - 31 December 2021



All PD patients at day 90 including those late referred

PD catheter planning (PD at start)
% of all PD patients at day 90, Adults
By Jurisdiction, 2021



2.4.2 Paediatric

This table presents the numbers of patients on peritoneal dialysis at day 90 and the percentage starting kidney replacement therapy (KRT) with peritoneal dialysis during the observation window by Centre. Modality changes of less than 30 days are ignored for the determination of modality at day 90. Patients are included in this paediatric report if they were treated at a paediatric hospital. In rare cases when patients younger than 18 years are treated at an adult centre, they are included in the adult report. Any patients 18 years and older treated at a paediatric hospital are included in this report. Finally, the total of Early Referrals (patients seen more than 3 months before first treatment) and the percentage of Early Referrals starting with PD are also presented.

Centre	90-day PD Patients	Started KRT with PD	Did not start KRT with PD	% starting with PD (95 % CI)	Early Referral	% of Early Referrals starting with PD
Australia	24	20	4	83 (63-95)	18	89 (65-99)
Queensland	14	10	4	71 (42-92)	12	83 (52-98)
Child and Adolescent Renal Service	14	10	4	71 (42-92)	12	83 (52-98)
New South Wales	3	3	0	100 (29-100)	1	100 (2-100)
Sydney Children's Hospital	2	2	0	100 (16-100)	0	—
The Children's Hospital at Westmead	1	1	0	100 (2-100)	1	100 (2-100)
Victoria	5	5	0	100 (48-100)	4	100 (40-100)
Monash Children's Centre	2	2	0	100 (16-100)	1	100 (2-100)
Royal Children's Hospital	3	3	0	100 (29-100)	3	100 (29-100)
South Australia	1	1	0	100 (2-100)	1	100 (2-100)
Women's and Children's Hospital	1	1	0	100 (2-100)	1	100 (2-100)
Western Australia	1	1	0	100 (2-100)	0	—
Perth Children's Hospital	1	1	0	100 (2-100)	0	—
New Zealand	4	4	0	100 (40-100)	1	100 (2-100)

continued on next page

continued from previous page

Centre	90-day PD Patients	Started KRT with PD	Did not start KRT with PD	% starting with PD (95 % CI)	Early Referral	% of Early Referrals starting with PD
Starship Children's Hospital	4	4	0	100 (40-100)	1	100 (2-100)

3 Transplantation Wait Listing

3.1 Adult

This table presents the numbers of patients aged <65 years who have received kidney replacement therapy (KRT) for 6 months, and the percentage who are transplanted or on the wait list within 6 months of KRT start during the observation window by Centre. The 6 month follow-up time means these patients commenced KRT between Jul 2020 and Jun 2021. Patients are excluded from this adult report if they were treated at a paediatric hospital. In rare cases when patients younger than 18 years are treated at an adult centre, they are included in this adult report. Any patients 18 years and older treated at a paediatric hospital are excluded from this report. This quality indicator is presented for Australia only as New Zealand transplant wait listing data is not currently available to ANZDATA.

Centre	Patients	Transplanted or on wait list within 6 months	Neither transplanted nor on wait list	% transplanted or on wait list within 6 months (95 % CI)
Australia	1756	304	1452	17 (16-19)
Queensland	363	59	304	16 (13-20)
Bundaberg Hospital	7	0	7	0 (0-41)
Cairns Hospital	38	2	36	5 (1-18)
Chermside Dialysis Centre	8	2	6	25 (3-65)
Gold Coast University Hospital	31	5	26	16 (5-34)
Henry Dalziel Dialysis Clinic - Greenslopes	10	2	8	20 (3-56)
Hervey Bay Hospital	6	1	5	17 (0-64)
Ipswich Hospital	8	0	8	0 (0-37)
John Flynn Private Hospital	2	0	2	0 (0-84)
Mackay Base Hospital	12	0	12	0 (0-26)
Mater Hospital, Brisbane	14	1	13	7 (0-34)
Mater Hospital, Townsville	6	0	6	0 (0-46)
Nambour Selangor Private Hospital	1	0	1	0 (0-98)
Pindara Renal Unit	1	0	1	0 (0-98)
Princess Alexandra Hospital	85	20	65	24 (15-34)
Queensland Kidney Transplant Service	2	2	0	100 (16-100)

continued on next page

continued from previous page

Centre	Patients	Transplanted or on wait list within 6 months	Neither transplanted nor on wait list	% transplanted or on wait list within 6 months (95 % CI)
Rockhampton Hospital	7	3	4	43 (10-82)
Royal Brisbane and Women's Hospital	48	8	40	17 (7-30)
St Andrew's Ipswich Private Hospital	3	0	3	0 (0-71)
Sunshine Coast University Hospital	19	8	11	42 (20-67)
The Wesley Hospital Brisbane	6	1	5	17 (0-64)
Thursday Island Hospital	1	1	0	100 (2-100)
Toowoomba Hospital	19	3	16	16 (3-40)
Townsville University Hospital	29	0	29	0 (0-12)
New South Wales	504	79	425	16 (13-19)
Bathurst Base Hospital	2	0	2	0 (0-84)
Coffs Harbour Hospital	7	2	5	29 (4-71)
Dubbo Base Hospital	8	0	8	0 (0-37)
Gosford Hospital	16	5	11	31 (11-59)
Gregory Hills B.Braun Renal Care Centre	1	1	0	100 (2-100)
John Hunter Hospital	22	1	21	5 (0-23)
Lismore Base Hospital	7	0	7	0 (0-41)
Liverpool Private Dialysis Centre	3	0	3	0 (0-71)
Manning Rural Referral Hospital	4	0	4	0 (0-60)
Mater Hospital, North Sydney	2	0	2	0 (0-84)
Mayo Private Hospital	2	0	2	0 (0-84)
Nepean Hospital	24	2	22	8 (1-27)
Newcastle Dialysis Centre	3	0	3	0 (0-71)
Orange Health Service	11	1	10	9 (0-41)
Port Macquarie Base Hospital	10	1	9	10 (0-45)
Royal North Shore Hospital	32	15	17	47 (29-65)
South West Sydney Renal Service	86	6	80	7 (3-15)
St George Hospital	25	7	18	28 (12-49)

continued on next page

continued from previous page

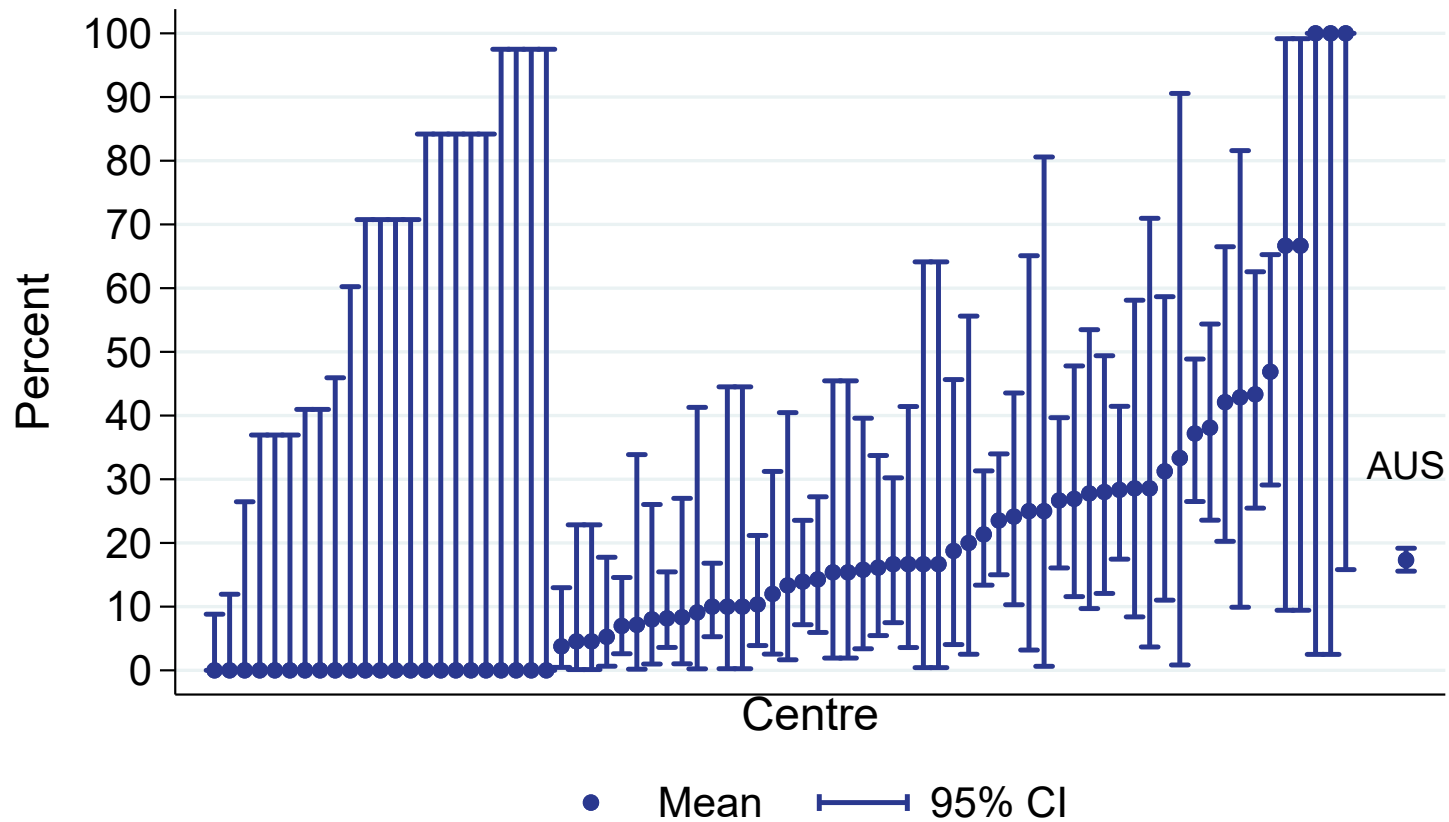
Centre	Patients	Transplanted or on wait list within 6 months	Neither transplanted nor on wait list	% transplanted or on wait list within 6 months (95 % CI)
St Vincent's Hospital Sydney	18	3	15	17 (4-41)
Statewide Renal Services	60	17	43	28 (17-41)
<i>Concord Repatriation General Hospital</i>	<i>16</i>	<i>4</i>	<i>12</i>	<i>25 (7-52)</i>
<i>Griffith Base Hospital</i>	<i>3</i>	<i>0</i>	<i>3</i>	<i>0 (0-71)</i>
<i>Royal Prince Alfred Hospital</i>	<i>32</i>	<i>12</i>	<i>20</i>	<i>38 (21-56)</i>
<i>Wagga Wagga Base Hospital</i>	<i>9</i>	<i>1</i>	<i>8</i>	<i>11 (0-48)</i>
Sydney Adventist Hospital	3	2	1	67 (9-99)
Tamworth Hospital	13	2	11	15 (2-45)
The Prince of Wales Hospital	14	4	10	29 (8-58)
The Tweed Hospital	8	0	8	0 (0-37)
Westmead Hospital	98	8	90	8 (4-15)
Wollongong Hospital	25	2	23	8 (1-26)
Australian Capital Territory	28	3	25	11 (2-28)
Access Nephrology	3	0	3	0 (0-71)
Canberra Hospital	25	3	22	12 (3-31)
Victoria	377	109	268	29 (24-34)
Alfred Hospital	30	13	17	43 (25-63)
Austin Hospital	42	16	26	38 (24-54)
Bendigo Hospital	15	2	13	13 (2-40)
Diamond Valley B.Braun Renal Care Centre	1	0	1	0 (0-98)
Eastern Health Integrated Renal Services	18	5	13	28 (10-53)
Epworth Eastern Hospital	3	1	2	33 (1-91)
Epworth Richmond Hospital	3	2	1	67 (9-99)
Forest Hill Dialysis Centre	1	0	1	0 (0-98)
Malvern Dialysis Centre	4	1	3	25 (1-81)
Monash Medical Centre	78	29	49	37 (26-49)

continued on next page

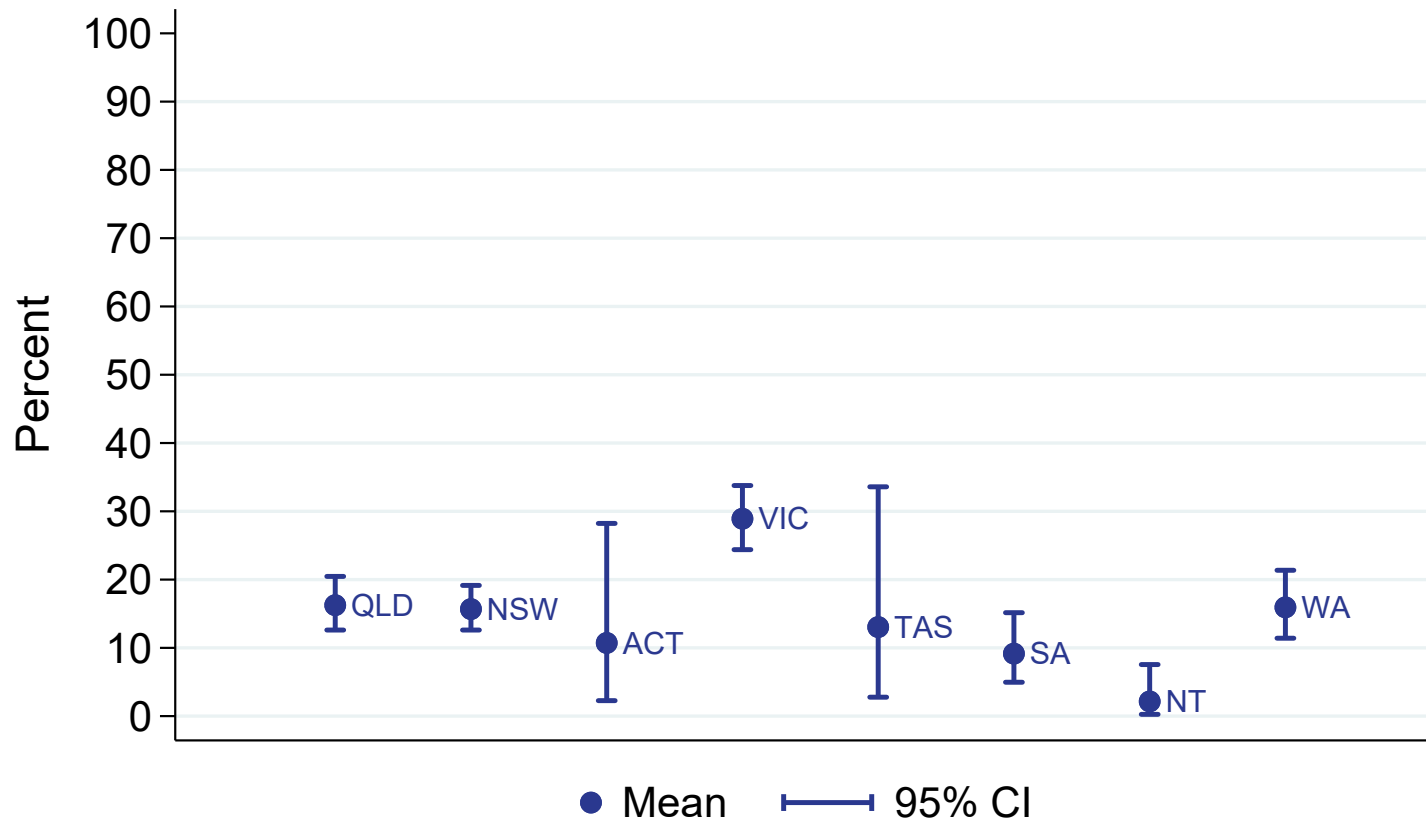
continued from previous page

Centre	Patients	Transplanted or on wait list within 6 months	Neither transplanted nor on wait list	% transplanted or on wait list within 6 months (95 % CI)
Northern Health Service Melbourne	26	7	19	27 (12-48)
St Vincent's Hospital Melbourne	29	7	22	24 (10-44)
Sunshine Private Dialysis Centre Fresenius	2	0	2	0 (0-84)
The Royal Melbourne Hospital	60	16	44	27 (16-40)
University Hospital Geelong Barwon Health	16	3	13	19 (4-46)
Western Health Renal Service	49	7	42	14 (6-27)
Tasmania	23	3	20	13 (3-34)
Launceston General Hospital	13	2	11	15 (2-45)
Royal Hobart Hospital	10	1	9	10 (0-45)
South Australia	142	13	129	9 (5-15)
Central Northern Adelaide Renal Service	120	12	108	10 (5-17)
Flinders Medical Centre	22	1	21	5 (0-23)
Northern Territory	93	2	91	2 (0-8)
Alice Springs Hospital	53	2	51	4 (0-13)
Royal Darwin Hospital	40	0	40	0 (0-9)
Western Australia	226	36	190	16 (11-21)
Fiona Stanley Hospital	89	19	70	21 (13-31)
Royal Perth Hospital	79	11	68	14 (7-24)
Sir Charles Gairdner Hospital	58	6	52	10 (4-21)

Transplantation wait listing (had a tx or on wl within 6 months)
 % of all new adult patients aged <65 years
 Jul 2020 - Jun 2021



Transplantation wait listing (had a tx or on wl within 6 months)
% of all new adult patients aged <65 years
By Jurisdiction, Jul 2020 - Jun 2021



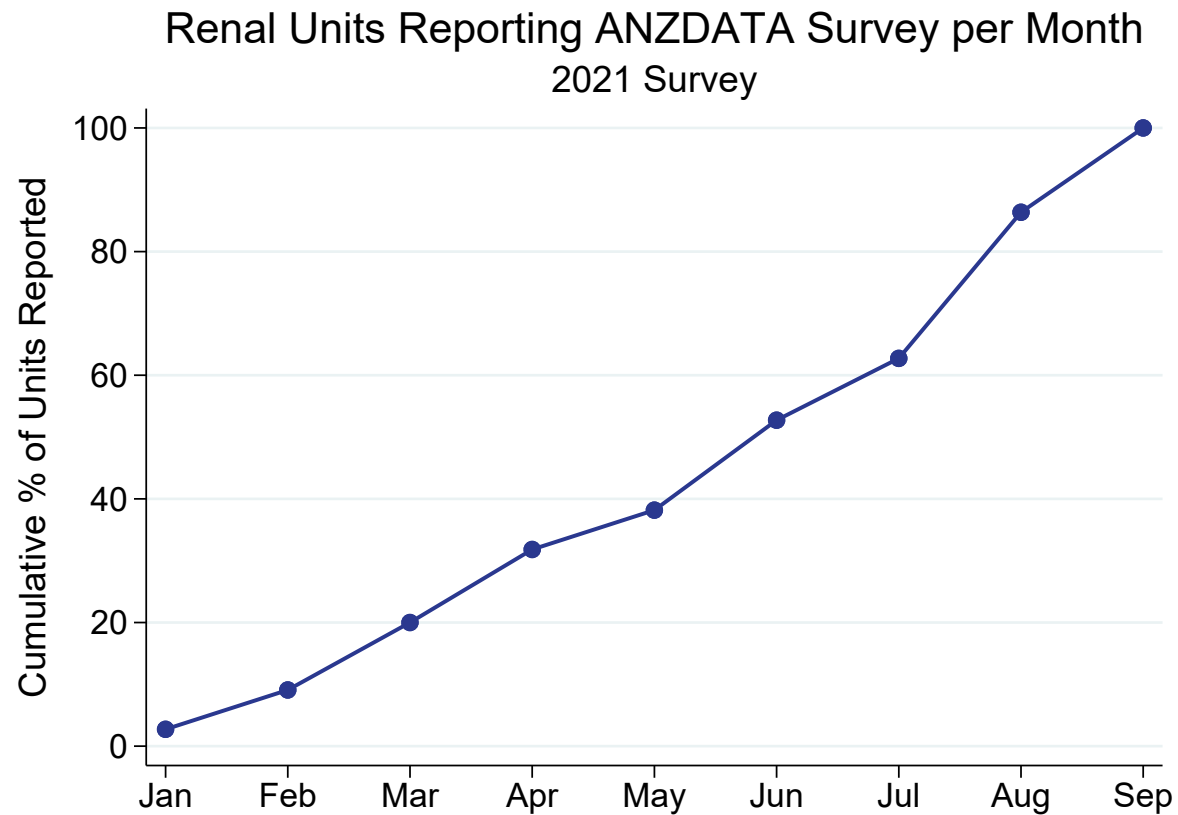
3.2 Paediatric

This table presents the numbers of patients aged ≥ 2 years who have received kidney replacement therapy (KRT) for 6 months, and the percentage who are transplanted or on the wait list within 6 months of KRT start during the observation window by Centre. The 6 month follow-up time means these patients commenced KRT between Jul 2020 and Jun 2021. Patients are included in this paediatric report if they were treated at a paediatric hospital. In rare cases when patients younger than 18 years are treated at an adult centre, they are included in the adult report. Any patients 18 years and older treated at a paediatric hospital are included in this report. This quality indicator is presented for Australia only as New Zealand transplant wait listing data is not currently available to ANZDATA.

Centre	Patients	Transplanted or on wait list within 6 months	Neither transplanted nor on wait list	% transplanted or on wait list within 6 months (95 % CI)
Australia	30	9	21	30 (15-49)
Queensland	11	2	9	18 (2-52)
Child and Adolescent Renal Service	11	2	9	18 (2-52)
New South Wales	7	3	4	43 (10-82)
Sydney Children's Hospital	1	0	1	0 (0-98)
The Children's Hospital at Westmead	6	3	3	50 (12-88)
Victoria	7	3	4	43 (10-82)
Monash Children's Centre	3	0	3	0 (0-71)
Royal Children's Hospital	4	3	1	75 (19-99)
South Australia	4	0	4	0 (0-60)
Women's and Children's Hospital	4	0	4	0 (0-60)
Western Australia	1	1	0	100 (2-100)
Perth Children's Hospital	1	1	0	100 (2-100)

4 ANZDATA annual data survey timeliness

This figure shows the cumulative percentage of renal units that returned their annual ANZDATA survey each month following 31 December 2021. The date of survey return is the date ANZDATA identifies data submitted by the renal unit has reached data validation for completeness of the survey period.



This table presents the month of annual ANZDATA survey return by each renal unit following 31 December 2021.

Centre	Month of return
Queensland	
Bundaberg Hospital	Feb
Cairns Hospital	Apr
Cairns Private Hospital	Jan
Chermside Dialysis Centre	Jul
Child and Adolescent Renal Service	Apr
Cooktown Multipurpose Health Service	Feb
Gold Coast Private Hospital	Aug
Gold Coast University Hospital	Aug
Henry Dalziel Dialysis Clinic - Greenslopes	Jul
Hervey Bay Hospital	Apr
Ipswich Hospital	Aug
John Flynn Private Hospital	Jun
Mackay Base Hospital	Feb
Mater Hospital, Brisbane	May
Mater Hospital, Townsville	Aug
Morayfield B.Braun Renal Care Centre	Feb
Mount Isa Base Hospital	Jun
Nambour Selangor Private Hospital	May
North Lakes Dialysis Centre	Mar
Pindara Renal Unit	Sep
Princess Alexandra Hospital	Mar
Queensland Kidney Transplant Service	Mar
Rockhampton Hospital	Sep
Royal Brisbane and Women's Hospital	Aug
St Andrew's Ipswich Private Hospital	Jun
St Andrew's Toowoomba B.Braun'S Dialysis Clinic	Aug
Sunshine Coast University Hospital	Mar
Sunshine Coast University Private Hospital	Jun

continued on next page

continued from previous page

Centre	Month of return
The Wesley Hospital Brisbane	Sep
Thursday Island Hospital	Mar
Toowoomba Hospital	Mar
Townsville University Hospital	Sep
New South Wales	
Bathurst Base Hospital	Jul
Coffs Harbour Hospital	Sep
Concord Repatriation General Hospital	Sep
Dubbo Base Hospital	Aug
Gosford Hospital	Aug
Gregory Hills B.Braun Renal Care Centre	Mar
Griffith Base Hospital	Aug
John Hunter Hospital	Jul
Lismore Base Hospital	Apr
Liverpool Private Dialysis Centre	May
Manning Rural Referral Hospital	Jul
Mater Hospital, North Sydney	Jun
Mayo Private Hospital	Aug
Nepean Hospital	Jul
Newcastle Dialysis Centre	Apr
Orange Health Service	Aug
Port Macquarie Base Hospital	May
Port Macquarie Private Hospital	Apr
Royal North Shore Hospital	Aug
Royal Prince Alfred Hospital	Jun
South West Sydney Renal Service	Sep
St George Hospital	Apr
St Vincent's Hospital Sydney	Jun
St Vincent's Lismore Private Dialysis Centre	Feb
Sydney Adventist Hospital	Apr

continued on next page

continued from previous page

Centre	Month of return
Sydney Children's Hospital	Apr
Tamworth Hospital	May
The Children's Hospital at Westmead	Sep
The Prince of Wales Hospital	Aug
The Tweed Hospital	Jul
Wagga Wagga Base Hospital	Aug
Westmead Hospital	Jul
Wollongong Hospital	Jun
Australian Capital Territory	
Access Nephrology	Jun
Canberra Hospital	Mar
Victoria	
Alfred Hospital	Aug
Austin Hospital	Jun
Bendigo Hospital	Sep
Diamond Valley B.Braun Renal Care Centre	Apr
Eastern Health Integrated Renal Services	Jun
Epworth Eastern Hospital	Feb
Epworth Geelong Hospital	Jun
Epworth Richmond Hospital	Jun
Forest Hill Dialysis Centre	Mar
Malvern Dialysis Centre	Jan
Monash Children's Centre	Jan
Monash Medical Centre	Jun
North Melbourne B.Braun Renal Care Centre	Mar
Northern Health Service Melbourne	Jul
Royal Children's Hospital	Mar
St Vincent's Hospital Melbourne	Aug
Sunshine Private Dialysis Centre Fresenius	Jun

continued on next page

continued from previous page

Centre	Month of return
The Royal Melbourne Hospital	Aug
University Hospital Geelong Barwon Health	Jul
Western Health Renal Service	Aug
Tasmania	
Launceston General Hospital	Jun
Royal Hobart Hospital	May
South Australia	
Central Northern Adelaide Renal Service	Aug
Flinders Medical Centre	Apr
Women's and Children's Hospital	Apr
Northern Territory	
Alice Springs Hospital	Aug
Royal Darwin Hospital	Sep
Western Australia	
Fiona Stanley Hospital	Sep
Perth Children's Hospital	Apr
Royal Perth Hospital	Sep
Sir Charles Gairdner Hospital	Jul
New Zealand	
Auckland City Hospital	Aug
Christchurch Hospital	Mar
Dunedin Hospital	Aug
Hawkes Bay Hospital	Aug
Middlemore Hospital	Sep
Palmerston North Hospital	Sep
Starship Children's Hospital	Feb

continued on next page

continued from previous page

Centre	Month of return
Taranaki Hospital	Aug
Waikato Hospital	Aug
Waitemata Renal Service	Sep
Wellington Regional Hospital	Aug
Whangarei Hospital	May

5 Kidney Replacement Therapy (KRT) Modality

5.1 Incident Modality

5.1.1 Adult

This table presents the numbers (N) of incident kidney replacement therapy (KRT) patients during the observation window by modality at commencement and centre. Modality is categorised as pre-emptive kidney transplant (TX), peritoneal dialysis (PD), home haemodialysis (including commencing training) and community house haemodialysis (HHD*) and facility haemodialysis (FacHD). Also presented are the percentages (%) of each modality out of the total incident KRT cohort. Patients are excluded from this adult report if they were treated at a paediatric hospital. In rare cases when patients younger than 18 years are treated at an adult centre, they are included in this adult report. Any patients 18 years and older treated at a paediatric hospital are excluded from this report.

Centre	N KRT	N TX	% TX	N PD	% PD	N HHD*	% HHD*	N FacHD	% FacHD
Australia	3240	73	2	877	27	51	2	2239	69
Queensland	691	13	2	165	24	11	2	502	73
Bundaberg Hospital	15	0	0	3	20	0	0	12	80
Cairns Hospital	72	0	0	12	17	1	1	59	82
Cairns Private Hospital	5	0	0	0	0	0	0	5	100
Chermside Dialysis Centre	13	0	0	0	0	0	0	13	100
Gold Coast Private Hospital	5	0	0	0	0	0	0	5	100
Gold Coast University Hospital	64	0	0	22	34	1	2	41	64
Henry Dalziel Dialysis Clinic - Greenslopes	34	1	3	0	0	0	0	33	97
Hervey Bay Hospital	18	0	0	8	44	0	0	10	56
Ipswich Hospital	10	0	0	0	0	0	0	10	100
John Flynn Private Hospital	16	0	0	0	0	0	0	16	100
Mackay Base Hospital	24	0	0	3	12	1	4	20	83
Mater Hospital, Brisbane	16	0	0	0	0	0	0	16	100
Mater Hospital, Townsville	8	0	0	0	0	0	0	8	100
Morayfield B.Braun Renal Care Centre	1	0	0	0	0	0	0	1	100
Nambour Selangor Private Hospital	1	0	0	0	0	0	0	1	100
North Lakes Dialysis Centre	13	0	0	0	0	0	0	13	100
Pindara Renal Unit	7	0	0	0	0	0	0	7	100

continued on next page

continued from previous page

Centre	N KRT	N TX	% TX	N PD	% PD	N HHD*	% HHD*	N FacHD	% FacHD
Princess Alexandra Hospital	126	8	6	63	50	8	6	47	37
Queensland Kidney Transplant Service	2	2	100	0	0	0	0	0	0
Rockhampton Hospital	19	1	5	0	0	0	0	18	95
Royal Brisbane and Women's Hospital	67	1	1	20	30	0	0	46	69
St Andrew's Ipswich Private Hospital	9	0	0	0	0	0	0	9	100
St Andrew's Toowoomba B.Braun'S Dialysis Clinic	8	0	0	0	0	0	0	8	100
Sunshine Coast University Hospital	36	0	0	6	17	0	0	30	83
Sunshine Coast University Private Hospital	9	0	0	0	0	0	0	9	100
The Wesley Hospital Brisbane	9	0	0	0	0	0	0	9	100
Toowoomba Hospital	26	0	0	15	58	0	0	11	42
Townsville University Hospital	58	0	0	13	22	0	0	45	78
New South Wales	947	19	2	316	33	25	3	587	62
Bathurst Base Hospital	6	0	0	0	0	0	0	6	100
Coffs Harbour Hospital	10	0	0	0	0	0	0	10	100
Dubbo Base Hospital	7	0	0	0	0	0	0	7	100
Gosford Hospital	47	1	2	8	17	0	0	38	81
Gregory Hills B.Braun Renal Care Centre	2	0	0	0	0	0	0	2	100
John Hunter Hospital	55	0	0	14	25	4	7	37	67
Lismore Base Hospital	24	1	4	5	21	0	0	18	75
Liverpool Private Dialysis Centre	2	0	0	0	0	0	0	2	100
Manning Rural Referral Hospital	11	0	0	5	45	0	0	6	55
Mater Hospital, North Sydney	7	0	0	0	0	0	0	7	100
Mayo Private Hospital	3	0	0	0	0	0	0	3	100
Nepean Hospital	40	0	0	16	40	0	0	24	60
Newcastle Dialysis Centre	4	0	0	0	0	0	0	4	100
Orange Health Service	16	0	0	8	50	0	0	8	50
Port Macquarie Base Hospital	21	0	0	0	0	0	0	21	100
Royal North Shore Hospital	70	4	6	23	33	2	3	41	59
South West Sydney Renal Service	157	0	0	68	43	8	5	81	52
St George Hospital	46	0	0	12	26	3	7	31	67

continued on next page

continued from previous page

Centre	N KRT	N TX	% TX	N PD	% PD	N HHD*	% HHD*	N FacHD	% FacHD
St Vincent's Hospital Sydney	36	0	0	5	14	0	0	31	86
St Vincent's Lismore Private Dialysis Centre	4	0	0	0	0	0	0	4	100
Statewide Renal Services	107	3	3	38	36	0	0	66	62
<i>Concord Repatriation General Hospital</i>	<i>35</i>	<i>1</i>	<i>3</i>	<i>17</i>	<i>49</i>	<i>0</i>	<i>0</i>	<i>17</i>	<i>49</i>
<i>Griffith Base Hospital</i>	<i>5</i>	<i>0</i>	<i>0</i>	<i>1</i>	<i>20</i>	<i>0</i>	<i>0</i>	<i>4</i>	<i>80</i>
<i>Royal Prince Alfred Hospital</i>	<i>46</i>	<i>2</i>	<i>4</i>	<i>14</i>	<i>30</i>	<i>0</i>	<i>0</i>	<i>30</i>	<i>65</i>
<i>Wagga Wagga Base Hospital</i>	<i>21</i>	<i>0</i>	<i>0</i>	<i>6</i>	<i>29</i>	<i>0</i>	<i>0</i>	<i>15</i>	<i>71</i>
Sydney Adventist Hospital	7	0	0	0	0	0	0	7	100
Tamworth Hospital	23	0	0	9	39	0	0	14	61
The Prince of Wales Hospital	26	3	12	10	38	0	0	13	50
The Tweed Hospital	10	0	0	2	20	0	0	8	80
Westmead Hospital	159	7	4	74	47	6	4	72	45
Wollongong Hospital	47	0	0	19	40	2	4	26	55
Australian Capital Territory	71	0	0	7	10	3	4	61	86
Access Nephrology	6	0	0	0	0	0	0	6	100
Canberra Hospital	65	0	0	7	11	3	5	55	85
Victoria	759	23	3	203	27	4	0	529	70
Alfred Hospital	62	4	6	23	37	0	0	35	56
Austin Hospital	69	5	7	15	22	1	1	48	70
Bendigo Hospital	24	0	0	10	42	0	0	14	58
Diamond Valley B.Braun Renal Care Centre	3	0	0	0	0	0	0	3	100
Eastern Health Integrated Renal Services	46	1	2	11	24	0	0	34	74
Epworth Eastern Hospital	7	0	0	0	0	0	0	7	100
Epworth Richmond Hospital	7	0	0	0	0	0	0	7	100
Forest Hill Dialysis Centre	2	0	0	0	0	0	0	2	100
Malvern Dialysis Centre	15	0	0	0	0	0	0	15	100
Monash Medical Centre	152	7	5	34	22	0	0	111	73
Northern Health Service Melbourne	46	0	0	11	24	0	0	35	76
St Vincent's Hospital Melbourne	54	0	0	19	35	0	0	35	65

continued on next page

continued from previous page

Centre	N KRT	N TX	% TX	N PD	% PD	N HHD*	% HHD*	N FacHD	% FacHD
Sunshine Private Dialysis Centre Fresenius	1	0	0	0	0	0	0	1	100
The Royal Melbourne Hospital	137	5	4	38	28	2	1	92	67
University Hospital Geelong Barwon Health	37	1	3	7	19	0	0	29	78
Western Health Renal Service	97	0	0	35	36	1	1	61	63
Tasmania	58	0	0	16	28	0	0	42	72
Launceston General Hospital	28	0	0	11	39	0	0	17	61
Royal Hobart Hospital	30	0	0	5	17	0	0	25	83
South Australia	231	12	5	65	28	0	0	154	67
Central Northern Adelaide Renal Service	177	11	6	56	32	0	0	110	62
Flinders Medical Centre	54	1	2	9	17	0	0	44	81
Northern Territory	118	0	0	12	10	0	0	106	90
Alice Springs Hospital	44	0	0	0	0	0	0	44	100
Royal Darwin Hospital	74	0	0	12	16	0	0	62	84
Western Australia	365	6	2	93	25	8	2	258	71
Fiona Stanley Hospital	142	3	2	24	17	2	1	113	80
Royal Perth Hospital	113	1	1	26	23	2	2	84	74
Sir Charles Gairdner Hospital	110	2	2	43	39	4	4	61	55
New Zealand	701	38	5	237	34	13	2	413	59
Auckland City Hospital	74	3	4	21	28	4	5	46	62
Christchurch Hospital	54	12	22	16	30	0	0	26	48
Dunedin Hospital	28	2	7	10	36	0	0	16	57
Hawkes Bay Hospital	12	0	0	2	17	0	0	10	83
Middlemore Hospital	151	3	2	39	26	4	3	105	70
Palmerston North Hospital	38	0	0	14	37	1	3	23	61
Taranaki Hospital	11	0	0	6	55	0	0	5	45
Waikato Hospital	129	6	5	62	48	0	0	61	47

continued on next page

continued from previous page

Centre	N KRT	N TX	% TX	N PD	% PD	N HHD*	% HHD*	N FacHD	% FacHD
Waitemata Renal Service	79	4	5	17	22	3	4	55	70
Wellington Regional Hospital	90	7	8	38	42	1	1	44	49
Whangarei Hospital	35	1	3	12	34	0	0	22	63

5.1.2 Paediatric

This table presents the numbers (N) of incident kidney replacement therapy (KRT) patients during the observation window by modality at commencement and centre. Modality is categorised as pre-emptive kidney transplant (TX), peritoneal dialysis (PD), home haemodialysis (including commencing training) and community house haemodialysis (HHD*) and facility haemodialysis (FacHD). Also presented are the percentages (%) of each modality out of the total incident KRT cohort. Patients are included in this paediatric report if they were treated at a paediatric hospital. In rare cases when patients younger than 18 years are treated at an adult centre, they are included in the adult report. Any patients 18 years and older treated at a paediatric hospital are included in this report.

Centre	N KRT	N TX	% TX	N PD	% PD	N HHD*	% HHD*	N FacHD	% FacHD
Australia	41	9	22	16	39	0	0	16	39
Queensland	15	2	13	7	47	0	0	6	40
Child and Adolescent Renal Service	15	2	13	7	47	0	0	6	40
New South Wales	8	3	38	1	12	0	0	4	50
Sydney Children's Hospital	2	0	0	1	50	0	0	1	50
The Children's Hospital at Westmead	6	3	50	0	0	0	0	3	50
Victoria	10	3	30	5	50	0	0	2	20
Monash Children's Centre	4	1	25	2	50	0	0	1	25
Royal Children's Hospital	6	2	33	3	50	0	0	1	17
South Australia	5	0	0	1	20	0	0	4	80
Women's and Children's Hospital	5	0	0	1	20	0	0	4	80
Western Australia	3	1	33	2	67	0	0	0	0
Perth Children's Hospital	3	1	33	2	67	0	0	0	0
New Zealand	7	1	14	4	57	0	0	2	29
Starship Children's Hospital	7	1	14	4	57	0	0	2	29

5.2 Prevalent Modality

5.2.1 Adult

This table presents the numbers (N) of prevalent kidney replacement therapy (KRT) patients at the end of the observation window by modality and centre. Modality is categorised as functioning kidney transplant (TX), peritoneal dialysis (PD), home haemodialysis including community house haemodialysis (HHD*) and facility haemodialysis (FacHD). Also presented are the percentages (%) of each modality out of the total prevalent KRT cohort. Patients are excluded from this adult report if they were treated at a paediatric hospital. In rare cases when patients younger than 18 years are treated at an adult centre, they are included in this adult report. Any patients 18 years and older treated at a paediatric hospital are excluded from this report.

Centre	N KRT	N TX	% TX	N PD	% PD	N HHD*	% HHD*	N FacHD	% FacHD
Australia	28231	13095	46	2627	9	1142	4	11367	40
Queensland	5557	2483	45	464	8	246	4	2364	43
Bundaberg Hospital	143	70	49	11	8	2	1	60	42
Cairns Hospital	473	128	27	35	7	30	6	280	59
Cairns Private Hospital	25	0	0	0	0	0	0	25	100
Chermside Dialysis Centre	69	23	33	0	0	0	0	46	67
Cooktown Multipurpose Health Service	16	0	0	0	0	0	0	16	100
Gold Coast Private Hospital	34	0	0	0	0	0	0	34	100
Gold Coast University Hospital	489	242	49	50	10	31	6	166	34
Henry Dalziel Dialysis Clinic - Greenslopes	165	62	38	0	0	0	0	103	62
Hervey Bay Hospital	119	40	34	12	10	0	0	67	56
Ipswich Hospital	71	10	14	0	0	0	0	61	86
John Flynn Private Hospital	103	66	64	0	0	0	0	37	36
Mackay Base Hospital	161	61	38	18	11	0	0	82	51
Mater Hospital, Brisbane	112	37	33	0	0	0	0	75	67
Mater Hospital, Townsville	35	0	0	0	0	0	0	35	100
Morayfield B.Braun Renal Care Centre	8	0	0	0	0	0	0	8	100
Mount Isa Base Hospital	38	10	26	0	0	0	0	28	74
Nambour Selangor Private Hospital	16	0	0	0	0	0	0	16	100
North Lakes Dialysis Centre	32	0	0	0	0	0	0	32	100

continued on next page

continued from previous page

Centre	N KRT	N TX	% TX	N PD	% PD	N HHD*	% HHD*	N FacHD	% FacHD
Pindara Renal Unit	26	0	0	0	0	0	0	26	100
Princess Alexandra Hospital	521	0	0	162	31	79	15	280	54
Queensland Kidney Transplant Service	867	867	100	0	0	0	0	0	0
Rockhampton Hospital	181	70	39	18	10	4	2	89	49
Royal Brisbane and Women's Hospital	589	212	36	74	13	46	8	257	44
St Andrew's Ipswich Private Hospital	36	0	0	0	0	0	0	36	100
St Andrew's Toowoomba B.Braun'S Dialysis Clinic	19	0	0	0	0	0	0	19	100
Sunshine Coast University Hospital	389	234	60	10	3	13	3	132	34
Sunshine Coast University Private Hospital	27	0	0	0	0	0	0	27	100
The Wesley Hospital Brisbane	170	122	72	0	0	0	0	48	28
Thursday Island Hospital	15	0	0	0	0	0	0	15	100
Toowoomba Hospital	252	120	48	29	12	27	11	76	30
Townsville University Hospital	356	109	31	45	13	14	4	188	53
New South Wales	8159	3635	45	1032	13	441	5	3051	37
Bathurst Base Hospital	31	12	39	0	0	0	0	19	61
Coffs Harbour Hospital	131	63	48	3	2	7	5	58	44
Dubbo Base Hospital	134	60	45	10	7	5	4	59	44
Gosford Hospital	318	123	39	21	7	10	3	164	52
Gregory Hills B.Braun Renal Care Centre	24	0	0	0	0	0	0	24	100
John Hunter Hospital	626	362	58	60	10	29	5	175	28
Lismore Base Hospital	194	93	48	13	7	9	5	79	41
Liverpool Private Dialysis Centre	32	0	0	0	0	0	0	32	100
Manning Rural Referral Hospital	86	23	27	11	13	1	1	51	59
Mater Hospital, North Sydney	73	37	51	0	0	0	0	36	49
Mayo Private Hospital	19	0	0	0	0	0	0	19	100
Nepean Hospital	303	133	44	45	15	3	1	122	40
Newcastle Dialysis Centre	52	0	0	0	0	0	0	52	100
Orange Health Service	100	38	38	16	16	1	1	45	45
Port Macquarie Base Hospital	113	40	35	10	9	5	4	58	51
Port Macquarie Private Hospital	12	0	0	0	0	0	0	12	100

continued on next page

continued from previous page

Centre	N KRT	N TX	% TX	N PD	% PD	N HHD*	% HHD*	N FacHD	% FacHD
Royal North Shore Hospital	658	340	52	49	7	45	7	224	34
South West Sydney Renal Service	1169	434	37	241	21	73	6	421	36
St George Hospital	488	235	48	42	9	36	7	175	36
St Vincent's Hospital Sydney	238	123	52	18	8	25	11	72	30
St Vincent's Lismore Private Dialysis Centre	20	0	0	0	0	0	0	20	100
Statewide Renal Services	1069	547	51	112	10	71	7	339	32
<i>Concord Repatriation General Hospital</i>	<i>290</i>	<i>110</i>	<i>38</i>	<i>48</i>	<i>17</i>	<i>20</i>	<i>7</i>	<i>112</i>	<i>39</i>
<i>Griffith Base Hospital</i>	<i>48</i>	<i>16</i>	<i>33</i>	<i>4</i>	<i>8</i>	<i>0</i>	<i>0</i>	<i>28</i>	<i>58</i>
<i>Royal Prince Alfred Hospital</i>	<i>611</i>	<i>376</i>	<i>62</i>	<i>47</i>	<i>8</i>	<i>46</i>	<i>8</i>	<i>142</i>	<i>23</i>
<i>Wagga Wagga Base Hospital</i>	<i>120</i>	<i>45</i>	<i>38</i>	<i>13</i>	<i>11</i>	<i>5</i>	<i>4</i>	<i>57</i>	<i>48</i>
Sydney Adventist Hospital	40	0	0	0	0	0	0	40	100
Tamworth Hospital	160	67	42	21	13	5	3	67	42
The Prince of Wales Hospital	299	170	57	29	10	4	1	96	32
The Tweed Hospital	74	8	11	11	15	0	0	55	74
Westmead Hospital	1297	563	43	269	21	96	7	369	28
Wollongong Hospital	399	164	41	51	13	16	4	168	42
Australian Capital Territory	610	296	49	38	6	29	5	247	40
Access Nephrology	103	81	79	0	0	0	0	22	21
Canberra Hospital	507	215	42	38	7	29	6	225	44
Victoria	7312	3783	52	607	8	241	3	2681	37
Alfred Hospital	554	300	54	71	13	8	1	175	32
Austin Hospital	703	432	61	35	5	31	4	205	29
Bendigo Hospital	153	36	24	42	27	0	0	75	49
Diamond Valley B.Braun Renal Care Centre	47	0	0	0	0	0	0	47	100
Eastern Health Integrated Renal Services	438	183	42	40	9	19	4	196	45
Epworth Eastern Hospital	54	0	0	0	0	0	0	54	100
Epworth Geelong Hospital	17	0	0	0	0	0	0	17	100
Epworth Richmond Hospital	43	0	0	0	0	0	0	43	100
Forest Hill Dialysis Centre	63	0	0	0	0	0	0	63	100

continued on next page

continued from previous page

Centre	N KRT	N TX	% TX	N PD	% PD	N HHD*	% HHD*	N FacHD	% FacHD
Malvern Dialysis Centre	75	0	0	0	0	0	0	75	100
Monash Medical Centre	1715	1012	59	113	7	75	4	515	30
North Melbourne B.Braun Renal Care Centre	25	0	0	0	0	0	0	25	100
Northern Health Service Melbourne	224	58	26	36	16	7	3	123	55
St Vincent's Hospital Melbourne	575	277	48	63	11	13	2	222	39
Sunshine Private Dialysis Centre Fresenius	23	0	0	0	0	0	0	23	100
The Royal Melbourne Hospital	1787	1208	68	95	5	42	2	442	25
University Hospital Geelong Barwon Health	331	171	52	24	7	28	8	108	33
Western Health Renal Service	485	106	22	88	18	18	4	273	56
Tasmania	533	307	58	43	8	9	2	174	33
Launceston General Hospital	277	145	52	32	12	7	3	93	34
Royal Hobart Hospital	256	162	63	11	4	2	1	81	32
South Australia	2148	1134	53	148	7	31	1	835	39
Central Northern Adelaide Renal Service	1660	895	54	117	7	28	2	620	37
Flinders Medical Centre	488	239	49	31	6	3	1	215	44
Northern Territory	945	150	16	56	6	43	5	696	74
Alice Springs Hospital	454	49	11	4	1	17	4	384	85
Royal Darwin Hospital	491	101	21	52	11	26	5	312	64
Western Australia	2967	1307	44	239	8	102	3	1319	44
Fiona Stanley Hospital	1140	547	48	62	5	36	3	495	43
Royal Perth Hospital	856	278	32	69	8	32	4	477	56
Sir Charles Gairdner Hospital	971	482	50	108	11	34	4	347	36
New Zealand	5389	2245	42	802	15	392	7	1950	36
Auckland City Hospital	656	270	41	53	8	55	8	278	42
Christchurch Hospital	477	331	69	73	15	30	6	43	9
Dunedin Hospital	230	129	56	37	16	43	19	21	9

continued on next page

continued from previous page

Centre	N KRT	N TX	% TX	N PD	% PD	N HHD*	% HHD*	N FacHD	% FacHD
Hawkes Bay Hospital	187	93	50	20	11	10	5	64	34
Middlemore Hospital	991	276	28	145	15	73	7	497	50
Palmerston North Hospital	321	97	30	40	12	17	5	167	52
Taranaki Hospital	111	53	48	23	21	5	5	30	27
Waikato Hospital	893	305	34	234	26	71	8	283	32
Waitemata Renal Service	588	256	44	47	8	45	8	240	41
Wellington Regional Hospital	640	323	50	92	14	27	4	198	31
Whangarei Hospital	295	112	38	38	13	16	5	129	44

5.2.2 Paediatric

This table presents the numbers (N) of prevalent kidney replacement therapy (KRT) patients at the end of the observation window by modality and centre. Modality is categorised as functioning kidney transplant (TX), peritoneal dialysis (PD), home haemodialysis including community house haemodialysis (HHD*) and facility haemodialysis (FacHD). Also presented are the percentages (%) of each modality out of the total prevalent KRT cohort. Patients are included in this paediatric report if they were treated at a paediatric hospital. In rare cases when patients younger than 18 years are treated at an adult centre, they are included in the adult report. Any patients 18 years and older treated at a paediatric hospital are included in this report.

Centre	N KRT	N TX	% TX	N PD	% PD	N HHD*	% HHD*	N FacHD	% FacHD
Australia	311	254	82	40	13	0	0	17	5
Queensland	75	53	71	20	27	0	0	2	3
Child and Adolescent Renal Service	75	53	71	20	27	0	0	2	3
New South Wales	109	100	92	6	6	0	0	3	3
Sydney Children's Hospital	30	27	90	3	10	0	0	0	0
The Children's Hospital at Westmead	79	73	92	3	4	0	0	3	4
Victoria	83	68	82	9	11	0	0	6	7
Monash Children's Centre	24	17	71	2	8	0	0	5	21
Royal Children's Hospital	59	51	86	7	12	0	0	1	2
South Australia	22	15	68	4	18	0	0	3	14
Women's and Children's Hospital	22	15	68	4	18	0	0	3	14
Western Australia	22	18	82	1	5	0	0	3	14
Perth Children's Hospital	22	18	82	1	5	0	0	3	14
New Zealand	63	52	83	8	13	0	0	3	5
Starship Children's Hospital	63	52	83	8	13	0	0	3	5