



# Quality Indicators

## Annual Report

**01 January 2022 - 31 December 2022**

## Analysis Database

PUBLISHED 12 October 2023 - REVISED 30 January 2024

The release of the Quality Indicator report is now an ANZDATA/ANZSN co-badged report. This information is provided as it is reported to ANZDATA. The reporting arrangements provide additional information to units on quality indicators. Units should use these data to monitor clinical practice and outcomes.

# Contents

<b>1</b>	<b>Incidence of Peritonitis in Patients Treated with Peritoneal Dialysis</b>	<b>2</b>
1.1	Adult . . . . .	2
1.2	Paediatric . . . . .	6
<b>2</b>	<b>Dialysis Access Planning at Commencement of Dialysis</b>	<b>7</b>
2.1	All Dialysis Access Planning . . . . .	7
2.1.1	Adult . . . . .	7
2.1.2	Paediatric . . . . .	13
2.2	Vascular Access at First Haemodialysis . . . . .	14
2.2.1	Adult . . . . .	14
2.2.2	Paediatric . . . . .	20
2.3	HD Vascular Access Planning . . . . .	21
2.3.1	Adult . . . . .	21
2.3.2	Paediatric . . . . .	26
2.4	PD Catheter Planning . . . . .	27
2.4.1	Adult . . . . .	27
2.4.2	Paediatric . . . . .	31
<b>3</b>	<b>Transplantation Wait Listing</b>	<b>32</b>
3.1	Adult . . . . .	32
3.2	Paediatric . . . . .	37
<b>4</b>	<b>ANZDATA annual data survey timeliness</b>	<b>38</b>
<b>5</b>	<b>Kidney Replacement Therapy (KRT) Modality</b>	<b>42</b>
5.1	Incident Modality . . . . .	42
5.1.1	Adult . . . . .	42
5.1.2	Paediatric . . . . .	46
5.2	Prevalent Modality . . . . .	47
5.2.1	Adult . . . . .	47
5.2.2	Paediatric . . . . .	51

# 1 Incidence of Peritonitis in Patients Treated with Peritoneal Dialysis

## 1.1 Adult

This table presents the total number of peritonitis episodes and patient exposure in years by Centre. Patient totals, exposure and peritonitis episodes were determined using the hospital at which the patient was receiving treatment at the time. So, if a patient transferred units during the observation period, the subsequent exposure and peritonitis episodes were allocated to the new unit. Months per episode (PM per Episode) is also reported. This should be interpreted as the average number of months between episodes of peritonitis; it can not be calculated if the peritonitis rate is zero. Patients are excluded from this adult report if they were treated at a paediatric hospital. In rare cases when patients younger than 18 years are treated at an adult centre, they are included in this adult report. Any patients 18 years and older treated at a paediatric hospital are excluded from this report. This quality indicator is presented for Australia only as New Zealand peritonitis episode data is reported through the New Zealand Peritoneal Dialysis Registry.

\*Due to a revision of analysis data for the period 2020 to 2022, the rate of peritonitis has been updated in this report, superseding previously reported number of episodes and rates of peritonitis.

Centre	PD Patients	*No of Episodes	Person Years	*Rate (95% CI)	*PM per Episode (95% CI)
<b>Australia</b>	<b>3801</b>	<b>780</b>	<b>2645.79</b>	<b>0.29 (0.27-0.32)</b>	<b>40.70 (37.95-43.72)</b>
<b>Queensland</b>	<b>667</b>	<b>154</b>	<b>465.69</b>	<b>0.33 (0.28-0.39)</b>	<b>36.29 (30.99-42.78)</b>
Bundaberg Hospital	15	0	9.90	0.00 (0.00-0.37)	. (32.21-.)
Cairns Hospital	55	12	37.32	0.32 (0.17-0.56)	37.32 (21.36-72.22)
Gold Coast University Hospital	72	15	48.73	0.31 (0.17-0.51)	38.98 (23.63-69.65)
Hervey Bay Hospital	18	8	13.53	0.59 (0.26-1.16)	20.30 (10.30-47.02)
Ipswich Hospital	9	1	1.60	0.62 (0.02-3.47)	19.25 (3.46-760.44)
Mackay Base Hospital	22	3	14.89	0.20 (0.04-0.59)	59.56 (20.38-288.83)
Mount Isa Base Hospital	1	0	0.02	0.00 (0.00-224.56)	. (0.05-.)
Princess Alexandra Hospital	221	52	165.09	0.31 (0.24-0.41)	38.10 (29.05-51.01)
Rockhampton Hospital	15	0	11.66	0.00 (0.00-0.32)	. (37.92-.)
Royal Brisbane and Women's Hospital	114	26	76.91	0.34 (0.22-0.50)	35.50 (24.23-54.34)
Sunshine Coast University Hospital	17	4	11.83	0.34 (0.09-0.87)	35.50 (13.86-130.29)
Toowoomba Hospital	47	13	30.83	0.42 (0.22-0.72)	28.46 (16.64-53.45)
Townsville University Hospital	61	20	43.37	0.46 (0.28-0.71)	26.02 (16.85-42.60)
<b>New South Wales</b>	<b>1419</b>	<b>328</b>	<b>1019.11</b>	<b>0.32 (0.29-0.36)</b>	<b>37.28 (33.46-41.67)</b>
Coffs Harbour Hospital	3	0	2.31	0.00 (0.00-1.60)	. (7.52-.)
Concord Repatriation General Hospital	59	13	45.17	0.29 (0.15-0.49)	41.70 (24.39-78.32)

*continued on next page*

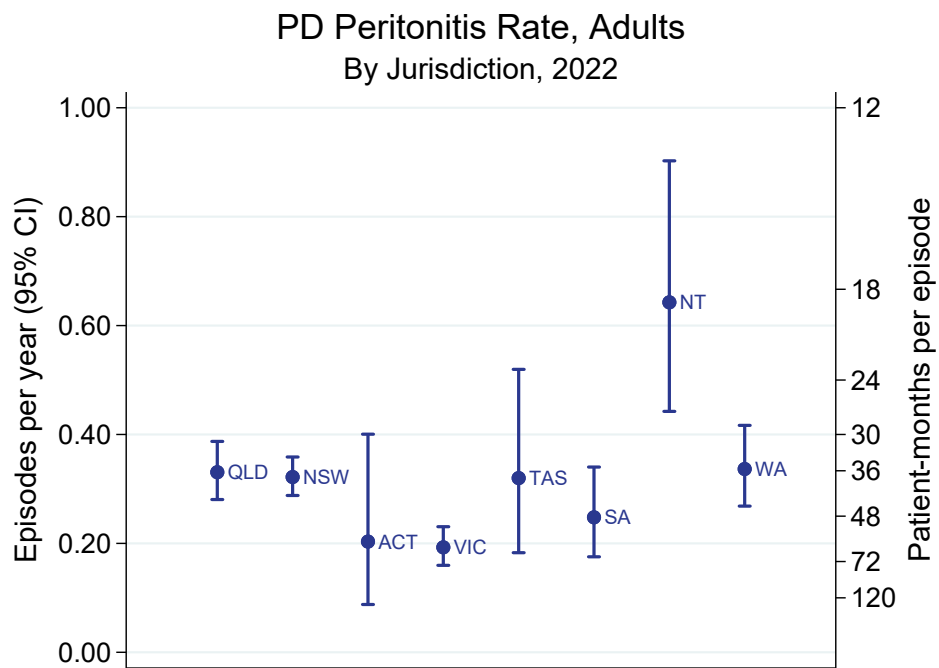
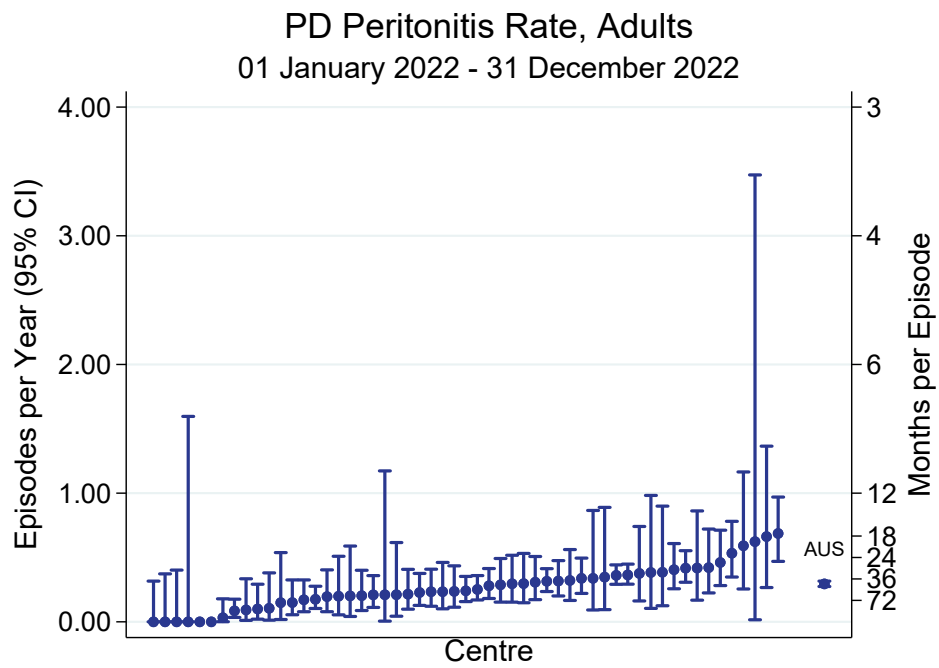
continued from previous page

Centre	PD Patients	*No of Episodes	Person Years	*Rate (95% CI)	*PM per Episode (95% CI)
Dubbo Base Hospital	11	0	9.17	0.00 (0.00-0.40)	. (29.84-.)
Gosford Hospital	31	8	21.27	0.38 (0.16-0.74)	31.91 (16.19-73.91)
John Hunter Hospital	82	23	56.75	0.41 (0.26-0.61)	29.61 (19.73-46.71)
Lismore Base Hospital	21	3	14.23	0.21 (0.04-0.62)	56.93 (19.48-276.04)
Manning Rural Referral Hospital	14	4	11.52	0.35 (0.09-0.89)	34.55 (13.49-126.79)
Nepean Hospital	70	26	48.78	0.53 (0.35-0.78)	22.51 (15.37-34.47)
Orange Health Service	20	2	13.43	0.15 (0.02-0.54)	80.57 (22.31-665.33)
Port Macquarie Base Hospital	17	7	10.57	0.66 (0.27-1.37)	18.11 (8.79-45.05)
Royal North Shore Hospital	74	12	51.26	0.23 (0.12-0.41)	51.26 (29.34-99.20)
Royal Prince Alfred Hospital	64	10	42.28	0.24 (0.11-0.44)	50.73 (27.59-105.79)
South West Sydney Renal Service	315	89	244.24	0.36 (0.29-0.45)	32.93 (26.76-41.01)
St George Hospital	64	9	41.89	0.21 (0.10-0.41)	55.85 (29.42-122.14)
St Vincent's Hospital Sydney	28	4	20.10	0.20 (0.05-0.51)	60.31 (23.56-221.36)
Tamworth Hospital	27	7	16.74	0.42 (0.17-0.86)	28.69 (13.93-71.36)
The Prince of Wales Hospital	38	3	30.00	0.10 (0.02-0.29)	119.99 (41.06-581.86)
The Tweed Hospital	15	4	10.43	0.38 (0.10-0.98)	31.28 (12.22-114.79)
Wagga Wagga Base Hospital	24	2	19.00	0.11 (0.01-0.38)	114.00 (31.56-941.37)
Westmead Hospital	371	93	257.49	0.36 (0.29-0.44)	33.23 (27.12-41.16)
Wollongong Hospital	71	9	52.48	0.17 (0.08-0.33)	69.97 (36.86-153.02)
<b>Australian Capital Territory</b>	<b>59</b>	<b>8</b>	<b>39.35</b>	<b>0.20 (0.09-0.40)</b>	<b>59.03 (29.96-136.73)</b>
Canberra Hospital	59	8	39.35	0.20 (0.09-0.40)	59.03 (29.96-136.73)
<b>Victoria</b>	<b>913</b>	<b>119</b>	<b>617.38</b>	<b>0.19 (0.16-0.23)</b>	<b>62.26 (52.03-75.15)</b>
Alfred Hospital	125	25	89.16	0.28 (0.18-0.41)	42.80 (28.99-66.13)
Austin Hospital	51	1	31.16	0.03 (0.00-0.18)	373.95 (67.12-14770.10)
Bendigo Hospital	55	6	40.09	0.15 (0.05-0.33)	80.19 (36.84-218.50)
Eastern Health Integrated Renal Services	52	12	40.53	0.30 (0.15-0.52)	40.53 (23.20-78.43)
Epworth Richmond Hospital	1	0	0.45	0.00 (0.00-8.17)	. (1.47-.)
Monash Medical Centre	178	26	107.93	0.24 (0.16-0.35)	49.81 (34.00-76.25)
Northern Health Service Melbourne	49	7	35.72	0.20 (0.08-0.40)	61.24 (29.72-152.31)
St Vincent's Hospital Melbourne	99	15	65.80	0.23 (0.13-0.38)	52.64 (31.92-94.06)
The Royal Melbourne Hospital	151	18	102.88	0.17 (0.10-0.28)	68.59 (43.40-115.73)
University Hospital Geelong Barwon Health	33	2	21.61	0.09 (0.01-0.33)	129.64 (35.89-1070.50)

continued on next page

continued from previous page

Centre	PD Patients	*No of Episodes	Person Years	*Rate (95% CI)	*PM per Episode (95% CI)
Western Health Service	119	7	82.05	0.09 (0.03-0.18)	140.65 (68.26-349.83)
<b>Tasmania</b>	<b>73</b>	<b>16</b>	<b>50.01</b>	<b>0.32 (0.18-0.52)</b>	<b>37.51 (23.10-65.62)</b>
Launceston General Hospital	50	11	37.03	0.30 (0.15-0.53)	40.40 (22.58-80.93)
Royal Hobart Hospital	23	5	12.98	0.39 (0.13-0.90)	31.15 (13.35-95.92)
<b>South Australia</b>	<b>223</b>	<b>38</b>	<b>153.32</b>	<b>0.25 (0.18-0.34)</b>	<b>48.42 (35.27-68.42)</b>
Central Northern Adelaide Renal Service	179	30	119.17	0.25 (0.17-0.36)	47.67 (33.39-70.65)
Flinders Medical Centre	44	8	34.15	0.23 (0.10-0.46)	51.23 (26.00-118.66)
<b>Northern Territory</b>	<b>81</b>	<b>33</b>	<b>51.35</b>	<b>0.64 (0.44-0.90)</b>	<b>18.67 (13.30-27.13)</b>
Alice Springs Hospital	7	1	4.75	0.21 (0.01-1.17)	57.00 (10.23-2251.46)
Royal Darwin Hospital	74	32	46.60	0.69 (0.47-0.97)	17.47 (12.38-25.55)
<b>Western Australia</b>	<b>366</b>	<b>84</b>	<b>249.58</b>	<b>0.34 (0.27-0.42)</b>	<b>35.65 (28.80-44.70)</b>
Fiona Stanley Hospital	101	13	61.92	0.21 (0.11-0.36)	57.15 (33.42-107.34)
Royal Perth Hospital	100	23	72.54	0.32 (0.20-0.48)	37.85 (25.22-59.71)
Sir Charles Gairdner Hospital	165	48	115.12	0.42 (0.31-0.55)	28.78 (21.71-39.03)



## 1.2 Paediatric

This table presents the total number of peritonitis episodes and patient exposure in years by Centre. Patient totals, exposure and peritonitis episodes were determined using the hospital at which the patient was receiving treatment at the time. So, if a patient transferred units during the observation period, the subsequent exposure and peritonitis episodes were allocated to the new unit. Months per episode (PM per Episode) is also reported. This should be interpreted as the average number of months between episodes of peritonitis; it can not be calculated if the peritonitis rate is zero. Patients are included in this paediatric report if they were treated at a paediatric hospital. In rare cases when patients younger than 18 years are treated at an adult centre, they are included in the adult report. Any patients 18 years and older treated at a paediatric hospital are included in this report. This quality indicator is presented for Australia only as New Zealand peritonitis episode data is reported through the New Zealand Peritoneal Dialysis Registry.

Centre	PD Patients	No of Episodes	Person Years	Rate (95% CI)	PM per Episode (95% CI)
<b>Australia</b>	<b>75</b>	<b>14</b>	<b>51.61</b>	<b>0.27 (0.15-0.46)</b>	<b>44.23 (26.36-80.91)</b>
<b>Queensland</b>	<b>30</b>	<b>4</b>	<b>20.48</b>	<b>0.20 (0.05-0.50)</b>	<b>61.45 (24.00-225.52)</b>
Child and Adolescent Renal Service	30	4	20.48	0.20 (0.05-0.50)	61.45 (24.00-225.52)
<b>New South Wales</b>	<b>16</b>	<b>5</b>	<b>10.54</b>	<b>0.47 (0.15-1.11)</b>	<b>25.29 (10.84-77.89)</b>
Sydney Children's Hospital	9	4	6.70	0.60 (0.16-1.53)	20.11 (7.85-73.80)
The Children's Hospital at Westmead	7	1	3.84	0.26 (0.01-1.45)	46.03 (8.26-1818.04)
<b>Victoria</b>	<b>23</b>	<b>5</b>	<b>15.72</b>	<b>0.32 (0.10-0.74)</b>	<b>37.72 (16.16-116.18)</b>
Monash Children's Centre	10	2	6.26	0.32 (0.04-1.15)	37.57 (10.40-310.22)
Royal Children's Hospital	13	3	9.46	0.32 (0.07-0.93)	37.83 (12.94-183.42)
<b>South Australia</b>	<b>4</b>	<b>0</b>	<b>4.00</b>	<b>0.00 (0.00-0.92)</b>	<b>. (13.00-.)</b>
Women's and Children's Hospital	4	0	4.00	0.00 (0.00-0.92)	. (13.00-.)
<b>Western Australia</b>	<b>2</b>	<b>0</b>	<b>0.87</b>	<b>0.00 (0.00-4.24)</b>	<b>. (2.83-.)</b>
Perth Children's Hospital	2	0	0.87	0.00 (0.00-4.24)	. (2.83-.)

## 2 Dialysis Access Planning at Commencement of Dialysis

### 2.1 All Dialysis Access Planning

#### 2.1.1 Adult

This table presents the numbers of patients beginning haemodialysis or peritoneal dialysis and the percentage starting with a permanent access (an AVF or AVG for haemodialysis and all peritoneal dialysis patients) during the observation window by Centre, where dialysis was the first kidney replacement therapy. Patients are excluded from this adult report if they were treated at a paediatric hospital. In rare cases when patients younger than 18 years are treated at an adult centre, they are included in this adult report. Any patients 18 years and older treated at a paediatric hospital are excluded from this report. Some Centres did not report type of first access for all new HD patients. The percent beginning with a permanent access is based on the number of patients with data available for first access. Finally, the total of Early Referrals (patients seen more than 3 months before first treatment) and the percentage of Early Referrals with a permanent access are also presented.

Centre	Dialysis Patients	AVF or AVG or PD	Vascular Catheter	Missing Access Data	% of AVF or AVG or PD (95 % CI)	Early Referral	% of Early Referrals with AVF or AVG or PD
<b>Australia</b>	<b>3274</b>	<b>1761</b>	<b>1509</b>	<b>4</b>	<b>54 (52-56)</b>	<b>2734</b>	<b>60 (58-62)</b>
<b>Queensland</b>	<b>634</b>	<b>330</b>	<b>302</b>	<b>2</b>	<b>52 (48-56)</b>	<b>532</b>	<b>58 (54-63)</b>
Bundaberg Hospital	15	9	6	0	60 (32-84)	13	69 (39-91)
Cairns Hospital	69	40	29	0	58 (45-70)	55	67 (53-79)
Chermside Dialysis Centre	12	6	6	0	50 (21-79)	11	55 (23-83)
Gold Coast Private Hospital	19	5	14	0	26 (9-51)	8	50 (16-84)
Gold Coast University Hospital	48	17	30	1	36 (23-51)	32	44 (26-62)
Henry Dalziel Dialysis Clinic - Greenslopes	22	8	14	0	36 (17-59)	22	36 (17-59)
Hervey Bay Hospital	17	10	7	0	59 (33-82)	13	77 (46-95)
Ipswich Hospital	20	9	11	0	45 (23-68)	16	50 (25-75)
John Flynn Private Hospital	11	5	6	0	45 (17-77)	11	45 (17-77)
Mackay Base Hospital	25	16	9	0	64 (43-82)	25	64 (43-82)
Mater Hospital, Brisbane	15	6	9	0	40 (16-68)	10	60 (26-88)
Mater Hospital, Townsville	6	5	1	0	83 (36-100)	6	83 (36-100)
Nambour Selangor Private Hospital	3	1	2	0	33 (1-91)	3	33 (1-91)
North Lakes Dialysis Centre	9	4	5	0	44 (14-79)	7	57 (18-90)
Pindara Renal Unit	6	6	0	0	100 (54-100)	6	100 (54-100)
Princess Alexandra Hospital	97	57	40	0	59 (48-69)	76	66 (54-76)

*continued on next page*



continued from previous page

Centre	Dialysis Patients	AVF or AVG or PD	Vascular Catheter	Missing Access Data	% of AVF or AVG or PD (95 % CI)	Early Referral	% of Early Referrals with AVF or AVG or PD
Rockhampton Hospital	14	8	6	0	57 (29-82)	14	57 (29-82)
Royal Brisbane and Women's Hospital	72	40	32	0	56 (43-67)	61	62 (49-74)
St Andrew's Ipswich Private Hospital	6	5	1	0	83 (36-100)	6	83 (36-100)
St Andrew's Toowoomba B.Braun's Dialysis Clinic	6	0	6	0	0 (0-46)	5	0 (0-52)
Sunshine Coast University Hospital	35	18	17	0	51 (34-69)	32	56 (38-74)
Sunshine Coast University Private Hospital	3	1	2	0	33 (1-91)	3	33 (1-91)
The Wesley Hospital Brisbane	14	6	8	0	43 (18-71)	13	46 (19-75)
Toowoomba Hospital	29	26	3	0	90 (73-98)	27	89 (71-98)
Townsville University Hospital	61	22	38	1	37 (25-50)	57	39 (26-52)
<b>New South Wales</b>	<b>972</b>	<b>556</b>	<b>414</b>	<b>2</b>	<b>57 (54-60)</b>	<b>837</b>	<b>63 (59-66)</b>
Bathurst Base Hospital	7	2	5	0	29 (4-71)	5	40 (5-85)
Coffs Harbour Hospital	15	7	8	0	47 (21-73)	10	70 (35-93)
Concord Repatriation General Hospital	32	20	12	0	62 (44-79)	30	67 (47-83)
Dubbo Base Hospital	10	6	4	0	60 (26-88)	8	75 (35-97)
Gosford Hospital	50	27	23	0	54 (39-68)	38	68 (51-82)
Gregory Hills B.Braun Renal Care Centre	7	3	4	0	43 (10-82)	7	43 (10-82)
John Hunter Hospital	69	41	28	0	59 (47-71)	60	68 (55-80)
Lismore Base Hospital	13	6	7	0	46 (19-75)	11	55 (23-83)
Liverpool Private Dialysis Centre	2	1	1	0	50 (1-99)	2	50 (1-99)
Manning Rural Referral Hospital	8	4	4	0	50 (16-84)	8	50 (16-84)
Mater Hospital, North Sydney	5	3	2	0	60 (15-95)	3	67 (9-99)
Mayo Private Hospital	1	1	0	0	100 (2-100)	0	–
Nepean Hospital	49	31	18	0	63 (48-77)	37	70 (53-84)
Newcastle Dialysis Centre	5	2	3	0	40 (5-85)	4	50 (7-93)
Orange Health Service	11	6	5	0	55 (23-83)	9	67 (30-93)
Port Macquarie Base Hospital	16	10	5	1	67 (38-88)	14	71 (42-92)
Port Macquarie Private Hospital	3	1	2	0	33 (1-91)	3	33 (1-91)
Royal North Shore Hospital	68	42	26	0	62 (49-73)	47	70 (55-83)
Royal Prince Alfred Hospital	53	24	28	1	46 (32-61)	47	49 (34-64)
South West Sydney Renal Service	163	84	79	0	52 (44-59)	163	52 (44-59)

continued on next page

continued from previous page

Centre	Dialysis Patients	AVF or AVG or PD	Vascular Catheter	Missing Access Data	% of AVF or AVG or PD (95 % CI)	Early Referral	% of Early Referrals with AVF or AVG or PD
St George Hospital	55	39	16	0	71 (57-82)	51	75 (60-86)
St Vincent's Hospital Sydney	32	9	23	0	28 (14-47)	15	60 (32-84)
St Vincent's Lismore Private Dialysis Centre	1	0	1	0	0 (0-98)	0	–
Sydney Adventist Hospital	6	2	4	0	33 (4-78)	6	33 (4-78)
Tamworth Hospital	18	14	4	0	78 (52-94)	18	78 (52-94)
The Prince of Wales Hospital	28	19	9	0	68 (48-84)	27	67 (46-83)
The Tweed Hospital	12	5	7	0	42 (15-72)	12	42 (15-72)
Wagga Wagga Base Hospital	25	12	13	0	48 (28-69)	20	55 (32-77)
Westmead Hospital	167	112	55	0	67 (59-74)	145	71 (63-78)
Wollongong Hospital	41	23	18	0	56 (40-72)	37	59 (42-75)
<b>Australian Capital Territory</b>	<b>80</b>	<b>40</b>	<b>40</b>	<b>0</b>	<b>50 (39-61)</b>	<b>68</b>	<b>57 (45-69)</b>
Access Nephrology	11	7	4	0	64 (31-89)	11	64 (31-89)
Canberra Hospital	69	33	36	0	48 (36-60)	57	56 (42-69)
<b>Victoria</b>	<b>771</b>	<b>435</b>	<b>336</b>	<b>0</b>	<b>56 (53-60)</b>	<b>635</b>	<b>63 (60-67)</b>
Alfred Hospital	67	40	27	0	60 (47-72)	42	64 (48-78)
Austin Hospital	76	21	55	0	28 (18-39)	61	33 (21-46)
Bendigo Hospital	26	14	12	0	54 (33-73)	25	56 (35-76)
Diamond Valley B.Braun Renal Care Centre	5	3	2	0	60 (15-95)	5	60 (15-95)
Eastern Health Integrated Renal Services	43	22	21	0	51 (35-67)	39	56 (40-72)
Epworth Eastern Hospital	5	4	1	0	80 (28-99)	5	80 (28-99)
Epworth Richmond Hospital	4	1	3	0	25 (1-81)	2	0 (0-84)
Forest Hill Dialysis Centre	7	7	0	0	100 (59-100)	5	100 (48-100)
Malvern Dialysis Centre	16	11	5	0	69 (41-89)	12	75 (43-95)
Monash Medical Centre	162	102	60	0	63 (55-70)	137	72 (64-80)
North Melbourne B.Braun Renal Care Centre	2	2	0	0	100 (16-100)	2	100 (16-100)
Northern Health Service Melbourne	55	24	31	0	44 (30-58)	46	52 (37-67)
St Vincent's Hospital Melbourne	71	41	30	0	58 (45-69)	52	69 (55-81)
Sunshine Private Dialysis Centre Fresenius	3	3	0	0	100 (29-100)	1	100 (2-100)
The Royal Melbourne Hospital	122	79	43	0	65 (56-73)	110	69 (60-78)

continued on next page

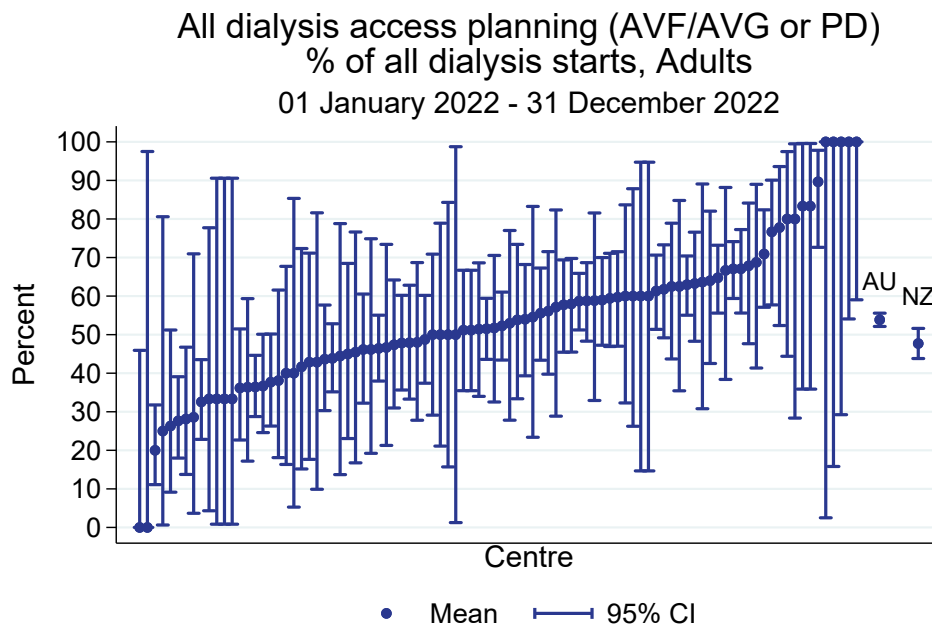
continued from previous page

Centre	Dialysis Patients	AVF or AVG or PD	Vascular Catheter	Missing Access Data	% of AVF or AVG or PD (95 % CI)	Early Referral	% of Early Referrals with AVF or AVG or PD
University Hospital Geelong Barwon Health	29	15	14	0	52 (33-71)	25	60 (39-79)
Western Health Service	78	46	32	0	59 (47-70)	66	70 (57-80)
<b>Tasmania</b>	<b>64</b>	<b>30</b>	<b>34</b>	<b>0</b>	<b>47 (34-60)</b>	<b>55</b>	<b>55 (41-68)</b>
Launceston General Hospital	43	22	21	0	51 (35-67)	37	59 (42-75)
Royal Hobart Hospital	21	8	13	0	38 (18-62)	18	44 (22-69)
<b>South Australia</b>	<b>232</b>	<b>131</b>	<b>101</b>	<b>0</b>	<b>56 (50-63)</b>	<b>200</b>	<b>64 (56-70)</b>
Central Northern Adelaide Renal Service	184	108	76	0	59 (51-66)	160	65 (57-72)
Flinders Medical Centre	48	23	25	0	48 (33-63)	40	58 (41-73)
<b>Northern Territory</b>	<b>145</b>	<b>52</b>	<b>93</b>	<b>0</b>	<b>36 (28-44)</b>	<b>108</b>	<b>43 (33-52)</b>
Alice Springs Hospital	65	13	52	0	20 (11-32)	51	25 (14-40)
Royal Darwin Hospital	80	39	41	0	49 (37-60)	57	58 (44-71)
<b>Western Australia</b>	<b>376</b>	<b>187</b>	<b>189</b>	<b>0</b>	<b>50 (45-55)</b>	<b>299</b>	<b>56 (50-62)</b>
Fiona Stanley Hospital	140	65	75	0	46 (38-55)	103	52 (42-62)
Royal Perth Hospital	130	57	73	0	44 (35-53)	112	47 (38-57)
Sir Charles Gairdner Hospital	106	65	41	0	61 (51-71)	84	73 (62-82)
<b>New Zealand</b>	<b>653</b>	<b>311</b>	<b>341</b>	<b>1</b>	<b>48 (44-52)</b>	<b>569</b>	<b>52 (48-56)</b>
Auckland City Hospital	69	26	43	0	38 (26-50)	66	39 (28-52)
Christchurch Hospital	38	18	20	0	47 (31-64)	33	55 (36-72)
Dunedin Hospital	30	23	7	0	77 (58-90)	28	75 (55-89)
Hawkes Bay Hospital	17	9	8	0	53 (28-77)	14	64 (35-87)
Middlemore Hospital	151	55	96	0	36 (29-45)	135	36 (28-45)
Palmerston North Hospital	16	10	6	0	62 (35-85)	14	71 (42-92)
Taranaki Hospital	10	8	2	0	80 (44-97)	10	80 (44-97)
Waikato Hospital	132	69	63	0	52 (43-61)	110	63 (53-72)
Waitemata Renal Service	87	28	58	1	33 (23-44)	71	35 (24-47)
Wellington Regional Hospital	79	53	26	0	67 (56-77)	67	76 (64-86)

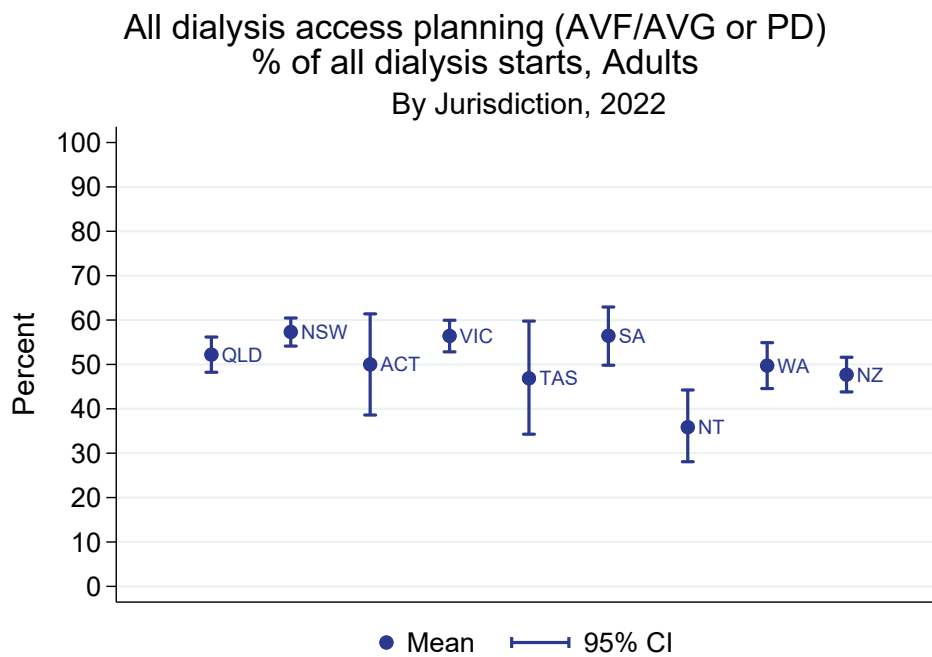
continued on next page

*continued from previous page*

<b>Centre</b>	Dialysis Patients	AVF or AVG or PD	Vascular Catheter	Missing Access Data	% of AVF or AVG or PD (95 % CI)	Early Referral	% of Early Referrals with AVF or AVG or PD
Whangarei Hospital	24	12	12	0	50 (29-71)	21	52 (30-74)



All adult dialysis starts including late referred patients



### 2.1.2 Paediatric

This table presents the numbers of patients beginning haemodialysis or peritoneal dialysis and the percentage starting with a permanent access (an AVF or AVG for haemodialysis and all peritoneal dialysis patients) during the observation window by Centre, where dialysis was the first kidney replacement therapy. Patients are included in this paediatric report if they were treated at a paediatric hospital. In rare cases when patients younger than 18 years are treated at an adult centre, they are included in the adult report. Any patients 18 years and older treated at a paediatric hospital are included in this report. Finally, the total of Early Referrals (patients seen more than 3 months before first treatment) and the percentage of Early Referrals with a permanent access are also presented.

Centre	Dialysis Patients	AVF or AVG or PD	Vascular Catheter	Missing Access Data	% of AVF or AVG or PD (95 % CI)	Early Referral	% of Early Referrals with AVF or AVG or PD
<b>Australia</b>	<b>37</b>	<b>29</b>	<b>8</b>	<b>0</b>	<b>78 (62-90)</b>	<b>21</b>	<b>81 (58-95)</b>
<b>Queensland</b>	<b>9</b>	<b>8</b>	<b>1</b>	<b>0</b>	<b>89 (52-100)</b>	<b>8</b>	<b>88 (47-100)</b>
Child and Adolescent Renal Service	9	8	1	0	89 (52-100)	8	88 (47-100)
<b>New South Wales</b>	<b>10</b>	<b>7</b>	<b>3</b>	<b>0</b>	<b>70 (35-93)</b>	<b>3</b>	<b>67 (9-99)</b>
Sydney Children's Hospital	5	5	0	0	100 (48-100)	0	–
The Children's Hospital at Westmead	5	2	3	0	40 (5-85)	3	67 (9-99)
<b>Victoria</b>	<b>15</b>	<b>12</b>	<b>3</b>	<b>0</b>	<b>80 (52-96)</b>	<b>8</b>	<b>75 (35-97)</b>
Monash Children's Centre	7	7	0	0	100 (59-100)	3	100 (29-100)
Royal Children's Hospital	8	5	3	0	62 (24-91)	5	60 (15-95)
<b>South Australia</b>	<b>1</b>	<b>1</b>	<b>0</b>	<b>0</b>	<b>100 (2-100)</b>	<b>1</b>	<b>100 (2-100)</b>
Women's and Children's Hospital	1	1	0	0	100 (2-100)	1	100 (2-100)
<b>Western Australia</b>	<b>2</b>	<b>1</b>	<b>1</b>	<b>0</b>	<b>50 (1-99)</b>	<b>1</b>	<b>100 (2-100)</b>
Perth Children's Hospital	2	1	1	0	50 (1-99)	1	100 (2-100)
<b>New Zealand</b>	<b>6</b>	<b>6</b>	<b>0</b>	<b>0</b>	<b>100 (54-100)</b>	<b>2</b>	<b>100 (16-100)</b>
Starship Children's Hospital	6	6	0	0	100 (54-100)	2	100 (16-100)

## 2.2 Vascular Access at First Haemodialysis

### 2.2.1 Adult

This table presents the numbers of patients beginning haemodialysis and the percentage starting with an AVF or AVG during the observation window by Centre, where HD was the first kidney replacement therapy. Patients are excluded from this adult report if they were treated at a paediatric hospital. In rare cases when patients younger than 18 years are treated at an adult centre, they are included in this adult report. Any patients 18 years and older treated at a paediatric hospital are excluded from this report. Some Centres did not report type of first access for all new HD patients. The percent beginning with AVF or AVG is based on the number of patients with data available for first access. Finally, the total of Early Referrals (patients seen more than 3 months before first treatment) and the percentage of Early Referrals with AVF or AVG are also presented.

Centre	HD Patients	AVF or AVG	Vascular Catheter	Missing Access Data	% of AVF or AVG (95 % CI)	Early Referral	% of Early Referrals with AVF or AVG
<b>Australia</b>	<b>2472</b>	<b>959</b>	<b>1509</b>	<b>4</b>	<b>39 (37-41)</b>	<b>1998</b>	<b>46 (43-48)</b>
<b>Queensland</b>	<b>510</b>	<b>206</b>	<b>302</b>	<b>2</b>	<b>41 (36-45)</b>	<b>418</b>	<b>47 (42-52)</b>
Bundaberg Hospital	14	8	6	0	57 (29-82)	12	67 (35-90)
Cairns Hospital	58	29	29	0	50 (37-63)	45	60 (44-74)
Chermside Dialysis Centre	12	6	6	0	50 (21-79)	11	55 (23-83)
Gold Coast Private Hospital	19	5	14	0	26 (9-51)	8	50 (16-84)
Gold Coast University Hospital	41	10	30	1	25 (13-41)	26	31 (14-52)
Henry Dalziel Dialysis Clinic - Greenslopes	22	8	14	0	36 (17-59)	22	36 (17-59)
Hervey Bay Hospital	14	7	7	0	50 (23-77)	10	70 (35-93)
Ipswich Hospital	18	7	11	0	39 (17-64)	14	43 (18-71)
John Flynn Private Hospital	11	5	6	0	45 (17-77)	11	45 (17-77)
Mackay Base Hospital	24	15	9	0	62 (41-81)	24	62 (41-81)
Mater Hospital, Brisbane	15	6	9	0	40 (16-68)	10	60 (26-88)
Mater Hospital, Townsville	6	5	1	0	83 (36-100)	6	83 (36-100)
Nambour Selangor Private Hospital	3	1	2	0	33 (1-91)	3	33 (1-91)
North Lakes Dialysis Centre	9	4	5	0	44 (14-79)	7	57 (18-90)
Pindara Renal Unit	6	6	0	0	100 (54-100)	6	100 (54-100)
Princess Alexandra Hospital	61	21	40	0	34 (23-48)	46	43 (29-59)
Rockhampton Hospital	10	4	6	0	40 (12-74)	10	40 (12-74)
Royal Brisbane and Women's Hospital	47	15	32	0	32 (19-47)	36	36 (21-54)
St Andrew's Ipswich Private Hospital	6	5	1	0	83 (36-100)	6	83 (36-100)
St Andrew's Toowoomba B.Braun's Dialysis Clinic	6	0	6	0	0 (0-46)	5	0 (0-52)

*continued on next page*

continued from previous page

Centre	HD Patients	AVF or AVG	Vascular Catheter	Missing Access Data	% of AVF or AVG (95 % CI)	Early Referral	% of Early Referrals with AVF or AVG
Sunshine Coast University Hospital	30	13	17	0	43 (25-63)	27	48 (29-68)
Sunshine Coast University Private Hospital	3	1	2	0	33 (1-91)	3	33 (1-91)
The Wesley Hospital Brisbane	14	6	8	0	43 (18-71)	13	46 (19-75)
Toowoomba Hospital	12	9	3	0	75 (43-95)	12	75 (43-95)
Townsville University Hospital	49	10	38	1	21 (10-35)	45	22 (11-37)
<b>New South Wales</b>	<b>687</b>	<b>271</b>	<b>414</b>	<b>2</b>	<b>40 (36-43)</b>	<b>569</b>	<b>45 (41-49)</b>
Bathurst Base Hospital	7	2	5	0	29 (4-71)	5	40 (5-85)
Coffs Harbour Hospital	15	7	8	0	47 (21-73)	10	70 (35-93)
Concord Repatriation General Hospital	24	12	12	0	50 (29-71)	22	55 (32-76)
Dubbo Base Hospital	9	5	4	0	56 (21-86)	7	71 (29-96)
Gosford Hospital	46	23	23	0	50 (35-65)	34	65 (46-80)
Gregory Hills B.Braun Renal Care Centre	7	3	4	0	43 (10-82)	7	43 (10-82)
John Hunter Hospital	50	22	28	0	44 (30-59)	41	54 (37-69)
Lismore Base Hospital	9	2	7	0	22 (3-60)	7	29 (4-71)
Liverpool Private Dialysis Centre	2	1	1	0	50 (1-99)	2	50 (1-99)
Manning Rural Referral Hospital	8	4	4	0	50 (16-84)	8	50 (16-84)
Mater Hospital, North Sydney	5	3	2	0	60 (15-95)	3	67 (9-99)
Mayo Private Hospital	1	1	0	0	100 (2-100)	0	–
Nepean Hospital	29	11	18	0	38 (21-58)	19	42 (20-67)
Newcastle Dialysis Centre	5	2	3	0	40 (5-85)	4	50 (7-93)
Orange Health Service	8	3	5	0	38 (9-76)	6	50 (12-88)
Port Macquarie Base Hospital	14	8	5	1	62 (32-86)	12	67 (35-90)
Port Macquarie Private Hospital	3	1	2	0	33 (1-91)	3	33 (1-91)
Royal North Shore Hospital	49	23	26	0	47 (33-62)	36	61 (43-77)
Royal Prince Alfred Hospital	40	11	28	1	28 (15-45)	35	31 (17-49)
South West Sydney Renal Service	104	25	79	0	24 (16-33)	104	24 (16-33)
St George Hospital	37	21	16	0	57 (39-73)	34	62 (44-78)
St Vincent's Hospital Sydney	27	4	23	0	15 (4-34)	10	40 (12-74)
St Vincent's Lismore Private Dialysis Centre	1	0	1	0	0 (0-98)	0	–
Sydney Adventist Hospital	6	2	4	0	33 (4-78)	6	33 (4-78)
Tamworth Hospital	12	8	4	0	67 (35-90)	12	67 (35-90)

continued on next page



continued from previous page

Centre	HD Patients	AVF or AVG	Vascular Catheter	Missing Access Data	% of AVF or AVG (95 % CI)	Early Referral	% of Early Referrals with AVF or AVG
The Prince of Wales Hospital	22	13	9	0	59 (36-79)	21	57 (34-78)
The Tweed Hospital	10	3	7	0	30 (7-65)	10	30 (7-65)
Wagga Wagga Base Hospital	20	7	13	0	35 (15-59)	15	40 (16-68)
Westmead Hospital	92	37	55	0	40 (30-51)	75	44 (33-56)
Wollongong Hospital	25	7	18	0	28 (12-49)	21	29 (11-52)
<b>Australian Capital Territory</b>	<b>71</b>	<b>31</b>	<b>40</b>	<b>0</b>	<b>44 (32-56)</b>	<b>60</b>	<b>52 (38-65)</b>
Access Nephrology	11	7	4	0	64 (31-89)	11	64 (31-89)
Canberra Hospital	60	24	36	0	40 (28-53)	49	49 (34-64)
<b>Victoria</b>	<b>556</b>	<b>220</b>	<b>336</b>	<b>0</b>	<b>40 (35-44)</b>	<b>440</b>	<b>47 (43-52)</b>
Alfred Hospital	38	11	27	0	29 (15-46)	26	42 (23-63)
Austin Hospital	71	16	55	0	23 (13-34)	56	27 (16-40)
Bendigo Hospital	16	4	12	0	25 (7-52)	15	27 (8-55)
Diamond Valley B.Braun Renal Care Centre	5	3	2	0	60 (15-95)	5	60 (15-95)
Eastern Health Integrated Renal Services	32	11	21	0	34 (19-53)	28	39 (22-59)
Epworth Eastern Hospital	5	4	1	0	80 (28-99)	5	80 (28-99)
Epworth Richmond Hospital	4	1	3	0	25 (1-81)	2	0 (0-84)
Forest Hill Dialysis Centre	7	7	0	0	100 (59-100)	5	100 (48-100)
Malvern Dialysis Centre	16	11	5	0	69 (41-89)	12	75 (43-95)
Monash Medical Centre	108	48	60	0	44 (35-54)	85	55 (44-66)
North Melbourne B.Braun Renal Care Centre	2	2	0	0	100 (16-100)	2	100 (16-100)
Northern Health Service Melbourne	46	15	31	0	33 (20-48)	37	41 (25-58)
St Vincent's Hospital Melbourne	48	18	30	0	38 (24-53)	33	52 (34-69)
Sunshine Private Dialysis Centre Fresenius	3	3	0	0	100 (29-100)	1	100 (2-100)
The Royal Melbourne Hospital	79	36	43	0	46 (34-57)	68	50 (38-62)
University Hospital Geelong Barwon Health	26	12	14	0	46 (27-67)	22	55 (32-76)
Western Health Service	50	18	32	0	36 (23-51)	38	47 (31-64)
<b>Tasmania</b>	<b>46</b>	<b>12</b>	<b>34</b>	<b>0</b>	<b>26 (14-41)</b>	<b>37</b>	<b>32 (18-50)</b>
Launceston General Hospital	28	7	21	0	25 (11-45)	22	32 (14-55)
Royal Hobart Hospital	18	5	13	0	28 (10-53)	15	33 (12-62)

continued on next page

continued from previous page

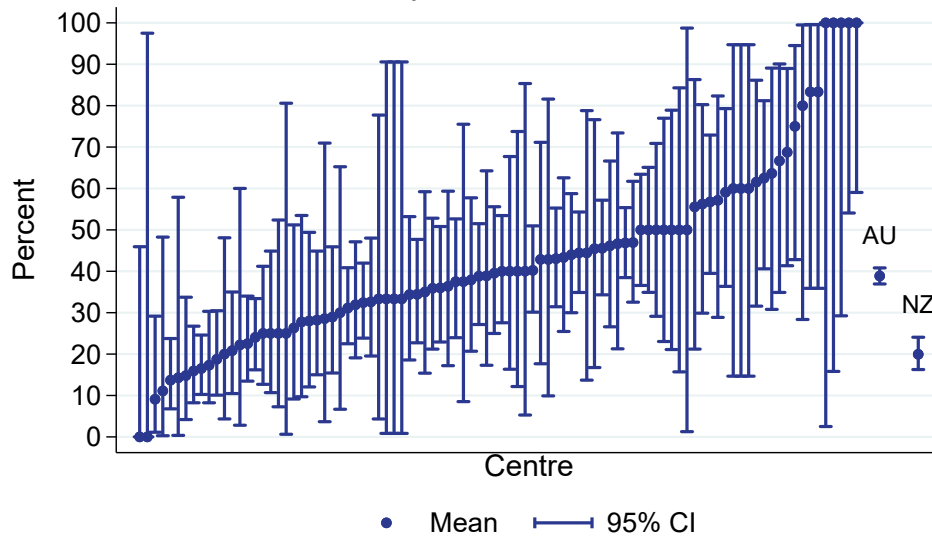
Centre	HD Patients	AVF or AVG	Vascular Catheter	Missing Access Data	% of AVF or AVG (95 % CI)	Early Referral	% of Early Referrals with AVF or AVG
<b>South Australia</b>	<b>182</b>	<b>81</b>	<b>101</b>	<b>0</b>	<b>45 (37-52)</b>	<b>153</b>	<b>52 (44-60)</b>
Central Northern Adelaide Renal Service	143	67	76	0	47 (38-55)	122	54 (45-63)
Flinders Medical Centre	39	14	25	0	36 (21-53)	31	45 (27-64)
<b>Northern Territory</b>	<b>131</b>	<b>38</b>	<b>93</b>	<b>0</b>	<b>29 (21-38)</b>	<b>99</b>	<b>37 (28-48)</b>
Alice Springs Hospital	64	12	52	0	19 (10-30)	50	24 (13-38)
Royal Darwin Hospital	67	26	41	0	39 (27-51)	49	51 (36-66)
<b>Western Australia</b>	<b>289</b>	<b>100</b>	<b>189</b>	<b>0</b>	<b>35 (29-40)</b>	<b>222</b>	<b>41 (34-48)</b>
Fiona Stanley Hospital	111	36	75	0	32 (24-42)	78	37 (26-49)
Royal Perth Hospital	106	33	73	0	31 (22-41)	91	35 (25-46)
Sir Charles Gairdner Hospital	72	31	41	0	43 (31-55)	53	57 (42-70)
<b>New Zealand</b>	<b>427</b>	<b>85</b>	<b>341</b>	<b>1</b>	<b>20 (16-24)</b>	<b>353</b>	<b>23 (19-28)</b>
Auckland City Hospital	52	9	43	0	17 (8-30)	49	18 (9-32)
Christchurch Hospital	22	2	20	0	9 (1-29)	17	12 (1-36)
Dunedin Hospital	16	9	7	0	56 (30-80)	15	53 (27-79)
Hawkes Bay Hospital	9	1	8	0	11 (0-48)	6	17 (0-64)
Middlemore Hospital	115	19	96	0	17 (10-25)	104	17 (11-26)
Palmerston North Hospital	7	1	6	0	14 (0-58)	5	20 (0-72)
Taranaki Hospital	5	3	2	0	60 (15-95)	5	60 (15-95)
Waikato Hospital	73	10	63	0	14 (7-24)	51	20 (10-33)
Waitemata Renal Service	70	11	58	1	16 (8-27)	55	16 (8-29)
Wellington Regional Hospital	43	17	26	0	40 (25-56)	33	52 (34-69)
Whangarei Hospital	15	3	12	0	20 (4-48)	13	23 (5-54)

The following hospitals did not report any haemodialysis patients between 01 January 2022 and 31 December 2022:

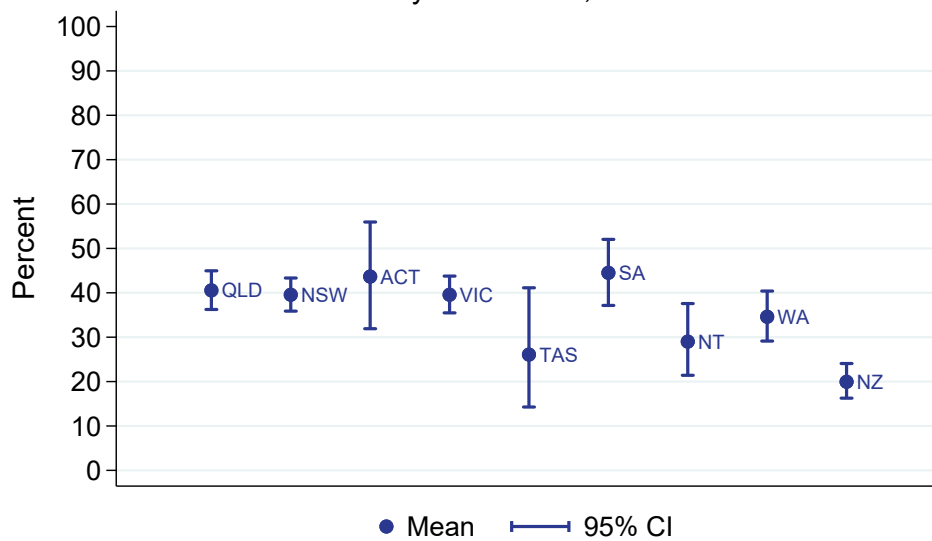
State	Hospital
QLD	Cairns Private Hospital Morayfield B.Braun Renal Care Centre

# Vascular access at first HD (AVF/AVG) % of all HD starts, Adults

01 January 2022 - 31 December 2022



## Vascular access at first HD (AVF/AVG) % of all HD starts, Adults By Jurisdiction, 2022



### 2.2.2 Paediatric

This table presents the numbers of patients beginning haemodialysis and the percentage starting with an AVF or AVG during the observation window by Centre, where HD was the first kidney replacement therapy. Patients are included in this paediatric report if they were treated at a paediatric hospital. In rare cases when patients younger than 18 years are treated at an adult centre, they are included in the adult report. Any patients 18 years and older treated at a paediatric hospital are included in this report. Some Centres did not report type of first access for all new HD patients. The percent beginning with AVF or AVG is based on the number of patients with data available for first access. Finally, the total of Early Referrals (patients seen more than 3 months before first treatment) and the percentage of Early Referrals with AVF or AVG are also presented.

Centre	HD Patients	AVF or AVG	Vascular Catheter	Missing Access Data	% of AVF or AVG (95 % CI)	Early Referral	% of Early Referrals with AVF or AVG
<b>Australia</b>	<b>9</b>	<b>1</b>	<b>8</b>	<b>0</b>	<b>11 (0-48)</b>	<b>5</b>	<b>20 (0-72)</b>
<b>Queensland</b> Child and Adolescent Renal Service	<b>1</b> 1	<b>0</b> 0	<b>1</b> 1	<b>0</b> 0	<b>0 (0-98)</b> 0 (0-98)	<b>1</b> 1	<b>0 (0-98)</b> 0 (0-98)
<b>New South Wales</b> The Children's Hospital at Westmead	<b>3</b> 3	<b>0</b> 0	<b>3</b> 3	<b>2</b> 0	<b>0 (0-98)</b> 0 (0-71)	<b>1</b> 1	<b>0 (0-98)</b> 0 (0-98)
<b>Victoria</b> Royal Children's Hospital	<b>3</b> 3	<b>0</b> 0	<b>3</b> 3	<b>2</b> 0	<b>0 (0-98)</b> 0 (0-71)	<b>2</b> 2	<b>0 (0-84)</b> 0 (0-84)
<b>South Australia</b> Women's and Children's Hospital	<b>1</b> 1	<b>1</b> 1	<b>0</b> 0	<b>0</b> 0	<b>100 (2-100)</b> 100 (2-100)	<b>1</b> 1	<b>100 (2-100)</b> 100 (2-100)
<b>Western Australia</b> Perth Children's Hospital	<b>1</b> 1	<b>0</b> 0	<b>1</b> 1	<b>0</b> 0	<b>0 (0-98)</b> 0 (0-98)	<b>0</b> 0	— —

## 2.3 HD Vascular Access Planning

### 2.3.1 Adult

This table presents the numbers of patients on haemodialysis at day 90 and the percentage starting haemodialysis with a permanent vascular access (an AVF or AVG) during the observation window by Centre. Modality changes of less than 30 days are ignored for the determination of modality at day 90. Patients are excluded from this adult report if they were treated at a paediatric hospital. In rare cases when patients younger than 18 years are treated at an adult centre, they are included in this adult report. Any patients 18 years and older treated at a paediatric hospital are excluded from this report. Some Centres did not report type of first access for all new HD patients. The percent beginning with a permanent access is based on the number of patients with data available for first access. Finally, the total of Early Referrals (patients seen more than 3 months before first treatment) and the percentage of Early Referrals with a permanent access are also presented.

Centre	HD Patients	AVF or AVG	Vascular Catheter	Missing Access Data	% of AVF or AVG (95 % CI)	Early Referral	% of Early Referrals with AVF or AVG
<b>Australia</b>	<b>2267</b>	<b>953</b>	<b>1305</b>	<b>9</b>	<b>42 (40-44)</b>	<b>1820</b>	<b>50 (47-52)</b>
<b>Queensland</b>	<b>475</b>	<b>199</b>	<b>274</b>	<b>2</b>	<b>42 (38-47)</b>	<b>401</b>	<b>48 (43-53)</b>
Bundaberg Hospital	14	8	6	0	57 (29-82)	12	67 (35-90)
Cairns Hospital	47	24	23	0	51 (36-66)	37	62 (45-78)
Cairns Private Hospital	1	0	1	0	0 (0-98)	1	0 (0-98)
Chermside Dialysis Centre	12	7	5	0	58 (28-85)	12	58 (28-85)
Gold Coast Private Hospital	15	5	10	0	33 (12-62)	8	50 (16-84)
Gold Coast University Hospital	37	11	26	0	30 (16-47)	29	31 (15-51)
Henry Dalziel Dialysis Clinic - Greenslopes	24	12	12	0	50 (29-71)	24	50 (29-71)
Hervey Bay Hospital	13	9	4	0	69 (39-91)	11	82 (48-98)
Ipswich Hospital	17	6	11	0	35 (14-62)	14	36 (13-65)
John Flynn Private Hospital	11	5	6	0	45 (17-77)	11	45 (17-77)
Mackay Base Hospital	20	14	6	0	70 (46-88)	20	70 (46-88)
Mater Hospital, Brisbane	12	5	7	0	42 (15-72)	8	62 (24-91)
Mater Hospital, Townsville	3	3	0	0	100 (29-100)	3	100 (29-100)
Nambour Selangor Private Hospital	2	1	1	0	50 (1-99)	2	50 (1-99)
North Lakes Dialysis Centre	9	4	5	0	44 (14-79)	8	50 (16-84)
Pindara Renal Unit	5	4	1	0	80 (28-99)	5	80 (28-99)
Princess Alexandra Hospital	64	20	44	0	31 (20-44)	47	40 (26-56)
Rockhampton Hospital	14	5	9	0	36 (13-65)	13	38 (14-68)
Royal Brisbane and Women's Hospital	39	15	23	1	39 (24-57)	33	45 (28-64)

*continued on next page*

continued from previous page

Centre	HD Patients	AVF or AVG	Vascular Catheter	Missing Access Data	% of AVF or AVG (95 % CI)	Early Referral	% of Early Referrals with AVF or AVG
St Andrew's Ipswich Private Hospital	7	5	2	0	71 (29-96)	7	71 (29-96)
St Andrew's Toowoomba B.Braun's Dialysis Clinic	5	1	4	0	20 (0-72)	5	20 (0-72)
Sunshine Coast University Hospital	27	11	16	0	41 (22-61)	22	50 (28-72)
Sunshine Coast University Private Hospital	5	4	1	0	80 (28-99)	5	80 (28-99)
The Wesley Hospital Brisbane	11	2	9	0	18 (2-52)	7	29 (4-71)
Toowoomba Hospital	10	7	3	0	70 (35-93)	10	70 (35-93)
Townsville University Hospital	51	11	39	1	22 (12-36)	47	23 (12-38)
<b>New South Wales</b>	<b>608</b>	<b>273</b>	<b>332</b>	<b>3</b>	<b>45 (41-49)</b>	<b>498</b>	<b>52 (48-56)</b>
Bathurst Base Hospital	8	2	6	0	25 (3-65)	6	33 (4-78)
Coffs Harbour Hospital	13	5	8	0	38 (14-68)	7	71 (29-96)
Concord Repatriation General Hospital	22	14	8	0	64 (41-83)	20	70 (46-88)
Dubbo Base Hospital	7	4	3	0	57 (18-90)	6	67 (22-96)
Gosford Hospital	42	21	20	1	51 (35-67)	30	67 (47-83)
Gregory Hills B.Braun Renal Care Centre	8	4	4	0	50 (16-84)	8	50 (16-84)
John Hunter Hospital	46	23	23	0	50 (35-65)	36	61 (43-77)
Lismore Base Hospital	13	6	7	0	46 (19-75)	12	50 (21-79)
Liverpool Private Dialysis Centre	3	2	1	0	67 (9-99)	3	67 (9-99)
Manning Rural Referral Hospital	8	4	4	0	50 (16-84)	8	50 (16-84)
Mater Hospital, North Sydney	4	2	2	0	50 (7-93)	3	67 (9-99)
Mayo Private Hospital	2	2	0	0	100 (16-100)	0	–
Nepean Hospital	26	13	13	0	50 (30-70)	23	52 (31-73)
Newcastle Dialysis Centre	4	2	2	0	50 (7-93)	3	67 (9-99)
Orange Health Service	5	2	3	0	40 (5-85)	3	67 (9-99)
Port Macquarie Base Hospital	14	6	7	1	46 (19-75)	10	50 (19-81)
Port Macquarie Private Hospital	2	1	1	0	50 (1-99)	2	50 (1-99)
Royal North Shore Hospital	51	24	27	0	47 (33-62)	34	65 (46-80)
Royal Prince Alfred Hospital	34	10	23	1	30 (16-49)	27	37 (19-58)
South West Sydney Renal Service	76	22	54	0	29 (19-40)	76	29 (19-40)
St George Hospital	28	16	12	0	57 (37-76)	26	62 (41-80)
St Vincent's Hospital Sydney	26	5	21	0	19 (7-39)	11	45 (17-77)
St Vincent's Lismore Private Dialysis Centre	2	1	1	0	50 (1-99)	1	100 (2-100)

continued on next page

continued from previous page

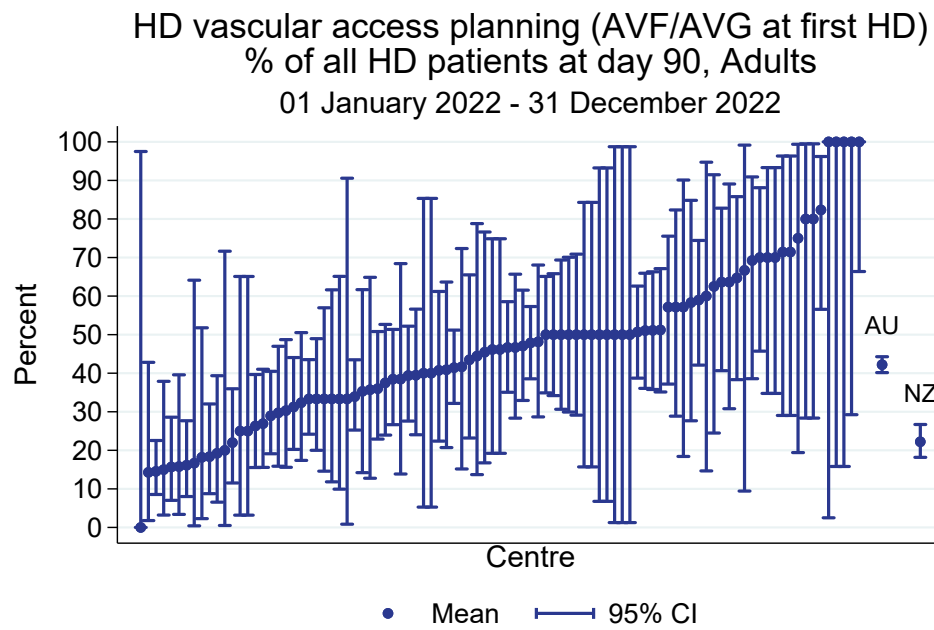
Centre	HD Patients	AVF or AVG	Vascular Catheter	Missing Access Data	% of AVF or AVG (95 % CI)	Early Referral	% of Early Referrals with AVF or AVG
Sydney Adventist Hospital	5	2	3	0	40 (5-85)	4	50 (7-93)
Tamworth Hospital	10	7	3	0	70 (35-93)	10	70 (35-93)
The Prince of Wales Hospital	17	11	6	0	65 (38-86)	16	62 (35-85)
The Tweed Hospital	6	1	5	0	17 (0-64)	6	17 (0-64)
Wagga Wagga Base Hospital	23	10	13	0	43 (23-66)	18	50 (26-74)
Westmead Hospital	73	37	36	0	51 (39-63)	63	54 (41-67)
Wollongong Hospital	30	14	16	0	47 (28-66)	26	50 (30-70)
<b>Australian Capital Territory</b>	<b>58</b>	<b>23</b>	<b>35</b>	<b>0</b>	<b>40 (27-53)</b>	<b>48</b>	<b>48 (33-63)</b>
Access Nephrology	8	5	3	0	62 (24-91)	8	62 (24-91)
Canberra Hospital	50	18	32	0	36 (23-51)	40	45 (29-62)
<b>Victoria</b>	<b>524</b>	<b>228</b>	<b>293</b>	<b>3</b>	<b>44 (39-48)</b>	<b>409</b>	<b>52 (47-57)</b>
Alfred Hospital	35	11	23	1	32 (17-51)	23	48 (27-69)
Austin Hospital	52	14	38	0	27 (16-41)	39	36 (21-53)
Bendigo Hospital	12	4	8	0	33 (10-65)	12	33 (10-65)
Diamond Valley B.Braun Renal Care Centre	5	3	2	0	60 (15-95)	4	50 (7-93)
Eastern Health Integrated Renal Services	27	13	14	0	48 (29-68)	26	50 (30-70)
Epworth Eastern Hospital	7	5	2	0	71 (29-96)	7	71 (29-96)
Epworth Richmond Hospital	3	1	2	0	33 (1-91)	2	0 (0-84)
Forest Hill Dialysis Centre	9	9	0	0	100 (66-100)	7	100 (59-100)
Malvern Dialysis Centre	17	14	3	0	82 (57-96)	12	100 (74-100)
Monash Medical Centre	113	46	65	2	41 (32-51)	91	49 (39-60)
North Melbourne B.Braun Renal Care Centre	2	2	0	0	100 (16-100)	2	100 (16-100)
Northern Health Service Melbourne	45	15	30	0	33 (20-49)	28	39 (22-59)
St Vincent's Hospital Melbourne	48	18	30	0	38 (24-53)	32	50 (32-68)
Sunshine Private Dialysis Centre Fresenius	1	1	0	0	100 (2-100)	0	–
The Royal Melbourne Hospital	75	35	40	0	47 (35-59)	68	49 (36-61)
University Hospital Geelong Barwon Health	28	14	14	0	50 (31-69)	22	59 (36-79)
Western Health Service	45	23	22	0	51 (36-66)	34	68 (49-83)
<b>Tasmania</b>	<b>43</b>	<b>16</b>	<b>27</b>	<b>0</b>	<b>37 (23-53)</b>	<b>35</b>	<b>46 (29-63)</b>

continued on next page

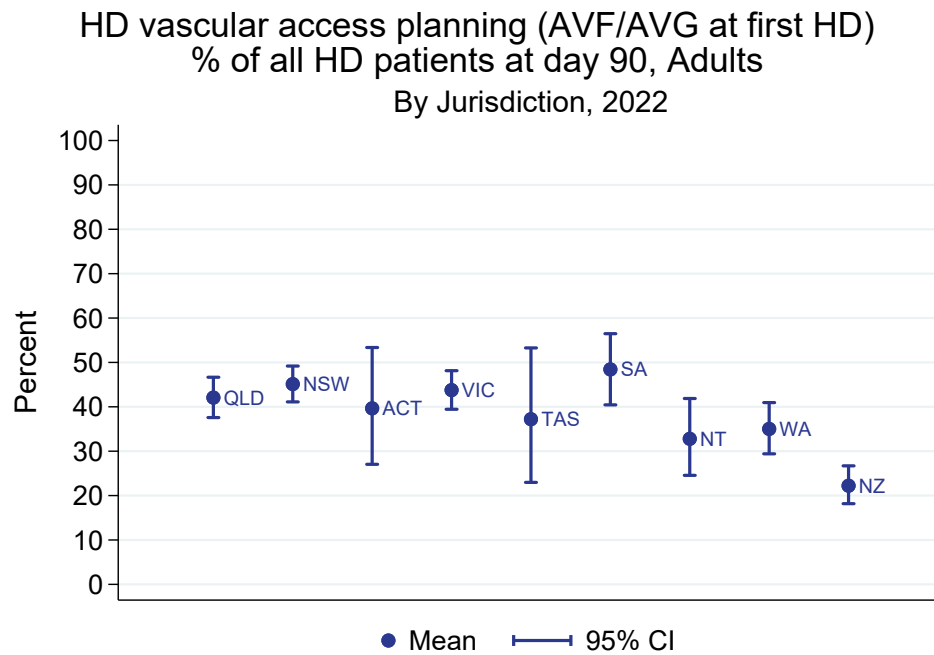


continued from previous page

Centre	HD Patients	AVF or AVG	Vascular Catheter	Missing Access Data	% of AVF or AVG (95 % CI)	Early Referral	% of Early Referrals with AVF or AVG
Launceston General Hospital	21	7	14	0	33 (15-57)	18	39 (17-64)
Royal Hobart Hospital	22	9	13	0	41 (21-64)	17	53 (28-77)
<b>South Australia</b>	<b>159</b>	<b>77</b>	<b>82</b>	<b>0</b>	<b>48 (40-56)</b>	<b>131</b>	<b>58 (49-67)</b>
Central Northern Adelaide Renal Service	117	56	61	0	48 (39-57)	99	56 (45-66)
Flinders Medical Centre	42	21	21	0	50 (34-66)	32	66 (47-81)
<b>Northern Territory</b>	<b>122</b>	<b>40</b>	<b>82</b>	<b>0</b>	<b>33 (25-42)</b>	<b>96</b>	<b>42 (32-52)</b>
Alice Springs Hospital	57	15	42	0	26 (16-40)	48	31 (19-46)
Royal Darwin Hospital	65	25	40	0	38 (27-51)	48	52 (37-67)
<b>Western Australia</b>	<b>278</b>	<b>97</b>	<b>180</b>	<b>1</b>	<b>35 (29-41)</b>	<b>202</b>	<b>43 (36-50)</b>
Fiona Stanley Hospital	113	38	74	1	34 (25-43)	75	43 (31-55)
Royal Perth Hospital	99	33	66	0	33 (24-44)	82	38 (27-49)
Sir Charles Gairdner Hospital	66	26	40	0	39 (28-52)	45	53 (38-68)
<b>New Zealand</b>	<b>390</b>	<b>86</b>	<b>301</b>	<b>3</b>	<b>22 (18-27)</b>	<b>330</b>	<b>25 (20-30)</b>
Auckland City Hospital	51	8	43	0	16 (7-29)	48	17 (7-30)
Christchurch Hospital	19	3	16	0	16 (3-40)	15	20 (4-48)
Dunedin Hospital	11	7	4	0	64 (31-89)	11	64 (31-89)
Hawkes Bay Hospital	8	2	6	0	25 (3-65)	7	29 (4-71)
Middlemore Hospital	110	16	94	0	15 (9-23)	101	15 (9-23)
Palmerston North Hospital	16	2	12	2	14 (2-43)	12	17 (2-48)
Taranaki Hospital	4	3	1	0	75 (19-99)	3	100 (29-100)
Waikato Hospital	63	10	52	1	16 (8-28)	45	22 (11-37)
Waitemata Renal Service	49	9	40	0	18 (9-32)	37	16 (6-32)
Wellington Regional Hospital	39	23	16	0	59 (42-74)	35	66 (48-81)
Whangarei Hospital	20	3	17	0	15 (3-38)	16	19 (4-46)



All HD patients at day 90 including those late referred



### 2.3.2 Paediatric

This table presents the numbers of patients on haemodialysis at day 90 and the percentage starting haemodialysis with a permanent vascular access (an AVF or AVG) during the observation window by Centre. Modality changes of less than 30 days are ignored for the determination of modality at day 90. Patients are included in this paediatric report if they were treated at a paediatric hospital. In rare cases when patients younger than 18 years are treated at an adult centre, they are included in the adult report. Any patients 18 years and older treated at a paediatric hospital are included in this report. Finally, the total of Early Referrals (patients seen more than 3 months before first treatment) and the percentage of Early Referrals with a permanent access are also presented.

Centre	HD Patients	AVF or AVG	Vascular Catheter	Missing Access Data	% of AVF or AVG (95 % CI)	Early Referral	% of Early Referrals with AVF or AVG
<b>Australia</b>	<b>5</b>	<b>1</b>	<b>4</b>	<b>0</b>	<b>20 (0-72)</b>	<b>4</b>	<b>25 (1-81)</b>
<b>New South Wales</b>	<b>1</b>	<b>0</b>	<b>1</b>	<b>0</b>	<b>0 (0-98)</b>	<b>0</b>	<b>–</b>
The Children's Hospital at Westmead	1	0	1	0	0 (0-98)	0	–
<b>Victoria</b>	<b>2</b>	<b>0</b>	<b>2</b>	<b>0</b>	<b>0 (0-84)</b>	<b>2</b>	<b>0 (0-84)</b>
Royal Children's Hospital	2	0	2	0	0 (0-84)	2	0 (0-84)
<b>South Australia</b>	<b>2</b>	<b>1</b>	<b>1</b>	<b>0</b>	<b>50 (1-99)</b>	<b>2</b>	<b>50 (1-99)</b>
Women's and Children's Hospital	2	1	1	0	50 (1-99)	2	50 (1-99)
<b>New Zealand</b>	<b>2</b>	<b>0</b>	<b>2</b>	<b>0</b>	<b>0 (0-84)</b>	<b>1</b>	<b>0 (0-98)</b>
Starship Children's Hospital	2	0	2	0	0 (0-84)	1	0 (0-98)

## 2.4 PD Catheter Planning

### 2.4.1 Adult

This table presents the numbers of patients on peritoneal dialysis at day 90 and the percentage starting kidney replacement therapy (KRT) with peritoneal dialysis during the observation window by Centre. Modality changes of less than 30 days are ignored for the determination of modality at day 90. Patients are excluded from this adult report if they were treated at a paediatric hospital. In rare cases when patients younger than 18 years are treated at an adult centre, they are included in this adult report. Any patients 18 years and older treated at a paediatric hospital are excluded from this report. Finally, the total of Early Referrals (patients seen more than 3 months before first treatment) and the percentage of Early Referrals starting with PD are also presented.

Centre	90-day PD Patients	Started KRT with PD	Did not start KRT with PD	% starting with PD (95 % CI)	Early Referral	% of Early Referrals starting with PD
<b>Australia</b>	<b>846</b>	<b>742</b>	<b>104</b>	<b>88 (85-90)</b>	<b>760</b>	<b>90 (87-92)</b>
<b>Queensland</b>	<b>145</b>	<b>123</b>	<b>22</b>	<b>85 (78-90)</b>	<b>126</b>	<b>88 (81-93)</b>
Bundaberg Hospital	2	2	0	100 (16-100)	2	100 (16-100)
Cairns Hospital	15	9	6	60 (32-84)	14	57 (29-82)
Gold Coast University Hospital	12	8	4	67 (35-90)	10	70 (35-93)
Hervey Bay Hospital	4	4	0	100 (40-100)	4	100 (40-100)
Mackay Base Hospital	1	0	1	0 (0-98)	1	0 (0-98)
Princess Alexandra Hospital	46	40	6	87 (74-95)	40	90 (76-97)
Rockhampton Hospital	2	2	0	100 (16-100)	2	100 (16-100)
Royal Brisbane and Women's Hospital	30	27	3	90 (73-98)	24	100 (86-100)
Sunshine Coast University Hospital	4	4	0	100 (40-100)	4	100 (40-100)
Toowoomba Hospital	17	16	1	94 (71-100)	14	93 (66-100)
Townsville University Hospital	12	11	1	92 (62-100)	11	100 (72-100)
<b>New South Wales</b>	<b>299</b>	<b>264</b>	<b>35</b>	<b>88 (84-92)</b>	<b>279</b>	<b>90 (86-94)</b>
Concord Repatriation General Hospital	9	7	2	78 (40-97)	9	78 (40-97)
Dubbo Base Hospital	1	1	0	100 (2-100)	1	100 (2-100)
Gosford Hospital	6	3	3	50 (12-88)	4	75 (19-99)
John Hunter Hospital	17	17	0	100 (80-100)	17	100 (80-100)
Lismore Base Hospital	7	5	2	71 (29-96)	6	83 (36-100)
Manning Rural Referral Hospital	3	2	1	67 (9-99)	3	67 (9-99)
Nepean Hospital	21	20	1	95 (76-100)	20	95 (75-100)
Orange Health Service	3	3	0	100 (29-100)	3	100 (29-100)

*continued on next page*

continued from previous page

Centre	90-day PD Patients	Started KRT with PD	Did not start KRT with PD	% starting with PD (95 % CI)	Early Referral	% of Early Referrals starting with PD
Port Macquarie Base Hospital	4	2	2	50 (7-93)	4	50 (7-93)
Royal North Shore Hospital	18	16	2	89 (65-99)	11	91 (59-100)
Royal Prince Alfred Hospital	11	10	1	91 (59-100)	10	90 (55-100)
South West Sydney Renal Service	61	57	4	93 (84-98)	60	93 (84-98)
St George Hospital	14	14	0	100 (77-100)	14	100 (77-100)
St Vincent's Hospital Sydney	3	2	1	67 (9-99)	2	100 (16-100)
Tamworth Hospital	7	6	1	86 (42-100)	6	100 (54-100)
The Prince of Wales Hospital	7	6	1	86 (42-100)	7	86 (42-100)
The Tweed Hospital	1	1	0	100 (2-100)	1	100 (2-100)
Wagga Wagga Base Hospital	6	5	1	83 (36-100)	6	83 (36-100)
Westmead Hospital	81	69	12	85 (76-92)	76	87 (77-94)
Wollongong Hospital	19	18	1	95 (74-100)	19	95 (74-100)
<b>Australian Capital Territory</b>	<b>13</b>	<b>8</b>	<b>5</b>	<b>62 (32-86)</b>	<b>10</b>	<b>70 (35-93)</b>
Canberra Hospital	13	8	5	62 (32-86)	10	70 (35-93)
<b>Victoria</b>	<b>193</b>	<b>175</b>	<b>18</b>	<b>91 (86-94)</b>	<b>165</b>	<b>92 (87-96)</b>
Alfred Hospital	27	26	1	96 (81-100)	14	100 (77-100)
Austin Hospital	9	6	3	67 (30-93)	6	83 (36-100)
Bendigo Hospital	9	8	1	89 (52-100)	9	89 (52-100)
Eastern Health Integrated Renal Services	7	7	0	100 (59-100)	7	100 (59-100)
Monash Medical Centre	39	37	2	95 (83-99)	36	97 (85-100)
Northern Health Service Melbourne	11	10	1	91 (59-100)	8	88 (47-100)
St Vincent's Hospital Melbourne	21	18	3	86 (64-97)	17	82 (57-96)
The Royal Melbourne Hospital	45	42	3	93 (82-99)	44	93 (81-99)
University Hospital Geelong Barwon Health	1	0	1	0 (0-98)	1	0 (0-98)
Western Health Service	24	21	3	88 (68-97)	23	91 (72-99)
<b>Tasmania</b>	<b>24</b>	<b>21</b>	<b>3</b>	<b>88 (68-97)</b>	<b>23</b>	<b>91 (72-99)</b>
Launceston General Hospital	18	16	2	89 (65-99)	18	89 (65-99)
Royal Hobart Hospital	6	5	1	83 (36-100)	5	100 (48-100)

continued on next page

continued from previous page

Centre	90-day PD Patients	Started KRT with PD	Did not start KRT with PD	% starting with PD (95 % CI)	Early Referral	% of Early Referrals starting with PD
<b>South Australia</b>	<b>68</b>	<b>57</b>	<b>11</b>	<b>84 (73-92)</b>	<b>66</b>	<b>85 (74-92)</b>
Central Northern Adelaide Renal Service	56	47	9	84 (72-92)	54	85 (73-93)
Flinders Medical Centre	12	10	2	83 (52-98)	12	83 (52-98)
<b>Northern Territory</b>	<b>15</b>	<b>10</b>	<b>5</b>	<b>67 (38-88)</b>	<b>11</b>	<b>64 (31-89)</b>
Alice Springs Hospital	2	1	1	50 (1-99)	2	50 (1-99)
Royal Darwin Hospital	13	9	4	69 (39-91)	9	67 (30-93)
<b>Western Australia</b>	<b>89</b>	<b>84</b>	<b>5</b>	<b>94 (87-98)</b>	<b>80</b>	<b>95 (88-99)</b>
Fiona Stanley Hospital	28	27	1	96 (82-100)	25	96 (80-100)
Royal Perth Hospital	30	29	1	97 (83-100)	27	96 (81-100)
Sir Charles Gairdner Hospital	31	28	3	90 (74-98)	28	93 (76-99)
<b>New Zealand</b>	<b>267</b>	<b>228</b>	<b>39</b>	<b>85 (81-89)</b>	<b>249</b>	<b>87 (82-91)</b>
Auckland City Hospital	15	15	0	100 (78-100)	15	100 (78-100)
Christchurch Hospital	25	18	7	72 (51-88)	24	75 (53-90)
Dunedin Hospital	15	11	4	73 (45-92)	15	73 (45-92)
Hawkes Bay Hospital	7	7	0	100 (59-100)	7	100 (59-100)
Middlemore Hospital	51	42	9	82 (69-92)	45	82 (68-92)
Palmerston North Hospital	10	10	0	100 (69-100)	10	100 (69-100)
Taranaki Hospital	7	7	0	100 (59-100)	7	100 (59-100)
Waikato Hospital	67	61	6	91 (82-97)	63	94 (85-98)
Waitemata Renal Service	16	12	4	75 (48-93)	15	73 (45-92)
Wellington Regional Hospital	43	34	9	79 (64-90)	39	85 (69-94)
Whangarei Hospital	11	11	0	100 (72-100)	9	100 (66-100)



### 2.4.2 Paediatric

This table presents the numbers of patients on peritoneal dialysis at day 90 and the percentage starting kidney replacement therapy (KRT) with peritoneal dialysis during the observation window by Centre. Modality changes of less than 30 days are ignored for the determination of modality at day 90. Patients are included in this paediatric report if they were treated at a paediatric hospital. In rare cases when patients younger than 18 years are treated at an adult centre, they are included in the adult report. Any patients 18 years and older treated at a paediatric hospital are included in this report. Finally, the total of Early Referrals (patients seen more than 3 months before first treatment) and the percentage of Early Referrals starting with PD are also presented.

Centre	90-day PD Patients	Started KRT with PD	Did not start KRT with PD	% starting with PD (95 % CI)	Early Referral	% of Early Referrals starting with PD
<b>Australia</b>	<b>28</b>	<b>24</b>	<b>4</b>	<b>86 (67-96)</b>	<b>16</b>	<b>88 (62-98)</b>
<b>Queensland</b>	<b>7</b>	<b>5</b>	<b>2</b>	<b>71 (29-96)</b>	<b>5</b>	<b>80 (28-99)</b>
Child and Adolescent Renal Service	7	5	2	71 (29-96)	5	80 (28-99)
<b>New South Wales</b>	<b>9</b>	<b>7</b>	<b>2</b>	<b>78 (40-97)</b>	<b>3</b>	<b>67 (9-99)</b>
Sydney Children's Hospital	5	5	0	100 (48-100)	0	–
The Children's Hospital at Westmead	4	2	2	50 (7-93)	3	67 (9-99)
<b>Victoria</b>	<b>10</b>	<b>10</b>	<b>0</b>	<b>100 (69-100)</b>	<b>6</b>	<b>100 (54-100)</b>
Monash Children's Centre	5	5	0	100 (48-100)	3	100 (29-100)
Royal Children's Hospital	5	5	0	100 (48-100)	3	100 (29-100)
<b>Western Australia</b>	<b>2</b>	<b>2</b>	<b>0</b>	<b>100 (16-100)</b>	<b>2</b>	<b>100 (16-100)</b>
Perth Children's Hospital	2	2	0	100 (16-100)	2	100 (16-100)
<b>New Zealand</b>	<b>7</b>	<b>7</b>	<b>0</b>	<b>100 (59-100)</b>	<b>3</b>	<b>100 (29-100)</b>
Starship Children's Hospital	7	7	0	100 (59-100)	3	100 (29-100)



### 3 Transplantation Wait Listing

#### 3.1 Adult

This table presents the numbers of patients aged <65 years who have received kidney replacement therapy (KRT) for 6 months, and the percentage who are transplanted or on the wait list within 6 months of KRT start during the observation window by Centre. The 6 month follow-up time means these patients commenced KRT between Jul 2021 and Jun 2022. Patients are excluded from this adult report if they were treated at a paediatric hospital. In rare cases when patients younger than 18 years are treated at an adult centre, they are included in this adult report. Any patients 18 years and older treated at a paediatric hospital are excluded from this report. This quality indicator is presented for Australia only as New Zealand transplant wait listing data is not currently available to ANZDATA.

Centre	Patients	Transplanted or on wait list within 6 months	Neither transplanted nor on wait list	% transplanted or on wait list within 6 months (95 % CI)
<b>Australia</b>	<b>1720</b>	<b>269</b>	<b>1451</b>	<b>16 (14-17)</b>
<b>Queensland</b>	<b>350</b>	<b>43</b>	<b>307</b>	<b>12 (9-16)</b>
Bundaberg Hospital	7	0	7	0 (0-41)
Cairns Hospital	38	3	35	8 (2-21)
Chermside Dialysis Centre	6	2	4	33 (4-78)
Gold Coast Private Hospital	2	0	2	0 (0-84)
Gold Coast University Hospital	27	2	25	7 (1-24)
Henry Dalziel Dialysis Clinic - Greenslopes	7	0	7	0 (0-41)
Hervey Bay Hospital	5	0	5	0 (0-52)
Ipswich Hospital	12	0	12	0 (0-26)
John Flynn Private Hospital	2	0	2	0 (0-84)
Mackay Base Hospital	8	0	8	0 (0-37)
Mater Hospital, Brisbane	9	1	8	11 (0-48)
Mater Hospital, Townsville	1	0	1	0 (0-98)
North Lakes Dialysis Centre	3	0	3	0 (0-71)
Pindara Renal Unit	3	0	3	0 (0-71)
Princess Alexandra Hospital	83	13	70	16 (9-25)
Rockhampton Hospital	10	2	8	20 (3-56)
Royal Brisbane and Women's Hospital	50	7	43	14 (6-27)
St Andrew's Ipswich Private Hospital	3	1	2	33 (1-91)
Sunshine Coast University Hospital	17	8	9	47 (23-72)

*continued on next page*

continued from previous page

Centre	Patients	Transplanted or on wait list within 6 months	Neither transplanted nor on wait list	% transplanted or on wait list within 6 months (95 % CI)
Sunshine Coast University Private Hospital	2	1	1	50 (1-99)
The Wesley Hospital Brisbane	2	0	2	0 (0-84)
Toowoomba Hospital	16	2	14	12 (2-38)
Townsville University Hospital	37	1	36	3 (0-14)
<b>New South Wales</b>	<b>478</b>	<b>81</b>	<b>397</b>	<b>17 (14-21)</b>
Bathurst Base Hospital	5	1	4	20 (0-72)
Coffs Harbour Hospital	4	3	1	75 (19-99)
Concord Repatriation General Hospital	15	2	13	13 (2-40)
Dubbo Base Hospital	7	0	7	0 (0-41)
Gosford Hospital	22	5	17	23 (8-45)
Gregory Hills B.Braun Renal Care Centre	2	0	2	0 (0-84)
John Hunter Hospital	41	5	36	12 (4-26)
Lismore Base Hospital	14	3	11	21 (5-51)
Liverpool Private Dialysis Centre	3	2	1	67 (9-99)
Manning Rural Referral Hospital	3	0	3	0 (0-71)
Mater Hospital, North Sydney	1	0	1	0 (0-98)
Nepean Hospital	23	2	21	9 (1-28)
Newcastle Dialysis Centre	1	0	1	0 (0-98)
Orange Health Service	6	0	6	0 (0-46)
Port Macquarie Base Hospital	8	0	8	0 (0-37)
Royal North Shore Hospital	40	16	24	40 (25-57)
Royal Prince Alfred Hospital	23	12	11	52 (31-73)
South West Sydney Renal Service	76	6	70	8 (3-16)
St George Hospital	13	2	11	15 (2-45)
St Vincent's Hospital Sydney	19	2	17	11 (1-33)
St Vincent's Lismore Private Dialysis Centre	1	1	0	100 (2-100)
Sydney Adventist Hospital	1	0	1	0 (0-98)
Tamworth Hospital	12	1	11	8 (0-38)
The Prince of Wales Hospital	16	5	11	31 (11-59)
The Tweed Hospital	7	0	7	0 (0-41)
Wagga Wagga Base Hospital	10	1	9	10 (0-45)

continued on next page

continued from previous page

Centre	Patients	Transplanted or on wait list within 6 months	Neither transplanted nor on wait list	% transplanted or on wait list within 6 months (95 % CI)
Westmead Hospital	83	11	72	13 (7-22)
Wollongong Hospital	22	1	21	5 (0-23)
<b>Australian Capital Territory</b>	<b>26</b>	<b>1</b>	<b>25</b>	<b>4 (0-20)</b>
Canberra Hospital	26	1	25	4 (0-20)
<b>Victoria</b>	<b>368</b>	<b>81</b>	<b>287</b>	<b>22 (18-27)</b>
Alfred Hospital	36	4	32	11 (3-26)
Austin Hospital	35	14	21	40 (24-58)
Bendigo Hospital	14	2	12	14 (2-43)
Diamond Valley B.Braun Renal Care Centre	2	2	0	100 (16-100)
Eastern Health Integrated Renal Services	16	2	14	12 (2-38)
Epworth Eastern Hospital	2	0	2	0 (0-84)
Epworth Richmond Hospital	3	1	2	33 (1-91)
Malvern Dialysis Centre	2	0	2	0 (0-84)
Monash Medical Centre	77	19	58	25 (16-36)
Northern Health Service Melbourne	25	3	22	12 (3-31)
St Vincent's Hospital Melbourne	30	3	27	10 (2-27)
The Royal Melbourne Hospital	60	20	40	33 (22-47)
University Hospital Geelong Barwon Health	23	5	18	22 (7-44)
Western Health Service	43	6	37	14 (5-28)
<b>Tasmania</b>	<b>40</b>	<b>8</b>	<b>32</b>	<b>20 (9-36)</b>
Launceston General Hospital	21	2	19	10 (1-30)
Royal Hobart Hospital	19	6	13	32 (13-57)
<b>South Australia</b>	<b>137</b>	<b>17</b>	<b>120</b>	<b>12 (7-19)</b>
Central Northern Adelaide Renal Service	107	14	93	13 (7-21)
Flinders Medical Centre	30	3	27	10 (2-27)
<b>Northern Territory</b>	<b>120</b>	<b>1</b>	<b>119</b>	<b>1 (0-5)</b>
Alice Springs Hospital	54	0	54	0 (0-7)

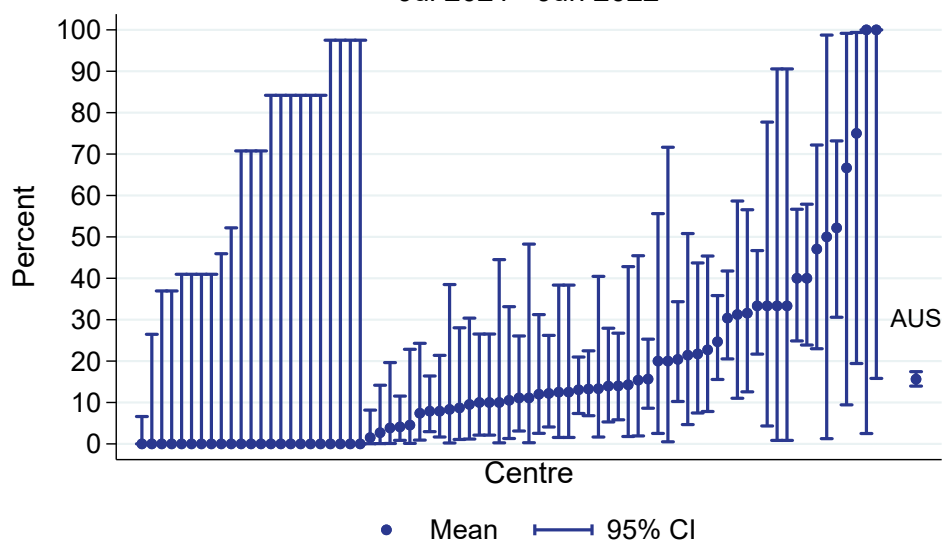
continued on next page

*continued from previous page*

<b>Centre</b>	<b>Patients</b>	<b>Transplanted or on wait list within 6 months</b>	<b>Neither transplanted nor on wait list</b>	<b>% transplanted or on wait list within 6 months (95 % CI)</b>
Royal Darwin Hospital	66	1	65	2 (0-8)
<b>Western Australia</b>	<b>201</b>	<b>37</b>	<b>164</b>	<b>18 (13-24)</b>
Fiona Stanley Hospital	79	24	55	30 (21-42)
Royal Perth Hospital	73	3	70	4 (1-12)
Sir Charles Gairdner Hospital	49	10	39	20 (10-34)

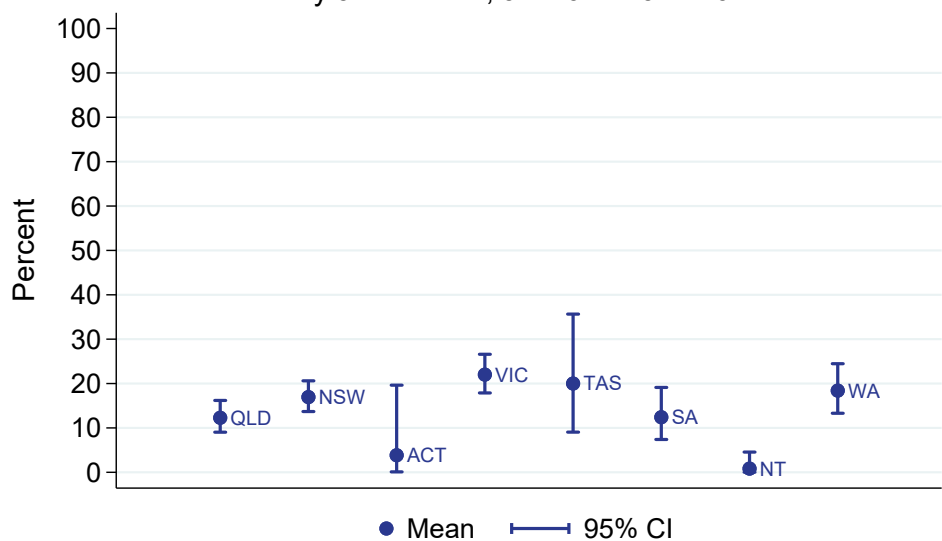
Transplantation wait listing (had a tx or on wl within 6 months)  
 % of all new adult patients aged <65 years

Jul 2021 - Jun 2022



Transplantation wait listing (had a tx or on wl within 6 months)  
 % of all new adult patients aged <65 years

By Jurisdiction, Jul 2021 - Jun 2022



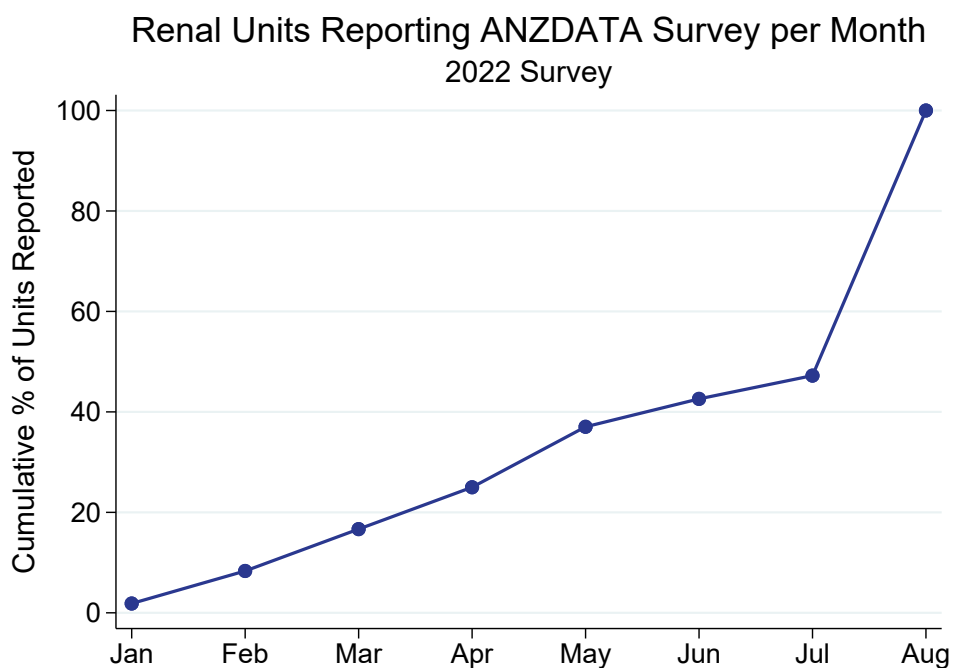
### 3.2 Paediatric

This table presents the numbers of patients aged  $\geq 2$  years who have received kidney replacement therapy (KRT) for 6 months, and the percentage who are transplanted or on the wait list within 6 months of KRT start during the observation window by Centre. The 6 month follow-up time means these patients commenced KRT between Jul 2021 and Jun 2022. Patients are included in this paediatric report if they were treated at a paediatric hospital. In rare cases when patients younger than 18 years are treated at an adult centre, they are included in the adult report. Any patients 18 years and older treated at a paediatric hospital are included in this report. This quality indicator is presented for Australia only as New Zealand transplant wait listing data is not currently available to ANZDATA.

Centre	Patients	Transplanted or on wait list within 6 months	Neither transplanted nor on wait list	% transplanted or on wait list within 6 months (95 % CI)
<b>Australia</b>	<b>39</b>	<b>19</b>	<b>20</b>	<b>49 (32-65)</b>
<b>Queensland</b>	<b>10</b>	<b>3</b>	<b>7</b>	<b>30 (7-65)</b>
Child and Adolescent Renal Service	10	3	7	30 (7-65)
<b>New South Wales</b>	<b>12</b>	<b>7</b>	<b>5</b>	<b>58 (28-85)</b>
Sydney Children's Hospital	3	1	2	33 (1-91)
The Children's Hospital at Westmead	9	6	3	67 (30-93)
<b>Victoria</b>	<b>13</b>	<b>6</b>	<b>7</b>	<b>46 (19-75)</b>
Monash Children's Centre	4	1	3	25 (1-81)
Royal Children's Hospital	9	5	4	56 (21-86)
<b>South Australia</b>	<b>1</b>	<b>0</b>	<b>1</b>	<b>0 (0-98)</b>
Women's and Children's Hospital	1	0	1	0 (0-98)
<b>Western Australia</b>	<b>3</b>	<b>3</b>	<b>0</b>	<b>100 (29-100)</b>
Perth Children's Hospital	3	3	0	100 (29-100)

## 4 ANZDATA annual data survey timeliness

This figure shows the cumulative percentage of renal units that returned their annual ANZDATA survey each month following 31 December 2022. The date of survey return is the date ANZDATA received notification that all annual data submission and data validations have been addressed for data lock. This survey return date identifies a Renal Unit is complete for quality indicator reporting.



This table presents the month of annual ANZDATA survey return by each renal unit following 31 December 2022.

Centre	Month of return
<b>Queensland</b>	
Bundaberg Hospital	Feb
Cairns Hospital	Mar
Cairns Private Hospital	Jan
Chermside Dialysis Centre	May
Child and Adolescent Renal Service	Aug
Gold Coast Private Hospital	Jun
Gold Coast University Hospital	Aug
Henry Dalziel Dialysis Clinic - Greenslopes	Aug
Hervey Bay Hospital	May
Ipswich Hospital	Apr
John Flynn Private Hospital	Aug
Mackay Base Hospital	Mar
Mater Hospital, Brisbane	Apr
Mater Hospital, Townsville	May
Morayfield B.Braun Renal Care Centre	Jul
Mount Isa Base Hospital	Aug
Nambour Selangor Private Hospital	May
North Lakes Dialysis Centre	May
Pindara Renal Unit	Mar
Princess Alexandra Hospital	May
Queensland Kidney Transplant Service	May
Rockhampton Hospital	Aug
Royal Brisbane and Women's Hospital	Aug
St Andrew's Ipswich Private Hospital	Aug
St Andrew's Toowoomba B.Braun's Dialysis Clinic	Apr
Sunshine Coast University Hospital	Mar
Sunshine Coast University Private Hospital	Apr
The Wesley Hospital Brisbane	Aug
Toowoomba Hospital	Mar
Torres & Cape Kidney Health	Jan
Townsville University Hospital	Aug
<b>New South Wales</b>	
Bathurst Base Hospital	Aug
Coffs Harbour Hospital	Aug
Concord Repatriation General Hospital	Aug
Dubbo Base Hospital	Aug
Gosford Hospital	Aug
Gregory Hills B.Braun Renal Care Centre	Aug
John Hunter Hospital	Aug
Lismore Base Hospital	Jul
Liverpool Private Dialysis Centre	Jun
Manning Rural Referral Hospital	Aug
Mater Hospital, North Sydney	Aug
Mayo Private Hospital	May
Nepean Hospital	Incomplete Data
Newcastle Dialysis Centre	Feb
Orange Health Service	Aug
Port Macquarie Base Hospital	Aug

*continued on next page*



continued from previous page

Centre	Month of return
Port Macquarie Private Hospital	Feb
Royal North Shore Hospital	Aug
Royal Prince Alfred Hospital	Aug
South West Sydney Renal Service	Aug
St George Hospital	May
St Vincent's Hospital Sydney	Apr
St Vincent's Lismore Private Dialysis Centre	Mar
Sydney Adventist Hospital	Feb
Sydney Children's Hospital	Apr
Tamworth Hospital	Aug
The Children's Hospital at Westmead	Aug
The Prince of Wales Hospital	Mar
The Tweed Hospital	Aug
Wagga Wagga Base Hospital	Aug
Westmead Hospital	Incomplete Data
Wollongong Hospital	Aug
<b>Australian Capital Territory</b>	
Access Nephrology	Aug
Canberra Hospital	Mar
<b>Victoria</b>	
Alfred Hospital	Aug
Austin Hospital	Jul
Bendigo Hospital	May
Diamond Valley B.Braun Renal Care Centre	May
Eastern Health Integrated Renal Services	Aug
Epworth Eastern Hospital	Apr
Epworth Geelong Hospital	Aug
Epworth Richmond Hospital	Jun
Forest Hill Dialysis Centre	Aug
Malvern Dialysis Centre	Feb
Monash Children's Centre	Feb
Monash Medical Centre	Aug
North Melbourne B.Braun Renal Care Centre	May
Northern Health Service Melbourne	Aug
Royal Children's Hospital	Apr
St Vincent's Hospital Melbourne	Aug
Sunshine Private Dialysis Centre Fresenius	Aug
The Royal Melbourne Hospital	Aug
University Hospital Geelong Barwon Health	Aug
Western Health Service	Aug
<b>Tasmania</b>	
Launceston General Hospital	Jul
Royal Hobart Hospital	Mar
<b>South Australia</b>	
Central Northern Adelaide Renal Service	Aug
Flinders Medical Centre	Jul
Women's and Children's Hospital	Jun

continued on next page

*continued from previous page*

<b>Centre</b>	<b>Month of return</b>
<b>Northern Territory</b>	
Alice Springs Hospital	Aug
Royal Darwin Hospital	Aug
<b>Western Australia</b>	
Fiona Stanley Hospital	Aug
Perth Children's Hospital	Aug
Royal Perth Hospital	Aug
Sir Charles Gairdner Hospital	Aug
<b>New Zealand</b>	
Auckland City Hospital	Aug
Christchurch Hospital	Aug
Dunedin Hospital	Jun
Hawkes Bay Hospital	May
Middlemore Hospital	Aug
Palmerston North Hospital	Aug
Starship Children's Hospital	Feb
Taranaki Hospital	Apr
Waikato Hospital	Aug
Waitemata Renal Service	Aug
Wellington Regional Hospital	Jun
Whangarei Hospital	Aug

## 5 Kidney Replacement Therapy (KRT) Modality

### 5.1 Incident Modality

#### 5.1.1 Adult

This table presents the numbers (N) of incident kidney replacement therapy (KRT) patients during the observation window by modality at commencement and centre. Modality is categorised as pre-emptive kidney transplant (TX), peritoneal dialysis (PD), home haemodialysis (including commencing training) and community house haemodialysis (HHD\*) and facility haemodialysis (FacHD). Also presented are the percentages (%) of each modality out of the total incident KRT cohort. Patients are excluded from this adult report if they were treated at a paediatric hospital. In rare cases when patients younger than 18 years are treated at an adult centre, they are included in this adult report. Any patients 18 years and older treated at a paediatric hospital are excluded from this report.

Centre	N KRT	N TX	% TX	N PD	% PD	N HHD*	% HHD*	N FacHD	% FacHD
<b>Australia</b>	<b>3359</b>	<b>85</b>	<b>3</b>	<b>802</b>	<b>24</b>	<b>77</b>	<b>2</b>	<b>2395</b>	<b>71</b>
<b>Queensland</b>	<b>643</b>	<b>9</b>	<b>1</b>	<b>124</b>	<b>19</b>	<b>15</b>	<b>2</b>	<b>495</b>	<b>77</b>
Bundaberg Hospital	15	0	0	1	7	0	0	14	93
Cairns Hospital	69	0	0	11	16	5	7	53	77
Chermside Dialysis Centre	12	0	0	0	0	0	0	12	100
Gold Coast Private Hospital	19	0	0	0	0	0	0	19	100
Gold Coast University Hospital	48	0	0	7	15	2	4	39	81
Henry Dalziel Dialysis Clinic - Greenslopes	22	0	0	0	0	0	0	22	100
Hervey Bay Hospital	18	1	6	3	17	0	0	14	78
Ipswich Hospital	20	0	0	2	10	0	0	18	90
John Flynn Private Hospital	11	0	0	0	0	0	0	11	100
Mackay Base Hospital	25	0	0	1	4	0	0	24	96
Mater Hospital, Brisbane	17	2	12	0	0	0	0	15	88
Mater Hospital, Townsville	6	0	0	0	0	0	0	6	100
Nambour Selangor Private Hospital	3	0	0	0	0	0	0	3	100
North Lakes Dialysis Centre	9	0	0	0	0	0	0	9	100
Pindara Renal Unit	6	0	0	0	0	0	0	6	100
Princess Alexandra Hospital	101	4	4	36	36	8	8	53	52
Rockhampton Hospital	14	0	0	4	29	0	0	10	71
Royal Brisbane and Women's Hospital	72	0	0	25	35	0	0	47	65
St Andrew's Ipswich Private Hospital	6	0	0	0	0	0	0	6	100
St Andrew's Toowoomba B.Braun's Dialysis Clinic	6	0	0	0	0	0	0	6	100
Sunshine Coast University Hospital	36	1	3	5	14	0	0	30	83
Sunshine Coast University Private Hospital	3	0	0	0	0	0	0	3	100

*continued on next page*

continued from previous page

Centre	N KRT	N TX	% TX	N PD	% PD	N HHD*	% HHD*	N FacHD	% FacHD
The Wesley Hospital Brisbane	14	0	0	0	0	0	0	14	100
Toowoomba Hospital	30	1	3	17	57	0	0	12	40
Townsville University Hospital	61	0	0	12	20	0	0	49	80
<b>New South Wales</b>	<b>1006</b>	<b>34</b>	<b>3</b>	<b>285</b>	<b>28</b>	<b>37</b>	<b>4</b>	<b>650</b>	<b>65</b>
Bathurst Base Hospital	7	0	0	0	0	0	0	7	100
Coffs Harbour Hospital	16	1	6	0	0	0	0	15	94
Concord Repatriation General Hospital	32	0	0	8	25	0	0	24	75
Dubbo Base Hospital	10	0	0	1	10	0	0	9	90
Gosford Hospital	50	0	0	4	8	0	0	46	92
Gregory Hills B.Braun Renal Care Centre	7	0	0	0	0	0	0	7	100
John Hunter Hospital	70	1	1	19	27	0	0	50	71
Lismore Base Hospital	14	1	7	4	29	0	0	9	64
Liverpool Private Dialysis Centre	2	0	0	0	0	0	0	2	100
Manning Rural Referral Hospital	8	0	0	0	0	0	0	8	100
Mater Hospital, North Sydney	5	0	0	0	0	0	0	5	100
Mayo Private Hospital	1	0	0	0	0	0	0	1	100
Nepean Hospital	49	0	0	20	41	2	4	27	55
Newcastle Dialysis Centre	5	0	0	0	0	0	0	5	100
Orange Health Service	11	0	0	3	27	0	0	8	73
Port Macquarie Base Hospital	16	0	0	2	12	0	0	14	88
Port Macquarie Private Hospital	3	0	0	0	0	0	0	3	100
Royal North Shore Hospital	79	11	14	19	24	3	4	46	58
Royal Prince Alfred Hospital	60	7	12	13	22	0	0	40	67
South West Sydney Renal Service	164	1	1	59	36	10	6	94	57
St George Hospital	56	1	2	18	32	3	5	34	61
St Vincent's Hospital Sydney	33	1	3	5	15	0	0	27	82
St Vincent's Lismore Private Dialysis Centre	1	0	0	0	0	0	0	1	100
Sydney Adventist Hospital	6	0	0	0	0	0	0	6	100
Tamworth Hospital	18	0	0	6	33	0	0	12	67
The Prince of Wales Hospital	31	3	10	6	19	1	3	21	68
The Tweed Hospital	12	0	0	2	17	0	0	10	83
Wagga Wagga Base Hospital	25	0	0	5	20	0	0	20	80
Westmead Hospital	174	7	4	75	43	17	10	75	43
Wollongong Hospital	41	0	0	16	39	1	2	24	59

continued on next page

continued from previous page

Centre	N KRT	N TX	% TX	N PD	% PD	N HHD*	% HHD*	N FacHD	% FacHD
<b>Australian Capital Territory</b>	<b>80</b>	<b>0</b>	<b>0</b>	<b>9</b>	<b>11</b>	<b>6</b>	<b>8</b>	<b>65</b>	<b>81</b>
Access Nephrology	11	0	0	0	0	0	0	11	100
Canberra Hospital	69	0	0	9	13	6	9	54	78
<b>Victoria</b>	<b>793</b>	<b>22</b>	<b>3</b>	<b>215</b>	<b>27</b>	<b>5</b>	<b>1</b>	<b>551</b>	<b>69</b>
Alfred Hospital	67	0	0	29	43	0	0	38	57
Austin Hospital	81	5	6	5	6	1	1	70	86
Bendigo Hospital	26	0	0	10	38	0	0	16	62
Diamond Valley B.Braun Renal Care Centre	5	0	0	0	0	0	0	5	100
Eastern Health Integrated Renal Services	44	1	2	11	25	0	0	32	73
Epworth Eastern Hospital	5	0	0	0	0	0	0	5	100
Epworth Richmond Hospital	4	0	0	0	0	0	0	4	100
Forest Hill Dialysis Centre	7	0	0	0	0	0	0	7	100
Malvern Dialysis Centre	16	0	0	0	0	0	0	16	100
Monash Medical Centre	167	5	3	54	32	2	1	106	63
North Melbourne B.Braun Renal Care Centre	2	0	0	0	0	0	0	2	100
Northern Health Service Melbourne	55	0	0	9	16	0	0	46	84
St Vincent's Hospital Melbourne	73	2	3	23	32	0	0	48	66
Sunshine Private Dialysis Centre Fresenius	3	0	0	0	0	0	0	3	100
The Royal Melbourne Hospital	131	9	7	43	33	1	1	78	60
University Hospital Geelong Barwon Health	29	0	0	3	10	1	3	25	86
Western Health Service	78	0	0	28	36	0	0	50	64
<b>Tasmania</b>	<b>67</b>	<b>3</b>	<b>4</b>	<b>18</b>	<b>27</b>	<b>0</b>	<b>0</b>	<b>46</b>	<b>69</b>
Launceston General Hospital	44	1	2	15	34	0	0	28	64
Royal Hobart Hospital	23	2	9	3	13	0	0	18	78
<b>South Australia</b>	<b>240</b>	<b>8</b>	<b>3</b>	<b>50</b>	<b>21</b>	<b>5</b>	<b>2</b>	<b>177</b>	<b>74</b>
Central Northern Adelaide Renal Service	189	5	3	41	22	5	3	138	73
Flinders Medical Centre	51	3	6	9	18	0	0	39	76
<b>Northern Territory</b>	<b>145</b>	<b>0</b>	<b>0</b>	<b>14</b>	<b>10</b>	<b>0</b>	<b>0</b>	<b>131</b>	<b>90</b>
Alice Springs Hospital	65	0	0	1	2	0	0	64	98
Royal Darwin Hospital	80	0	0	13	16	0	0	67	84

continued on next page

continued from previous page

Centre	N KRT	N TX	% TX	N PD	% PD	N HHD*	% HHD*	N FacHD	% FacHD
<b>Western Australia</b>	<b>385</b>	<b>9</b>	<b>2</b>	<b>87</b>	<b>23</b>	<b>9</b>	<b>2</b>	<b>280</b>	<b>73</b>
Fiona Stanley Hospital	144	4	3	29	20	3	2	108	75
Royal Perth Hospital	130	0	0	24	18	3	2	103	79
Sir Charles Gairdner Hospital	111	5	5	34	31	3	3	69	62
<b>New Zealand</b>	<b>675</b>	<b>22</b>	<b>3</b>	<b>226</b>	<b>33</b>	<b>17</b>	<b>3</b>	<b>410</b>	<b>61</b>
Auckland City Hospital	71	2	3	17	24	7	10	45	63
Christchurch Hospital	47	9	19	16	34	0	0	22	47
Dunedin Hospital	30	0	0	14	47	0	0	16	53
Hawkes Bay Hospital	18	1	6	8	44	0	0	9	50
Middlemore Hospital	151	0	0	36	24	6	4	109	72
Palmerston North Hospital	16	0	0	9	56	0	0	7	44
Taranaki Hospital	10	0	0	5	50	0	0	5	50
Waikato Hospital	133	1	1	59	44	2	2	71	53
Waitemata Renal Service	91	4	4	17	19	0	0	70	77
Wellington Regional Hospital	84	5	6	36	43	2	2	41	49
Whangarei Hospital	24	0	0	9	38	0	0	15	62

### 5.1.2 Paediatric

This table presents the numbers (N) of incident kidney replacement therapy (KRT) patients during the observation window by modality at commencement and centre. Modality is categorised as pre-emptive kidney transplant (TX), peritoneal dialysis (PD), home haemodialysis (including commencing training) and community house haemodialysis (HHD\*) and facility haemodialysis (FacHD). Also presented are the percentages (%) of each modality out of the total incident KRT cohort. Patients are included in this paediatric report if they were treated at a paediatric hospital. In rare cases when patients younger than 18 years are treated at an adult centre, they are included in the adult report. Any patients 18 years and older treated at a paediatric hospital are included in this report.

Centre	N KRT	N TX	% TX	N PD	% PD	N HHD*	% HHD*	N FacHD	% FacHD
<b>Australia</b>	<b>44</b>	<b>7</b>	<b>16</b>	<b>28</b>	<b>64</b>	<b>0</b>	<b>0</b>	<b>9</b>	<b>20</b>
<b>Queensland</b>	<b>9</b>	<b>0</b>	<b>0</b>	<b>8</b>	<b>89</b>	<b>0</b>	<b>0</b>	<b>1</b>	<b>11</b>
Child and Adolescent Renal Service	9	0	0	8	89	0	0	1	11
<b>New South Wales</b>	<b>13</b>	<b>3</b>	<b>23</b>	<b>7</b>	<b>54</b>	<b>0</b>	<b>0</b>	<b>3</b>	<b>23</b>
Sydney Children's Hospital	5	0	0	5	100	0	0	0	0
The Children's Hospital at Westmead	8	3	38	2	25	0	0	3	38
<b>Victoria</b>	<b>17</b>	<b>2</b>	<b>12</b>	<b>12</b>	<b>71</b>	<b>0</b>	<b>0</b>	<b>3</b>	<b>18</b>
Monash Children's Centre	7	0	0	7	100	0	0	0	0
Royal Children's Hospital	10	2	20	5	50	0	0	3	30
<b>South Australia</b>	<b>1</b>	<b>0</b>	<b>0</b>	<b>0</b>	<b>0</b>	<b>0</b>	<b>0</b>	<b>1</b>	<b>100</b>
Women's and Children's Hospital	1	0	0	0	0	0	0	1	100
<b>Western Australia</b>	<b>4</b>	<b>2</b>	<b>50</b>	<b>1</b>	<b>25</b>	<b>0</b>	<b>0</b>	<b>1</b>	<b>25</b>
Perth Children's Hospital	4	2	50	1	25	0	0	1	25
<b>New Zealand</b>	<b>7</b>	<b>1</b>	<b>14</b>	<b>6</b>	<b>86</b>	<b>0</b>	<b>0</b>	<b>0</b>	<b>0</b>
Starship Children's Hospital	7	1	14	6	86	0	0	0	0

## 5.2 Prevalent Modality

### 5.2.1 Adult

This table presents the numbers (N) of prevalent kidney replacement therapy (KRT) patients at the end of the observation window by modality and centre. Modality is categorised as functioning kidney transplant (TX), peritoneal dialysis (PD), home haemodialysis including community house haemodialysis (HHD\*) and facility haemodialysis (FacHD). Also presented are the percentages (%) of each modality out of the total prevalent KRT cohort. Patients are excluded from this adult report if they were treated at a paediatric hospital. In rare cases when patients younger than 18 years are treated at an adult centre, they are included in this adult report. Any patients 18 years and older treated at a paediatric hospital are excluded from this report.

Centre	N KRT	N TX	% TX	N PD	% PD	N HHD*	% HHD*	N FacHD	% FacHD
<b>Australia</b>	<b>28695</b>	<b>13242</b>	<b>46</b>	<b>2602</b>	<b>9</b>	<b>1134</b>	<b>4</b>	<b>11717</b>	<b>41</b>
<b>Queensland</b>	<b>5652</b>	<b>2489</b>	<b>44</b>	<b>456</b>	<b>8</b>	<b>247</b>	<b>4</b>	<b>2460</b>	<b>44</b>
Bundaberg Hospital	147	65	44	10	7	2	1	70	48
Cairns Hospital	467	119	25	38	8	31	7	279	60
Cairns Private Hospital	23	0	0	0	0	0	0	23	100
Chermside Dialysis Centre	67	23	34	0	0	0	0	44	66
Gold Coast Private Hospital	51	0	0	0	0	0	0	51	100
Gold Coast University Hospital	491	247	50	42	9	32	7	170	35
Henry Dalziel Dialysis Clinic - Greenslopes	156	58	37	0	0	0	0	98	63
Hervey Bay Hospital	126	42	33	12	10	1	1	71	56
Ipswich Hospital	89	10	11	9	10	0	0	70	79
John Flynn Private Hospital	107	75	70	0	0	0	0	32	30
Mackay Base Hospital	166	64	39	13	8	0	0	89	54
Mater Hospital, Brisbane	118	39	33	0	0	0	0	79	67
Mater Hospital, Townsville	32	0	0	0	0	0	0	32	100
Morayfield B.Braun Renal Care Centre	7	0	0	0	0	0	0	7	100
Mount Isa Base Hospital	60	8	13	0	0	0	0	52	87
Nambour Selangor Private Hospital	14	0	0	0	0	0	0	14	100
North Lakes Dialysis Centre	37	0	0	0	0	0	0	37	100
Pindara Renal Unit	22	0	0	0	0	0	0	22	100
Princess Alexandra Hospital	529	0	0	155	29	83	16	291	55
Queensland Kidney Transplant Service	855	855	100	0	0	0	0	0	0
Rockhampton Hospital	167	73	44	14	8	3	2	77	46
Royal Brisbane and Women's Hospital	597	212	36	72	12	45	8	268	45
St Andrew's Ipswich Private Hospital	39	3	8	0	0	0	0	36	92
St Andrew's Toowoomba B.Braun's Dialysis Clinic	22	0	0	0	0	0	0	22	100

*continued on next page*



continued from previous page

Centre	N KRT	N TX	% TX	N PD	% PD	N HHD*	% HHD*	N FacHD	% FacHD
Sunshine Coast University Hospital	389	233	60	12	3	13	3	131	34
Sunshine Coast University Private Hospital	28	0	0	0	0	0	0	28	100
The Wesley Hospital Brisbane	179	123	69	0	0	0	0	56	31
Toowoomba Hospital	255	112	44	33	13	22	9	88	35
Torres & Cape Kidney Health	53	15	28	0	0	0	0	38	72
Townsville University Hospital	359	113	31	46	13	15	4	185	52
<b>New South Wales</b>	<b>8242</b>	<b>3642</b>	<b>44</b>	<b>990</b>	<b>12</b>	<b>460</b>	<b>6</b>	<b>3150</b>	<b>38</b>
Bathurst Base Hospital	37	12	32	0	0	0	0	25	68
Coffs Harbour Hospital	133	68	51	2	2	5	4	58	44
Concord Repatriation General Hospital	290	112	39	44	15	16	6	118	41
Dubbo Base Hospital	136	63	46	9	7	4	3	60	44
Gosford Hospital	341	128	38	18	5	12	4	183	54
Gregory Hills B.Braun Renal Care Centre	30	0	0	0	0	0	0	30	100
John Hunter Hospital	639	359	56	52	8	36	6	192	30
Lismore Base Hospital	184	89	48	14	8	12	7	69	38
Liverpool Private Dialysis Centre	24	0	0	0	0	0	0	24	100
Manning Rural Referral Hospital	80	16	20	10	12	2	2	52	65
Mater Hospital, North Sydney	71	35	49	0	0	0	0	36	51
Mayo Private Hospital	19	0	0	0	0	0	0	19	100
Nepean Hospital	328	135	41	51	16	4	1	138	42
Newcastle Dialysis Centre	52	0	0	0	0	0	0	52	100
Orange Health Service	101	41	41	11	11	2	2	47	47
Port Macquarie Base Hospital	122	44	36	11	9	6	5	61	50
Port Macquarie Private Hospital	13	0	0	0	0	0	0	13	100
Royal North Shore Hospital	656	333	51	49	7	48	7	226	34
Royal Prince Alfred Hospital	639	408	64	39	6	49	8	143	22
South West Sydney Renal Service	1167	418	36	234	20	76	7	439	38
St George Hospital	494	236	48	46	9	33	7	179	36
St Vincent's Hospital Sydney	239	117	49	22	9	25	10	75	31
St Vincent's Lismore Private Dialysis Centre	18	0	0	0	0	0	0	18	100
Sydney Adventist Hospital	40	0	0	0	0	0	0	40	100
Tamworth Hospital	156	65	42	13	8	5	3	73	47
The Prince of Wales Hospital	302	170	56	30	10	6	2	96	32
The Tweed Hospital	77	11	14	11	14	0	0	55	71

continued on next page

continued from previous page

Centre	N KRT	N TX	% TX	N PD	% PD	N HHD*	% HHD*	N FacHD	% FacHD
Wagga Wagga Base Hospital	169	49	29	16	9	8	5	96	57
Westmead Hospital	1288	563	44	257	20	96	7	372	29
Wollongong Hospital	397	170	43	51	13	15	4	161	41
<b>Australian Capital Territory</b>	<b>633</b>	<b>305</b>	<b>48</b>	<b>39</b>	<b>6</b>	<b>25</b>	<b>4</b>	<b>264</b>	<b>42</b>
Access Nephrology	118	88	75	0	0	0	0	30	25
Canberra Hospital	515	217	42	39	8	25	5	234	45
<b>Victoria</b>	<b>7411</b>	<b>3848</b>	<b>52</b>	<b>617</b>	<b>8</b>	<b>229</b>	<b>3</b>	<b>2717</b>	<b>37</b>
Alfred Hospital	568	293	52	84	15	7	1	184	32
Austin Hospital	719	445	62	33	5	31	4	210	29
Bendigo Hospital	146	32	22	36	25	0	0	78	53
Diamond Valley B.Braun Renal Care Centre	51	0	0	0	0	0	0	51	100
Eastern Health Integrated Renal Services	443	193	44	35	8	18	4	197	44
Epworth Eastern Hospital	46	0	0	0	0	0	0	46	100
Epworth Geelong Hospital	16	0	0	0	0	0	0	16	100
Epworth Richmond Hospital	40	0	0	0	0	0	0	40	100
Forest Hill Dialysis Centre	61	0	0	0	0	0	0	61	100
Malvern Dialysis Centre	69	0	0	0	0	0	0	69	100
Monash Medical Centre	1757	1037	59	118	7	69	4	533	30
North Melbourne B.Braun Renal Care Centre	23	0	0	0	0	0	0	23	100
Northern Health Service Melbourne	242	56	23	35	14	8	3	143	59
St Vincent's Hospital Melbourne	582	276	47	69	12	9	2	228	39
Sunshine Private Dialysis Centre Fresenius	29	0	0	0	0	0	0	29	100
The Royal Melbourne Hospital	1803	1225	68	104	6	43	2	431	24
University Hospital Geelong Barwon Health	321	175	55	21	7	24	7	101	31
Western Health Service	495	116	23	82	17	20	4	277	56
<b>Tasmania</b>	<b>555</b>	<b>319</b>	<b>57</b>	<b>48</b>	<b>9</b>	<b>8</b>	<b>1</b>	<b>180</b>	<b>32</b>
Launceston General Hospital	299	152	51	38	13	6	2	103	34
Royal Hobart Hospital	256	167	65	10	4	2	1	77	30
<b>South Australia</b>	<b>2179</b>	<b>1132</b>	<b>52</b>	<b>159</b>	<b>7</b>	<b>34</b>	<b>2</b>	<b>854</b>	<b>39</b>
Central Northern Adelaide Renal Service	1688	884	52	123	7	32	2	649	38
Flinders Medical Centre	491	248	51	36	7	2	0	205	42

continued on next page

continued from previous page

Centre	N KRT	N TX	% TX	N PD	% PD	N HHD*	% HHD*	N FacHD	% FacHD
<b>Northern Territory</b>	<b>967</b>	<b>158</b>	<b>16</b>	<b>43</b>	<b>4</b>	<b>29</b>	<b>3</b>	<b>737</b>	<b>76</b>
Alice Springs Hospital	476	53	11	6	1	5	1	412	87
Royal Darwin Hospital	491	105	21	37	8	24	5	325	66
<b>Western Australia</b>	<b>3056</b>	<b>1349</b>	<b>44</b>	<b>250</b>	<b>8</b>	<b>102</b>	<b>3</b>	<b>1355</b>	<b>44</b>
Fiona Stanley Hospital	1172	565	48	61	5	35	3	511	44
Royal Perth Hospital	893	282	32	71	8	37	4	503	56
Sir Charles Gairdner Hospital	991	502	51	118	12	30	3	341	34
<b>New Zealand</b>	<b>5413</b>	<b>2265</b>	<b>42</b>	<b>761</b>	<b>14</b>	<b>383</b>	<b>7</b>	<b>2004</b>	<b>37</b>
Auckland City Hospital	661	272	41	47	7	54	8	288	44
Christchurch Hospital	474	323	68	73	15	26	5	52	11
Dunedin Hospital	229	134	59	35	15	38	17	22	10
Hawkes Bay Hospital	177	94	53	15	8	9	5	59	33
Middlemore Hospital	1022	271	27	146	14	78	8	527	52
Palmerston North Hospital	327	103	31	35	11	20	6	169	52
Taranaki Hospital	107	58	54	14	13	4	4	31	29
Waikato Hospital	891	316	35	215	24	74	8	286	32
Waitemata Renal Service	587	261	44	46	8	41	7	239	41
Wellington Regional Hospital	657	320	49	106	16	26	4	205	31
Whangarei Hospital	281	113	40	29	10	13	5	126	45

### 5.2.2 Paediatric

This table presents the numbers (N) of prevalent kidney replacement therapy (KRT) patients at the end of the observation window by modality and centre. Modality is categorised as functioning kidney transplant (TX), peritoneal dialysis (PD), home haemodialysis including community house haemodialysis (HHD\*) and facility haemodialysis (FacHD). Also presented are the percentages (%) of each modality out of the total prevalent KRT cohort. Patients are included in this paediatric report if they were treated at a paediatric hospital. In rare cases when patients younger than 18 years are treated at an adult centre, they are included in the adult report. Any patients 18 years and older treated at a paediatric hospital are included in this report.

Centre	N KRT	N TX	% TX	N PD	% PD	N HHD*	% HHD*	N FacHD	% FacHD
<b>Australia</b>	<b>330</b>	<b>265</b>	<b>80</b>	<b>55</b>	<b>17</b>	<b>0</b>	<b>0</b>	<b>10</b>	<b>3</b>
<b>Queensland</b>	<b>81</b>	<b>60</b>	<b>74</b>	<b>20</b>	<b>25</b>	<b>0</b>	<b>0</b>	<b>1</b>	<b>1</b>
Child and Adolescent Renal Service	81	60	74	20	25	0	0	1	1
<b>New South Wales</b>	<b>106</b>	<b>94</b>	<b>89</b>	<b>12</b>	<b>11</b>	<b>0</b>	<b>0</b>	<b>0</b>	<b>0</b>
Sydney Children's Hospital	29	21	72	8	28	0	0	0	0
The Children's Hospital at Westmead	77	73	95	4	5	0	0	0	0
<b>Victoria</b>	<b>98</b>	<b>75</b>	<b>77</b>	<b>18</b>	<b>18</b>	<b>0</b>	<b>0</b>	<b>5</b>	<b>5</b>
Monash Children's Centre	30	17	57	10	33	0	0	3	10
Royal Children's Hospital	68	58	85	8	12	0	0	2	3
<b>South Australia</b>	<b>19</b>	<b>14</b>	<b>74</b>	<b>4</b>	<b>21</b>	<b>0</b>	<b>0</b>	<b>1</b>	<b>5</b>
Women's and Children's Hospital	19	14	74	4	21	0	0	1	5
<b>Western Australia</b>	<b>26</b>	<b>22</b>	<b>85</b>	<b>1</b>	<b>4</b>	<b>0</b>	<b>0</b>	<b>3</b>	<b>12</b>
Perth Children's Hospital	26	22	85	1	4	0	0	3	12
<b>New Zealand</b>	<b>61</b>	<b>52</b>	<b>85</b>	<b>7</b>	<b>11</b>	<b>0</b>	<b>0</b>	<b>2</b>	<b>3</b>
Starship Children's Hospital	61	52	85	7	11	0	0	2	3