

**ANZ
DATA**



**AUSTRALIA &
NEW ZEALAND**

LIVING KIDNEY DONATION
REGISTRY

Monthly Report on Living Kidney Donation in New Zealand

December 2021

Produced 17 February 2022 8:55 AM
Data Received by ANZDATA up to 16 February 2022

Contents

Explanatory Notes	2
Definitions	2
Notes	2
Summary of New Zealand Living Kidney Donation	3
Total New Zealand Living Kidney Donors by Transplant Hospital	4
New Zealand Genetically-Related Donors by Transplant Hospital	4
New Zealand Emotionally-Related Donors by Transplant Hospital	4
New Zealand Unrelated Donors by Transplant Hospital	4
New Zealand Donors in the Australian and New Zealand Paired Kidney Exchange Program (ANZKX) by Transplant Hospital	5
Transplant Recipients from New Zealand Living Kidney Donors	5
Recipients from New Zealand Donors by Transplant Hospital	5
Recipients from New Zealand Donors by Referring Hospital	5

Explanatory Notes

Definitions

Donor – A human being, living or deceased, who is a source of cells, tissues or organs for the purpose of transplantation.

Living Kidney Donor – A living human being from whom a kidney has been removed for the purpose of transplantation.

A Living Kidney Donor has one of the following three possible relationships with the recipient:

1. Related:

(a) Genetically Related:

- i. 1st Degree Genetic Relative: Parent, Sibling, Offspring
- ii. 2nd Degree genetic relative, e.g. grandparent, grandchild, aunt, uncle, niece, nephew
- iii. Other than 1st or 2nd degree genetically related, for example cousin

(b) Emotionally Related: Spouse (if not genetically related); in-laws; Adopted; Friend

2. Unrelated = Non Related: Not Genetically or Emotionally Related

Australian and New Zealand Paired Kidney Exchange Program (ANZKX) – This program matches incompatible kidney donors with recipient pairs with other incompatible pairs across Australia and New Zealand.

Paired Kidney Exchange Donor – A living kidney donor whom is identified as a match for patients who are eligible for a kidney transplant, and have a living donor who is willing but unable to donate because of an incompatible blood type or tissue type. This donor is willing to donate their kidney to another person.

Recipient – A consented eligible person into whom organs, retrieved for the purpose of transplantation, are received.

Transplantation – The transfer of organs or tissue from donor to recipient with the aim of restoring body function(s) of the recipient.

Notes

For the purpose of this report data representing Living Kidney Donors are defined in the definition outlined above.

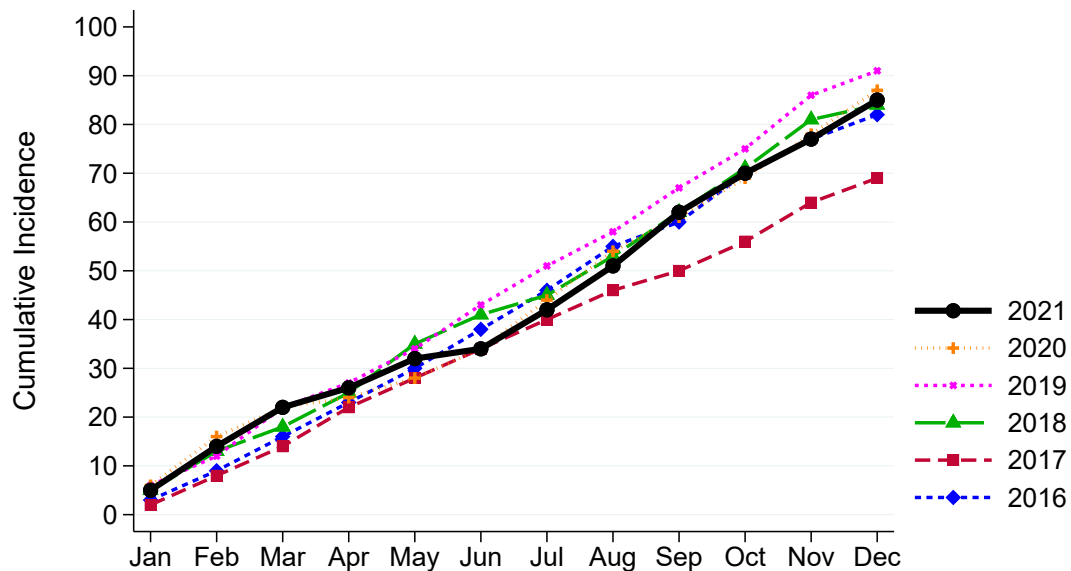
All tables are presented by transplanting hospital, unless otherwise specified.

This report supercedes previous monthly report and as data reported is subject to revision it may change in subsequent reporting.

Summary of New Zealand Living Kidney Donation

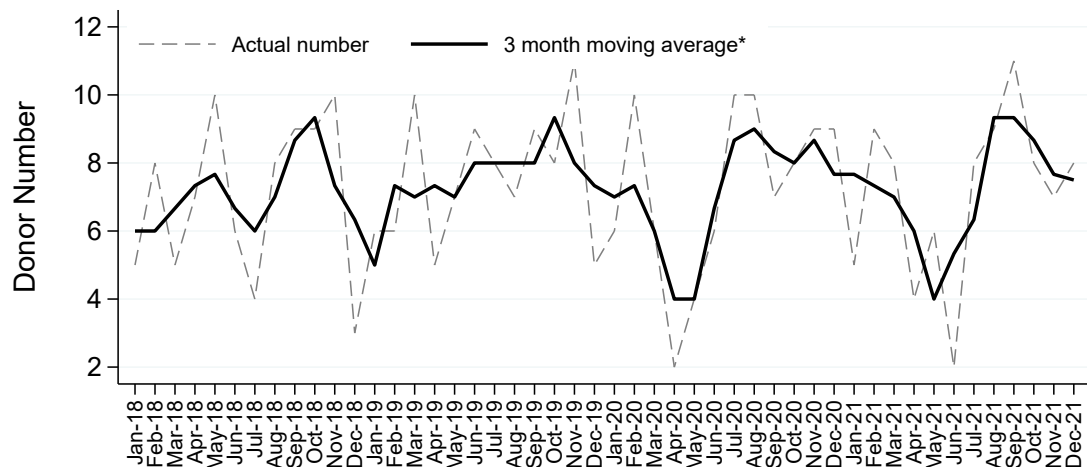
Living Kidney Donors per Month

New Zealand



Living Kidney Donors per Month

New Zealand



*The average is calculated from the number of living kidney donors in the current month, previous month and next month; except for the most recent month which is calculated from the previous and current months.

Total New Zealand Living Kidney Donors by Transplant Hospital

	Jan	Feb	Mar	Apr	May	Jun	Jul	Aug	Sep	Oct	Nov	Dec	Total	DPMP
Auckland Hospital	3	4	5	3	2	0	4	6	5	5	4	3	44	.
Christchurch Hospital	1	3	3	1	2	1	2	2	3	1	2	4	25	.
Wellington Hospital	1	2	0	0	2	1	2	1	3	2	1	1	16	.
Australian Hospital*	0	0	0	0	0	0	0	0	0	0	0	0	0	.
TOTAL	5	9	8	4	6	2	8	9	11	8	7	8	85	16.4

New Zealand Genetically-Related Donors by Transplant Hospital

Genetically-related donors includes all degrees of genetically related donors such as siblings, parents, children etc.

	Jan	Feb	Mar	Apr	May	Jun	Jul	Aug	Sep	Oct	Nov	Dec	Total
Auckland Hospital	3	2	2	0	0	0	1	1	1	3	4	2	19
Christchurch Hospital	0	1	2	1	2	1	2	1	0	1	0	3	14
Wellington Hospital	0	1	0	0	1	1	1	0	1	2	1	1	9
Australian Hospital*	0	0	0	0	0	0	0	0	0	0	0	0	0
TOTAL	3	4	4	1	3	2	4	2	2	6	5	6	42

New Zealand Emotionally-Related Donors by Transplant Hospital

Emotionally-related donors includes donors who have an emotional or social attachment to the recipient, but are not genetically related. This includes spouses and friends.

	Jan	Feb	Mar	Apr	May	Jun	Jul	Aug	Sep	Oct	Nov	Dec	Total
Auckland Hospital	0	1	3	3	2	0	3	1	0	0	0	0	13
Christchurch Hospital	1	1	1	0	0	0	0	1	1	0	2	1	8
Wellington Hospital	0	1	0	0	1	0	1	1	2	0	0	0	6
Australian Hospital*	0	0	0	0	0	0	0	0	0	0	0	0	0
TOTAL	1	3	4	3	3	0	4	3	3	0	2	1	27

New Zealand Unrelated Donors by Transplant Hospital

Donors for the Australian and New Zealand Paired Kidney Exchange Program (ANZKX) are included in this table.

	Jan	Feb	Mar	Apr	May	Jun	Jul	Aug	Sep	Oct	Nov	Dec	Total
Auckland Hospital	0	1	0	0	0	0	0	4	4	2	0	1	12
Christchurch Hospital	0	1	0	0	0	0	0	0	2	0	0	0	3
Wellington Hospital	1	0	0	0	0	0	0	0	0	0	0	0	1
Australian Hospital*	0	0	0	0	0	0	0	0	0	0	0	0	0
TOTAL	1	2	0	0	0	0	0	4	6	2	0	1	16

*Donation at a New Zealand hospital to an Australian recipient as part of the Australian and New Zealand Paired Kidney Exchange Program.

New Zealand Donors in the Australian and New Zealand Paired Kidney Exchange Program (ANZKX) by Transplant Hospital

Donors for the ANZKX Program are included in the unrelated donor numbers above.

	Jan	Feb	Mar	Apr	May	Jun	Jul	Aug	Sep	Oct	Nov	Dec	Total
Auckland Hospital	0	1	0	0	0	0	0	3	3	2	0	0	9
Christchurch Hospital	0	1	0	0	0	0	0	0	1	0	0	0	2
Wellington Hospital	1	0	0	0	0	0	0	0	0	0	0	0	1
Australian Hospital*	0	0	0	0	0	0	0	0	0	0	0	0	0
TOTAL	1	2	0	0	0	0	0	3	4	2	0	0	12

Transplant Recipients from New Zealand Living Kidney Donors

Recipients from New Zealand Donors by Transplant Hospital

	Jan	Feb	Mar	Apr	May	Jun	Jul	Aug	Sep	Oct	Nov	Dec	Total
Auckland Hospital	3	4	5	3	2	0	4	6	5	5	4	3	44
Christchurch Hospital	1	3	3	1	2	1	2	2	3	1	2	4	25
Wellington Hospital	1	2	0	0	2	1	2	1	3	2	1	1	16
Australian Hospital*	0	0	0	0	0	0	0	0	0	0	0	0	0
TOTAL	5	9	8	4	6	2	8	9	11	8	7	8	85

Recipients from New Zealand Donors by Referring Hospital

	Jan	Feb	Mar	Apr	May	Jun	Jul	Aug	Sep	Oct	Nov	Dec	Total
Auckland Hospital	0	1	0	1	0	0	0	1	2	1	1	2	9
Christchurch Hospital	1	2	3	1	1	1	1	2	3	1	2	4	22
Dunedin Hospital	0	1	0	0	1	0	1	0	0	0	0	0	3
Hawkes Bay Hospital	0	0	0	0	0	0	0	1	0	0	0	1	2
Middlemore Hospital	0	1	2	0	0	0	1	2	1	0	0	0	7
Palmerston Hospital	1	0	0	0	0	0	0	0	1	0	1	0	3
Starship Children's Hospital	0	0	1	0	0	0	0	0	1	0	0	0	2
Taranaki Hospital	0	0	0	0	0	0	0	0	0	0	0	0	0
Wellington Hospital	1	2	0	0	2	1	2	1	2	2	0	0	13
Whangarei Hospital	0	0	0	0	1	0	0	0	0	0	0	1	2
Waikato Hospital Hamilton	2	2	2	1	0	0	3	0	0	2	3	0	15
Waitemata Renal Service	0	0	0	1	1	0	0	2	1	2	0	0	7
Australian Hospital*	0	0	0	0	0	0	0	0	0	0	0	0	0
TOTAL	5	9	8	4	6	2	8	9	11	8	7	8	85

*Donation at a New Zealand hospital to an Australian recipient as part of the Australian and New Zealand Paired Kidney Exchange Program.