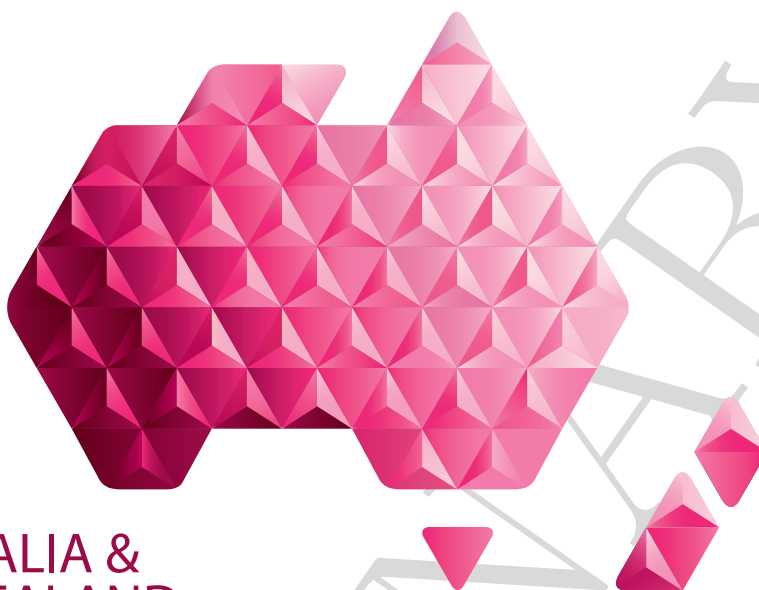


**ANZ  
DATA**



**AUSTRALIA &  
NEW ZEALAND**

LIVING KIDNEY DONATION  
REGISTRY

# Monthly Report on Living Kidney Donation in Australia

## December 2020

Produced 21 January 2021 1:28 PM  
Data Received by ANZDATA up to 20 January 2021

## Contents

<b>Explanatory Notes</b>	<b>2</b>
Definitions . . . . .	2
Notes . . . . .	2
<b>Summary of Australian Living Kidney Donation</b>	<b>3</b>
Total Australian Living Kidney Donors by Donor Jurisdiction . . . . .	4
Australian Genetically-Related Donors by Donor Jurisdiction . . . . .	4
Australian Emotionally-Related Donors by Donor Jurisdiction . . . . .	4
Australian Unrelated Donors by Donor Jurisdiction . . . . .	5
Australian Donors in the Australian and New Zealand Paired Kidney Exchange Program (ANZKX) by Donor Jurisdiction . . . . .	5
<b>Transplant Recipients from Australian Living Kidney Donors</b>	<b>6</b>
Recipients from Australian Donors by Jurisdiction of Donation . . . . .	6
Recipients from Australian Donors by Jurisdiction of Transplantation . . . . .	6
<b>Transplanting Hospitals for Australian Donors reporting in 2020</b>	<b>7</b>

PRELIMINARY

## Explanatory Notes

### Definitions

Donor – A human being, living or deceased, who is a source of cells, tissues or organs for the purpose of transplantation.

Living Kidney Donor – A living human being from whom a kidney has been removed for the purpose of transplantation.

A Living Kidney Donor has one of the following three possible relationships with the recipient:

1. Related:

(a) Genetically Related:

- i. 1st Degree Genetic Relative: Parent, Sibling, Offspring
- ii. 2nd Degree genetic relative, e.g. grandparent, grandchild, aunt, uncle, niece, nephew
- iii. Other than 1st or 2nd degree genetically related, for example cousin

(b) Emotionally Related: Spouse (if not genetically related); in-laws; Adopted; Friend

2. Unrelated = Non Related: Not Genetically or Emotionally Related

Australian and New Zealand Paired Kidney Exchange Program (ANZKX) – This program matches incompatible kidney donors with recipient pairs with other incompatible pairs across Australia and New Zealand.

Paired Kidney Exchange Donor – A living kidney donor whom is identified as a match for patients who are eligible for a kidney transplant, and have a living donor who is willing but unable to donate because of an incompatible blood type or tissue type. This donor is willing to donate their kidney to another person.

Recipient – A consented eligible person into whom organs, retrieved for the purpose of transplantation, are received.

Transplantation – The transfer of organs or tissue from donor to recipient with the aim of restoring body function(s) of the recipient.

### Notes

For the purpose of this report data representing Living Kidney Donors are defined in the definition outlined above.

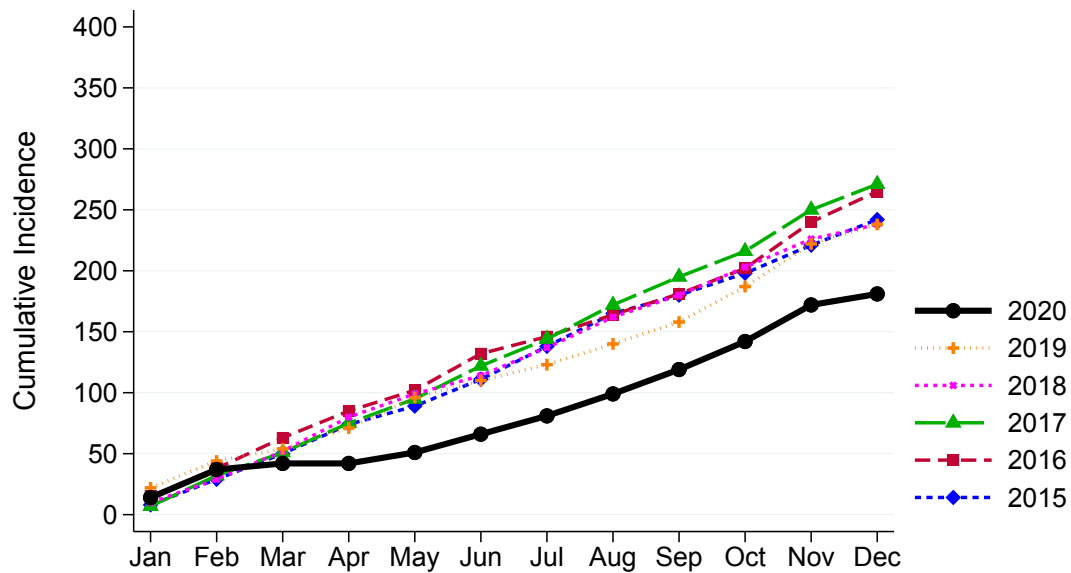
All tables are presented by state/territory of donation, unless otherwise specified.

This report supercedes previous monthly report and as data reported is subject to revision it may change in subsequent reporting.

## Summary of Australian Living Kidney Donation

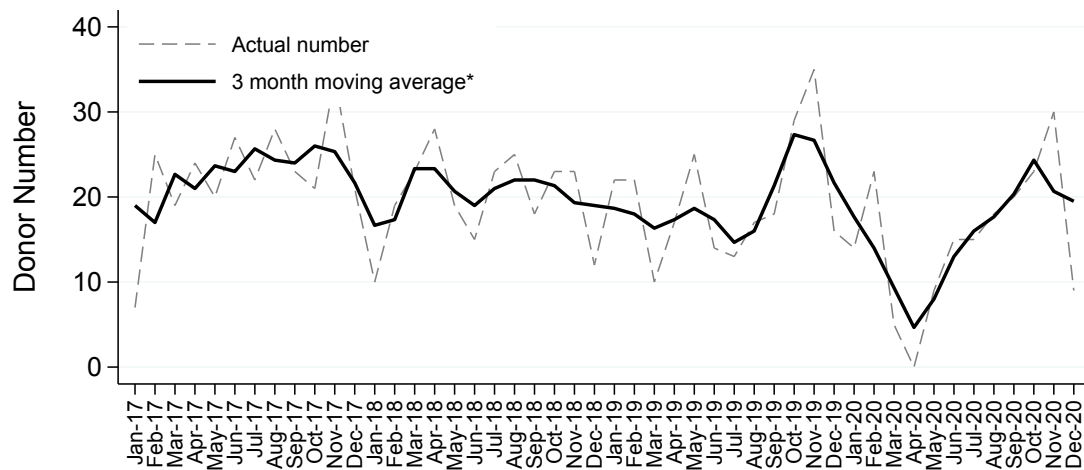
### Living Kidney Donors per Month

Australia



### Living Kidney Donors per Month

Australia



\*The average is calculated from the number of living kidney donors in the current month, previous month and next month; except for the most recent month which is calculated from the previous and current months.

## Total Australian Living Kidney Donors by Donor Jurisdiction

	Jan	Feb	Mar	Apr	May	Jun	Jul	Aug	Sep	Oct	Nov	Dec	Total	DPMP <sup>*(1)</sup>
NSW	3	12	1	0	3	6	7	7	8	9	11	5	<b>72</b>	9.1
VIC	8	6	3	0	1	6	3	3	4	8	12	2	<b>56</b>	8.4
QLD	1	2	1	0	0	1	2	3	3	1	2	0	<b>16</b>	3.1
SA	1	1	0	0	2	0	3	4	2	3	4	0	<b>20</b>	11.3
WA	1	2	0	0	3	2	0	1	3	2	1	2	<b>17</b>	6.4
TAS	0	0	0	0	0	0	0	0	0	0	0	0	<b>0</b>	0.0
NT	0	0	0	0	0	0	0	0	0	0	0	0	<b>0</b>	0.0
ACT	0	0	0	0	0	0	0	0	0	0	0	0	<b>0</b>	0.0
<b>AUSTRALIA</b>	<b>14</b>	<b>23</b>	<b>5</b>	<b>0</b>	<b>9</b>	<b>15</b>	<b>15</b>	<b>18</b>	<b>20</b>	<b>23</b>	<b>30</b>	<b>9</b>	<b>181</b>	<b>7.0</b>

\* Donors per million population

Based on the estimate resident population at June 2020 3101.0 Australian Demographic Statistics (Australian Bureau of Statistics) released December 2020

<sup>(1)</sup> NSW population excludes residents of Southern Area Health Service (included in ACT population)

## Australian Genetically-Related Donors by Donor Jurisdiction

Genetically-related donors includes all degrees of genetically related donors such as siblings, parents, children etc.

	Jan	Feb	Mar	Apr	May	Jun	Jul	Aug	Sep	Oct	Nov	Dec	Total
NSW	0	5	0	0	2	6	6	3	3	6	3	4	<b>38</b>
VIC	2	1	3	0	1	4	2	2	3	3	3	2	<b>26</b>
QLD	0	0	1	0	0	1	2	3	1	0	0	0	<b>8</b>
SA	1	1	0	0	2	0	1	1	1	1	3	0	<b>11</b>
WA	0	0	0	0	1	2	0	0	2	1	0	1	<b>7</b>
TAS	0	0	0	0	0	0	0	0	0	0	0	0	<b>0</b>
NT	0	0	0	0	0	0	0	0	0	0	0	0	<b>0</b>
ACT	0	0	0	0	0	0	0	0	0	0	0	0	<b>0</b>
<b>AUSTRALIA</b>	<b>3</b>	<b>7</b>	<b>4</b>	<b>0</b>	<b>6</b>	<b>13</b>	<b>11</b>	<b>9</b>	<b>10</b>	<b>11</b>	<b>9</b>	<b>7</b>	<b>90</b>

## Australian Emotionally-Related Donors by Donor Jurisdiction

Emotionally-related donors includes donors who have an emotional or social attachment to the recipient, but are not genetically related. This includes spouses and friends. Donors for the Australian and New Zealand Paired Kidney Exchange Program are also unrelated genetically, but are listed separately.

	Jan	Feb	Mar	Apr	May	Jun	Jul	Aug	Sep	Oct	Nov	Dec	Total
NSW	3	6	1	0	1	0	1	4	3	3	4	1	<b>27</b>
VIC	1	3	0	0	0	2	1	1	0	2	3	0	<b>13</b>
QLD	0	2	0	0	0	0	0	0	1	1	2	0	<b>6</b>
SA	0	0	0	0	0	0	2	2	1	1	0	0	<b>6</b>
WA	1	1	0	0	2	0	0	1	1	0	0	1	<b>7</b>
TAS	0	0	0	0	0	0	0	0	0	0	0	0	<b>0</b>
NT	0	0	0	0	0	0	0	0	0	0	0	0	<b>0</b>
ACT	0	0	0	0	0	0	0	0	0	0	0	0	<b>0</b>
<b>AUSTRALIA</b>	<b>5</b>	<b>12</b>	<b>1</b>	<b>0</b>	<b>3</b>	<b>2</b>	<b>4</b>	<b>8</b>	<b>6</b>	<b>7</b>	<b>9</b>	<b>2</b>	<b>59</b>

### Australian Unrelated Donors by Donor Jurisdiction

	Jan	Feb	Mar	Apr	May	Jun	Jul	Aug	Sep	Oct	Nov	Dec	Total
NSW	0	1	0	0	0	0	0	0	2	0	4	0	<b>7</b>
VIC	5	2	0	0	0	0	0	0	1	3	6	0	<b>17</b>
QLD	1	0	0	0	0	0	0	0	1	0	0	0	<b>2</b>
SA	0	0	0	0	0	0	0	1	0	1	1	0	<b>3</b>
WA	0	1	0	0	0	0	0	0	0	1	1	0	<b>3</b>
TAS	0	0	0	0	0	0	0	0	0	0	0	0	<b>0</b>
NT	0	0	0	0	0	0	0	0	0	0	0	0	<b>0</b>
ACT	0	0	0	0	0	0	0	0	0	0	0	0	<b>0</b>
<b>AUSTRALIA</b>	<b>6</b>	<b>4</b>	<b>0</b>	<b>0</b>	<b>0</b>	<b>0</b>	<b>0</b>	<b>1</b>	<b>4</b>	<b>5</b>	<b>12</b>	<b>0</b>	<b>32</b>

### Australian Donors in the Australian and New Zealand Paired Kidney Exchange Program (ANZKX) by Donor Jurisdiction

Donors for the ANZKX Program are included in the unrelated donor numbers above.

	Jan	Feb	Mar	Apr	May	Jun	Jul	Aug	Sep	Oct	Nov	Dec	Total
NSW	0	1	0	0	0	0	0	0	2	0	4	0	<b>7</b>
VIC	5	2	0	0	0	0	0	0	1	3	6	0	<b>17</b>
QLD	1	0	0	0	0	0	0	0	0	0	0	0	<b>1</b>
SA	0	0	0	0	0	0	0	0	0	1	1	0	<b>2</b>
WA	0	1	0	0	0	0	0	0	0	0	1	0	<b>2</b>
TAS	0	0	0	0	0	0	0	0	0	0	0	0	<b>0</b>
NT	0	0	0	0	0	0	0	0	0	0	0	0	<b>0</b>
ACT	0	0	0	0	0	0	0	0	0	0	0	0	<b>0</b>
<b>AUSTRALIA</b>	<b>6</b>	<b>4</b>	<b>0</b>	<b>0</b>	<b>0</b>	<b>0</b>	<b>0</b>	<b>0</b>	<b>3</b>	<b>4</b>	<b>12</b>	<b>0</b>	<b>29</b>

## Transplant Recipients from Australian Living Kidney Donors

### Recipients from Australian Donors by Jurisdiction of Donation

	Jan	Feb	Mar	Apr	May	Jun	Jul	Aug	Sep	Oct	Nov	Dec	Total
NSW	3	12	1	0	3	6	7	7	8	9	11	5	<b>72</b>
VIC	8	6	3	0	1	6	3	3	4	8	12	2	<b>56</b>
QLD	1	2	1	0	0	1	2	3	3	1	2	0	<b>16</b>
SA	1	1	0	0	2	0	3	4	2	3	4	0	<b>20</b>
WA	1	2	0	0	3	2	0	1	3	2	1	2	<b>17</b>
TAS	0	0	0	0	0	0	0	0	0	0	0	0	<b>0</b>
NT	0	0	0	0	0	0	0	0	0	0	0	0	<b>0</b>
ACT	0	0	0	0	0	0	0	0	0	0	0	0	<b>0</b>
<b>AUSTRALIA</b>	<b>14</b>	<b>23</b>	<b>5</b>	<b>0</b>	<b>9</b>	<b>15</b>	<b>15</b>	<b>18</b>	<b>20</b>	<b>23</b>	<b>30</b>	<b>9</b>	<b>181</b>

### Recipients from Australian Donors by Jurisdiction of Transplantation

	Jan	Feb	Mar	Apr	May	Jun	Jul	Aug	Sep	Oct	Nov	Dec	Total
NSW	4	12	1	0	3	6	7	7	8	9	11	5	<b>73</b>
VIC	6	5	3	0	1	6	3	3	4	8	12	2	<b>53</b>
QLD	1	2	1	0	0	1	2	3	3	1	2	0	<b>16</b>
SA	1	1	0	0	2	0	3	4	2	3	4	0	<b>20</b>
WA	1	2	0	0	3	2	0	1	3	2	1	2	<b>17</b>
TAS	0	0	0	0	0	0	0	0	0	0	0	0	<b>0</b>
NT	0	0	0	0	0	0	0	0	0	0	0	0	<b>0</b>
ACT	0	0	0	0	0	0	0	0	0	0	0	0	<b>0</b>
<b>AUSTRALIA</b>	<b>13</b>	<b>22</b>	<b>5</b>	<b>0</b>	<b>9</b>	<b>15</b>	<b>15</b>	<b>18</b>	<b>20</b>	<b>23</b>	<b>30</b>	<b>9</b>	<b>179</b>
<b>NEW ZEALAND</b>	<b>1</b>	<b>1</b>	<b>0</b>	<b>0</b>	<b>0</b>	<b>0</b>	<b>0</b>	<b>0</b>	<b>0</b>	<b>0</b>	<b>0</b>	<b>0</b>	<b>2</b>

## Transplanting Hospitals for Australian Donors reporting in 2020

Transplanting Hospital	Jurisdiction
JOHN HUNTER HOSPITAL	NSW
ROYAL NORTH SHORE HOSPITAL	NSW
ST VINCENT'S HOSPITAL SYDNEY	NSW
STATEWIDE RENAL SERVICES	NSW
SYDNEY CHILDREN'S HOSPITAL	NSW
THE CHILDREN'S HOSPITAL AT WESTMEAD	NSW
THE PRINCE OF WALES HOSPITAL	NSW
WESTMEAD HOSPITAL	NSW
ALFRED HOSPITAL	VIC
AUSTIN HOSPITAL	VIC
MONASH MEDICAL CENTRE	VIC
ROYAL CHILDREN'S HOSPITAL	VIC
ST VINCENT'S HOSPITAL MELBOURNE	VIC
THE ROYAL MELBOURNE HOSPITAL	VIC
QUEENSLAND KIDNEY TRANSPLANT SERVICE	QLD
CENTRAL NORTHERN ADELAIDE RENAL SERVICE	SA
WOMEN'S AND CHILDREN'S HOSPITAL	SA
FIONA STANLEY HOSPITAL	WA
SIR CHARLES GAIRDNER HOSPITAL	WA
NEW ZEALAND HOSPITAL	NZ