



# Monthly Report on Deceased Organ Donation in Australia

**March 2020**

Produced 14 April 2020 9:34 AM  
Data Received by ANZOD up to 13 April 2020

## Contents

<b>Explanatory notes</b>	<b>2</b>
Definitions . . . . .	2
Notes . . . . .	2
Method . . . . .	3
References . . . . .	3
<b>Deceased Organ Donation</b>	<b>4</b>
Total Actual Deceased Organ Donors . . . . .	6
Multiorgan Deceased Donors . . . . .	6
Intended Deceased Organ Donors . . . . .	6
<b>Transplant Recipients from Deceased Organ Donors</b>	<b>7</b>
Total Transplant Recipients from Deceased Organ Donors . . . . .	9
Mean Transplant Recipients Per Actual Deceased Organ Donor . . . . .	9
Recipients of Multiple Organs . . . . .	9
<b>Organs Transplanted from Deceased Organ Donors</b>	<b>10</b>
Total Organs Transplanted . . . . .	12
Mean Organs Transplanted Per Actual Deceased Organ Donor . . . . .	12
<b>Organs Transplanted by Organ Type</b>	<b>13</b>
<b>Transplantation of Organs from Deceased Organ Donors</b>	<b>16</b>
Total Transplantation Procedures . . . . .	16
Mean Transplantation Procedures . . . . .	16
Multiorgan Transplantation . . . . .	16
<b>Transplantation by Organ Type</b>	<b>17</b>
<b>Activity Summary: Donation Following Circulatory Death</b>	<b>26</b>
Actual Organ Donors following Circulatory Death . . . . .	26
Transplant Recipients from Donors following Circulatory Death . . . . .	26
Organs Transplanted from Donors following Circulatory Death . . . . .	26
Organs Transplanted by Organ Type from Donors following Circulatory Death . . . . .	27
Transplantation of Organs from Donors following Circulatory Death . . . . .	29
Transplantation by Organ Type from Donors following Circulatory Death . . . . .	29

## Explanatory notes

### Definitions

- 1 Actual Deceased Organ Donor – A person for whom the organ retrieval procedure commenced in the operating room (with surgical incision) for the purpose of transplantation. This includes donors who may have been deemed medically unsuitable during surgery or after the removal of organs.<sup>1,2,3,4</sup>
- 2 Donation after Circulatory Death (DCD) – Donation, for the purpose of transplantation, occurs following death of a person resulting from the irreversible cessation of circulatory and respiratory function.<sup>4</sup>
- 3 Intended Deceased Organ Donor – A person for whom the donation workup was initiated as evidenced by both:
  - Formal written consent undertaken, including consent for donation of specific organs and/or tissues, and
  - Blood for tissue typing sent with allocation of a donor ID;
 but donation did not proceed.<sup>5</sup>
- 4 Multiorgan Donor – An actual deceased organ donor from whom at least two different types of organs have been retrieved for the purpose of transplantation.<sup>4</sup>
- 5 Recipient – An individual into whom allogeneic human cells, tissues or organs were transplanted.<sup>4</sup>
- 6 Recipient of Multiple Organs – A transplant recipient where two or more different types of organs have been utilised for transplantation in the same operative procedure. This excludes double adult kidney, en bloc kidney and double lung transplants. A single recipient can receive multiple organs in a single transplantation event.
- 7 Retrieval – The procedure of removing organs or tissues from donor.<sup>4</sup>
- 8 Transplantation – The transfer of organs and/or tissue from donor to recipient with the aim of restoring body function(s) of the recipient.<sup>4</sup>
- 9 Counts pertain to solid organs only (Kidney, Liver, Heart, Lung, Pancreas and Stomach Intestines). Pancreatic Islets are reported as “tissue”.

### Notes

This report supersedes previous monthly reports and as data reported is subject to revision it may change in subsequent reporting.

All donation and transplantation data is presented by the state or territory of donation

Victorian activity includes those donors from Albury, NSW due to the proximity of Albury to DonateLife services in Victoria.

## Method

To assist with transparency of reporting, the counting method is detailed below.

In Australia, data is collected via the Electronic Donor Record (EDR) and is then submitted to the online ANZOD Registry application via an XML for data validation and analysis.

Monthly data presents the number of Actual and Intended organ donors (as per definitions 1 and 3 on page 2) for a calendar month.

The count of transplant recipients identifies the number of individuals who fall under definition 5 (page 2) for the reporting period.

The count of organs transplanted identifies the number of individual organs, regardless of the type of transplant performed.<sup>6,7,8</sup> Therefore, for reporting the number of organs transplanted, double lungs and double adult/en bloc kidneys have an organ count of two. A liver split into two segments and each transplanted into two recipients is counted as one organ transplanted.

In comparison, reporting of transplantation of organs represents the number of transplant procedures where one or more organs are transplanted during a single event.<sup>9,10,11</sup> For reporting of double lungs and double adult/en bloc kidneys the transplantation count is one.

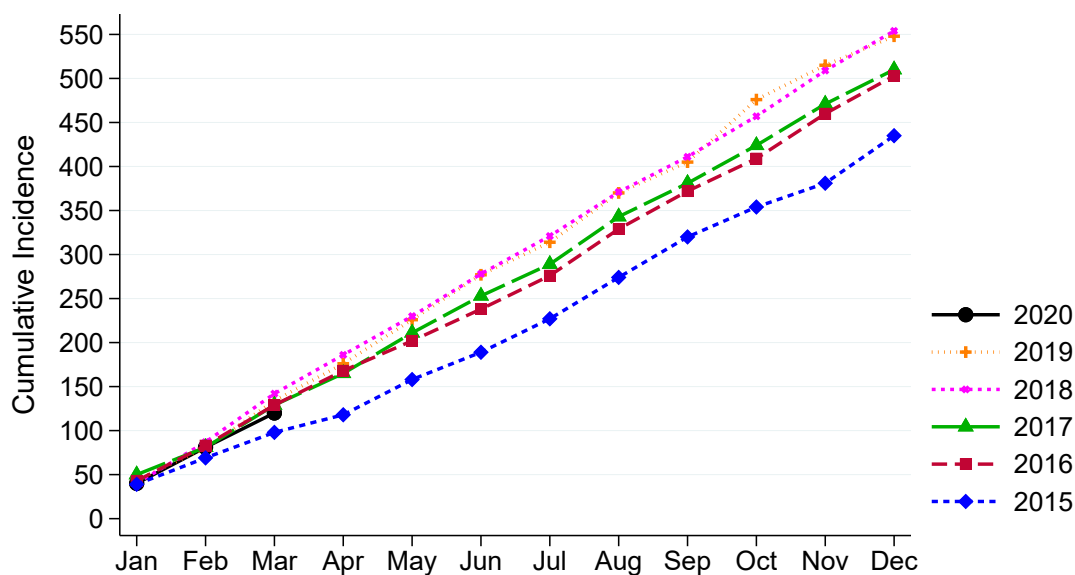
## References

- 1 B.Dominguez-Hill et. al., The critical pathway for deceased donation: reportable uniformity in the approach to deceased donation (2011). Transplant International; 373-378.
- 2 ODEQUS Quality Criteria & Quality Indicators in Organ Donation (2013). Available at: [http://www.odequs.eu/pdf/ODEQUS\\_Quality\\_Criteria-Indicators.pdf](http://www.odequs.eu/pdf/ODEQUS_Quality_Criteria-Indicators.pdf)
- 3 Variation in Organ Donation Rates in Switzerland: Prospective Cohort Study of Potential Donors (SwissPOD) 2012. Available at: <https://www.swisstransplant.org/14/organ-donation-transplantation-allocation-coordination-wait-list-statistics.php?dl=1&datei=SwissPOD-StudyReport-English.pdf>
- 4 Organ Donation and Transplantation: Striving to Achieve Self-Sufficiency. Third Global WHO Consultation. Madrid (2010). Available at: [http://www.transplant-observatory.org/SiteCollectionDocuments/glorepthirdwhoglobalconsultation\\_part2.pdf](http://www.transplant-observatory.org/SiteCollectionDocuments/glorepthirdwhoglobalconsultation_part2.pdf)
- 5 Formal written letter, Yael Cass, Australian Organ and Tissue Authority, Intended donor definition, (2013).
- 6 B.Dominguez-Gil et. al. Current situation of donation after circulatory death in European Countries. Transplant International (2011) 676-686
- 7 Federal Regulations - Title 42: Public Health PART 486-CONDITIONS FOR COVERAGE OF SPECIALISED SERVICES FURNISHED BY SUPPLIERS Subpart G-Requirements for Certification and Designation and Conditions for Coverage: Organ Procurement Organizations
- 8 NHS Blood and Transplantation. Organ Donation and Transplantation Activity Report 2012/13
- 9 Newsletter Transplant of the Council of Europe Organ Transplantation Activity Definitions.
- 10 WHO International Counting Rules
- 11 International Registry in Organ Donation and Transplantation (IRODAT) Variable Definition (2013)

## Deceased Organ Donation

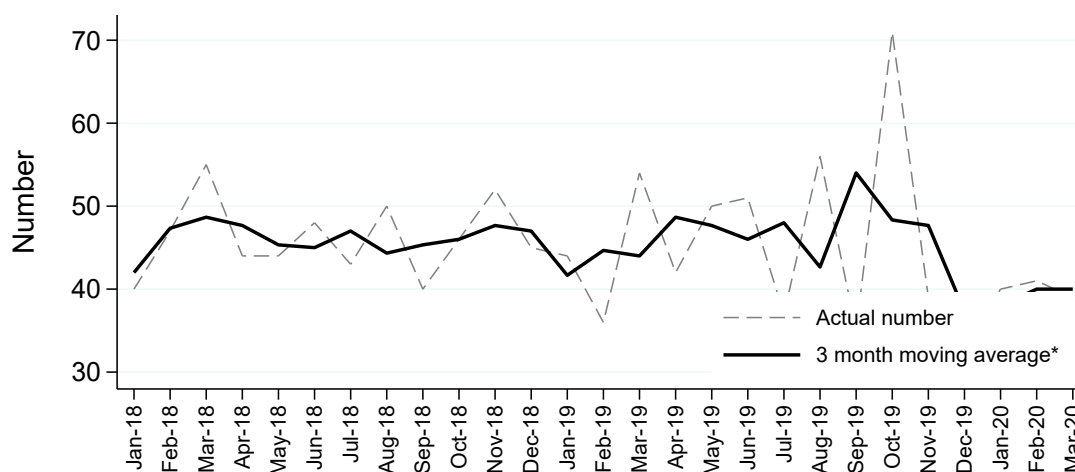
### Actual Deceased Organ Donors per Month

#### Australia



### Actual Deceased Organ Donors per Month

#### Australia

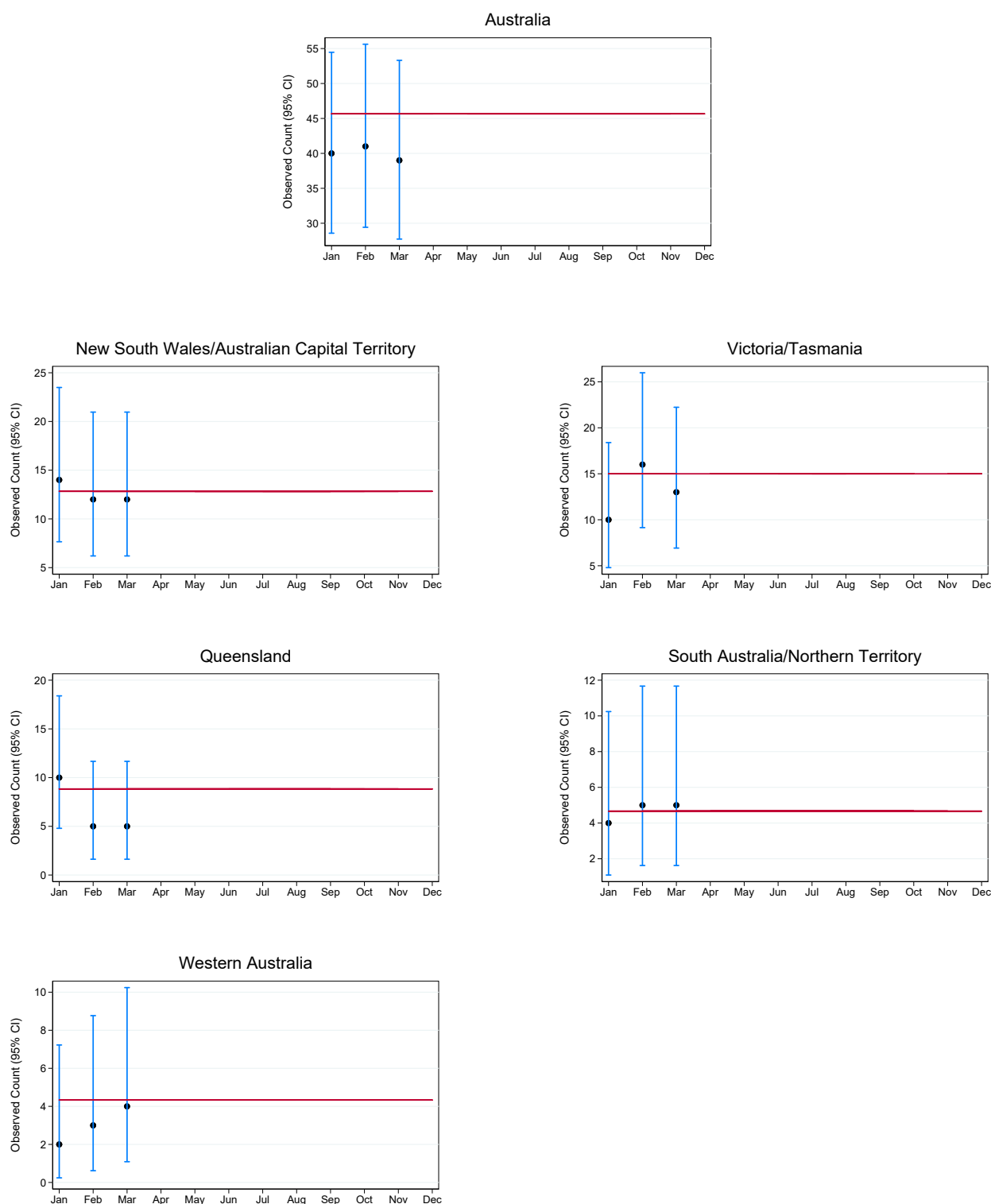


\*The average is calculated from the number of actual deceased donors in the current month, previous month and next month; except for the most recent month which is calculated from the previous and current months.

## Australia and New Zealand Organ Donation Registry

### Actual Deceased Organ Donors per Month and 95% Confidence Intervals by Jurisdiction , 2020

The plots below illustrate month-to-month variability in donor numbers. 95% confidence intervals are exact Poisson intervals. Reference line is the 2019 monthly average. Note the different y-axis scales for each jurisdiction.



## Australia and New Zealand Organ Donation Registry

### Total Actual Deceased Organ Donors

Actual deceased organ donors according to definition 1 on page 2.

	Jan	Feb	Mar	Apr	May	Jun	Jul	Aug	Sep	Oct	Nov	Dec	Total
NSW	14	10	12										36
VIC	9	11	13										33
QLD	10	5	5										20
SA	4	5	5										14
WA	2	3	4										9
TAS	1	5	0										6
NT	0	0	0										0
ACT	0	2	0										2
<b>AUSTRALIA</b>	<b>40</b>	<b>41</b>	<b>39</b>										<b>120</b>

### Multiorgan Deceased Donors

Multiorgan deceased donors according to definition 4 on page 2.

	Jan	Feb	Mar	Apr	May	Jun	Jul	Aug	Sep	Oct	Nov	Dec	Total
NSW	9	9	10										28
VIC	6	6	9										21
QLD	9	4	3										16
SA	4	4	3										11
WA	0	3	3										6
TAS	1	3	0										4
NT	0	0	0										0
ACT	0	2	0										2
<b>AUSTRALIA</b>	<b>29</b>	<b>31</b>	<b>28</b>	<b>0</b>	<b>0</b>	<b>0</b>	<b>0</b>	<b>0</b>	<b>0</b>	<b>0</b>	<b>0</b>	<b>0</b>	<b>88</b>

### Intended Deceased Organ Donors

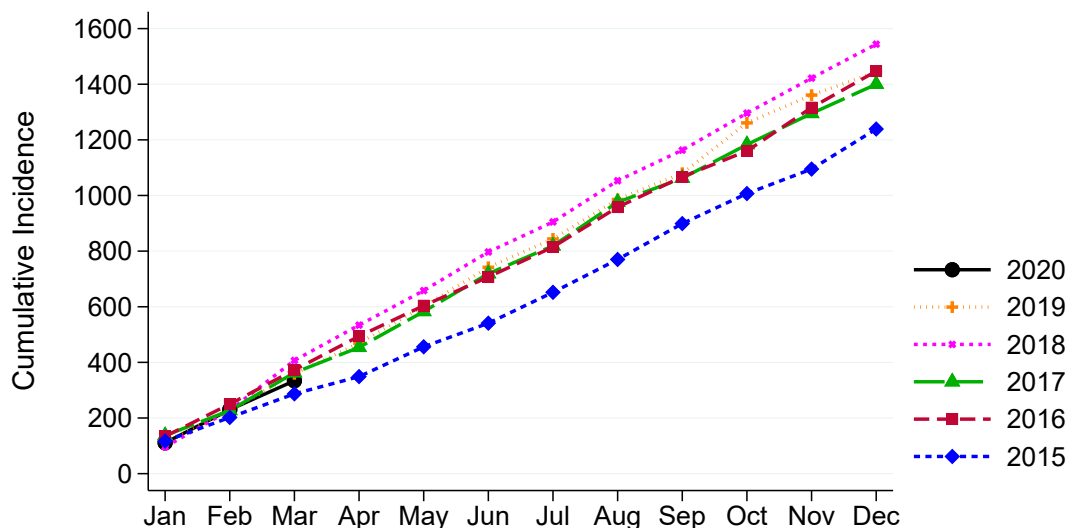
Intended deceased organ donors according to definition 3 on page 2.

	Jan	Feb	Mar	Apr	May	Jun	Jul	Aug	Sep	Oct	Nov	Dec	Total
NSW	3	1	2										6
VIC	8	4	6										18
QLD	3	3	4										10
SA	1	2	2										5
WA	0	2	0										2
TAS	0	0	0										0
NT	0	0	0										0
ACT	0	1	0										1
<b>AUSTRALIA</b>	<b>15</b>	<b>13</b>	<b>14</b>										<b>42</b>

## Transplant Recipients from Deceased Organ Donors

### Transplant Recipients per Month from Deceased Organ Donors

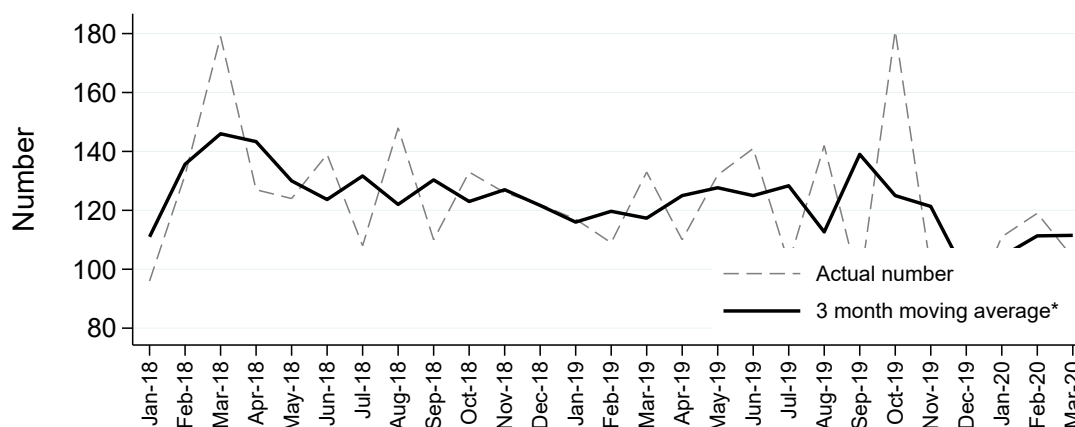
#### Australia



Recipients transplanted with one or more organs are counted as one.

### Transplant Recipients per Month from Deceased Organ Donors

#### Australia

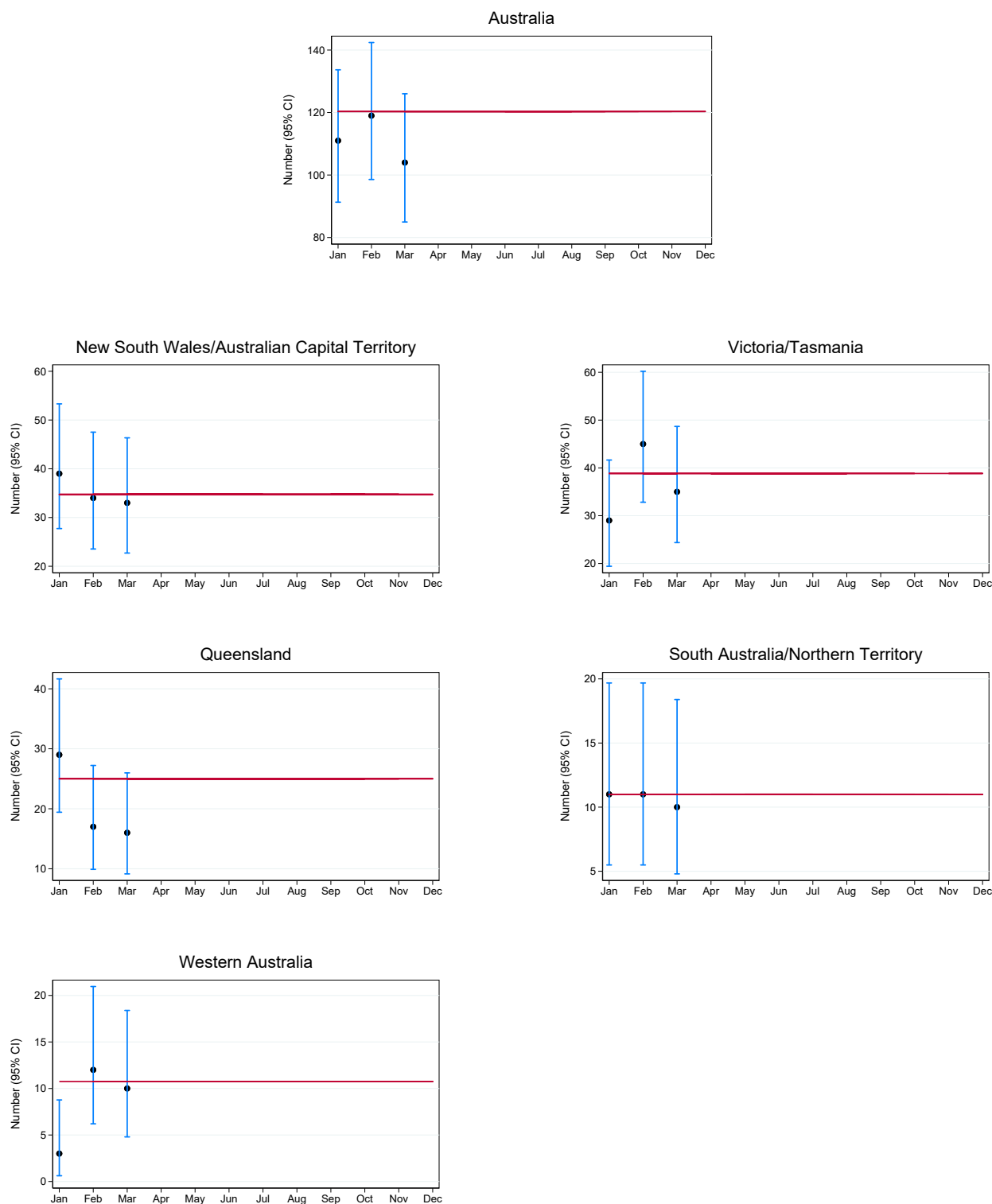


\*The average is calculated from the number of transplant recipients in the current month, previous month and next month; except for the most recent month which is calculated from the previous and current months.



## Total Transplant Recipients from Deceased Organ Donors per Month and 95% Confidence Intervals by Jurisdiction , 2020

The plots below illustrate month-to-month variability in the number of transplant recipients. 95% confidence intervals are exact Poisson intervals. Reference line is the 2019 monthly average. Note the different y-axis scales for each jurisdiction. Jurisdiction of donation is not related to state/territory of transplantation.



## Australia and New Zealand Organ Donation Registry

### Total Transplant Recipients from Deceased Organ Donors

	Jan	Feb	Mar	Apr	May	Jun	Jul	Aug	Sep	Oct	Nov	Dec	Total
NSW	39	29	33										101
VIC	25	30	35										90
QLD	29	17	16										62
SA	11	11	10										32
WA	3	12	10										25
TAS	4	15	0										19
NT	0	0	0										0
ACT	0	5	0										5
<b>AUSTRALIA</b>	<b>111</b>	<b>119</b>	<b>104</b>										<b>334</b>

Recipients transplanted with one or more organs are counted as one in the monthly totals.

### Mean Transplant Recipients Per Actual Deceased Organ Donor

	Jan	Feb	Mar	Apr	May	Jun	Jul	Aug	Sep	Oct	Nov	Dec	Total
NSW	2.8	2.9	2.8										2.8
VIC	2.8	2.7	2.7										2.7
QLD	2.9	3.4	3.2										3.1
SA	2.8	2.2	2.0										2.3
WA	1.5	4.0	2.5										2.8
TAS	4.0	3.0	0.0										3.2
NT	0.0	0.0	0.0										0.0
ACT	0.0	2.5	0.0										2.5
<b>AUSTRALIA</b>	<b>2.8</b>	<b>2.9</b>	<b>2.7</b>										<b>2.8</b>

Numerator = Total Recipients

Denominator = Total Actual Deceased Donors (definition 1 on page 2)

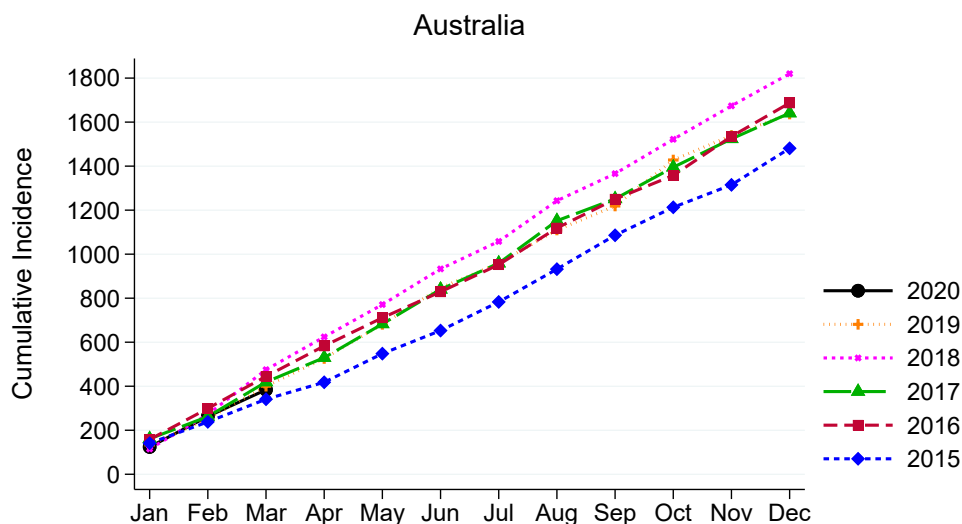
### Recipients of Multiple Organs

Recipients of multiple organs according to definition 6 on page 2.

	Jan	Feb	Mar	Apr	May	Jun	Jul	Aug	Sep	Oct	Nov	Dec	Total
NSW	0	2	2										4
VIC	0	1	1										2
QLD	0	0	0										0
SA	1	0	0										1
WA	0	1	0										1
TAS	0	2	0										2
NT	0	0	0										0
ACT	0	1	0										1
<b>AUSTRALIA</b>	<b>1</b>	<b>7</b>	<b>3</b>										<b>11</b>

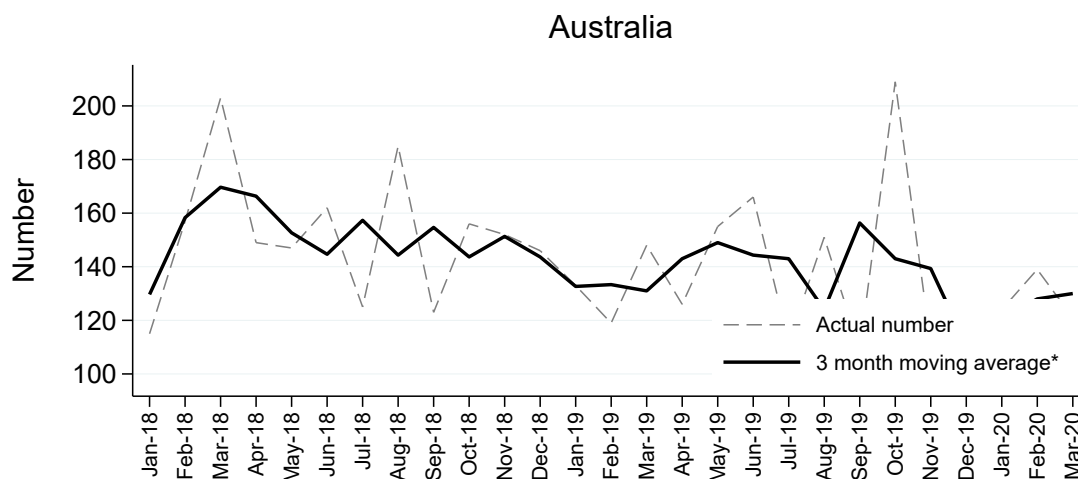
## Organs Transplanted from Deceased Organ Donors

### Organs Transplanted per Month from Deceased Organ Donors



Each organ is counted individually regardless of the type of transplantation performed.<sup>6,7,8</sup>

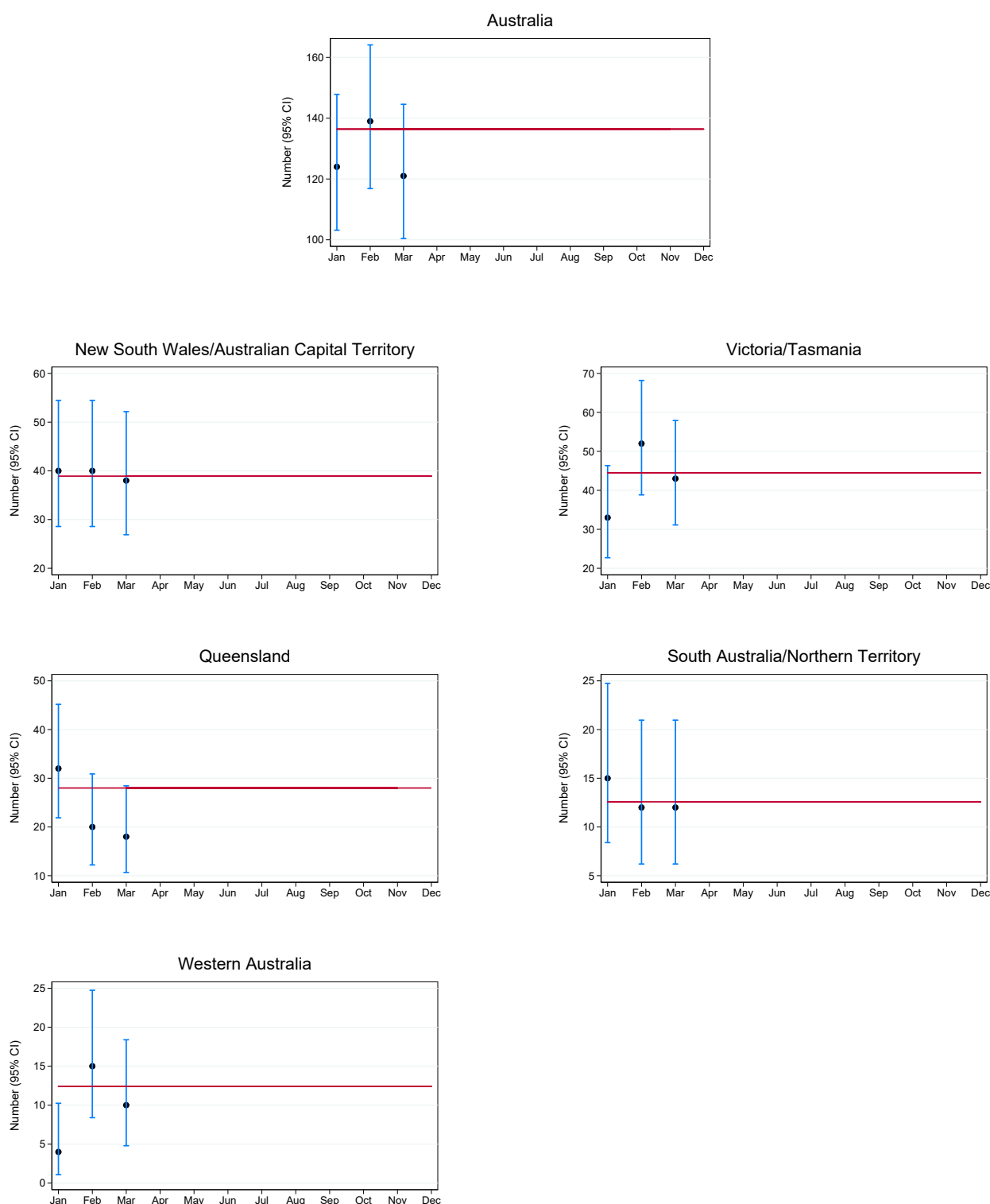
### Organs Transplanted per Month from Deceased Organ Donors



\*The average is calculated from the number of transplanted organs in the current month, previous month and next month; except for the most recent month which is calculated from the previous and current months.

## Total Organs Transplanted per Month and 95% Confidence Intervals by Jurisdiction , 2020

The plots below illustrate month-to-month variability in the number of organs transplanted. 95% confidence intervals are exact Poisson intervals. Reference line is the 2019 monthly average. Note the different y-axis scales for each jurisdiction. Jurisdiction of donation is not related to state/territory of transplantation.



## Australia and New Zealand Organ Donation Registry

### Total Organs Transplanted

	Jan	Feb	Mar	Apr	May	Jun	Jul	Aug	Sep	Oct	Nov	Dec	Total
NSW	40	34	38										112
VIC	28	34	43										105
QLD	32	20	18										70
SA	15	12	12										39
WA	4	15	10										29
TAS	5	18	0										23
NT	0	0	0										0
ACT	0	6	0										6
<b>AUSTRALIA</b>	<b>124</b>	<b>139</b>	<b>121</b>										<b>384</b>

Each organ is counted individually regardless of the type of transplant performed.<sup>6,7,8</sup>

### Mean Organs Transplanted Per Actual Deceased Organ Donor

	Jan	Feb	Mar	Apr	May	Jun	Jul	Aug	Sep	Oct	Nov	Dec	Total
NSW	2.9	3.4	3.2										3.1
VIC	3.1	3.1	3.3										3.2
QLD	3.2	4.0	3.6										3.5
SA	3.8	2.4	2.4										2.8
WA	2.0	5.0	2.5										3.2
TAS	5.0	3.6	0.0										3.8
NT	0.0	0.0	0.0										0.0
ACT	0.0	3.0	0.0										3.0
<b>AUSTRALIA</b>	<b>3.1</b>	<b>3.4</b>	<b>3.1</b>										<b>3.2</b>

Numerator = Total Organs

Denominator = Total Actual Donors (definition 1 on page 2)

## Organs Transplanted by Organ Type

The following monthly totals of organs represent the number of organs transplanted. Multiple transplants are counted under each of the organs. Tables showing the number of recipients of various combinations of multiple organ transplants are shown on page 16.

### Kidney

	Jan	Feb	Mar	Apr	May	Jun	Jul	Aug	Sep	Oct	Nov	Dec	Total
NSW	22	18	19										59
VIC	14	15	17										46
QLD	16	8	8										32
SA	5	6	8										19
WA	4	6	7										17
TAS	2	6	0										8
NT	0	0	0										0
ACT	0	4	0										4
<b>AUSTRALIA</b>	<b>63</b>	<b>63</b>	<b>59</b>										<b>185</b>

Single Kidney = 1 Organ Count

Double Kidney (Double adult/En bloc) = 2 Organ Counts

### Liver

	Jan	Feb	Mar	Apr	May	Jun	Jul	Aug	Sep	Oct	Nov	Dec	Total
NSW	8	6	5										19
VIC	5	6	6										17
QLD	6	4	4										14
SA	3	3	1										7
WA	0	2	2										4
TAS	1	4	0										5
NT	0	0	0										0
ACT	0	1	0										1
<b>AUSTRALIA</b>	<b>23</b>	<b>26</b>	<b>18</b>										<b>67</b>

Whole Liver = 1 Organ Count, even if the liver is later split or reduced in size for transplantation.

## Australia and New Zealand Organ Donation Registry

### Heart

	Jan	Feb	Mar	Apr	May	Jun	Jul	Aug	Sep	Oct	Nov	Dec	Total
NSW	4	2	4										10
VIC	3	5	4										12
QLD	5	2	2										9
SA	2	1	1										4
WA	0	2	1										3
TAS	0	1	0										1
NT	0	0	0										0
ACT	0	0	0										0
<b>AUSTRALIA</b>	<b>14</b>	<b>13</b>	<b>12</b>										<b>39</b>

Heart = 1 Organ Count, Heart + Other Organ = 1 Heart Count

### Lung

	Jan	Feb	Mar	Apr	May	Jun	Jul	Aug	Sep	Oct	Nov	Dec	Total
NSW	5	7	9										21
VIC	6	7	16										29
QLD	5	6	4										15
SA	4	2	2										8
WA	0	4	0										4
TAS	2	4	0										6
NT	0	0	0										0
ACT	0	0	0										0
<b>AUSTRALIA</b>	<b>22</b>	<b>30</b>	<b>31</b>										<b>83</b>

Single Lung = 1 Organ Count, Double Lung = 2 Organ Counts

### Pancreas

	Jan	Feb	Mar	Apr	May	Jun	Jul	Aug	Sep	Oct	Nov	Dec	Total
NSW	1	1	1										3
VIC	0	1	0										1
QLD	0	0	0										0
SA	1	0	0										1
WA	0	1	0										1
TAS	0	2	0										2
NT	0	0	0										0
ACT	0	1	0										1
<b>AUSTRALIA</b>	<b>2</b>	<b>6</b>	<b>1</b>										<b>9</b>

Whole Pancreas = 1 Organ Count

Pancreas used for pancreas islets transplantation is excluded from this count.

## Australia and New Zealand Organ Donation Registry

### Stomach Intestine

	Jan	Feb	Mar	Apr	May	Jun	Jul	Aug	Sep	Oct	Nov	Dec	Total
NSW	0	0	0										0
VIC	0	0	0										0
QLD	0	0	0										0
SA	0	0	0										0
WA	0	0	0										0
TAS	0	1	0										1
NT	0	0	0										0
ACT	0	0	0										0
<b>AUSTRALIA</b>	<b>0</b>	<b>1</b>	<b>0</b>										<b>1</b>

Stomach Intestine = 1 Organ Count

Stomach Intestine + Other Organ = 1 Organ Count



## Transplantation of Organs from Deceased Organ Donors

### Total Transplantation Procedures

	Jan	Feb	Mar	Apr	May	Jun	Jul	Aug	Sep	Oct	Nov	Dec	Total
NSW	39	31	35										105
VIC	25	31	36										92
QLD	29	17	16										62
SA	12	11	10										33
WA	3	13	10										26
TAS	4	17	0										21
NT	0	0	0										0
ACT	0	6	0										6
<b>AUSTRALIA</b>	<b>112</b>	<b>126</b>	<b>107</b>										<b>345</b>

### Mean Transplantation Procedures

	Jan	Feb	Mar	Apr	May	Jun	Jul	Aug	Sep	Oct	Nov	Dec	Total
NSW	2.8	3.1	2.9										2.9
VIC	2.8	2.8	2.8										2.8
QLD	2.9	3.4	3.2										3.1
SA	3.0	2.2	2.0										2.4
WA	1.5	4.3	2.5										2.9
TAS	4.0	3.4	0.0										3.5
NT	0.0	0.0	0.0										0.0
ACT	0.0	3.0	0.0										3.0
<b>AUSTRALIA</b>	<b>2.8</b>	<b>3.1</b>	<b>2.7</b>										<b>2.9</b>

Numerator = Total Procedures

Denominator = Total Actual Donors (definition 1 on page 2)

### Multiorgan Transplantation

	Jan	Feb	Mar	Apr	May	Jun	Jul	Aug	Sep	Oct	Nov	Dec	Total
HEART+LUNGS	0	0	1										1
KIDNEY+LIVER	0	1	0										1
KIDNEY+LUNGS	0	0	1										1
KIDNEY+PANCREAS	1	6	1										8
<b>TOTAL</b>	<b>1</b>	<b>7</b>	<b>3</b>										<b>11</b>

## Transplantation by Organ Type

The following monthly totals represent the number of transplant procedures by organ type. Multiple organ transplantation is counted under each transplant type. (Refer to Method section on page 3).

### Total Kidney Transplants

	Jan	Feb	Mar	Apr	May	Jun	Jul	Aug	Sep	Oct	Nov	Dec	Total
NSW	22	18	19										59
VIC	14	15	17										46
QLD	15	8	8										31
SA	4	6	7										17
WA	3	6	7										16
TAS	2	6	0										8
NT	0	0	0										0
ACT	0	3	0										3
<b>AUSTRALIA</b>	<b>60</b>	<b>62</b>	<b>58</b>										<b>180</b>

Single Kidney (=1), Double adult/En bloc (=1) and  
Kidney + any Other Organ (=1)

### Kidney (Single) Transplants

	Jan	Feb	Mar	Apr	May	Jun	Jul	Aug	Sep	Oct	Nov	Dec	Total
NSW	22	16	18										56
VIC	14	14	16										44
QLD	14	8	8										30
SA	2	6	6										14
WA	2	5	7										14
TAS	2	4	0										6
NT	0	0	0										0
ACT	0	1	0										1
<b>AUSTRALIA</b>	<b>56</b>	<b>54</b>	<b>55</b>										<b>165</b>

### Kidney (Double Adult/En bloc) Transplants

	Jan	Feb	Mar	Apr	May	Jun	Jul	Aug	Sep	Oct	Nov	Dec	Total
NSW	0	0	0										0
VIC	0	0	0										0
QLD	1	0	0										1
SA	1	0	1										2
WA	1	0	0										1
TAS	0	0	0										0
NT	0	0	0										0
ACT	0	1	0										1
<b>AUSTRALIA</b>	<b>3</b>	<b>1</b>	<b>1</b>										<b>5</b>

## Australia and New Zealand Organ Donation Registry

---

### Kidney (+ any Other Organ) Transplants

Counts of multiorgan transplants utilising at least one kidney are excluded from the above counts.

	Jan	Feb	Mar	Apr	May	Jun	Jul	Aug	Sep	Oct	Nov	Dec	Total
KIDNEY+LIVER	0	1	0										1
KIDNEY+LUNGS	0	0	1										1
KIDNEY+PANCREAS	1	6	1										8
<b>TOTAL</b>	<b>1</b>	<b>7</b>	<b>2</b>										<b>10</b>

## Australia and New Zealand Organ Donation Registry

### Total Liver Transplants

	Jan	Feb	Mar	Apr	May	Jun	Jul	Aug	Sep	Oct	Nov	Dec	Total
NSW	9	6	6										21
VIC	5	6	6										17
QLD	6	4	4										14
SA	3	3	1										7
WA	0	2	2										4
TAS	1	4	0										5
NT	0	0	0										0
ACT	0	2	0										2
<b>AUSTRALIA</b>	<b>24</b>	<b>27</b>	<b>19</b>										<b>70</b>

Whole Liver (=1), Split Left (=1), Split Right (=1)

Reduced Size (=1) and Liver + any Other Organ (=1)

### Liver (Whole) Transplants

	Jan	Feb	Mar	Apr	May	Jun	Jul	Aug	Sep	Oct	Nov	Dec	Total
NSW	7	5	4										16
VIC	5	6	6										17
QLD	6	4	4										14
SA	3	3	1										7
WA	0	2	2										4
TAS	1	4	0										5
NT	0	0	0										0
ACT	0	0	0										0
<b>AUSTRALIA</b>	<b>22</b>	<b>24</b>	<b>17</b>										<b>63</b>

### Liver (Split) Transplants

	Jan	Feb	Mar	Apr	May	Jun	Jul	Aug	Sep	Oct	Nov	Dec	Total
NSW	2	0	2										4
VIC	0	0	0										0
QLD	0	0	0										0
SA	0	0	0										0
WA	0	0	0										0
TAS	0	0	0										0
NT	0	0	0										0
ACT	0	2	0										2
<b>AUSTRALIA</b>	<b>2</b>	<b>2</b>	<b>2</b>										<b>6</b>

## Australia and New Zealand Organ Donation Registry

### Liver (Reduced Size) Transplants

	Jan	Feb	Mar	Apr	May	Jun	Jul	Aug	Sep	Oct	Nov	Dec	Total
NSW	0	0	0										0
VIC	0	0	0										0
QLD	0	0	0										0
SA	0	0	0										0
WA	0	0	0										0
TAS	0	0	0										0
NT	0	0	0										0
ACT	0	0	0										0
<b>AUSTRALIA</b>	<b>0</b>	<b>0</b>	<b>0</b>										<b>0</b>

### Liver (+ any Other Organ) Transplants

Counts of multiorgan transplants utilising a liver are excluded from the above counts.

	Jan	Feb	Mar	Apr	May	Jun	Jul	Aug	Sep	Oct	Nov	Dec	Total
LIVER+KIDNEY	0	1	0										1
<b>TOTAL</b>	<b>0</b>	<b>1</b>	<b>0</b>										<b>1</b>

## Australia and New Zealand Organ Donation Registry

### Total Heart Transplants

	Jan	Feb	Mar	Apr	May	Jun	Jul	Aug	Sep	Oct	Nov	Dec	Total
NSW	4	2	4										10
VIC	3	5	4										12
QLD	5	2	2										9
SA	2	1	1										4
WA	0	2	1										3
TAS	0	1	0										1
NT	0	0	0										0
ACT	0	0	0										0
<b>AUSTRALIA</b>	<b>14</b>	<b>13</b>	<b>12</b>										<b>39</b>

Heart only (=1) and Heart + any Other Organ (=1)

### Heart (Only) Transplants

	Jan	Feb	Mar	Apr	May	Jun	Jul	Aug	Sep	Oct	Nov	Dec	Total
NSW	4	2	3										9
VIC	3	5	4										12
QLD	5	2	2										9
SA	2	1	1										4
WA	0	2	1										3
TAS	0	1	0										1
NT	0	0	0										0
ACT	0	0	0										0
<b>AUSTRALIA</b>	<b>14</b>	<b>13</b>	<b>11</b>										<b>38</b>

### Heart (+ any Other Organ) Transplants

Counts of multiorgan transplants utilising a heart are excluded from the above counts.

	Jan	Feb	Mar	Apr	May	Jun	Jul	Aug	Sep	Oct	Nov	Dec	Total
HEART+LUNGS	0	0	1										1
<b>TOTAL</b>	<b>0</b>	<b>0</b>	<b>1</b>										<b>1</b>

## Australia and New Zealand Organ Donation Registry

### Total Lung Transplants

	Jan	Feb	Mar	Apr	May	Jun	Jul	Aug	Sep	Oct	Nov	Dec	Total
NSW	3	4	5										12
VIC	3	4	9										16
QLD	3	3	2										8
SA	2	1	1										4
WA	0	2	0										2
TAS	1	3	0										4
NT	0	0	0										0
ACT	0	0	0										0
<b>AUSTRALIA</b>	<b>12</b>	<b>17</b>	<b>17</b>										<b>46</b>

Single Lung (=1), Double Lung (=1), Single Lung + any Other Organ (=1),  
Double Lung + any Other Organ (=1)

### Lung (Double) Transplants

	Jan	Feb	Mar	Apr	May	Jun	Jul	Aug	Sep	Oct	Nov	Dec	Total
NSW	2	3	3										8
VIC	3	3	6										12
QLD	2	3	2										7
SA	2	1	1										4
WA	0	2	0										2
TAS	1	1	0										2
NT	0	0	0										0
ACT	0	0	0										0
<b>AUSTRALIA</b>	<b>10</b>	<b>13</b>	<b>12</b>										<b>35</b>

### Lung (Single) Transplants

	Jan	Feb	Mar	Apr	May	Jun	Jul	Aug	Sep	Oct	Nov	Dec	Total
NSW	1	1	1										3
VIC	0	1	2										3
QLD	1	0	0										1
SA	0	0	0										0
WA	0	0	0										0
TAS	0	2	0										2
NT	0	0	0										0
ACT	0	0	0										0
<b>AUSTRALIA</b>	<b>2</b>	<b>4</b>	<b>3</b>										<b>9</b>

## Australia and New Zealand Organ Donation Registry

### Lung (+ any Other Organ) Transplants

Counts of multiorgan transplants utilising at least one lung are excluded from the above counts.

	Jan	Feb	Mar	Apr	May	Jun	Jul	Aug	Sep	Oct	Nov	Dec	Total
LUNGS+HEART	0	0	1										<b>1</b>
LUNGS+KIDNEY	0	0	1										<b>1</b>
<b>TOTAL</b>	<b>0</b>	<b>0</b>	<b>2</b>										<b>2</b>



## Australia and New Zealand Organ Donation Registry

### Total Pancreas Transplants

	Jan	Feb	Mar	Apr	May	Jun	Jul	Aug	Sep	Oct	Nov	Dec	Total
NSW	1	1	1										3
VIC	0	1	0										1
QLD	0	0	0										0
SA	1	0	0										1
WA	0	1	0										1
TAS	0	2	0										2
NT	0	0	0										0
ACT	0	1	0										1
<b>AUSTRALIA</b>	<b>2</b>	<b>6</b>	<b>1</b>										<b>9</b>

Whole Pancreas (=1) and Pancreas + any Other Organ (=1)

### Pancreas (Whole) Transplants

	Jan	Feb	Mar	Apr	May	Jun	Jul	Aug	Sep	Oct	Nov	Dec	Total
NSW	1	0	0										1
VIC	0	0	0										0
QLD	0	0	0										0
SA	0	0	0										0
WA	0	0	0										0
TAS	0	0	0										0
NT	0	0	0										0
ACT	0	0	0										0
<b>AUSTRALIA</b>	<b>1</b>	<b>0</b>	<b>0</b>										<b>1</b>

### Pancreas (+ any Other Organ) Transplants

Counts of multiorgan transplants utilising a pancreas are excluded from the above counts.

	Jan	Feb	Mar	Apr	May	Jun	Jul	Aug	Sep	Oct	Nov	Dec	Total
PANCREAS+KIDNEY	1	6	1										8
<b>TOTAL</b>	<b>1</b>	<b>6</b>	<b>1</b>										<b>8</b>

## Australia and New Zealand Organ Donation Registry

### Total Stomach Intestine Transplant Recipients

	Jan	Feb	Mar	Apr	May	Jun	Jul	Aug	Sep	Oct	Nov	Dec	Total
NSW	0	0	0										0
VIC	0	0	0										0
QLD	0	0	0										0
SA	0	0	0										0
WA	0	0	0										0
TAS	0	1	0										1
NT	0	0	0										0
ACT	0	0	0										0
<b>AUSTRALIA</b>	<b>0</b>	<b>1</b>	<b>0</b>										<b>1</b>

Stomach Intestine (=1) and Stomach Intestine + any Other Organ (=1)

## Activity Summary: Donation Following Circulatory Death

(See definition 2 on page 2)

### Actual Organ Donors following Circulatory Death

Actual deceased organ donors according to definition 1 on page 2.

	Jan	Feb	Mar	Apr	May	Jun	Jul	Aug	Sep	Oct	Nov	Dec	Total
NSW	5	5	6										16
VIC	3	3	7										13
QLD	6	1	3										10
SA	1	2	1										4
WA	2	0	1										3
TAS	0	1	0										1
NT	0	0	0										0
ACT	0	0	0										0
<b>AUSTRALIA</b>	<b>17</b>	<b>12</b>	<b>18</b>										<b>47</b>

### Transplant Recipients from Donors following Circulatory Death

The following monthly totals represent the number of transplant recipients from deceased organ donors following circulatory death.

	Jan	Feb	Mar	Apr	May	Jun	Jul	Aug	Sep	Oct	Nov	Dec	Total
NSW	8	15	14										37
VIC	7	2	17										26
QLD	16	2	8										26
SA	2	3	2										7
WA	3	0	2										5
TAS	0	4	0										4
NT	0	0	0										0
ACT	0	0	0										0
<b>AUSTRALIA</b>	<b>36</b>	<b>26</b>	<b>43</b>										<b>105</b>

Recipients transplanted with one or more organs are counted as one.

### Organs Transplanted from Donors following Circulatory Death

The following monthly totals of organs represent the number of organs transplanted from deceased donors following circulatory death.

	Jan	Feb	Mar	Apr	May	Jun	Jul	Aug	Sep	Oct	Nov	Dec	Total
NSW	8	17	16										41
VIC	8	3	21										32
QLD	18	2	9										29
SA	2	3	2										7
WA	4	0	2										6
TAS	0	6	0										6
NT	0	0	0										0
ACT	0	0	0										0
<b>AUSTRALIA</b>	<b>40</b>	<b>31</b>	<b>50</b>										<b>121</b>

Each organ is counted individually regardless of the type of transplantation performed.

## Australia and New Zealand Organ Donation Registry

### Organs Transplanted by Organ Type from Donors following Circulatory Death

#### Kidney

	Jan	Feb	Mar	Apr	May	Jun	Jul	Aug	Sep	Oct	Nov	Dec	Total
NSW	6	10	9										25
VIC	5	0	10										15
QLD	8	2	4										14
SA	1	2	2										5
WA	4	0	2										6
TAS	0	2	0										2
NT	0	0	0										0
ACT	0	0	0										0
<b>AUSTRALIA</b>	<b>24</b>	<b>16</b>	<b>27</b>										<b>67</b>

Single Kidney = 1 Organ Count

Double Kidney (Double adult/En bloc) = 2 Organ Counts

#### Liver

	Jan	Feb	Mar	Apr	May	Jun	Jul	Aug	Sep	Oct	Nov	Dec	Total
NSW	1	2	1										4
VIC	0	0	2										2
QLD	2	0	2										4
SA	1	0	0										1
WA	0	0	0										0
TAS	0	1	0										1
NT	0	0	0										0
ACT	0	0	0										0
<b>AUSTRALIA</b>	<b>4</b>	<b>3</b>	<b>5</b>										<b>12</b>

Whole Liver = 1 Organ Count, even if the liver is later split or reduced in size for transplantation.

#### Heart

	Jan	Feb	Mar	Apr	May	Jun	Jul	Aug	Sep	Oct	Nov	Dec	Total
NSW	0	0	1										1
VIC	1	0	1										2
QLD	3	0	1										4
SA	0	1	0										1
WA	0	0	0										0
TAS	0	0	0										0
NT	0	0	0										0
ACT	0	0	0										0
<b>AUSTRALIA</b>	<b>4</b>	<b>1</b>	<b>3</b>										<b>8</b>

Heart = 1 Organ Count, Heart + Other Organ = 1 Heart Count

## Australia and New Zealand Organ Donation Registry

### Lung

	Jan	Feb	Mar	Apr	May	Jun	Jul	Aug	Sep	Oct	Nov	Dec	Total
NSW	1	5	5										11
VIC	2	3	8										13
QLD	5	0	2										7
SA	0	0	0										0
WA	0	0	0										0
TAS	0	2	0										2
NT	0	0	0										0
ACT	0	0	0										0
<b>AUSTRALIA</b>	<b>8</b>	<b>10</b>	<b>15</b>										<b>33</b>

Single Lung = 1 Organ Count, Double Lung = 2 Organ Counts

### Pancreas

	Jan	Feb	Mar	Apr	May	Jun	Jul	Aug	Sep	Oct	Nov	Dec	Total
NSW	0	0	0										0
VIC	0	0	0										0
QLD	0	0	0										0
SA	0	0	0										0
WA	0	0	0										0
TAS	0	1	0										1
NT	0	0	0										0
ACT	0	0	0										0
<b>AUSTRALIA</b>	<b>0</b>	<b>1</b>	<b>0</b>										<b>1</b>

Whole Pancreas = 1 Organ Count

Pancreas used for pancreas islets transplantation is excluded from this count.

### Stomach Intestine

	Jan	Feb	Mar	Apr	May	Jun	Jul	Aug	Sep	Oct	Nov	Dec	Total
NSW	0	0	0										0
VIC	0	0	0										0
QLD	0	0	0										0
SA	0	0	0										0
WA	0	0	0										0
TAS	0	0	0										0
NT	0	0	0										0
ACT	0	0	0										0
<b>AUSTRALIA</b>	<b>0</b>	<b>0</b>	<b>0</b>										<b>0</b>

Stomach Intestine = 1 Organ Count

Stomach Intestine + Other Organ = 1 Organ Count

## Australia and New Zealand Organ Donation Registry

### Transplantation of Organs from Donors following Circulatory Death

#### Total Transplantation Procedures

	Jan	Feb	Mar	Apr	May	Jun	Jul	Aug	Sep	Oct	Nov	Dec	Total
NSW	8	15	14										<b>37</b>
VIC	7	2	18										<b>27</b>
QLD	16	2	8										<b>26</b>
SA	2	3	2										<b>7</b>
WA	3	0	2										<b>5</b>
TAS	0	5	0										<b>5</b>
NT	0	0	0										<b>0</b>
ACT	0	0	0										<b>0</b>
<b>AUSTRALIA</b>	<b>36</b>	<b>27</b>	<b>44</b>										<b>107</b>

### Transplantation by Organ Type from Donors following Circulatory Death

#### Total Kidney Transplants

	Jan	Feb	Mar	Apr	May	Jun	Jul	Aug	Sep	Oct	Nov	Dec	Total
NSW	6	10	9										<b>25</b>
VIC	5	0	10										<b>15</b>
QLD	8	2	4										<b>14</b>
SA	1	2	2										<b>5</b>
WA	3	0	2										<b>5</b>
TAS	0	2	0										<b>2</b>
NT	0	0	0										<b>0</b>
ACT	0	0	0										<b>0</b>
<b>AUSTRALIA</b>	<b>23</b>	<b>16</b>	<b>27</b>										<b>66</b>

Single Kidney (=1), Double adult/En bloc (=1) and  
Kidney + any Other Organ (=1)

#### Kidney (Single) Transplants

	Jan	Feb	Mar	Apr	May	Jun	Jul	Aug	Sep	Oct	Nov	Dec	Total
NSW	6	10	9										<b>25</b>
VIC	5	0	9										<b>14</b>
QLD	8	2	4										<b>14</b>
SA	1	2	2										<b>5</b>
WA	2	0	2										<b>4</b>
TAS	0	1	0										<b>1</b>
NT	0	0	0										<b>0</b>
ACT	0	0	0										<b>0</b>
<b>AUSTRALIA</b>	<b>22</b>	<b>15</b>	<b>26</b>										<b>63</b>

## Australia and New Zealand Organ Donation Registry

### Kidney (Double Adult/En bloc) Transplants

	Jan	Feb	Mar	Apr	May	Jun	Jul	Aug	Sep	Oct	Nov	Dec	Total
NSW	0	0	0										0
VIC	0	0	0										0
QLD	0	0	0										0
SA	0	0	0										0
WA	1	0	0										1
TAS	0	0	0										0
NT	0	0	0										0
ACT	0	0	0										0
<b>AUSTRALIA</b>	<b>1</b>	<b>0</b>	<b>0</b>										<b>1</b>

### Kidney (+ any Other Organ) Transplants

Counts of multiorgan transplants utilising at least one kidney are excluded from the above counts.

	Jan	Feb	Mar	Apr	May	Jun	Jul	Aug	Sep	Oct	Nov	Dec	Total
KIDNEY+LIVER	0	0	0										0
KIDNEY+LUNGS	0	0	1										1
KIDNEY+PANCREAS	0	1	0										1
<b>TOTAL</b>	<b>0</b>	<b>1</b>	<b>1</b>										<b>2</b>

## Australia and New Zealand Organ Donation Registry

### Total Liver Transplants

	Jan	Feb	Mar	Apr	May	Jun	Jul	Aug	Sep	Oct	Nov	Dec	Total
NSW	1	2	1										4
VIC	0	0	2										2
QLD	2	0	2										4
SA	1	0	0										1
WA	0	0	0										0
TAS	0	1	0										1
NT	0	0	0										0
ACT	0	0	0										0
<b>AUSTRALIA</b>	<b>4</b>	<b>3</b>	<b>5</b>										<b>12</b>

Whole Liver (=1), Split Left (=1), Split Right (=1)

Reduced Size (=1) and Liver + any Other Organ (=1)

### Liver (Whole) Transplants

	Jan	Feb	Mar	Apr	May	Jun	Jul	Aug	Sep	Oct	Nov	Dec	Total
NSW	1	2	1										4
VIC	0	0	2										2
QLD	2	0	2										4
SA	1	0	0										1
WA	0	0	0										0
TAS	0	1	0										1
NT	0	0	0										0
ACT	0	0	0										0
<b>AUSTRALIA</b>	<b>4</b>	<b>3</b>	<b>5</b>										<b>12</b>

### Liver (Split) Transplants

	Jan	Feb	Mar	Apr	May	Jun	Jul	Aug	Sep	Oct	Nov	Dec	Total
NSW	0	0	0										0
VIC	0	0	0										0
QLD	0	0	0										0
SA	0	0	0										0
WA	0	0	0										0
TAS	0	0	0										0
NT	0	0	0										0
ACT	0	0	0										0
<b>AUSTRALIA</b>	<b>0</b>	<b>0</b>	<b>0</b>										<b>0</b>



## Australia and New Zealand Organ Donation Registry

### Liver (Reduced Size) Transplants

	Jan	Feb	Mar	Apr	May	Jun	Jul	Aug	Sep	Oct	Nov	Dec	Total
NSW	0	0	0										0
VIC	0	0	0										0
QLD	0	0	0										0
SA	0	0	0										0
WA	0	0	0										0
TAS	0	0	0										0
NT	0	0	0										0
ACT	0	0	0										0
<b>AUSTRALIA</b>	<b>0</b>	<b>0</b>	<b>0</b>										<b>0</b>

### Liver (+ any Other Organ) Transplants

Counts of multiorgan transplants utilising a liver are excluded from the above counts.

	Jan	Feb	Mar	Apr	May	Jun	Jul	Aug	Sep	Oct	Nov	Dec	Total
LIVER+KIDNEY	0	0	0										0
<b>TOTAL</b>	<b>0</b>	<b>0</b>	<b>0</b>										<b>0</b>

## Australia and New Zealand Organ Donation Registry

### Total Heart Transplants

	Jan	Feb	Mar	Apr	May	Jun	Jul	Aug	Sep	Oct	Nov	Dec	Total
NSW	0	0	1										1
VIC	1	0	1										2
QLD	3	0	1										4
SA	0	1	0										1
WA	0	0	0										0
TAS	0	0	0										0
NT	0	0	0										0
ACT	0	0	0										0
<b>AUSTRALIA</b>	<b>4</b>	<b>1</b>	<b>3</b>										<b>8</b>

Heart only (=1) and Heart + any Other Organ (=1)

### Heart (Only) Transplants

	Jan	Feb	Mar	Apr	May	Jun	Jul	Aug	Sep	Oct	Nov	Dec	Total
NSW	0	0	1										1
VIC	1	0	1										2
QLD	3	0	1										4
SA	0	1	0										1
WA	0	0	0										0
TAS	0	0	0										0
NT	0	0	0										0
ACT	0	0	0										0
<b>AUSTRALIA</b>	<b>4</b>	<b>1</b>	<b>3</b>										<b>8</b>

## Australia and New Zealand Organ Donation Registry

### Total Lung Transplants

	Jan	Feb	Mar	Apr	May	Jun	Jul	Aug	Sep	Oct	Nov	Dec	Total
NSW	1	3	3										7
VIC	1	2	5										8
QLD	3	0	1										4
SA	0	0	0										0
WA	0	0	0										0
TAS	0	1	0										1
NT	0	0	0										0
ACT	0	0	0										0
<b>AUSTRALIA</b>	<b>5</b>	<b>6</b>	<b>9</b>										<b>20</b>

Single Lung (=1), Double Lung (=1), Single Lung + any Other Organ (=1),  
Double Lung + any Other Organ (=1)

### Lung (Double) Transplants

	Jan	Feb	Mar	Apr	May	Jun	Jul	Aug	Sep	Oct	Nov	Dec	Total
NSW	0	2	2										4
VIC	1	1	2										4
QLD	2	0	1										3
SA	0	0	0										0
WA	0	0	0										0
TAS	0	1	0										1
NT	0	0	0										0
ACT	0	0	0										0
<b>AUSTRALIA</b>	<b>3</b>	<b>4</b>	<b>5</b>										<b>12</b>

### Lung (Single) Transplants

	Jan	Feb	Mar	Apr	May	Jun	Jul	Aug	Sep	Oct	Nov	Dec	Total
NSW	1	1	1										3
VIC	0	1	2										3
QLD	1	0	0										1
SA	0	0	0										0
WA	0	0	0										0
TAS	0	0	0										0
NT	0	0	0										0
ACT	0	0	0										0
<b>AUSTRALIA</b>	<b>2</b>	<b>2</b>	<b>3</b>										<b>7</b>

## Australia and New Zealand Organ Donation Registry

---

### Lung (+ any Other Organ) Transplants

Counts of multiorgan transplants utilising at least one lung are excluded from the above counts.

	Jan	Feb	Mar	Apr	May	Jun	Jul	Aug	Sep	Oct	Nov	Dec	Total
LUNGS+KIDNEY	0	0	1										1
<b>TOTAL</b>	<b>0</b>	<b>0</b>	<b>1</b>										<b>1</b>

## Australia and New Zealand Organ Donation Registry

### Total Pancreas Transplants

	Jan	Feb	Mar	Apr	May	Jun	Jul	Aug	Sep	Oct	Nov	Dec	Total
NSW	0	0	0										0
VIC	0	0	0										0
QLD	0	0	0										0
SA	0	0	0										0
WA	0	0	0										0
TAS	0	1	0										1
NT	0	0	0										0
ACT	0	0	0										0
<b>AUSTRALIA</b>	<b>0</b>	<b>1</b>	<b>0</b>										<b>1</b>

Whole Pancreas (=1) and Pancreas + any Other Organ (=1)

### Pancreas (Whole) Transplants

	Jan	Feb	Mar	Apr	May	Jun	Jul	Aug	Sep	Oct	Nov	Dec	Total
NSW	0	0	0										0
VIC	0	0	0										0
QLD	0	0	0										0
SA	0	0	0										0
WA	0	0	0										0
TAS	0	0	0										0
NT	0	0	0										0
ACT	0	0	0										0
<b>AUSTRALIA</b>	<b>0</b>	<b>0</b>	<b>0</b>										<b>0</b>

### Pancreas (+ any Other Organ) Transplants

Counts of multiorgan transplants utilising a pancreas are included in the above counts.

	Jan	Feb	Mar	Apr	May	Jun	Jul	Aug	Sep	Oct	Nov	Dec	Total
PANCREAS+KIDNEY	0	1	0										1
<b>TOTAL</b>	<b>0</b>	<b>1</b>	<b>0</b>										<b>1</b>

### Total Stomach Intestine Transplants

	Jan	Feb	Mar	Apr	May	Jun	Jul	Aug	Sep	Oct	Nov	Dec	Total
NSW	0	0	0										0
VIC	0	0	0										0
QLD	0	0	0										0
SA	0	0	0										0
WA	0	0	0										0
TAS	0	0	0										0
NT	0	0	0										0
ACT	0	0	0										0
<b>AUSTRALIA</b>	<b>0</b>	<b>0</b>	<b>0</b>										<b>0</b>

Stomach Intestine (=1) and Stomach Intestine + any Other Organ (=1)