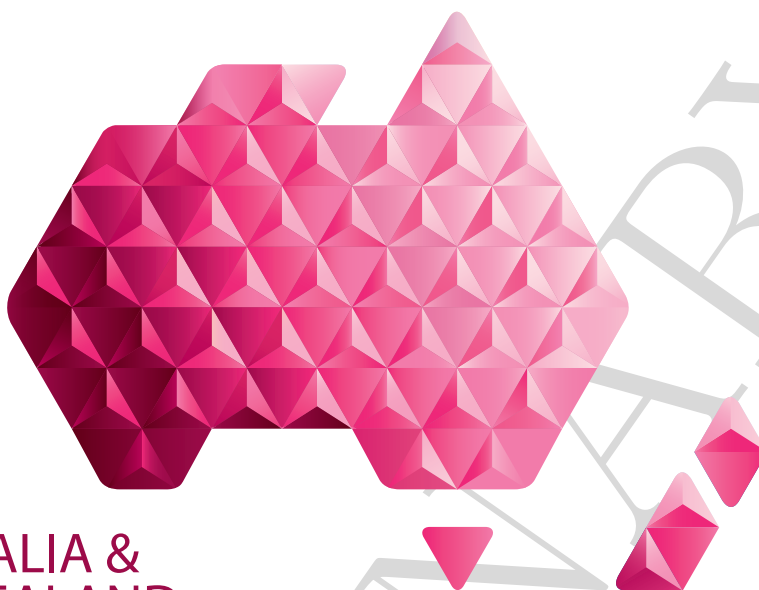


**ANZ
DATA**



**AUSTRALIA &
NEW ZEALAND**

LIVING KIDNEY DONATION
REGISTRY

Monthly Report on Living Kidney Donation in Australia

August 2019

Produced 13 September 2019 11:41 AM
Data Received by ANZDATA up to 12 September 2019

Contents

| | |
|---|----------|
| Explanatory Notes | 2 |
| Definitions | 2 |
| Notes | 2 |
| Summary of Living Kidney Donation | 3 |
| Total Living Kidney Donors by Donor State | 4 |
| Genetically-Related Donors by Donor State | 4 |
| Emotionally-Related Donors by Donor State | 4 |
| Unrelated Donors by Donor State | 5 |
| Australian Paired-Kidney Exchange Program (AKX) | 5 |
| Transplant Recipients from Living Kidney Donors | 6 |
| Recipients by State of Donation | 6 |
| Recipients by State of Transplantation | 6 |
| Transplanting Hospitals reporting in 2019 | 7 |

PRELIMINARY

Explanatory Notes

Definitions

Donor – A human being, living or deceased, who is a source of cells, tissues or organs for the purpose of transplantation.

Living Kidney Donor – A living human being from whom a kidney has been removed for the purpose of transplantation. A Living Kidney Donor has one of the following three possible relationships with the recipient:

1. Related:

(a) Genetically Related:

- i. 1st Degree Genetic Relative: Parent, Sibling, Offspring
- ii. 2nd Degree genetic relative, e.g. grandparent, grandchild, aunt, uncle, niece, nephew
- iii. Other than 1st or 2nd degree genetically related, for example cousin

(b) Emotionally Related: Spouse (if not genetically related); in-laws; Adopted; Friend

2. Unrelated = Non Related: Not Genetically or Emotionally Related

Paired Kidney Exchange Programme (AKX) – This programme is an initiative of the Australian Organ and Tissue Authority (OTA) to increase the options for living kidney donation. The programme was established in 2010.

Paired Kidney Exchange Donor – A living kidney donor whom is identified as a match for patients who are eligible for a kidney transplant, and have a living donor who is willing but unable to donate because of an incompatible blood type or tissue type. This donor is willing to donate their kidney to another person.

Recipient – A consented eligible person into whom organs, retrieved for the purpose of transplantation, are received.

Transplantation – The transfer of organs or tissue from donor to recipient with the aim of restoring body function(s) of the recipient.

Notes

For the purpose of this report data representing Living Kidney Donors are defined in the definition outlined above.

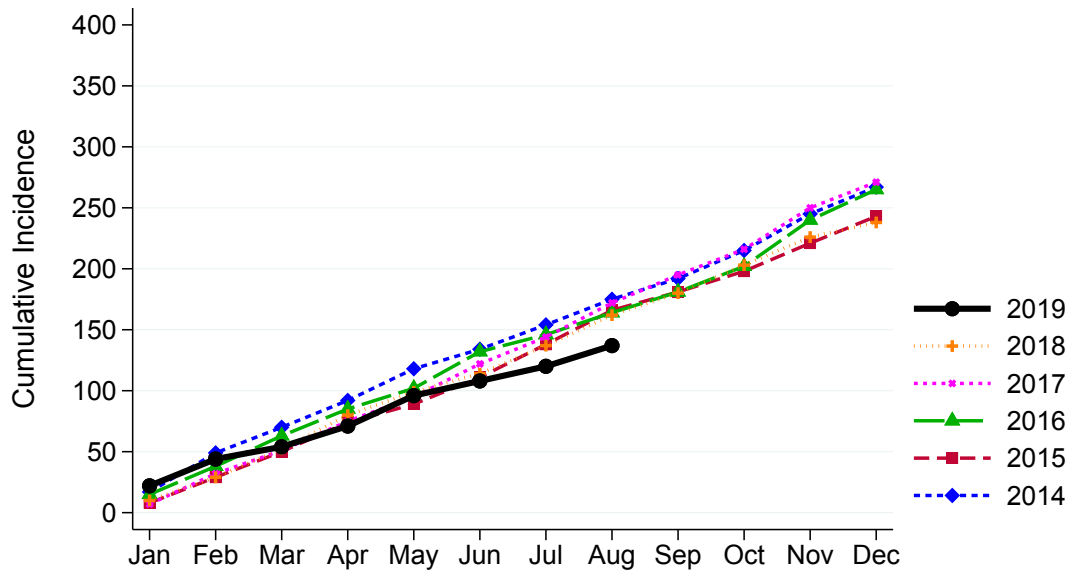
All tables are presented by state/territory of donation, unless otherwise specified.

This report supercedes previous monthly report and as data reported is subject to revision it may change in subsequent reporting.

Summary of Living Kidney Donation

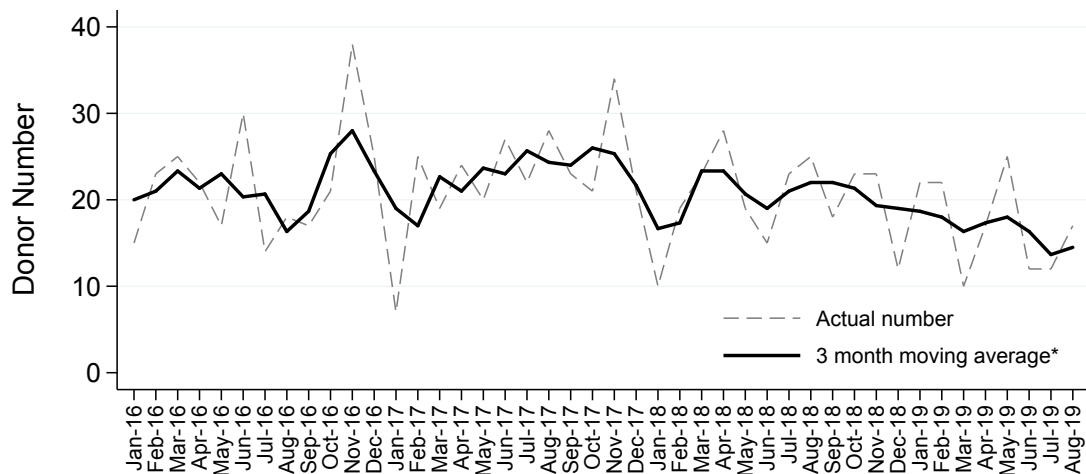
Living Kidney Donors per Month

Australia



Living Kidney Donors per Month

Australia



*The average is calculated from the number of living kidney donors in the current month, previous month and next month; except for the most recent month which is calculated from the previous and current months.

Living Kidney Donor Registry
in conjunction with the ANZDATA Registry

Total Living Kidney Donors by Donor State

| | Jan | Feb | Mar | Apr | May | Jun | Jul | Aug | Sep | Oct | Nov | Dec | Total |
|------------------|-----------|-----------|-----------|-----------|-----------|-----------|-----------|-----------|-----|-----|-----|-----|------------|
| NSW | 7 | 5 | 5 | 9 | 8 | 2 | 4 | 6 | | | | | 46 |
| VIC | 8 | 9 | 4 | 3 | 8 | 5 | 5 | 2 | | | | | 44 |
| QLD | 2 | 5 | 1 | 2 | 4 | 1 | 1 | 3 | | | | | 19 |
| SA | 2 | 1 | 0 | 2 | 3 | 2 | 2 | 1 | | | | | 13 |
| WA | 3 | 2 | 0 | 1 | 2 | 2 | 0 | 5 | | | | | 15 |
| TAS | 0 | 0 | 0 | 0 | 0 | 0 | 0 | 0 | | | | | 0 |
| NT | 0 | 0 | 0 | 0 | 0 | 0 | 0 | 0 | | | | | 0 |
| ACT | 0 | 0 | 0 | 0 | 0 | 0 | 0 | 0 | | | | | 0 |
| AUSTRALIA | 22 | 22 | 10 | 17 | 25 | 12 | 12 | 17 | | | | | 137 |

Genetically-Related Donors by Donor State

Genetically-related donors includes all degrees of genetically related donors such as siblings, parents, children etc.

| | Jan | Feb | Mar | Apr | May | Jun | Jul | Aug | Sep | Oct | Nov | Dec | Total |
|------------------|----------|----------|----------|-----------|-----------|----------|----------|-----------|-----|-----|-----|-----|-----------|
| NSW | 2 | 3 | 4 | 4 | 4 | 1 | 2 | 3 | | | | | 23 |
| VIC | 0 | 1 | 1 | 3 | 4 | 2 | 1 | 2 | | | | | 14 |
| QLD | 0 | 3 | 1 | 1 | 2 | 1 | 0 | 2 | | | | | 10 |
| SA | 1 | 0 | 0 | 1 | 0 | 1 | 1 | 1 | | | | | 5 |
| WA | 1 | 2 | 0 | 1 | 1 | 2 | 0 | 3 | | | | | 10 |
| TAS | 0 | 0 | 0 | 0 | 0 | 0 | 0 | 0 | | | | | 0 |
| NT | 0 | 0 | 0 | 0 | 0 | 0 | 0 | 0 | | | | | 0 |
| ACT | 0 | 0 | 0 | 0 | 0 | 0 | 0 | 0 | | | | | 0 |
| AUSTRALIA | 4 | 9 | 6 | 10 | 11 | 7 | 4 | 11 | | | | | 62 |

Emotionally-Related Donors by Donor State

Emotionally-related donors includes donors who have an emotional or social attachment to the recipient, but are not genetically related. This includes spouses and friends. Donors for the Australian Paired-Kidney Exchange Program are also unrelated genetically, but are listed separately.

| | Jan | Feb | Mar | Apr | May | Jun | Jul | Aug | Sep | Oct | Nov | Dec | Total |
|------------------|----------|----------|----------|----------|----------|----------|----------|----------|-----|-----|-----|-----|-----------|
| NSW | 1 | 2 | 1 | 5 | 2 | 1 | 2 | 3 | | | | | 17 |
| VIC | 0 | 3 | 1 | 0 | 0 | 3 | 2 | 0 | | | | | 9 |
| QLD | 0 | 2 | 0 | 1 | 2 | 0 | 1 | 1 | | | | | 7 |
| SA | 1 | 0 | 0 | 1 | 3 | 1 | 0 | 0 | | | | | 6 |
| WA | 1 | 0 | 0 | 0 | 1 | 0 | 0 | 2 | | | | | 4 |
| TAS | 0 | 0 | 0 | 0 | 0 | 0 | 0 | 0 | | | | | 0 |
| NT | 0 | 0 | 0 | 0 | 0 | 0 | 0 | 0 | | | | | 0 |
| ACT | 0 | 0 | 0 | 0 | 0 | 0 | 0 | 0 | | | | | 0 |
| AUSTRALIA | 3 | 7 | 2 | 7 | 8 | 5 | 5 | 6 | | | | | 43 |

Living Kidney Donor Registry
in conjunction with the ANZDATA Registry

Unrelated Donors by Donor State

| | Jan | Feb | Mar | Apr | May | Jun | Jul | Aug | Sep | Oct | Nov | Dec | Total |
|------------------|-----------|----------|----------|----------|----------|----------|----------|----------|-----|-----|-----|-----|-----------|
| NSW | 4 | 0 | 0 | 0 | 2 | 0 | 0 | 0 | | | | | 6 |
| VIC | 8 | 5 | 2 | 0 | 4 | 0 | 2 | 0 | | | | | 21 |
| QLD | 2 | 0 | 0 | 0 | 0 | 0 | 0 | 0 | | | | | 2 |
| SA | 0 | 1 | 0 | 0 | 0 | 0 | 1 | 0 | | | | | 2 |
| WA | 1 | 0 | 0 | 0 | 0 | 0 | 0 | 0 | | | | | 1 |
| TAS | 0 | 0 | 0 | 0 | 0 | 0 | 0 | 0 | | | | | 0 |
| NT | 0 | 0 | 0 | 0 | 0 | 0 | 0 | 0 | | | | | 0 |
| ACT | 0 | 0 | 0 | 0 | 0 | 0 | 0 | 0 | | | | | 0 |
| AUSTRALIA | 15 | 6 | 2 | 0 | 6 | 0 | 3 | 0 | | | | | 32 |

Australian Paired-Kidney Exchange Program (AKX)

Donors for the AKX Program are included in the unrelated donor numbers above.

| | Jan | Feb | Mar | Apr | May | Jun | Jul | Aug | Sep | Oct | Nov | Dec | Total |
|------------------|-----------|----------|----------|----------|----------|----------|----------|----------|-----|-----|-----|-----|-----------|
| NSW | 3 | 0 | 0 | 0 | 2 | 0 | 0 | 0 | | | | | 5 |
| VIC | 7 | 5 | 2 | 0 | 4 | 0 | 2 | 0 | | | | | 20 |
| QLD | 2 | 0 | 0 | 0 | 0 | 0 | 0 | 0 | | | | | 2 |
| SA | 0 | 1 | 0 | 0 | 0 | 0 | 1 | 0 | | | | | 2 |
| WA | 1 | 0 | 0 | 0 | 0 | 0 | 0 | 0 | | | | | 1 |
| TAS | 0 | 0 | 0 | 0 | 0 | 0 | 0 | 0 | | | | | 0 |
| NT | 0 | 0 | 0 | 0 | 0 | 0 | 0 | 0 | | | | | 0 |
| ACT | 0 | 0 | 0 | 0 | 0 | 0 | 0 | 0 | | | | | 0 |
| AUSTRALIA | 13 | 6 | 2 | 0 | 6 | 0 | 3 | 0 | | | | | 30 |

Transplant Recipients from Living Kidney Donors

Recipients by State of Donation

| | Jan | Feb | Mar | Apr | May | Jun | Jul | Aug | Sep | Oct | Nov | Dec | Total |
|------------------|-----------|-----------|-----------|-----------|-----------|-----------|-----------|-----------|-----|-----|-----|-----|------------|
| NSW | 7 | 5 | 5 | 9 | 8 | 2 | 4 | 6 | | | | | 46 |
| VIC | 8 | 9 | 4 | 3 | 8 | 5 | 5 | 2 | | | | | 44 |
| QLD | 2 | 5 | 1 | 2 | 4 | 1 | 1 | 3 | | | | | 19 |
| SA | 2 | 1 | 0 | 2 | 3 | 2 | 2 | 1 | | | | | 13 |
| WA | 3 | 2 | 0 | 1 | 2 | 2 | 0 | 5 | | | | | 15 |
| TAS | 0 | 0 | 0 | 0 | 0 | 0 | 0 | 0 | | | | | 0 |
| NT | 0 | 0 | 0 | 0 | 0 | 0 | 0 | 0 | | | | | 0 |
| ACT | 0 | 0 | 0 | 0 | 0 | 0 | 0 | 0 | | | | | 0 |
| AUSTRALIA | 22 | 22 | 10 | 17 | 25 | 12 | 12 | 17 | | | | | 137 |

Recipients by State of Transplantation

| | Jan | Feb | Mar | Apr | May | Jun | Jul | Aug | Sep | Oct | Nov | Dec | Total |
|------------------|-----------|-----------|-----------|-----------|-----------|-----------|-----------|-----------|----------|----------|----------|----------|------------|
| NSW | 7 | 5 | 5 | 9 | 9 | 2 | 4 | 6 | | | | | 47 |
| VIC | 10 | 9 | 4 | 3 | 7 | 5 | 5 | 2 | | | | | 45 |
| QLD | 1 | 5 | 1 | 2 | 4 | 1 | 1 | 3 | | | | | 18 |
| SA | 2 | 1 | 0 | 2 | 3 | 2 | 2 | 1 | | | | | 13 |
| WA | 2 | 2 | 0 | 1 | 2 | 2 | 0 | 5 | | | | | 14 |
| TAS | 0 | 0 | 0 | 0 | 0 | 0 | 0 | 0 | | | | | 0 |
| NT | 0 | 0 | 0 | 0 | 0 | 0 | 0 | 0 | | | | | 0 |
| ACT | 0 | 0 | 0 | 0 | 0 | 0 | 0 | 0 | | | | | 0 |
| AUSTRALIA | 22 | 22 | 10 | 17 | 25 | 12 | 12 | 17 | 0 | 0 | 0 | 0 | 137 |

Transplanting Hospitals reporting in 2019

| Transplanting Hospital | State |
|--|-------|
| JOHN HUNTER HOSPITAL | NSW |
| PRINCE OF WALES HOSPITAL | NSW |
| ROYAL NORTH SHORE HOSPITAL | NSW |
| ST VINCENT'S HOSPITAL - SYDNEY | NSW |
| ST VINCENT'S PRIVATE HOSPITAL - SYDNEY | NSW |
| STATEWIDE RENAL SERVICES | NSW |
| WESTMEAD HOSPITAL | NSW |
| QUEENSLAND CHILDREN'S HOSPITAL | QLD |
| QUEENSLAND KIDNEY TRANSPLANT SERVICE | QLD |
| CENTRAL NORTHERN ADELAIDE RENAL | SA |
| ALFRED HOSPITAL | VIC |
| AUSTIN HOSPITAL | VIC |
| MONASH MEDICAL CENTRE (ADULTS) | VIC |
| ROYAL CHILDRENS HOSPITAL | VIC |
| ROYAL MELBOURNE HOSPITAL | VIC |
| FIONA STANLEY HOSPITAL | WA |
| PERTH CHILDREN'S HOSPITAL | WA |
| SIR CHARLES GAIRDNER HOSPITAL | WA |