



Monthly Report on Deceased Organ Donation in Australia

December 2018

Produced 22 July 2019 11:52 AM
Data Received by ANZOD up to 21 July 2019

Contents

Explanatory notes	2
Definitions	2
Notes	2
Method	3
References	3
Deceased Organ Donation	4
Total Actual Deceased Organ Donors	6
Multiorgan Deceased Donors	6
Intended Deceased Organ Donors	6
Transplant Recipients from Deceased Organ Donors	7
Total Transplant Recipients from Deceased Organ Donors	9
Mean Transplant Recipients Per Actual Deceased Organ Donor	9
Recipients of Multiple Organs	9
Organs Transplanted from Deceased Organ Donors	10
Total Organs Transplanted	12
Mean Organs Transplanted Per Actual Deceased Organ Donor	12
Organs Transplanted by Organ Type	13
Transplantation of Organs from Deceased Organ Donors	16
Total Transplantation Procedures	16
Mean Transplantation Procedures	16
Multiorgan Transplantation	16
Transplantation by Organ Type	17
Activity Summary: Donation Following Circulatory Death	26
Actual Organ Donors following Circulatory Death	26
Transplant Recipients from Donors following Circulatory Death	26
Organs Transplanted from Donors following Circulatory Death	26
Organs Transplanted by Organ Type from Donors following Circulatory Death	27
Transplantation of Organs from Donors following Circulatory Death	29
Transplantation by Organ Type from Donors following Circulatory Death	29

Explanatory notes

Definitions

- 1 Actual Deceased Organ Donor – A person for whom the organ retrieval procedure commenced in the operating room (with surgical incision) for the purpose of transplantation. This includes donors who may have been deemed medically unsuitable during surgery or after the removal of organs.^{1,2,3,4}
- 2 Donation after Circulatory Death (DCD) – Donation, for the purpose of transplantation, occurs following death of a person resulting from the irreversible cessation of circulatory and respiratory function.⁴
- 3 Intended Deceased Organ Donor – A person for whom the donation workup was initiated as evidenced by both:
 - Formal written consent undertaken, including consent for donation of specific organs and/or tissues, and
 - Blood for tissue typing sent with allocation of a donor ID;but donation did not proceed.⁵
- 4 Multiorgan Donor – An actual deceased organ donor from whom at least two different types of organs have been retrieved for the purpose of transplantation.⁴
- 5 Recipient – An individual into whom allogeneic human cells, tissues or organs were transplanted.⁴
- 6 Recipient of Multiple Organs – A transplant recipient where two or more different types of organs have been utilised for transplantation in the same operative procedure. This excludes double adult kidney, en bloc kidney and double lung transplants. A single recipient can receive multiple organs in a single transplantation event.
- 7 Retrieval – The procedure of removing organs or tissues from donor.⁴
- 8 Transplantation – The transfer of organs and/or tissue from donor to recipient with the aim of restoring body function(s) of the recipient.⁴
- 9 Counts pertain to solid organs only (Kidney, Liver, Heart, Lung, Pancreas and Stomach Intestines). Pancreatic Islets are reported as “tissue”.

Notes

This report supersedes previous monthly reports and as data reported is subject to revision it may change in subsequent reporting.

All donation and transplantation data is presented by the state or territory of donation

Victorian activity includes those donors from Albury, NSW due to the proximity of Albury to DonateLife services in Victoria.

Method

To assist with transparency of reporting, the counting method is detailed below.

In Australia, data is collected via the Electronic Donor Record (EDR) and is then submitted to the online ANZOD Registry application via an XML for data validation and analysis.

Monthly data presents the number of Actual and Intended organ donors (as per definitions 1 and 3 on page 2) for a calendar month.

The count of transplant recipients identifies the number of individuals who fall under definition 5 (page 2) for the reporting period.

The count of organs transplanted identifies the number of individual organs, regardless of the type of transplant performed.^{6,7,8} Therefore, for reporting the number of organs transplanted, double lungs and double adult/en bloc kidneys have an organ count of two. A liver split into two segments and each transplanted into two recipients is counted as one organ transplanted.

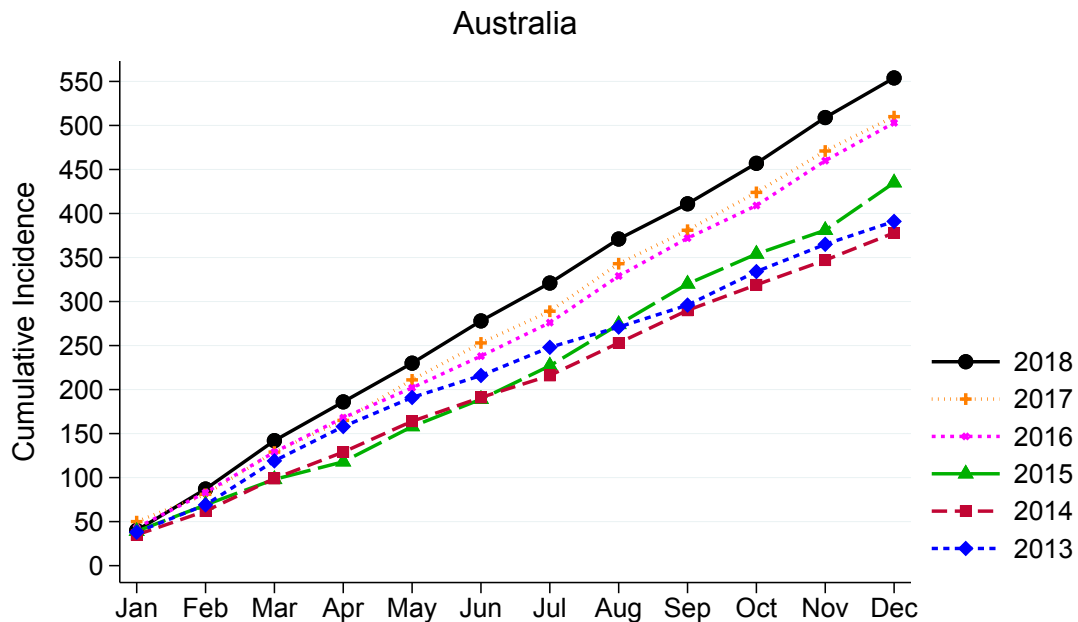
In comparison, reporting of transplantation of organs represents the number of transplant procedures where one or more organs are transplanted during a single event.^{9,10,11} For reporting of double lungs and double adult/en bloc kidneys the transplantation count is one.

References

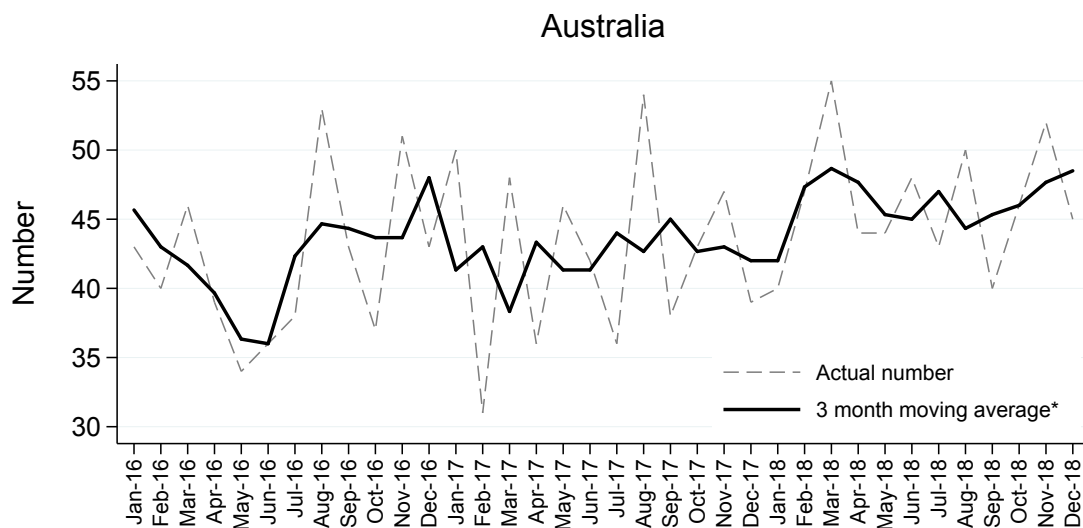
- 1 B.Dominguez-Hill et. al., The critical pathway for deceased donation: reportable uniformity in the approach to deceased donation (2011). *Transplant International*; 373-378.
- 2 ODEQUS Quality Criteria & Quality Indicators in Organ Donation (2013). Available at: http://www.odequs.eu/pdf/ODEQUS_Quality_Criteria-Indicators.pdf
- 3 Variation in Organ Donation Rates in Switzerland: Prospective Cohort Study of Potential Donors (SwissPOD) 2012. Available at: <https://www.swisstransplant.org/14/organ-donation-transplantation-allocation-coordination-wait-list-statistics.php?dl=1&datei=SwissPOD-StudyReport-English.pdf>
- 4 Organ Donation and Transplantation: Striving to Achieve Self-Sufficiency. Third Global WHO Consultation. Madrid (2010). Available at: http://www.transplant-observatory.org/SiteCollectionDocuments/glorepthirdwhoglobalconsultation_part2.pdf
- 5 Formal written letter, Yael Cass, Australian Organ and Tissue Authority, Intended donor definition, (2013).
- 6 B.Dominguez-Gil et. al. Current situation of donation after circulatory death in European Countries. *Transplant International* (2011) 676-686
- 7 Federal Regulations - Title 42: Public Health PART 486-CONDITIONS FOR COVERAGE OF SPECIALISED SERVICES FURNISHED BY SUPPLIERS Subpart G-Requirements for Certification and Designation and Conditions for Coverage: Organ Procurement Organizations
- 8 NHS Blood and Transplantation. Organ Donation and Transplantation Activity Report 2012/13
- 9 Newsletter Transplant of the Council of Europe Organ Transplantation Activity Definitions.
- 10 WHO International Counting Rules
- 11 International Registry in Organ Donation and Transplantation (IRODAT) Variable Definition (2013)

Deceased Organ Donation

Actual Deceased Organ Donors per Month



Actual Deceased Organ Donors per Month

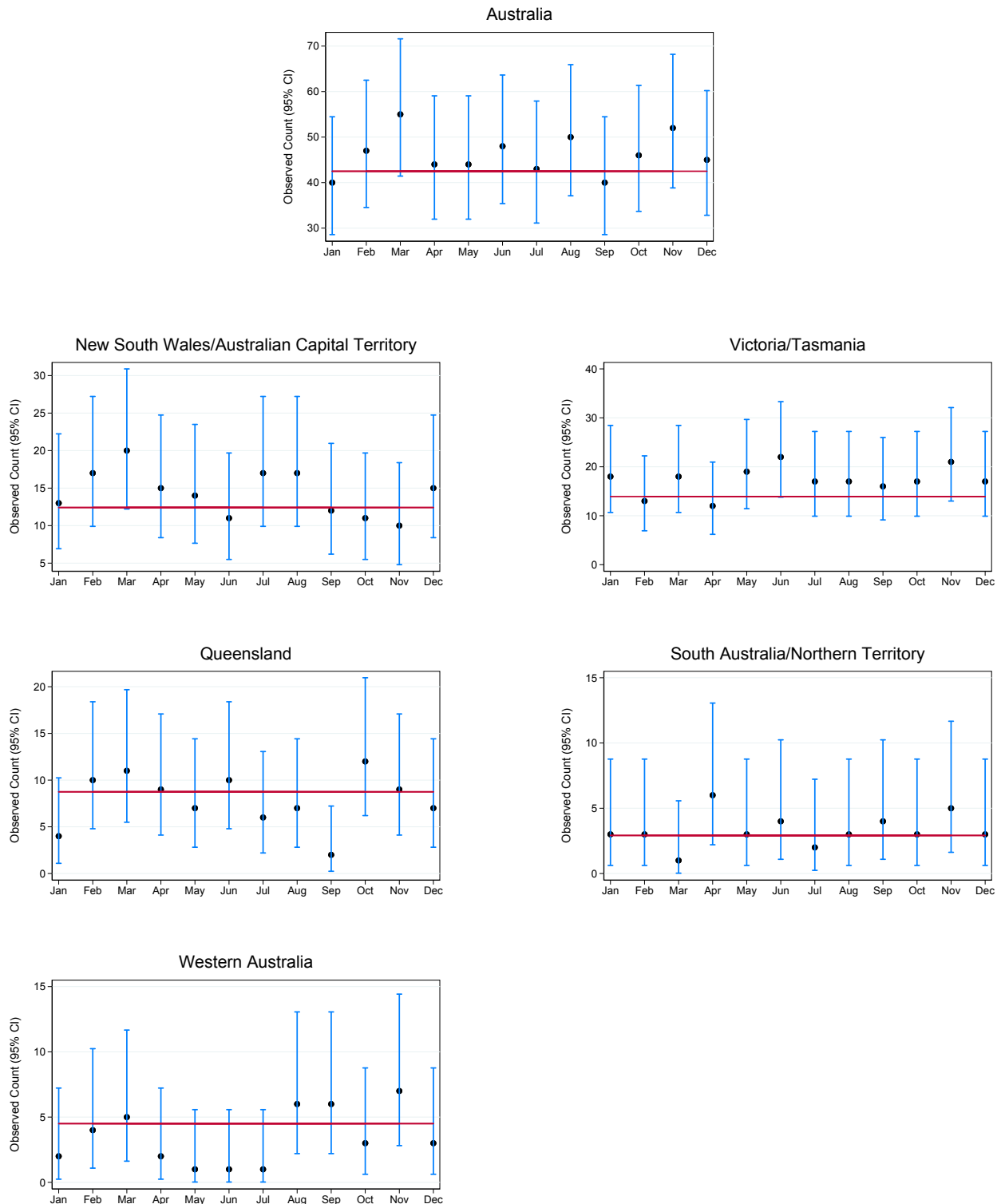


*The average is calculated from the number of actual deceased donors in the current month, previous month and next month; except for the most recent month which is calculated from the previous and current months.

Australia and New Zealand Organ Donation Registry

Actual Deceased Organ Donors per Month and 95% Confidence Intervals by Jurisdiction , 2018

The plots below illustrate month-to-month variability in donor numbers. 95% confidence intervals are exact Poisson intervals. Reference line is the 2017 monthly average. Note the different y-axis scales for each jurisdiction.



Australia and New Zealand Organ Donation Registry

Total Actual Deceased Organ Donors

Actual deceased organ donors according to definition 1 on page 2.

	Jan	Feb	Mar	Apr	May	Jun	Jul	Aug	Sep	Oct	Nov	Dec	Total	DPMP ^{*(1)}	DPMP ^{*(2)}
NSW	10	13	18	14	12	10	15	16	11	11	8	13	151	19.5	18.9
VIC	16	10	17	10	18	22	16	17	15	16	21	15	193	29.9	
QLD	4	10	11	9	7	10	6	7	2	12	9	7	94	18.8	
SA	2	3	1	5	3	4	2	2	4	2	5	3	36	20.7	
WA	2	4	5	2	1	1	1	6	6	3	7	3	41	15.8	
TAS	2	3	1	2	1	0	1	0	1	1	0	2	14	26.5	
NT	1	0	0	1	0	0	0	1	0	1	0	0	4	16.2	
ACT	3	4	2	1	2	1	2	1	1	0	2	2	21	32.4	49.9
AUSTRALIA	40	47	55	44	44	48	43	50	40	46	52	45	554	22.2	

* Donors per million population

Based on the estimate resident population at June 2018 3101.0 Australian Demographic Statistics (Australian Bureau of Statistics) released December 2018

⁽¹⁾ NSW population excludes residents of Southern Area Health Service (included in ACT population)

⁽²⁾ NSW population includes residents of Southern Area Health Service (excluded in ACT population)

Multiorgan Deceased Donors

Multiorgan deceased donors according to definition 4 on page 2.

	Jan	Feb	Mar	Apr	May	Jun	Jul	Aug	Sep	Oct	Nov	Dec	Total
NSW	5	7	15	9	9	5	7	8	6	6	4	9	90
VIC	9	6	12	7	8	15	7	13	12	13	12	9	123
QLD	2	8	10	8	4	7	6	6	1	10	7	6	75
SA	2	2	1	3	2	2	0	2	4	1	4	2	25
WA	1	4	5	1	1	1	1	4	4	3	5	2	32
TAS	2	2	1	1	1	0	1	0	1	0	0	1	10
NT	1	0	0	0	0	0	0	1	0	0	0	0	2
ACT	0	4	2	1	2	1	1	0	1	0	2	1	15
AUSTRALIA	22	33	46	30	27	31	23	34	29	33	34	30	372

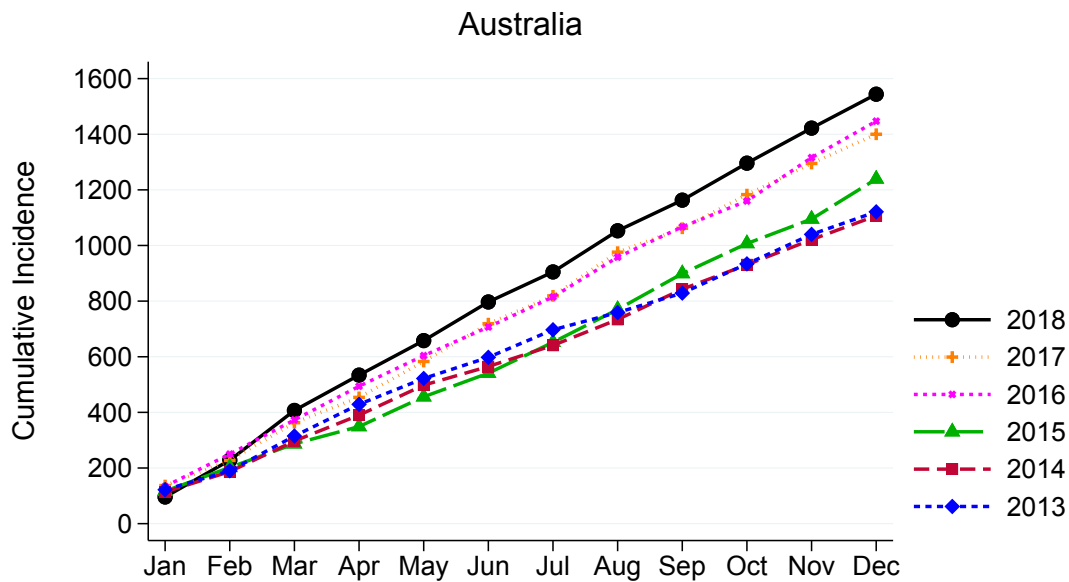
Intended Deceased Organ Donors

Intended deceased organ donors according to definition 3 on page 2.

	Jan	Feb	Mar	Apr	May	Jun	Jul	Aug	Sep	Oct	Nov	Dec	Total
NSW	4	0	1	4	5	2	2	4	2	3	4	1	32
VIC	5	3	6	3	9	7	4	7	5	6	3	6	64
QLD	1	2	1	1	2	5	2	3	4	3	2	2	28
SA	1	0	2	3	1	2	0	3	1	2	2	3	20
WA	0	0	0	1	3	0	0	1	1	1	2	1	10
TAS	0	0	0	1	0	0	0	0	0	0	0	1	2
NT	0	0	0	0	0	0	0	0	0	0	0	0	0
ACT	0	0	0	2	0	1	0	0	2	0	0	1	6
AUSTRALIA	11	5	10	15	20	17	8	18	15	15	13	15	162

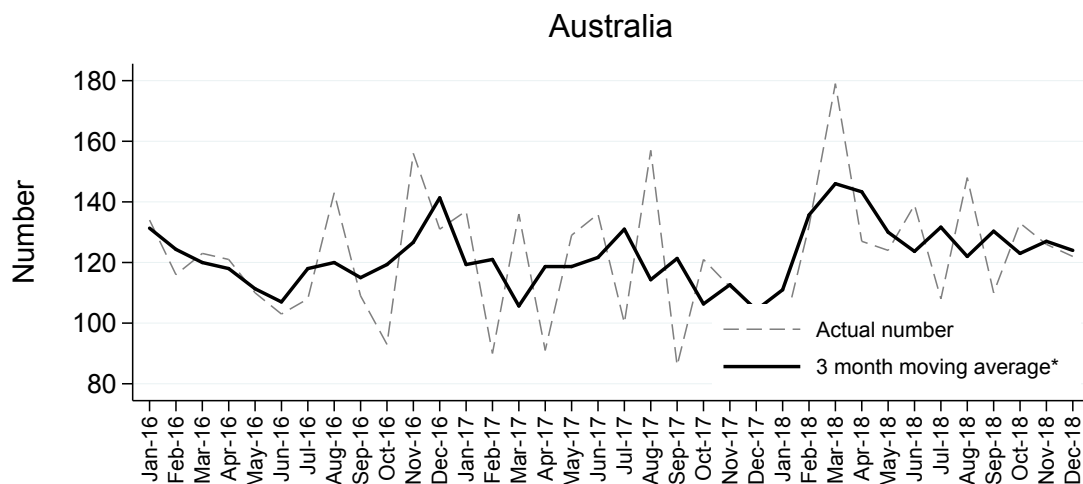
Transplant Recipients from Deceased Organ Donors

Transplant Recipients per Month from Deceased Organ Donors



Recipients transplanted with one or more organs are counted as one.

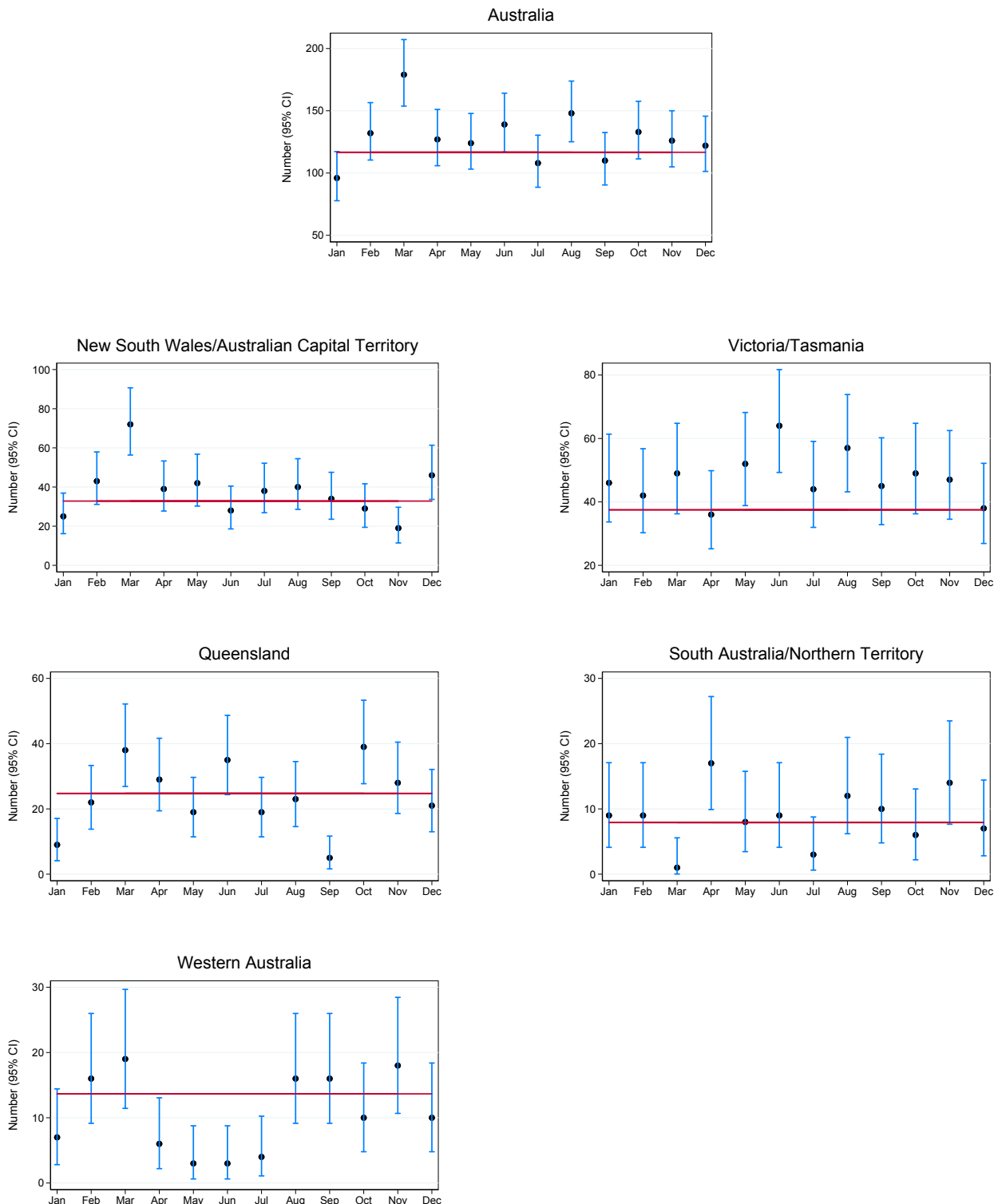
Transplant Recipients per Month from Deceased Organ Donors



*The average is calculated from the number of transplant recipients in the current month, previous month and next month; except for the most recent month which is calculated from the previous and current months.

Total Transplant Recipients from Deceased Organ Donors per Month and 95% Confidence Intervals by Jurisdiction , 2018

The plots below illustrate month-to-month variability in the number of transplant recipients. 95% confidence intervals are exact Poisson intervals. Reference line is the 2017 monthly average. Note the different y-axis scales for each jurisdiction. Jurisdiction of donation is not related to state/territory of transplantation.



Australia and New Zealand Organ Donation Registry

Total Transplant Recipients from Deceased Organ Donors

	Jan	Feb	Mar	Apr	May	Jun	Jul	Aug	Sep	Oct	Nov	Dec	Total
NSW	20	27	63	36	35	24	32	40	29	29	14	39	388
VIC	39	35	46	29	50	64	39	57	41	48	47	34	529
QLD	9	22	38	29	19	35	19	23	5	39	28	21	287
SA	6	9	1	15	8	9	3	8	10	5	14	7	95
WA	7	16	19	6	3	3	4	16	16	10	18	10	128
TAS	7	7	3	7	2	0	5	0	4	1	0	4	40
NT	3	0	0	2	0	0	0	4	0	1	0	0	10
ACT	5	16	9	3	7	4	6	0	5	0	5	7	67
AUSTRALIA	96	132	179	127	124	139	108	148	110	133	126	122	1544

Recipients transplanted with one or more organs are counted as one in the monthly totals.

Mean Transplant Recipients Per Actual Deceased Organ Donor

	Jan	Feb	Mar	Apr	May	Jun	Jul	Aug	Sep	Oct	Nov	Dec	Total
NSW	2.0	2.1	3.5	2.6	2.9	2.4	2.1	2.5	2.6	2.6	1.8	3.0	2.6
VIC	2.4	3.5	2.7	2.9	2.8	2.9	2.4	3.4	2.7	3.0	2.2	2.3	2.7
QLD	2.3	2.2	3.5	3.2	2.7	3.5	3.2	3.3	2.5	3.3	3.1	3.0	3.1
SA	3.0	3.0	1.0	3.0	2.7	2.3	1.5	4.0	2.5	2.5	2.8	2.3	2.6
WA	3.5	4.0	3.8	3.0	3.0	3.0	4.0	2.7	2.7	3.3	2.6	3.3	3.1
TAS	3.5	2.3	3.0	3.5	2.0	0.0	5.0	0.0	4.0	1.0	0.0	2.0	2.9
NT	3.0	0.0	0.0	2.0	0.0	0.0	0.0	4.0	0.0	1.0	0.0	0.0	2.5
ACT	1.7	4.0	4.5	3.0	3.5	4.0	3.0	0.0	5.0	0.0	2.5	3.5	3.2
AUSTRALIA	2.4	2.8	3.3	2.9	2.8	2.9	2.5	3.0	2.8	2.9	2.4	2.7	2.8

Numerator = Total Recipients

Denominator = Total Actual Deceased Donors (definition 1 on page 2)

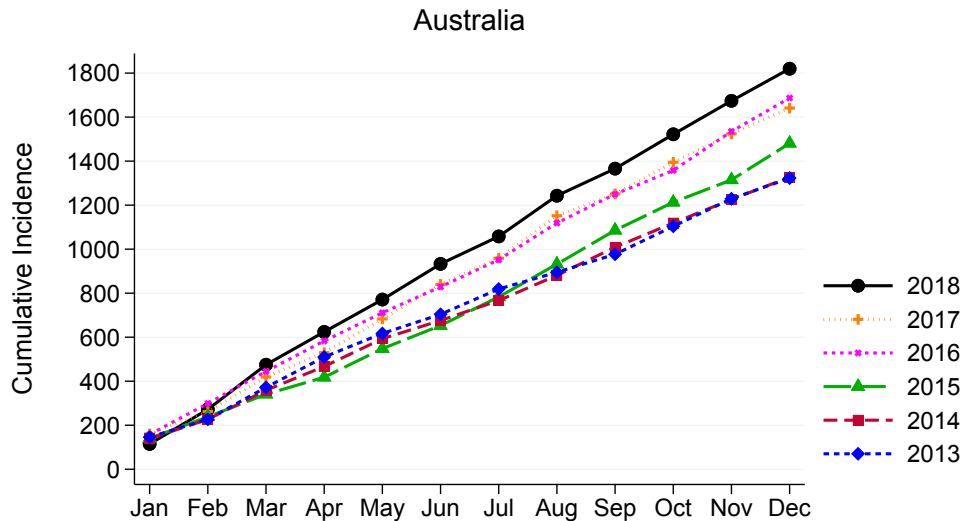
Recipients of Multiple Organs

Recipients of multiple organs according to definition 6 on page 2.

	Jan	Feb	Mar	Apr	May	Jun	Jul	Aug	Sep	Oct	Nov	Dec	Total
NSW	0	2	4	0	2	1	1	2	1	0	1	4	18
VIC	1	1	1	2	3	2	1	6	1	5	2	2	27
QLD	1	1	1	1	1	1	1	0	0	1	0	3	11
SA	0	0	0	0	2	0	0	1	0	0	2	0	5
WA	0	1	1	0	0	0	0	1	0	0	2	1	6
TAS	0	1	0	0	0	0	0	0	0	0	0	0	1
NT	0	0	0	0	0	0	0	1	0	0	0	0	1
ACT	0	1	1	0	1	0	0	0	0	0	1	0	4
AUSTRALIA	2	7	8	3	9	4	3	11	2	6	8	10	73

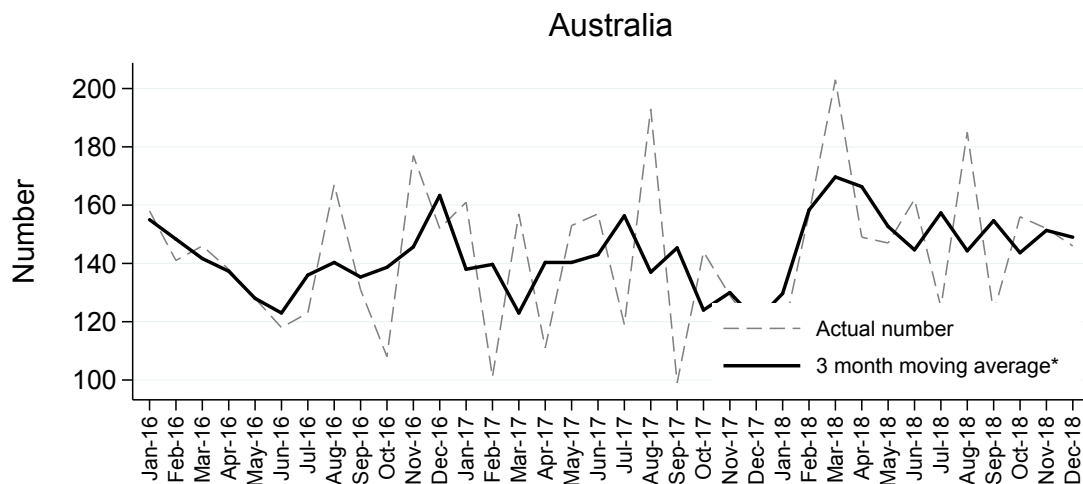
Organs Transplanted from Deceased Organ Donors

Organs Transplanted per Month from Deceased Organ Donors



Each organ is counted individually regardless of the type of transplantation performed.^{6,7,8}

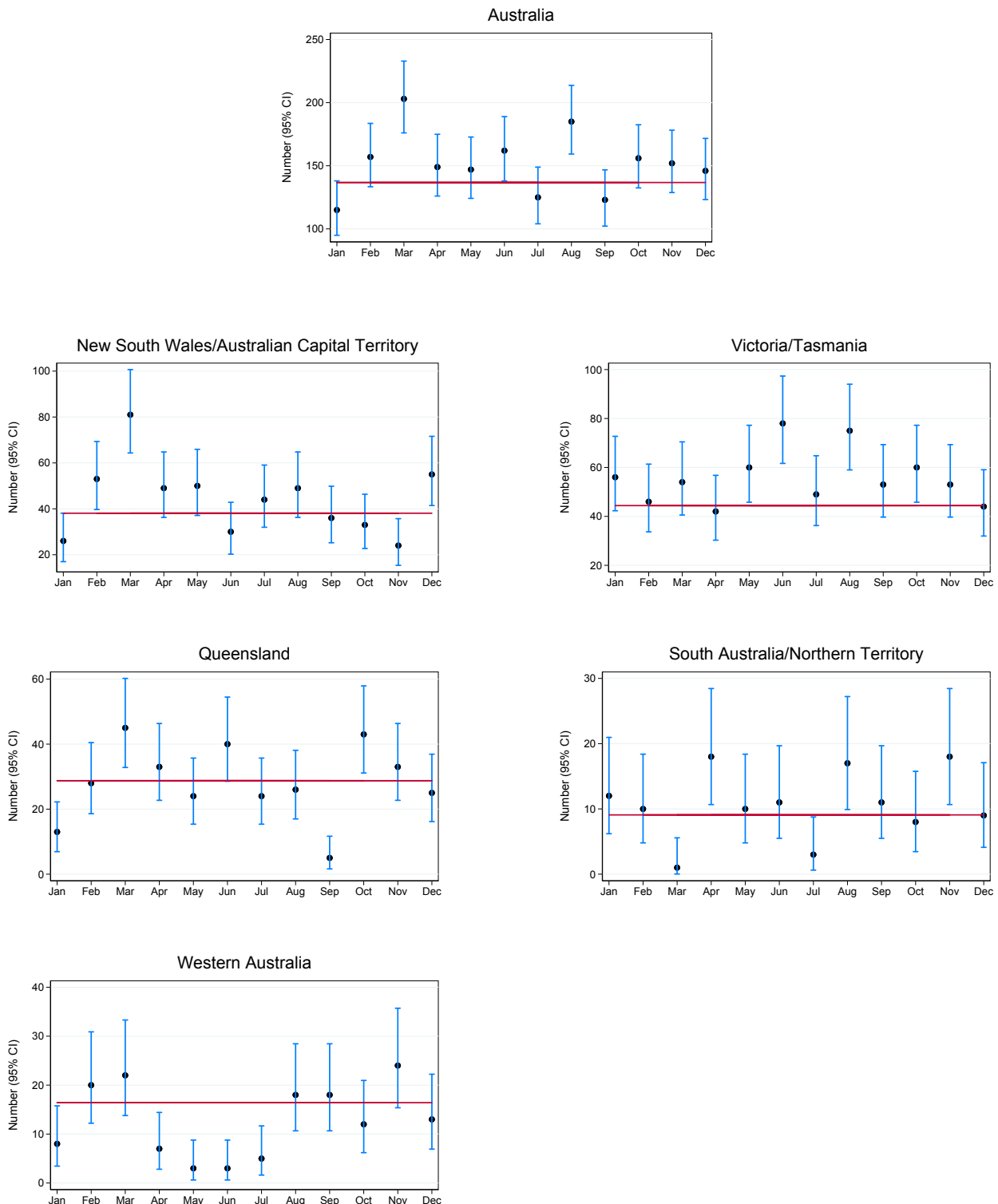
Organs Transplanted per Month from Deceased Organ Donors



*The average is calculated from the number of transplanted organs in the current month, previous month and next month; except for the most recent month which is calculated from the previous and current months.

Total Organs Transplanted per Month and 95% Confidence Intervals by Jurisdiction , 2018

The plots below illustrate month-to-month variability in the number of organs transplanted. 95% confidence intervals are exact Poisson intervals. Reference line is the 2017 monthly average. Note the different y-axis scales for each jurisdiction. Jurisdiction of donation is not related to state/territory of transplantation.



Australia and New Zealand Organ Donation Registry

Total Organs Transplanted

	Jan	Feb	Mar	Apr	May	Jun	Jul	Aug	Sep	Oct	Nov	Dec	Total
NSW	21	35	71	46	40	26	39	49	30	33	17	47	454
VIC	48	38	51	34	58	78	43	75	48	59	53	39	624
QLD	13	28	45	33	24	40	24	26	5	43	33	25	339
SA	8	10	1	16	10	11	3	11	11	6	18	9	114
WA	8	20	22	7	3	3	5	18	18	12	24	13	153
TAS	8	8	3	8	2	0	6	0	5	1	0	5	46
NT	4	0	0	2	0	0	0	6	0	2	0	0	14
ACT	5	18	10	3	10	4	5	0	6	0	7	8	76
AUSTRALIA	115	157	203	149	147	162	125	185	123	156	152	146	1820

Each organ is counted individually regardless of the type of transplant performed.^{6,7,8}

Mean Organs Transplanted Per Actual Deceased Organ Donor

	Jan	Feb	Mar	Apr	May	Jun	Jul	Aug	Sep	Oct	Nov	Dec	Total
NSW	2.1	2.7	3.9	3.3	3.3	2.6	2.6	3.1	2.7	3.0	2.1	3.6	3.0
VIC	3.0	3.8	3.0	3.4	3.2	3.5	2.7	4.4	3.2	3.7	2.5	2.6	3.2
QLD	3.3	2.8	4.1	3.7	3.4	4.0	4.0	3.7	2.5	3.6	3.7	3.6	3.6
SA	4.0	3.3	1.0	3.2	3.3	2.8	1.5	5.5	2.8	3.0	3.6	3.0	3.2
WA	4.0	5.0	4.4	3.5	3.0	3.0	5.0	3.0	3.0	4.0	3.4	4.3	3.7
TAS	4.0	2.7	3.0	4.0	2.0	0.0	6.0	0.0	5.0	1.0	0.0	2.5	3.3
NT	4.0	0.0	0.0	2.0	0.0	0.0	0.0	6.0	0.0	2.0	0.0	0.0	3.5
ACT	1.7	4.5	5.0	3.0	5.0	4.0	2.5	0.0	6.0	0.0	3.5	4.0	3.6
AUSTRALIA	2.9	3.3	3.7	3.4	3.3	3.4	2.9	3.7	3.1	3.4	2.9	3.2	3.3

Numerator = Total Organs

Denominator = Total Actual Donors (definition 1 on page 2)

Organs Transplanted by Organ Type

The following monthly totals of organs represent the number of organs transplanted. Multiple transplants are counted under each of the organs. Tables showing the number of recipients of various combinations of multiple organ transplants are shown on page 16.

Kidney

	Jan	Feb	Mar	Apr	May	Jun	Jul	Aug	Sep	Oct	Nov	Dec	Total
NSW	12	19	31	26	19	18	24	28	20	19	12	25	253
VIC	21	20	26	20	33	40	25	30	23	23	32	21	314
QLD	5	16	18	18	8	18	12	12	4	19	16	12	158
SA	3	5	0	9	6	3	2	4	6	4	9	6	57
WA	4	8	10	3	2	1	2	11	10	6	9	6	72
TAS	4	6	2	4	2	0	2	0	2	1	0	3	26
NT	2	0	0	2	0	0	0	2	0	0	0	0	6
ACT	4	7	4	2	4	2	3	0	2	0	4	4	36
AUSTRALIA	55	81	91	84	74	82	70	87	67	72	82	77	922

Single Kidney = 1 Organ Count

Double Kidney (Double adult/En bloc) = 2 Organ Counts

Liver

	Jan	Feb	Mar	Apr	May	Jun	Jul	Aug	Sep	Oct	Nov	Dec	Total
NSW	7	7	13	8	6	5	4	6	7	4	2	6	75
VIC	9	5	9	4	8	9	8	9	9	11	7	8	96
QLD	1	3	6	5	3	6	6	5	1	10	6	6	58
SA	1	2	1	3	2	4	0	2	2	0	3	0	20
WA	1	3	5	1	1	1	1	4	4	1	3	1	26
TAS	2	2	1	1	0	0	1	0	1	0	0	0	8
NT	0	0	0	0	0	0	0	1	0	0	0	0	1
ACT	0	3	2	1	1	1	1	0	1	0	2	1	13
AUSTRALIA	21	25	37	23	21	26	21	27	25	26	23	22	297

Whole Liver = 1 Organ Count, even if the liver is later split or reduced in size for transplantation.

Australia and New Zealand Organ Donation Registry

Heart

	Jan	Feb	Mar	Apr	May	Jun	Jul	Aug	Sep	Oct	Nov	Dec	Total
NSW	0	0	9	0	3	1	3	4	2	2	2	4	30
VIC	2	4	3	3	2	4	3	7	3	5	3	3	42
QLD	1	1	8	3	3	3	2	1	0	4	1	1	28
SA	0	1	0	2	1	0	1	0	0	0	1	0	6
WA	1	3	1	1	0	1	0	0	0	1	4	1	13
TAS	0	0	0	1	0	0	1	0	0	0	0	0	2
NT	0	0	0	0	0	0	0	0	0	0	0	0	0
ACT	0	3	1	0	0	1	1	0	1	0	0	1	8
AUSTRALIA	4	12	22	10	9	10	11	12	6	12	11	10	129

Heart = 1 Organ Count, Heart + Other Organ = 1 Heart Count

Lung

	Jan	Feb	Mar	Apr	May	Jun	Jul	Aug	Sep	Oct	Nov	Dec	Total
NSW	2	8	14	12	10	2	8	10	0	8	0	8	82
VIC	16	8	12	7	13	23	6	24	12	16	9	6	152
QLD	6	8	12	6	10	12	4	8	0	9	10	4	89
SA	4	2	0	2	0	4	0	4	3	2	4	2	27
WA	2	6	5	2	0	0	2	2	4	4	8	4	39
TAS	2	0	0	2	0	0	2	0	2	0	0	2	10
NT	2	0	0	0	0	0	0	2	0	2	0	0	6
ACT	1	4	2	0	4	0	0	0	2	0	0	2	15
AUSTRALIA	35	36	45	31	37	41	22	50	23	41	31	28	420

Single Lung = 1 Organ Count, Double Lung = 2 Organ Counts

Pancreas

	Jan	Feb	Mar	Apr	May	Jun	Jul	Aug	Sep	Oct	Nov	Dec	Total
NSW	0	1	4	0	2	0	0	1	1	0	1	4	14
VIC	0	1	1	0	2	2	1	4	1	4	2	1	19
QLD	0	0	1	1	0	1	0	0	0	1	0	2	6
SA	0	0	0	0	1	0	0	1	0	0	1	1	4
WA	0	0	1	0	0	0	0	1	0	0	0	1	3
TAS	0	0	0	0	0	0	0	0	0	0	0	0	0
NT	0	0	0	0	0	0	0	1	0	0	0	0	1
ACT	0	1	1	0	1	0	0	0	0	0	1	0	4
AUSTRALIA	0	3	8	1	6	3	1	8	2	5	5	9	51

Whole Pancreas = 1 Organ Count

Pancreas used for pancreas islets transplantation is excluded from this count.

Stomach Intestine

	Jan	Feb	Mar	Apr	May	Jun	Jul	Aug	Sep	Oct	Nov	Dec	Total
NSW	0	0	0	0	0	0	0	0	0	0	0	0	0
VIC	0	0	0	0	0	0	0	1	0	0	0	0	1
QLD	0	0	0	0	0	0	0	0	0	0	0	0	0
SA	0	0	0	0	0	0	0	0	0	0	0	0	0
WA	0	0	0	0	0	0	0	0	0	0	0	0	0
TAS	0	0	0	0	0	0	0	0	0	0	0	0	0
NT	0	0	0	0	0	0	0	0	0	0	0	0	0
ACT	0	0	0	0	0	0	0	0	0	0	0	0	0
AUSTRALIA	0	0	0	0	0	0	0	1	0	0	0	0	1

Stomach Intestine = 1 Organ Count

Stomach Intestine + Other Organ = 1 Organ Count

Transplantation of Organs from Deceased Organ Donors

Total Transplantation Procedures

	Jan	Feb	Mar	Apr	May	Jun	Jul	Aug	Sep	Oct	Nov	Dec	Total
NSW	20	29	67	36	37	25	33	42	30	29	15	43	406
VIC	40	36	47	31	53	66	40	64	42	53	49	36	557
QLD	10	23	39	30	20	36	20	23	5	40	28	24	298
SA	6	9	1	15	10	9	3	9	10	5	16	7	100
WA	7	17	20	6	3	3	4	17	16	10	20	11	134
TAS	7	8	3	7	2	0	5	0	4	1	0	4	41
NT	3	0	0	2	0	0	0	5	0	1	0	0	11
ACT	5	17	10	3	8	4	6	0	5	0	6	7	71
AUSTRALIA	98	139	187	130	133	143	111	160	112	139	134	132	1618

Mean Transplantation Procedures

	Jan	Feb	Mar	Apr	May	Jun	Jul	Aug	Sep	Oct	Nov	Dec	Total
NSW	2.0	2.2	3.7	2.6	3.1	2.5	2.2	2.6	2.7	2.6	1.9	3.3	2.7
VIC	2.5	3.6	2.8	3.1	2.9	3.0	2.5	3.8	2.8	3.3	2.3	2.4	2.9
QLD	2.5	2.3	3.5	3.3	2.9	3.6	3.3	3.3	2.5	3.3	3.1	3.4	3.2
SA	3.0	3.0	1.0	3.0	3.3	2.3	1.5	4.5	2.5	2.5	3.2	2.3	2.8
WA	3.5	4.3	4.0	3.0	3.0	3.0	4.0	2.8	2.7	3.3	2.9	3.7	3.3
TAS	3.5	2.7	3.0	3.5	2.0	0.0	5.0	0.0	4.0	1.0	0.0	2.0	2.9
NT	3.0	0.0	0.0	2.0	0.0	0.0	0.0	5.0	0.0	1.0	0.0	0.0	2.8
ACT	1.7	4.3	5.0	3.0	4.0	4.0	3.0	0.0	5.0	0.0	3.0	3.5	3.4
AUSTRALIA	2.5	3.0	3.4	3.0	3.0	3.0	2.6	3.2	2.8	3.0	2.6	2.9	2.9

Numerator = Total Procedures

Denominator = Total Actual Donors (definition 1 on page 2)

Multiorgan Transplantation

	Jan	Feb	Mar	Apr	May	Jun	Jul	Aug	Sep	Oct	Nov	Dec	Total
HEART+LUNGS	0	2	1	0	0	0	1	0	0	0	3	0	7
KIDNEY+HEART	1	0	0	2	1	0	0	1	0	0	0	0	5
KIDNEY+LIVER	0	2	1	0	2	1	1	0	0	0	0	2	9
KIDNEY+LUNGS	1	0	0	0	0	0	0	1	0	1	0	0	3
KIDNEY+PANCREAS	0	3	6	1	6	3	1	7	2	5	5	8	47
LIVER+LUNGS	0	0	0	0	0	0	0	1	0	0	0	0	1
LIVER+PANCREAS+INTESTINE	0	0	0	0	0	0	0	1	0	0	0	0	1
TOTAL	2	7	8	3	9	4	3	11	2	6	8	10	73

Transplantation by Organ Type

The following monthly totals represent the number of transplant procedures by organ type. Multiple organ transplantation is counted under each transplant type. (Refer to Method section on page 3).

Total Kidney Transplants

	Jan	Feb	Mar	Apr	May	Jun	Jul	Aug	Sep	Oct	Nov	Dec	Total
NSW	12	17	30	22	19	18	21	25	20	18	10	24	236
VIC	21	20	26	20	33	39	25	30	23	22	32	21	312
QLD	5	15	17	18	8	18	10	12	4	19	16	12	154
SA	3	5	0	9	6	3	2	4	6	4	9	5	56
WA	4	8	10	3	2	1	2	11	10	6	9	6	72
TAS	4	6	2	4	2	0	2	0	2	1	0	3	26
NT	2	0	0	2	0	0	0	2	0	0	0	0	6
ACT	4	7	4	2	4	2	3	0	2	0	3	4	35
AUSTRALIA	55	78	89	80	74	81	65	84	67	70	79	75	897

Single Kidney (=1), Double adult/En bloc (=1) and
Kidney + any Other Organ (=1)

Kidney (Single) Transplants

	Jan	Feb	Mar	Apr	May	Jun	Jul	Aug	Sep	Oct	Nov	Dec	Total
NSW	12	13	25	18	17	17	17	21	19	17	7	19	202
VIC	20	19	25	18	30	36	24	25	22	16	30	19	284
QLD	4	14	16	17	7	17	8	12	4	18	16	9	142
SA	3	5	0	9	4	3	2	3	6	4	8	4	51
WA	4	8	9	3	2	1	2	10	10	6	9	5	69
TAS	4	5	2	4	2	0	2	0	2	1	0	3	25
NT	2	0	0	2	0	0	0	1	0	0	0	0	5
ACT	4	6	3	2	3	2	3	0	2	0	1	4	30
AUSTRALIA	53	70	80	73	65	76	58	72	65	62	71	63	808

Kidney (Double Adult/En bloc) Transplants

	Jan	Feb	Mar	Apr	May	Jun	Jul	Aug	Sep	Oct	Nov	Dec	Total
NSW	0	2	1	4	0	0	3	3	0	1	2	1	17
VIC	0	0	0	0	0	1	0	0	0	1	0	0	2
QLD	0	1	1	0	0	0	2	0	0	0	0	0	4
SA	0	0	0	0	0	0	0	0	0	0	0	1	1
WA	0	0	0	0	0	0	0	0	0	0	0	0	0
TAS	0	0	0	0	0	0	0	0	0	0	0	0	0
NT	0	0	0	0	0	0	0	0	0	0	0	0	0
ACT	0	0	0	0	0	0	0	0	0	0	1	0	1
AUSTRALIA	0	3	2	4	0	1	5	3	0	2	3	2	25

Australia and New Zealand Organ Donation Registry

Kidney (+ any Other Organ) Transplants

Counts of multiorgan transplants utilising at least one kidney are excluded from the above counts.

	Jan	Feb	Mar	Apr	May	Jun	Jul	Aug	Sep	Oct	Nov	Dec	Total
KIDNEY+HEART	1	0	0	2	1	0	0	1	0	0	0	0	5
KIDNEY+LIVER	0	2	1	0	2	1	1	0	0	0	0	2	9
KIDNEY+LUNGS	1	0	0	0	0	0	0	1	0	1	0	0	3
KIDNEY+PANCREAS	0	3	6	1	6	3	1	7	2	5	5	8	47
TOTAL	2	5	7	3	9	4	2	9	2	6	5	10	64

Total Liver Transplants

	Jan	Feb	Mar	Apr	May	Jun	Jul	Aug	Sep	Oct	Nov	Dec	Total
NSW	7	7	17	8	8	5	5	6	7	4	2	7	83
VIC	9	6	9	4	9	9	8	9	9	13	7	8	100
QLD	1	3	6	5	4	8	6	6	1	11	6	7	64
SA	1	2	1	3	2	4	0	2	2	0	3	0	20
WA	1	3	5	1	1	1	1	4	4	1	3	1	26
TAS	2	2	1	1	0	0	1	0	1	0	0	0	8
NT	0	0	0	0	0	0	0	1	0	0	0	0	1
ACT	0	4	3	1	1	1	2	0	1	0	2	1	16
AUSTRALIA	21	27	42	23	25	28	23	28	25	29	23	24	318

Whole Liver (=1), Split Left (=1), Split Right (=1)
 Reduced Size (=1) and Liver + any Other Organ (=1)

Liver (Whole) Transplants

	Jan	Feb	Mar	Apr	May	Jun	Jul	Aug	Sep	Oct	Nov	Dec	Total
NSW	7	6	9	8	4	4	3	5	7	4	2	4	63
VIC	9	4	9	4	6	9	8	7	8	9	7	7	87
QLD	1	3	6	5	1	4	6	4	1	9	5	4	49
SA	1	2	1	3	1	4	0	2	2	0	3	0	19
WA	1	3	5	1	1	1	1	4	4	1	3	1	26
TAS	2	1	1	1	0	0	1	0	1	0	0	0	7
NT	0	0	0	0	0	0	0	1	0	0	0	0	1
ACT	0	1	1	1	1	1	0	0	1	0	2	1	9
AUSTRALIA	21	20	32	23	14	23	19	23	24	23	22	17	261

Liver (Split) Transplants

	Jan	Feb	Mar	Apr	May	Jun	Jul	Aug	Sep	Oct	Nov	Dec	Total
NSW	0	0	7	0	4	0	1	0	0	0	0	2	14
VIC	0	2	0	0	2	0	0	0	0	4	0	0	8
QLD	0	0	0	0	2	4	0	2	0	2	0	2	12
SA	0	0	0	0	0	0	0	0	0	0	0	0	0
WA	0	0	0	0	0	0	0	0	0	0	0	0	0
TAS	0	0	0	0	0	0	0	0	0	0	0	0	0
NT	0	0	0	0	0	0	0	0	0	0	0	0	0
ACT	0	2	2	0	0	0	2	0	0	0	0	0	6
AUSTRALIA	0	4	9	0	8	4	3	2	0	6	0	4	40

Australia and New Zealand Organ Donation Registry

Liver (Reduced Size) Transplants

	Jan	Feb	Mar	Apr	May	Jun	Jul	Aug	Sep	Oct	Nov	Dec	Total
NSW	0	0	0	0	0	0	0	0	0	0	0	1	1
VIC	0	0	0	0	0	0	0	1	1	0	0	0	2
QLD	0	0	0	0	1	0	0	0	0	0	1	0	2
SA	0	0	0	0	0	0	0	0	0	0	0	0	0
WA	0	0	0	0	0	0	0	0	0	0	0	0	0
TAS	0	0	0	0	0	0	0	0	0	0	0	0	0
NT	0	0	0	0	0	0	0	0	0	0	0	0	0
ACT	0	1	0	0	0	0	0	0	0	0	0	0	1
AUSTRALIA	0	1	0	0	1	0	0	1	1	0	1	1	6

Liver (+ any Other Organ) Transplants

Counts of multiorgan transplants utilising a liver are excluded from the above counts.

	Jan	Feb	Mar	Apr	May	Jun	Jul	Aug	Sep	Oct	Nov	Dec	Total
LIVER+KIDNEY	0	2	1	0	2	1	1	0	0	0	0	2	9
LIVER+LUNGS	0	0	0	0	0	0	0	1	0	0	0	0	1
LIVER+PANCREAS+INTESTINE	0	0	0	0	0	0	0	1	0	0	0	0	1
TOTAL	0	2	1	0	2	1	1	2	0	0	0	2	11

Australia and New Zealand Organ Donation Registry

Total Heart Transplants

	Jan	Feb	Mar	Apr	May	Jun	Jul	Aug	Sep	Oct	Nov	Dec	Total
NSW	0	0	9	0	3	1	3	4	2	2	2	4	30
VIC	2	4	3	3	2	4	3	7	3	5	3	3	42
QLD	1	1	8	3	3	3	2	1	0	4	1	1	28
SA	0	1	0	2	1	0	1	0	0	0	1	0	6
WA	1	3	1	1	0	1	0	0	0	1	4	1	13
TAS	0	0	0	1	0	0	1	0	0	0	0	0	2
NT	0	0	0	0	0	0	0	0	0	0	0	0	0
ACT	0	3	1	0	0	1	1	0	1	0	0	1	8
AUSTRALIA	4	12	22	10	9	10	11	12	6	12	11	10	129

Heart only (=1) and Heart + any Other Organ (=1)

Heart (Only) Transplants

	Jan	Feb	Mar	Apr	May	Jun	Jul	Aug	Sep	Oct	Nov	Dec	Total
NSW	0	0	9	0	3	1	3	4	2	2	2	4	30
VIC	2	4	3	1	2	4	3	6	3	5	3	3	39
QLD	0	0	7	3	2	3	1	1	0	4	1	1	23
SA	0	1	0	2	1	0	1	0	0	0	0	0	5
WA	1	2	1	1	0	1	0	0	0	1	2	1	10
TAS	0	0	0	1	0	0	1	0	0	0	0	0	2
NT	0	0	0	0	0	0	0	0	0	0	0	0	0
ACT	0	3	1	0	0	1	1	0	1	0	0	1	8
AUSTRALIA	3	10	21	8	8	10	10	11	6	12	8	10	117

Heart (+ any Other Organ) Transplants

Counts of multiorgan transplants utilising a heart are excluded from the above counts.

	Jan	Feb	Mar	Apr	May	Jun	Jul	Aug	Sep	Oct	Nov	Dec	Total
HEART+KIDNEY	1	0	0	2	1	0	0	1	0	0	0	0	5
HEART+LUNGS	0	2	1	0	0	0	1	0	0	0	3	0	7
TOTAL	1	2	1	2	1	0	1	1	0	0	3	0	12

Total Lung Transplants

	Jan	Feb	Mar	Apr	May	Jun	Jul	Aug	Sep	Oct	Nov	Dec	Total
NSW	1	4	7	6	5	1	4	6	0	5	0	4	43
VIC	8	5	8	4	7	12	3	13	6	9	5	3	83
QLD	3	4	7	3	5	6	2	4	0	5	5	2	46
SA	2	1	0	1	0	2	0	2	2	1	2	1	14
WA	1	3	3	1	0	0	1	1	2	2	4	2	20
TAS	1	0	0	1	0	0	1	0	1	0	0	1	5
NT	1	0	0	0	0	0	0	1	0	1	0	0	3
ACT	1	2	1	0	2	0	0	0	1	0	0	1	8
AUSTRALIA	18	19	26	16	19	21	11	27	12	23	16	14	222

Single Lung (=1), Double Lung (=1), Single Lung + any Other Organ (=1),
Double Lung + any Other Organ (=1)

Lung (Double) Transplants

	Jan	Feb	Mar	Apr	May	Jun	Jul	Aug	Sep	Oct	Nov	Dec	Total
NSW	1	4	7	6	5	1	4	3	0	3	0	4	38
VIC	7	3	4	3	6	11	3	10	6	6	4	3	66
QLD	3	3	4	3	5	6	1	4	0	4	5	2	40
SA	2	1	0	1	0	2	0	2	1	1	1	1	12
WA	1	2	2	1	0	0	1	1	2	2	2	2	16
TAS	1	0	0	1	0	0	1	0	1	0	0	1	5
NT	1	0	0	0	0	0	0	1	0	1	0	0	3
ACT	0	2	1	0	2	0	0	0	1	0	0	1	7
AUSTRALIA	16	15	18	15	18	20	10	21	11	17	12	14	187

Lung (Single) Transplants

	Jan	Feb	Mar	Apr	May	Jun	Jul	Aug	Sep	Oct	Nov	Dec	Total
NSW	0	0	0	0	0	0	0	2	0	2	0	0	4
VIC	0	2	4	1	1	1	0	2	0	2	1	0	14
QLD	0	0	2	0	0	0	0	0	0	1	0	0	3
SA	0	0	0	0	0	0	0	0	1	0	0	0	1
WA	0	0	1	0	0	0	0	0	0	0	0	0	1
TAS	0	0	0	0	0	0	0	0	0	0	0	0	0
NT	0	0	0	0	0	0	0	0	0	0	0	0	0
ACT	1	0	0	0	0	0	0	0	0	0	0	0	1
AUSTRALIA	1	2	7	1	1	1	0	4	1	5	1	0	24

Australia and New Zealand Organ Donation Registry

Lung (+ any Other Organ) Transplants

Counts of multiorgan transplants utilising at least one lung are excluded from the above counts.

	Jan	Feb	Mar	Apr	May	Jun	Jul	Aug	Sep	Oct	Nov	Dec	Total
LUNGS+HEART	0	2	1	0	0	0	1	0	0	0	3	0	7
LUNGS+KIDNEY	1	0	0	0	0	0	0	1	0	1	0	0	3
LUNGS+LIVER	0	0	0	0	0	0	0	1	0	0	0	0	1
TOTAL	1	2	1	0	0	0	1	2	0	1	3	0	11

Australia and New Zealand Organ Donation Registry

Total Pancreas Transplants

	Jan	Feb	Mar	Apr	May	Jun	Jul	Aug	Sep	Oct	Nov	Dec	Total
NSW	0	1	4	0	2	0	0	1	1	0	1	4	14
VIC	0	1	1	0	2	2	1	4	1	4	2	1	19
QLD	0	0	1	1	0	1	0	0	0	1	0	2	6
SA	0	0	0	0	1	0	0	1	0	0	1	1	4
WA	0	0	1	0	0	0	0	1	0	0	0	1	3
TAS	0	0	0	0	0	0	0	0	0	0	0	0	0
NT	0	0	0	0	0	0	0	1	0	0	0	0	1
ACT	0	1	1	0	1	0	0	0	0	0	1	0	4
AUSTRALIA	0	3	8	1	6	3	1	8	2	5	5	9	51

Whole Pancreas (=1) and Pancreas + any Other Organ (=1)

Pancreas (Whole) Transplants

	Jan	Feb	Mar	Apr	May	Jun	Jul	Aug	Sep	Oct	Nov	Dec	Total
NSW	0	0	1	0	0	0	0	0	0	0	0	0	1
VIC	0	0	0	0	0	0	0	0	0	0	0	0	0
QLD	0	0	1	0	0	0	0	0	0	0	0	0	1
SA	0	0	0	0	0	0	0	0	0	0	0	1	1
WA	0	0	0	0	0	0	0	0	0	0	0	0	0
TAS	0	0	0	0	0	0	0	0	0	0	0	0	0
NT	0	0	0	0	0	0	0	0	0	0	0	0	0
ACT	0	0	0	0	0	0	0	0	0	0	0	0	0
AUSTRALIA	0	0	2	0	0	0	0	0	0	0	0	1	3

Pancreas (+ any Other Organ) Transplants

Counts of multiorgan transplants utilising a pancreas are excluded from the above counts.

	Jan	Feb	Mar	Apr	May	Jun	Jul	Aug	Sep	Oct	Nov	Dec	Total
PANCREAS+KIDNEY	0	3	6	1	6	3	1	7	2	5	5	8	47
PANCREAS+LIVER+INTESTINE	0	0	0	0	0	0	0	1	0	0	0	0	1
TOTAL	0	3	6	1	6	3	1	8	2	5	5	8	48

Total Stomach Intestine Transplant Recipients

	Jan	Feb	Mar	Apr	May	Jun	Jul	Aug	Sep	Oct	Nov	Dec	Total
NSW	0	0	0	0	0	0	0	0	0	0	0	0	0
VIC	0	0	0	0	0	0	0	1	0	0	0	0	1
QLD	0	0	0	0	0	0	0	0	0	0	0	0	0
SA	0	0	0	0	0	0	0	0	0	0	0	0	0
WA	0	0	0	0	0	0	0	0	0	0	0	0	0
TAS	0	0	0	0	0	0	0	0	0	0	0	0	0
NT	0	0	0	0	0	0	0	0	0	0	0	0	0
ACT	0	0	0	0	0	0	0	0	0	0	0	0	0
AUSTRALIA	0	0	0	0	0	0	0	1	0	0	0	0	1

Stomach Intestine (=1) and Stomach Intestine + any Other Organ (=1)

Stomach Intestine (+ any Other Organ) Transplants

Counts of multiorgan transplants utilising a stomach intestine are included in above counts.

	Jan	Feb	Mar	Apr	May	Jun	Jul	Aug	Sep	Oct	Nov	Dec	Total
LIVER+PANCREAS+INTESTINE	0	0	0	0	0	0	0	1	0	0	0	0	1
TOTAL	0	0	0	0	0	0	0	1	0	0	0	0	1

Activity Summary: Donation Following Circulatory Death

(See definition 2 on page 2)

Actual Organ Donors following Circulatory Death

Actual deceased organ donors according to definition 1 on page 2.

	Jan	Feb	Mar	Apr	May	Jun	Jul	Aug	Sep	Oct	Nov	Dec	Total
NSW	2	9	1	5	4	5	7	6	3	0	1	3	46
VIC	5	1	7	4	6	9	6	3	4	3	11	4	63
QLD	2	5	2	2	1	1	2	1	0	1	2	2	21
SA	2	1	0	1	0	0	1	0	2	2	1	0	10
WA	1	0	0	1	0	0	0	0	0	0	0	2	4
TAS	0	1	0	0	1	0	0	0	0	0	0	1	3
NT	0	0	0	1	0	0	0	0	0	0	0	0	1
ACT	1	1	0	0	2	0	0	1	0	0	0	1	6
AUSTRALIA	13	18	10	14	14	15	16	11	9	6	15	13	154

Transplant Recipients from Donors following Circulatory Death

The following monthly totals represent the number of transplant recipients from deceased organ donors following circulatory death.

	Jan	Feb	Mar	Apr	May	Jun	Jul	Aug	Sep	Oct	Nov	Dec	Total
NSW	2	15	5	11	10	11	13	15	6	0	2	6	96
VIC	12	2	14	9	11	20	12	4	9	6	20	7	126
QLD	3	12	7	5	1	1	7	3	0	5	6	4	54
SA	6	2	0	1	0	0	2	0	4	5	3	0	23
WA	2	0	0	1	0	0	0	0	0	0	0	5	8
TAS	0	2	0	0	2	0	0	0	0	0	0	3	7
NT	0	0	0	2	0	0	0	0	0	0	0	0	2
ACT	2	4	0	0	7	0	0	0	0	0	0	2	15
AUSTRALIA	27	37	26	29	31	32	34	22	19	16	31	27	331

Recipients transplanted with one or more organs are counted as one.

Organs Transplanted from Donors following Circulatory Death

The following monthly totals of organs represent the number of organs transplanted from deceased donors following circulatory death.

	Jan	Feb	Mar	Apr	May	Jun	Jul	Aug	Sep	Oct	Nov	Dec	Total
NSW	2	18	6	14	11	13	16	17	6	0	2	6	111
VIC	15	2	16	10	12	24	13	5	11	9	22	9	148
QLD	4	16	9	6	2	2	8	4	0	6	7	5	69
SA	8	2	0	1	0	0	2	0	5	6	3	0	27
WA	2	0	0	1	0	0	0	0	0	0	0	6	9
TAS	0	2	0	0	2	0	0	0	0	0	0	4	8
NT	0	0	0	2	0	0	0	0	0	0	0	0	2
ACT	2	5	0	0	10	0	0	0	0	0	0	2	19
AUSTRALIA	33	45	31	34	37	39	39	26	22	21	34	32	393

Each organ is counted individually regardless of the type of transplantation performed.

Organs Transplanted by Organ Type from Donors following Circulatory Death

Kidney

	Jan	Feb	Mar	Apr	May	Jun	Jul	Aug	Sep	Oct	Nov	Dec	Total
NSW	2	11	2	10	7	10	10	11	6	0	2	6	77
VIC	8	2	10	8	10	16	11	3	7	5	16	5	101
QLD	2	10	4	4	0	0	4	2	0	2	4	4	36
SA	3	2	0	1	0	0	2	0	2	4	2	0	16
WA	2	0	0	1	0	0	0	0	0	0	0	4	7
TAS	0	2	0	0	2	0	0	0	0	0	0	2	6
NT	0	0	0	2	0	0	0	0	0	0	0	0	2
ACT	2	2	0	0	4	0	0	0	0	0	0	2	10
AUSTRALIA	19	29	16	26	23	26	27	16	15	11	24	23	255

Single Kidney = 1 Organ Count

Double Kidney (Double adult/En bloc) = 2 Organ Counts

Liver

	Jan	Feb	Mar	Apr	May	Jun	Jul	Aug	Sep	Oct	Nov	Dec	Total
NSW	0	3	1	2	1	1	1	0	0	0	0	0	9
VIC	1	0	0	0	0	0	1	0	0	0	1	0	3
QLD	0	0	0	0	0	0	2	0	0	1	1	1	5
SA	1	0	0	0	0	0	0	0	0	0	1	0	2
WA	0	0	0	0	0	0	0	0	0	0	0	0	0
TAS	0	0	0	0	0	0	0	0	0	0	0	0	0
NT	0	0	0	0	0	0	0	0	0	0	0	0	0
ACT	0	0	0	0	1	0	0	0	0	0	0	0	1
AUSTRALIA	2	3	1	2	2	1	4	0	0	1	3	1	20

Whole Liver = 1 Organ Count, even if the liver is later split or reduced in size for transplantation.

Heart

	Jan	Feb	Mar	Apr	May	Jun	Jul	Aug	Sep	Oct	Nov	Dec	Total
NSW	0	0	1	0	1	0	1	2	0	0	0	0	5
VIC	0	0	0	0	0	0	0	0	0	0	0	0	0
QLD	0	0	1	0	0	0	0	0	0	1	0	0	2
SA	0	0	0	0	0	0	0	0	0	0	0	0	0
WA	0	0	0	0	0	0	0	0	0	0	0	0	0
TAS	0	0	0	0	0	0	0	0	0	0	0	0	0
NT	0	0	0	0	0	0	0	0	0	0	0	0	0
ACT	0	1	0	0	0	0	0	0	0	0	0	0	1
AUSTRALIA	0	1	2	0	1	0	1	2	0	1	0	0	8

Heart = 1 Organ Count, Heart + Other Organ = 1 Heart Count

Australia and New Zealand Organ Donation Registry

Lung

	Jan	Feb	Mar	Apr	May	Jun	Jul	Aug	Sep	Oct	Nov	Dec	Total
NSW	0	4	2	2	2	2	4	4	0	0	0	0	20
VIC	6	0	6	2	2	8	0	2	4	4	5	4	43
QLD	2	6	4	2	2	2	2	2	0	2	2	0	26
SA	4	0	0	0	0	0	0	0	3	2	0	0	9
WA	0	0	0	0	0	0	0	0	0	0	0	2	2
TAS	0	0	0	0	0	0	0	0	0	0	0	2	2
NT	0	0	0	0	0	0	0	0	0	0	0	0	0
ACT	0	2	0	0	4	0	0	0	0	0	0	0	6
AUSTRALIA	12	12	12	6	10	12	6	8	7	8	7	8	108

Single Lung = 1 Organ Count, Double Lung = 2 Organ Counts

Pancreas

	Jan	Feb	Mar	Apr	May	Jun	Jul	Aug	Sep	Oct	Nov	Dec	Total
NSW	0	0	0	0	0	0	0	0	0	0	0	0	0
VIC	0	0	0	0	0	0	1	0	0	0	0	0	1
QLD	0	0	0	0	0	0	0	0	0	0	0	0	0
SA	0	0	0	0	0	0	0	0	0	0	0	0	0
WA	0	0	0	0	0	0	0	0	0	0	0	0	0
TAS	0	0	0	0	0	0	0	0	0	0	0	0	0
NT	0	0	0	0	0	0	0	0	0	0	0	0	0
ACT	0	0	0	0	1	0	0	0	0	0	0	0	1
AUSTRALIA	0	0	0	0	1	0	1	0	0	0	0	0	2

Whole Pancreas = 1 Organ Count

Pancreas used for pancreas islets transplantation is excluded from this count.

Stomach Intestine

	Jan	Feb	Mar	Apr	May	Jun	Jul	Aug	Sep	Oct	Nov	Dec	Total
NSW	0	0	0	0	0	0	0	0	0	0	0	0	0
VIC	0	0	0	0	0	0	0	0	0	0	0	0	0
QLD	0	0	0	0	0	0	0	0	0	0	0	0	0
SA	0	0	0	0	0	0	0	0	0	0	0	0	0
WA	0	0	0	0	0	0	0	0	0	0	0	0	0
TAS	0	0	0	0	0	0	0	0	0	0	0	0	0
NT	0	0	0	0	0	0	0	0	0	0	0	0	0
ACT	0	0	0	0	0	0	0	0	0	0	0	0	0
AUSTRALIA	0	0	0	0	0	0	0	0	0	0	0	0	0

Stomach Intestine = 1 Organ Count

Stomach Intestine + Other Organ = 1 Organ Count

Australia and New Zealand Organ Donation Registry

Transplantation of Organs from Donors following Circulatory Death

Total Transplantation Procedures

	Jan	Feb	Mar	Apr	May	Jun	Jul	Aug	Sep	Oct	Nov	Dec	Total
NSW	2	15	5	11	10	12	13	15	6	0	2	6	97
VIC	12	2	14	9	11	20	13	4	9	6	20	7	127
QLD	3	12	7	5	1	1	7	3	0	5	6	5	55
SA	6	2	0	1	0	0	2	0	4	5	3	0	23
WA	2	0	0	1	0	0	0	0	0	0	0	5	8
TAS	0	2	0	0	2	0	0	0	0	0	0	3	7
NT	0	0	0	2	0	0	0	0	0	0	0	0	2
ACT	2	4	0	0	8	0	0	0	0	0	0	2	16
AUSTRALIA	27	37	26	29	32	33	35	22	19	16	31	28	335

Transplantation by Organ Type from Donors following Circulatory Death

Total Kidney Transplants

	Jan	Feb	Mar	Apr	May	Jun	Jul	Aug	Sep	Oct	Nov	Dec	Total
NSW	2	10	2	8	7	10	9	11	6	0	2	6	73
VIC	8	2	10	8	10	16	11	3	7	4	16	5	100
QLD	2	9	4	4	0	0	4	2	0	2	4	4	35
SA	3	2	0	1	0	0	2	0	2	4	2	0	16
WA	2	0	0	1	0	0	0	0	0	0	0	4	7
TAS	0	2	0	0	2	0	0	0	0	0	0	2	6
NT	0	0	0	2	0	0	0	0	0	0	0	0	2
ACT	2	2	0	0	4	0	0	0	0	0	0	2	10
AUSTRALIA	19	27	16	24	23	26	26	16	15	10	24	23	249

Single Kidney (=1), Double adult/En bloc (=1) and
Kidney + any Other Organ (=1)

Kidney (Single) Transplants

	Jan	Feb	Mar	Apr	May	Jun	Jul	Aug	Sep	Oct	Nov	Dec	Total
NSW	2	9	2	6	7	9	8	11	6	0	2	6	68
VIC	8	2	10	8	10	16	10	3	7	3	16	5	98
QLD	2	8	4	4	0	0	4	2	0	2	4	3	33
SA	3	2	0	1	0	0	2	0	2	4	2	0	16
WA	2	0	0	1	0	0	0	0	0	0	0	4	7
TAS	0	2	0	0	2	0	0	0	0	0	0	2	6
NT	0	0	0	2	0	0	0	0	0	0	0	0	2
ACT	2	2	0	0	3	0	0	0	0	0	0	2	9
AUSTRALIA	19	25	16	22	22	25	24	16	15	9	24	22	239

Australia and New Zealand Organ Donation Registry

Kidney (Double Adult/En bloc) Transplants

	Jan	Feb	Mar	Apr	May	Jun	Jul	Aug	Sep	Oct	Nov	Dec	Total
NSW	0	1	0	2	0	0	1	0	0	0	0	0	4
VIC	0	0	0	0	0	0	0	0	0	1	0	0	1
QLD	0	1	0	0	0	0	0	0	0	0	0	0	1
SA	0	0	0	0	0	0	0	0	0	0	0	0	0
WA	0	0	0	0	0	0	0	0	0	0	0	0	0
TAS	0	0	0	0	0	0	0	0	0	0	0	0	0
NT	0	0	0	0	0	0	0	0	0	0	0	0	0
ACT	0	0	0	0	0	0	0	0	0	0	0	0	0
AUSTRALIA	0	2	0	2	0	0	1	0	0	1	0	0	6

Kidney (+ any Other Organ) Transplants

Counts of multiorgan transplants utilising at least one kidney are excluded from the above counts.

	Jan	Feb	Mar	Apr	May	Jun	Jul	Aug	Sep	Oct	Nov	Dec	Total
KIDNEY+LIVER	0	0	0	0	0	1	0	0	0	0	0	1	2
KIDNEY+PANCREAS	0	0	0	0	1	0	1	0	0	0	0	0	2
TOTAL	0	0	0	0	1	1	1	0	0	0	0	1	4

Australia and New Zealand Organ Donation Registry

Total Liver Transplants

	Jan	Feb	Mar	Apr	May	Jun	Jul	Aug	Sep	Oct	Nov	Dec	Total
NSW	0	3	1	2	1	1	1	0	0	0	0	0	9
VIC	1	0	0	0	0	0	1	0	0	0	1	0	3
QLD	0	0	0	0	0	0	2	0	0	1	1	1	5
SA	1	0	0	0	0	0	0	0	0	0	1	0	2
WA	0	0	0	0	0	0	0	0	0	0	0	0	0
TAS	0	0	0	0	0	0	0	0	0	0	0	0	0
NT	0	0	0	0	0	0	0	0	0	0	0	0	0
ACT	0	0	0	0	1	0	0	0	0	0	0	0	1
AUSTRALIA	2	3	1	2	2	1	4	0	0	1	3	1	20

Whole Liver (=1), Split Left (=1), Split Right (=1)

Reduced Size (=1) and Liver + any Other Organ (=1)

Liver (Whole) Transplants

	Jan	Feb	Mar	Apr	May	Jun	Jul	Aug	Sep	Oct	Nov	Dec	Total
NSW	0	3	1	2	1	0	1	0	0	0	0	0	8
VIC	1	0	0	0	0	0	1	0	0	0	1	0	3
QLD	0	0	0	0	0	0	2	0	0	1	1	0	4
SA	1	0	0	0	0	0	0	0	0	0	1	0	2
WA	0	0	0	0	0	0	0	0	0	0	0	0	0
TAS	0	0	0	0	0	0	0	0	0	0	0	0	0
NT	0	0	0	0	0	0	0	0	0	0	0	0	0
ACT	0	0	0	0	1	0	0	0	0	0	0	0	1
AUSTRALIA	2	3	1	2	2	0	4	0	0	1	3	0	18

Liver (Split) Transplants

	Jan	Feb	Mar	Apr	May	Jun	Jul	Aug	Sep	Oct	Nov	Dec	Total
NSW	0	0	0	0	0	0	0	0	0	0	0	0	0
VIC	0	0	0	0	0	0	0	0	0	0	0	0	0
QLD	0	0	0	0	0	0	0	0	0	0	0	0	0
SA	0	0	0	0	0	0	0	0	0	0	0	0	0
WA	0	0	0	0	0	0	0	0	0	0	0	0	0
TAS	0	0	0	0	0	0	0	0	0	0	0	0	0
NT	0	0	0	0	0	0	0	0	0	0	0	0	0
ACT	0	0	0	0	0	0	0	0	0	0	0	0	0
AUSTRALIA	0	0	0	0	0	0	0	0	0	0	0	0	0

Australia and New Zealand Organ Donation Registry

Liver (Reduced Size) Transplants

	Jan	Feb	Mar	Apr	May	Jun	Jul	Aug	Sep	Oct	Nov	Dec	Total
NSW	0	0	0	0	0	0	0	0	0	0	0	0	0
VIC	0	0	0	0	0	0	0	0	0	0	0	0	0
QLD	0	0	0	0	0	0	0	0	0	0	0	0	0
SA	0	0	0	0	0	0	0	0	0	0	0	0	0
WA	0	0	0	0	0	0	0	0	0	0	0	0	0
TAS	0	0	0	0	0	0	0	0	0	0	0	0	0
NT	0	0	0	0	0	0	0	0	0	0	0	0	0
ACT	0	0	0	0	0	0	0	0	0	0	0	0	0
AUSTRALIA	0	0	0	0	0	0	0	0	0	0	0	0	0

Liver (+ any Other Organ) Transplants

Counts of multiorgan transplants utilising a liver are excluded from the above counts.

	Jan	Feb	Mar	Apr	May	Jun	Jul	Aug	Sep	Oct	Nov	Dec	Total
LIVER+KIDNEY	0	0	0	0	0	1	0	0	0	0	0	1	2
TOTAL	0	0	0	0	0	1	0	0	0	0	0	1	2

Australia and New Zealand Organ Donation Registry

Total Heart Transplants

	Jan	Feb	Mar	Apr	May	Jun	Jul	Aug	Sep	Oct	Nov	Dec	Total
NSW	0	0	1	0	1	0	1	2	0	0	0	0	5
VIC	0	0	0	0	0	0	0	0	0	0	0	0	0
QLD	0	0	1	0	0	0	0	0	0	1	0	0	2
SA	0	0	0	0	0	0	0	0	0	0	0	0	0
WA	0	0	0	0	0	0	0	0	0	0	0	0	0
TAS	0	0	0	0	0	0	0	0	0	0	0	0	0
NT	0	0	0	0	0	0	0	0	0	0	0	0	0
ACT	0	1	0	0	0	0	0	0	0	0	0	0	1
AUSTRALIA	0	1	2	0	1	0	1	2	0	1	0	0	8

Heart only (=1) and Heart + any Other Organ (=1)

Heart (Only) Transplants

	Jan	Feb	Mar	Apr	May	Jun	Jul	Aug	Sep	Oct	Nov	Dec	Total
NSW	0	0	1	0	1	0	1	2	0	0	0	0	5
VIC	0	0	0	0	0	0	0	0	0	0	0	0	0
QLD	0	0	1	0	0	0	0	0	0	1	0	0	2
SA	0	0	0	0	0	0	0	0	0	0	0	0	0
WA	0	0	0	0	0	0	0	0	0	0	0	0	0
TAS	0	0	0	0	0	0	0	0	0	0	0	0	0
NT	0	0	0	0	0	0	0	0	0	0	0	0	0
ACT	0	1	0	0	0	0	0	0	0	0	0	0	1
AUSTRALIA	0	1	2	0	1	0	1	2	0	1	0	0	8

Total Lung Transplants

	Jan	Feb	Mar	Apr	May	Jun	Jul	Aug	Sep	Oct	Nov	Dec	Total
NSW	0	2	1	1	1	1	2	2	0	0	0	0	10
VIC	3	0	4	1	1	4	0	1	2	2	3	2	23
QLD	1	3	2	1	1	1	1	1	0	1	1	0	13
SA	2	0	0	0	0	0	0	0	2	1	0	0	5
WA	0	0	0	0	0	0	0	0	0	0	0	1	1
TAS	0	0	0	0	0	0	0	0	0	0	0	1	1
NT	0	0	0	0	0	0	0	0	0	0	0	0	0
ACT	0	1	0	0	2	0	0	0	0	0	0	0	3
AUSTRALIA	6	6	7	3	5	6	3	4	4	4	4	4	56

Single Lung (=1), Double Lung (=1), Single Lung + any Other Organ (=1),
 Double Lung + any Other Organ (=1)

Lung (Double) Transplants

	Jan	Feb	Mar	Apr	May	Jun	Jul	Aug	Sep	Oct	Nov	Dec	Total
NSW	0	2	1	1	1	1	2	2	0	0	0	0	10
VIC	3	0	2	1	1	4	0	1	2	2	2	2	20
QLD	1	3	2	1	1	1	1	1	0	1	1	0	13
SA	2	0	0	0	0	0	0	0	1	1	0	0	4
WA	0	0	0	0	0	0	0	0	0	0	0	1	1
TAS	0	0	0	0	0	0	0	0	0	0	0	1	1
NT	0	0	0	0	0	0	0	0	0	0	0	0	0
ACT	0	1	0	0	2	0	0	0	0	0	0	0	3
AUSTRALIA	6	6	5	3	5	6	3	4	3	4	3	4	52

Lung (Single) Transplants

	Jan	Feb	Mar	Apr	May	Jun	Jul	Aug	Sep	Oct	Nov	Dec	Total
NSW	0	0	0	0	0	0	0	0	0	0	0	0	0
VIC	0	0	2	0	0	0	0	0	0	0	1	0	3
QLD	0	0	0	0	0	0	0	0	0	0	0	0	0
SA	0	0	0	0	0	0	0	0	1	0	0	0	1
WA	0	0	0	0	0	0	0	0	0	0	0	0	0
TAS	0	0	0	0	0	0	0	0	0	0	0	0	0
NT	0	0	0	0	0	0	0	0	0	0	0	0	0
ACT	0	0	0	0	0	0	0	0	0	0	0	0	0
AUSTRALIA	0	0	2	0	0	0	0	0	1	0	1	0	4

Australia and New Zealand Organ Donation Registry

Total Pancreas Transplants

	Jan	Feb	Mar	Apr	May	Jun	Jul	Aug	Sep	Oct	Nov	Dec	Total
NSW	0	0	0	0	0	0	0	0	0	0	0	0	0
VIC	0	0	0	0	0	0	1	0	0	0	0	0	1
QLD	0	0	0	0	0	0	0	0	0	0	0	0	0
SA	0	0	0	0	0	0	0	0	0	0	0	0	0
WA	0	0	0	0	0	0	0	0	0	0	0	0	0
TAS	0	0	0	0	0	0	0	0	0	0	0	0	0
NT	0	0	0	0	0	0	0	0	0	0	0	0	0
ACT	0	0	0	0	1	0	0	0	0	0	0	0	1
AUSTRALIA	0	0	0	0	1	0	1	0	0	0	0	0	2

Whole Pancreas (=1) and Pancreas + any Other Organ (=1)

Pancreas (Whole) Transplants

	Jan	Feb	Mar	Apr	May	Jun	Jul	Aug	Sep	Oct	Nov	Dec	Total
NSW	0	0	0	0	0	0	0	0	0	0	0	0	0
VIC	0	0	0	0	0	0	0	0	0	0	0	0	0
QLD	0	0	0	0	0	0	0	0	0	0	0	0	0
SA	0	0	0	0	0	0	0	0	0	0	0	0	0
WA	0	0	0	0	0	0	0	0	0	0	0	0	0
TAS	0	0	0	0	0	0	0	0	0	0	0	0	0
NT	0	0	0	0	0	0	0	0	0	0	0	0	0
ACT	0	0	0	0	0	0	0	0	0	0	0	0	0
AUSTRALIA	0	0	0	0	0	0	0	0	0	0	0	0	0

Pancreas (+ any Other Organ) Transplants

Counts of multiorgan transplants utilising a pancreas are included in the above counts.

	Jan	Feb	Mar	Apr	May	Jun	Jul	Aug	Sep	Oct	Nov	Dec	Total
PANCREAS+KIDNEY	0	0	0	0	1	0	1	0	0	0	0	0	2
TOTAL	0	0	0	0	1	0	1	0	0	0	0	0	2

Total Stomach Intestine Transplants

	Jan	Feb	Mar	Apr	May	Jun	Jul	Aug	Sep	Oct	Nov	Dec	Total
NSW	0	0	0	0	0	0	0	0	0	0	0	0	0
VIC	0	0	0	0	0	0	0	0	0	0	0	0	0
QLD	0	0	0	0	0	0	0	0	0	0	0	0	0
SA	0	0	0	0	0	0	0	0	0	0	0	0	0
WA	0	0	0	0	0	0	0	0	0	0	0	0	0
TAS	0	0	0	0	0	0	0	0	0	0	0	0	0
NT	0	0	0	0	0	0	0	0	0	0	0	0	0
ACT	0	0	0	0	0	0	0	0	0	0	0	0	0
AUSTRALIA	0	0	0	0	0	0	0	0	0	0	0	0	0

Stomach Intestine (=1) and Stomach Intestine + any Other Organ (=1)