



Monthly Report on Deceased Organ Donation in Australia

December 2016

Produced 8 February 2017 10:36 AM
Data Received by ANZOD up to 7 February 2017

Contents

Explanatory notes	2
Definitions	2
Notes	2
Method	3
References	3
Deceased Organ Donation	4
Total Actual Deceased Organ Donors	6
Multiorgan Deceased Donors	6
Intended Deceased Organ Donors	6
Transplant Recipients from Deceased Organ Donors	7
Total Transplant Recipients from Deceased Organ Donors	9
Mean Transplant Recipients Per Actual Deceased Organ Donor	9
Recipients of Multiple Organs	9
Organs Transplanted from Deceased Organ Donors	10
Total Organs Transplanted	12
Mean Organs Transplanted Per Actual Deceased Organ Donor	12
Organs Transplanted by Organ Type	13
Transplantation of Organs from Deceased Organ Donors	16
Total Transplantation Procedures	16
Mean Transplantation Procedures	16
Multiorgan Transplantation	16
Transplantation by Organ Type	17
Activity Summary: Donation Following Circulatory Death	26
Actual Organ Donors following Circulatory Death	26
Transplant Recipients from Donors following Circulatory Death	26
Organs Transplanted from Donors following Circulatory Death	26
Organs Transplanted by Organ Type from Donors following Circulatory Death	27
Transplantation of Organs from Donors following Circulatory Death	29
Transplantation by Organ Type from Donors following Circulatory Death	29

Explanatory notes

Definitions

- 1 Actual Deceased Organ Donor – A person for whom the organ retrieval procedure commenced in the operating room (with surgical incision) for the purpose of transplantation. This includes donors who may have been deemed medically unsuitable during surgery or after the removal of organs.^{1,2,3,4}
- 2 Donation after Circulatory Death (DCD) – Donation, for the purpose of transplantation, occurs following death of a person resulting from the irreversible cessation of circulatory and respiratory function.⁴
- 3 Intended Deceased Organ Donor – A person for whom the donation workup was initiated as evidenced by both:
 - Formal written consent undertaken, including consent for donation of specific organs and/or tissues, and
 - Blood for tissue typing sent with allocation of a donor ID;but donation did not proceed.⁵
- 4 Multiorgan Donor – An actual deceased organ donor from whom at least two different types of organs have been retrieved for the purpose of transplantation.⁴
- 5 Recipient – An individual into whom allogeneic human cells, tissues or organs were transplanted.⁴
- 6 Recipient of Multiple Organs – A transplant recipient where two or more different types of organs have been utilised for transplantation in the same operative procedure. This excludes double adult kidney, en bloc kidney and double lung transplants. A single recipient can receive multiple organs in a single transplantation event.
- 7 Retrieval – The procedure of removing organs or tissues from donor.⁴
- 8 Transplantation – The transfer of organs and/or tissue from donor to recipient with the aim of restoring body function(s) of the recipient.⁴
- 9 Counts pertain to solid organs only (Kidney, Liver, Heart, Lung, Pancreas and Stomach Intestines). Pancreatic Islets are reported as “tissue”.

Notes

This report supersedes previous monthly reports and as data reported is subject to revision it may change in subsequent reporting.

All donation and transplantation data is presented by the state or territory of donation

Victorian activity includes those donors from Albury, NSW due to the proximity of Albury to DonateLife services in Victoria.

Method

To assist with transparency of reporting, the counting method is detailed below.

In Australia, data is collected via the Electronic Donor Record (EDR) and is then submitted to the online ANZOD Registry application via an XML for data validation and analysis.

Monthly data presents the number of Actual and Intended organ donors (as per definitions 1 and 3 on page 2) for a calendar month.

The count of transplant recipients identifies the number of individuals who fall under definition 5 (page 2) for the reporting period.

The count of organs transplanted identifies the number of individual organs, regardless of the type of transplant performed.^{6,7,8} Therefore, for reporting the number of organs transplanted, double lungs and double adult/en bloc kidneys have an organ count of two. A liver split into two segments and each transplanted into two recipients is counted as one organ transplanted.

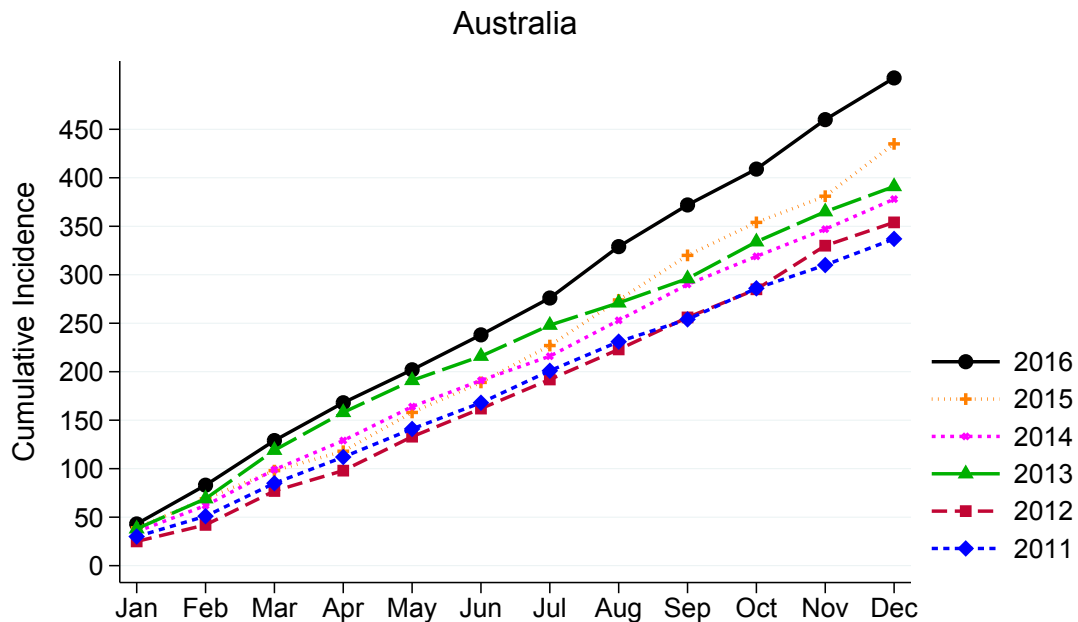
In comparison, reporting of transplantation of organs represents the number of transplant procedures where one or more organs are transplanted during a single event.^{9,10,11} For reporting of double lungs and double adult/en bloc kidneys the transplantation count is one.

References

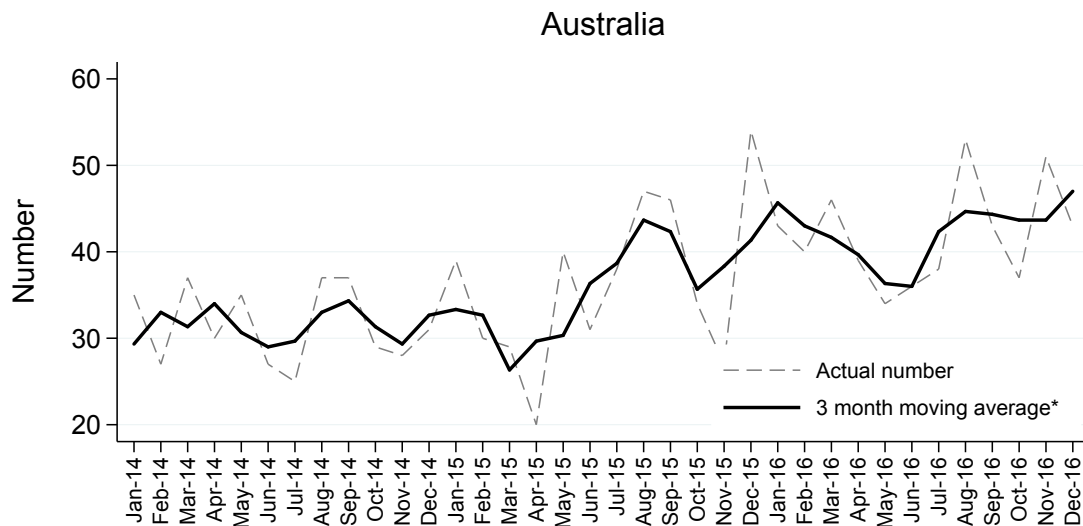
- 1 B.Dominguez-Hill et. al., The critical pathway for deceased donation: reportable uniformity in the approach to deceased donation (2011). *Transplant International*; 373-378.
- 2 ODEQUS Quality Criteria & Quality Indicators in Organ Donation (2013). Available at: http://www.odequs.eu/pdf/ODEQUS_Quality_Criteria-Indicators.pdf
- 3 Variation in Organ Donation Rates in Switzerland: Prospective Cohort Study of Potential Donors (SwissPOD) 2012. Available at: <https://www.swisstransplant.org/14/organ-donation-transplantation-allocation-coordination-wait-list-statistics.php?dl=1&datei=SwissPOD-StudyReport-English.pdf>
- 4 Organ Donation and Transplantation: Striving to Achieve Self-Sufficiency. Third Global WHO Consultation. Madrid (2010). Available at: http://www.transplant-observatory.org/SiteCollectionDocuments/glorepthirdwhoglobalconsultation_part2.pdf
- 5 Formal written letter, Yael Cass, Australian Organ and Tissue Authority, Intended donor definition, (2013).
- 6 B.Dominguez-Gil et. al. Current situation of donation after circulatory death in European Countries. *Transplant International* (2011) 676-686
- 7 Federal Regulations - Title 42: Public Health PART 486-CONDITIONS FOR COVERAGE OF SPECIALISED SERVICES FURNISHED BY SUPPLIERS Subpart G-Requirements for Certification and Designation and Conditions for Coverage: Organ Procurement Organizations
- 8 NHS Blood and Transplantation. Organ Donation and Transplantation Activity Report 2012/13
- 9 Newsletter Transplant of the Council of Europe Organ Transplantation Activity Definitions.
- 10 WHO International Counting Rules
- 11 International Registry in Organ Donation and Transplantation (IRODAT) Variable Definition (2013)

Deceased Organ Donation

Actual Deceased Organ Donors per Month



Actual Deceased Organ Donors per Month

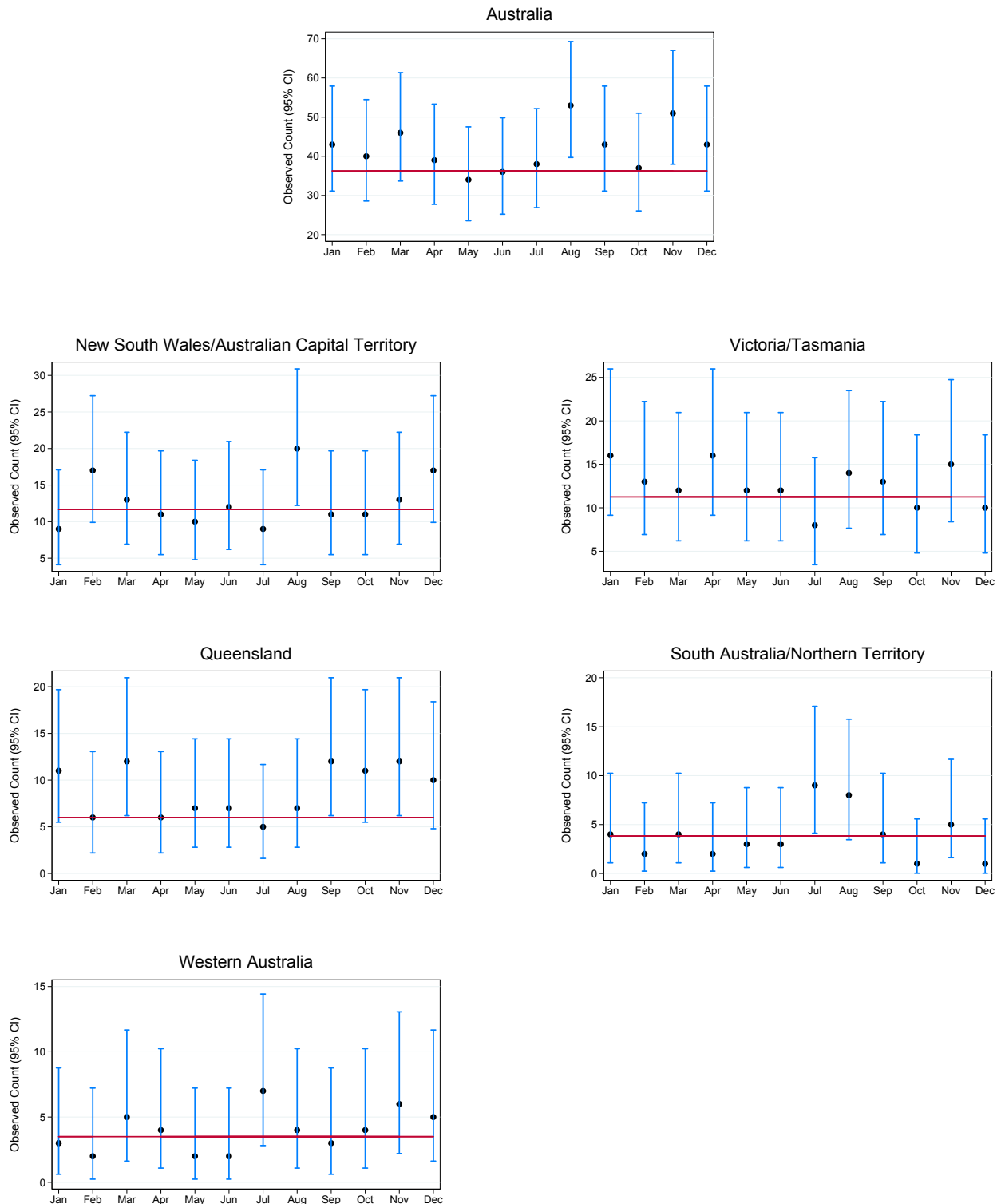


*The average is calculated from the number of actual deceased donors in the current month, previous month and next month; except for the most recent month which is calculated from the previous and current months.

Australia and New Zealand Organ Donation Registry

Actual Deceased Organ Donors per Month and 95% Confidence Intervals by Jurisdiction , 2016

The plots below illustrate month-to-month variability in donor numbers. 95% confidence intervals are exact Poisson intervals. Reference line is the 2015 monthly average. Note the different y-axis scales for each jurisdiction.



Australia and New Zealand Organ Donation Registry

Total Actual Deceased Organ Donors

Actual deceased organ donors according to definition 1 on page 2.

	Jan	Feb	Mar	Apr	May	Jun	Jul	Aug	Sep	Oct	Nov	Dec	Total	DPMP ^{*(1)}	DPMP ^{*(2)}
NSW	7	15	12	11	7	11	7	15	10	11	11	16	133	17.7	17.2
VIC	16	13	11	13	11	11	8	14	12	8	14	9	140	23.1	
QLD	11	6	12	6	7	7	5	7	12	11	12	10	106	21.9	
SA	4	1	4	0	3	3	7	8	4	1	5	0	40	23.4	
WA	3	2	5	4	2	2	7	4	3	4	6	5	47	18.0	
TAS	0	0	1	3	1	1	0	0	1	2	1	1	11	21.2	
NT	0	1	0	2	0	0	2	0	0	0	0	1	6	24.5	
ACT	2	2	1	0	3	1	2	5	1	0	2	1	20	32.3	50.5
AUSTRALIA	43	40	46	39	34	36	38	53	43	37	51	43	503	20.8	

* Donors per million population

Based on the estimate resident population at June 2016 3101.0 Australian Demographic Statistics (Australian Bureau of Statistics) released December 2016

⁽¹⁾ NSW population excludes residents of Southern Area Health Service (included in ACT population)

⁽²⁾ NSW population includes residents of Southern Area Health Service (excluded in ACT population)

Multiorgan Deceased Donors

Multiorgan deceased donors according to definition 4 on page 2.

	Jan	Feb	Mar	Apr	May	Jun	Jul	Aug	Sep	Oct	Nov	Dec	Total
NSW	7	9	8	8	5	7	2	8	4	8	8	10	84
VIC	12	11	9	11	8	7	7	9	9	4	9	7	103
QLD	7	4	9	4	6	6	4	6	8	10	10	9	83
SA	4	1	4	0	3	2	7	4	3	0	4	0	32
WA	3	2	5	3	2	1	5	3	3	2	5	5	39
TAS	0	0	0	3	1	0	0	0	1	2	1	0	8
NT	0	1	0	1	0	0	1	0	0	0	0	1	4
ACT	2	1	1	0	2	0	2	2	1	0	2	0	13
AUSTRALIA	35	29	36	30	27	23	28	32	29	26	39	32	366

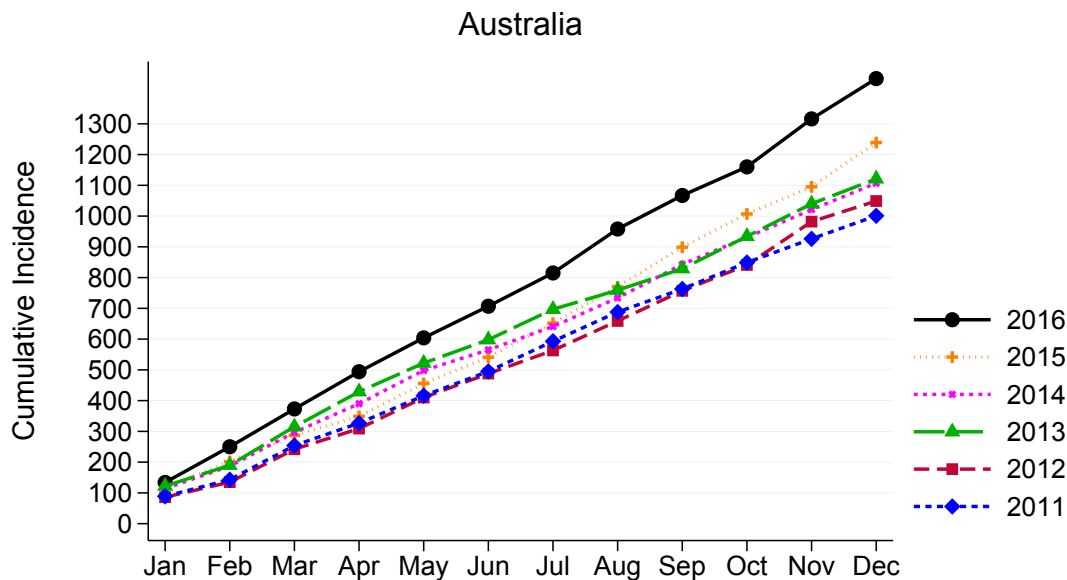
Intended Deceased Organ Donors

Intended deceased organ donors according to definition 3 on page 2.

	Jan	Feb	Mar	Apr	May	Jun	Jul	Aug	Sep	Oct	Nov	Dec	Total
NSW	5	3	2	0	2	6	2	3	0	4	0	4	31
VIC	4	6	2	3	4	1	3	8	2	4	10	9	56
QLD	4	1	1	2	0	6	1	0	1	1	2	1	20
SA	0	0	0	1	2	1	0	3	2	2	3	2	16
WA	0	0	0	1	0	0	3	2	1	0	1	4	12
TAS	0	1	0	0	0	2	0	0	0	0	0	1	4
NT	0	0	0	0	1	0	0	0	0	0	1	0	2
ACT	0	0	0	0	1	0	0	0	1	0	0	0	2
AUSTRALIA	13	11	5	7	10	16	9	16	7	11	17	21	143

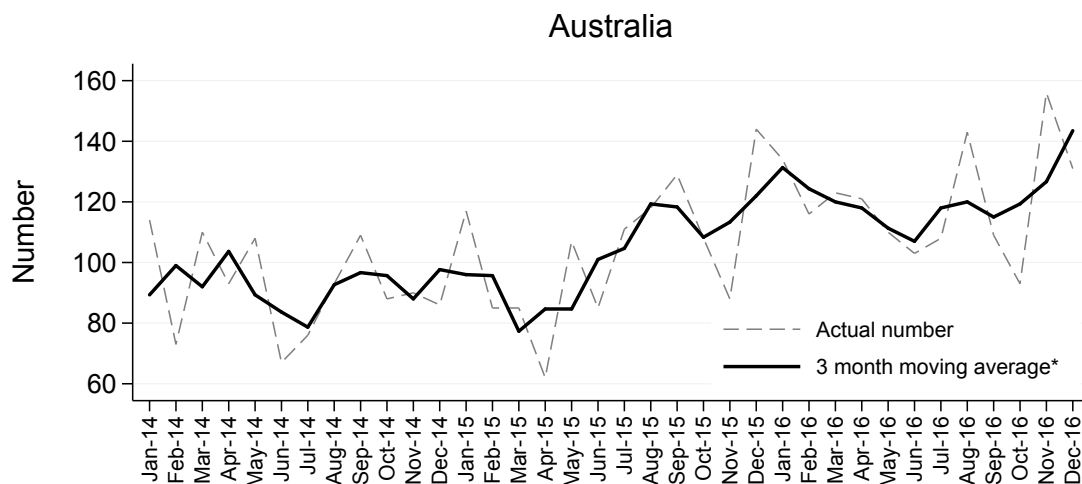
Transplant Recipients from Deceased Organ Donors

Transplant Recipients per Month from Deceased Organ Donors



Recipients transplanted with one or more organs are counted as one.

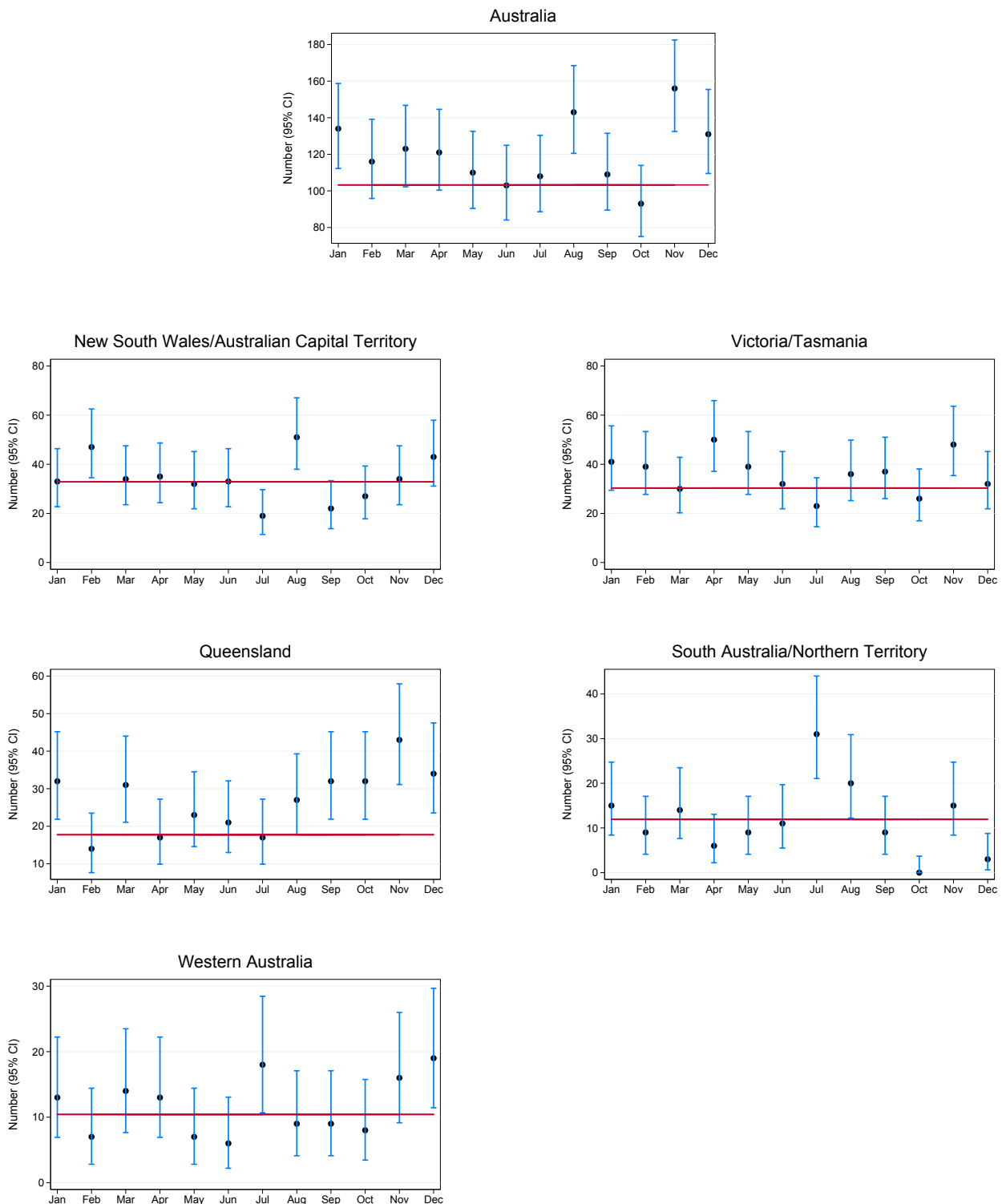
Transplant Recipients per Month from Deceased Organ Donors



*The average is calculated from the number of transplant recipients in the current month, previous month and next month; except for the most recent month which is calculated from the previous and current months.

Total Transplant Recipients from Deceased Organ Donors per Month and 95% Confidence Intervals by Jurisdiction , 2016

The plots below illustrate month-to-month variability in the number of transplant recipients. 95% confidence intervals are exact Poisson intervals. Reference line is the 2015 monthly average. Note the different y-axis scales for each jurisdiction. Jurisdiction of donation is not related to state/territory of transplantation.



Australia and New Zealand Organ Donation Registry

Total Transplant Recipients from Deceased Organ Donors

	Jan	Feb	Mar	Apr	May	Jun	Jul	Aug	Sep	Oct	Nov	Dec	Total
NSW	23	41	30	35	21	33	12	39	19	27	28	43	351
VIC	41	39	29	40	37	32	23	36	34	20	45	30	406
QLD	32	14	31	17	23	21	17	27	32	32	43	34	323
SA	15	5	14	0	9	11	26	20	9	0	15	0	124
WA	13	7	14	13	7	6	18	9	9	8	16	19	139
TAS	0	0	1	10	2	0	0	0	3	6	3	2	27
NT	0	4	0	6	0	0	5	0	0	0	0	3	18
ACT	10	6	4	0	11	0	7	12	3	0	6	0	59
AUSTRALIA	134	116	123	121	110	103	108	143	109	93	156	131	1447

Recipients transplanted with one or more organs are counted as one in the monthly totals.

Mean Transplant Recipients Per Actual Deceased Organ Donor

	Jan	Feb	Mar	Apr	May	Jun	Jul	Aug	Sep	Oct	Nov	Dec	Total
NSW	3.3	2.7	2.5	3.2	3.0	3.0	1.7	2.6	1.9	2.5	2.5	2.7	2.6
VIC	2.6	3.0	2.6	3.1	3.4	2.9	2.9	2.6	2.8	2.5	3.2	3.3	2.9
QLD	2.9	2.3	2.6	2.8	3.3	3.0	3.4	3.9	2.7	2.9	3.6	3.4	3.0
SA	3.8	5.0	3.5	0.0	3.0	3.7	3.7	2.5	2.3	0.0	3.0	0.0	3.1
WA	4.3	3.5	2.8	3.3	3.5	3.0	2.6	2.3	3.0	2.0	2.7	3.8	3.0
TAS	0.0	0.0	1.0	3.3	2.0	0.0	0.0	0.0	3.0	3.0	3.0	2.0	2.5
NT	0.0	4.0	0.0	3.0	0.0	0.0	2.5	0.0	0.0	0.0	0.0	3.0	3.0
ACT	5.0	3.0	4.0	0.0	3.7	0.0	3.5	2.4	3.0	0.0	3.0	0.0	3.0
AUSTRALIA	3.1	2.9	2.7	3.1	3.2	2.9	2.8	2.7	2.5	2.5	3.1	3.0	2.9

Numerator = Total Recipients

Denominator = Total Actual Deceased Donors (definition 1 on page 2)

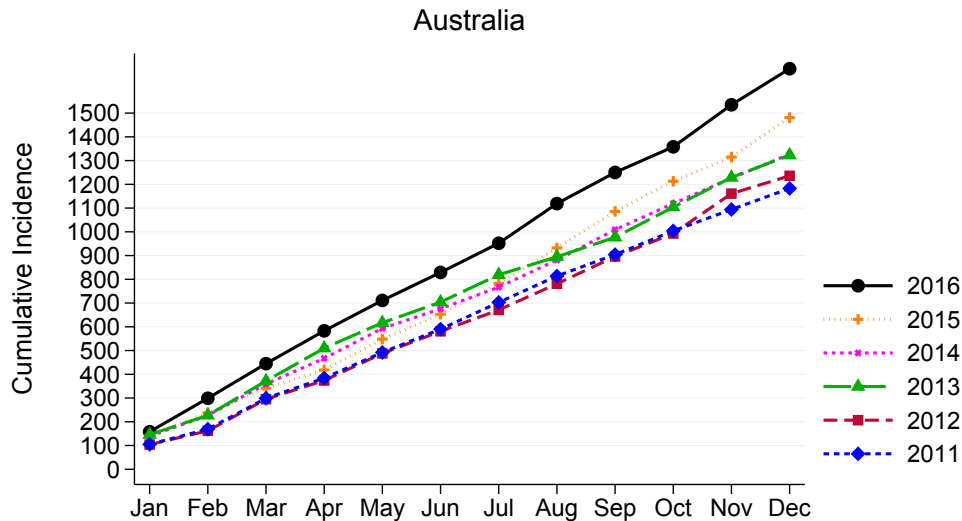
Recipients of Multiple Organs

Recipients of multiple organs according to definition 6 on page 2.

	Jan	Feb	Mar	Apr	May	Jun	Jul	Aug	Sep	Oct	Nov	Dec	Total
NSW	0	5	0	0	0	1	0	3	0	1	1	2	13
VIC	2	2	2	1	3	0	0	4	2	0	1	2	19
QLD	2	1	1	0	1	2	1	0	2	2	1	2	15
SA	0	0	0	0	0	0	0	1	0	0	0	0	1
WA	1	0	1	1	0	1	0	0	1	0	1	2	8
TAS	0	0	0	1	0	0	0	0	0	0	0	0	1
NT	0	0	0	0	0	0	0	0	0	0	0	0	0
ACT	1	0	1	0	1	0	0	1	0	0	0	0	4
AUSTRALIA	6	8	5	3	5	4	1	9	5	3	4	8	61

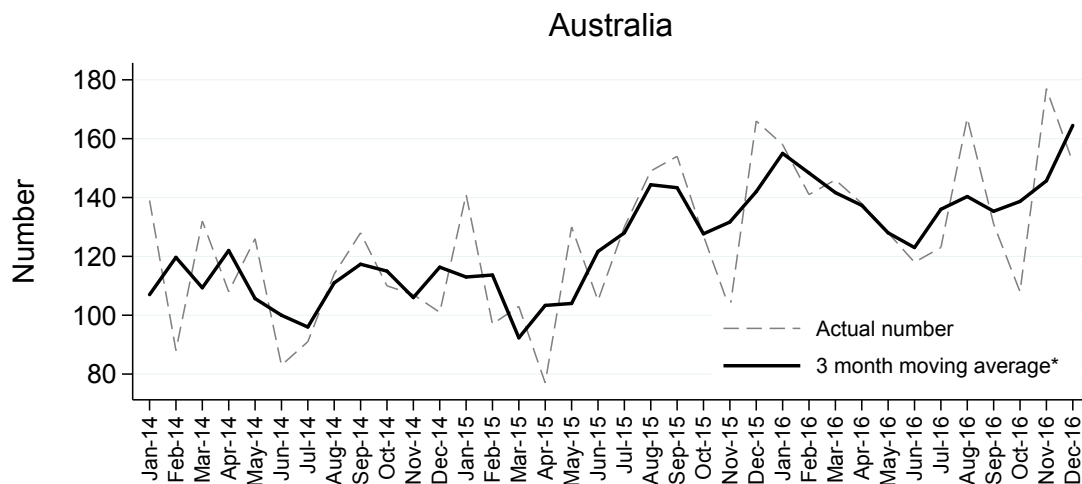
Organs Transplanted from Deceased Organ Donors

Organs Transplanted per Month from Deceased Organ Donors



Each organ is counted individually regardless of the type of transplantation performed.^{6,7,8}

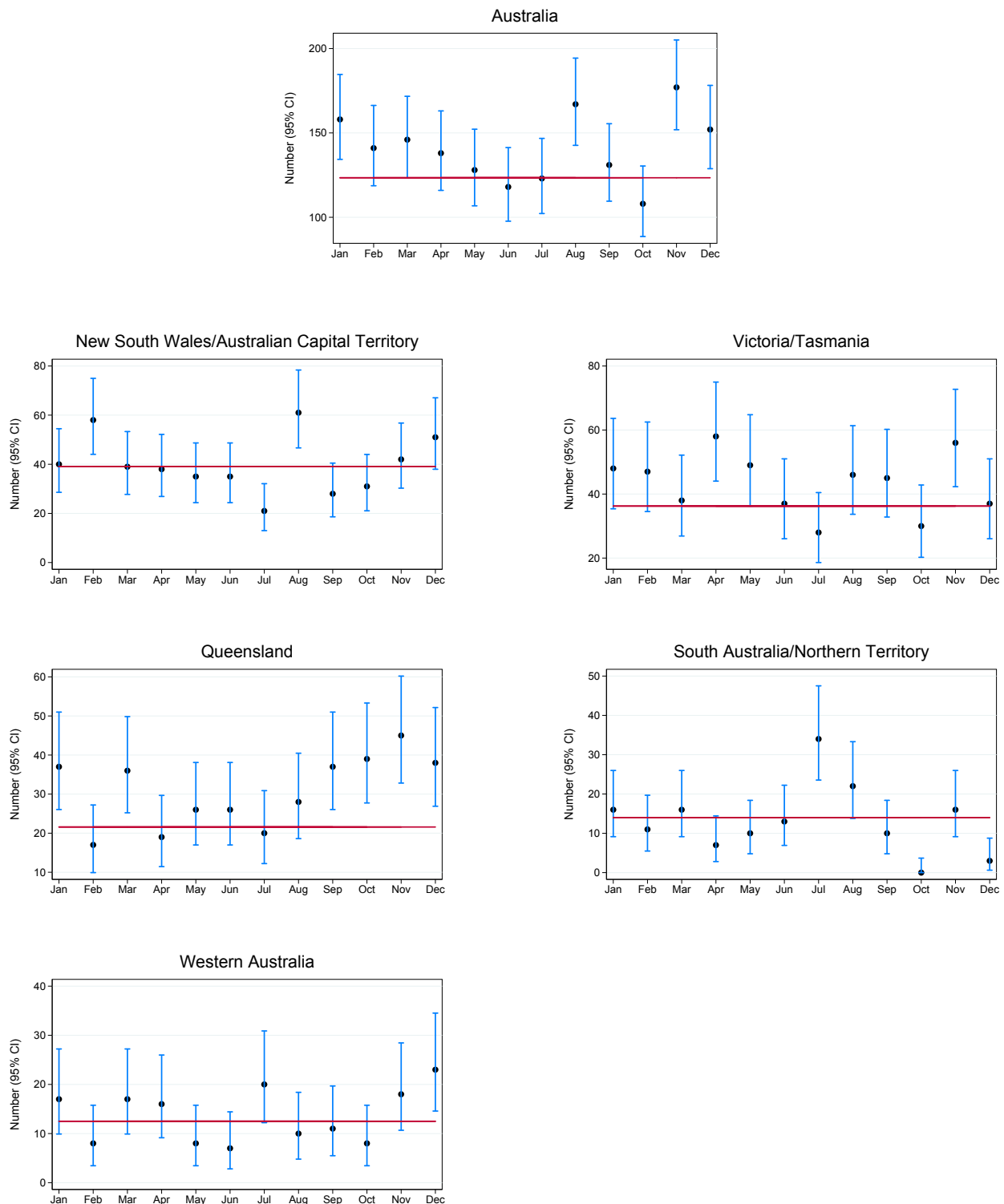
Organs Transplanted per Month from Deceased Organ Donors



*The average is calculated from the number of transplanted organs in the current month, previous month and next month; except for the most recent month which is calculated from the previous and current months.

Total Organs Transplanted per Month and 95% Confidence Intervals by Jurisdiction , 2016

The plots below illustrate month-to-month variability in the number of organs transplanted. 95% confidence intervals are exact Poisson intervals. Reference line is the 2015 monthly average. Note the different y-axis scales for each jurisdiction. Jurisdiction of donation is not related to state/territory of transplantation.



Australia and New Zealand Organ Donation Registry

Total Organs Transplanted

	Jan	Feb	Mar	Apr	May	Jun	Jul	Aug	Sep	Oct	Nov	Dec	Total
NSW	27	52	35	38	22	35	14	47	25	31	35	51	412
VIC	48	47	36	45	46	37	28	46	41	22	53	35	484
QLD	37	17	36	19	26	26	20	28	37	39	45	38	368
SA	16	6	16	0	10	13	29	22	10	0	16	0	138
WA	17	8	17	16	8	7	20	10	11	8	18	23	163
TAS	0	0	2	13	3	0	0	0	4	8	3	2	35
NT	0	5	0	7	0	0	5	0	0	0	0	3	20
ACT	13	6	4	0	13	0	7	14	3	0	7	0	67
AUSTRALIA	158	141	146	138	128	118	123	167	131	108	177	152	1687

Each organ is counted individually regardless of the type of transplant performed.^{6,7,8}

Mean Organs Transplanted Per Actual Deceased Organ Donor

	Jan	Feb	Mar	Apr	May	Jun	Jul	Aug	Sep	Oct	Nov	Dec	Total
NSW	3.9	3.5	2.9	3.5	3.1	3.2	2.0	3.1	2.5	2.8	3.2	3.2	3.1
VIC	3.0	3.6	3.3	3.5	4.2	3.4	3.5	3.3	3.4	2.8	3.8	3.9	3.5
QLD	3.4	2.8	3.0	3.2	3.7	3.7	4.0	4.0	3.1	3.5	3.8	3.8	3.5
SA	4.0	6.0	4.0	0.0	3.3	4.3	4.1	2.8	2.5	0.0	3.2	0.0	3.5
WA	5.7	4.0	3.4	4.0	4.0	3.5	2.9	2.5	3.7	2.0	3.0	4.6	3.5
TAS	0.0	0.0	2.0	4.3	3.0	0.0	0.0	0.0	4.0	4.0	3.0	2.0	3.2
NT	0.0	5.0	0.0	3.5	0.0	0.0	2.5	0.0	0.0	0.0	0.0	3.0	3.3
ACT	6.5	3.0	4.0	0.0	4.3	0.0	3.5	2.8	3.0	0.0	3.5	0.0	3.3
AUSTRALIA	3.7	3.5	3.2	3.5	3.8	3.3	3.2	3.2	3.0	2.9	3.5	3.5	3.4

Numerator = Total Organs

Denominator = Total Actual Donors (definition 1 on page 2)

Organs Transplanted by Organ Type

The following monthly totals of organs represent the number of organs transplanted. Multiple transplants are counted under each of the organs. Tables showing the number of recipients of various combinations of multiple organ transplants are shown on page 16.

Kidney

	Jan	Feb	Mar	Apr	May	Jun	Jul	Aug	Sep	Oct	Nov	Dec	Total
NSW	14	23	18	18	12	19	6	26	13	15	16	28	208
VIC	27	25	14	25	18	20	16	26	22	14	25	17	249
QLD	21	7	18	10	12	14	8	14	16	18	23	18	179
SA	6	2	8	0	5	6	13	12	5	0	10	0	67
WA	6	4	8	7	4	4	11	6	5	3	10	10	78
TAS	0	0	0	6	0	0	0	0	0	4	2	2	14
NT	0	2	0	4	0	0	4	0	0	0	0	2	12
ACT	4	4	2	0	6	0	4	8	2	0	4	0	34
AUSTRALIA	78	67	68	70	57	63	62	92	63	54	90	77	841

Single Kidney = 1 Organ Count

Double Kidney (Double adult/En bloc) = 2 Organ Counts

Liver

	Jan	Feb	Mar	Apr	May	Jun	Jul	Aug	Sep	Oct	Nov	Dec	Total
NSW	5	7	6	9	4	7	3	7	3	9	6	8	74
VIC	7	6	5	7	6	4	1	6	4	3	7	5	61
QLD	6	4	8	4	4	3	4	6	7	8	10	5	69
SA	4	1	3	0	2	2	5	6	2	0	3	0	28
WA	2	1	4	3	1	1	4	2	3	4	4	4	33
TAS	0	0	0	2	0	0	0	0	1	0	1	0	4
NT	0	0	0	0	0	0	1	0	0	0	0	1	2
ACT	2	1	1	0	2	0	2	2	1	0	1	0	12
AUSTRALIA	26	20	27	25	19	17	20	29	21	24	32	23	283

Whole Liver = 1 Organ Count, even if the liver is later split or cut down for transplantation.

Australia and New Zealand Organ Donation Registry

Heart

	Jan	Feb	Mar	Apr	May	Jun	Jul	Aug	Sep	Oct	Nov	Dec	Total
NSW	1	5	1	2	2	3	1	4	1	1	2	5	28
VIC	2	2	1	4	5	3	0	3	3	1	3	2	29
QLD	3	2	1	1	3	2	1	2	4	4	3	5	31
SA	3	1	1	0	1	1	5	1	1	0	1	0	15
WA	1	1	0	1	1	1	1	0	1	1	1	1	10
TAS	0	0	0	0	1	0	0	0	1	0	0	0	2
NT	0	1	0	1	0	0	0	0	0	0	0	0	2
ACT	2	1	0	0	2	0	1	1	0	0	0	0	7
AUSTRALIA	12	13	4	9	15	10	9	11	11	7	10	13	124

Heart = 1 Organ Count, Heart + Other Organ = 1 Heart Count

Lung

	Jan	Feb	Mar	Apr	May	Jun	Jul	Aug	Sep	Oct	Nov	Dec	Total
NSW	7	14	10	8	4	5	4	8	8	6	10	8	92
VIC	10	12	13	8	14	10	11	10	10	4	16	9	127
QLD	6	4	8	4	6	6	6	6	8	9	8	8	79
SA	2	2	4	0	2	4	6	2	2	0	2	0	26
WA	6	2	4	4	2	0	4	2	2	0	2	6	34
TAS	0	0	2	4	2	0	0	0	2	4	0	0	14
NT	0	2	0	2	0	0	0	0	0	0	0	0	4
ACT	4	0	0	0	2	0	0	2	0	0	2	0	10
AUSTRALIA	35	36	41	30	32	25	31	30	32	23	40	31	386

Single Lung = 1 Organ Count, Double Lung = 2 Organ Counts

Pancreas

	Jan	Feb	Mar	Apr	May	Jun	Jul	Aug	Sep	Oct	Nov	Dec	Total
NSW	0	3	0	1	0	1	0	2	0	0	1	2	10
VIC	2	2	3	1	2	0	0	1	2	0	2	2	17
QLD	1	0	1	0	1	1	1	0	2	0	1	2	10
SA	1	0	0	0	0	0	0	1	0	0	0	0	2
WA	2	0	1	1	0	1	0	0	0	0	1	2	8
TAS	0	0	0	1	0	0	0	0	0	0	0	0	1
NT	0	0	0	0	0	0	0	0	0	0	0	0	0
ACT	1	0	1	0	1	0	0	1	0	0	0	0	4
AUSTRALIA	7	5	6	4	4	3	1	5	4	0	5	8	52

Whole Pancreas = 1 Organ Count

Pancreas used for pancreas islets transplantation is excluded from this count.

Australia and New Zealand Organ Donation Registry

Stomach Intestine

	Jan	Feb	Mar	Apr	May	Jun	Jul	Aug	Sep	Oct	Nov	Dec	Total
NSW	0	0	0	0	0	0	0	0	0	0	0	0	0
VIC	0	0	0	0	1	0	0	0	0	0	0	0	1
QLD	0	0	0	0	0	0	0	0	0	0	0	0	0
SA	0	0	0	0	0	0	0	0	0	0	0	0	0
WA	0	0	0	0	0	0	0	0	0	0	0	0	0
TAS	0	0	0	0	0	0	0	0	0	0	0	0	0
NT	0	0	0	0	0	0	0	0	0	0	0	0	0
ACT	0	0	0	0	0	0	0	0	0	0	0	0	0
AUSTRALIA	0	0	0	0	1	0	0	0	0	0	0	0	1

Stomach Intestine = 1 Organ Count

Stomach Intestine + Other Organ = 1 Organ Count

Transplantation of Organs from Deceased Organ Donors

Total Transplantation Procedures

	Jan	Feb	Mar	Apr	May	Jun	Jul	Aug	Sep	Oct	Nov	Dec	Total
NSW	23	46	30	35	21	34	12	42	19	28	29	45	364
VIC	43	41	31	41	40	32	23	40	36	20	46	32	425
QLD	34	15	32	17	24	23	18	27	34	34	44	36	338
SA	15	5	14	0	9	11	26	21	9	0	15	0	125
WA	14	7	15	14	7	7	18	9	10	8	17	21	147
TAS	0	0	1	11	2	0	0	0	3	6	3	2	28
NT	0	4	0	6	0	0	5	0	0	0	0	3	18
ACT	11	6	5	0	12	0	7	13	3	0	6	0	63
AUSTRALIA	140	124	128	124	115	107	109	152	114	96	160	139	1508

Mean Transplantation Procedures

	Jan	Feb	Mar	Apr	May	Jun	Jul	Aug	Sep	Oct	Nov	Dec	Total
NSW	3.3	3.1	2.5	3.2	3.0	3.1	1.7	2.8	1.9	2.5	2.6	2.8	2.7
VIC	2.7	3.2	2.8	3.2	3.6	2.9	2.9	3.0	3.0	2.5	3.3	3.6	3.0
QLD	3.1	2.5	2.7	2.8	3.4	3.3	3.6	3.9	2.8	3.1	3.7	3.6	3.2
SA	3.8	5.0	3.5	0.0	3.0	3.7	3.7	2.6	2.3	0.0	3.0	0.0	3.1
WA	4.7	3.5	3.0	3.5	3.5	3.5	2.6	2.3	3.3	2.0	2.8	4.2	3.1
TAS	0.0	0.0	1.0	3.7	2.0	0.0	0.0	0.0	3.0	3.0	3.0	2.0	2.5
NT	0.0	4.0	0.0	3.0	0.0	0.0	2.5	0.0	0.0	0.0	0.0	3.0	3.0
ACT	5.5	3.0	5.0	0.0	4.0	0.0	3.5	2.6	3.0	0.0	3.0	0.0	3.2
AUSTRALIA	3.3	3.1	2.8	3.2	3.4	3.0	2.9	2.9	2.7	2.6	3.1	3.2	3.0

Numerator = Total Procedures

Denominator = Total Actual Donors (definition 1 on page 2)

Multiorgan Transplantation

	Jan	Feb	Mar	Apr	May	Jun	Jul	Aug	Sep	Oct	Nov	Dec	Total
HEART+LUNGS	1	2	0	0	0	1	0	1	1	1	0	0	7
KIDNEY+HEART	0	0	0	0	0	0	0	1	0	0	0	0	1
KIDNEY+LIVER	0	1	0	0	0	0	0	2	0	2	0	0	5
KIDNEY+PANCREAS	5	5	5	3	4	3	1	5	4	0	4	7	46
LIVER+INTESTINE	0	0	0	0	1	0	0	0	0	0	0	0	1
LIVER+PANCREAS	0	0	0	0	0	0	0	0	0	0	0	1	1
TOTAL	6	8	5	3	5	4	1	9	5	3	4	8	61

Transplantation by Organ Type

The following monthly totals represent the number of transplant procedures by organ type. Multiple organ transplantation is counted under each transplant type. (Refer to Method section on page 3).

Total Kidney Transplants

	Jan	Feb	Mar	Apr	May	Jun	Jul	Aug	Sep	Oct	Nov	Dec	Total
NSW	13	22	18	18	12	19	6	24	11	15	15	25	198
VIC	25	25	14	24	18	20	16	25	22	14	25	17	245
QLD	20	7	18	10	12	13	8	14	16	17	23	18	176
SA	6	2	8	0	5	6	13	11	5	0	10	0	66
WA	6	4	8	7	4	4	11	6	5	3	10	10	78
TAS	0	0	0	6	0	0	0	0	0	4	2	2	14
NT	0	2	0	4	0	0	4	0	0	0	0	2	12
ACT	4	4	2	0	5	0	4	7	2	0	4	0	32
AUSTRALIA	74	66	68	69	56	62	62	87	61	53	89	74	821

Single Kidney (=1), Double adult/En bloc (=1) and
Kidney + any Other Organ (=1)

Kidney (Single) Transplants

	Jan	Feb	Mar	Apr	May	Jun	Jul	Aug	Sep	Oct	Nov	Dec	Total
NSW	12	17	18	18	12	18	6	19	9	14	13	20	176
VIC	21	23	12	22	16	20	16	21	20	14	24	16	225
QLD	18	7	17	10	11	11	7	14	14	15	22	16	162
SA	6	2	8	0	5	6	13	9	5	0	10	0	64
WA	5	4	7	6	4	3	11	6	5	3	9	8	71
TAS	0	0	0	5	0	0	0	0	0	4	2	2	13
NT	0	2	0	4	0	0	4	0	0	0	0	2	12
ACT	3	4	1	0	3	0	4	5	2	0	4	0	26
AUSTRALIA	65	59	63	65	51	58	61	74	55	50	84	64	749

Kidney (Double Adult/En bloc) Transplants

	Jan	Feb	Mar	Apr	May	Jun	Jul	Aug	Sep	Oct	Nov	Dec	Total
NSW	1	1	0	0	0	0	0	2	2	0	1	3	10
VIC	2	0	0	1	0	0	0	1	0	0	0	0	4
QLD	1	0	0	0	0	1	0	0	0	1	0	0	3
SA	0	0	0	0	0	0	0	1	0	0	0	0	1
WA	0	0	0	0	0	0	0	0	0	0	0	0	0
TAS	0	0	0	0	0	0	0	0	0	0	0	0	0
NT	0	0	0	0	0	0	0	0	0	0	0	0	0
ACT	0	0	0	0	1	0	0	1	0	0	0	0	2
AUSTRALIA	4	1	0	1	1	1	0	5	2	1	1	3	20

Australia and New Zealand Organ Donation Registry

Kidney (+ any Other Organ) Transplants

Counts of multiorgan transplants utilising at least one kidney are excluded from the above counts.

	Jan	Feb	Mar	Apr	May	Jun	Jul	Aug	Sep	Oct	Nov	Dec	Total
KIDNEY+HEART	0	0	0	0	0	0	0	1	0	0	0	0	1
KIDNEY+LIVER	0	1	0	0	0	0	0	2	0	2	0	0	5
KIDNEY+PANCREAS	5	5	5	3	4	3	1	5	4	0	4	7	46
TOTAL	5	6	5	3	4	3	1	8	4	2	4	7	52

Total Liver Transplants

	Jan	Feb	Mar	Apr	May	Jun	Jul	Aug	Sep	Oct	Nov	Dec	Total
NSW	5	9	6	10	5	8	3	8	3	9	6	9	81
VIC	9	6	6	8	7	4	1	6	4	3	8	6	68
QLD	7	4	8	4	5	4	5	8	8	8	13	7	81
SA	4	1	3	0	2	2	5	7	2	0	3	0	29
WA	2	1	4	3	1	1	4	2	3	4	4	5	34
TAS	0	0	0	2	0	0	0	0	1	0	1	0	4
NT	0	0	0	0	0	0	1	0	0	0	0	1	2
ACT	2	1	2	0	3	0	2	3	1	0	1	0	15
AUSTRALIA	29	22	29	27	23	19	21	34	22	24	36	28	314

Whole Liver (=1), Split Left (=1), Split Right (=1)
 Cut-down (=1) and Liver + any Other Organ (=1)

Liver (Whole) Transplants

	Jan	Feb	Mar	Apr	May	Jun	Jul	Aug	Sep	Oct	Nov	Dec	Total
NSW	5	4	6	8	3	5	3	4	3	8	5	7	61
VIC	5	6	4	6	4	4	1	5	4	3	6	3	51
QLD	5	4	8	4	3	2	3	4	6	7	6	3	55
SA	4	1	3	0	2	2	5	5	2	0	3	0	27
WA	2	1	4	3	1	1	4	2	3	4	4	3	32
TAS	0	0	0	2	0	0	0	0	1	0	1	0	4
NT	0	0	0	0	0	0	1	0	0	0	0	1	2
ACT	2	1	0	0	1	0	2	1	1	0	1	0	9
AUSTRALIA	23	17	25	23	14	14	19	21	20	22	26	17	241

Liver (Split) Transplants

	Jan	Feb	Mar	Apr	May	Jun	Jul	Aug	Sep	Oct	Nov	Dec	Total
NSW	0	4	0	2	2	2	0	2	0	0	1	2	15
VIC	4	0	2	2	2	0	0	0	0	0	2	2	14
QLD	2	0	0	0	2	2	2	4	2	0	7	4	25
SA	0	0	0	0	0	0	0	2	0	0	0	0	2
WA	0	0	0	0	0	0	0	0	0	0	0	2	2
TAS	0	0	0	0	0	0	0	0	0	0	0	0	0
NT	0	0	0	0	0	0	0	0	0	0	0	0	0
ACT	0	0	2	0	2	0	0	2	0	0	0	0	6
AUSTRALIA	6	4	4	4	8	4	2	10	2	0	10	10	64

Australia and New Zealand Organ Donation Registry

Liver (Cut-down) Transplants

	Jan	Feb	Mar	Apr	May	Jun	Jul	Aug	Sep	Oct	Nov	Dec	Total
NSW	0	0	0	0	0	1	0	1	0	0	0	0	2
VIC	0	0	0	0	0	0	0	0	0	0	0	0	0
QLD	0	0	0	0	0	0	0	0	0	0	0	0	0
SA	0	0	0	0	0	0	0	0	0	0	0	0	0
WA	0	0	0	0	0	0	0	0	0	0	0	0	0
TAS	0	0	0	0	0	0	0	0	0	0	0	0	0
NT	0	0	0	0	0	0	0	0	0	0	0	0	0
ACT	0	0	0	0	0	0	0	0	0	0	0	0	0
AUSTRALIA	0	0	0	0	0	1	0	1	0	0	0	0	2

Liver (+ any Other Organ) Transplants

Counts of multiorgan transplants utilising a liver are excluded from the above counts.

	Jan	Feb	Mar	Apr	May	Jun	Jul	Aug	Sep	Oct	Nov	Dec	Total
LIVER+INTESTINE	0	0	0	0	1	0	0	0	0	0	0	0	1
LIVER+KIDNEY	0	1	0	0	0	0	0	2	0	2	0	0	5
LIVER+PANCREAS	0	0	0	0	0	0	0	0	0	0	0	1	1
TOTAL	0	1	0	0	1	0	0	2	0	2	0	1	7

Australia and New Zealand Organ Donation Registry

Total Heart Transplants

	Jan	Feb	Mar	Apr	May	Jun	Jul	Aug	Sep	Oct	Nov	Dec	Total
NSW	1	5	1	2	2	3	1	4	1	1	2	5	28
VIC	2	2	1	4	5	3	0	3	3	1	3	2	29
QLD	3	2	1	1	3	2	1	2	4	4	3	5	31
SA	3	1	1	0	1	1	5	1	1	0	1	0	15
WA	1	1	0	1	1	1	1	0	1	1	1	1	10
TAS	0	0	0	0	1	0	0	0	1	0	0	0	2
NT	0	1	0	1	0	0	0	0	0	0	0	0	2
ACT	2	1	0	0	2	0	1	1	0	0	0	0	7
AUSTRALIA	12	13	4	9	15	10	9	11	11	7	10	13	124

Heart only (=1) and Heart + any Other Organ (=1)

Heart (Only) Transplants

	Jan	Feb	Mar	Apr	May	Jun	Jul	Aug	Sep	Oct	Nov	Dec	Total
NSW	1	4	1	2	2	3	1	4	1	1	2	5	27
VIC	2	2	1	4	5	3	0	1	3	1	3	2	27
QLD	2	1	1	1	3	1	1	2	4	3	3	5	27
SA	3	1	1	0	1	1	5	1	1	0	1	0	15
WA	1	1	0	1	1	1	1	0	0	1	1	1	9
TAS	0	0	0	0	1	0	0	0	1	0	0	0	2
NT	0	1	0	1	0	0	0	0	0	0	0	0	2
ACT	2	1	0	0	2	0	1	1	0	0	0	0	7
AUSTRALIA	11	11	4	9	15	9	9	9	10	6	10	13	116

Heart (+ any Other Organ) Transplants

Counts of multiorgan transplants utilising a heart are excluded from the above counts.

	Jan	Feb	Mar	Apr	May	Jun	Jul	Aug	Sep	Oct	Nov	Dec	Total
HEART+KIDNEY	0	0	0	0	0	0	0	1	0	0	0	0	1
HEART+LUNGS	1	2	0	0	0	1	0	1	1	1	0	0	7
TOTAL	1	2	0	0	0	1	0	2	1	1	0	0	8

Total Lung Transplants

	Jan	Feb	Mar	Apr	May	Jun	Jul	Aug	Sep	Oct	Nov	Dec	Total
NSW	4	7	5	4	2	3	2	4	4	3	5	4	47
VIC	5	6	7	4	7	5	6	5	5	2	8	5	65
QLD	3	2	4	2	3	3	3	3	4	5	4	4	40
SA	1	1	2	0	1	2	3	1	1	0	1	0	13
WA	3	1	2	2	1	0	2	1	1	0	1	3	17
TAS	0	0	1	2	1	0	0	0	1	2	0	0	7
NT	0	1	0	1	0	0	0	0	0	0	0	0	2
ACT	2	0	0	0	1	0	0	1	0	0	1	0	5
AUSTRALIA	18	18	21	15	16	13	16	15	16	12	20	16	196

Single Lung (=1), Double Lung (=1), Single Lung + any Other Organ (=1),
Double Lung + any Other Organ (=1)

Lung (Double) Transplants

	Jan	Feb	Mar	Apr	May	Jun	Jul	Aug	Sep	Oct	Nov	Dec	Total
NSW	3	6	5	4	2	2	2	4	4	3	5	4	44
VIC	5	6	6	4	7	5	5	4	5	2	8	4	61
QLD	2	1	4	2	3	2	3	3	4	3	4	4	35
SA	1	1	2	0	1	2	3	1	1	0	1	0	13
WA	3	1	2	2	1	0	2	1	0	0	1	3	16
TAS	0	0	1	2	1	0	0	0	1	2	0	0	7
NT	0	1	0	1	0	0	0	0	0	0	0	0	2
ACT	2	0	0	0	1	0	0	1	0	0	1	0	5
AUSTRALIA	16	16	20	15	16	11	15	14	15	10	20	15	183

Lung (Single) Transplants

	Jan	Feb	Mar	Apr	May	Jun	Jul	Aug	Sep	Oct	Nov	Dec	Total
NSW	1	0	0	0	0	1	0	0	0	0	0	0	2
VIC	0	0	1	0	0	0	1	0	0	0	0	1	3
QLD	0	0	0	0	0	0	0	0	0	1	0	0	1
SA	0	0	0	0	0	0	0	0	0	0	0	0	0
WA	0	0	0	0	0	0	0	0	0	0	0	0	0
TAS	0	0	0	0	0	0	0	0	0	0	0	0	0
NT	0	0	0	0	0	0	0	0	0	0	0	0	0
ACT	0	0	0	0	0	0	0	0	0	0	0	0	0
AUSTRALIA	1	0	1	0	0	1	1	0	0	1	0	1	6

Australia and New Zealand Organ Donation Registry

Lung (+ any Other Organ) Transplants

Counts of multiorgan transplants utilising at least one lung are excluded from the above counts.

	Jan	Feb	Mar	Apr	May	Jun	Jul	Aug	Sep	Oct	Nov	Dec	Total
LUNGS+HEART	1	2	0	0	0	1	0	1	1	1	0	0	7
TOTAL	1	2	0	0	0	1	0	1	1	1	0	0	7

Australia and New Zealand Organ Donation Registry

Total Pancreas Transplants

	Jan	Feb	Mar	Apr	May	Jun	Jul	Aug	Sep	Oct	Nov	Dec	Total
NSW	0	3	0	1	0	1	0	2	0	0	1	2	10
VIC	2	2	3	1	2	0	0	1	2	0	2	2	17
QLD	1	0	1	0	1	1	1	0	2	0	1	2	10
SA	1	0	0	0	0	0	0	1	0	0	0	0	2
WA	2	0	1	1	0	1	0	0	0	0	1	2	8
TAS	0	0	0	1	0	0	0	0	0	0	0	0	1
NT	0	0	0	0	0	0	0	0	0	0	0	0	0
ACT	1	0	1	0	1	0	0	1	0	0	0	0	4
AUSTRALIA	7	5	6	4	4	3	1	5	4	0	5	8	52

Whole Pancreas (=1) and Pancreas + any Other Organ (=1)

Pancreas (Whole) Transplants

	Jan	Feb	Mar	Apr	May	Jun	Jul	Aug	Sep	Oct	Nov	Dec	Total
NSW	0	0	0	1	0	0	0	0	0	0	0	0	1
VIC	0	0	1	0	0	0	0	0	0	0	1	0	2
QLD	0	0	0	0	0	0	0	0	0	0	0	0	0
SA	1	0	0	0	0	0	0	0	0	0	0	0	1
WA	1	0	0	0	0	0	0	0	0	0	0	0	1
TAS	0	0	0	0	0	0	0	0	0	0	0	0	0
NT	0	0	0	0	0	0	0	0	0	0	0	0	0
ACT	0	0	0	0	0	0	0	0	0	0	0	0	0
AUSTRALIA	2	0	1	1	0	0	0	0	0	0	1	0	5

Pancreas (+ any Other Organ) Transplants

Counts of multiorgan transplants utilising a pancreas are excluded from the above counts.

	Jan	Feb	Mar	Apr	May	Jun	Jul	Aug	Sep	Oct	Nov	Dec	Total
PANCREAS+KIDNEY	5	5	5	3	4	3	1	5	4	0	4	7	46
PANCREAS+LIVER	0	0	0	0	0	0	0	0	0	0	0	1	1
TOTAL	5	5	5	3	4	3	1	5	4	0	4	8	47

Total Stomach Intestine Transplant Recipients

	Jan	Feb	Mar	Apr	May	Jun	Jul	Aug	Sep	Oct	Nov	Dec	Total
NSW	0	0	0	0	0	0	0	0	0	0	0	0	0
VIC	0	0	0	0	1	0	0	0	0	0	0	0	1
QLD	0	0	0	0	0	0	0	0	0	0	0	0	0
SA	0	0	0	0	0	0	0	0	0	0	0	0	0
WA	0	0	0	0	0	0	0	0	0	0	0	0	0
TAS	0	0	0	0	0	0	0	0	0	0	0	0	0
NT	0	0	0	0	0	0	0	0	0	0	0	0	0
ACT	0	0	0	0	0	0	0	0	0	0	0	0	0
AUSTRALIA	0	0	0	0	1	0	0	0	0	0	0	0	1

Stomach Intestine (=1) and Stomach Intestine + any Other Organ (=1)

Stomach Intestine (+ any Other Organ) Transplants

Counts of multiorgan transplants utilising a stomach intestine are included in above counts.

	Jan	Feb	Mar	Apr	May	Jun	Jul	Aug	Sep	Oct	Nov	Dec	Total
LIVER+INTESTINE	0	0	0	0	1	0	0	0	0	0	0	0	1
TOTAL	0	0	0	0	1	0	0	0	0	0	0	0	1

Activity Summary: Donation Following Circulatory Death

(See definition 2 on page 2)

Actual Organ Donors following Circulatory Death

Actual deceased organ donors according to definition 1 on page 2.

	Jan	Feb	Mar	Apr	May	Jun	Jul	Aug	Sep	Oct	Nov	Dec	Total
NSW	3	4	3	2	2	2	2	7	5	0	2	4	36
VIC	5	8	7	5	4	4	4	2	6	2	7	2	56
QLD	3	1	1	1	1	0	0	2	2	2	1	3	17
SA	0	0	1	0	1	0	1	2	1	0	0	0	6
WA	0	1	1	0	0	0	2	1	0	0	0	0	5
TAS	0	0	0	0	0	0	0	0	0	1	0	0	1
NT	0	1	0	0	0	0	1	0	0	0	0	0	2
ACT	0	1	0	0	0	1	0	1	0	0	1	1	5
AUSTRALIA	11	16	13	8	8	7	10	15	14	5	11	10	128

Transplant Recipients from Donors following Circulatory Death

The following monthly totals represent the number of transplant recipients from deceased organ donors following circulatory death.

	Jan	Feb	Mar	Apr	May	Jun	Jul	Aug	Sep	Oct	Nov	Dec	Total
NSW	9	5	7	2	2	2	5	13	8	0	4	6	63
VIC	10	22	16	12	7	9	11	2	13	2	14	4	122
QLD	5	2	0	1	3	0	0	5	5	5	2	8	36
SA	0	0	3	0	1	0	4	4	4	0	0	0	16
WA	0	3	3	0	0	0	2	1	0	0	0	0	9
TAS	0	0	0	0	0	0	0	0	0	3	0	0	3
NT	0	4	0	0	0	0	2	0	0	0	0	0	6
ACT	0	2	0	0	0	0	0	1	0	0	3	0	6
AUSTRALIA	24	38	29	15	13	11	24	26	30	10	23	18	261

Recipients transplanted with one or more organs are counted as one.

Organs Transplanted from Donors following Circulatory Death

The following monthly totals of organs represent the number of organs transplanted from deceased donors following circulatory death.

	Jan	Feb	Mar	Apr	May	Jun	Jul	Aug	Sep	Oct	Nov	Dec	Total
NSW	11	6	8	2	2	2	6	16	11	0	6	8	78
VIC	12	25	21	12	9	10	13	4	16	2	16	5	145
QLD	5	2	0	2	4	0	0	5	7	5	2	9	41
SA	0	0	3	0	1	0	4	4	5	0	0	0	17
WA	0	4	4	0	0	0	2	1	0	0	0	0	11
TAS	0	0	0	0	0	0	0	0	0	4	0	0	4
NT	0	5	0	0	0	0	2	0	0	0	0	0	7
ACT	0	2	0	0	0	0	0	2	0	0	4	0	8
AUSTRALIA	28	44	36	16	16	12	27	32	39	11	28	22	311

Each organ is counted individually regardless of the type of transplantation performed.

Organs Transplanted by Organ Type from Donors following Circulatory Death

Kidney

	Jan	Feb	Mar	Apr	May	Jun	Jul	Aug	Sep	Oct	Nov	Dec	Total
NSW	6	4	6	2	2	2	4	12	7	0	2	6	53
VIC	7	15	10	10	5	8	8	2	10	2	11	3	91
QLD	5	2	0	0	2	0	0	4	2	4	2	6	27
SA	0	0	2	0	1	0	2	4	2	0	0	0	11
WA	0	2	2	0	0	0	2	1	0	0	0	0	7
TAS	0	0	0	0	0	0	0	0	0	2	0	0	2
NT	0	2	0	0	0	0	2	0	0	0	0	0	4
ACT	0	2	0	0	0	0	0	2	0	0	2	0	6
AUSTRALIA	18	27	20	12	10	10	18	25	21	8	17	15	201

Single Kidney = 1 Organ Count

Double Kidney (Double adult/En bloc) = 2 Organ Counts

Liver

	Jan	Feb	Mar	Apr	May	Jun	Jul	Aug	Sep	Oct	Nov	Dec	Total
NSW	1	0	0	0	0	0	0	1	0	0	0	0	2
VIC	1	3	2	1	0	0	0	0	0	0	1	0	8
QLD	0	0	0	0	0	0	0	1	0	1	0	0	2
SA	0	0	1	0	0	0	1	0	1	0	0	0	3
WA	0	0	0	0	0	0	0	0	0	0	0	0	0
TAS	0	0	0	0	0	0	0	0	0	0	0	0	0
NT	0	0	0	0	0	0	0	0	0	0	0	0	0
ACT	0	0	0	0	0	0	0	0	0	0	0	0	0
AUSTRALIA	2	3	3	1	0	0	1	2	1	1	1	0	15

Whole Liver = 1 Organ Count, even if the liver is later split or cut down for transplantation.

Heart

	Jan	Feb	Mar	Apr	May	Jun	Jul	Aug	Sep	Oct	Nov	Dec	Total
NSW	0	0	0	0	0	0	0	1	0	0	0	0	1
VIC	0	1	0	1	0	0	0	0	0	0	0	0	2
QLD	0	0	0	0	0	0	0	0	1	0	0	1	2
SA	0	0	0	0	0	0	1	0	0	0	0	0	1
WA	0	0	0	0	0	0	0	0	0	0	0	0	0
TAS	0	0	0	0	0	0	0	0	0	0	0	0	0
NT	0	1	0	0	0	0	0	0	0	0	0	0	1
ACT	0	0	0	0	0	0	0	0	0	0	0	0	0
AUSTRALIA	0	2	0	1	0	0	1	1	1	0	0	1	7

Heart = 1 Organ Count, Heart + Other Organ = 1 Heart Count

Australia and New Zealand Organ Donation Registry

Lung

	Jan	Feb	Mar	Apr	May	Jun	Jul	Aug	Sep	Oct	Nov	Dec	Total
NSW	4	2	2	0	0	0	2	2	4	0	4	2	22
VIC	4	6	8	0	4	2	5	2	6	0	4	2	43
QLD	0	0	0	2	2	0	0	0	4	0	0	2	10
SA	0	0	0	0	0	0	0	0	2	0	0	0	2
WA	0	2	2	0	0	0	0	0	0	0	0	0	4
TAS	0	0	0	0	0	0	0	0	0	2	0	0	2
NT	0	2	0	0	0	0	0	0	0	0	0	0	2
ACT	0	0	0	0	0	0	0	0	0	0	2	0	2
AUSTRALIA	8	12	12	2	6	2	7	4	16	2	10	6	87

Single Lung = 1 Organ Count, Double Lung = 2 Organ Counts

Pancreas

	Jan	Feb	Mar	Apr	May	Jun	Jul	Aug	Sep	Oct	Nov	Dec	Total
NSW	0	0	0	0	0	0	0	0	0	0	0	0	0
VIC	0	0	1	0	0	0	0	0	0	0	0	0	1
QLD	0	0	0	0	0	0	0	0	0	0	0	0	0
SA	0	0	0	0	0	0	0	0	0	0	0	0	0
WA	0	0	0	0	0	0	0	0	0	0	0	0	0
TAS	0	0	0	0	0	0	0	0	0	0	0	0	0
NT	0	0	0	0	0	0	0	0	0	0	0	0	0
ACT	0	0	0	0	0	0	0	0	0	0	0	0	0
AUSTRALIA	0	0	1	0	0	0	0	0	0	0	0	0	1

Whole Pancreas = 1 Organ Count

Pancreas used for pancreas islets transplantation is excluded from this count.

Stomach Intestine

	Jan	Feb	Mar	Apr	May	Jun	Jul	Aug	Sep	Oct	Nov	Dec	Total
NSW	0	0	0	0	0	0	0	0	0	0	0	0	0
VIC	0	0	0	0	0	0	0	0	0	0	0	0	0
QLD	0	0	0	0	0	0	0	0	0	0	0	0	0
SA	0	0	0	0	0	0	0	0	0	0	0	0	0
WA	0	0	0	0	0	0	0	0	0	0	0	0	0
TAS	0	0	0	0	0	0	0	0	0	0	0	0	0
NT	0	0	0	0	0	0	0	0	0	0	0	0	0
ACT	0	0	0	0	0	0	0	0	0	0	0	0	0
AUSTRALIA	0	0	0	0	0	0	0	0	0	0	0	0	0

Stomach Intestine = 1 Organ Count

Stomach Intestine + Other Organ = 1 Organ Count

Australia and New Zealand Organ Donation Registry

Transplantation of Organs from Donors following Circulatory Death

Total Transplantation Procedures

	Jan	Feb	Mar	Apr	May	Jun	Jul	Aug	Sep	Oct	Nov	Dec	Total
NSW	9	5	7	2	2	2	5	13	8	0	4	6	63
VIC	10	22	17	12	7	9	11	2	13	2	14	4	123
QLD	5	2	0	1	3	0	0	5	5	5	2	8	36
SA	0	0	3	0	1	0	4	4	4	0	0	0	16
WA	0	3	3	0	0	0	2	1	0	0	0	0	9
TAS	0	0	0	0	0	0	0	0	0	3	0	0	3
NT	0	4	0	0	0	0	2	0	0	0	0	0	6
ACT	0	2	0	0	0	0	0	1	0	0	3	0	6
AUSTRALIA	24	38	30	15	13	11	24	26	30	10	23	18	262

Transplantation by Organ Type from Donors following Circulatory Death

Total Kidney Transplants

	Jan	Feb	Mar	Apr	May	Jun	Jul	Aug	Sep	Oct	Nov	Dec	Total
NSW	6	4	6	2	2	2	4	10	6	0	2	5	49
VIC	7	15	10	10	5	8	8	1	10	2	11	3	90
QLD	5	2	0	0	2	0	0	4	2	4	2	6	27
SA	0	0	2	0	1	0	2	4	2	0	0	0	11
WA	0	2	2	0	0	0	2	1	0	0	0	0	7
TAS	0	0	0	0	0	0	0	0	0	2	0	0	2
NT	0	2	0	0	0	0	2	0	0	0	0	0	4
ACT	0	2	0	0	0	0	0	1	0	0	2	0	5
AUSTRALIA	18	27	20	12	10	10	18	21	20	8	17	14	195

Single Kidney (=1), Double adult/En bloc (=1) and
Kidney + any Other Organ (=1)

Kidney (Single) Transplants

	Jan	Feb	Mar	Apr	May	Jun	Jul	Aug	Sep	Oct	Nov	Dec	Total
NSW	6	4	6	2	2	2	4	8	5	0	2	4	45
VIC	7	15	9	10	5	8	8	0	10	2	11	3	88
QLD	5	2	0	0	2	0	0	4	2	4	2	6	27
SA	0	0	2	0	1	0	2	4	2	0	0	0	11
WA	0	2	2	0	0	0	2	1	0	0	0	0	7
TAS	0	0	0	0	0	0	0	0	0	2	0	0	2
NT	0	2	0	0	0	0	2	0	0	0	0	0	4
ACT	0	2	0	0	0	0	0	0	0	0	2	0	4
AUSTRALIA	18	27	19	12	10	10	18	17	19	8	17	13	188

Australia and New Zealand Organ Donation Registry

Kidney (Double Adult/En bloc) Transplants

	Jan	Feb	Mar	Apr	May	Jun	Jul	Aug	Sep	Oct	Nov	Dec	Total
NSW	0	0	0	0	0	0	0	2	1	0	0	1	4
VIC	0	0	0	0	0	0	0	1	0	0	0	0	1
QLD	0	0	0	0	0	0	0	0	0	0	0	0	0
SA	0	0	0	0	0	0	0	0	0	0	0	0	0
WA	0	0	0	0	0	0	0	0	0	0	0	0	0
TAS	0	0	0	0	0	0	0	0	0	0	0	0	0
NT	0	0	0	0	0	0	0	0	0	0	0	0	0
ACT	0	0	0	0	0	0	0	1	0	0	0	0	1
AUSTRALIA	0	0	0	0	0	0	0	4	1	0	0	1	6

Kidney (+ any Other Organ) Transplants

Counts of multiorgan transplants utilising at least one kidney are excluded from the above counts.

	Jan	Feb	Mar	Apr	May	Jun	Jul	Aug	Sep	Oct	Nov	Dec	Total
KIDNEY+LIVER	0	0	0	0	0	0	0	0	0	0	0	0	0
KIDNEY+PANCREAS	0	0	1	0	0	0	0	0	0	0	0	0	1
TOTAL	0	0	1	0	0	0	0	0	0	0	0	0	1

Australia and New Zealand Organ Donation Registry

Total Liver Transplants

	Jan	Feb	Mar	Apr	May	Jun	Jul	Aug	Sep	Oct	Nov	Dec	Total
NSW	1	0	0	0	0	0	0	1	0	0	0	0	2
VIC	1	3	2	1	0	0	0	0	0	0	1	0	8
QLD	0	0	0	0	0	0	0	1	0	1	0	0	2
SA	0	0	1	0	0	0	1	0	1	0	0	0	3
WA	0	0	0	0	0	0	0	0	0	0	0	0	0
TAS	0	0	0	0	0	0	0	0	0	0	0	0	0
NT	0	0	0	0	0	0	0	0	0	0	0	0	0
ACT	0	0	0	0	0	0	0	0	0	0	0	0	0
AUSTRALIA	2	3	3	1	0	0	1	2	1	1	1	0	15

Whole Liver (=1), Split Left (=1), Split Right (=1)

Cut-down (=1) and Liver + any Other Organ (=1)

Liver (Whole) Transplants

	Jan	Feb	Mar	Apr	May	Jun	Jul	Aug	Sep	Oct	Nov	Dec	Total
NSW	1	0	0	0	0	0	0	1	0	0	0	0	2
VIC	1	3	2	1	0	0	0	0	0	0	1	0	8
QLD	0	0	0	0	0	0	0	1	0	1	0	0	2
SA	0	0	1	0	0	0	1	0	1	0	0	0	3
WA	0	0	0	0	0	0	0	0	0	0	0	0	0
TAS	0	0	0	0	0	0	0	0	0	0	0	0	0
NT	0	0	0	0	0	0	0	0	0	0	0	0	0
ACT	0	0	0	0	0	0	0	0	0	0	0	0	0
AUSTRALIA	2	3	3	1	0	0	1	2	1	1	1	0	15

Liver (Split) Transplants

	Jan	Feb	Mar	Apr	May	Jun	Jul	Aug	Sep	Oct	Nov	Dec	Total
NSW	0	0	0	0	0	0	0	0	0	0	0	0	0
VIC	0	0	0	0	0	0	0	0	0	0	0	0	0
QLD	0	0	0	0	0	0	0	0	0	0	0	0	0
SA	0	0	0	0	0	0	0	0	0	0	0	0	0
WA	0	0	0	0	0	0	0	0	0	0	0	0	0
TAS	0	0	0	0	0	0	0	0	0	0	0	0	0
NT	0	0	0	0	0	0	0	0	0	0	0	0	0
ACT	0	0	0	0	0	0	0	0	0	0	0	0	0
AUSTRALIA	0	0	0	0	0	0	0	0	0	0	0	0	0

Australia and New Zealand Organ Donation Registry

Liver (Cut Down) Transplants

	Jan	Feb	Mar	Apr	May	Jun	Jul	Aug	Sep	Oct	Nov	Dec	Total
NSW	0	0	0	0	0	0	0	0	0	0	0	0	0
VIC	0	0	0	0	0	0	0	0	0	0	0	0	0
QLD	0	0	0	0	0	0	0	0	0	0	0	0	0
SA	0	0	0	0	0	0	0	0	0	0	0	0	0
WA	0	0	0	0	0	0	0	0	0	0	0	0	0
TAS	0	0	0	0	0	0	0	0	0	0	0	0	0
NT	0	0	0	0	0	0	0	0	0	0	0	0	0
ACT	0	0	0	0	0	0	0	0	0	0	0	0	0
AUSTRALIA	0	0	0	0	0	0	0	0	0	0	0	0	0

Liver (+ any Other Organ) Transplants

Counts of multiorgan transplants utilising a liver are excluded from the above counts.

	Jan	Feb	Mar	Apr	May	Jun	Jul	Aug	Sep	Oct	Nov	Dec	Total
LIVER+KIDNEY	0	0	0	0	0	0	0	0	0	0	0	0	0
TOTAL	0	0	0	0	0	0	0	0	0	0	0	0	0

Australia and New Zealand Organ Donation Registry

Total Heart Transplants

	Jan	Feb	Mar	Apr	May	Jun	Jul	Aug	Sep	Oct	Nov	Dec	Total
NSW	0	0	0	0	0	0	0	1	0	0	0	0	1
VIC	0	1	0	1	0	0	0	0	0	0	0	0	2
QLD	0	0	0	0	0	0	0	0	1	0	0	1	2
SA	0	0	0	0	0	0	1	0	0	0	0	0	1
WA	0	0	0	0	0	0	0	0	0	0	0	0	0
TAS	0	0	0	0	0	0	0	0	0	0	0	0	0
NT	0	1	0	0	0	0	0	0	0	0	0	0	1
ACT	0	0	0	0	0	0	0	0	0	0	0	0	0
AUSTRALIA	0	2	0	1	0	0	1	1	1	0	0	1	7

Heart only (=1) and Heart + any Other Organ (=1)

Heart (Only) Transplants

	Jan	Feb	Mar	Apr	May	Jun	Jul	Aug	Sep	Oct	Nov	Dec	Total
NSW	0	0	0	0	0	0	0	1	0	0	0	0	1
VIC	0	1	0	1	0	0	0	0	0	0	0	0	2
QLD	0	0	0	0	0	0	0	0	1	0	0	1	2
SA	0	0	0	0	0	0	1	0	0	0	0	0	1
WA	0	0	0	0	0	0	0	0	0	0	0	0	0
TAS	0	0	0	0	0	0	0	0	0	0	0	0	0
NT	0	1	0	0	0	0	0	0	0	0	0	0	1
ACT	0	0	0	0	0	0	0	0	0	0	0	0	0
AUSTRALIA	0	2	0	1	0	0	1	1	1	0	0	1	7

Total Lung Transplants

	Jan	Feb	Mar	Apr	May	Jun	Jul	Aug	Sep	Oct	Nov	Dec	Total
NSW	2	1	1	0	0	0	1	1	2	0	2	1	11
VIC	2	3	4	0	2	1	3	1	3	0	2	1	22
QLD	0	0	0	1	1	0	0	0	2	0	0	1	5
SA	0	0	0	0	0	0	0	0	1	0	0	0	1
WA	0	1	1	0	0	0	0	0	0	0	0	0	2
TAS	0	0	0	0	0	0	0	0	0	1	0	0	1
NT	0	1	0	0	0	0	0	0	0	0	0	0	1
ACT	0	0	0	0	0	0	0	0	0	0	1	0	1
AUSTRALIA	4	6	6	1	3	1	4	2	8	1	5	3	44

Single Lung (=1), Double Lung (=1), Single Lung + any Other Organ (=1),
 Double Lung + any Other Organ (=1)

Lung (Double) Transplants

	Jan	Feb	Mar	Apr	May	Jun	Jul	Aug	Sep	Oct	Nov	Dec	Total
NSW	2	1	1	0	0	0	1	1	2	0	2	1	11
VIC	2	3	4	0	2	1	2	1	3	0	2	1	21
QLD	0	0	0	1	1	0	0	0	2	0	0	1	5
SA	0	0	0	0	0	0	0	0	1	0	0	0	1
WA	0	1	1	0	0	0	0	0	0	0	0	0	2
TAS	0	0	0	0	0	0	0	0	0	1	0	0	1
NT	0	1	0	0	0	0	0	0	0	0	0	0	1
ACT	0	0	0	0	0	0	0	0	0	0	1	0	1
AUSTRALIA	4	6	6	1	3	1	3	2	8	1	5	3	43

Lung (Single) Transplants

	Jan	Feb	Mar	Apr	May	Jun	Jul	Aug	Sep	Oct	Nov	Dec	Total
NSW	0	0	0	0	0	0	0	0	0	0	0	0	0
VIC	0	0	0	0	0	0	1	0	0	0	0	0	1
QLD	0	0	0	0	0	0	0	0	0	0	0	0	0
SA	0	0	0	0	0	0	0	0	0	0	0	0	0
WA	0	0	0	0	0	0	0	0	0	0	0	0	0
TAS	0	0	0	0	0	0	0	0	0	0	0	0	0
NT	0	0	0	0	0	0	0	0	0	0	0	0	0
ACT	0	0	0	0	0	0	0	0	0	0	0	0	0
AUSTRALIA	0	0	0	0	0	0	1	0	0	0	0	0	1

Total Pancreas Transplants

	Jan	Feb	Mar	Apr	May	Jun	Jul	Aug	Sep	Oct	Nov	Dec	Total
NSW	0	0	0	0	0	0	0	0	0	0	0	0	0
VIC	0	0	1	0	0	0	0	0	0	0	0	0	1
QLD	0	0	0	0	0	0	0	0	0	0	0	0	0
SA	0	0	0	0	0	0	0	0	0	0	0	0	0
WA	0	0	0	0	0	0	0	0	0	0	0	0	0
TAS	0	0	0	0	0	0	0	0	0	0	0	0	0
NT	0	0	0	0	0	0	0	0	0	0	0	0	0
ACT	0	0	0	0	0	0	0	0	0	0	0	0	0
AUSTRALIA	0	0	1	0	0	0	0	0	0	0	0	0	1

Whole Pancreas (=1) and Pancreas + any Other Organ (=1)

Pancreas (Whole) Transplants

	Jan	Feb	Mar	Apr	May	Jun	Jul	Aug	Sep	Oct	Nov	Dec	Total
NSW	0	0	0	0	0	0	0	0	0	0	0	0	0
VIC	0	0	0	0	0	0	0	0	0	0	0	0	0
QLD	0	0	0	0	0	0	0	0	0	0	0	0	0
SA	0	0	0	0	0	0	0	0	0	0	0	0	0
WA	0	0	0	0	0	0	0	0	0	0	0	0	0
TAS	0	0	0	0	0	0	0	0	0	0	0	0	0
NT	0	0	0	0	0	0	0	0	0	0	0	0	0
ACT	0	0	0	0	0	0	0	0	0	0	0	0	0
AUSTRALIA	0	0	0	0	0	0	0	0	0	0	0	0	0

Pancreas (+ any Other Organ) Transplants

Counts of multiorgan transplants utilising a pancreas are included in the above counts.

	Jan	Feb	Mar	Apr	May	Jun	Jul	Aug	Sep	Oct	Nov	Dec	Total
PANCREAS+KIDNEY	0	0	1	0	0	0	0	0	0	0	0	0	1
TOTAL	0	0	1	0	0	0	0	0	0	0	0	0	1

Total Stomach Intestine Transplants

	Jan	Feb	Mar	Apr	May	Jun	Jul	Aug	Sep	Oct	Nov	Dec	Total
NSW	0	0	0	0	0	0	0	0	0	0	0	0	0
VIC	0	0	0	0	0	0	0	0	0	0	0	0	0
QLD	0	0	0	0	0	0	0	0	0	0	0	0	0
SA	0	0	0	0	0	0	0	0	0	0	0	0	0
WA	0	0	0	0	0	0	0	0	0	0	0	0	0
TAS	0	0	0	0	0	0	0	0	0	0	0	0	0
NT	0	0	0	0	0	0	0	0	0	0	0	0	0
ACT	0	0	0	0	0	0	0	0	0	0	0	0	0
AUSTRALIA	0	0	0	0	0	0	0	0	0	0	0	0	0

Stomach Intestine (=1) and Stomach Intestine + any Other Organ (=1)