

**ANZ  
DATA**



**AUSTRALIA &  
NEW ZEALAND**

LIVING KIDNEY DONATION  
REGISTRY

# Monthly Report on Living Kidney Donation in Australia

## May 2019

Produced 14 June 2019 12:14 PM  
Data Received by ANZDATA up to 13 June 2019

## Contents

<b>Explanatory Notes</b>	<b>2</b>
Definitions . . . . .	2
Notes . . . . .	2
<b>Summary of Living Kidney Donation</b>	<b>3</b>
Total Living Kidney Donors by Donor State . . . . .	4
Genetically-Related Donors by Donor State . . . . .	4
Emotionally-Related Donors by Donor State . . . . .	4
Unrelated Donors by Donor State . . . . .	5
Australian Paired-Kidney Exchange Program (AKX) . . . . .	5
<b>Transplant Recipients from Living Kidney Donors</b>	<b>6</b>
Recipients by State of Donation . . . . .	6
Recipients by State of Transplantation . . . . .	6
<b>Transplanting Hospitals reporting in 2019</b>	<b>7</b>

## Explanatory Notes

### Definitions

Donor – A human being, living or deceased, who is a source of cells, tissues or organs for the purpose of transplantation.

Living Kidney Donor – A living human being from whom a kidney has been removed for the purpose of transplantation.

A Living Kidney Donor has one of the following three possible relationships with the recipient:

1. Related:

(a) Genetically Related:

- i. 1st Degree Genetic Relative: Parent, Sibling, Offspring
- ii. 2nd Degree genetic relative, e.g. grandparent, grandchild, aunt, uncle, niece, nephew
- iii. Other than 1st or 2nd degree genetically related, for example cousin

(b) Emotionally Related: Spouse (if not genetically related); in-laws; Adopted; Friend

2. Unrelated = Non Related: Not Genetically or Emotionally Related

Paired Kidney Exchange Programme (AKX) – This programme is an initiative of the Australian Organ and Tissue Authority (OTA) to increase the options for living kidney donation. The programme was established in 2010.

Paired Kidney Exchange Donor – A living kidney donor whom is identified as a match for patients who are eligible for a kidney transplant, and have a living donor who is willing but unable to donate because of an incompatible blood type or tissue type. This donor is willing to donate their kidney to another person.

Recipient – A consented eligible person into whom organs, retrieved for the purpose of transplantation, are received.

Transplantation – The transfer of organs or tissue from donor to recipient with the aim of restoring body function(s) of the recipient.

### Notes

For the purpose of this report data representing Living Kidney Donors are defined in the definition outlined above.

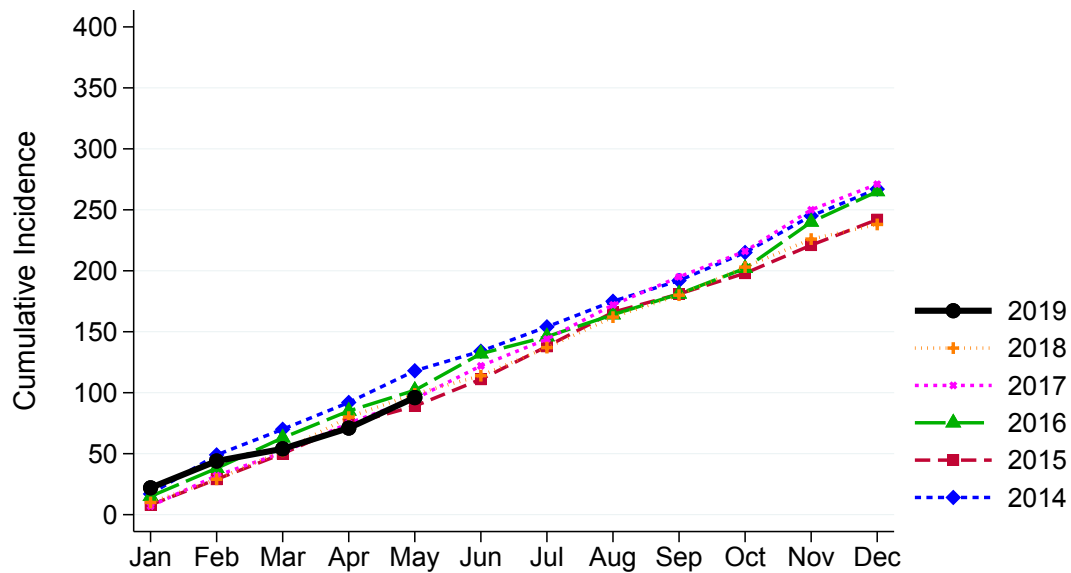
All tables are presented by state/territory of donation, unless otherwise specified.

This report supercedes previous monthly report and as data reported is subject to revision it may change in subsequent reporting.

## Summary of Living Kidney Donation

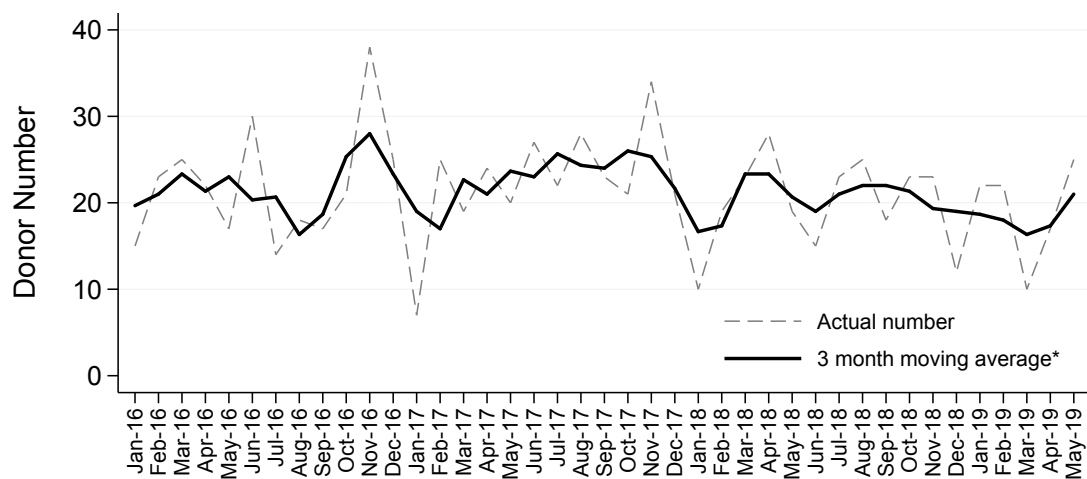
### Living Kidney Donors per Month

Australia



### Living Kidney Donors per Month

Australia



\*The average is calculated from the number of living kidney donors in the current month, previous month and next month; except for the most recent month which is calculated from the previous and current months.

## Total Living Kidney Donors by Donor State

	Jan	Feb	Mar	Apr	May	Jun	Jul	Aug	Sep	Oct	Nov	Dec	Total
NSW	7	5	5	9	8								34
VIC	8	9	4	3	8								32
QLD	2	5	1	2	4								14
SA	2	1	0	2	3								8
WA	3	2	0	1	2								8
TAS	0	0	0	0	0								0
NT	0	0	0	0	0								0
ACT	0	0	0	0	0								0
<b>AUSTRALIA</b>	<b>22</b>	<b>22</b>	<b>10</b>	<b>17</b>	<b>25</b>								<b>96</b>

## Genetically-Related Donors by Donor State

Genetically-related donors includes all degrees of genetically related donors such as siblings, parents, children etc.

	Jan	Feb	Mar	Apr	May	Jun	Jul	Aug	Sep	Oct	Nov	Dec	Total
NSW	2	3	4	4	4								17
VIC	0	1	1	3	4								9
QLD	0	3	1	1	2								7
SA	1	0	0	1	0								2
WA	1	2	0	1	1								5
TAS	0	0	0	0	0								0
NT	0	0	0	0	0								0
ACT	0	0	0	0	0								0
<b>AUSTRALIA</b>	<b>4</b>	<b>9</b>	<b>6</b>	<b>10</b>	<b>11</b>								<b>40</b>

## Emotionally-Related Donors by Donor State

Emotionally-related donors includes donors who have an emotional or social attachment to the recipient, but are not genetically related. This includes spouses and friends. Donors for the Australian Paired-Kidney Exchange Program are also unrelated genetically, but are listed separately.

	Jan	Feb	Mar	Apr	May	Jun	Jul	Aug	Sep	Oct	Nov	Dec	Total
NSW	1	2	1	5	2								11
VIC	0	3	1	0	0								4
QLD	0	2	0	1	2								5
SA	1	0	0	1	3								5
WA	1	0	0	0	1								2
TAS	0	0	0	0	0								0
NT	0	0	0	0	0								0
ACT	0	0	0	0	0								0
<b>AUSTRALIA</b>	<b>3</b>	<b>7</b>	<b>2</b>	<b>7</b>	<b>8</b>								<b>27</b>

## Unrelated Donors by Donor State

	Jan	Feb	Mar	Apr	May	Jun	Jul	Aug	Sep	Oct	Nov	Dec	Total
NSW	4	0	0	0	2								6
VIC	8	5	2	0	4								19
QLD	2	0	0	0	0								2
SA	0	1	0	0	0								1
WA	1	0	0	0	0								1
TAS	0	0	0	0	0								0
NT	0	0	0	0	0								0
ACT	0	0	0	0	0								0
<b>AUSTRALIA</b>	<b>15</b>	<b>6</b>	<b>2</b>	<b>0</b>	<b>6</b>								<b>29</b>

## Australian Paired-Kidney Exchange Program (AKX)

Donors for the AKX Program are included in the unrelated donor numbers above.

	Jan	Feb	Mar	Apr	May	Jun	Jul	Aug	Sep	Oct	Nov	Dec	Total
NSW	3	0	0	0	2								5
VIC	7	5	2	0	4								18
QLD	2	0	0	0	0								2
SA	0	1	0	0	0								1
WA	1	0	0	0	0								1
TAS	0	0	0	0	0								0
NT	0	0	0	0	0								0
ACT	0	0	0	0	0								0
<b>AUSTRALIA</b>	<b>13</b>	<b>6</b>	<b>2</b>	<b>0</b>	<b>6</b>								<b>27</b>

## Transplant Recipients from Living Kidney Donors

### Recipients by State of Donation

	Jan	Feb	Mar	Apr	May	Jun	Jul	Aug	Sep	Oct	Nov	Dec	Total
NSW	7	5	5	9	8								34
VIC	8	9	4	3	8								32
QLD	2	5	1	2	4								14
SA	2	1	0	2	3								8
WA	3	2	0	1	2								8
TAS	0	0	0	0	0								0
NT	0	0	0	0	0								0
ACT	0	0	0	0	0								0
<b>AUSTRALIA</b>	<b>22</b>	<b>22</b>	<b>10</b>	<b>17</b>	<b>25</b>								<b>96</b>

### Recipients by State of Transplantation

	Jan	Feb	Mar	Apr	May	Jun	Jul	Aug	Sep	Oct	Nov	Dec	Total
NSW	7	5	5	9	9								35
VIC	10	9	4	3	7								33
QLD	1	5	1	2	4								13
SA	2	1	0	2	3								8
WA	2	2	0	1	2								7
TAS	0	0	0	0	0								0
NT	0	0	0	0	0								0
ACT	0	0	0	0	0								0
<b>AUSTRALIA</b>	<b>22</b>	<b>22</b>	<b>10</b>	<b>17</b>	<b>25</b>	<b>0</b>	<b>0</b>	<b>0</b>	<b>0</b>	<b>0</b>	<b>0</b>	<b>0</b>	<b>96</b>

## Transplanting Hospitals reporting in 2019

Transplanting Hospital	State
JOHN HUNTER HOSPITAL	NSW
PRINCE OF WALES HOSPITAL	NSW
ROYAL NORTH SHORE HOSPITAL	NSW
ST VINCENT'S HOSPITAL - SYDNEY	NSW
ST VINCENT'S PRIVATE HOSPITAL - SYDNEY	NSW
STATEWIDE RENAL SERVICES	NSW
WESTMEAD HOSPITAL	NSW
QUEENSLAND CHILDREN'S HOSPITAL	QLD
QUEENSLAND RENAL TRANSPLANT SERVICE	QLD
CENTRAL NORTHERN ADELAIDE RENAL	SA
ALFRED HOSPITAL	VIC
AUSTIN HOSPITAL	VIC
MONASH MEDICAL CENTRE (ADULTS)	VIC
ROYAL CHILDRENS HOSPITAL	VIC
ROYAL MELBOURNE HOSPITAL	VIC
FIONA STANLEY HOSPITAL	WA
PERTH CHILDREN'S HOSPITAL	WA
SIR CHARLES GAIRDNER HOSPITAL	WA