



Monthly Report on Deceased Organ Donation in Australia

December 2013

Produced 10 January 2014 10:22 AM
Data Received by ANZOD up to 9 January 2014

Produced in conjunction with





Contents

Definitions	2
Notes	2
Summary of Deceased Organ Donation	3
Total Actual Deceased Donors	5
Intended Deceased Donors	5
Donors Following Cardiac Death	5
Recipients Transplanted From All Solid Organs	6
Total Recipients	8
Mean Recipients Transplanted Per Deceased Donor	8
Organs Transplanted From All Deceased Donors	9
Total Solid Organs Transplanted	9
Total Organs	11
Mean Organs Transplanted Per Deceased Donor	11
Organs Retrieved and Actually Transplanted From All Donors	12
Organs Retrieved and Actually Transplanted Following Cardiac Death of Donor	15



Definitions

Actual Donor - (i)A consented eligible person from whom the retrieval operation is commenced for the purpose of transplantation (this includes donors who may be deemed medically unsuitable at time of surgery or after removal of organs), and/or (ii)A person from whom at least one organ was recovered for the purpose of transplantation.

Donation after Cardiac Death (DCD) - Donation, for the purpose of transplantation, occurs following death of a person resulting from the irreversible cessation of circulatory and respiratory function.

Intended Donor - A consented eligible person from whom organ donation for the purpose of transplantation was initiated, but donation did not proceed to the retrieval operation.

Recipient - A consented eligible person into whom organs, retrieved for the purpose of transplantation, are received.

Retrieval - The procedure of removing organs or tissue from a donor for the purpose of transplantation.

Transplantation - The transfer of organs or tissue from donor to recipient with the aim of restoring body function(s) of the recipient.

Notes

For the purpose of this report data representing Actual Donors are defined in part(i) of the definition outlined above.

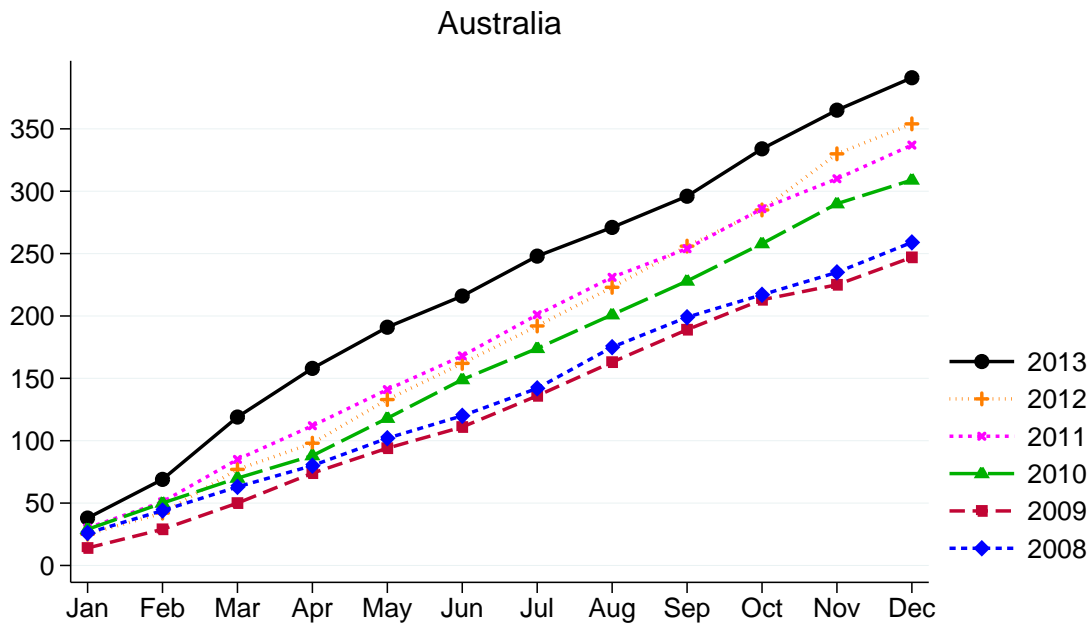
All tables are presented by state/territory of donation. This does not relate to state/territory of transplantation.

Pancreas Islets, Stomach and Intestines are included in counts of solid organ donation.

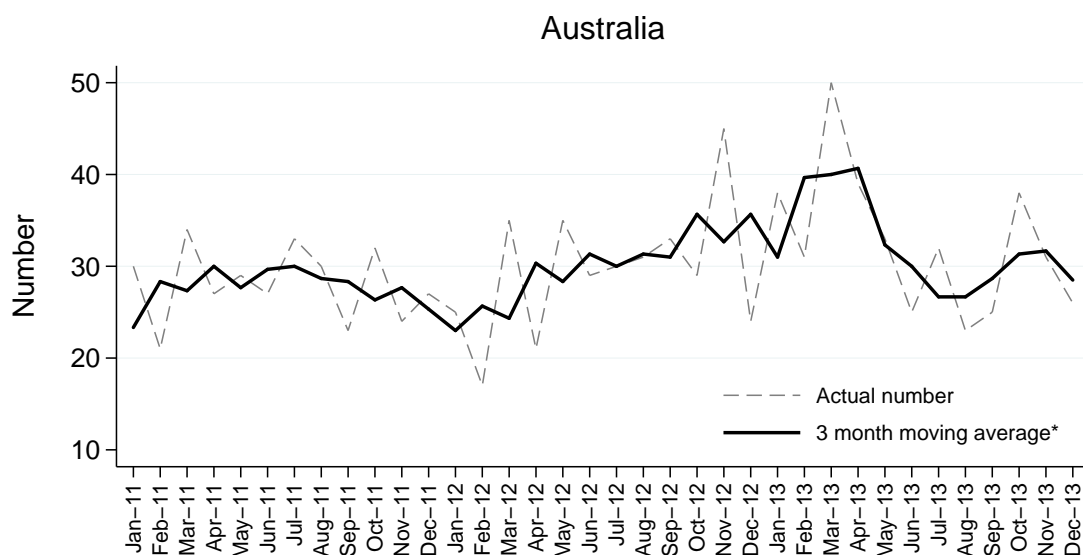
This report supercedes previous monthly reports. As reported figures are subject to revision, they may change in subsequent reporting.

Summary of Deceased Organ Donation

Actual Donors (Cumulative Incidence) per Month



Actual Deceased Donors per Month



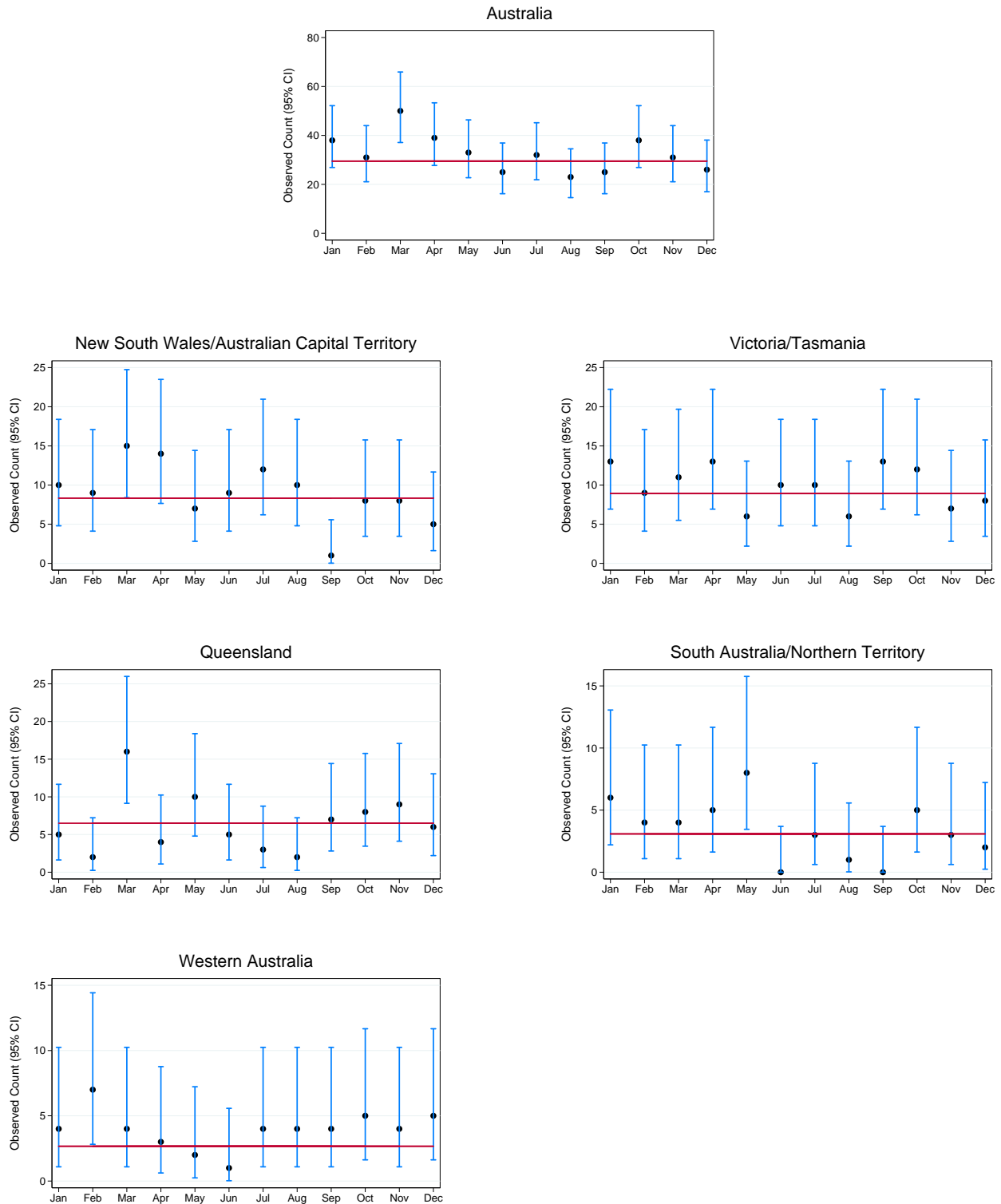
*Calculated from the current month, previous month and next month, except the most recent month which is calculated from the previous and current months.

Actual Deceased Donors (95% Confidence Intervals) per Month 2013 by State

95% confidence intervals are exact Poisson intervals.

Note the different y-axis scales for each state.

Reference line is the 2012 monthly average.





Total Actual Deceased Donors

Number of donors (not adjusted for population).

	Jan	Feb	Mar	Apr	May	Jun	Jul	Aug	Sep	Oct	Nov	Dec	Total	DPMP ^{*(1)}	DPMP ^{*(2)}
NSW	9	9	14	12	7	9	10	10	1	8	8	5	102	14.2	13.8
VIC	13	9	11	11	6	8	8	5	13	12	6	8	110	19.2	
QLD	5	2	16	4	10	5	3	2	7	8	9	6	77	16.5	
SA	6	4	4	3	7	0	2	1	0	4	1	2	34	20.3	
WA	4	7	4	3	2	1	4	4	4	5	4	5	47	18.7	
TAS	0	0	0	2	0	2	2	1	0	0	1	0	8	15.6	
NT	0	0	0	2	1	0	1	0	0	1	2	0	7	29.2	
ACT	1	0	1	2	0	0	2	0	0	0	0	0	6	10.0	15.7
AUSTRALIA	38	31	50	39	33	25	32	23	25	38	31	26	391	16.9	

* Donors per million population

June 3101.0 Australian Demographic Statistics (Australian Bureau of Statistics)

(1) NSW population excludes residents of Southern Area Health Service (included in ACT population)

(2) NSW population includes residents of Southern Area Health Service (excluded in ACT population)

Intended Deceased Donors

Consent obtained, but donation did not proceed.

	Jan	Feb	Mar	Apr	May	Jun	Jul	Aug	Sep	Oct	Nov	Dec	Total
NSW	3	1	2	3	1	0	1	3	0	1	2	3	20
VIC	4	3	1	0	6	1	3	3	2	1	6	2	32
QLD	1	2	2	2	0	1	2	0	2	2	1	1	16
SA	0	1	1	0	0	1	1	0	0	1	0	1	6
WA	0	0	0	0	0	0	2	0	0	1	0	0	3
TAS	0	0	0	0	0	0	0	0	0	0	0	1	1
NT	0	0	0	0	0	0	0	0	0	0	0	0	0
ACT	0	0	0	0	0	0	0	0	0	0	0	0	0
AUSTRALIA	8	7	6	5	7	3	9	6	4	6	9	8	78

Donors Following Cardiac Death

The following monthly totals represent the number of donors after cardiac death.

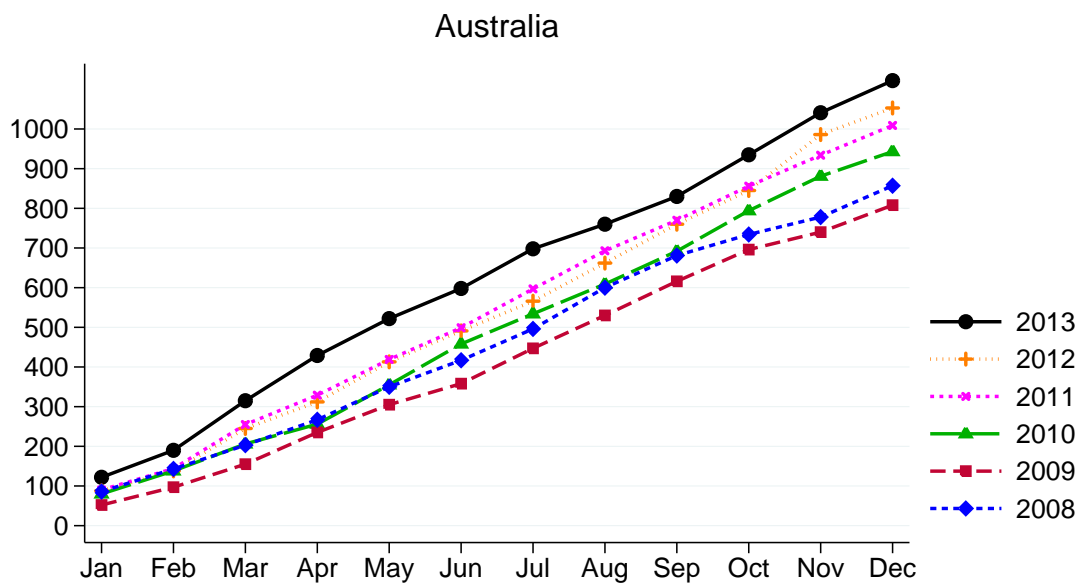
Numbers are included in the TOTAL ACTUAL DONORS count above.

	Jan	Feb	Mar	Apr	May	Jun	Jul	Aug	Sep	Oct	Nov	Dec	Total
NSW	1	4	2	1	0	3	2	0	0	1	0	1	15
VIC	5	3	7	4	0	1	3	2	4	3	2	1	35
QLD	4	1	6	2	5	0	0	1	2	0	1	2	24
SA	1	0	1	0	0	0	0	0	0	0	0	0	2
WA	1	0	0	0	0	0	0	2	1	0	0	1	5
TAS	0	0	0	0	0	1	0	1	0	0	1	0	3
NT	0	0	0	0	0	0	0	0	0	1	1	0	2
ACT	0	0	0	0	0	0	0	0	0	0	0	0	0
AUSTRALIA	12	8	16	7	5	5	5	6	7	5	5	5	86

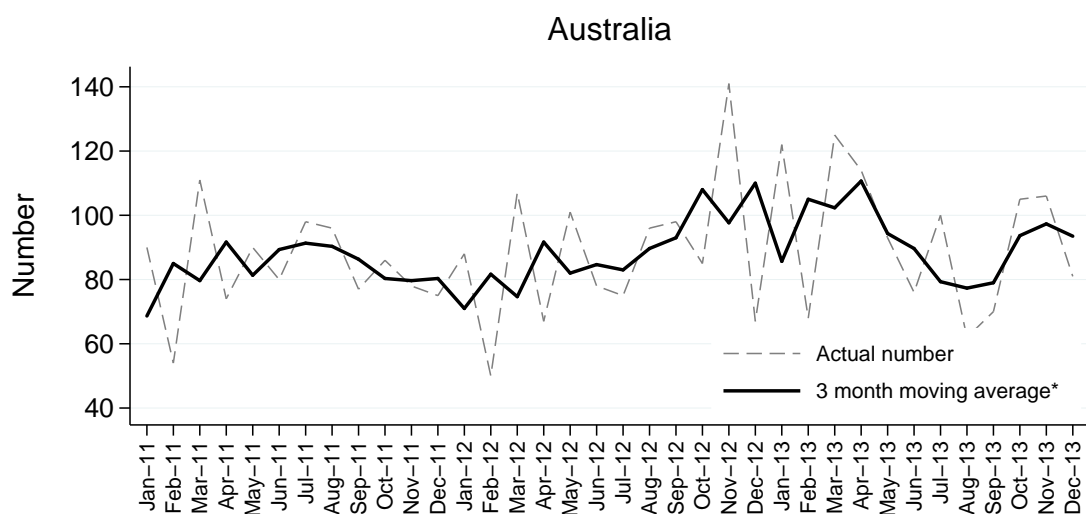
Recipients Transplanted From All Solid Organs

Recipients of multiple organs transplanted at the same time are counted once.

Total Recipients Transplanted (Cumulative Incidence) per Month from All Solid Organs



Total Recipients Transplanted per Month from All Solid Organs



*Calculated from the current month, previous month and next month, except the most recent month which is calculated from the previous and current months.

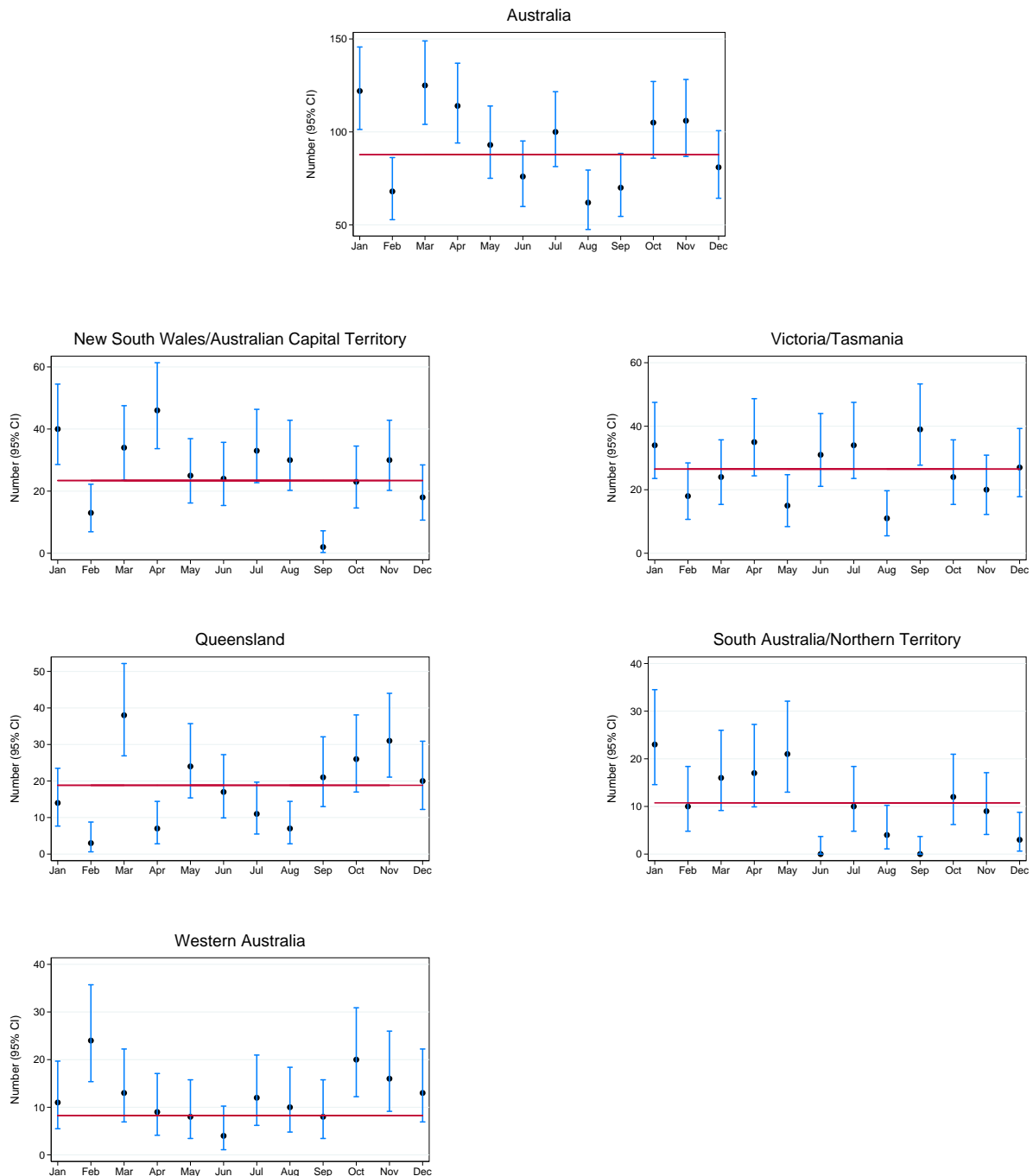
Total Recipients Transplanted from All Solid Organs (95% Confidence Intervals) per Month 2013 by State

State/territory of donation is not related to state/territory of transplantation.

95% confidence intervals are exact Poisson intervals.

Note the different y-axis scales for each state.

Reference line is the 2012 monthly average.





Total Recipients

The following monthly totals represent the number of recipients transplanted with organs from the donors tabulated above.

	Jan	Feb	Mar	Apr	May	Jun	Jul	Aug	Sep	Oct	Nov	Dec	Total
NSW	34	13	28	40	25	24	28	30	2	23	30	18	295
VIC	34	18	24	27	15	24	27	9	39	24	18	27	286
QLD	14	3	38	7	24	17	11	7	21	26	31	20	219
SA	23	10	16	8	17	0	7	4	0	10	4	3	102
WA	11	24	13	9	8	4	12	10	8	20	16	13	148
TAS	0	0	0	8	0	7	7	2	0	0	2	0	26
NT	0	0	0	9	4	0	3	0	0	2	5	0	23
ACT	6	0	6	6	0	0	5	0	0	0	0	0	23
AUSTRALIA	122	68	125	114	93	76	100	62	70	105	106	81	1122

Mean Recipients Transplanted Per Deceased Donor

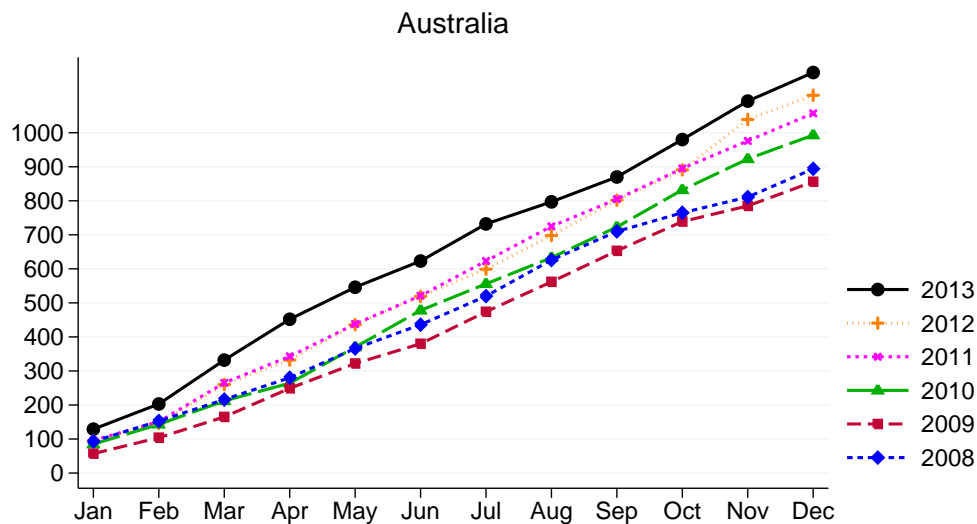
	Jan	Feb	Mar	Apr	May	Jun	Jul	Aug	Sep	Oct	Nov	Dec	Total
NSW	3.8	1.4	2.0	3.3	3.6	2.7	2.8	3.0	2.0	2.9	3.8	3.6	2.9
VIC	2.6	2.0	2.2	2.5	2.5	3.0	3.4	1.8	3.0	2.0	3.0	3.4	2.6
QLD	2.8	1.5	2.4	1.8	2.4	3.4	3.7	3.5	3.0	3.3	3.4	3.3	2.8
SA	3.8	2.5	4.0	2.7	2.4	0.0	3.5	4.0	0.0	2.5	4.0	1.5	3.0
WA	2.8	3.4	3.3	3.0	4.0	4.0	3.0	2.5	2.0	4.0	4.0	2.6	3.1
TAS	0.0	0.0	0.0	4.0	0.0	3.5	3.5	2.0	0.0	0.0	2.0	0.0	3.3
NT	0.0	0.0	0.0	4.5	4.0	0.0	3.0	0.0	0.0	2.0	2.5	0.0	3.3
ACT	6.0	0.0	6.0	3.0	0.0	0.0	2.5	0.0	0.0	0.0	0.0	0.0	3.8
AUSTRALIA	3.2	2.2	2.5	2.9	2.8	3.0	3.1	2.7	2.8	2.8	3.4	3.1	2.9

Organs Transplanted From All Deceased Donors

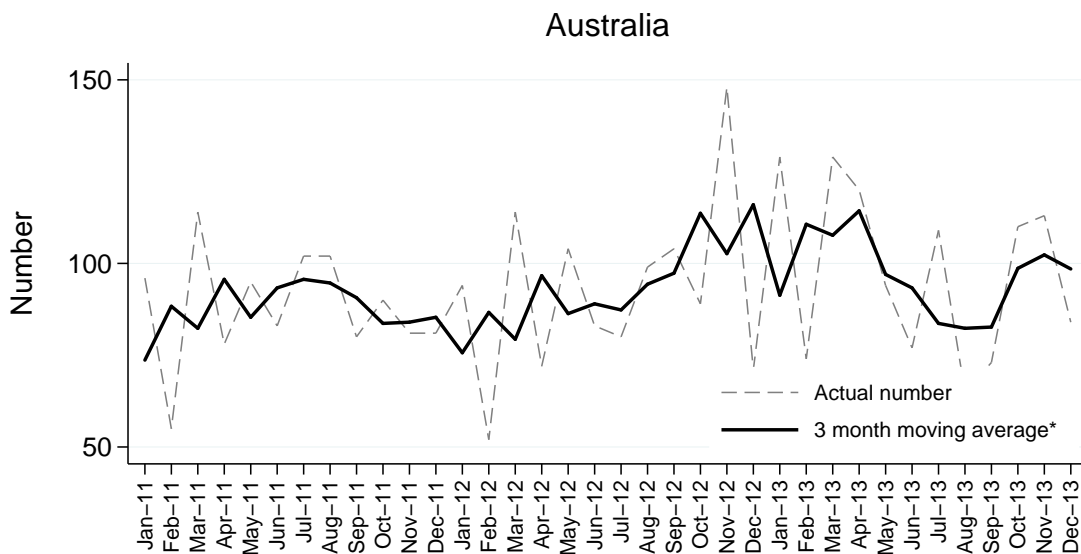
Total Solid Organs Transplanted

Recipients of Pancreas Islets, Stomach and Intestines are included.

Total Solid Organs Transplanted (Cumulative Incidence) per Month



Total Solid Organs Transplanted per Month



*Calculated from the current month, previous month and next month, except the most recent month which is calculated from the previous and current months.

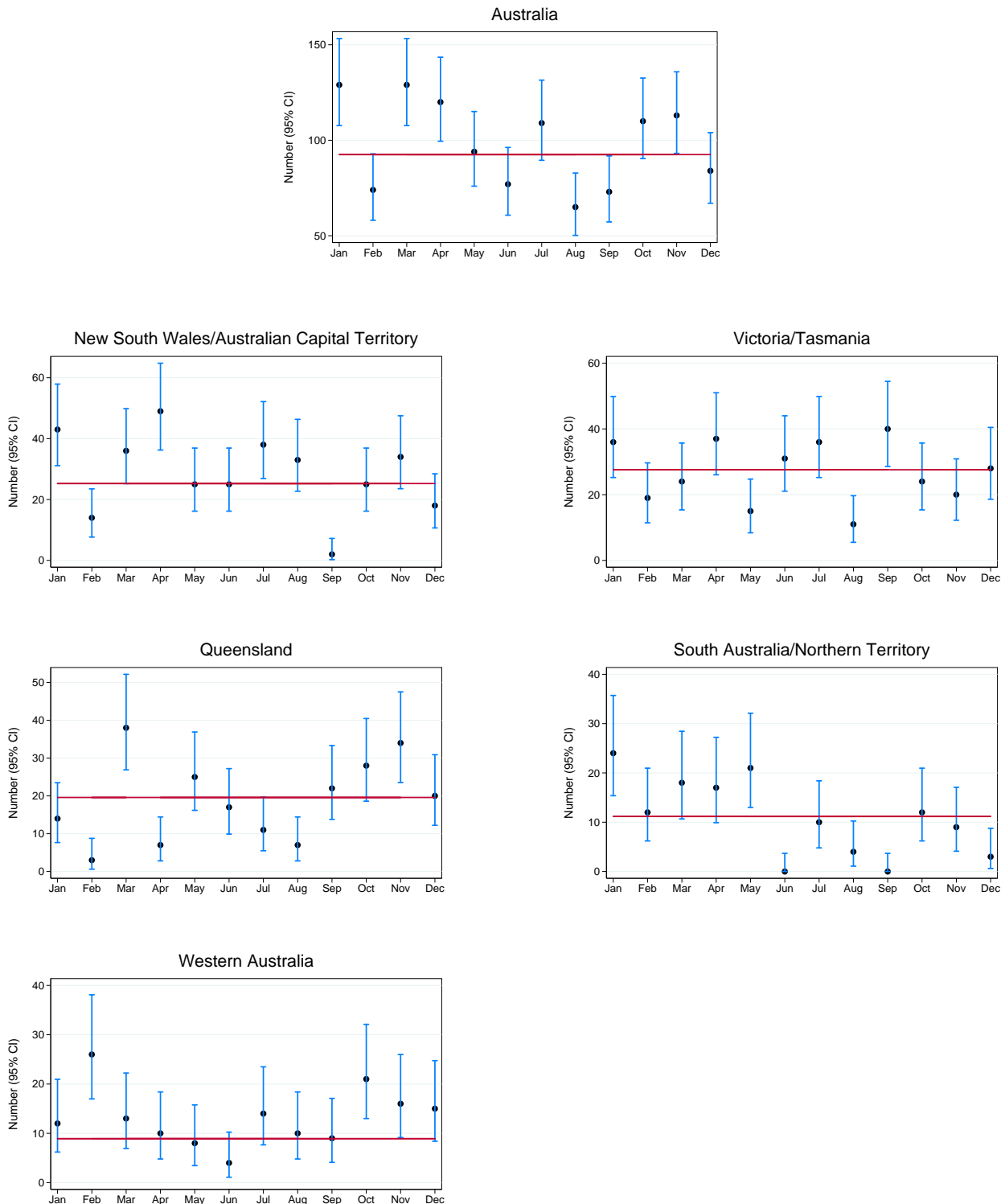
Total Solid Organs Transplanted (95% Confidence Intervals) per Month 2013 by State

State/territory of donation is not related to state/territory of transplantation.

95% confidence intervals are exact Poisson intervals.

Note the different y-axis scales for each state.

Reference line is the 2012 monthly average.





Total Organs

	Jan	Feb	Mar	Apr	May	Jun	Jul	Aug	Sep	Oct	Nov	Dec	Total
NSW	36	14	29	43	25	25	33	33	2	25	34	18	317
VIC	36	19	24	29	15	24	28	9	40	24	18	28	294
QLD	14	3	38	7	25	17	11	7	22	28	34	20	226
SA	24	12	18	8	17	0	7	4	0	10	4	3	107
WA	12	26	13	10	8	4	14	10	9	21	16	15	158
TAS	0	0	0	8	0	7	8	2	0	0	2	0	27
NT	0	0	0	9	4	0	3	0	0	2	5	0	23
ACT	7	0	7	6	0	0	5	0	0	0	0	0	25
AUSTRALIA	129	74	129	120	94	77	109	65	73	110	113	84	1177

Mean Organs Transplanted Per Deceased Donor

	Jan	Feb	Mar	Apr	May	Jun	Jul	Aug	Sep	Oct	Nov	Dec	Total
NSW	4.0	1.6	2.1	3.6	3.6	2.8	3.3	3.3	2.0	3.1	4.3	3.6	3.1
VIC	2.8	2.1	2.2	2.6	2.5	3.0	3.5	1.8	3.1	2.0	3.0	3.5	2.7
QLD	2.8	1.5	2.4	1.8	2.5	3.4	3.7	3.5	3.1	3.5	3.8	3.3	2.9
SA	4.0	3.0	4.5	2.7	2.4	0.0	3.5	4.0	0.0	2.5	4.0	1.5	3.1
WA	3.0	3.7	3.3	3.3	4.0	4.0	3.5	2.5	2.3	4.2	4.0	3.0	3.4
TAS	0.0	0.0	0.0	4.0	0.0	3.5	4.0	2.0	0.0	0.0	2.0	0.0	3.4
NT	0.0	0.0	0.0	4.5	4.0	0.0	3.0	0.0	0.0	2.0	2.5	0.0	3.3
ACT	7.0	0.0	7.0	3.0	0.0	0.0	2.5	0.0	0.0	0.0	0.0	0.0	4.2
AUSTRALIA	3.4	2.4	2.6	3.1	2.8	3.1	3.4	2.8	2.9	2.9	3.6	3.2	3.0



Organs Retrieved and Actually Transplanted From All Donors

The following monthly totals of organs represent the number of organs from all deceased donors retrieved and transplanted.

Multiple transplants (other than Heart/Lung) will be counted under each of the organs.

Kidney

Number of kidneys includes combined transplant (eg kidney/pancreas, kidney/liver and en bloc and double adult transplants)

	Jan	Feb	Mar	Apr	May	Jun	Jul	Aug	Sep	Oct	Nov	Dec	Total
NSW	18	14	15	19	12	16	15	18	2	14	14	10	167
VIC	20	10	17	17	10	14	13	6	23	14	9	14	167
QLD	8	2	26	6	14	8	6	4	12	14	16	12	128
SA	12	4	8	3	11	0	4	2	0	7	2	2	55
WA	8	14	8	6	4	2	8	6	6	10	8	8	88
TAS	0	0	0	4	0	4	4	2	0	0	1	0	15
NT	0	0	0	4	2	0	2	0	0	2	4	0	14
ACT	2	0	2	4	0	0	3	0	0	0	0	0	11
AUSTRALIA	68	44	76	63	53	44	55	38	43	61	54	46	645

Liver

Split livers and cut down livers are included.

	Jan	Feb	Mar	Apr	May	Jun	Jul	Aug	Sep	Oct	Nov	Dec	Total
NSW	8	0	7	11	7	6	9	7	0	6	8	5	74
VIC	6	4	2	5	4	5	7	1	7	6	4	6	57
QLD	2	1	7	1	5	4	2	1	5	7	7	3	45
SA	5	3	4	3	4	0	2	1	0	1	0	1	24
WA	1	6	2	2	2	1	4	2	2	3	4	4	33
TAS	0	0	0	2	0	2	2	0	0	0	1	0	7
NT	0	0	0	2	1	0	1	0	0	0	1	0	5
ACT	2	0	2	1	0	0	2	0	0	0	0	0	7
AUSTRALIA	24	14	24	27	23	18	29	12	14	23	25	19	252

Heart

Combined heart/lung transplants are excluded.

	Jan	Feb	Mar	Apr	May	Jun	Jul	Aug	Sep	Oct	Nov	Dec	Total
NSW	3	0	1	4	3	1	3	1	0	0	4	1	21
VIC	2	1	3	1	0	1	3	0	3	0	1	2	17
QLD	1	0	0	0	1	2	1	0	1	3	5	1	15
SA	3	3	2	1	0	0	0	0	0	0	1	0	10
WA	0	3	0	0	1	0	1	0	1	3	1	1	11
TAS	0	0	0	0	0	0	0	0	0	0	0	0	0
NT	0	0	0	1	0	0	0	0	0	0	0	0	1
ACT	1	0	1	0	0	0	0	0	0	0	0	0	2
AUSTRALIA	10	7	7	7	5	4	8	1	5	6	12	5	77



Heart/Lung

Includes only combined Heart/Lung transplants.

	Jan	Feb	Mar	Apr	May	Jun	Jul	Aug	Sep	Oct	Nov	Dec	Total
NSW	0	0	0	1	0	1	0	0	0	0	0	0	2
VIC	0	0	0	0	0	0	0	0	0	0	0	0	0
QLD	0	0	0	0	0	0	0	0	0	0	0	0	0
SA	0	0	0	0	0	0	0	0	0	0	0	0	0
WA	0	0	0	0	0	0	0	0	0	0	0	0	0
TAS	0	0	0	0	0	0	0	0	0	0	0	0	0
NT	0	0	0	0	0	0	0	0	0	0	0	0	0
ACT	0	0	0	0	0	0	0	0	0	0	0	0	0
AUSTRALIA	0	0	0	1	0	1	0	0	0	0	0	0	2

Lung

Included are left or right lung transplants and double lung transplants. Combined heart/lung transplants are excluded.

	Jan	Feb	Mar	Apr	May	Jun	Jul	Aug	Sep	Oct	Nov	Dec	Total
NSW	5	0	6	5	3	1	4	5	0	5	4	2	40
VIC	6	4	2	5	1	4	4	2	6	4	4	5	47
QLD	3	0	5	0	5	3	2	2	4	4	4	4	36
SA	3	0	2	1	2	0	0	1	0	2	1	0	12
WA	2	3	3	1	1	1	0	2	0	5	3	1	22
TAS	0	0	0	2	0	1	1	0	0	0	0	0	4
NT	0	0	0	2	1	0	0	0	0	0	0	0	3
ACT	1	0	1	1	0	0	0	0	0	0	0	0	3
AUSTRALIA	20	7	19	17	13	10	11	12	10	20	16	12	167

Pancreas

Pancreas figures relate to the transplantation of the whole organ and not those used for islets.

	Jan	Feb	Mar	Apr	May	Jun	Jul	Aug	Sep	Oct	Nov	Dec	Total
NSW	2	0	0	3	0	0	2	2	0	0	4	0	13
VIC	2	0	0	1	0	0	1	0	1	0	0	1	6
QLD	0	0	0	0	0	0	0	0	0	0	2	0	2
SA	1	2	2	0	0	0	0	0	0	0	0	0	5
WA	1	0	0	1	0	0	1	0	0	0	0	1	4
TAS	0	0	0	0	0	0	1	0	0	0	0	0	1
NT	0	0	0	0	0	0	0	0	0	0	0	0	0
ACT	1	0	1	0	0	0	0	0	0	0	0	0	2
AUSTRALIA	7	2	3	5	0	0	5	2	1	0	6	2	33



Pancreas Islets

	Jan	Feb	Mar	Apr	May	Jun	Jul	Aug	Sep	Oct	Nov	Dec	Total
NSW	0	0	0	0	0	0	0	0	0	0	0	0	0
VIC	0	0	0	0	0	0	0	0	0	0	0	0	0
QLD	0	0	0	0	0	0	0	0	0	0	0	0	0
SA	0	0	0	0	0	0	1	0	0	0	0	0	1
WA	0	0	0	0	0	0	0	0	0	0	0	0	0
TAS	0	0	0	0	0	0	0	0	0	0	0	0	0
NT	0	0	0	0	0	0	0	0	0	0	0	0	0
ACT	0	0	0	0	0	0	0	0	0	0	0	0	0
AUSTRALIA	0	0	0	0	0	0	1	0	0	0	0	0	1

Intestine

Stomach and/or intestines are included.

	Jan	Feb	Mar	Apr	May	Jun	Jul	Aug	Sep	Oct	Nov	Dec	Total
NSW	0	0	0	0	0	0	0	0	0	0	0	0	0
VIC	0	0	0	0	0	0	0	0	0	0	0	0	0
QLD	0	0	0	0	0	0	0	0	0	0	0	0	0
SA	0	0	0	0	0	0	0	0	0	0	0	0	0
WA	0	0	0	0	0	0	0	0	0	0	0	0	0
TAS	0	0	0	0	0	0	0	0	0	0	0	0	0
NT	0	0	0	0	0	0	0	0	0	0	0	0	0
ACT	0	0	0	0	0	0	0	0	0	0	0	0	0
AUSTRALIA	0	0	0	0	0	0	0	0	0	0	0	0	0

Organs Retrieved and Actually Transplanted Following Cardiac Death of Donor

The following monthly totals of organs represent the number of recipients from the donors after cardiac death tabulated on page 3. Numbers are included in the ALL DONORS count on the previous pages. Multiple transplants that occur at the same time will be counted under each organ.

Kidney

Number of kidneys includes combined transplant (eg kidney/pancreas and en bloc and double adult transplants)

	Jan	Feb	Mar	Apr	May	Jun	Jul	Aug	Sep	Oct	Nov	Dec	Total
NSW	2	6	4	2	0	6	4	0	0	2	0	2	28
VIC	7	5	11	7	0	2	5	4	7	3	2	0	53
QLD	8	0	8	4	8	0	0	2	4	0	2	4	40
SA	2	0	2	0	0	0	0	0	0	0	0	0	4
WA	2	0	0	0	0	0	0	4	0	0	0	0	6
TAS	0	0	0	0	0	2	0	2	0	0	1	0	5
NT	0	0	0	0	0	0	0	0	0	2	2	0	4
ACT	0	0	0	0	0	0	0	0	0	0	0	0	0
AUSTRALIA	21	11	25	13	8	10	9	12	11	7	7	6	140

Liver

Split livers and cut down livers are included.

	Jan	Feb	Mar	Apr	May	Jun	Jul	Aug	Sep	Oct	Nov	Dec	Total
NSW	0	0	1	0	0	0	2	0	0	0	0	0	3
VIC	0	1	1	0	0	0	0	0	1	0	0	0	3
QLD	0	0	0	0	1	0	0	0	0	0	0	0	1
SA	1	0	0	0	0	0	0	0	0	0	0	0	1
WA	0	0	0	0	0	0	0	0	0	0	0	0	0
TAS	0	0	0	0	0	1	0	0	0	0	1	0	2
NT	0	0	0	0	0	0	0	0	0	0	0	0	0
ACT	0	0	0	0	0	0	0	0	0	0	0	0	0
AUSTRALIA	1	1	2	0	1	1	2	0	1	0	1	0	10

Lung

Included are left or right lung transplants as well as lung block transplants.

	Jan	Feb	Mar	Apr	May	Jun	Jul	Aug	Sep	Oct	Nov	Dec	Total
NSW	1	0	1	1	0	0	0	0	0	1	0	0	4
VIC	2	1	1	1	0	1	1	1	2	1	1	1	13
QLD	2	0	1	0	2	0	0	1	1	0	0	1	8
SA	0	0	0	0	0	0	0	0	0	0	0	0	0
WA	1	0	0	0	0	0	0	1	0	0	0	0	2
TAS	0	0	0	0	0	1	0	0	0	0	0	0	1
NT	0	0	0	0	0	0	0	0	0	0	0	0	0
ACT	0	0	0	0	0	0	0	0	0	0	0	0	0
AUSTRALIA	6	1	3	2	2	2	1	3	3	2	1	2	28



Pancreas

Pancreas figures relate to the transplantation of the whole organ and not those used for islets.

	Jan	Feb	Mar	Apr	May	Jun	Jul	Aug	Sep	Oct	Nov	Dec	Total
NSW	0	0	0	0	0	0	0	0	0	0	0	0	0
VIC	0	0	0	0	0	0	0	0	0	0	0	0	0
QLD	0	0	0	0	0	0	0	0	0	0	0	0	0
SA	0	0	0	0	0	0	0	0	0	0	0	0	0
WA	0	0	0	0	0	0	0	0	0	0	0	0	0
TAS	0	0	0	0	0	0	0	0	0	0	0	0	0
NT	0	0	0	0	0	0	0	0	0	0	0	0	0
ACT	0	0	0	0	0	0	0	0	0	0	0	0	0
AUSTRALIA	0	0	0	0	0	0	0	0	0	0	0	0	0