



Monthly Report on Deceased Organ Donation in Australia

December 2012

Produced 15 January 2013 3:54 PM
Data Received by ANZOD up to 14 January 2013

Produced in conjunction with



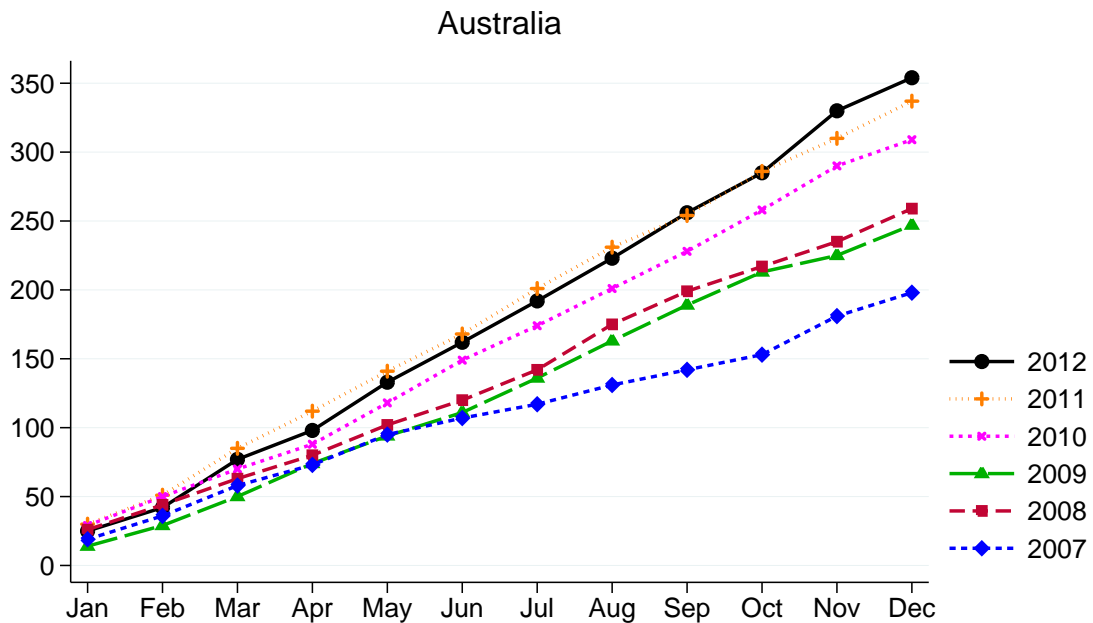


Contents

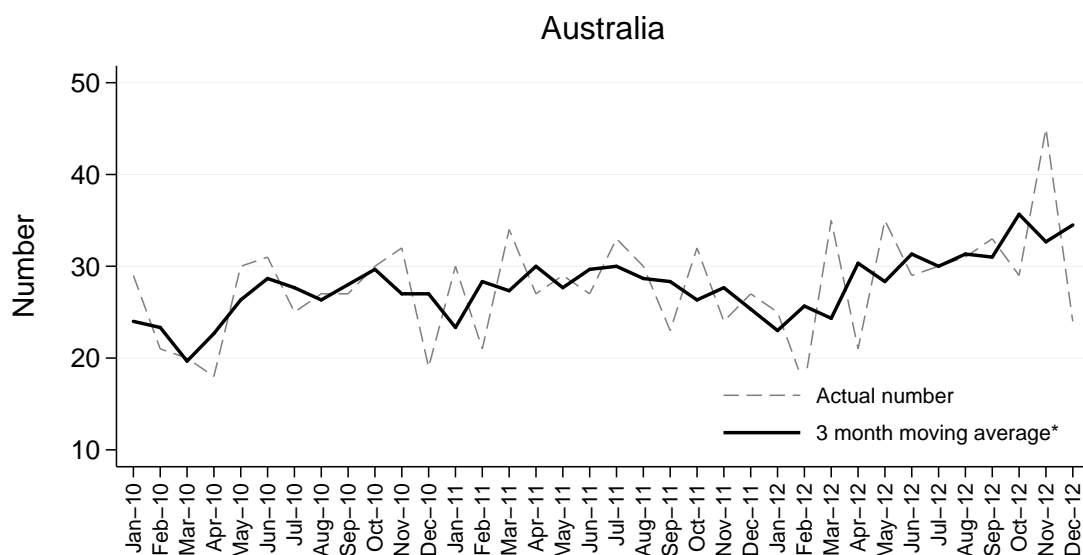
Summary of Deceased Organ Donation	2
Total Actual Deceased Donors	4
Intended Deceased Donors	4
Donors Following Cardiac Death	4
Recipients Transplanted From All Solid Organs	5
Total Recipients	7
Mean Recipients Transplanted Per Deceased Donor	7
Organs Transplanted From All Deceased Donors	8
Total Solid Organs Transplanted	8
Total Organs	10
Mean Organs Transplanted Per Deceased Donor	10
Organs Retrieved and Actually Transplanted From All Donors	11
Organs Retrieved and Actually Transplanted Following Cardiac Death of Donor	14

Summary of Deceased Organ Donation

Actual Donors (Cumulative Incidence) per Month



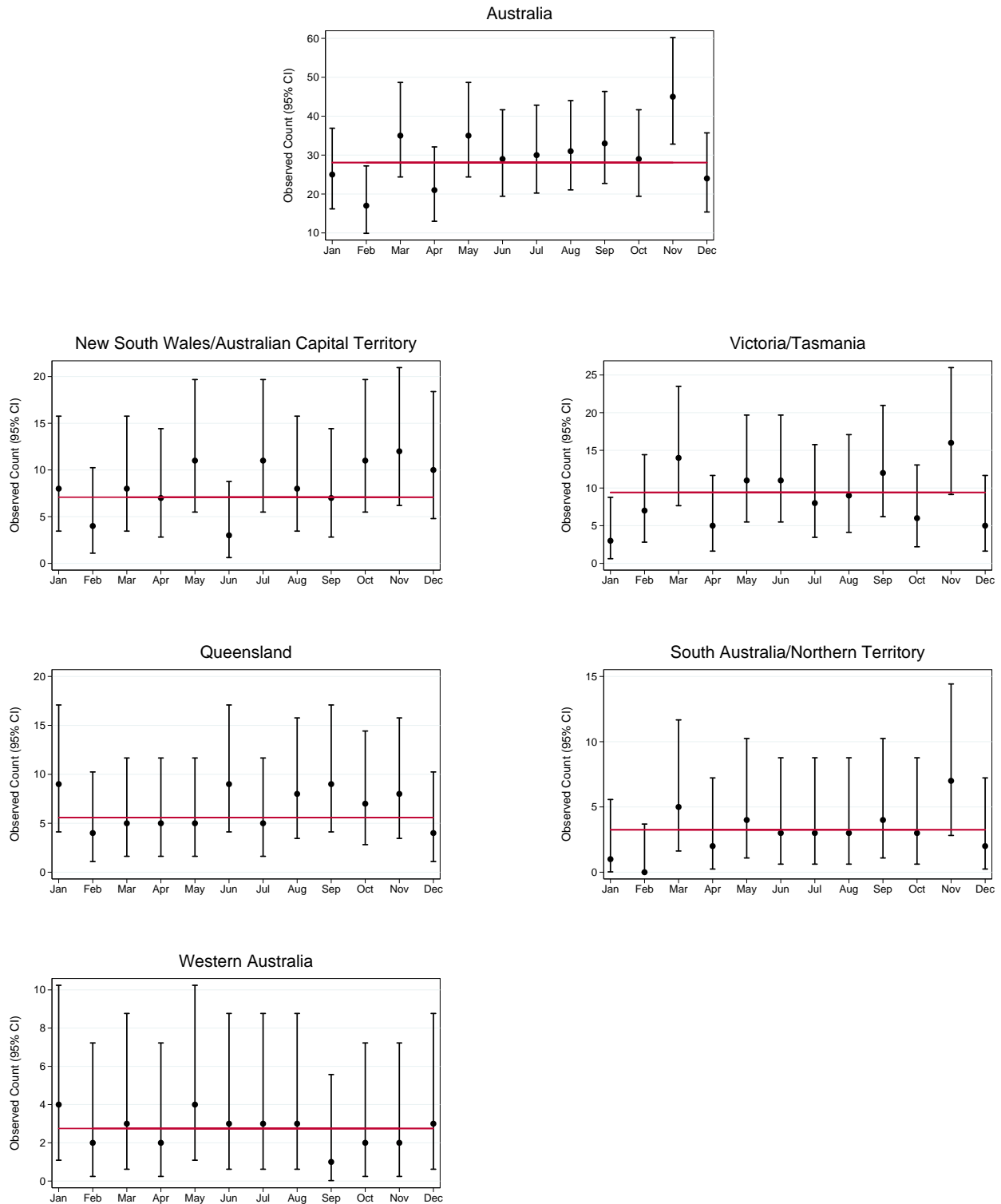
Actual Deceased Donors per Month



*Calculated from the current month, previous month and next month, except the most recent month which is calculated from the previous and current months.

Actual Deceased Donors (95% Confidence Intervals) per Month 2012 by State

95% confidence intervals are exact Poisson intervals.
Note the different y-axis scales for each state.
Reference line is the 2011 monthly average.



All tables are presented by state/territory of donation. This does not relate to the state/territory of transplantation.

Total Actual Deceased Donors

Number of donors (not adjusted for population).

	Jan	Feb	Mar	Apr	May	Jun	Jul	Aug	Sep	Oct	Nov	Dec	Total	DPMP ^{*(1)}	DPMP ^{*(2)}
NSW	7	3	7	5	10	3	10	8	7	9	10	9	88	12.4	12.1
VIC	3	5	10	4	10	10	8	8	9	4	16	5	92	16.4	
QLD	9	4	5	5	5	9	5	8	9	7	8	4	78	17.1	
SA	1	0	2	1	3	3	2	3	4	2	6	2	29	17.5	
WA	4	2	3	2	4	3	3	3	1	2	2	3	32	13.2	
TAS	0	2	4	1	1	1	0	1	3	2	0	0	15	29.3	
NT	0	0	3	1	1	0	1	0	0	1	1	0	8	34.1	
ACT	1	1	1	2	1	0	1	0	0	2	2	1	12	20.3	32.0
AUSTRALIA	25	17	35	21	35	29	30	31	33	29	45	24	354	15.6	

* Donors per million population

June 3101.0 Australian Demographic Statistics (Australian Bureau of Statistics)

(1) NSW population excludes residents of Southern Area Health Service (included in ACT population)

(2) NSW population includes residents of Southern Area Health Service (excluded in ACT population)

Intended Deceased Donors

Consent obtained, but donation did not proceed.

	Jan	Feb	Mar	Apr	May	Jun	Jul	Aug	Sep	Oct	Nov	Dec	Total
NSW	2	0	1	1	2	1	2	2	2	0	2	2	17
VIC	2	2	2	1	1	3	5	2	5	6	3	1	33
QLD	0	2	3	2	2	1	3	0	0	1	1	2	17
SA	1	0	0	0	1	0	0	1	0	0	0	0	3
WA	0	0	0	0	0	0	0	0	0	0	0	3	3
TAS	0	0	0	0	0	0	0	0	0	0	0	0	0
NT	0	0	0	0	0	0	0	0	0	0	0	0	0
ACT	0	0	0	0	0	0	0	0	0	0	0	0	0
AUSTRALIA	5	4	6	4	6	5	10	5	7	7	6	8	73

Donors Following Cardiac Death

The following monthly totals represent the number of donors after cardiac death.

Numbers are included in the TOTAL ACTUAL DONORS count above.

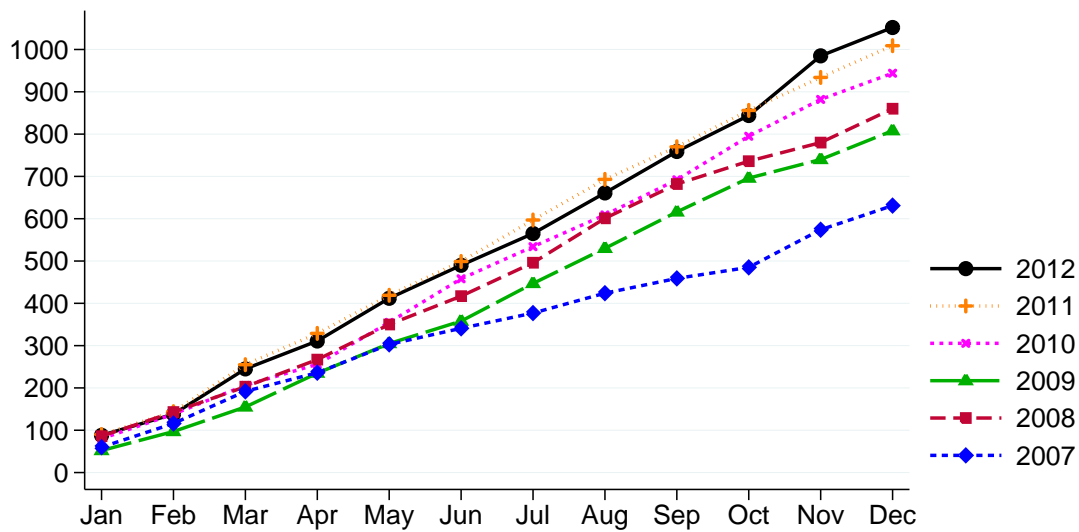
	Jan	Feb	Mar	Apr	May	Jun	Jul	Aug	Sep	Oct	Nov	Dec	Total
NSW	0	0	1	0	2	1	4	2	1	3	2	3	19
VIC	1	3	2	0	4	3	4	1	4	2	6	0	30
QLD	0	2	1	2	1	3	2	1	2	1	1	0	16
SA	0	0	0	0	0	0	0	1	2	0	1	0	4
WA	0	0	0	0	2	0	0	1	0	1	0	1	5
TAS	0	0	0	0	0	0	0	0	0	0	0	0	0
NT	0	0	0	0	0	0	1	0	0	0	0	0	1
ACT	0	0	1	0	0	0	1	0	0	0	0	0	2
AUSTRALIA	1	5	5	2	9	7	12	6	9	7	10	4	77

Recipients Transplanted From All Solid Organs

Recipients of Pancreas Islets, Stomach and Intestines are included.
Recipients of multiple organs are counted once.

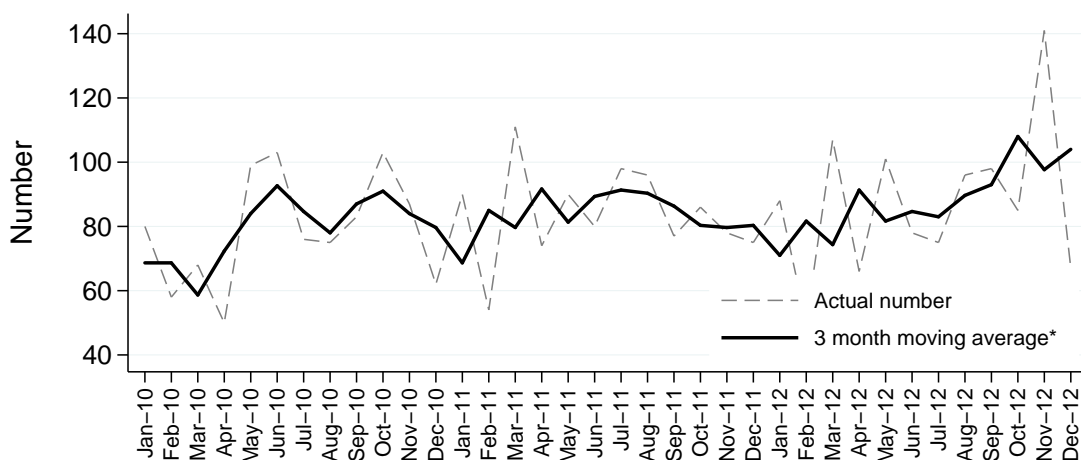
Total Recipients Transplanted (Cumulative Incidence) per Month from All Solid Organs

Australia



Total Recipients Transplanted per Month from All Solid Organs

Australia



*Calculated from the current month, previous month and next month, except the most recent month which is calculated from the previous and current months.

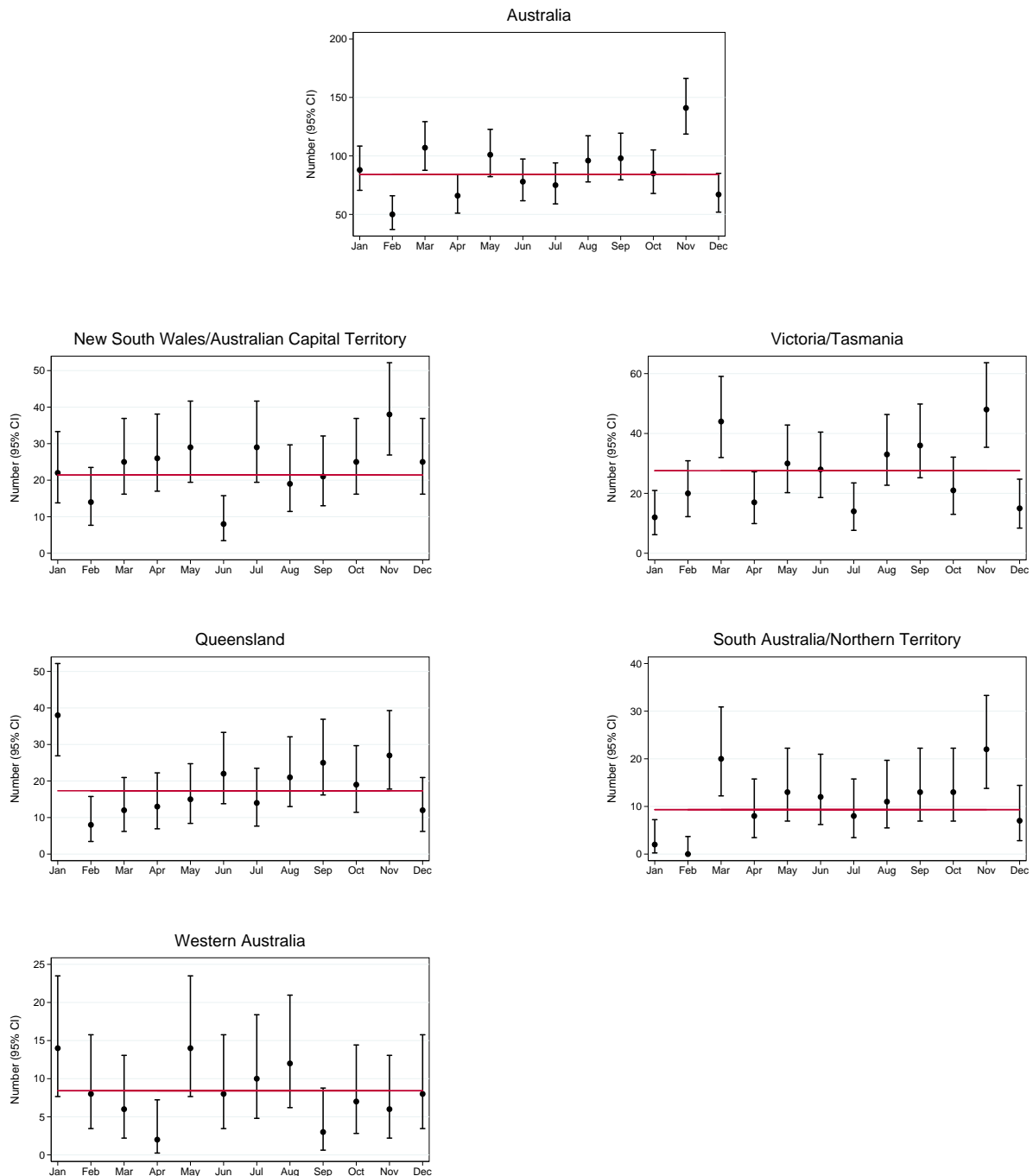
Total Recipients Transplanted from All Solid Organs (95% Confidence Intervals) per Month 2012 by State

State/territory of donation is not related to state/territory of transplantation.

95% confidence intervals are exact Poisson intervals.

Note the different y-axis scales for each state.

Reference line is the 2011 monthly average.





Recipients of Pancreas Islets, Stomach and Intestines are included.

Total Recipients

The following monthly totals represent the number of recipients transplanted with organs from the donors tabulated above.

	Jan	Feb	Mar	Apr	May	Jun	Jul	Aug	Sep	Oct	Nov	Dec	Total
NSW	21	10	21	16	26	8	27	19	21	22	35	24	250
VIC	12	10	32	13	29	26	14	29	28	11	48	15	267
QLD	38	8	12	13	15	22	14	21	25	19	27	12	226
SA	2	0	8	3	11	12	6	11	13	10	17	7	100
WA	14	8	6	2	14	8	10	12	3	7	6	8	98
TAS	0	10	12	4	1	2	0	4	8	10	0	0	51
NT	0	0	12	5	2	0	2	0	0	3	5	0	29
ACT	1	4	4	10	3	0	2	0	0	3	3	1	31
AUSTRALIA	88	50	107	66	101	78	75	96	98	85	141	67	1052

Mean Recipients Transplanted Per Deceased Donor

	Jan	Feb	Mar	Apr	May	Jun	Jul	Aug	Sep	Oct	Nov	Dec	Total
NSW	3.0	3.3	3.0	3.2	2.6	2.7	2.7	2.4	3.0	2.4	3.5	2.7	2.8
VIC	4.0	2.0	3.2	3.3	2.9	2.6	1.8	3.6	3.1	2.8	3.0	3.0	2.9
QLD	4.2	2.0	2.4	2.6	3.0	2.4	2.8	2.6	2.8	2.7	3.4	3.0	2.9
SA	2.0	0.0	4.0	3.0	3.7	4.0	3.0	3.7	3.3	5.0	2.8	3.5	3.4
WA	3.5	4.0	2.0	1.0	3.5	2.7	3.3	4.0	3.0	3.5	3.0	2.7	3.1
TAS	0.0	5.0	3.0	4.0	1.0	2.0	0.0	4.0	2.7	5.0	0.0	0.0	3.4
NT	0.0	0.0	4.0	5.0	2.0	0.0	2.0	0.0	0.0	3.0	5.0	0.0	3.6
ACT	1.0	4.0	4.0	5.0	3.0	0.0	2.0	0.0	0.0	1.5	1.5	1.0	2.6
AUSTRALIA	3.5	2.9	3.1	3.1	2.9	2.7	2.5	3.1	3.0	2.9	3.1	2.8	3.0

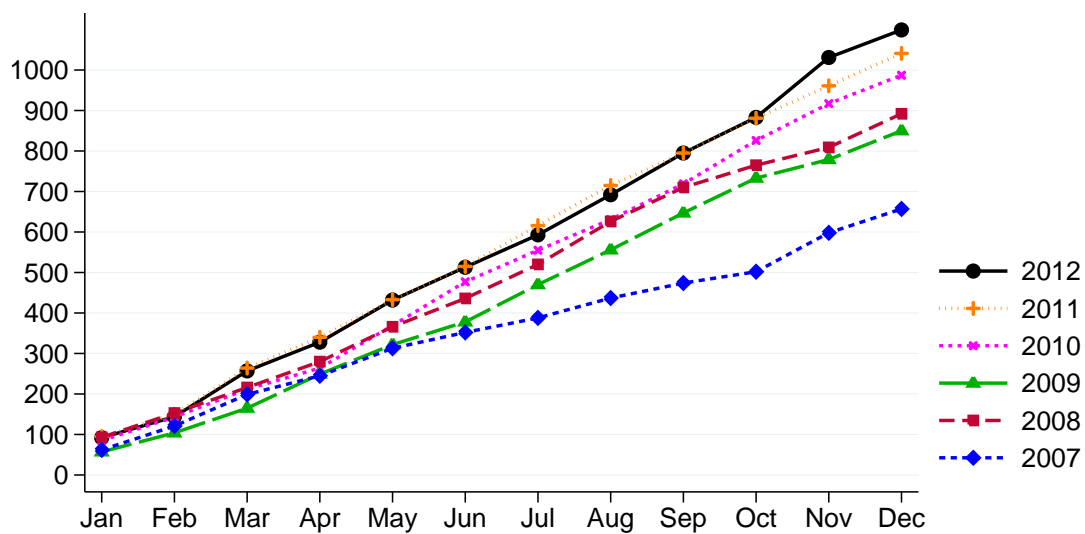
Organs Transplanted From All Deceased Donors

Total Solid Organs Transplanted

Recipients of Pancreas Islets, Stomach and Intestines are included.

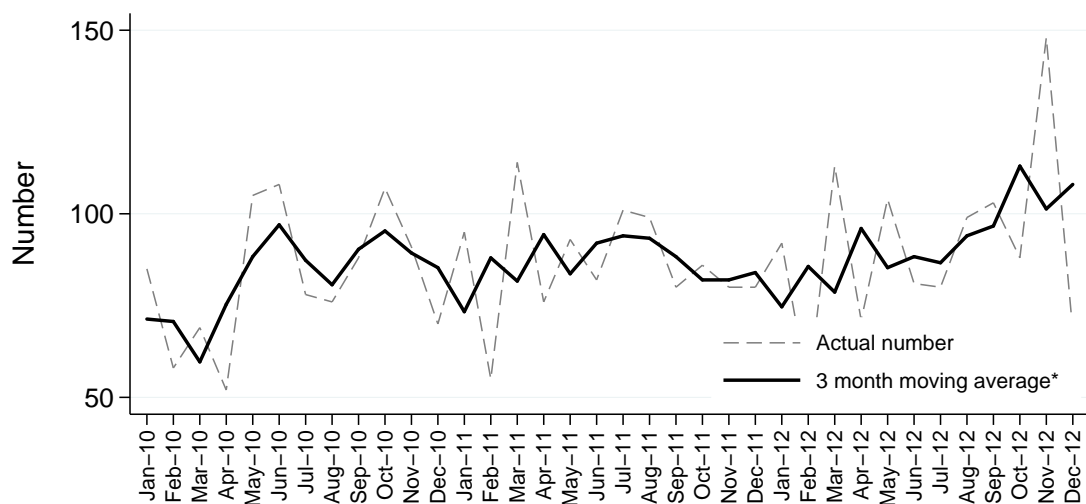
Total Solid Organs Transplanted (Cumulative Incidence) per Month

Australia



Total Solid Organs Transplanted per Month

Australia



*Calculated from the current month, previous month and next month, except the most recent month which is calculated from the previous and current months.

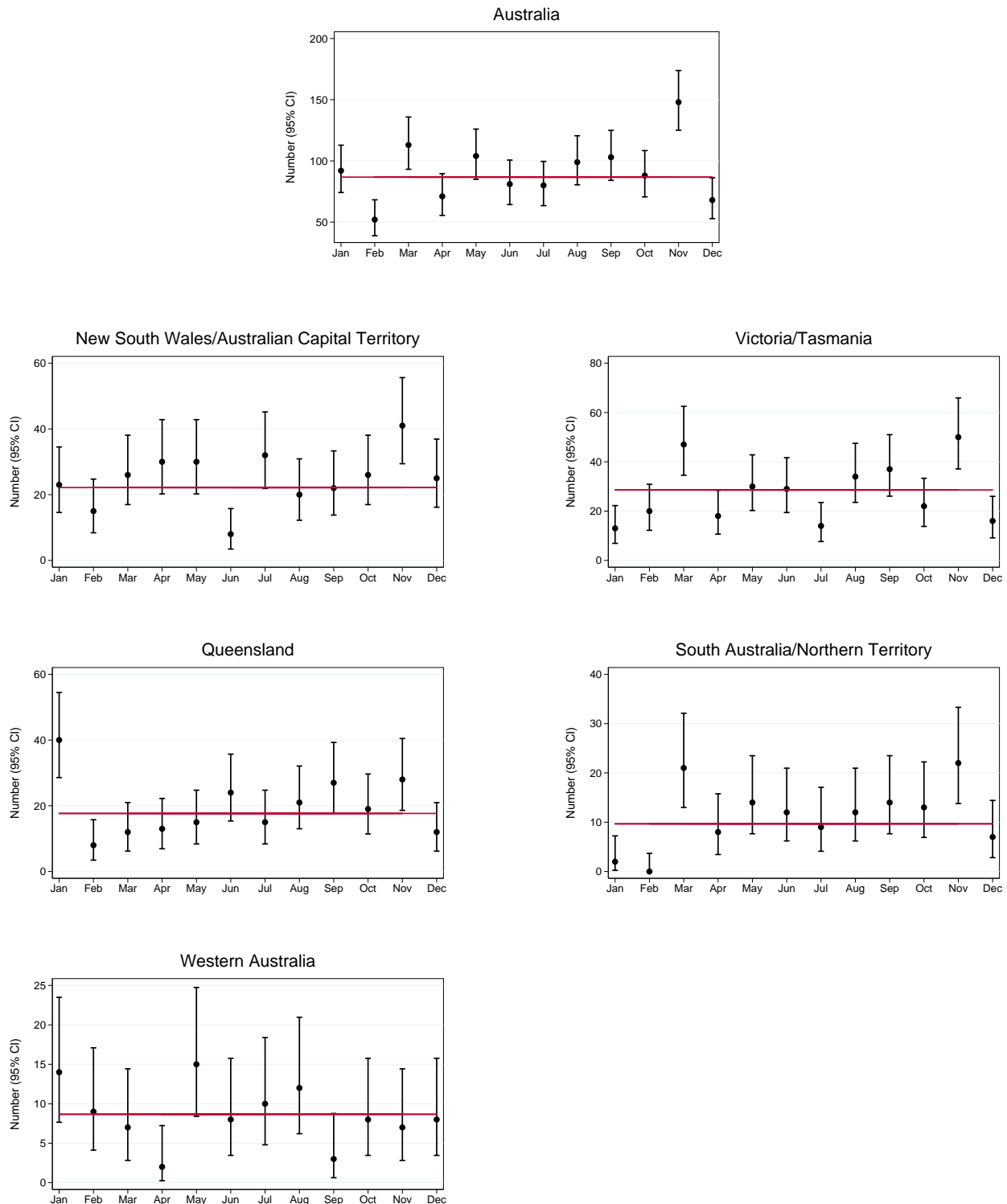
Total Solid Organs Transplanted (95% Confidence Intervals) per Month 2012 by State

State/territory of donation is not related to state/territory of transplantation.

95% confidence intervals are exact Poisson intervals.

Note the different y-axis scales for each state.

Reference line is the 2011 monthly average.





Recipients of Pancreas Islets, Stomach and Intestines are included.

Total Organs

	Jan	Feb	Mar	Apr	May	Jun	Jul	Aug	Sep	Oct	Nov	Dec	Total
NSW	22	11	22	19	27	8	30	20	22	23	38	24	266
VIC	13	10	32	14	29	27	14	29	29	12	50	16	275
QLD	40	8	12	13	15	24	15	21	27	19	28	12	234
SA	2	0	9	3	12	12	7	12	14	10	17	7	105
WA	14	9	7	2	15	8	10	12	3	8	7	8	103
TAS	0	10	15	4	1	2	0	5	8	10	0	0	55
NT	0	0	12	5	2	0	2	0	0	3	5	0	29
ACT	1	4	4	11	3	0	2	0	0	3	3	1	32
AUSTRALIA	92	52	113	71	104	81	80	99	103	88	148	68	1099

Mean Organs Transplanted Per Deceased Donor

	Jan	Feb	Mar	Apr	May	Jun	Jul	Aug	Sep	Oct	Nov	Dec	Total
NSW	3.1	3.7	3.1	3.8	2.7	2.7	3.0	2.5	3.1	2.6	3.8	2.7	3.0
VIC	4.3	2.0	3.2	3.5	2.9	2.7	1.8	3.6	3.2	3.0	3.1	3.2	3.0
QLD	4.4	2.0	2.4	2.6	3.0	2.7	3.0	2.6	3.0	2.7	3.5	3.0	3.0
SA	2.0	0.0	4.5	3.0	4.0	4.0	3.5	4.0	3.5	5.0	2.8	3.5	3.6
WA	3.5	4.5	2.3	1.0	3.8	2.7	3.3	4.0	3.0	4.0	3.5	2.7	3.2
TAS	0.0	5.0	3.8	4.0	1.0	2.0	0.0	5.0	2.7	5.0	0.0	0.0	3.7
NT	0.0	0.0	4.0	5.0	2.0	0.0	2.0	0.0	0.0	3.0	5.0	0.0	3.6
ACT	1.0	4.0	4.0	5.5	3.0	0.0	2.0	0.0	0.0	1.5	1.5	1.0	2.7
AUSTRALIA	3.7	3.1	3.2	3.4	3.0	2.8	2.7	3.2	3.1	3.0	3.3	2.8	3.1

Organs Retrieved and Actually Transplanted From All Donors

The following monthly totals of organs represent the number of recipients from all deceased donors. Multiple transplants (other than Heart/Lung) will be counted under each of the organs.

Kidney

Number of recipients includes combined transplant (eg kidney/pancreas)



	Jan	Feb	Mar	Apr	May	Jun	Jul	Aug	Sep	Oct	Nov	Dec	Total
NSW	11	6	14	10	18	4	16	12	11	11	17	14	144
VIC	6	8	18	8	19	14	7	16	18	8	26	10	158
QLD	15	6	8	8	10	13	10	12	14	14	16	8	134
SA	2	0	4	2	6	4	4	6	8	4	9	4	53
WA	8	4	5	1	8	5	6	6	2	4	4	5	58
TAS	0	4	6	2	0	2	0	2	5	4	0	0	25
NT	0	0	6	2	2	0	2	0	0	2	2	0	16
ACT	1	2	2	4	2	0	2	0	0	2	2	1	18
AUSTRALIA	43	30	63	37	65	42	47	54	58	49	76	42	606

Liver



	Jan	Feb	Mar	Apr	May	Jun	Jul	Aug	Sep	Oct	Nov	Dec	Total
NSW	4	2	4	3	5	2	7	5	5	8	7	5	57
VIC	2	1	7	2	3	7	3	7	5	1	13	3	54
QLD	11	0	2	3	4	6	2	5	6	2	7	4	52
SA	0	0	2	1	2	4	1	3	2	2	4	2	23
WA	3	2	2	1	2	2	1	2	1	1	1	2	20
TAS	0	2	2	1	1	0	0	1	1	2	0	0	10
NT	0	0	3	1	0	0	0	0	0	1	1	0	6
ACT	0	1	1	3	1	0	0	0	0	1	1	0	8
AUSTRALIA	20	8	23	15	18	21	14	23	20	18	34	16	230

Heart



	Jan	Feb	Mar	Apr	May	Jun	Jul	Aug	Sep	Oct	Nov	Dec	Total
NSW	1	1	0	2	1	1	0	0	2	1	5	2	16
VIC	1	0	2	1	2	0	1	3	1	1	1	0	13
QLD	7	0	0	1	1	1	1	1	3	1	1	0	17
SA	0	0	1	0	1	2	0	1	0	1	1	1	8
WA	1	2	0	0	2	0	1	1	0	1	1	1	10
TAS	0	1	1	0	0	0	0	0	0	2	0	0	4
NT	0	0	0	1	0	0	0	0	0	0	1	0	2
ACT	0	0	0	2	0	0	0	0	0	0	0	0	2
AUSTRALIA	10	4	4	7	7	4	3	6	6	7	10	4	72

Heart/Lung

	Jan	Feb	Mar	Apr	May	Jun	Jul	Aug	Sep	Oct	Nov	Dec	Total
NSW	0	0	1	0	0	0	0	0	0	1	0	0	2
VIC	0	0	0	0	0	0	0	0	0	0	0	0	0
QLD	0	0	0	0	0	0	0	1	0	0	1	0	2
SA	0	0	0	0	0	0	0	0	0	0	0	0	0
WA	0	0	0	0	0	0	0	0	0	0	0	0	0
TAS	0	0	0	0	0	0	0	0	0	0	0	0	0
NT	0	0	0	0	0	0	0	0	0	0	0	0	0
ACT	0	0	0	0	0	0	0	0	0	0	0	0	0
AUSTRALIA	0	0	1	0	0	0	0	1	0	1	1	0	4

Lung

	Jan	Feb	Mar	Apr	May	Jun	Jul	Aug	Sep	Oct	Nov	Dec	Total
NSW	3	1	2	2	2	1	5	2	3	1	6	3	31
VIC	3	1	5	2	5	5	3	3	4	1	8	2	42
QLD	6	2	2	1	0	4	1	2	2	2	3	0	25
SA	0	0	1	0	2	2	1	1	3	2	3	0	15
WA	2	1	0	0	2	1	2	3	0	1	0	0	12
TAS	0	2	3	1	0	0	0	1	2	2	0	0	11
NT	0	0	3	1	0	0	0	0	0	0	1	0	5
ACT	0	1	1	1	0	0	0	0	0	0	0	0	3
AUSTRALIA	14	8	17	8	11	13	12	12	14	9	21	5	144

Pancreas

Pancreas figures relate to the transplantation of the whole organ and not those used for islets.

	Jan	Feb	Mar	Apr	May	Jun	Jul	Aug	Sep	Oct	Nov	Dec	Total
NSW	1	1	1	2	1	0	2	1	1	1	3	0	14
VIC	1	0	0	1	0	1	0	0	1	1	2	1	8
QLD	1	0	0	0	0	0	1	0	2	0	0	0	4
SA	0	0	1	0	1	0	1	1	1	0	0	0	5
WA	0	0	0	0	1	0	0	0	0	1	1	0	3
TAS	0	0	2	0	0	0	0	1	0	0	0	0	3
NT	0	0	0	0	0	0	0	0	0	0	0	0	0
ACT	0	0	0	1	0	0	0	0	0	0	0	0	1
AUSTRALIA	3	1	4	4	3	1	4	3	5	3	6	1	38



Pancreas Islets

	Jan	Feb	Mar	Apr	May	Jun	Jul	Aug	Sep	Oct	Nov	Dec	Total
NSW	2	0	0	0	0	0	0	0	0	0	0	0	2
VIC	0	0	0	0	0	0	0	0	0	0	0	0	0
QLD	0	0	0	0	0	0	0	0	0	0	0	0	0
SA	0	0	0	0	0	0	0	0	0	1	0	0	1
WA	0	0	0	0	0	0	0	0	0	0	0	0	0
TAS	0	1	0	0	0	0	0	0	0	0	0	0	1
NT	0	0	0	0	0	0	0	0	0	0	0	0	0
ACT	0	0	0	0	0	0	0	0	0	0	0	0	0
AUSTRALIA	2	1	0	0	0	0	0	0	0	1	0	0	4

Intestine

	Jan	Feb	Mar	Apr	May	Jun	Jul	Aug	Sep	Oct	Nov	Dec	Total
NSW	0	0	0	0	0	0	0	0	0	0	0	0	0
VIC	0	0	0	0	0	0	0	0	0	0	0	0	0
QLD	0	0	0	0	0	0	0	0	0	0	0	0	0
SA	0	0	0	0	0	0	0	0	0	0	0	0	0
WA	0	0	0	0	0	0	0	0	0	0	0	0	0
TAS	0	0	1	0	0	0	0	0	0	0	0	0	1
NT	0	0	0	0	0	0	0	0	0	0	0	0	0
ACT	0	0	0	0	0	0	0	0	0	0	0	0	0
AUSTRALIA	0	0	1	0	0	0	0	0	0	0	0	0	1



Organs Retrieved and Actually Transplanted Following Cardiac Death of Donor

The following monthly totals of organs represent the number of recipients from the donors after cardiac death tabulated on page 3. Numbers are included in the ALL DONORS count on the previous pages. Multiple transplants will be counted under each of the organs.

Kidney

Number of recipients includes combined transplant (eg kidney/pancreas)

	Jan	Feb	Mar	Apr	May	Jun	Jul	Aug	Sep	Oct	Nov	Dec	Total
NSW	0	0	2	0	4	0	6	4	1	3	3	4	27
VIC	2	6	4	0	7	5	4	2	8	4	7	0	49
QLD	0	4	2	4	2	6	4	2	2	2	2	0	30
SA	0	0	0	0	0	0	0	2	4	0	1	0	7
WA	0	0	0	0	4	0	0	2	0	2	0	2	10
TAS	0	0	0	0	0	0	0	0	0	0	0	0	0
NT	0	0	0	0	0	0	2	0	0	0	0	0	2
ACT	0	0	2	0	0	0	2	0	0	0	0	0	4
AUSTRALIA	2	10	10	4	17	11	18	12	15	11	13	6	129

Liver

	Jan	Feb	Mar	Apr	May	Jun	Jul	Aug	Sep	Oct	Nov	Dec	Total
NSW	0	0	0	0	0	1	1	1	0	0	0	0	3
VIC	0	0	1	0	0	2	0	0	1	0	3	0	7
QLD	0	0	0	1	0	2	0	0	1	0	1	0	5
SA	0	0	0	0	0	0	0	0	1	0	0	0	1
WA	0	0	0	0	0	0	0	0	0	0	0	0	0
TAS	0	0	0	0	0	0	0	0	0	0	0	0	0
NT	0	0	0	0	0	0	0	0	0	0	0	0	0
ACT	0	0	1	0	0	0	0	0	0	0	0	0	1
AUSTRALIA	0	0	2	1	0	5	1	1	3	0	4	0	17

Lung

	Jan	Feb	Mar	Apr	May	Jun	Jul	Aug	Sep	Oct	Nov	Dec	Total
NSW	0	0	0	0	1	0	3	1	0	0	1	0	6
VIC	1	1	1	0	2	2	1	0	0	1	3	0	12
QLD	0	0	0	0	0	2	0	0	1	0	1	0	4
SA	0	0	0	0	0	0	0	0	1	0	0	0	1
WA	0	0	0	0	0	0	0	1	0	1	0	0	2
TAS	0	0	0	0	0	0	0	0	0	0	0	0	0
NT	0	0	0	0	0	0	0	0	0	0	0	0	0
ACT	0	0	1	0	0	0	0	0	0	0	0	0	1
AUSTRALIA	1	1	2	0	3	4	4	2	2	2	5	0	26



Pancreas

Pancreas figures relate to the transplantation of the whole organ and not those used for islets.

	Jan	Feb	Mar	Apr	May	Jun	Jul	Aug	Sep	Oct	Nov	Dec	Total
NSW	0	0	0	0	0	0	1	0	0	0	0	0	1
VIC	0	0	0	0	0	0	0	0	0	0	0	0	0
QLD	0	0	0	0	0	0	0	0	0	0	0	0	0
SA	0	0	0	0	0	0	0	0	0	0	0	0	0
WA	0	0	0	0	0	0	0	0	0	0	0	0	0
TAS	0	0	0	0	0	0	0	0	0	0	0	0	0
NT	0	0	0	0	0	0	0	0	0	0	0	0	0
ACT	0	0	0	0	0	0	0	0	0	0	0	0	0
AUSTRALIA	0	0	0	0	0	0	1	0	0	0	0	0	1