



Monthly Report on Deceased Organ Donation in Australia

December 2011

Produced 3 February 2012 12:03 PM
Data Received by ANZOD up to 2 February 2012

Produced in conjunction with



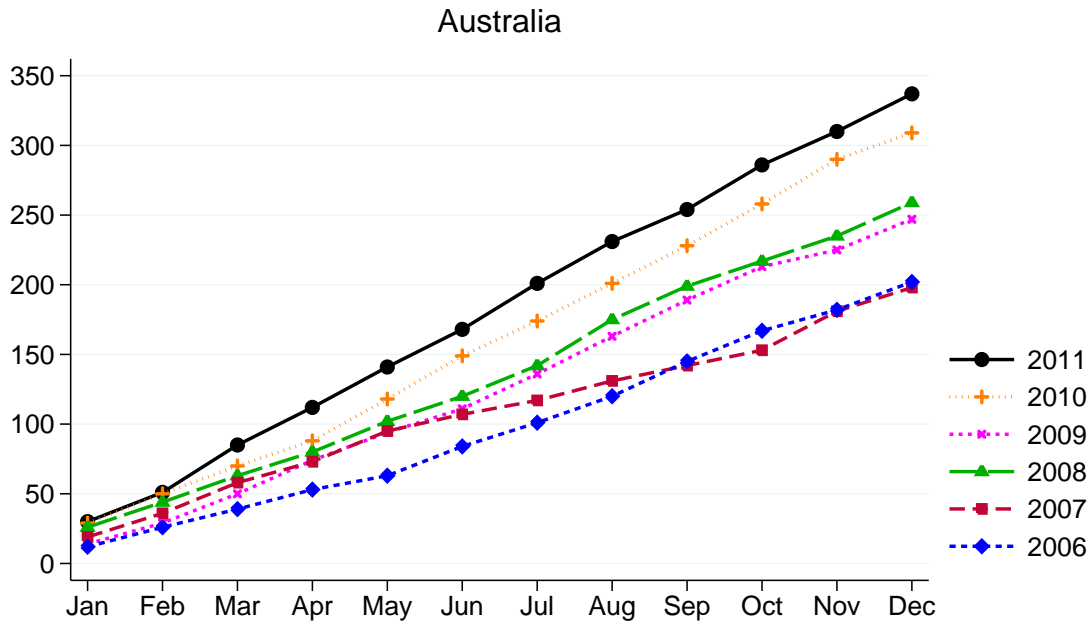


Contents

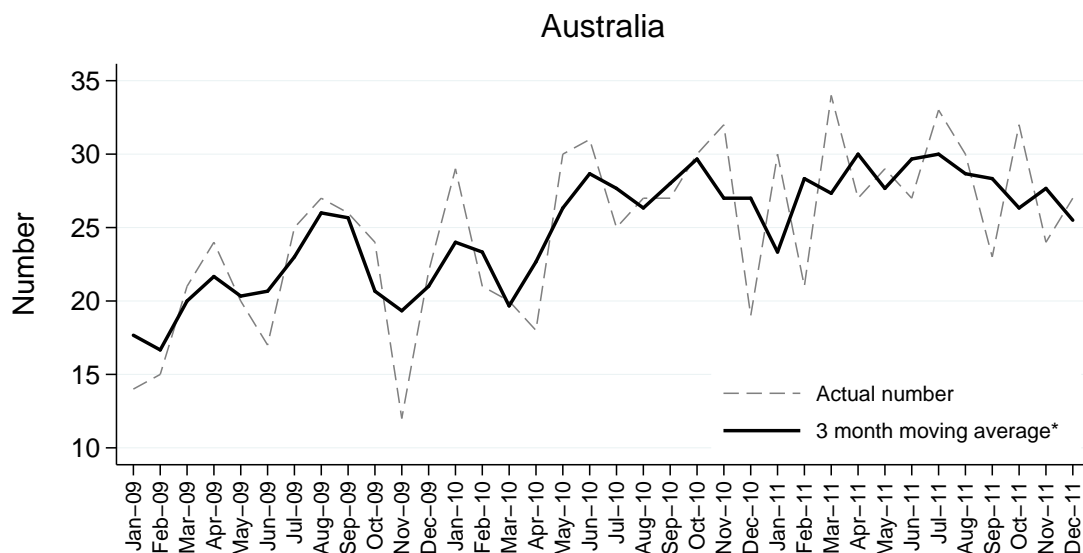
Summary of Deceased Organ Donation	2
Total Actual Deceased Donors	4
Intended Deceased Donors	4
Donors Following Cardiac Death	4
Recipients Transplanted From All Solid Organs	5
Total Recipients	8
Mean Recipients Transplanted Per Deceased Donor	8
Organs Transplanted From All Deceased Donors	9
Total Solid Organs Transplanted	9
Total Organs	11
Mean Organs Transplanted Per Deceased Donor	11
Organs Retrieved and Actually Transplanted From All Donors	12
Organs Retrieved and Actually Transplanted Following Cardiac Death of Donor	15

Summary of Deceased Organ Donation

Actual Donors (Cumulative Incidence) per Month



Actual Deceased Donors per Month



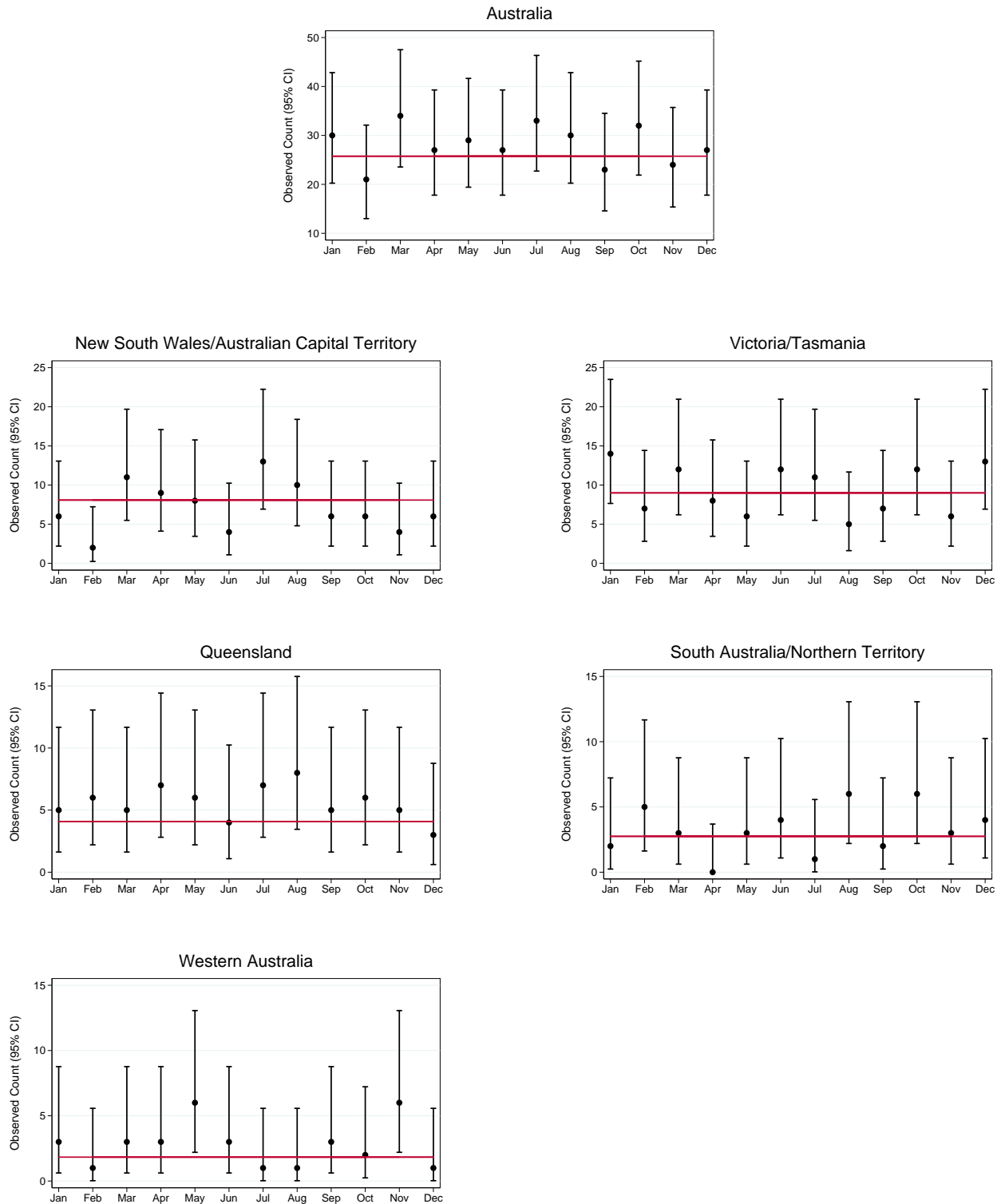
*Calculated from the current month, previous month and next month, except the most recent month which is calculated from the previous and current months.

Actual Deceased Donors (95% Confidence Intervals) per Month 2011 by State

95% confidence intervals are exact Poisson intervals.

Note the different y-axis scales for each state.

Reference line is the 2010 monthly average.



All tables are presented by state/territory of donation. This does not relate to the state/territory of transplantation.

Total Actual Deceased Donors

Number of donors (not adjusted for population).

	Jan	Feb	Mar	Apr	May	Jun	Jul	Aug	Sep	Oct	Nov	Dec	Total	DPMP ^{*(1)}	DPMP ^{*(2)}
NSW	6	2	10	8	8	2	13	9	4	6	3	6	77	10.9	10.5
VIC	13	7	12	8	6	11	11	5	7	11	5	11	107	19.0	
QLD	5	6	5	7	6	4	7	8	5	6	5	3	67	14.6	
SA	2	5	3	0	3	4	1	5	2	6	3	1	35	21.1	
WA	3	1	3	3	6	3	1	1	3	2	6	1	33	14.1	
TAS	1	0	0	0	0	1	0	0	0	1	1	2	6	11.8	
NT	0	0	0	0	0	0	0	1	0	0	0	3	4	17.4	
ACT	0	0	1	1	0	2	0	1	2	0	1	0	8	13.6	21.9
AUSTRALIA	30	21	34	27	29	27	33	30	23	32	24	27	337	14.9	

* Donors per million population

June 3101.0 Australian Demographic Statistics (Australian Bureau of Statistics)

(1) NSW population excludes residents of Southern Area Health Service (included in ACT population)

(2) NSW population includes residents of Southern Area Health Service (excluded in ACT population)

Intended Deceased Donors

Consent obtained, but donation did not proceed.

	Jan	Feb	Mar	Apr	May	Jun	Jul	Aug	Sep	Oct	Nov	Dec	Total
NSW	1	1	1	1	2	1	1	1	0	0	1	1	11
VIC	1	1	0	1	4	4	2	2	3	2	4	0	24
QLD	2	0	0	1	0	1	0	1	2	0	1	0	8
SA	0	0	0	0	0	0	0	1	1	0	1	1	4
WA	0	0	0	0	1	2	0	0	0	0	0	0	3
TAS	0	0	0	0	0	0	0	0	0	0	0	0	0
NT	0	0	0	0	0	0	0	0	0	0	0	0	0
ACT	0	0	0	0	0	0	0	0	1	0	0	0	1
AUSTRALIA	4	2	1	3	7	8	3	5	7	2	7	2	51

Donors Following Cardiac Death

The following monthly totals represent the number of donors after cardiac death.

Numbers are included in the TOTAL ACTUAL DONORS count above.

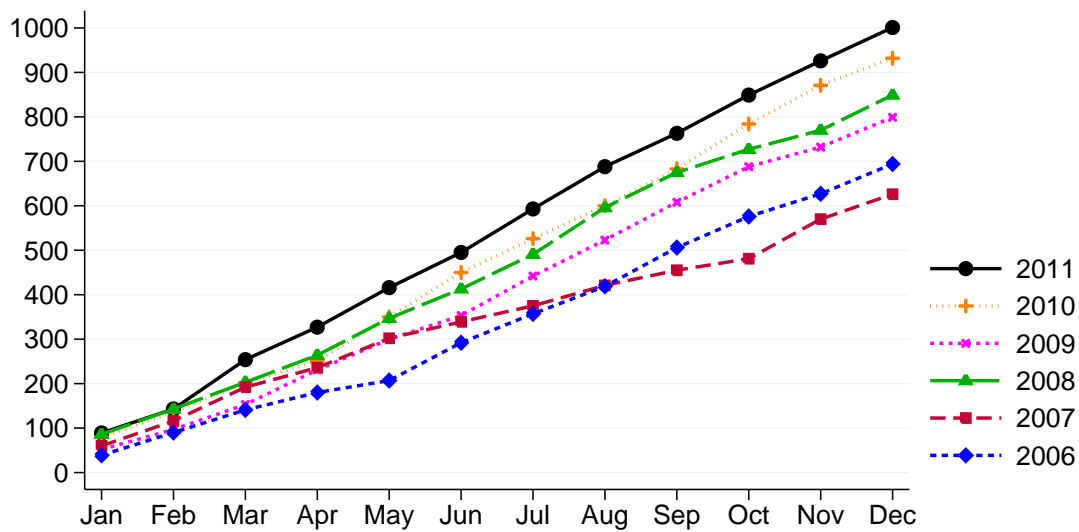
	Jan	Feb	Mar	Apr	May	Jun	Jul	Aug	Sep	Oct	Nov	Dec	Total
NSW	2	1	3	2	2	0	2	3	1	1	0	1	18
VIC	4	2	3	3	2	5	3	1	2	2	1	4	32
QLD	0	1	1	1	1	2	2	3	2	3	2	0	18
SA	0	0	2	0	0	0	0	1	1	2	1	1	8
WA	0	1	0	0	2	0	0	0	0	0	3	1	7
TAS	0	0	0	0	0	0	0	0	0	0	0	0	0
NT	0	0	0	0	0	0	0	1	0	0	0	0	1
ACT	0	0	0	0	0	2	0	0	0	0	0	0	2
AUSTRALIA	6	5	9	6	7	9	7	9	6	8	7	7	86

Recipients Transplanted From All Solid Organs

Tissue and pancreas islet recipients are not included.
Recipients of multiple organs are counted once.

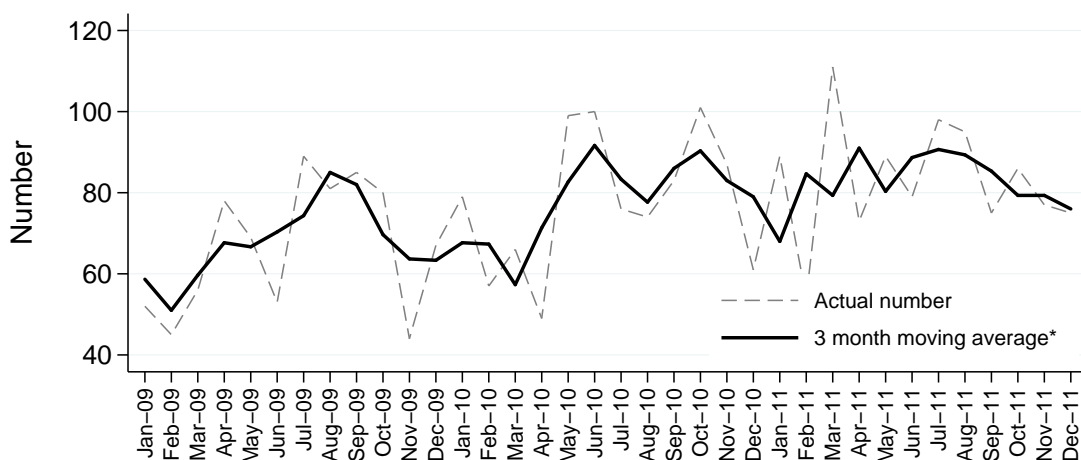
Total Recipients Transplanted (Cumulative Incidence) per Month from All Solid Organs

Australia



Total Recipients Transplanted per Month from All Solid Organs

Australia



*Calculated from the current month, previous month and next month, except the most recent month which is calculated from the previous and current months.

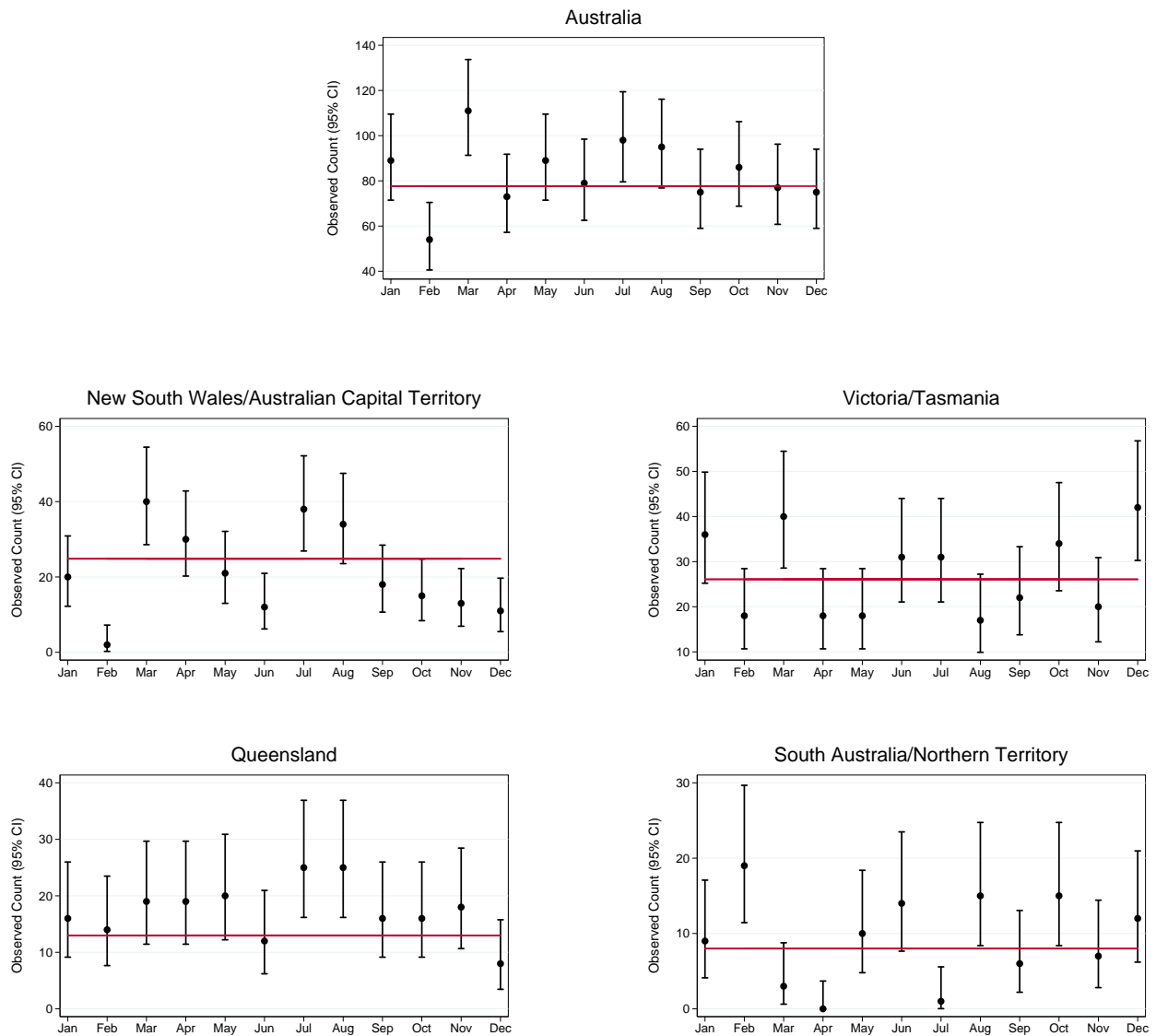
Total Recipients Transplanted from All Solid Organs (95% Confidence Intervals) per Month 2011 by State

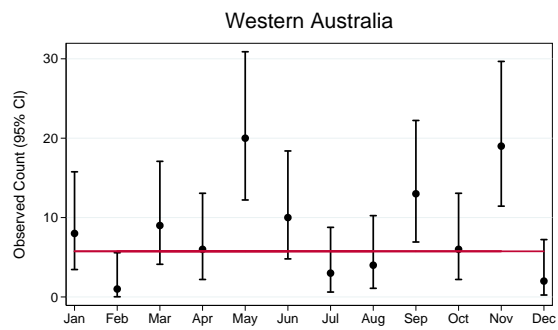
State/territory of donation is not related to state/territory of transplantation.

95% confidence intervals are exact Poisson intervals.

Note the different y-axis scales for each state.

Reference line is the 2010 monthly average.







Total Recipients

The following monthly totals represent the number of recipients transplanted with organs from the donors tabulated above.

	Jan	Feb	Mar	Apr	May	Jun	Jul	Aug	Sep	Oct	Nov	Dec	Total
NSW	20	2	37	27	21	6	38	29	14	15	8	11	228
VIC	34	18	40	18	18	30	31	17	22	30	16	35	309
QLD	16	14	19	19	20	12	25	25	16	16	18	8	208
SA	9	19	3	0	10	14	1	12	6	15	7	3	99
WA	8	1	9	6	20	10	3	4	13	6	19	2	101
TAS	2	0	0	0	0	1	0	0	0	4	4	7	18
NT	0	0	0	0	0	0	0	3	0	0	0	9	12
ACT	0	0	3	3	0	6	0	5	4	0	5	0	26
AUSTRALIA	89	54	111	73	89	79	98	95	75	86	77	75	1001

Mean Recipients Transplanted Per Deceased Donor

	Jan	Feb	Mar	Apr	May	Jun	Jul	Aug	Sep	Oct	Nov	Dec	Total
NSW	3.3	1.0	3.7	3.4	2.6	3.0	2.9	3.2	3.5	2.5	2.7	1.8	3.0
VIC	2.6	2.6	3.3	2.3	3.0	2.7	2.8	3.4	3.1	2.7	3.2	3.2	2.9
QLD	3.2	2.3	3.8	2.7	3.3	3.0	3.6	3.1	3.2	2.7	3.6	2.7	3.1
SA	4.5	3.8	1.0	0.0	3.3	3.5	1.0	2.4	3.0	2.5	2.3	3.0	2.8
WA	2.7	1.0	3.0	2.0	3.3	3.3	3.0	4.0	4.3	3.0	3.2	2.0	3.1
TAS	2.0	0.0	0.0	0.0	0.0	1.0	0.0	0.0	0.0	4.0	4.0	3.5	3.0
NT	0.0	0.0	0.0	0.0	0.0	0.0	0.0	3.0	0.0	0.0	0.0	3.0	3.0
ACT	0.0	0.0	3.0	3.0	0.0	3.0	0.0	5.0	2.0	0.0	5.0	0.0	3.3
AUSTRALIA	3.0	2.6	3.3	2.7	3.1	2.9	3.0	3.2	3.3	2.7	3.2	2.8	3.0

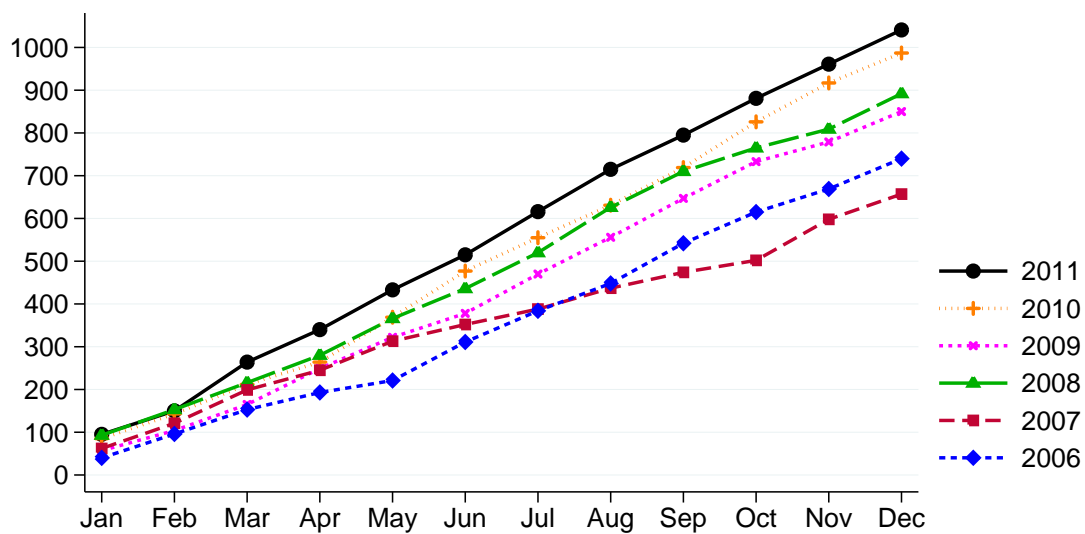
Organs Transplanted From All Deceased Donors

Total Solid Organs Transplanted

Tissue and pancreas islet recipients are not included.

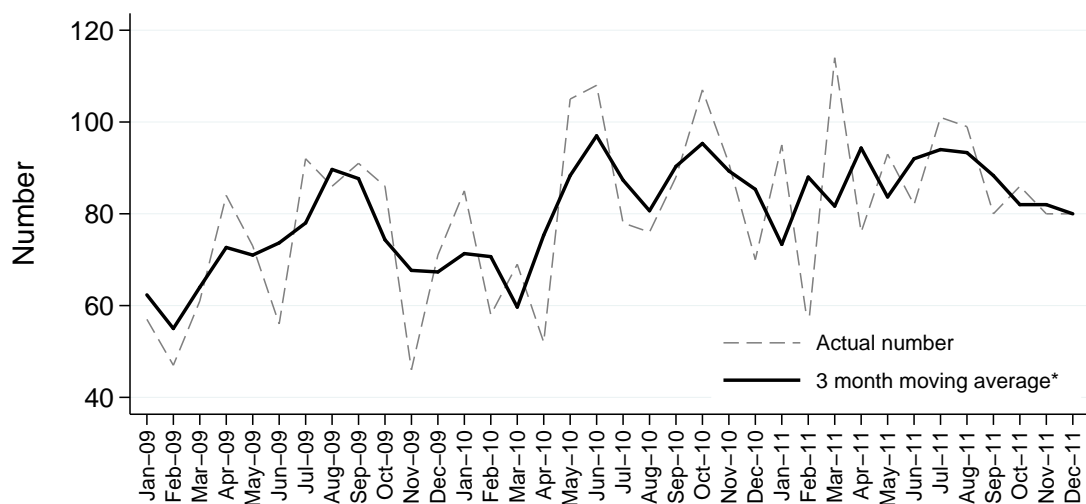
Total Solid Organs Transplanted (Cumulative Incidence) per Month

Australia



Total Solid Organs Transplanted per Month

Australia



*Calculated from the current month, previous month and next month, except the most recent month which is calculated from the previous and current months.

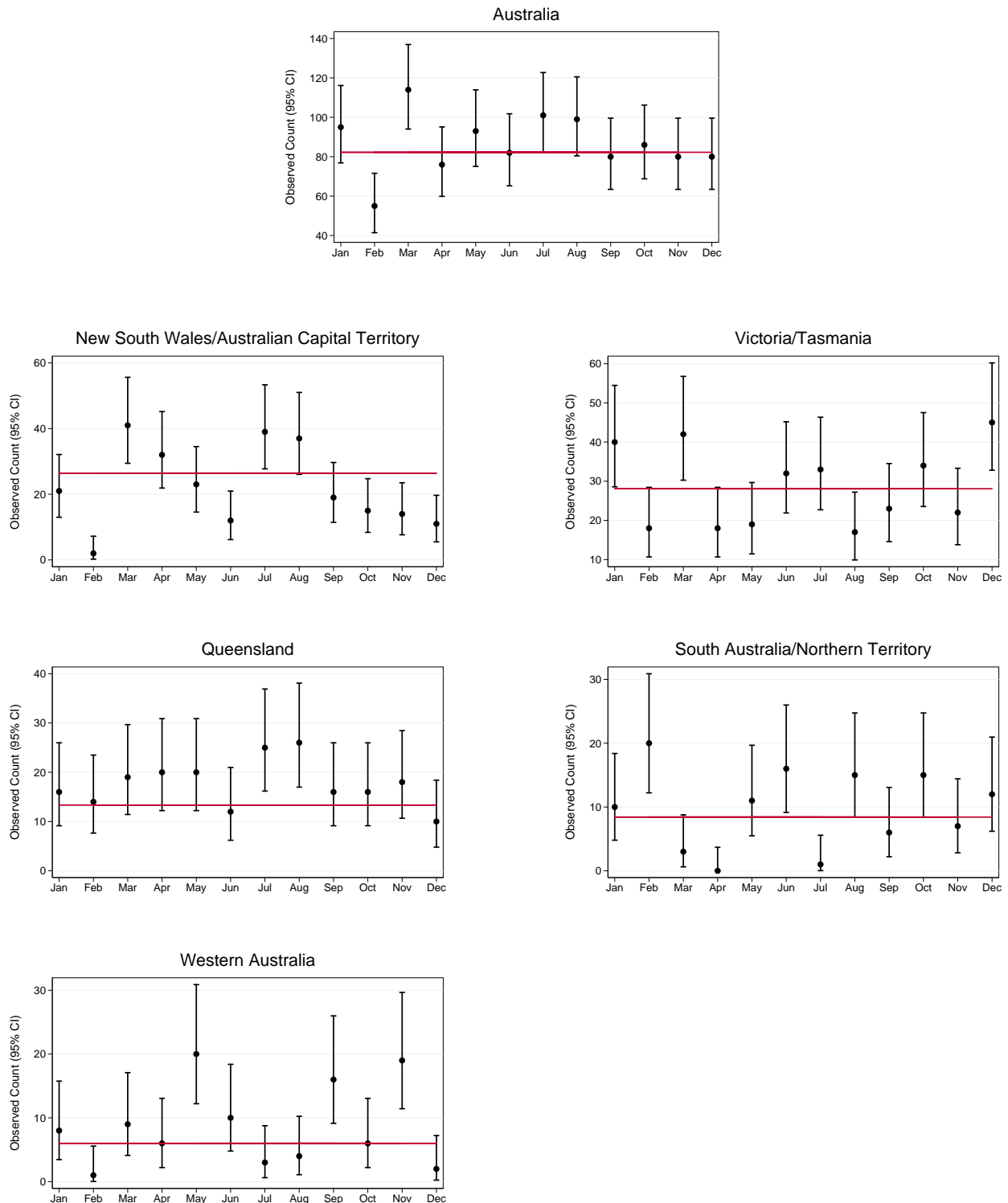
Total Solid Organs Transplanted (95% Confidence Intervals) per Month 2011 by State

State/territory of donation is not related to state/territory of transplantation.

95% confidence intervals are exact Poisson intervals.

Note the different y-axis scales for each state.

Reference line is the 2010 monthly average.





Total Organs

	Jan	Feb	Mar	Apr	May	Jun	Jul	Aug	Sep	Oct	Nov	Dec	Total
NSW	21	2	38	29	23	6	39	32	15	15	8	11	239
VIC	37	18	42	18	19	31	33	17	23	30	17	37	322
QLD	16	14	19	20	20	12	25	26	16	16	18	10	212
SA	10	20	3	0	11	16	1	12	6	15	7	3	104
WA	8	1	9	6	20	10	3	4	16	6	19	2	104
TAS	3	0	0	0	0	1	0	0	0	4	5	8	21
NT	0	0	0	0	0	0	0	3	0	0	0	9	12
ACT	0	0	3	3	0	6	0	5	4	0	6	0	27
AUSTRALIA	95	55	114	76	93	82	101	99	80	86	80	80	1041

Mean Organs Transplanted Per Deceased Donor

	Jan	Feb	Mar	Apr	May	Jun	Jul	Aug	Sep	Oct	Nov	Dec	Total
NSW	3.5	1.0	3.8	3.6	2.9	3.0	3.0	3.6	3.8	2.5	2.7	1.8	3.1
VIC	2.8	2.6	3.5	2.3	3.2	2.8	3.0	3.4	3.3	2.7	3.4	3.4	3.0
QLD	3.2	2.3	3.8	2.9	3.3	3.0	3.6	3.3	3.2	2.7	3.6	3.3	3.2
SA	5.0	4.0	1.0	0.0	3.7	4.0	1.0	2.4	3.0	2.5	2.3	3.0	3.0
WA	2.7	1.0	3.0	2.0	3.3	3.3	3.0	4.0	5.3	3.0	3.2	2.0	3.2
TAS	3.0	0.0	0.0	0.0	0.0	1.0	0.0	0.0	0.0	4.0	5.0	4.0	3.5
NT	0.0	0.0	0.0	0.0	0.0	0.0	0.0	3.0	0.0	0.0	0.0	3.0	3.0
ACT	0.0	0.0	3.0	3.0	0.0	3.0	0.0	5.0	2.0	0.0	6.0	0.0	3.4
AUSTRALIA	3.2	2.6	3.4	2.8	3.2	3.0	3.1	3.3	3.5	2.7	3.3	3.0	3.1



Organs Retrieved and Actually Transplanted From All Donors

The following monthly totals of organs represent the number of recipients from all deceased donors. Multiple transplants (other than Heart/Lung) will be counted under each of the organs.

Kidney

Number of recipients includes combined transplant (eg kidney/pancreas)

	Jan	Feb	Mar	Apr	May	Jun	Jul	Aug	Sep	Oct	Nov	Dec	Total
NSW	11	2	18	13	13	4	21	15	8	11	6	7	129
VIC	19	8	21	13	12	16	19	9	12	19	10	19	177
QLD	10	8	10	12	11	7	12	14	10	11	10	4	119
SA	4	10	2	0	6	6	0	8	4	9	4	2	55
WA	4	0	4	6	12	5	2	2	6	4	12	2	59
TAS	2	0	0	0	0	1	0	0	0	2	2	4	11
NT	0	0	0	0	0	0	0	2	0	0	0	4	6
ACT	0	0	2	2	0	4	0	2	2	0	2	0	14
AUSTRALIA	50	28	57	46	54	43	54	52	42	56	46	42	570

Liver

	Jan	Feb	Mar	Apr	May	Jun	Jul	Aug	Sep	Oct	Nov	Dec	Total
NSW	5	0	7	7	4	2	10	7	4	4	2	3	55
VIC	6	6	6	2	1	3	8	4	3	4	3	8	54
QLD	5	3	5	5	5	2	7	5	3	3	4	3	50
SA	2	4	1	0	1	4	1	3	1	3	1	1	22
WA	2	0	3	0	4	3	1	1	3	1	2	0	20
TAS	0	0	0	0	0	0	0	0	0	1	1	1	3
NT	0	0	0	0	0	0	0	0	0	0	0	2	2
ACT	0	0	1	1	0	1	0	1	2	0	1	0	7
AUSTRALIA	20	13	23	15	15	15	27	21	16	16	14	18	213

Heart

	Jan	Feb	Mar	Apr	May	Jun	Jul	Aug	Sep	Oct	Nov	Dec	Total
NSW	2	0	4	2	1	0	1	2	0	0	0	0	12
VIC	3	0	4	0	2	2	1	1	1	1	1	4	20
QLD	1	1	3	1	1	1	2	2	1	0	1	1	15
SA	1	1	0	0	1	2	0	0	0	0	1	0	6
WA	1	0	1	0	0	0	0	1	2	1	1	0	7
TAS	0	0	0	0	0	0	0	0	0	0	0	1	1
NT	0	0	0	0	0	0	0	0	0	0	0	1	1
ACT	0	0	0	0	0	0	0	1	0	0	1	0	2
AUSTRALIA	8	2	12	3	5	5	4	7	4	2	5	7	64



Heart/Lung

	Jan	Feb	Mar	Apr	May	Jun	Jul	Aug	Sep	Oct	Nov	Dec	Total
NSW	0	0	0	0	0	0	0	0	0	0	0	0	0
VIC	0	0	0	0	0	0	0	0	0	0	0	0	0
QLD	0	0	0	0	0	0	0	1	0	0	0	0	1
SA	0	1	0	0	0	0	0	0	0	0	0	0	1
WA	0	0	0	0	0	0	0	0	0	0	0	0	0
TAS	0	0	0	0	0	0	0	0	0	0	0	0	0
NT	0	0	0	0	0	0	0	0	0	0	0	0	0
ACT	0	0	0	0	0	0	0	0	0	0	0	0	0
AUSTRALIA	0	1	0	0	0	0	0	1	0	0	0	0	2

Lung

	Jan	Feb	Mar	Apr	May	Jun	Jul	Aug	Sep	Oct	Nov	Dec	Total
NSW	2	0	8	5	3	0	6	5	2	0	0	1	32
VIC	7	4	9	3	3	9	5	3	6	6	2	5	62
QLD	0	2	1	1	3	2	4	3	2	2	3	1	24
SA	2	3	0	0	2	2	0	1	1	3	1	0	15
WA	1	1	1	0	4	2	0	0	2	0	4	0	15
TAS	0	0	0	0	0	0	0	0	0	1	1	1	3
NT	0	0	0	0	0	0	0	1	0	0	0	2	3
ACT	0	0	0	0	0	1	0	1	0	0	1	0	3
AUSTRALIA	12	10	19	9	15	16	15	14	13	12	12	10	157

Pancreas

Pancreas figures relate to the transplantation of the whole organ and not those used for islets.

	Jan	Feb	Mar	Apr	May	Jun	Jul	Aug	Sep	Oct	Nov	Dec	Total
NSW	1	0	1	1	1	0	1	2	0	0	0	0	7
VIC	2	0	2	0	0	1	0	0	0	0	0	1	6
QLD	0	0	0	1	0	0	0	1	0	0	0	1	3
SA	1	1	0	0	1	1	0	0	0	0	0	0	4
WA	0	0	0	0	0	0	0	0	3	0	0	0	3
TAS	0	0	0	0	0	0	0	0	0	0	1	1	2
NT	0	0	0	0	0	0	0	0	0	0	0	0	0
ACT	0	0	0	0	0	0	0	0	0	0	1	0	1
AUSTRALIA	4	1	3	2	2	2	1	3	3	0	2	3	26



Pancreas Islets

	Jan	Feb	Mar	Apr	May	Jun	Jul	Aug	Sep	Oct	Nov	Dec	Total
NSW	0	0	0	1	1	0	0	1	1	0	0	0	4
VIC	0	0	0	0	1	0	0	0	1	0	1	0	3
QLD	0	0	0	0	0	0	0	0	0	0	0	0	0
SA	0	0	0	0	0	1	0	0	0	0	0	0	1
WA	0	0	0	0	0	0	0	0	0	0	0	0	0
TAS	1	0	0	0	0	0	0	0	0	0	0	0	1
NT	0	0	0	0	0	0	0	0	0	0	0	0	0
ACT	0	0	0	0	0	0	0	0	0	0	0	0	0
AUSTRALIA	1	0	0	1	2	1	0	1	2	0	1	0	9

Intestine

	Jan	Feb	Mar	Apr	May	Jun	Jul	Aug	Sep	Oct	Nov	Dec	Total
NSW	0	0	0	0	0	0	0	0	0	0	0	0	0
VIC	0	0	0	0	0	0	0	0	0	0	0	0	0
QLD	0	0	0	0	0	0	0	0	0	0	0	0	0
SA	0	0	0	0	0	0	0	0	0	0	0	0	0
WA	0	0	0	0	0	0	0	0	0	0	0	0	0
TAS	0	0	0	0	0	0	0	0	0	0	0	0	0
NT	0	0	0	0	0	0	0	0	0	0	0	0	0
ACT	0	0	0	0	0	0	0	0	0	0	0	0	0
AUSTRALIA	0	0	0	0	0	0	0	0	0	0	0	0	0

Organs Retrieved and Actually Transplanted Following Cardiac Death of Donor

The following monthly totals of organs represent the number of recipients from the donors after cardiac death tabulated on page 3. Numbers are included in the ALL DONORS count on the previous pages.
Multiple transplants will be counted under each of the organs.

Kidney

Number of recipients includes combined transplant (eg kidney/pancreas)

	Jan	Feb	Mar	Apr	May	Jun	Jul	Aug	Sep	Oct	Nov	Dec	Total
NSW	4	2	4	3	4	0	4	6	2	2	0	2	33
VIC	6	2	5	5	4	10	6	2	4	3	2	6	55
QLD	0	2	2	1	2	3	4	5	4	5	4	0	32
SA	0	0	2	0	0	0	0	2	2	4	1	2	13
WA	0	0	0	0	4	0	0	0	0	0	6	2	12
TAS	0	0	0	0	0	0	0	0	0	0	0	0	0
NT	0	0	0	0	0	0	0	2	0	0	0	0	2
ACT	0	0	0	0	0	4	0	0	0	0	0	0	4
AUSTRALIA	10	6	13	9	14	17	14	17	12	14	13	12	151

Liver

	Jan	Feb	Mar	Apr	May	Jun	Jul	Aug	Sep	Oct	Nov	Dec	Total
NSW	1	0	0	0	0	0	0	1	1	0	0	1	4
VIC	0	0	0	0	0	0	1	0	1	0	0	1	3
QLD	0	0	0	0	0	0	0	0	1	0	1	0	2
SA	0	0	0	0	0	0	0	0	0	0	0	1	1
WA	0	0	0	0	0	0	0	0	0	0	0	0	0
TAS	0	0	0	0	0	0	0	0	0	0	0	0	0
NT	0	0	0	0	0	0	0	0	0	0	0	0	0
ACT	0	0	0	0	0	1	0	0	0	0	0	0	1
AUSTRALIA	1	0	0	0	0	1	1	1	3	0	1	3	11

Lung

	Jan	Feb	Mar	Apr	May	Jun	Jul	Aug	Sep	Oct	Nov	Dec	Total
NSW	0	0	2	1	0	0	2	1	0	0	0	0	6
VIC	3	1	2	1	0	3	1	0	2	0	0	1	14
QLD	0	0	0	0	0	1	1	1	1	1	1	0	6
SA	0	0	0	0	0	0	0	0	1	1	0	0	2
WA	0	1	0	0	1	0	0	0	0	0	1	0	3
TAS	0	0	0	0	0	0	0	0	0	0	0	0	0
NT	0	0	0	0	0	0	0	1	0	0	0	0	1
ACT	0	0	0	0	0	1	0	0	0	0	0	0	1
AUSTRALIA	3	2	4	2	1	5	4	3	4	2	2	1	33



Pancreas

Pancreas figures relate to the transplantation of the whole organ and not those used for islets.

	Jan	Feb	Mar	Apr	May	Jun	Jul	Aug	Sep	Oct	Nov	Dec	Total
NSW	0	0	0	0	0	0	0	0	0	0	0	0	0
VIC	0	0	0	0	0	0	0	0	0	0	0	0	0
QLD	0	0	0	0	0	0	0	0	0	0	0	0	0
SA	0	0	0	0	0	0	0	0	0	0	0	0	0
WA	0	0	0	0	0	0	0	0	0	0	0	0	0
TAS	0	0	0	0	0	0	0	0	0	0	0	0	0
NT	0	0	0	0	0	0	0	0	0	0	0	0	0
ACT	0	0	0	0	0	0	0	0	0	0	0	0	0
AUSTRALIA	0	0	0	0	0	0	0	0	0	0	0	0	0