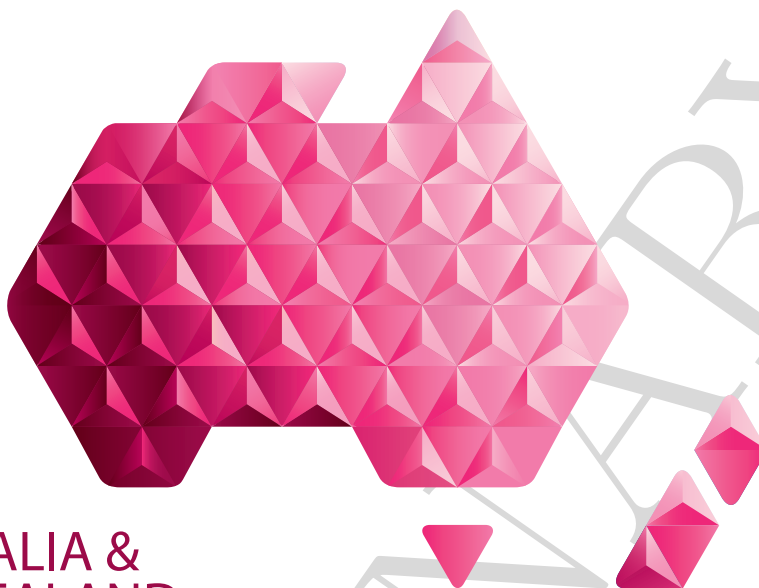


**ANZ
DATA**



**AUSTRALIA &
NEW ZEALAND**

LIVING KIDNEY DONATION
REGISTRY

Monthly Report on Living Kidney Donation in New Zealand

December 2018

Produced 18 January 2019 9:19 AM
Data Received by ANZDATA up to 17 January 2019

Contents

Explanatory Notes	2
Definitions	2
Notes	2
Summary of Living Kidney Donation	3
Total Living Kidney Donors by Transplant Hospital	4
Genetically-Related Donors by Transplant Hospital	4
Emotionally-Related Donors by Transplant Hospital	4
Unrelated Donors by Transplant Hospital	4
Transplant Recipients from Living Kidney Donors	5
Recipients by Transplant Hospital	5
Recipients by Referring Hospital	5

PRELIMINARY

Explanatory Notes

Definitions

Donor – A human being, living or deceased, who is a source of cells, tissues or organs for the purpose of transplantation.

Living Kidney Donor – A living human being from whom a kidney has been removed for the purpose of transplantation.

A Living Kidney Donor has one of the following three possible relationships with the recipient:

1. Related:

(a) Genetically Related:

- i. 1st Degree Genetic Relative: Parent, Sibling, Offspring
- ii. 2nd Degree genetic relative, e.g. grandparent, grandchild, aunt, uncle, niece, nephew
- iii. Other than 1st or 2nd degree genetically related, for example cousin

(b) Emotionally Related: Spouse (if not genetically related); in-laws; Adopted; Friend

2. Unrelated = Non Related: Not Genetically or Emotionally Related

Paired Kidney Exchange Programme (PKE) – This programme is an initiative to increase the options for living kidney donation. The programme was established in 2009, with the first donation occurring in 2011.

Paired Kidney Exchange Donor – A living kidney donor whom is identified as a match for patients who are eligible for a kidney transplant, and have a living donor who is willing but unable to donate because of an incompatible blood type or tissue type. This donor is willing to donate their kidney to another person.

Recipient – A consented eligible person into whom organs, retrieved for the purpose of transplantation, are received.

Transplantation – The transfer of organs or tissue from donor to recipient with the aim of restoring body function(s) of the recipient.

Notes

For the purpose of this report data representing Living Kidney Donors are defined in the definition outlined above.

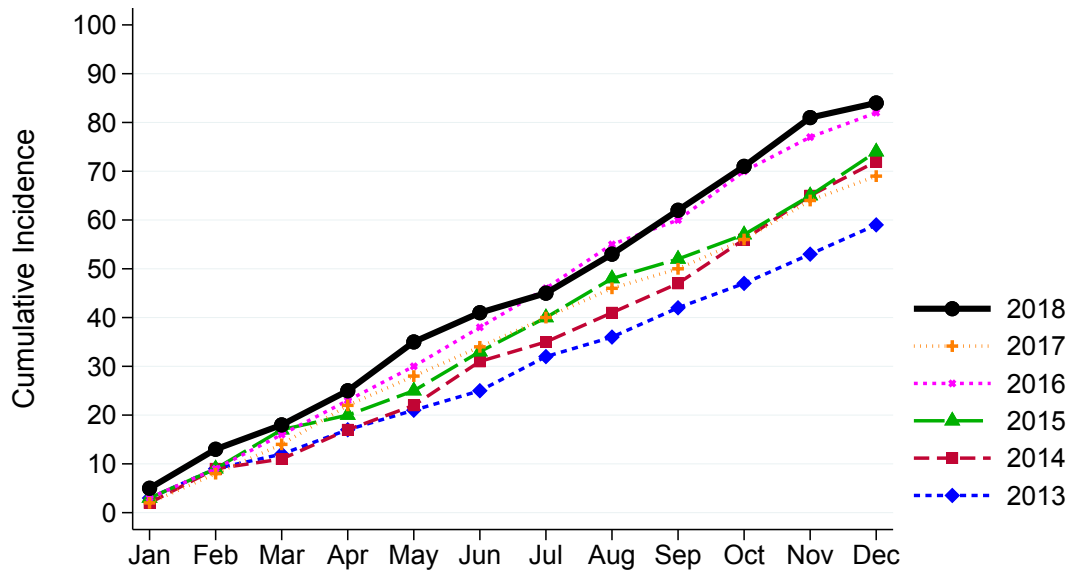
All tables are presented by hospital of donation, unless otherwise specified.

This report supercedes previous monthly report and as data reported is subject to revision it may change in subsequent reporting.

Summary of Living Kidney Donation

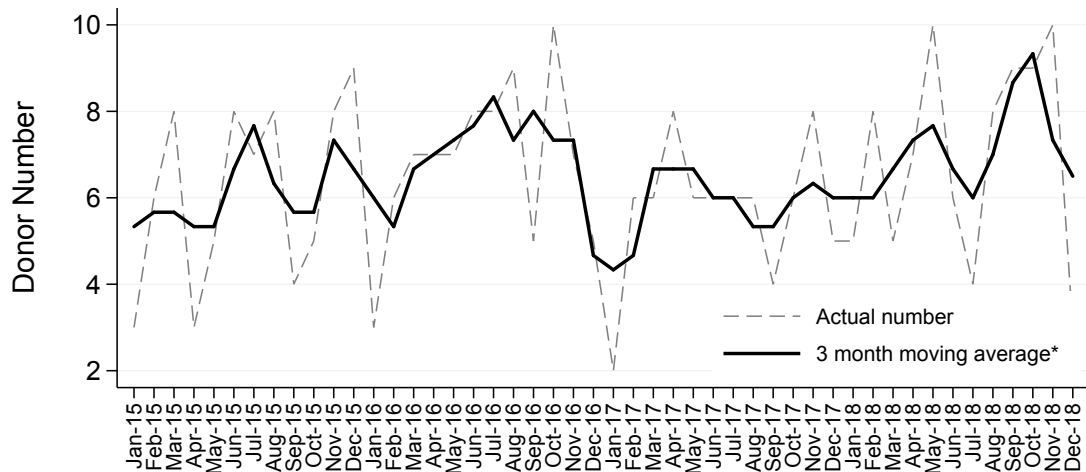
Living Kidney Donors per Month

New Zealand



Living Kidney Donors per Month

New Zealand



*The average is calculated from the number of living kidney donors in the current month, previous month and next month; except for the most recent month which is calculated from the previous and current months.

Total Living Kidney Donors by Transplant Hospital

	Jan	Feb	Mar	Apr	May	Jun	Jul	Aug	Sep	Oct	Nov	Dec	Total	DPMP
Auckland Hospital	4	4	4	4	6	3	2	5	5	5	6	3	51	.
Christchurch Hospital	0	2	1	1	3	2	1	1	2	2	2	0	17	.
Wellington Hospital	1	2	0	2	1	1	1	2	2	2	2	0	16	.
NEW ZEALAND	5	8	5	7	10	6	4	8	9	9	10	3	84	17.2

Genetically-Related Donors by Transplant Hospital

Genetically-related donors includes all degrees of genetically related donors such as siblings, parents, children etc.

	Jan	Feb	Mar	Apr	May	Jun	Jul	Aug	Sep	Oct	Nov	Dec	Total
Auckland Hospital	1	1	1	4	4	3	1	2	4	2	3	1	27
Christchurch Hospital	0	0	0	1	1	2	1	0	0	1	1	0	7
Wellington Hospital	0	0	0	1	0	0	1	2	1	1	1	0	7
NEW ZEALAND	1	1	1	6	5	5	3	4	5	4	5	1	41

Emotionally-Related Donors by Transplant Hospital

Emotionally-related donors includes donors who have an emotional or social attachment to the recipient, but are not genetically related. This includes spouses and friends.

	Jan	Feb	Mar	Apr	May	Jun	Jul	Aug	Sep	Oct	Nov	Dec	Total
Auckland Hospital	1	2	3	0	2	0	1	0	0	3	2	1	15
Christchurch Hospital	0	2	1	0	2	0	0	1	1	0	0	0	7
Wellington Hospital	1	1	0	1	1	1	0	0	0	1	0	0	6
NEW ZEALAND	2	5	4	1	5	1	1	1	1	4	2	1	28

Unrelated Donors by Transplant Hospital

Donors for the Paired-Kidney Exchange Scheme are included in this table.

	Jan	Feb	Mar	Apr	May	Jun	Jul	Aug	Sep	Oct	Nov	Dec	Total
Auckland Hospital	2	1	0	0	0	0	0	3	1	0	1	1	9
Christchurch Hospital	0	0	0	0	0	0	0	0	1	1	1	0	3
Wellington Hospital	0	1	0	0	0	0	0	0	1	0	1	0	3
NEW ZEALAND	2	2	0	0	0	0	0	3	3	1	3	1	15

Transplant Recipients from Living Kidney Donors

Recipients by Transplant Hospital

	Jan	Feb	Mar	Apr	May	Jun	Jul	Aug	Sep	Oct	Nov	Dec	Total
Auckland Hospital	4	4	4	4	6	3	2	5	5	5	6	3	51
Christchurch Hospital	0	2	1	1	3	2	1	1	2	2	2	0	17
Wellington Hospital	1	2	0	2	1	1	1	2	2	2	2	0	16
NEW ZEALAND	5	8	5	7	10	6	4	8	9	9	10	3	84

Recipients by Referring Hospital

	Jan	Feb	Mar	Apr	May	Jun	Jul	Aug	Sep	Oct	Nov	Dec	Total
Auckland Hospital	1	1	1	0	0	1	1	1	0	3	1	0	10
Christchurch Hospital	0	1	1	1	3	2	1	1	1	2	0	0	13
Dunedin Hospital	0	1	0	1	0	0	0	0	1	0	2	0	5
Hawkes Bay Hospital	0	0	0	1	0	0	0	1	1	0	0	0	3
Middlemore Hospital	1	0	1	2	1	0	0	0	1	0	0	1	7
Palmerston Hospital	1	1	1	0	1	0	1	1	0	0	0	0	6
Starship Children's Hospital	0	0	0	2	1	0	0	1	1	0	0	0	5
Taranaki Hospital	0	0	0	0	0	0	0	0	1	0	1	0	2
Wellington Hospital	0	1	1	0	1	1	0	0	1	2	2	0	9
Whangarei Hospital	1	0	0	0	1	0	1	1	1	1	1	0	7
Waikato Hospital Hamilton	1	2	0	0	1	1	0	1	0	1	3	1	11
Waitemata Renal Service	0	1	0	0	1	1	0	1	1	0	0	1	6
NEW ZEALAND	5	8	5	7	10	6	4	8	9	9	10	3	84