

CHAPTER 1

STOCK AND FLOW

Stephen McDonald
Leonie Excell



The number of new patients in Australia increased 13% in 2005 after a 2% decrease in 2004. In New Zealand there was a 5% decrease, to the lowest number since 2000. Rates of prevalent patients and new patients are shown in Figures 1.1 - 1.3. The relationship between the total new patients and fluctuations in the rate is illustrated in Figures 1.4 and 1.5.

The overall number of new transplants decreased by 4% in Australia in 2005 but live donors continues to increase each year. Subsequent transplants were the highest recorded since 1991.

Further data about stock and flow is shown in Figures 1.6 - 1.14.

In New Zealand, although the live donors remained steady, the overall number decreased 11% from the previous year.

For Aboriginal and Torres Strait Islanders and (to a lesser extent Maoris and Pacific People) there was a substantially higher rate of incidence. The combination of this higher rate of incidence together with a lower rate of transplantation leads to a much higher rate of prevalent dialysis patients among these groups.

Figure 1.1

Prevalent Patients 2001 - 2005					
(Number Per Million Population at 31st December)					
	2001	2002	2003	2004	2005
Australia Total	12,327 (634)	13,017 (663)	13,690 (689)	14,248 (708)	15,067 (741)
No. Functioning Transplants • #	5471 (282)	5743 (292)	5960 (306)	6254 (311)	6539 (322)
No. Dialysis Patients	6856 (353)	7274 (370)	7730 (389)	7994 (397)	8528 (420)
Proportion Home *	37%	35%	34%	32%	30%
Proportion Satellite HD	36%	37%	39%	42%	43%
Proportion CAPD/APD	26%	25%	24%	22%	21%
New Zealand Total	2527 (651)	2715 (689)	2881 (719)	2995 (737)	3093 (755)
No. Functioning Transplants • #	1062 (274)	1115 (283)	1167 (291)	1219 (300)	1239 (302)
No. Dialysis Patients	1465 (378)	1600 (406)	1714 (428)	1776 (437)	1854 (452)
Proportion Home *	62%	62%	59%	56%	54%
Proportion Satellite HD	12%	14%	15%	16%	16%
Proportion CAPD/APD	49%	48%	45%	42%	39%

• Country of Transplant # Patients lost to follow up are not included
 * Proportion of all patients dialysing currently receiving home-based treatment (either PD or HD)

Figure 1.2

Patient Flow Summary 2001 - 2005					
(Number Per Million Population at 31st December)					
* Country of Transplant					
	2001	2002	2003	2004	2005
Australia					
Total New Patients	1914 (99)	1900 (97)	1988 (100)	1950 (97)	2210 (109)
Total New Transplants *	541 (29)	604 (31)	543 (27)	649 (32)	623 (31)
Living Donor Transplants	213	230	218	243	246
Subsequent Transplants	53	67	71	67	84
Total Deaths	1240	1192	1264	1344	1345
Dialysis Patients	1082	1048	1120	1208	1199
Transplant Patients	158	144	144	136	146
New Zealand					
Total New Patients	466 (120)	467 (119)	462 (115)	458 (113)	436 (106)
Total New Transplants *	110 (28)	117 (30)	111 (28)	105 (26)	93 (23)
Living Donor Transplants	43	48	44	48	46
Subsequent Transplants	9	14	17	7	6
Total Deaths	287	263	291	333	327
Dialysis Patients	262	232	264	306	295
Transplant Patients	25	31	27	27	32

Figure 1.3

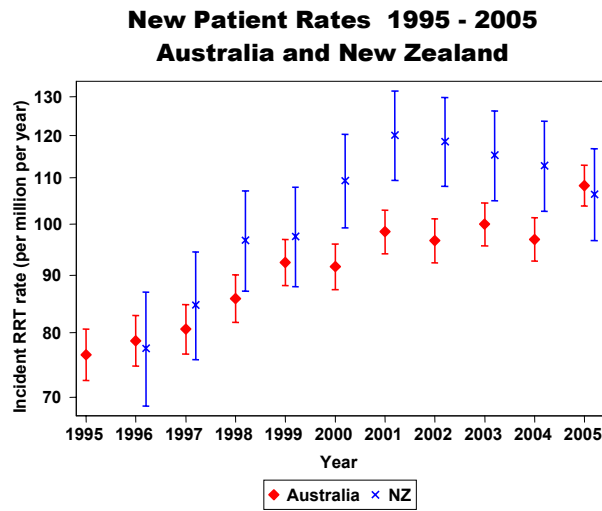


Figure 1.4

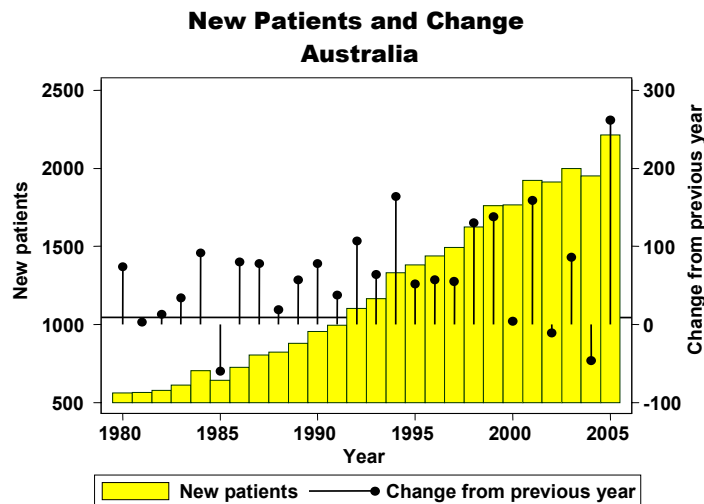


Figure 1.5

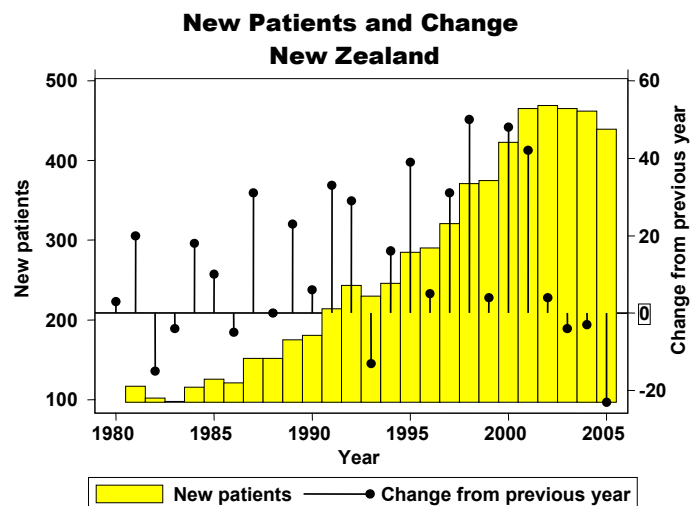




Figure 1.6

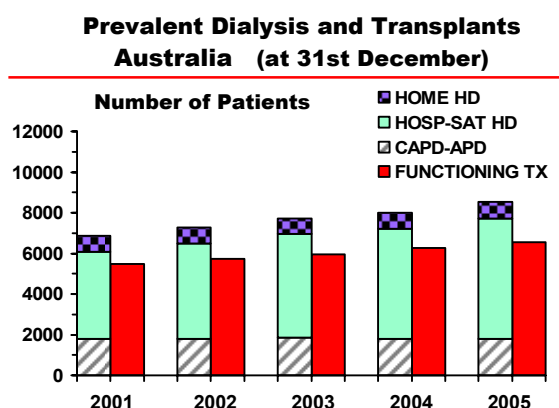


Figure 1.7

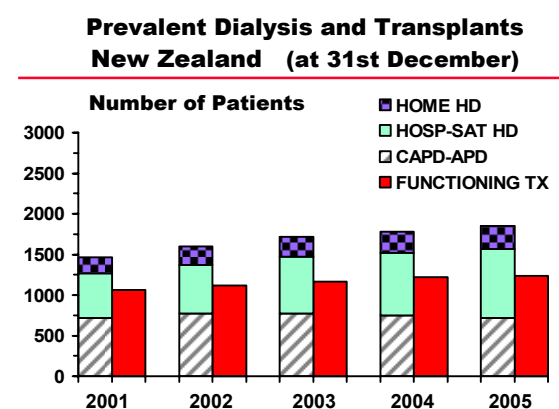


Figure 1.8

**Prevalence and Incidence by Indigenous Racial Origin, 2001 - 2005
(Number Per Million Population Per Year for Patients)
Aboriginal and Torres Strait Islanders Combined**

Race		2001	2002	2003	2004	2005
Australia						
	New Patients	175 (410)	172 (395)	172 (388)	191 (422)	207 (449)
Aboriginal and Torres Strait Islanders	Dialysis	644 (1508)	711 (1633)	768 (1731)	830 (1836)	908 (1971)
	Functioning Transplants	119 (279)	120 (276)	119 (268)	124 (274)	133 (290)
	Transplant Operations	21 (49)	17 (39)	14 (32)	26 (58)	22 (48)
	Deaths	107 (251)	104 (239)	114 (257)	121 (268)	117 (254)
	New Zealand					
	New Patients	149 (254)	149 (249)	147 (241)	141 (227)	128 (202)
Maori	Dialysis	459 (783)	534 (893)	587 (963)	598 (961)	630 (992)
	Functioning Transplants	104 (177)	105 (176)	112 (184)	116 (186)	110 (173)
	Transplant Operations	15 (26)	13 (22)	16 (26)	12 (19)	3 (5)
	Deaths	106 (181)	70 (117)	87 (143)	128 (206)	102 (161)
		New Patients	68 (260)	58 (208)	79 (286)	66 (233)
Pacific Islander	Dialysis	277 (1058)	273 (1015)	308 (1116)	330 (1166)	347 (1197)
	Functioning Transplants	45 (172)	56 (208)	63 (228)	70 (247)	72 (248)
	Transplant Operations	6 (23)	15 (56)	14 (51)	12 (42)	4 (14)
	Deaths	36 (137)	39 (145)	37 (134)	37 (131)	44 (152)

Figure 1.9

National and State Stock and Flow 1-Jan-2005 to 31-Dec-2005 () 31-Dec-2004 Figures # Patients Lost to Follow-up are not included * Resident State							
State	New Patients	Transplant Operations *	Deaths		Dialysis Dependent	Functioning Transplants # *	Total
			Dialysis	Transplant			
Queensland	455 (401)	106 (106)	224 (226)	27 (34)	1592 (1443)	1311 (1271)	2903 (2714)
New South Wales	675 (560)	191 (207)	380 (406)	47 (46)	2705 (2549)	1914 (1835)	4619 (4384)
Aust. Capital Territory	46 (44)	14 (28)	22 (21)	5 (4)	191 (184)	185 (182)	376 (366)
Victoria	509 (462)	153 (138)	286 (307)	25 (18)	2161 (2054)	1593 (1502)	3754 (3556)
Tasmania	37 (31)	12 (12)	25 (27)	4 (2)	156 (148)	146 (141)	302 (289)
South Australia	173 (157)	54 (80)	74 (84)	22 (19)	567 (511)	710 (694)	1277 (1205)
Northern Territory	79 (79)	8 (13)	40 (39)	3 (3)	308 (275)	71 (73)	379 (348)
Western Australia	236 (216)	85 (65)	148 (98)	13 (10)	848 (830)	628 (575)	1476 (1405)
Australia	2210 (1950)	623 (649)	1199 (1208)	146 (136)	8528 (7994)	6558 (6273)	15086 (14267)
New Zealand	436 (458)	93 (105)	295 (306)	32 (27)	1854 (1776)	1220 (1200)	3074 (2976)

Figure 1.10

Prevalent Transplant and Dialysis Patients 1983 to 2005 Country of Transplant # Patients Lost of Follow-up are not included (Number Per Million Population at 31 December)						
Australia				New Zealand		
Year	Transplant #	Dialysis	Total	Transplant #	Dialysis	Total
1983	1771 (115)	2019 (131)	3790 (246)	318 (99)	339 (105)	657 (203)
1984	1971 (127)	2152 (138)	4123 (265)	348 (107)	370 (113)	718 (220)
1985	2163 (137)	2230 (141)	4393 (278)	377 (115)	402 (122)	779 (237)
1986	2392 (149)	2339 (146)	4731 (295)	426 (129)	402 (122)	828 (250)
1987	2574 (158)	2526 (155)	5100 (314)	452 (135)	437 (131)	889 (266)
1988	2798 (169)	2675 (162)	5473 (331)	484 (145)	482 (144)	966 (289)
1989	3054 (182)	2750 (164)	5804 (345)	531 (158)	527 (156)	1058 (313)
1990	3265 (191)	2955 (173)	6220 (364)	579 (171)	557 (162)	1136 (331)
1991	3493 (202)	3138 (182)	6631 (384)	607 (174)	630 (180)	1237 (354)
1992	3698 (211)	3384 (193)	7082 (405)	677 (192)	674 (191)	1351 (383)
1993	3869 (219)	3704 (210)	7573 (429)	705 (197)	721 (202)	1426 (399)
1994	4059 (227)	4098 (230)	8157 (457)	731 (202)	784 (217)	1515 (418)
1995	4228 (234)	4520 (250)	8748 (484)	783 (213)	851 (232)	1634 (445)
1996	4437 (242)	4884 (267)	9321 (509)	824 (221)	935 (250)	1759 (471)
1997	4682 (253)	5190 (280)	9872 (533)	882 (233)	1018 (269)	1900 (502)
1998	4899 (262)	5537 (296)	10,436 (558)	936 (245)	1127 (295)	2063 (541)
1999	5066 (268)	6023 (318)	11,089 (586)	984 (257)	1231 (321)	2215 (577)
2000	5265 (275)	6412 (335)	11,677 (610)	1023 (265)	1335 (346)	2358 (611)
2001	5471 (282)	6856 (353)	12,327 (635)	1062 (274)	1465 (378)	2527 (651)
2002	5743 (292)	7274 (370)	13,017 (663)	1115 (283)	1600 (406)	2715 (689)
2003	5960 (300)	7730 (389)	13,690 (689)	1167 (291)	1714 (428)	2881 (719)
2004	6254 (311)	7994 (397)	14,248 (708)	1219 (300)	1776 (437)	2995 (737)
2005	6539 (322)	8528 (420)	15,067 (741)	1239 (302)	1854 (452)	3093 (755)



Figure 1.11

Comparison of Prevalent Transplant and Dialysis Dependent Patients 2001 - 2005
(Number Per Million Population at 31 December)

	2001	2002	2003	2004	2005
Transplants**					
Queensland	1128 (311)	1179 (318)	1231 (324)	1271 (327)	1311 (331)
New South Wales *	1602 (251)	1664 (258)	1752 (270)	1835 (281)	1914 (291)
Aust. Capital Territory *	134 (261)	146 (283)	162 (312)	182 (347)	185 (349)
Victoria	1329 (277)	1406 (289)	1439 (293)	1502 (302)	1593 (317)
Tasmania	112 (237)	122 (258)	130 (272)	141 (292)	146 (301)
South Australia	599 (396)	627 (413)	653 (428)	694 (452)	710 (460)
Northern Territory	66 (334)	68 (342)	67 (338)	73 (365)	71 (350)
Western Australia	515 (271)	546 (284)	544 (279)	575 (290)	628 (312)
Australia	5485 (283)	5758 (293)	5978 (301)	6273 (312)	6558 (323)
New Zealand	1048 (270)	1100 (279)	1149 (287)	1200 (295)	1220 (298)
** By Resident State and Country					
Dialysis					
Queensland	1094 (301)	1204 (324)	1340 (353)	1443 (372)	1592 (402)
New South Wales *	2339 (367)	2434 (378)	2547 (392)	2549 (390)	2705 (412)
Aust. Capital Territory *	159 (310)	178 (345)	187 (360)	184 (351)	191 (361)
Victoria	1851 (385)	1932 (398)	1992 (405)	2054 (413)	2161 (430)
Tasmania	123 (261)	143 (303)	154 (323)	148 (307)	156 (321)
South Australia	434 (287)	457 (301)	505 (331)	511 (333)	567 (368)
Northern Territory	210 (1062)	233 (1173)	247 (1245)	275 (1376)	308 (1519)
Western Australia	646 (340)	693 (360)	758 (388)	830 (419)	848 (422)
Australia	6856 (353)	7274 (370)	7730 (389)	7994 (397)	8528 (420)
New Zealand	1465 (378)	1600 (406)	1714 (428)	1776 (437)	1854 (452)
* NSW population excludes residents of the Southern Area Health Service * ACT population includes residents of the Southern Area Health Service (Medical services in the ACT service this Southern Area Region) Transplanted patients lost to follow up have been excluded					

Figure 1.12

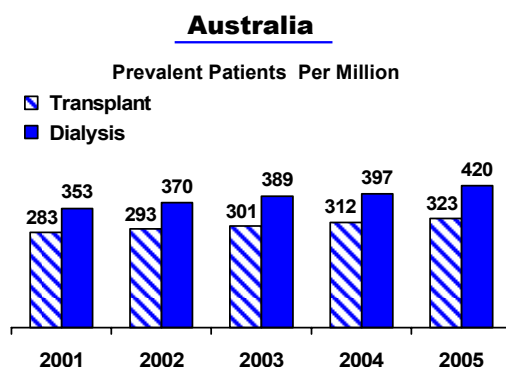


Figure 1.13

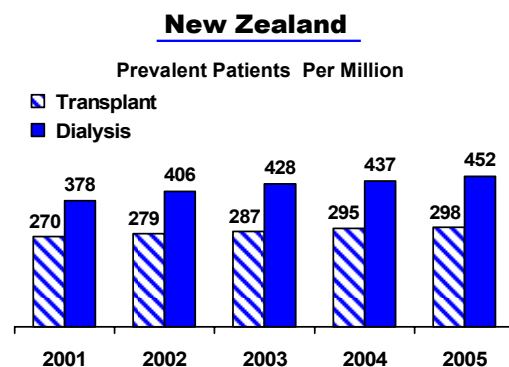


Figure 1.14

Comparison of Transplant and Dialysis Dependent Patients 2001 - 2005

