



# Monthly Report on Deceased Organ Donation in Australia

## December 2014

Produced 31 March 2015 12:37 PM  
Data Received by ANZOD up to 30 March 2015

Produced in conjunction with





## Contents

Definitions . . . . .	2
Notes . . . . .	2
<b>Summary of Deceased Organ Donation</b>	<b>3</b>
Total Actual Deceased Organ Donors . . . . .	5
Intended Deceased Organ Donors . . . . .	5
Deceased Organ Donors Following Circulatory Death . . . . .	5
<b>Transplant Recipients From Deceased Solid Organ Donors</b>	<b>6</b>
Total Transplant Recipients from Actual Deceased Solid Organ Donors . . . . .	8
Mean Transplant Recipients Per Actual Deceased Solid Organ Donor . . . . .	8
Transplant Recipients of Multiple Organs . . . . .	8
<b>Transplant Organs From Actual Deceased Solid Organ Donors</b>	<b>9</b>
Total Transplant Organs . . . . .	9
Total Transplant Organs . . . . .	11
Mean Transplant Organs Per Actual Deceased Solid Organ Donor . . . . .	11
<b>Organs Retrieved and Utilised From Deceased Donors</b>	<b>12</b>
<b>Organs Retrieved and Utilised Following Circulatory Death of Donor</b>	<b>15</b>



## Definitions

Actual Donor - (i) A consented eligible person from whom the retrieval operation is commenced for the purpose of transplantation (this includes donors who may be deemed medically unsuitable at time of surgery or after removal of organs), and/or (ii) A person from whom at least one organ was recovered for the purpose of transplantation.

Donation after Circulatory Death (DCD) - Donation, for the purpose of transplantation, occurs following death of a person resulting from the irreversible cessation of circulatory and respiratory function.

Intended Donor - A person for whom consent is obtained, tissue typing is initiated and a donor number is allocated, but solid organ donation did not proceed.

Recipient - A consented eligible person into whom organs, retrieved for the purpose of transplantation, are received.

Retrieval - The procedure of removing organs or tissue from a donor for the purpose of transplantation.

Transplantation - The transfer of organs or tissue from donor to recipient with the aim of restoring body function(s) of the recipient.

## Notes

For the purpose of this report data representing Actual Donors are defined in part(i) of the definition outlined above.

All tables are presented by state/territory of donation. This does not relate to state/territory of transplantation.

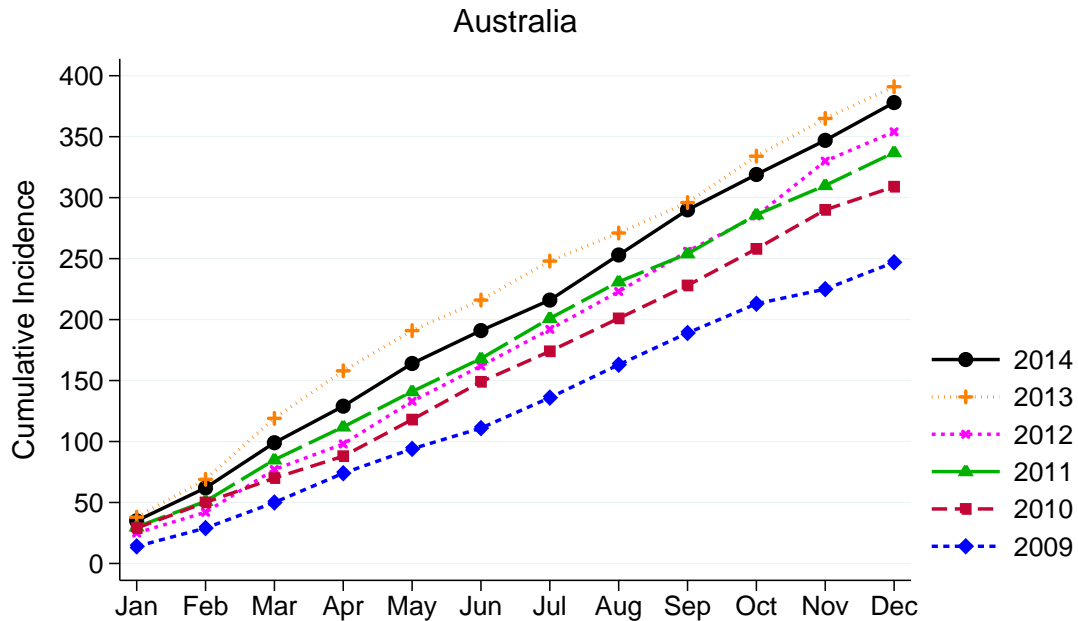
Victorian activity includes those donors from Albury, NSW due to the closer proximity of Albury to DonateLife services in Victoria than New South Wales.

Pancreas Islets, Stomach and Intestines are included counts of solid organ donation.

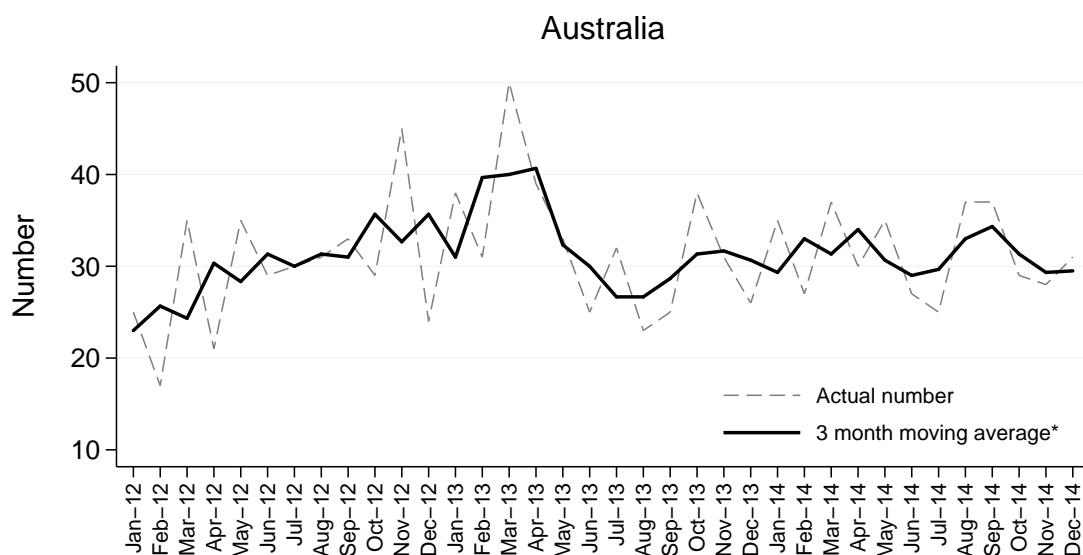
This report supersedes previous monthly report and as data reported is subject to revision it may change in subsequent reporting.

## Summary of Deceased Organ Donation

### Actual Deceased Organ Donors per Month



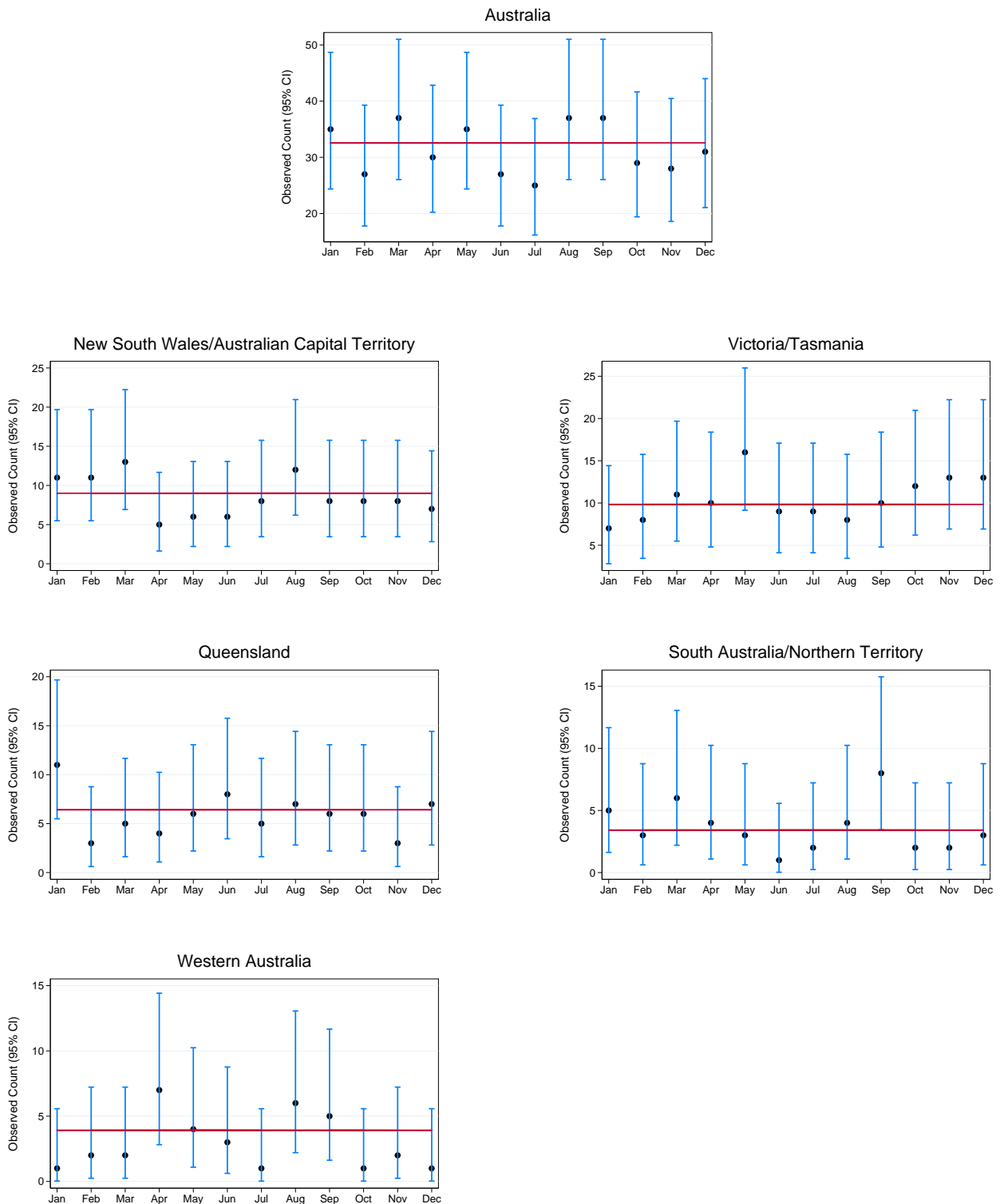
### Actual Deceased Organ Donors per Month



\*Calculated from the current month, previous month and next month, except the most recent month which is calculated from the previous and current months.

## Actual Deceased Organ Donors per Month 2014 by Jurisdiction (Rate and 95% Confidence Intervals)

95% confidence intervals are exact Poisson intervals.  
Note the different y-axis scales for each jurisdiction.  
Reference line is the 2013 monthly average.



## Total Actual Deceased Organ Donors

Number of donors (not adjusted for population).

	Jan	Feb	Mar	Apr	May	Jun	Jul	Aug	Sep	Oct	Nov	Dec	Total	DPMP*
NSW	10	11	12	5	5	6	6	11	7	5	7	7	<b>92</b>	12.6
VIC	7	8	9	9	14	9	8	8	8	12	12	13	<b>117</b>	20.0
QLD	11	3	5	4	6	8	5	7	6	6	3	7	<b>71</b>	15.0
SA	2	3	6	4	3	1	2	4	6	1	2	2	<b>36</b>	21.4
WA	1	2	2	7	4	3	1	6	5	1	2	1	<b>35</b>	13.6
TAS	0	0	2	1	2	0	1	0	2	0	1	0	<b>9</b>	17.5
NT	3	0	0	0	0	0	0	0	2	1	0	1	<b>7</b>	28.6
ACT	1	0	1	0	1	0	2	1	1	3	1	0	<b>11</b>	18.1
<b>AUSTRALIA</b>	<b>35</b>	<b>27</b>	<b>37</b>	<b>30</b>	<b>35</b>	<b>27</b>	<b>25</b>	<b>37</b>	<b>37</b>	<b>29</b>	<b>28</b>	<b>31</b>	<b>378</b>	<b>16.1</b>

\* Donors per million population

Based on the estimate resident population at June 2014 3101.0 Australian Demographic Statistics (Australian Bureau of Statistics) released December 2014

NSW population excludes residents of Southern Area Health Service (included in ACT population)

Note: In January 2014, an Albury donor was attended by and attributed to NSW DonateLife. Ordinarily, Albury is within Victorian jurisdiction so for consistency with historical reporting, ANZOD and the Clinical Governance Council of the AOTA have agreed to re-attribute this donor to Victoria.

## Intended Deceased Organ Donors

Consent obtained, but donation did not proceed.

	Jan	Feb	Mar	Apr	May	Jun	Jul	Aug	Sep	Oct	Nov	Dec	Total
NSW	2	0	1	1	4	1	5	1	2	2	2	1	<b>22</b>
VIC	1	3	1	4	2	1	5	2	4	5	5	6	<b>39</b>
QLD	2	0	1	1	2	0	1	2	1	0	1	3	<b>14</b>
SA	0	0	0	0	0	1	3	0	0	0	1	0	<b>5</b>
WA	0	0	1	2	0	0	1	0	1	0	1	0	<b>6</b>
TAS	0	0	0	1	0	0	0	0	0	0	1	0	<b>2</b>
NT	0	0	1	0	0	0	0	0	0	0	0	0	<b>1</b>
ACT	0	1	0	0	0	0	0	1	0	0	0	0	<b>2</b>
<b>AUSTRALIA</b>	<b>5</b>	<b>4</b>	<b>5</b>	<b>9</b>	<b>8</b>	<b>3</b>	<b>15</b>	<b>6</b>	<b>8</b>	<b>7</b>	<b>11</b>	<b>10</b>	<b>91</b>

## Deceased Organ Donors Following Circulatory Death

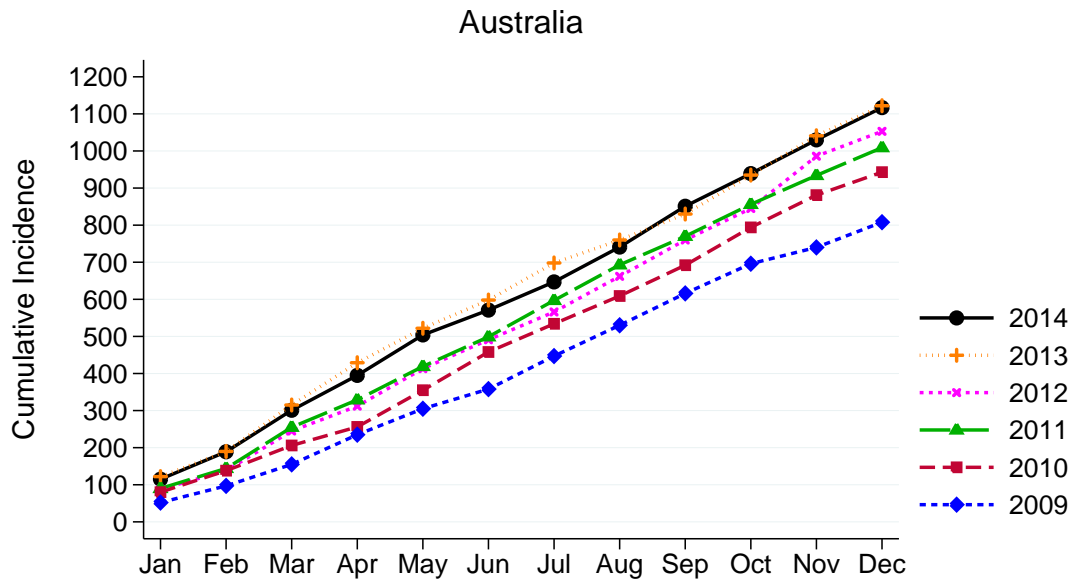
The following monthly totals represent the number of donors after circulatory death. Numbers are included in the TOTAL ACTUAL DONORS count above.

	Jan	Feb	Mar	Apr	May	Jun	Jul	Aug	Sep	Oct	Nov	Dec	Total
NSW	1	3	4	2	1	1	2	5	3	1	3	1	<b>27</b>
VIC	4	1	5	2	6	5	4	0	2	6	4	8	<b>47</b>
QLD	2	2	2	0	3	3	2	2	0	1	1	2	<b>20</b>
SA	0	1	0	0	0	0	1	0	1	0	0	1	<b>4</b>
WA	0	1	1	0	0	0	0	2	0	0	0	0	<b>4</b>
TAS	0	0	0	0	0	0	0	0	0	0	0	0	<b>0</b>
NT	1	0	0	0	0	0	0	0	1	0	0	0	<b>2</b>
ACT	1	0	0	0	0	0	1	0	0	1	0	0	<b>3</b>
<b>AUSTRALIA</b>	<b>9</b>	<b>8</b>	<b>12</b>	<b>4</b>	<b>10</b>	<b>9</b>	<b>10</b>	<b>9</b>	<b>7</b>	<b>9</b>	<b>8</b>	<b>12</b>	<b>107</b>

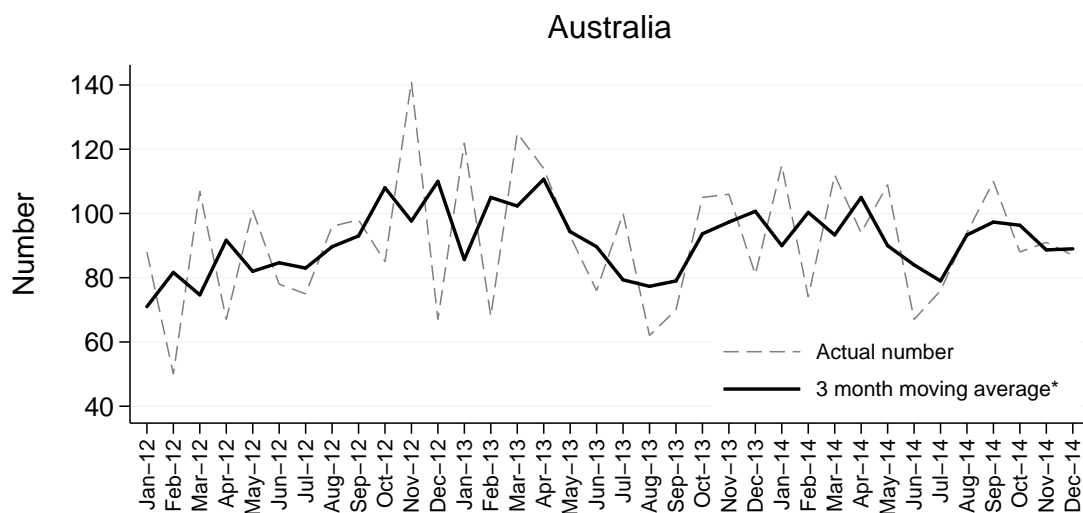
## Transplant Recipients From Deceased Solid Organ Donors

Recipients of multiple organs transplanted at the same time are counted once.

### Total Transplant Recipients per Month from Deceased Solid Organ Donors



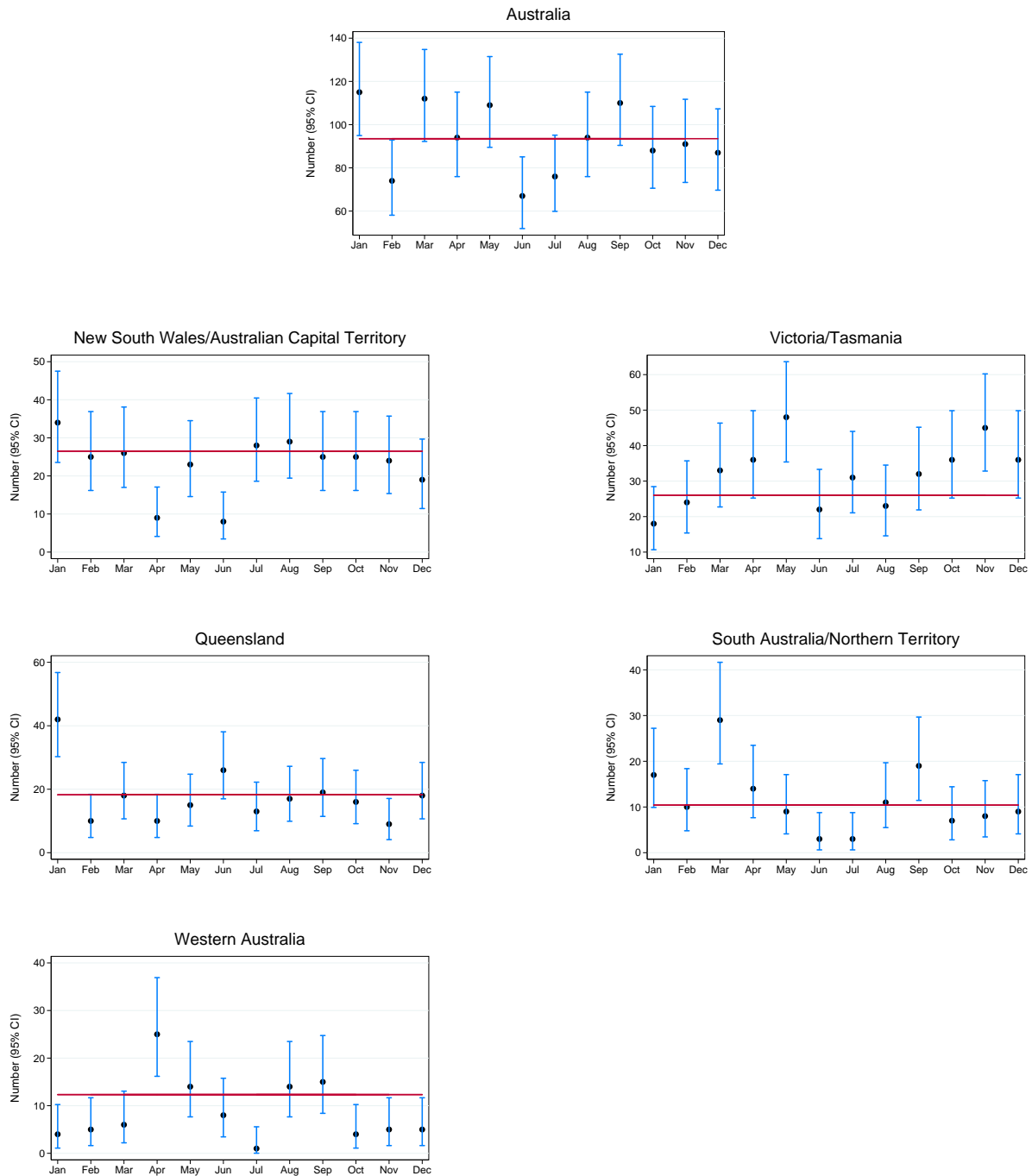
### Total Transplant Recipients per Month from Deceased Solid Organ Donors



\*Calculated from the current month, previous month and next month, except the most recent month which is calculated from the previous and current months.

## Total Transplant Recipients from Deceased Solid Organ Donors per Month 2014 by Jurisdiction (Rate and 95% Confidence Intervals)

Jurisdiction of donation is not related to state/territory of transplantation.  
95% confidence intervals are exact Poisson intervals.  
Note the different y-axis scales for each jurisdiction.  
Reference line is the 2013 monthly average.





## Total Transplant Recipients from Actual Deceased Solid Organ Donors

The following monthly totals represent the number of recipients transplanted with organs from the donors tabulated above.

	Jan	Feb	Mar	Apr	May	Jun	Jul	Aug	Sep	Oct	Nov	Dec	Total
NSW	32	25	25	9	19	8	21	28	21	14	19	19	<b>240</b>
VIC	18	24	24	32	44	22	27	23	26	36	40	36	<b>352</b>
QLD	42	10	18	10	15	26	13	17	19	16	9	18	<b>213</b>
SA	8	10	29	14	9	3	3	11	15	3	8	4	<b>117</b>
WA	4	5	6	25	14	8	1	14	15	4	5	5	<b>106</b>
TAS	0	0	9	4	4	0	4	0	6	0	5	0	<b>32</b>
NT	9	0	0	0	0	0	0	0	4	4	0	5	<b>22</b>
ACT	2	0	1	0	4	0	7	1	4	11	5	0	<b>35</b>
<b>AUSTRALIA</b>	<b>115</b>	<b>74</b>	<b>112</b>	<b>94</b>	<b>109</b>	<b>67</b>	<b>76</b>	<b>94</b>	<b>110</b>	<b>88</b>	<b>91</b>	<b>87</b>	<b>1117</b>

## Mean Transplant Recipients Per Actual Deceased Solid Organ Donor

	Jan	Feb	Mar	Apr	May	Jun	Jul	Aug	Sep	Oct	Nov	Dec	Total
NSW	3.2	2.3	2.1	1.8	3.8	1.3	3.5	2.5	3.0	2.8	2.7	2.7	<b>2.6</b>
VIC	2.6	3.0	2.7	3.6	3.1	2.4	3.4	2.9	3.3	3.0	3.3	2.8	<b>3.0</b>
QLD	3.8	3.3	3.6	2.5	2.5	3.3	2.6	2.4	3.2	2.7	3.0	2.6	<b>3.0</b>
SA	4.0	3.3	4.8	3.5	3.0	3.0	1.5	2.8	2.5	3.0	4.0	2.0	<b>3.3</b>
WA	4.0	2.5	3.0	3.6	3.5	2.7	1.0	2.3	3.0	4.0	2.5	5.0	<b>3.0</b>
TAS	0.0	0.0	4.5	4.0	2.0	0.0	4.0	0.0	3.0	0.0	5.0	0.0	<b>3.6</b>
NT	3.0	0.0	0.0	0.0	0.0	0.0	0.0	0.0	2.0	4.0	0.0	5.0	<b>3.1</b>
ACT	2.0	0.0	1.0	0.0	4.0	0.0	3.5	1.0	4.0	3.7	5.0	0.0	<b>3.2</b>
<b>AUSTRALIA</b>	<b>3.3</b>	<b>2.7</b>	<b>3.0</b>	<b>3.1</b>	<b>3.1</b>	<b>2.5</b>	<b>3.0</b>	<b>2.5</b>	<b>3.0</b>	<b>3.0</b>	<b>3.3</b>	<b>2.8</b>	<b>3.0</b>

## Transplant Recipients of Multiple Organs

Transplant recipients where two or more different types of organ have been utilised for transplantation in the same operative procedure (e.g. Kidney/Pancreas). This excludes double adult kidney, enbloc kidney and double lung transplants.

	Jan	Feb	Mar	Apr	May	Jun	Jul	Aug	Sep	Oct	Nov	Dec	Total
NSW	4	0	1	0	1	0	2	1	2	0	1	1	<b>13</b>
VIC	1	2	0	2	1	2	2	2	0	1	3	1	<b>17</b>
QLD	4	0	0	1	0	1	0	1	0	1	0	0	<b>8</b>
SA	1	0	2	1	0	0	0	0	1	0	0	0	<b>5</b>
WA	0	0	0	3	0	0	0	1	0	0	0	1	<b>5</b>
TAS	0	0	2	0	0	0	0	0	0	0	0	0	<b>2</b>
NT	0	0	0	0	0	0	0	0	0	0	0	0	<b>0</b>
ACT	0	0	0	0	1	0	2	0	1	1	1	0	<b>6</b>
<b>AUSTRALIA</b>	<b>10</b>	<b>2</b>	<b>5</b>	<b>7</b>	<b>3</b>	<b>3</b>	<b>6</b>	<b>5</b>	<b>4</b>	<b>3</b>	<b>5</b>	<b>3</b>	<b>56</b>

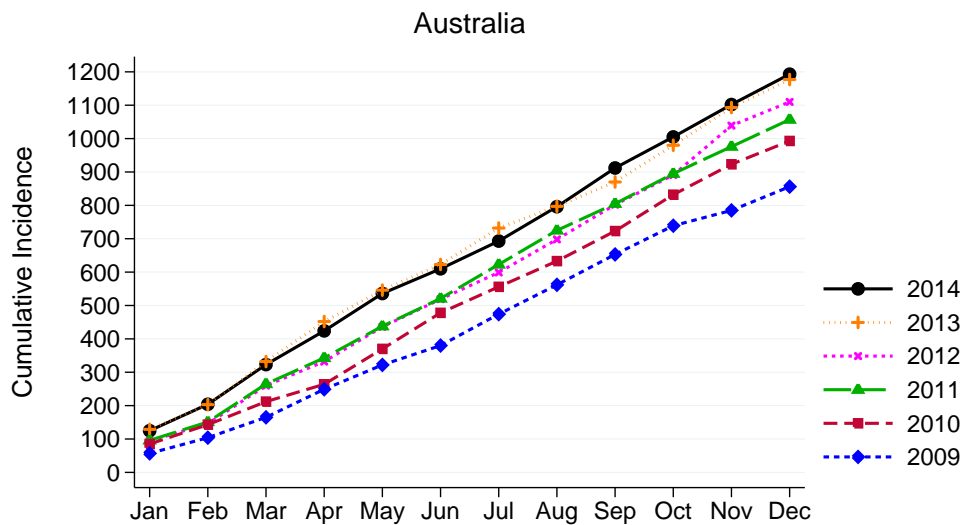
Note: An additional recipient of a combined kidney/pancreas transplant was identified for Victoria in December 2014, therefore numbers have been revised and differ from those published previously.

## Transplant Organs From Actual Deceased Solid Organ Donors

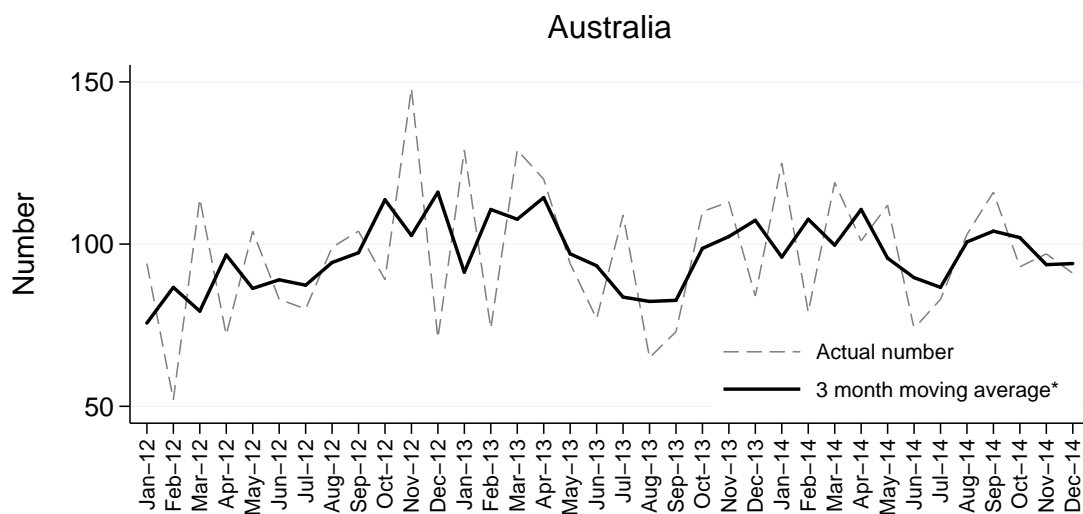
### Total Transplant Organs

Pancreas Islets, Stomach and Intestines are included.

### Total Transplant Organs per Month from Deceased Solid Organ Donors



### Total Transplant Organs per Month from Deceased Solid Organ Donors



\*Calculated from the current month, previous month and next month, except the most recent month which is calculated from the previous and current months.



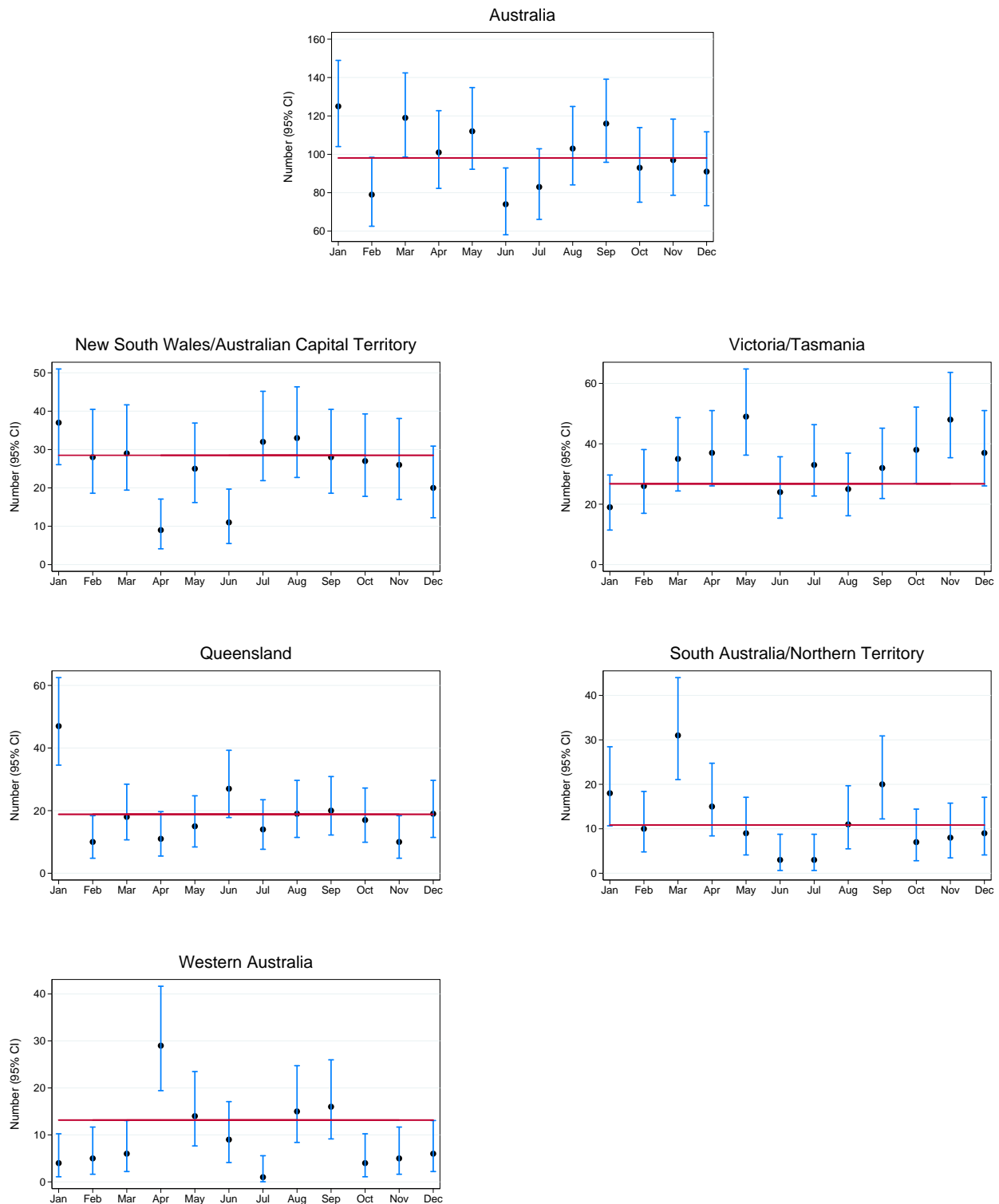
## Total Transplant Organs per Month 2014 by Jurisdiction (Rate and 95% Confidence Intervals)

Jurisdiction of donation is not related to state/territory of transplantation.

95% confidence intervals are exact Poisson intervals.

Note the different y-axis scales for each jurisdiction.

Reference line is the 2013 monthly average.





## Total Transplant Organs

	Jan	Feb	Mar	Apr	May	Jun	Jul	Aug	Sep	Oct	Nov	Dec	Total
NSW	35	28	27	9	20	11	23	32	23	15	20	20	<b>263</b>
VIC	19	26	24	33	45	24	29	25	26	38	43	37	<b>369</b>
QLD	47	10	18	11	15	27	14	19	20	17	10	19	<b>227</b>
SA	9	10	31	15	9	3	3	11	16	3	8	4	<b>122</b>
WA	4	5	6	29	14	9	1	15	16	4	5	6	<b>114</b>
TAS	0	0	11	4	4	0	4	0	6	0	5	0	<b>34</b>
NT	9	0	0	0	0	0	0	0	4	4	0	5	<b>22</b>
ACT	2	0	2	0	5	0	9	1	5	12	6	0	<b>42</b>
<b>AUSTRALIA</b>	<b>125</b>	<b>79</b>	<b>119</b>	<b>101</b>	<b>112</b>	<b>74</b>	<b>83</b>	<b>103</b>	<b>116</b>	<b>93</b>	<b>97</b>	<b>91</b>	<b>1193</b>

## Mean Transplant Organs Per Actual Deceased Solid Organ Donor

	Jan	Feb	Mar	Apr	May	Jun	Jul	Aug	Sep	Oct	Nov	Dec	Total
NSW	3.5	2.5	2.3	1.8	4.0	1.8	3.8	2.9	3.3	3.0	2.9	2.9	<b>2.9</b>
VIC	2.7	3.3	2.7	3.7	3.2	2.7	3.6	3.1	3.3	3.2	3.6	2.8	<b>3.2</b>
QLD	4.3	3.3	3.6	2.8	2.5	3.4	2.8	2.7	3.3	2.8	3.3	2.7	<b>3.2</b>
SA	4.5	3.3	5.2	3.8	3.0	3.0	1.5	2.8	2.7	3.0	4.0	2.0	<b>3.4</b>
WA	4.0	2.5	3.0	4.1	3.5	3.0	1.0	2.5	3.2	4.0	2.5	6.0	<b>3.3</b>
TAS	0.0	0.0	5.5	4.0	2.0	0.0	4.0	0.0	3.0	0.0	5.0	0.0	<b>3.8</b>
NT	3.0	0.0	0.0	0.0	0.0	0.0	0.0	0.0	2.0	4.0	0.0	5.0	<b>3.1</b>
ACT	2.0	0.0	2.0	0.0	5.0	0.0	4.5	1.0	5.0	4.0	6.0	0.0	<b>3.8</b>
<b>AUSTRALIA</b>	<b>3.6</b>	<b>2.9</b>	<b>3.2</b>	<b>3.4</b>	<b>3.2</b>	<b>2.7</b>	<b>3.3</b>	<b>2.8</b>	<b>3.1</b>	<b>3.2</b>	<b>3.5</b>	<b>2.9</b>	<b>3.2</b>

## Organs Retrieved and Utilised From Deceased Donors

The following monthly totals of organs represent the number of organs from all deceased donors retrieved and transplanted. Multiple transplants (other than Heart/Lung) will be counted under each of the organs.

### Kidney

Number of kidneys includes combined transplant (eg kidney/pancreas, kidney/liver and en bloc and double adult transplants)

	Jan	Feb	Mar	Apr	May	Jun	Jul	Aug	Sep	Oct	Nov	Dec	Total
NSW	18	20	16	7	10	8	11	15	14	10	14	11	<b>154</b>
VIC	12	15	12	16	24	14	14	14	14	19	24	24	<b>202</b>
QLD	22	6	10	8	12	15	8	10	10	10	6	13	<b>130</b>
SA	4	6	12	8	4	2	2	6	9	2	4	2	<b>61</b>
WA	2	4	4	14	7	6	0	10	9	2	3	2	<b>63</b>
TAS	0	0	4	2	3	0	2	0	4	0	2	0	<b>17</b>
NT	6	0	0	0	0	0	0	0	2	2	0	2	<b>12</b>
ACT	2	0	2	0	2	0	4	0	2	6	2	0	<b>20</b>
<b>AUSTRALIA</b>	<b>66</b>	<b>51</b>	<b>60</b>	<b>55</b>	<b>62</b>	<b>45</b>	<b>41</b>	<b>55</b>	<b>64</b>	<b>51</b>	<b>55</b>	<b>54</b>	<b>659</b>

### Liver

Split livers and cut down livers are included.

	Jan	Feb	Mar	Apr	May	Jun	Jul	Aug	Sep	Oct	Nov	Dec	Total
NSW	7	4	5	2	4	3	6	6	2	2	4	5	<b>50</b>
VIC	2	5	3	7	7	4	5	6	5	8	8	4	<b>64</b>
QLD	12	1	3	1	2	3	4	7	6	3	2	4	<b>48</b>
SA	3	3	7	4	2	1	1	2	3	1	1	1	<b>29</b>
WA	1	0	1	7	3	2	1	3	4	1	1	1	<b>25</b>
TAS	0	0	2	1	1	0	1	0	2	0	1	0	<b>8</b>
NT	1	0	0	0	0	0	0	0	1	1	0	1	<b>4</b>
ACT	0	0	0	0	1	0	2	1	2	2	1	0	<b>9</b>
<b>AUSTRALIA</b>	<b>26</b>	<b>13</b>	<b>21</b>	<b>22</b>	<b>20</b>	<b>13</b>	<b>20</b>	<b>25</b>	<b>25</b>	<b>18</b>	<b>18</b>	<b>16</b>	<b>237</b>

### Heart

Combined heart/lung transplants are excluded.

	Jan	Feb	Mar	Apr	May	Jun	Jul	Aug	Sep	Oct	Nov	Dec	Total
NSW	1	1	2	0	1	0	2	1	2	0	0	1	<b>11</b>
VIC	1	2	2	4	4	2	2	3	1	3	4	3	<b>31</b>
QLD	3	1	3	0	0	3	1	0	1	1	1	0	<b>14</b>
SA	0	0	5	1	0	0	0	1	1	0	1	0	<b>9</b>
WA	0	0	1	3	2	0	0	0	1	0	0	1	<b>8</b>
TAS	0	0	1	0	0	0	0	0	0	0	0	0	<b>1</b>
NT	0	0	0	0	0	0	0	0	0	0	0	1	<b>1</b>
ACT	0	0	0	0	1	0	1	0	0	1	1	0	<b>4</b>
<b>AUSTRALIA</b>	<b>5</b>	<b>4</b>	<b>14</b>	<b>8</b>	<b>8</b>	<b>5</b>	<b>6</b>	<b>5</b>	<b>6</b>	<b>5</b>	<b>7</b>	<b>6</b>	<b>79</b>



## Heart/Lung

Includes only combined Heart/Lung transplants.

	Jan	Feb	Mar	Apr	May	Jun	Jul	Aug	Sep	Oct	Nov	Dec	Total
NSW	1	0	0	0	0	0	0	0	0	0	0	0	<b>1</b>
VIC	0	0	0	1	0	0	0	0	0	0	0	0	<b>1</b>
QLD	1	0	0	0	0	0	0	1	0	0	0	0	<b>2</b>
SA	0	0	0	0	0	0	0	0	0	0	0	0	<b>0</b>
WA	0	0	0	0	0	0	0	0	0	0	0	0	<b>0</b>
TAS	0	0	0	0	0	0	0	0	0	0	0	0	<b>0</b>
NT	0	0	0	0	0	0	0	0	0	0	0	0	<b>0</b>
ACT	0	0	0	0	0	0	0	0	0	0	0	0	<b>0</b>
<b>AUSTRALIA</b>	<b>2</b>	<b>0</b>	<b>0</b>	<b>1</b>	<b>0</b>	<b>0</b>	<b>0</b>	<b>1</b>	<b>0</b>	<b>0</b>	<b>0</b>	<b>0</b>	<b>4</b>

## Lung

Included are left or right lung transplants and double lung transplants. Combined heart/lung transplants are excluded.

	Jan	Feb	Mar	Apr	May	Jun	Jul	Aug	Sep	Oct	Nov	Dec	Total
NSW	4	3	3	0	4	0	2	8	3	3	2	2	<b>34</b>
VIC	3	3	5	3	9	3	6	0	5	7	4	5	<b>53</b>
QLD	6	2	2	1	1	5	1	0	3	3	1	2	<b>27</b>
SA	1	1	5	1	3	0	0	2	2	0	2	1	<b>18</b>
WA	1	1	0	3	1	1	0	1	2	1	1	1	<b>13</b>
TAS	0	0	2	1	0	0	1	0	0	0	1	0	<b>5</b>
NT	2	0	0	0	0	0	0	0	1	1	0	1	<b>5</b>
ACT	0	0	0	0	0	0	1	0	0	2	1	0	<b>4</b>
<b>AUSTRALIA</b>	<b>17</b>	<b>10</b>	<b>17</b>	<b>9</b>	<b>18</b>	<b>9</b>	<b>11</b>	<b>11</b>	<b>16</b>	<b>17</b>	<b>12</b>	<b>12</b>	<b>159</b>

## Pancreas

Pancreas figures relate to the transplantation of the whole organ and not those used for islets.

	Jan	Feb	Mar	Apr	May	Jun	Jul	Aug	Sep	Oct	Nov	Dec	Total
NSW	3	0	1	0	1	0	2	1	2	0	0	1	<b>11</b>
VIC	1	0	0	1	1	1	2	2	0	1	3	1	<b>13</b>
QLD	2	0	0	1	0	1	0	0	0	0	0	0	<b>4</b>
SA	1	0	2	1	0	0	0	0	1	0	0	0	<b>5</b>
WA	0	0	0	2	0	0	0	1	0	0	0	1	<b>4</b>
TAS	0	0	2	0	0	0	0	0	0	0	1	0	<b>3</b>
NT	0	0	0	0	0	0	0	0	0	0	0	0	<b>0</b>
ACT	0	0	0	0	1	0	1	0	1	1	1	0	<b>5</b>
<b>AUSTRALIA</b>	<b>7</b>	<b>0</b>	<b>5</b>	<b>5</b>	<b>3</b>	<b>2</b>	<b>5</b>	<b>4</b>	<b>4</b>	<b>2</b>	<b>5</b>	<b>3</b>	<b>45</b>



## Pancreas Islets

	Jan	Feb	Mar	Apr	May	Jun	Jul	Aug	Sep	Oct	Nov	Dec	Total
NSW	1	0	0	0	0	0	0	1	0	0	0	0	<b>2</b>
VIC	0	1	2	1	0	0	0	0	1	0	0	0	<b>5</b>
QLD	0	0	0	0	0	0	0	1	0	0	0	0	<b>1</b>
SA	0	0	0	0	0	0	0	0	0	0	0	0	<b>0</b>
WA	0	0	0	0	1	0	0	0	0	0	0	0	<b>1</b>
TAS	0	0	0	0	0	0	0	0	0	0	0	0	<b>0</b>
NT	0	0	0	0	0	0	0	0	0	0	0	0	<b>0</b>
ACT	0	0	0	0	0	0	0	0	0	0	0	0	<b>0</b>
<b>AUSTRALIA</b>	<b>1</b>	<b>1</b>	<b>2</b>	<b>1</b>	<b>1</b>	<b>0</b>	<b>0</b>	<b>2</b>	<b>1</b>	<b>0</b>	<b>0</b>	<b>0</b>	<b>9</b>

## Intestine

Stomach and/or intestines are included.

	Jan	Feb	Mar	Apr	May	Jun	Jul	Aug	Sep	Oct	Nov	Dec	Total
NSW	0	0	0	0	0	0	0	0	0	0	0	0	<b>0</b>
VIC	0	0	0	0	0	0	0	0	0	0	0	0	<b>0</b>
QLD	1	0	0	0	0	0	0	0	0	0	0	0	<b>1</b>
SA	0	0	0	0	0	0	0	0	0	0	0	0	<b>0</b>
WA	0	0	0	0	0	0	0	0	0	0	0	0	<b>0</b>
TAS	0	0	0	0	0	0	0	0	0	0	0	0	<b>0</b>
NT	0	0	0	0	0	0	0	0	0	0	0	0	<b>0</b>
ACT	0	0	0	0	0	0	0	0	0	0	0	0	<b>0</b>
<b>AUSTRALIA</b>	<b>1</b>	<b>0</b>	<b>0</b>	<b>0</b>	<b>0</b>	<b>0</b>	<b>0</b>	<b>0</b>	<b>0</b>	<b>0</b>	<b>0</b>	<b>0</b>	<b>1</b>

## Organs Retrieved and Utilised Following Circulatory Death of Donor

The following monthly totals of organs represent the number of recipients from the donors after circulatory death tabulated on page 3. Numbers are included in the ALL DONORS count on the previous pages.  
Multiple transplants that occur at the same time will be counted under each organ.

### Kidney

Number of kidneys includes combined transplant (eg kidney/pancreas and en bloc and double adult transplants)

	Jan	Feb	Mar	Apr	May	Jun	Jul	Aug	Sep	Oct	Nov	Dec	Total
NSW	0	5	4	2	2	2	4	7	6	2	6	2	<b>42</b>
VIC	8	2	6	2	8	6	6	0	4	9	8	14	<b>73</b>
QLD	4	4	4	0	6	5	4	4	0	2	2	4	<b>39</b>
SA	0	2	0	0	0	0	0	0	0	0	0	2	<b>4</b>
WA	0	2	2	0	0	0	0	4	0	0	0	0	<b>8</b>
TAS	0	0	0	0	0	0	0	0	0	0	0	0	<b>0</b>
NT	2	0	0	0	0	0	0	0	0	0	0	0	<b>2</b>
ACT	2	0	0	0	0	0	2	0	0	2	0	0	<b>6</b>
<b>AUSTRALIA</b>	<b>16</b>	<b>15</b>	<b>16</b>	<b>4</b>	<b>16</b>	<b>13</b>	<b>16</b>	<b>15</b>	<b>10</b>	<b>15</b>	<b>16</b>	<b>22</b>	<b>174</b>

### Liver

Split livers and cut down livers are included.

	Jan	Feb	Mar	Apr	May	Jun	Jul	Aug	Sep	Oct	Nov	Dec	Total
NSW	0	0	0	0	0	0	1	0	0	0	1	0	<b>2</b>
VIC	1	0	0	1	1	0	1	0	0	3	1	0	<b>8</b>
QLD	1	0	0	0	0	0	1	2	0	1	0	0	<b>5</b>
SA	0	1	0	0	0	0	0	0	0	0	0	0	<b>1</b>
WA	0	0	0	0	0	0	0	0	0	0	0	0	<b>0</b>
TAS	0	0	0	0	0	0	0	0	0	0	0	0	<b>0</b>
NT	0	0	0	0	0	0	0	0	0	0	0	0	<b>0</b>
ACT	0	0	0	0	0	0	0	0	0	1	0	0	<b>1</b>
<b>AUSTRALIA</b>	<b>2</b>	<b>1</b>	<b>0</b>	<b>1</b>	<b>1</b>	<b>0</b>	<b>3</b>	<b>2</b>	<b>0</b>	<b>5</b>	<b>2</b>	<b>0</b>	<b>17</b>

### Lung

Included are left or right lung transplants as well as double lung transplants.

	Jan	Feb	Mar	Apr	May	Jun	Jul	Aug	Sep	Oct	Nov	Dec	Total
NSW	0	1	1	0	1	0	1	4	1	1	1	0	<b>11</b>
VIC	1	0	3	0	4	1	2	0	2	4	0	2	<b>19</b>
QLD	1	1	1	0	1	1	0	0	0	1	1	0	<b>7</b>
SA	0	0	0	0	0	0	0	0	0	0	0	0	<b>0</b>
WA	0	0	0	0	0	0	0	0	0	0	0	0	<b>0</b>
TAS	0	0	0	0	0	0	0	0	0	0	0	0	<b>0</b>
NT	0	0	0	0	0	0	0	0	0	0	0	0	<b>0</b>
ACT	0	0	0	0	0	0	0	0	0	1	0	0	<b>1</b>
<b>AUSTRALIA</b>	<b>2</b>	<b>2</b>	<b>5</b>	<b>0</b>	<b>6</b>	<b>2</b>	<b>3</b>	<b>4</b>	<b>3</b>	<b>7</b>	<b>2</b>	<b>2</b>	<b>38</b>





## Pancreas

Pancreas figures relate to the transplantation of the whole organ and not those used for islets.

	Jan	Feb	Mar	Apr	May	Jun	Jul	Aug	Sep	Oct	Nov	Dec	Total
NSW	0	0	0	0	0	0	0	0	0	0	0	0	0
VIC	1	0	0	0	0	0	0	0	0	0	0	0	1
QLD	0	0	0	0	0	0	0	0	0	0	0	0	0
SA	0	0	0	0	0	0	0	0	0	0	0	0	0
WA	0	0	0	0	0	0	0	0	0	0	0	0	0
TAS	0	0	0	0	0	0	0	0	0	0	0	0	0
NT	0	0	0	0	0	0	0	0	0	0	0	0	0
ACT	0	0	0	0	0	0	0	0	0	1	0	0	1
<b>AUSTRALIA</b>	<b>1</b>	<b>0</b>	<b>0</b>	<b>0</b>	<b>0</b>	<b>0</b>	<b>0</b>	<b>0</b>	<b>0</b>	<b>1</b>	<b>0</b>	<b>0</b>	<b>2</b>