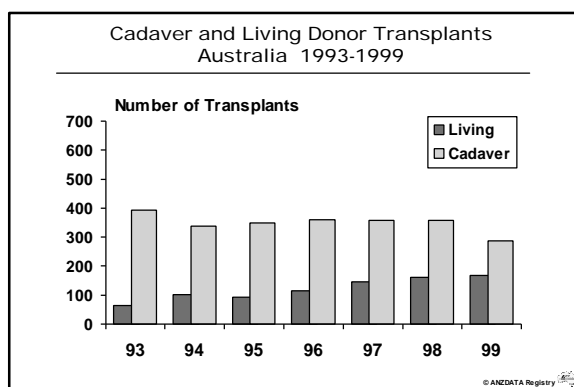
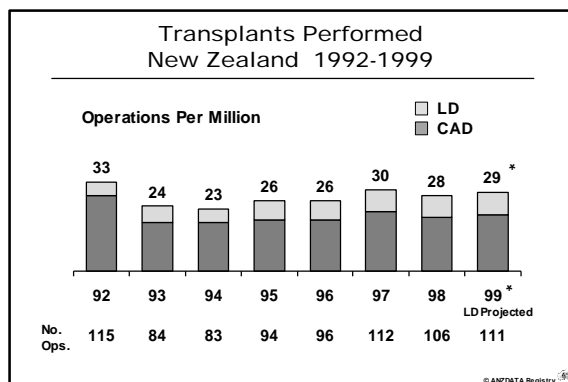
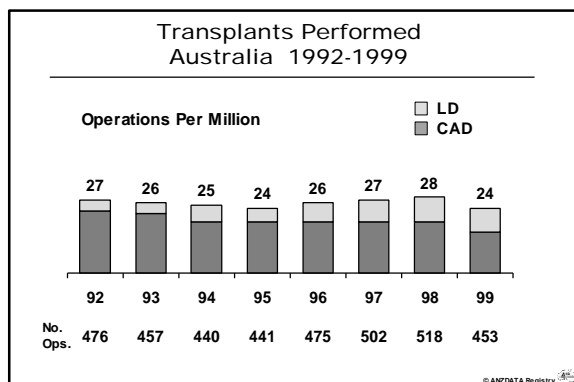


ANZDATA Registry - Melbourne 2000

Transplantation - Dr Graeme Russ

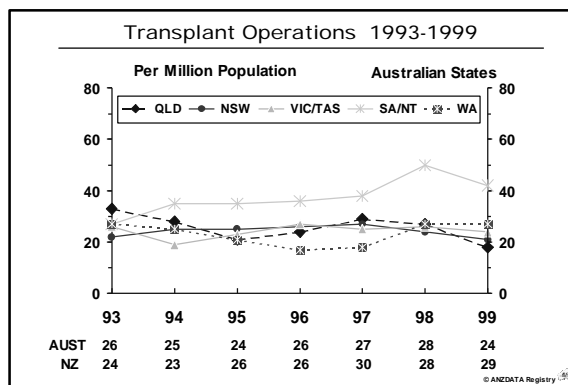


Rate of Transplant Operations (Per Million)
By Year (1-Jan to 31 Dec)

		1995	1996	1997	1998	1999
Aust	CAD	19	19	19	19	15
	LD	5	7	8	9	9
NZ	CAD	19	19	22	20	21
	LD	7	7	8	8	8

Transplants in Each State 1995-1999
Number of Operations (Per Million Population)

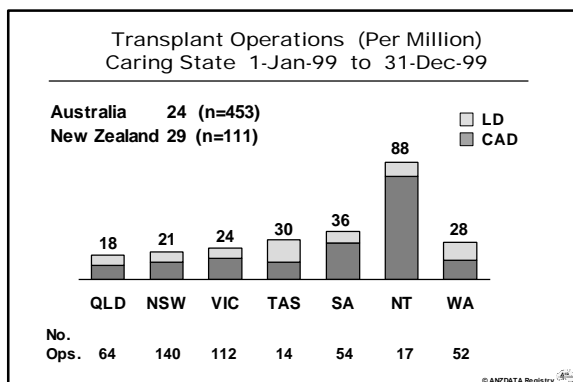
	1995	1996	1997	1998	1999
QLD	69 (21)	80 (24)	98 (29)	93 (27)	64 (18)
NSW/ACT	161 (25)	171 (26)	179 (27)	160 (24)	143 (21)
VIC/TAS	116 (23)	134 (27)	128 (25)	131 (26)	125 (24)
SA/NT	58 (35)	60 (36)	64 (38)	84 (50)	70 (42)
WA	37 (21)	30 (17)	33 (18)	50 (27)	51 (27)
AUST	441 (24)	475 (26)	502 (27)	518 (28)	453 (24)



ANZDATA Registry Web Address
<http://www.anzdata.org.au>

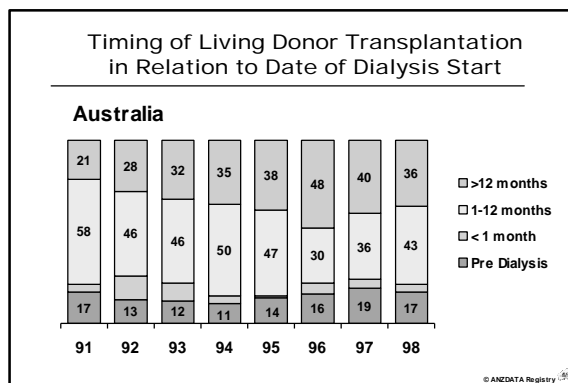
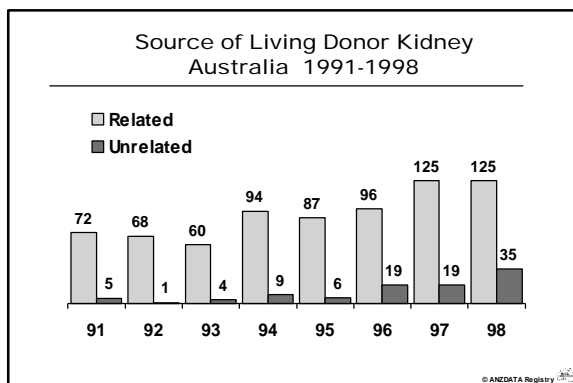
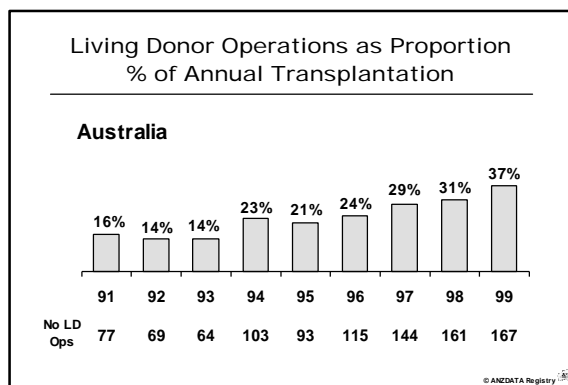
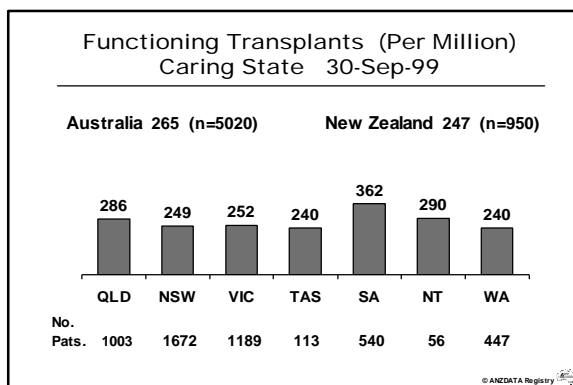
ANZDATA Registry - Melbourne 2000

Transplantation - Dr Graeme Russ



Rate of Transplant Operations (Per Million)
Caring State by Year (1-Jan to 31 Dec)

		1995	1996	1997	1998	1999
QLD	CAD	20	20	24	20	10
	LD	2	4	4	8	8
NSW	CAD	20	20	19	18	13
	LD	4	6	8	5	8
VIC	CAD	17	19	17	13	16
	LD	7	7	9	12	8
TAS	CAD	8	13	8	19	13
	LD	11	21	13	11	17
SA	CAD	31	30	23	38	27
	LD	8	9	11	11	9
NT	CAD	12	11	64	53	78
	LD	5	11	27	5	10
WA	CAD	14	14	13	15	15
	LD	8	3	5	12	13

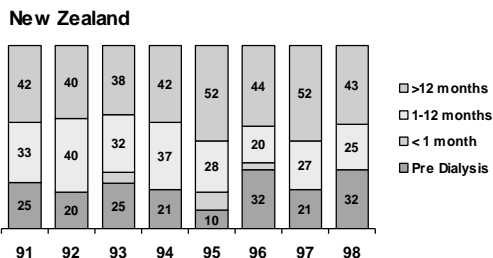


ANZDATA Registry Web Address
<http://www.anzdata.org.au>

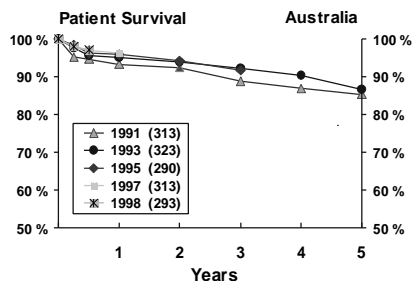
ANZDATA Registry - Melbourne 2000

Transplantation - Dr Graeme Russ

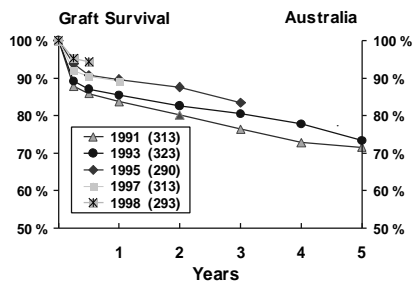
Timing of Living Donor Transplantation in Relation to Date of Dialysis Start



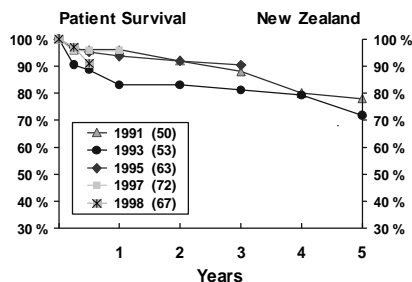
Primary Cadaver Patient Survival 1991-1998 Related to Year of Transplant



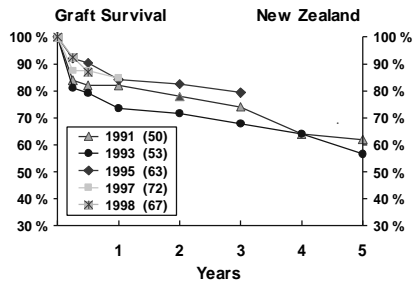
Primary Cadaver Graft Survival 1991-1998 Related to Year of Transplant



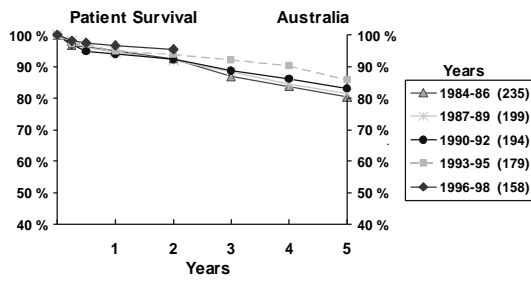
Primary Cadaver Patient Survival 1991-1998 Related to Year of Transplant



Primary Cadaver Graft Survival 1991-1998 Related to Year of Transplant

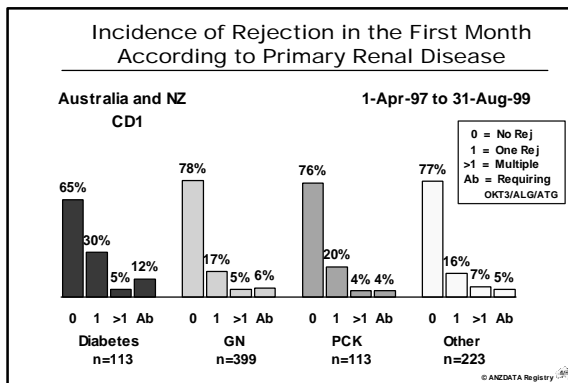
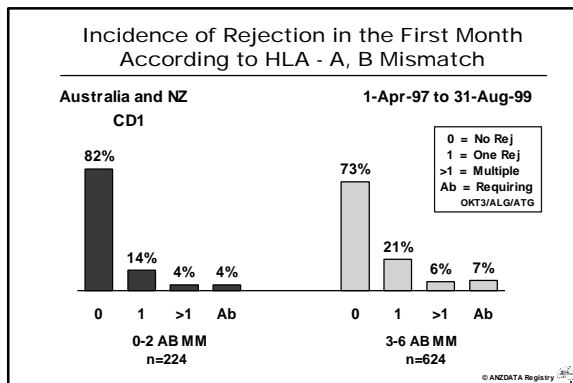
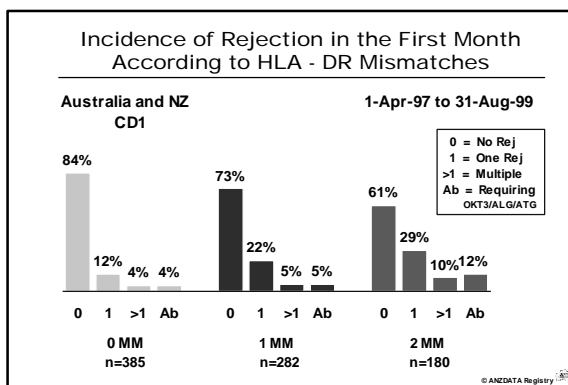
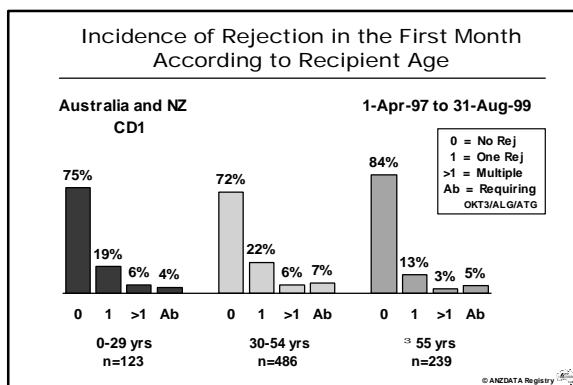
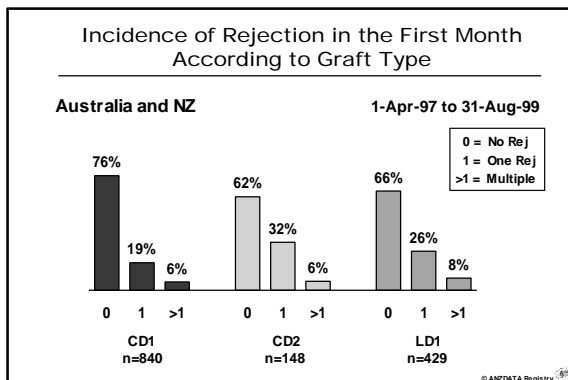
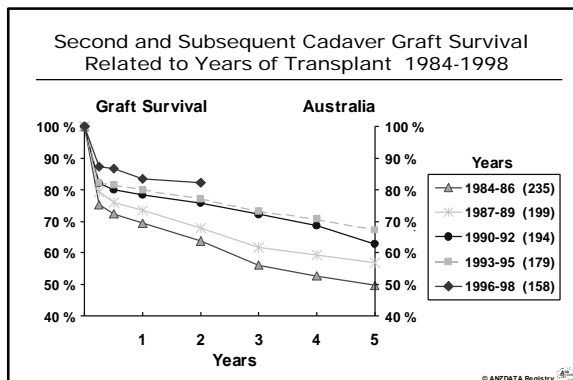


Second and Subsequent Cadaver Patient Survival Related to Years of Transplant 1984-1998



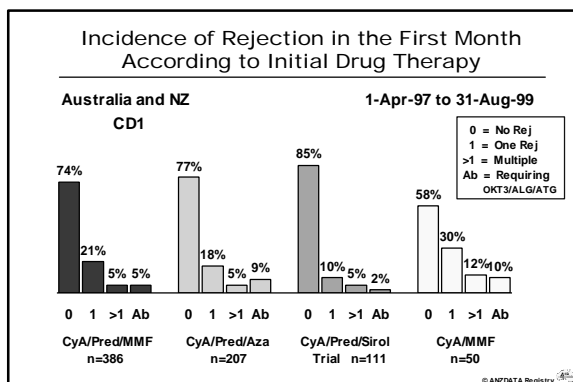
ANZDATA Registry Web Address
<http://www.anzdata.org.au>

ANZDATA Registry - Melbourne 2000 Transplantation - Dr Graeme Russ



ANZDATA Registry Web Address
<http://www.anzdata.org.au>

ANZDATA Registry - Melbourne 2000 Transplantation - Dr Graeme Russ



Survival of Primary Cadaver Grafts According to Rejection in the First Month

Australia and NZ
1-Apr-97 to 31-Aug-99

	n	Graft Survival	
		1 yr	2 yr
No Rejection	n=641	89%	86%
One Rejection	n=161	84%	81%
>1 Rejection	n=46	87%	87%
Antibody Therapy	n=53	75%	72%

p = n.s.

Serum Creatinine at 12 Months in Primary Cadaver Graft Recipients According to the Occurrence of Rejection in the First Month

Australia and NZ
1-Apr-97 to 31-Aug-99

	Se Creat $\mu\text{mol/L}$ Mean \pm SD
No Rejection	143 \pm 70
Single Rejection	162 \pm 66
Multiple Rejection	166 \pm 76
Antibody Therapy	158 \pm 59

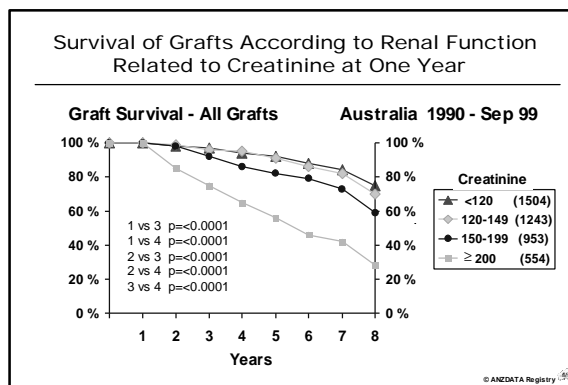
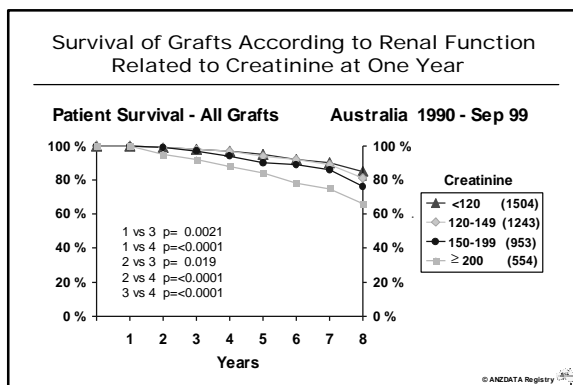
p = n.s.

Survival of Primary Cadaver Grafts According to Vascular Rejection Occurring in the First Month

Australia and NZ
1-Apr-97 to 31-Aug-99

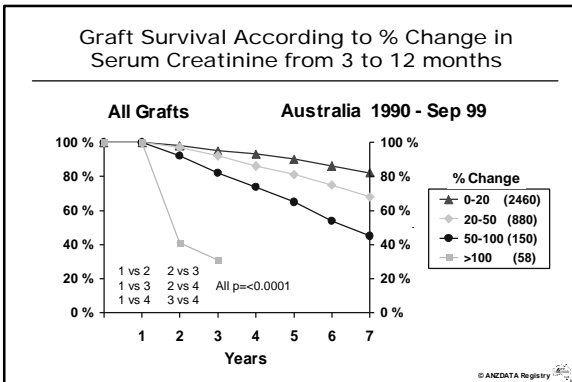
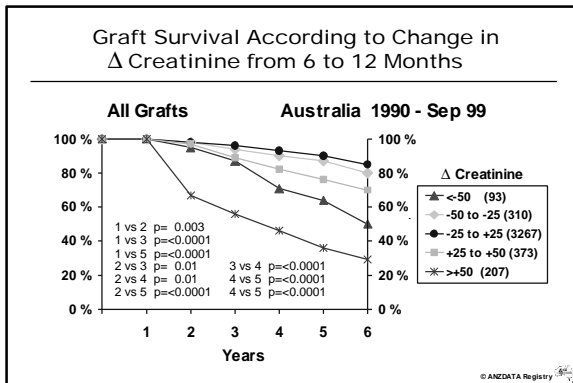
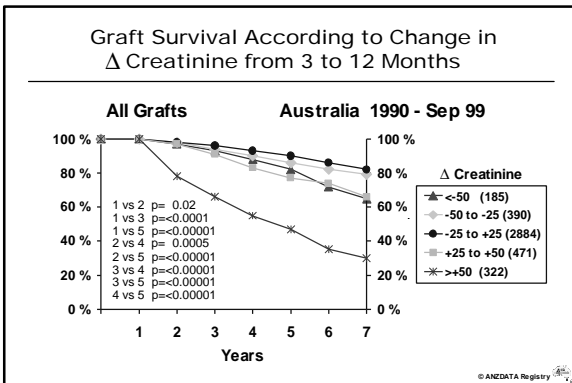
	n	Graft Survival	
		1 yr	2 yr
Vascular Rejection	n=68	76%	69%
Non Vasc Rejection	n=117	89%	89%

p = 0.006



ANZDATA Registry Web Address
<http://www.anzdata.org.au>

ANZDATA Registry - Melbourne 2000 Transplantation - Dr Graeme Russ



ANZDATA Registry Web Address
<http://www.anzdata.org.au>