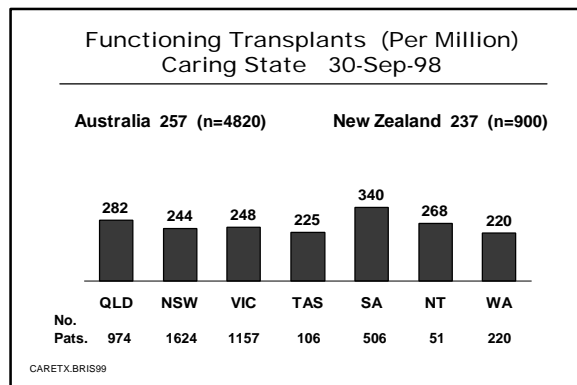
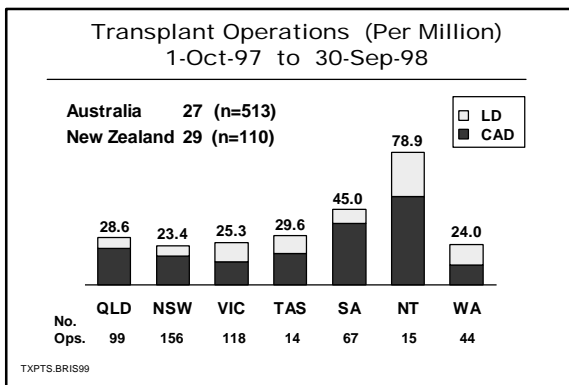
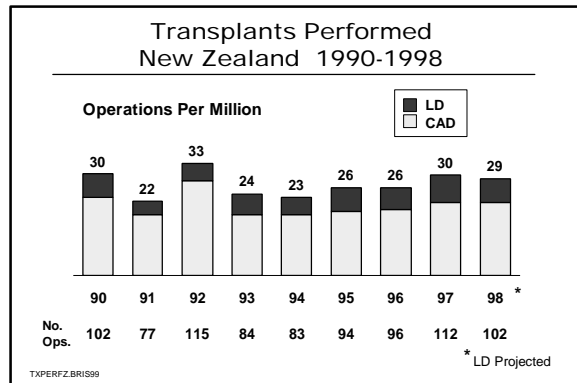
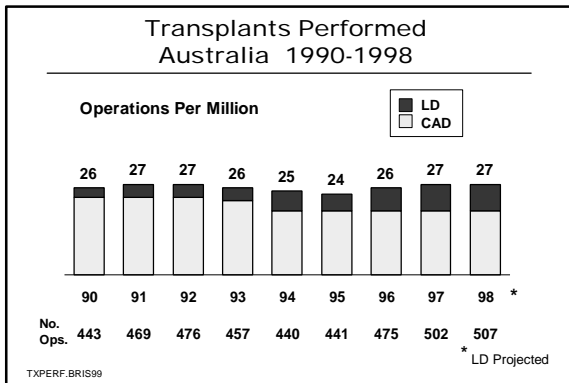


ANZDATA Registry - Brisbane March 1999 Transplantation Report by Dr G.R. Russ



Rate of Transplant Operations (Per Million) By Year (1-Oct to 30 Sep)

		1994	1995	1996	1997	1998
Aust	CAD	19	17	21	18	19
	LD	5	5	6	7	9
NZ	CAD	16	17	18	23	21
	LD	6	6	7	8	8

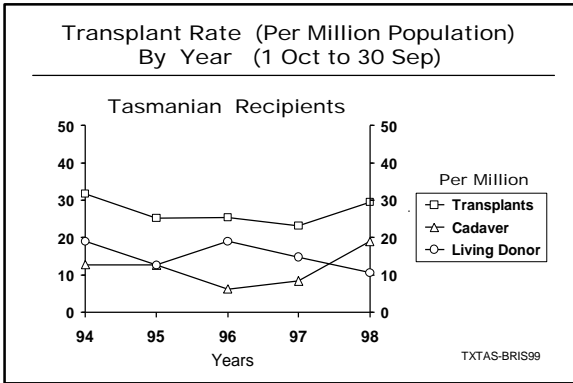
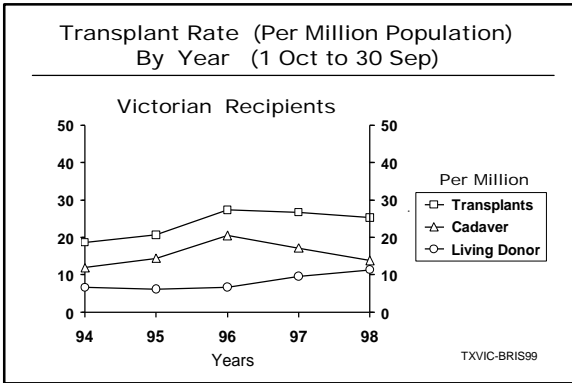
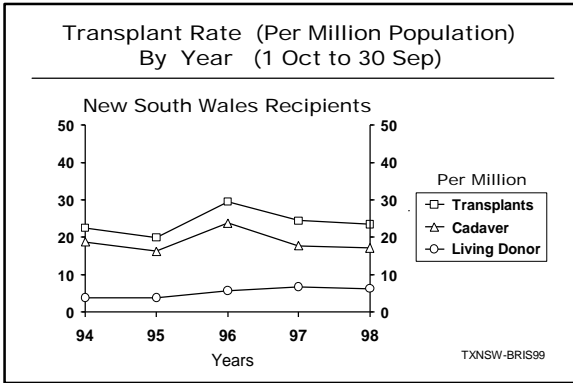
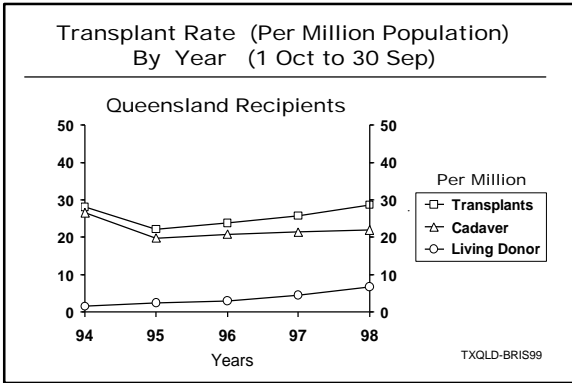
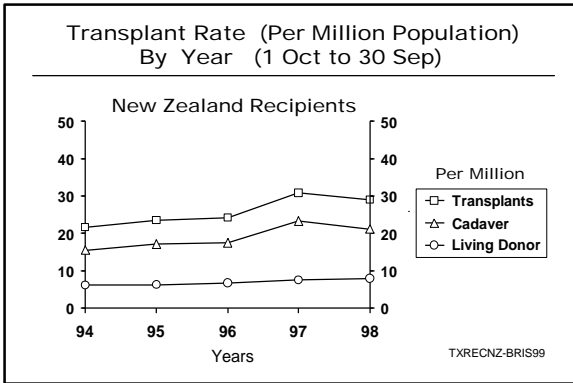
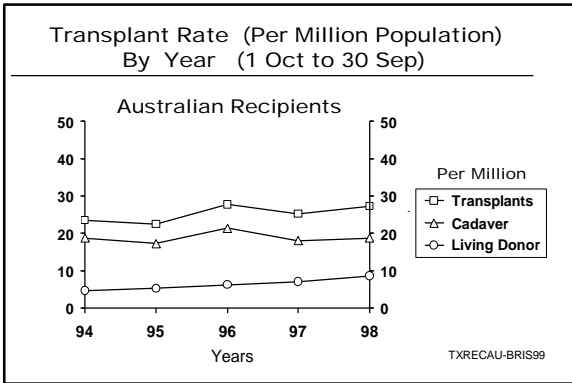
Rate of Transplant Operations (Per Million) By Year (1-Oct to 30 Sep)

		1994	1995	1996	1997	1998
QLD	CAD	27	20	21	21	22
	LD	2	2	3	4	7
NSW	CAD	19	16	24	18	17
	LD	4	4	6	7	6
VIC	CAD	12	14	21	17	14
	LD	7	6	7	10	11
TAS	CAD	13	13	6	8	19
	LD	19	13	19	15	11
SA	CAD	32	28	29	22	37
	LD	5	9	11	9	8
NT	CAD	12	12	6	48	53
	LD	6	12	6	11	26
WA	CAD	14	17	15	12	12
	LD	5	7	6	4	12

ANZDATA Registry Web Address
<http://www.anzdata.org.au>

ANZDATA Registry - Brisbane March 1999

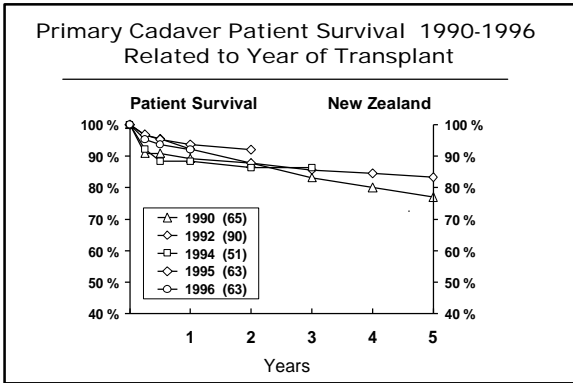
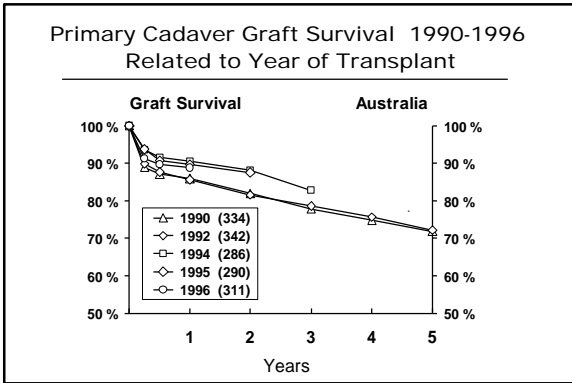
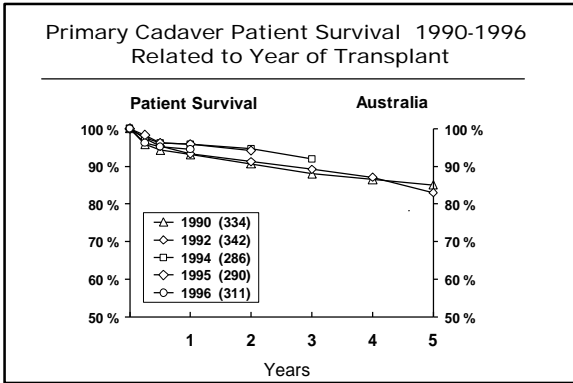
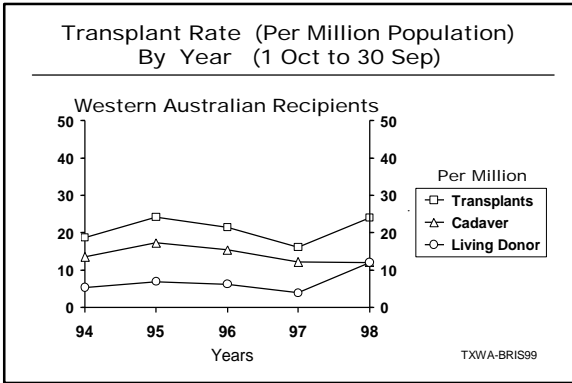
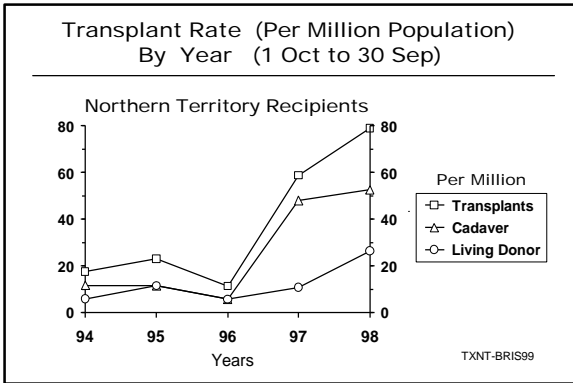
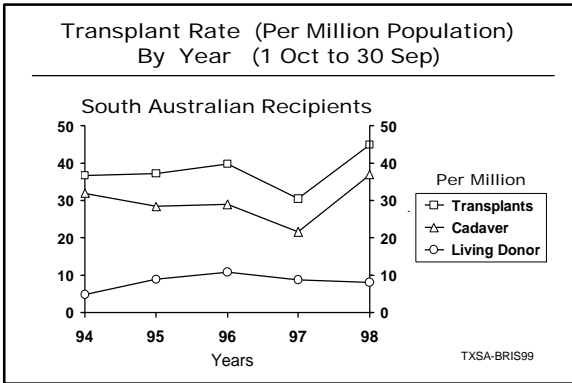
Transplantation Report by Dr G.R. Russ



ANZDATA Registry Web Address
<http://www.anzdata.org.au>

ANZDATA Registry - Brisbane March 1999

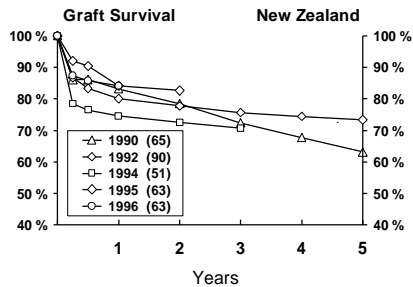
Transplantation Report by Dr G.R. Russ



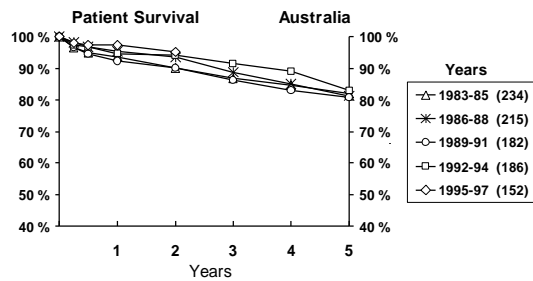
ANZDATA Registry Web Address
<http://www.anzdata.org.au>

ANZDATA Registry - Brisbane March 1999 Transplantation Report by Dr G.R. Russ

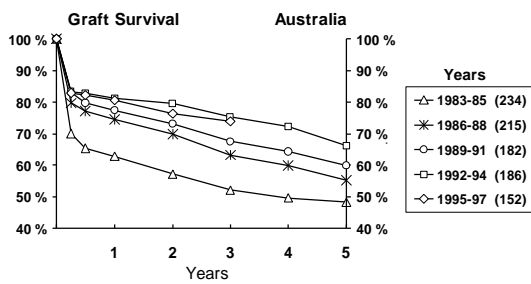
Primary Cadaver Graft Survival 1990-1996 Related to Year of Transplant



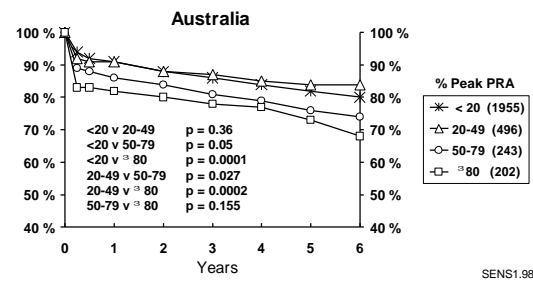
Second and Subsequent Cadaver Patient Survival Related to Years of Transplant 1983-1997



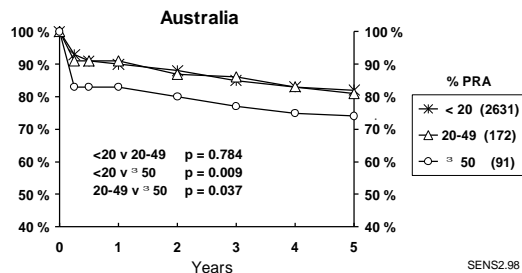
Second and Subsequent Cadaver Graft Survival Related to Years of Transplant 1983-1997



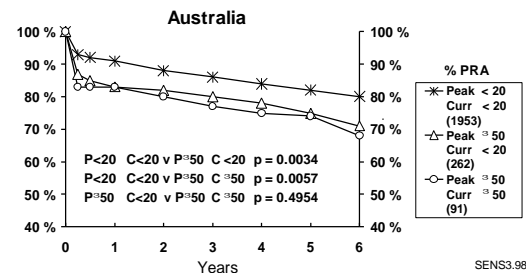
Primary Cadaver Graft Survival 1989-1997 According to Peak Sensitization (Death Censored)



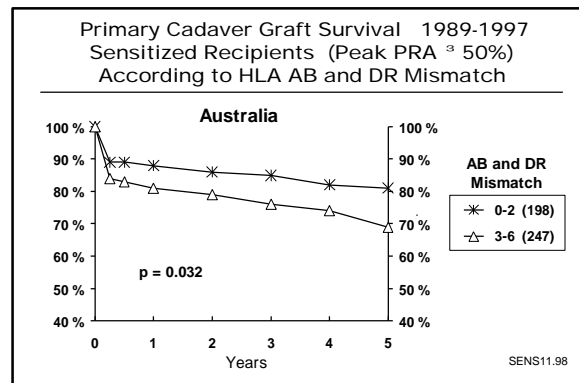
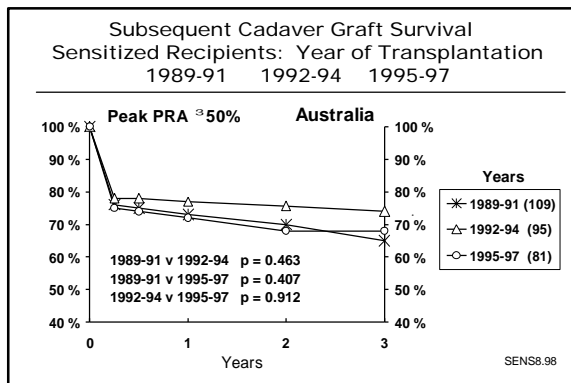
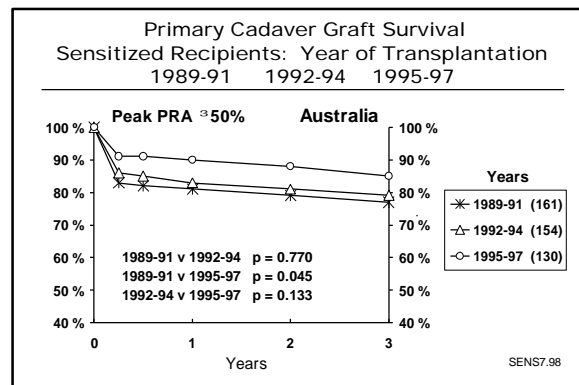
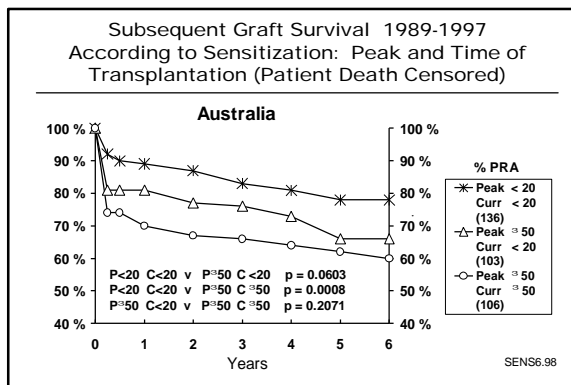
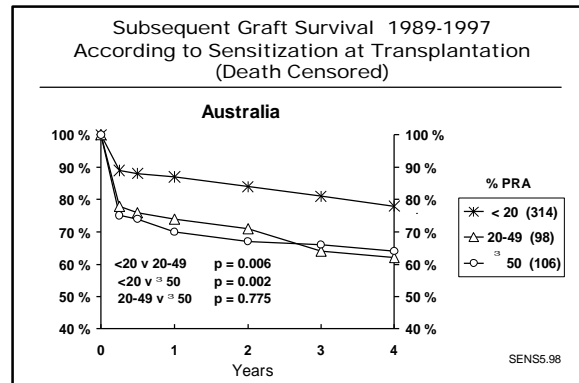
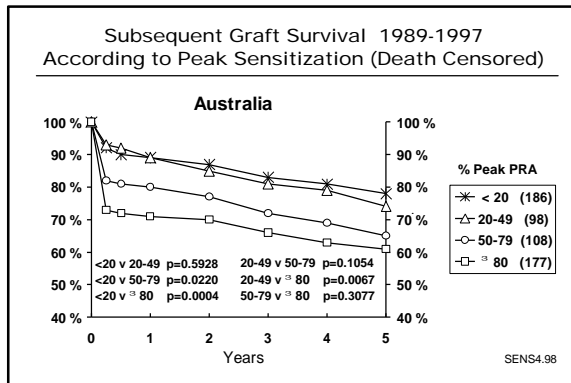
Primary Cadaver Graft Survival 1989-1997 According to Sensitization at Transplantation (Death Censored)



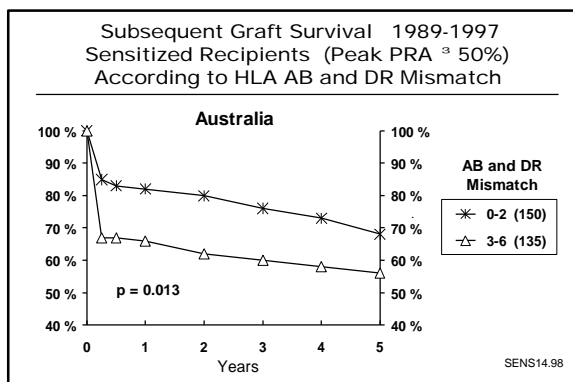
Primary Cadaver Graft Survival 1989-1997 According to Sensitization: Peak and Time of Transplantation (Patient Death Censored)



ANZDATA Registry - Brisbane March 1999 Transplantation Report by Dr G.R. Russ



ANZDATA Registry - Brisbane March 1999 Transplantation Report by Dr G.R. Russ



Cadaver Grafts - Australia
1-Apr-97 to 30-Sep-98

Rejection Episodes in First 30 Days

	Yes (Bx Proven)	No
CD1 n=473	30% (27%)	70%
CD2+ n=85	42% (39%)	58%

REJ1.BRIS99

Cadaver Grafts - Australia
1-Apr-97 to 30-Sep-98

Rejection Episodes in First 30 Days

	CD1	CD2+
Single	80%	81%
Multiple	20%	19%

REJ2.BRIS99

Cadaver Grafts - Australia
1-Apr-97 to 30-Sep-98

Vascular Rejection in Biopsy Proven
Rejection in First 30 Days

Vascular Rejection	CD1	CD2+
Nil	69%	42%
Mild / Moderate	29%	42%
Severe	2%	15%

REJ3.BRIS99

Cadaver Grafts - Australia
1-Apr-97 to 30-Sep-98

Glomerular Rejection in Biopsy Proven
Rejection in First 30 Days

Glomerular Rejection	CD1	CD2+
Nil	84%	58%
Mild / Moderate	13%	39%
Severe	2%	3%

REJ4.BRIS99

Primary Cadaver Grafts - Australia
1-Apr-97 to 30-Sep-98

Rejection Episodes in First 30 Days
According to Peak Sensitization

	Yes	No
PRA < 50% n=404	30%	70%
PRA \geq 50% n=68	34%	66%

REJ5.BRIS99

ANZDATA Registry Web Address
<http://www.anzdata.org.au>

ANZDATA Registry - Brisbane March 1999

Transplantation Report by Dr G.R. Russ

Subsequent Cadaver Grafts - Australia 1-Apr-97 to 30-Sep-98		
Rejection Episodes in First 30 Days According to Peak Sensitization		
	Yes	No
PRA < 50% n=35	31%	69%
PRA ≥ 50% n=46	52%	48%

REJ6.BRIS99

Primary Cadaver Grafts - Australia 1-Apr-97 to 30-Sep-98		
Vascular Rejection in Episodes in First 30 Days According to Peak Sensitization		
	PRA < 50%	PRA ≥ 50%
Vascular Rejection		
Nil	70%	58%
Mild / Moderate	28%	37%
Severe	2%	5%

REJ7.BRIS99

Subsequent Cadaver Grafts - Australia 1-Apr-97 to 30-Sep-98		
Vascular Rejection in Episodes in First 30 Days According to Peak Sensitization		
	PRA < 50%	PRA ≥ 50%
Vascular Rejection		
Nil	30%	48%
Mild / Moderate	70%	30%
Severe	0%	22%

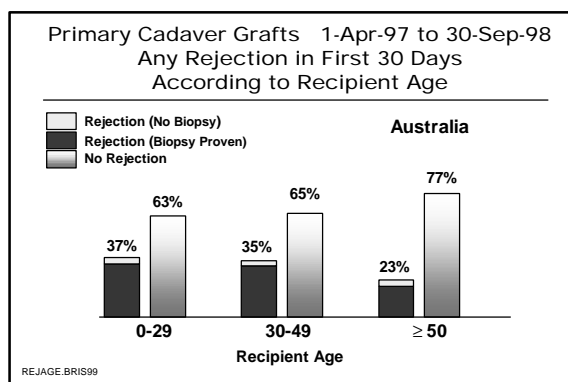
REJ8.BRIS99

Primary Cadaver Grafts - Australia 1-Apr-97 to 30-Sep-98		
Glomerular Rejection in Episodes in First 30 Days According to Peak Sensitization		
	PRA < 50%	PRA ≥ 50%
Glomerular Rejection		
Nil	88%	63%
Mild / Moderate	11%	26%
Severe	1%	11%

REJ9.BRIS99

Subsequent Cadaver Grafts - Australia 1-Apr-97 to 30-Sep-98		
Glomerular Rejection in Episodes in First 30 Days According to Peak Sensitization		
	PRA < 50%	PRA ≥ 50%
Glomerular Rejection		
Nil	60%	57%
Mild / Moderate	40%	39%
Severe	0%	4%

REJ10.BRIS99



ANZDATA Registry Web Address
<http://www.anzdata.org.au>

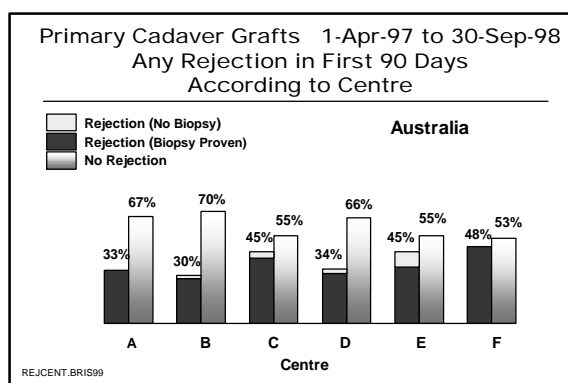
ANZDATA Registry - Brisbane March 1999 Transplantation Report by Dr G.R. Russ

**Primary Cadaver Grafts - Australia
1-Apr-97 to 30-Sep-98**

Number of Rejection Episodes in First 90 Days
According to Age of Recipient

Years	Nil	Single	Multiple
0-29 n=83	54%	32%	14%
30-49 n=218	57%	31%	12%
≥ 50 n=187	72%	24%	4%

REJ11.BRIS99



**Primary Cadaver Grafts - Australia
1-Jan-93 to 30-Sep-98**

Initial Immunosuppressive Treatment

Year	CyA+ Aza+ Pred	CyA+ MMF+ Pred	CyA+ Aza	CyA+ MMF	Tacrol. Comb.	Other	Total
1993	74%	16%	5%	0	0	6%	322
1994	83%	0	13%	0	1%	2%	285
1995	78%	0	4%	0	7%	9%	289
1996	78%	1%	7%	1%	0	12%	310
1997	40%	36%	1%	4%	<1%	19%	312
1998 *	11%	48%	0	5%	1%	35%	202

* Data to 30-Sep-98

REJ14.BRIS99

**Primary Cadaver Grafts - Australia
1-Apr-97 to 31-Mar-98**

Rejection Occurring in the First 30 Days
According to Initial Immunosuppression

Immunosuppression	No of Pts	Rejection First Month	
		Biopsy Performed No	Biopsy Performed Yes
Aza-CyA-Pred	87	3%	25%
MMF-CyA-Pred	137	5%	26%
Total	224	4%	26%

REJ12.BRIS99

**Primary Cadaver Grafts - Australia
1-Apr-97 to 31-Mar-98**

Antibody Treatment for Rejection in First 30 Days
According to Initial Immunosuppression

Immunosuppression	No of Pts	Rejection First Month Antibody Treatment	
		No	Yes
Aza-CyA-Pred	87	14%	14%
MMF-CyA-Pred	137	23%	8%
Total	224	19%	10%

REJ13.BRIS99

**Primary Cadaver Grafts
Australia 1993-1997**

Serum Creatinine at Three and Six Months
(Mean and 95% Confidence Interval)
According to Initial Immunosuppression

Initial Immunosuppression	Three Months	Six Months
	CyA + MMF + Pred (n=155)	138 (129-147)
CyA + Aza + Pred (n=986)	145 (140-149)	144 (140-148)

p value at six months = 0.031 (t-test)

REJ15.BRIS99

ANZDATA Registry - Brisbane March 1999

Transplantation Report by Dr G.R. Russ

Primary Cadaver Grafts - Australia 1-Apr-97 to 30-Sep-98		
Rejection Episodes in First 90 Days According to Initial Immunosuppression		
	Rejection	No Rejection
CyA + Aza + Pred (n=111)	34%	66%
CyA + MMF + Pred (n=218)	36%	64%

REJ17.BRIS99

Primary Cadaver Grafts - Australia 1-Apr-97 to 30-Sep-98			
Rejection in Episodes in First 90 Days According to Initial Immunosuppression			
	None	Single	Multiple
CyA + Aza + Pred	66%	25%	9%
CyA + MMF + Pred	64%	29%	7%

REJ19.BRIS99

Primary Cadaver Grafts - Australia 1-Apr-97 to 30-Sep-98			
Vascular Rejection in Episodes in First 90 Days According to Initial Immunosuppression			
	Nil	Mild/Mod	Severe
CyA + Aza + Pred	65%	32%	3%
CyA + MMF + Pred	74%	20%	6%

REJ18.BRIS99

Primary Cadaver Grafts - Australia 1-Apr-97 to 30-Sep-98		
Serum Creatinine at Six Months According to Rejection in First 30 Days		
Mean Serum Creatinine ± SD at Six Months		
No Rejection	n=203	146 ± 57
Single Rejection	n=58	153 ± 51
Vascular	n=16	164 ± 54
Non Vascular	n=42	149 ± 50
Multiple Rejection	n=20	190 ± 79
Vascular	n=9	193 ± 91
Non Vascular	n=13	187 ± 91

REJ16.BRIS99